

**TOWN OF GLASTONBURY
BID NO. GL-2014-14**

**TRYON STREET DRAINAGE PHASE 1
DATE AND TIME REQUIRED: JANUARY 14, 2014 AT 11:00 AM**

**ADDENDUM NO. 1
JANUARY 7, 2014**

The attention of bidders submitting proposals for the above-referenced project is called to the following Addendum to the specifications. The items set forth herein, whether of omission, addition, substitution or other change, are all to be included in and form a part of the proposed Contract Documents for the work. Bidders shall acknowledge this Addendum in the Bid Proposal by inserting its number on Page BP-1.

Make the following modifications to the Contract Documents:

ITEM 1: SECTION 210: TEMPORARY CONSTRUCTION ENTRANCE of the Detailed Construction Specifications is hereby replaced with the revised specification (page DCS-16) attached to this addendum.

QUESTIONS AND ANSWERS

Q1-1:	Do all manholes have to be a minimum of 7' diameter or is the diameter determined by the size and configuration of pipes?
A1-1:	Manhole G-2 shall be a 6-foot diameter manhole.
Q2-1:	The manhole detail on Plan Sheet 5 references "Plate 33" for the manhole frame and cover requirements. Where can this detail be found?
A2-1:	Plate 33 is attached to this addendum.
Q3-1:	The 36-inch pipe will not fit in outlet structure G-1 as designed based on the flow line and top of frame elevations listed on the plans. Please clarify.
A3-1:	The top of frame elevation of this structure can be fit in the field to accommodate the 36-inch pipe.
Q4-1:	Does the Town of Glastonbury have a standard bid bond form or is the AIA form acceptable?
A4-1:	No, the Town of Glastonbury does not have a standard bid bond form. The AIA form is acceptable.
Q5-1:	Does the bid item for Bid Item 19 Modified Riprap include the geotextile fabric?
A5-1:	No, Bid Item 19 Modified Riprap does <u>not</u> include payment for geotextile fabric. Geotextile fabric will be installed as directed by the Engineer should field conditions warrant, and will be measured and paid for as a separate item.
Q6-1:	Please clarify whether the 36" pipe is to be bedded in sand or ¾" stone.
A6-1:	The pipe is to be bedded in ¾" stone when the ground water table is intercepted by the excavation, as shown in the detail on Sheet 5. Bidders should assume that the majority of the

	pipe bedding will be below the ground water table.
Q7-1:	Please clarify whether the trench for the 36" pipe is to be backfilled with bank run gravel or on site excavated material.
A7-1:	Bidders should assume that existing excavated material will not be suitable for trench backfill material. This unsuitable material can be disposed of at the nearby Town Bulky Waste Facility located on Tryon Street as described in Section 7.00 of the Special Conditions. The Town will also provide suitable gravel backfill from this same facility at no charge. The Contractor shall provide the Town a minimum of 48 hours notice so that that the Town can ensure than an equipment operator is available to load the Contractor's vehicles.

END OF ADDENDUM NO. 1 TEXT

PLEASE NOTE: TWO PAGES OF REVISED SPECIFICATIONS FOLLOW THIS TEXT

210.0 TEMPORARY CONSTRUCTION ENTRANCE

210.1 General: Work of this item shall generally consist of the installation and maintenance of a stone construction entrance to prevent soil from being tracked on to paved roadways. Work shall include excavation, base preparation, and all materials as necessary.

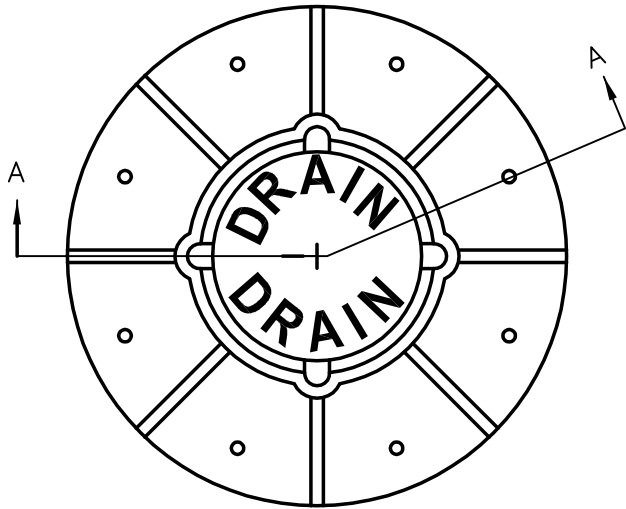
210.2 Materials: Stone shall consist of No. 3. stone as per section Section M01.01 of the Form 816.

Geotextile shall conform to the requirements of the Form 816, M.08.01-26 and shall be listed in the ConnDOT Qualified Products list for Geotextile (Separation, High Survivability).

Materials incidental to and necessary for the installation of the geotextile, such as, but not limited to sewing thread, staples, pins, etc., shall conform to the requirements of the manufacturer of the geotextile.

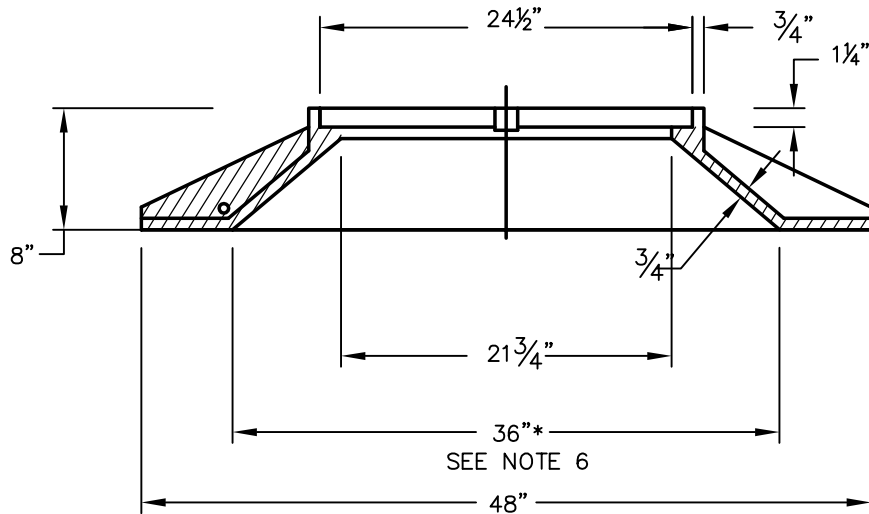
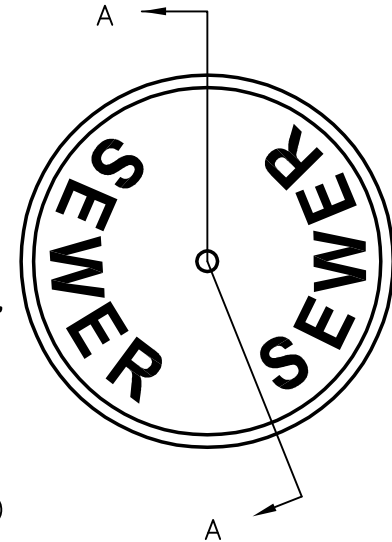
210.3 Construction Methods: Topsoil and other organic material shall be stripped to the limits of the temporary construction entrance, minimum dimensions shall be 50 feet long by 20 feet wide. Geotextile meeting the above requirements shall be installed per manufacturer requirements. A 6-inch thick layer of ConnDOT No. 3 stone shall be installed on top of the geotextile. Additional stone shall be added as necessary to maintain the function of the temporary construction entrance.

210.4 Measurement and Payment: The work under this item shall be paid at the contract lump sum price for the stone construction entrance completed, and in place. The unit price shall include all materials, stone, geotextile, equipment, labor, excavation, disposal of excavated material, and tools incidental to the construction and maintenance of this item.

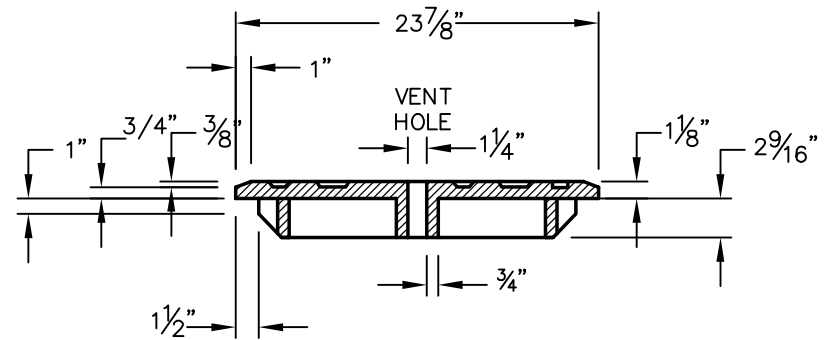


NOTES:

1. FRAME & COVER TO BE HEAVY DUTY TOTAL WEIGHT APPROX. 640LBS.
2. ALL SURFACES TO BE MACHINE FINISHED.
3. LeBARON FOUNDRY LJ 105 5 OR CAMPBELL FOUNDRY 1221 5012 OR EQUAL.
5. STORM COVER MUST HAVE "STORM" OR "DRAIN" EMBOSSED ON IT.
6. MANHOLE FRAMES WITH 24" I.D. FLANGES MAY BE USED ON STRUCTURES THAT ARE NOT MANHOLES (EG: SED. STRUCTURE, FIRE TANK, CB CONVERSIONS, ETC.)



FRAME SECTION A-A

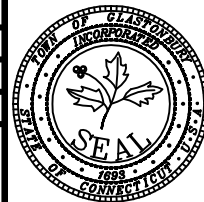


COVER SECTION A-A

H: \DWG\Details\TOG\Standard Detail Plates\Plate33-ManholeFrameAndCover.dwg



SCALE : NONE
DRAWN BY: SR
CHECKED BY: SMB
APPROVED BY: DAP
LAST REVISED: 9/2/2008



TOWN OF GLASTONBURY
DEPARTMENT OF PHYSICAL SERVICES
ENGINEERING DIVISION

MANHOLE FRAME
AND COVER