

CL&P #2838

18" RCP

Welles Street

CL&P CATV #2837 Box

N

Sym PAB Qty 24 Botanical Platnus Acerifolia "Bloodgood"

Common Name London Planetree

Size 2.5-3" caliper (see bid proposal)

1 ENLARGEMENT 13.2 PLAN

Existing Lawn

(37) PAB

EDGE PLANTINGS (TYP)  
 (8) HV = 22'12"5  
 (1) NS2 = 430.00'  
 (3) VC = 84.43'  
 (3) NS2 = 166.73'

EDGE PLANTINGS

(3) VC

(7) VC

(3) NS2

(7) IV

(3) HV

(6) RV

(1) CF2

(5) HV

(4) RV

(2) CF2

(3) IV

EDGE PLANTINGS (TYP)

(4) RV

(1) CF2

(5) RV

(2) CF2

(6) VC

(1) NS

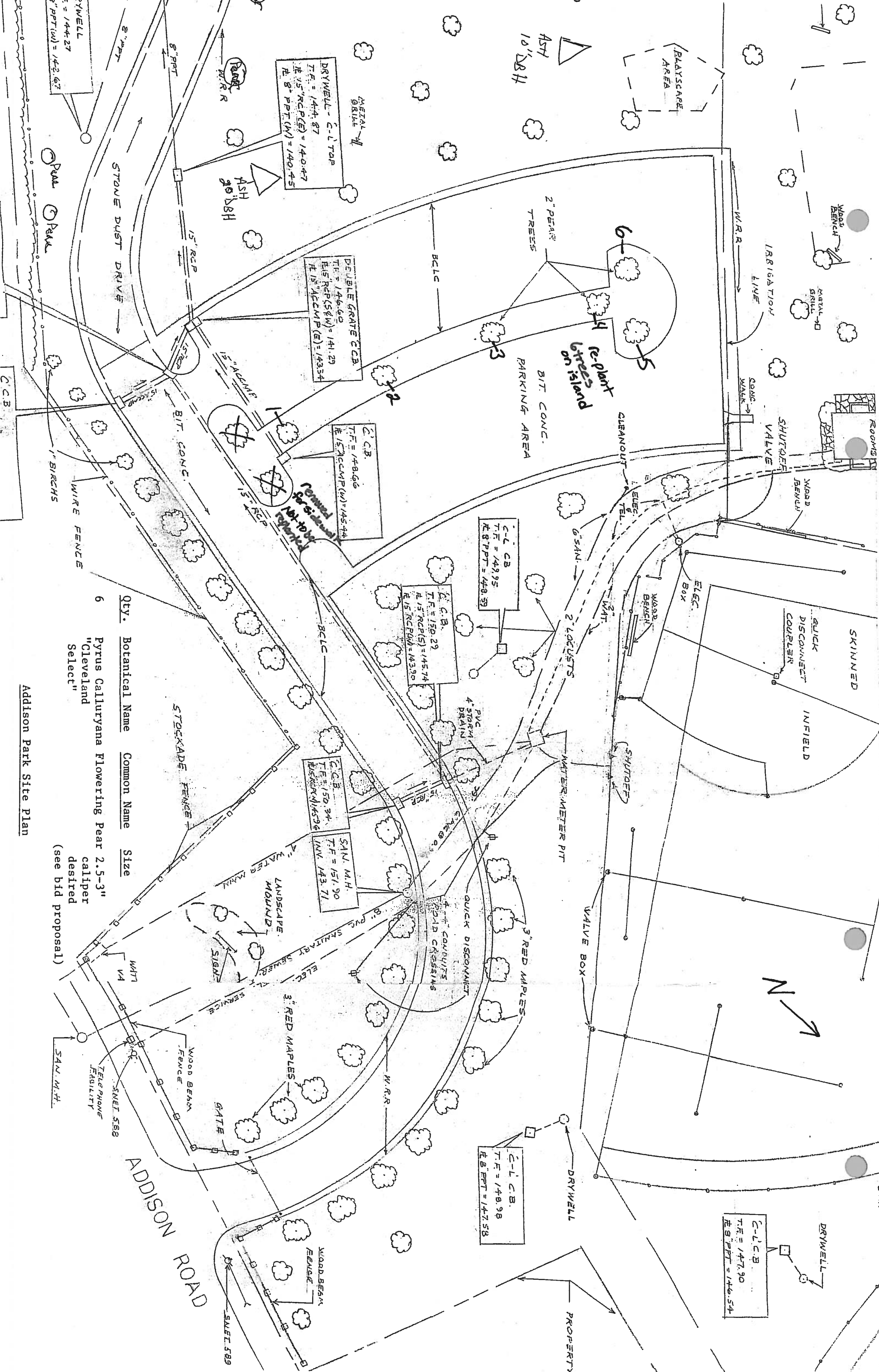
Δ = 380.0  
 R = 71.22  
 T = 140.80



Appendix B  
Part B

Overlay tree #14, 15, 16  
from Part A to match Part A & Part B

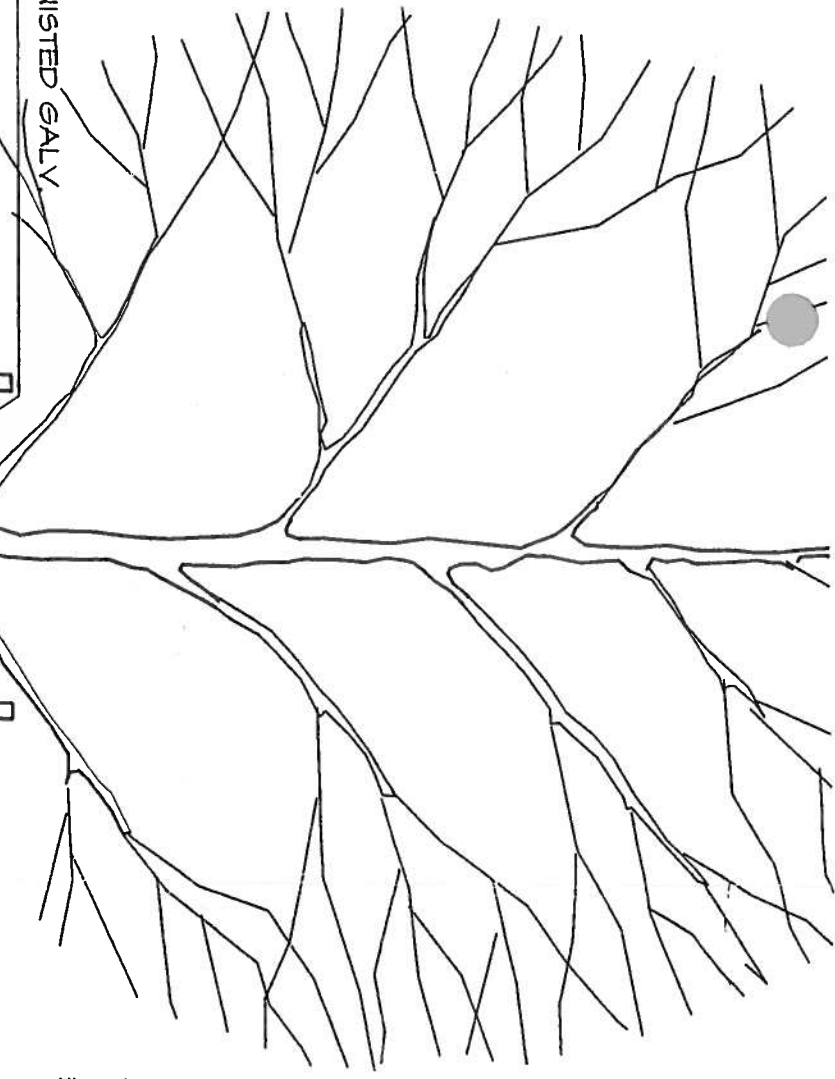




Qty.	Botanical Name	Common Name	Size
6	<i>Pyrus Calluryana</i>	Flowering Pear	2.5-3" caliper desired
	"Cleveland Select"		(see bid proposal)

Addison Park Site Plan



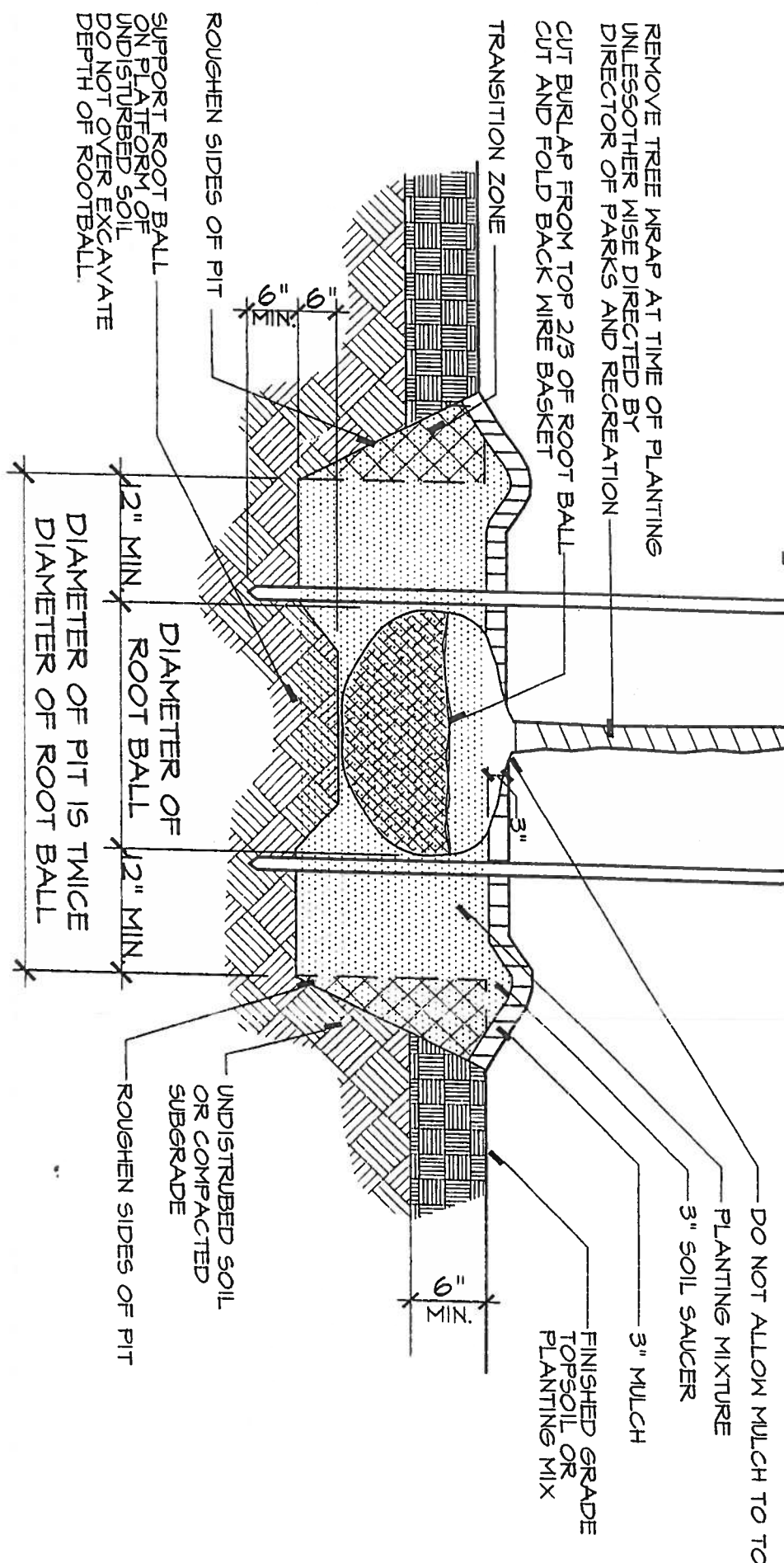


2 STRANDS 12 GA. TWISTED GALV WIRE AT EACH POST  
 2" x 2" x 8' (MIN) SUPPORT POSTS (DRIVE AT ANGLE AND DRAW VERTICAL);  
 NUMBER OF SUPPORT POSTS  
 MINIMUM OF THREE POSTS AT 120° FOR DECIDUOUS TREES UP TO 4 1/2" CAL. AND EVERGREEN TREES 8"-16" IN HEIGHT WITHIN 10' OF A PEDESTRIAN WAY.

REMOVE TREE WRAP AT TIME OF PLANTING UNLESS OTHERWISE DIRECTED BY DIRECTOR OF PARKS AND RECREATION

CUT BURLAP FROM TOP 2/3 OF ROOT BALL CUT AND FOLD BACK WIRE BASKET

TRANSITION ZONE



- NOTES:
1. SET TREE PLUMB PRIOR TO STAKING.
  2. SET CROWN OF ROOT BALL 3" ABOVE FINISHED GRADE SO ROOT FLARE IS EXPOSED.
  3. DO NOT STAKE TREES UNLESS DIRECTED AND AUTHORIZED BY THE DIRECTOR OF PARKS AND RECREATION.
  4. THIS DETAIL ILLUSTRATES THE MINIMUM STAKING OR GUYING SYSTEM, IF REQUIRED BY THE DIRECTOR OF PARKS AND RECREATION PROVIDE ADDITIONAL STAKES OR GUY'S IF REQUIRED DUE TO FIELD CONDITIONS OR SIZE OF TREE.

DO NOT ALLOW MULCH TO TOUCH BARK

PLANTING MIXTURE  
 3" SOIL SAUCER

3" MULCH

FINISHED GRADE TOPSOIL OR PLANTING MIX

UNDISTURBED SOIL OR COMPACTED SUBGRADE

ROUGHEN SIDES OF PIT

ROUGHEN SIDES OF PIT

SUPPORT ROOT BALL ON PLATFORM OF UNDISTURBED SOIL DO NOT OVER EXCAVATE DEPTH OF ROOTBALL

Glastonbury Riverfront Park & Addison Park Tree Planting

Tree Planting Detail  
 (not to scale)