

GLASTONBURY EAST HARTFORD ELEMENTARY MAGNET SCHOOL

95 OAK STREET

GLASTONBURY, CONNECTICUT

PHASE 3 OF 4

SET 1 OF 1

STATE PROJECT NO. 054-0095 MAC/N/PS

MOVABLE EQUIPMENT PRINTING - SEPTEMBER 26, 2011

FLETCHER THOMPSON

ARCHITECTURE / ENGINEERING / INTERIOR DESIGN

THREE CORPORATE DRIVE / SHELTON, CT 06484-6244 / 203 225 6500 / FAX 225 6800
146 WYLLYS STREET / HARTFORD, CT 06106-1986 / 860 249 0888 / FAX 246 7206

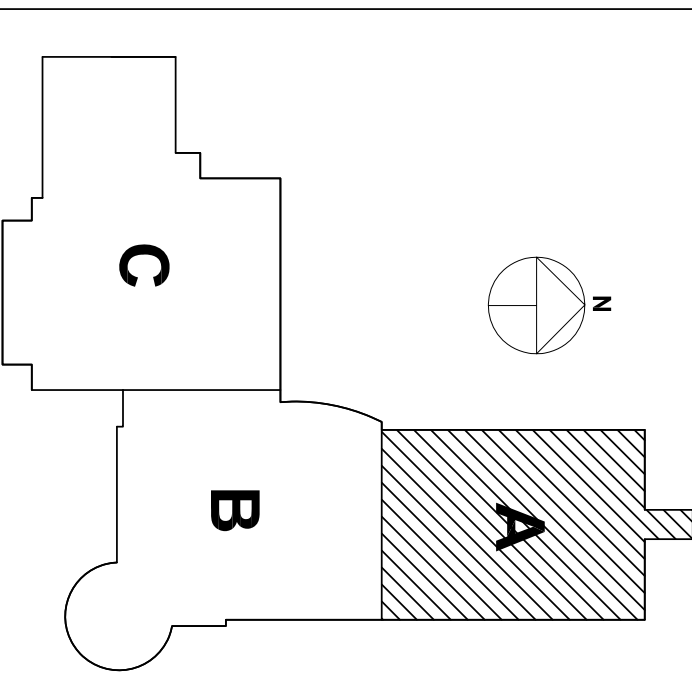
D'AGOSTINO & ASSOCIATES

Technology Design & Support Services

SHELTON, CT 06484 | 203-402-0450 | WWW.DA-TECHNOLOGY.COM

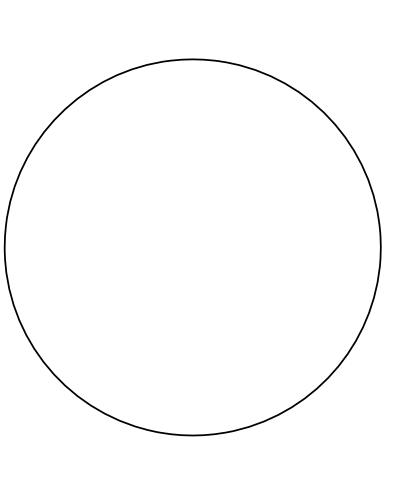
GLASTONBURY EAST HARTFORD
ELEMENTARY MAGNET SCHOOL
PHASE 3 OF 4
SET 1 OF 1
MOVABLE EQUIPMENT AND TECHNOLOGY PRINTING
SEPTEMBER 26, 2011
FT PROJECT NO. H090230.000

THIS DOCUMENT IS THE PROPERTY OF FLETCHER THOMPSON ARCHITECTURE, ENGINEERING & INTERIOR DESIGN. IT IS TO BE USED ONLY FOR THE PROJECT AND SITE SPECIFICALLY IDENTIFIED HEREON. IT IS NOT TO BE REPRODUCED, COPIED, DULY OR OTHERWISE TRANSMITTED IN ANY FORM OR BY ANY MEANS, ELECTRONIC OR MECHANICAL, INCLUDING PHOTOCOPYING, RECORDING, OR BY ANY INFORMATION STORAGE AND RETRIEVAL SYSTEM, WITHOUT THE WRITTEN PERMISSION OF FLETCHER THOMPSON ARCHITECTURE, ENGINEERING & INTERIOR DESIGN.



REVISION	DATE

CODE COMPLIANCE NOTE:
 IN ORDER TO MEET THE NEEDS OF PERSONS WITH DISABILITIES, WHEN APPLICABLE ALL ITEMS SHALL BE COMPLIANT WITH THE CURRENT CONNECTICUT BUILDING CODE INCLUDING 2003 ICCSANS A17.1 SECTION 904 REHABILITATION ACT 1973 INCLUDING LIFE SAFETY AND 904 REGULATIONS AND THE AMERICANS WITH DISABILITIES ACT TITLE II INCLUDING THE CONNECTICUT REGULATIONS AND REGULATIONS.
 ACCESSIBLE USE ELEMENTS SHALL BE A MINIMUM OF 36" WIDE, 27" HIGH (27" CLEAR), AND 19" DEPTH.
 COMPLIANCE WITH THE CURRENT CONNECTICUT ZONING ORDINANCE IS ALSO REQUIRED WHEN APPLICABLE.
 THE FINISH SHALL INCLUDE, BUT ARE NOT LIMITED TO, FIXTURES, FURNISHINGS, EQUIPMENT, WORKSTATIONS.



PROJECT ARCHITECT	J. COBITA
PROJECT MANAGER	A. DONNELL
DRAWN BY	K. STRYAN
CHECKED BY	EGC
DATE	ALL

**GLASTONBURY EAST
 HARTFORD
 ELEMENTARY
 MAGNET SCHOOL
 95 OAK STREET,
 GLASTONBURY, CT**

STATE PROJECT NO. 094-0095 MAGNIMS
 STATE PROJECT NO. 094-0095 MAGNIMS

0 8" 24'
 DRAWING TITLE

**LOWER LEVEL
 FURNITURE PLAN -
 PART A**

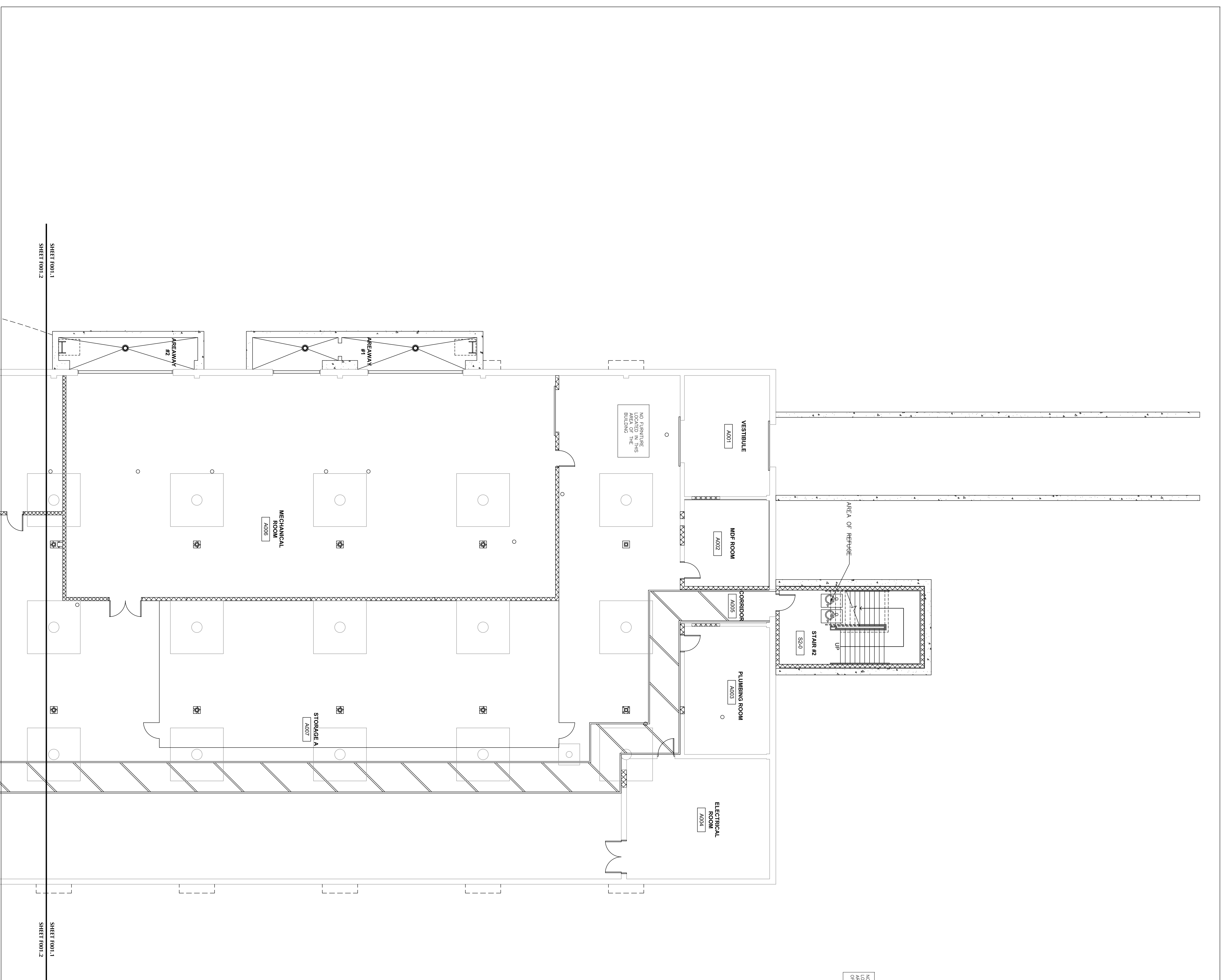
PHASE 3 OF 4

DATE: SEPTEMBER 26, 2011

SCALE: 1/8" = 1'-0"

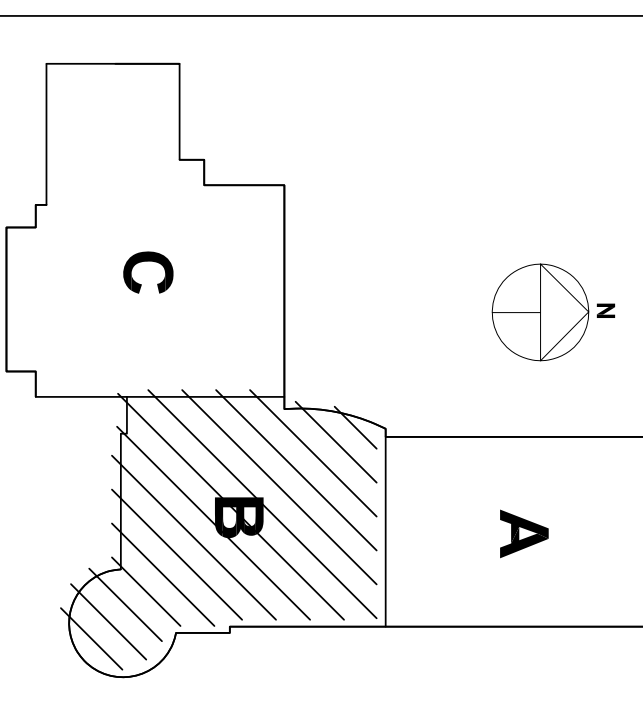
PROJECT NUMBER: H-090230

DRAWING NO: **F100.1**



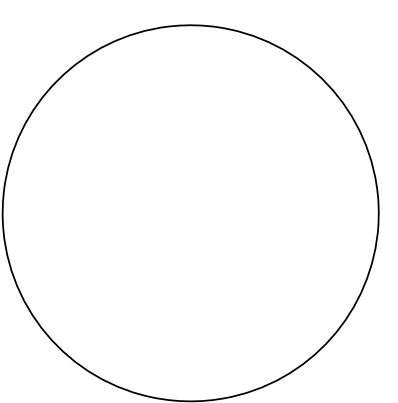
SHEET F100.1
 SHEET F100.2

SHEET F100.1
 SHEET F100.2



CODE COMPLIANCE NOTE:

IN ORDER TO MEET THE NEEDS OF PERSONS WITH DISABILITIES, THE CURRENT CONNECTICUT BUILDING CODE (CONNECTIONS) AND THE AMERICAN WITH DISABILITIES ACT (ADA) INCLUDING THE ADA REGULATIONS AND ADA REGULATIONS, ACCESSIBLE CLEARANCES SHALL BE A MINIMUM OF 30" WIDE, 27" HIGH (24" CHILD), AND 9" DEEP. COMPLIANCE WITH THE CURRENT CONNECTICUT FIRE SAFETY CODE AND CURRENT OSHA TITLE 29 LABOR IS ALSO REQUIRED WHEN APPLICABLE. THE ITEMS SHALL INCLUDE, BUT ARE NOT LIMITED TO: FUTURES, FURNISHINGS, EQUIPMENT, WORKSTATIONS.

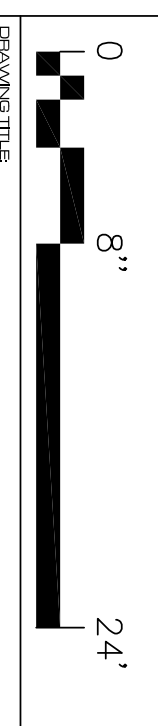


PROJECT MEMBERS

PROJECT CHAIRMAN	J. COSTA
PROJECT MANAGER	A. CABALL
DESIGNER	K. RYAN
PROJECT MANAGER / DESIGNER	R. GONZ
DESIGNER	
PROJECT	ALL

**GLASTONBURY EAST
 HARTFORD
 ELEMENTARY
 MAGNET SCHOOL
 95 OAK STREET,
 GLASTONBURY, CT**

STATE PROJECT NO. 64-4864 MANSING
 STATE PROJECT NO. 04-0096 MANSING



**LOWER LEVEL
 FURNITURE PLAN -
 PART B**

PHASE 3 OF 4

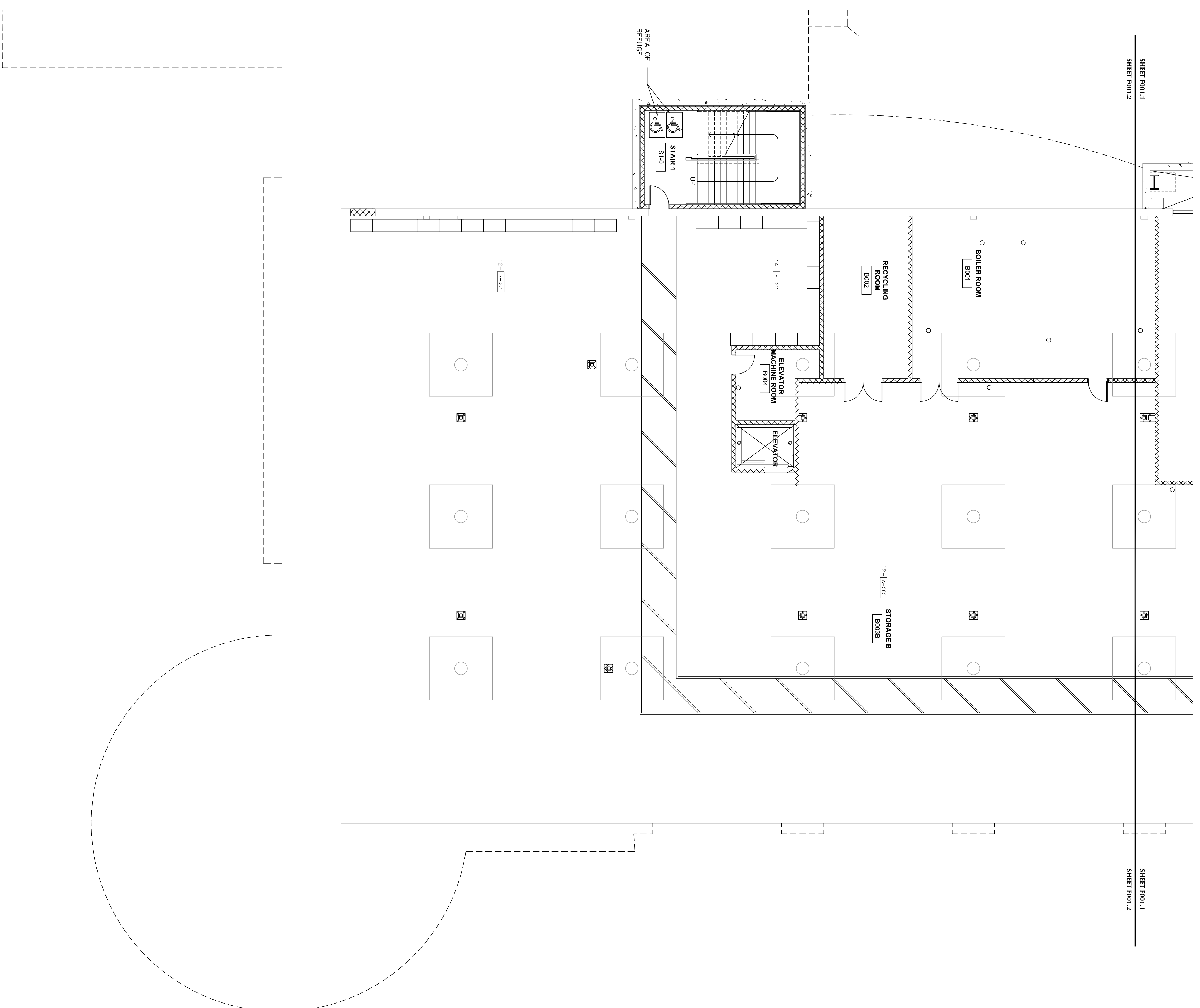
DATE: SEPTEMBER 26, 2011

SCALE: 1/8" = 1'-0"

PROJECT NUMBER: H090230

F-100.2

NO FURNITURE
 LOCATED IN THE
 AREAS OF A & C
 OF BUILDING



SHEET 100.1

SHEET 100.1

SHEET 100.2

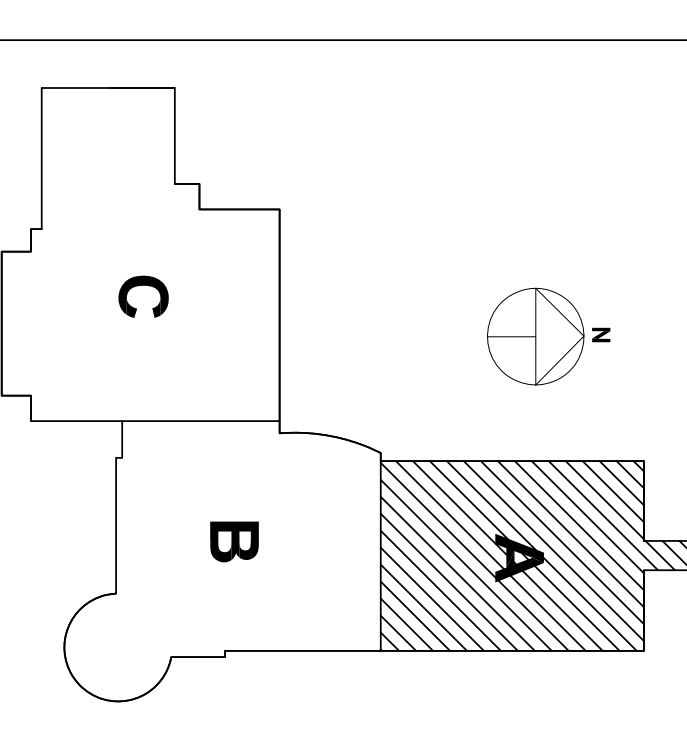
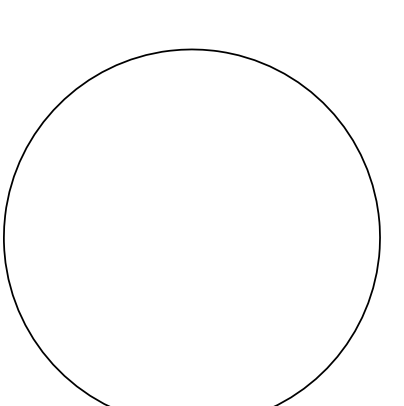


FIGURE 1-1 SITE MAP

NO.	DATE	DESCRIPTION

CODE COMPLIANCE NOTE:

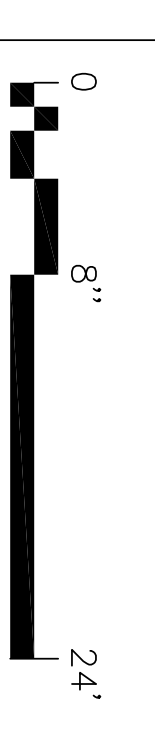
IN ORDER TO MEET THE NEEDS OF PERSONS WITH DISABILITIES, WHEN APPLICABLE ALL ITEMS SHALL BE COMPLIANT WITH THE CURRENT CONNECTICUT BUILDING CODE INCLUDING 2003 ICGCS A17.1, SECTION 504 REHABILITATION ACT 1973 INCLUDING LIFTS AND 2010 REGULATORY CODES AND STANDARDS WITH DISABILITIES ACT TITLE II INCLUDING THE CHANGING ROOMS AND SAN REVISIONS. ACCESSIBLE INSE CLEARANCES SHALL BE A MINIMUM OF 29" MIN. 27" HIGH, 34" CLEAR, AND 19" DEEP. COMPLIANCE WITH THE CURRENT CONNECTICUT BUILDING CODE IS ALSO REQUIRED WHEN APPLICABLE. THE FINISH SHALL INCLUDE, BUT ARE NOT LIMITED TO, FIXTURES, FINISHES, EQUIPMENT, WORKSTATIONS.



GENERAL MANAGER: J. COSTA
PROJECT MANAGER: A. CAHILL
CHECKED ARCHITECT: KEVIN KANG
DRAWN BY: ALL
PROJECT: ALL

GLASTONBURY EAST
HARTFORD
ELEMENTARY
MAGNET SCHOOL
95 OAK STREET,
GLASTONBURY, CT

STATE PROJECT NO. 044-005 MAGNIPS
STATE PROJECT NO. 044-005 MAGNIPS



FIRST FLOOR
FURNITURE PLAN -
PART A

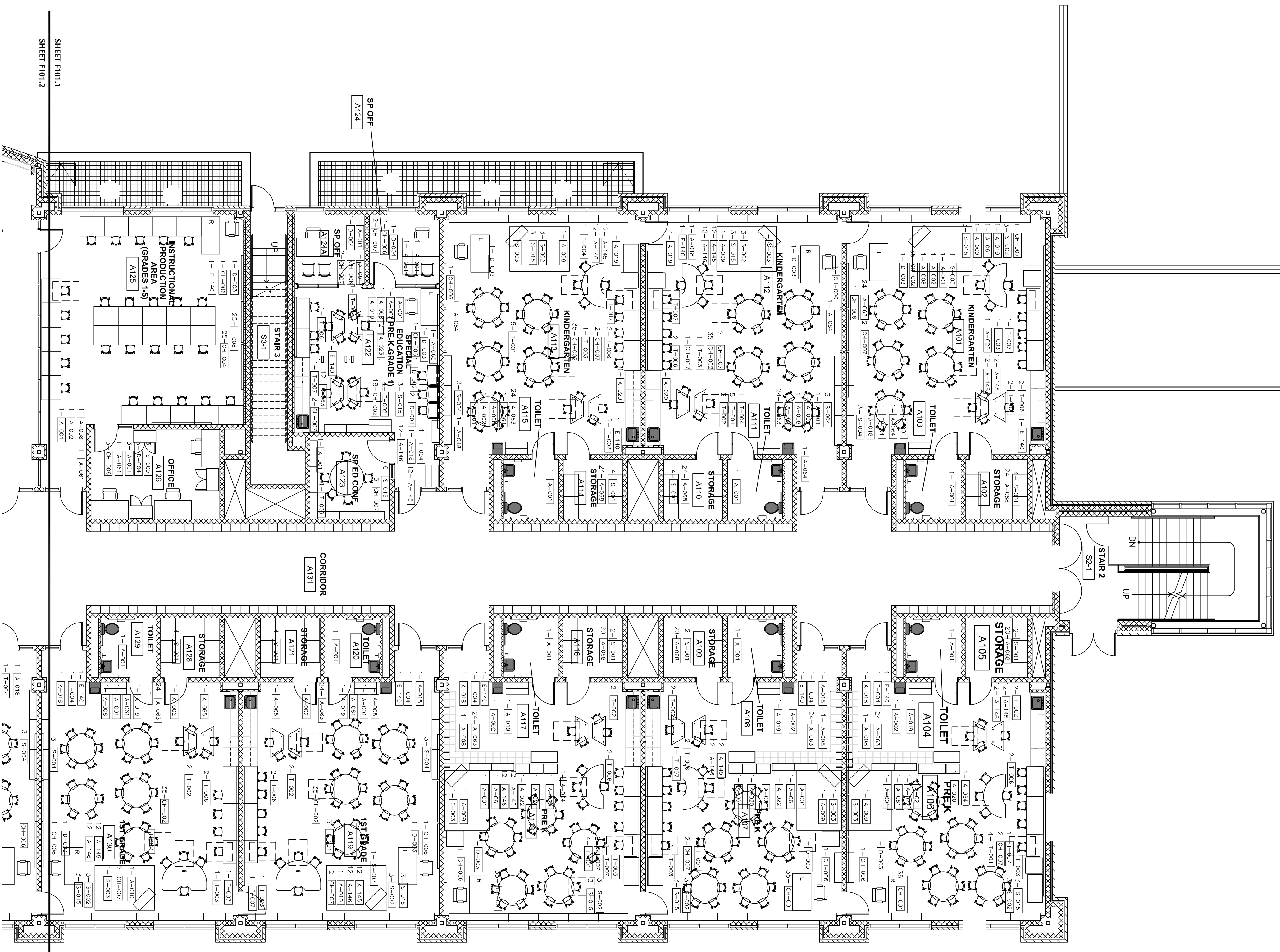
PHASE 3 OF 4

DATE: SEPTEMBER 26, 2011

SCALE: 1/8" = 1'-0"

PLOTTED BY: H090230

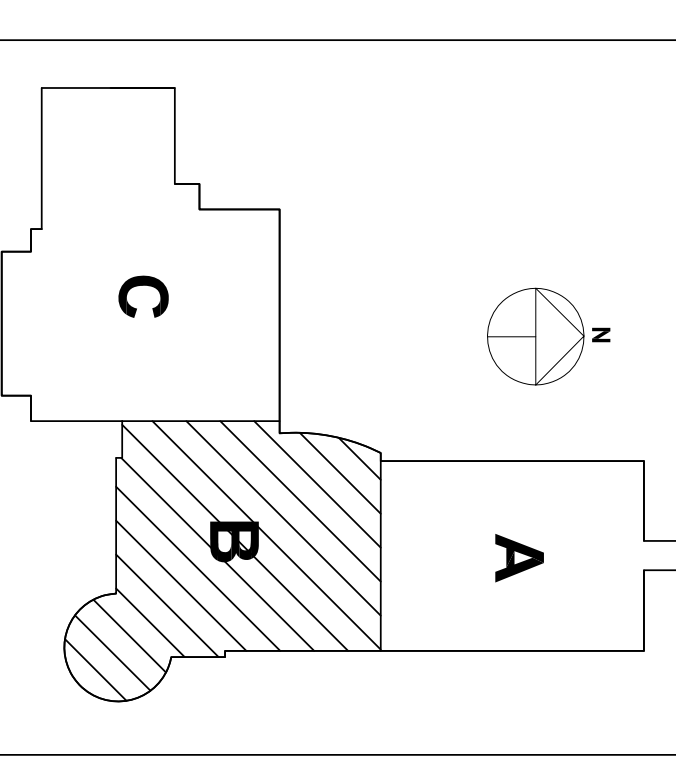
DRAWING NO. F-101.1



SHEET F101.1

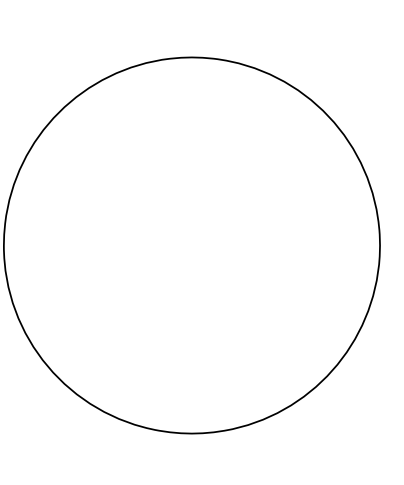
SHEET F101.2

THIS DRAWING IS THE PROPERTY OF FLETCHER THOMPSON ARCHITECTURE, ENGINEERING & INTERIOR DESIGN. IT IS TO BE USED ONLY FOR THE PROJECT AND SITE SPECIFICALLY IDENTIFIED HEREON. ANY REUSE OR MODIFICATION OF THIS DRAWING WITHOUT THE WRITTEN CONSENT OF FLETCHER THOMPSON ARCHITECTURE, ENGINEERING & INTERIOR DESIGN IS PROHIBITED.



NO.	REVISION	DATE

CODE COMPLIANCE NOTE:
 IN ORDER TO MEET THE NEEDS OF PERSONS WITH DISABILITIES, WHEN APPLICABLE ALL ITEMS SHALL BE COMPLIANT WITH THE CURRENT CONNECTICUT BUILDING CODE INCLUDING 2003 IBC (ANSI A17.1), SECTION 504 REHABILITATION ACT 1973 INCLUDING LIFESAFETY AND 2010 REGULATORY CODES AND STANDARDS WITH DISABILITIES ACT TITLE II INCLUDING THE CHIEF ENFORCEMENT AND ENFORCEMENT.
 ACCESSIBLE RISE CLEARANCES SHALL BE A MINIMUM OF 79" MIN. (27" MIN. 1.5" CLEAR), AND 19" MIN. COMPLIANT WITH THE CURRENT CONNECTICUT BUILDING CODE IS ALSO REQUIRED WHEN APPLICABLE TO FIXTURES, FURNISHINGS, EQUIPMENT, AND WORKSTATIONS.



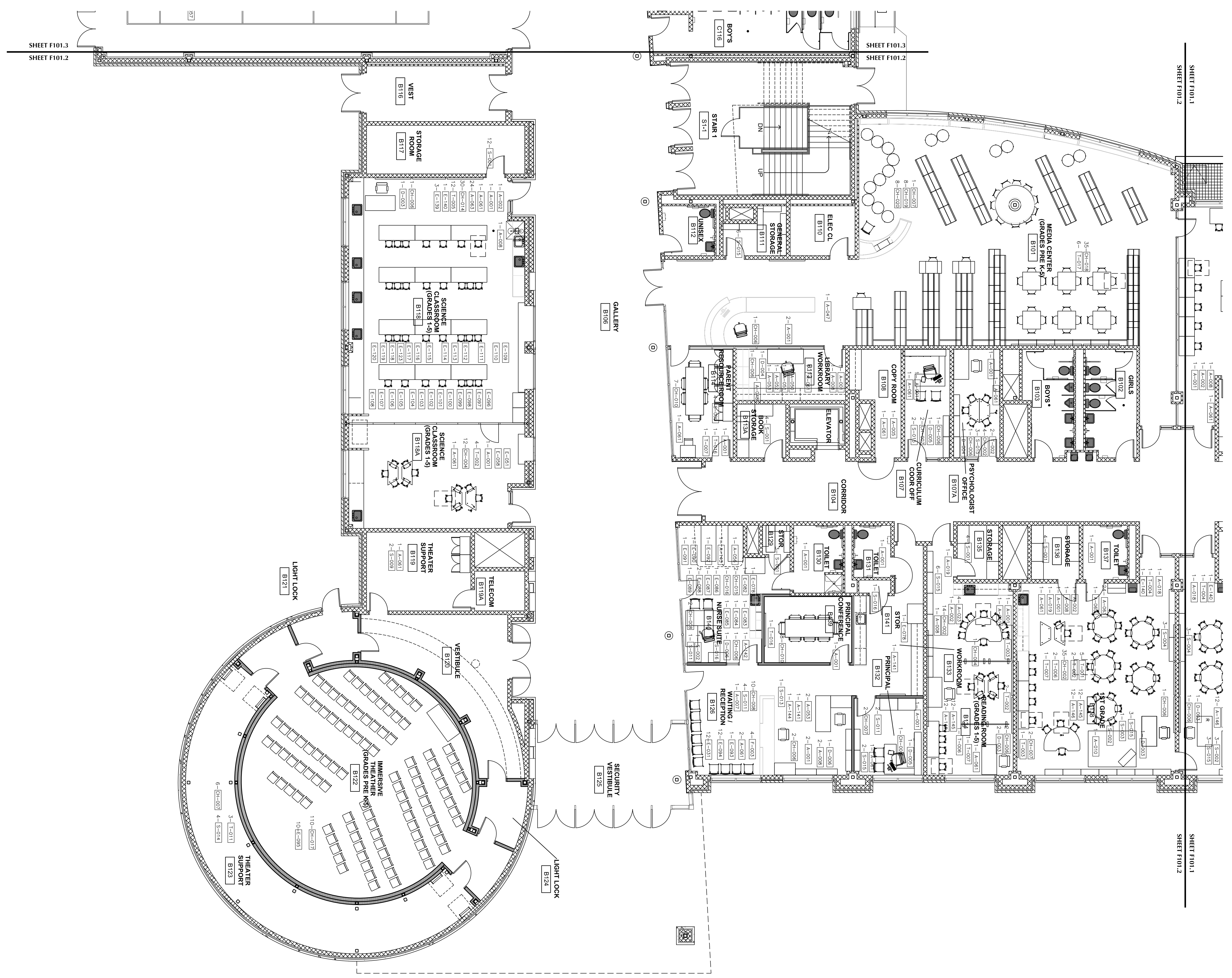
PROJECT ARCHITECT: J. COSTA
 PROJECT MANAGER: A. CAHILL
 ARCHITECT: K. RYAN
 ENGINEER: G.E.D.
 CONTRACTOR: ALL

GLASTONBURY EAST
 HARTFORD
 ELEMENTARY
 MAGNET SCHOOL
 95 OAK STREET,
 GLASTONBURY, CT

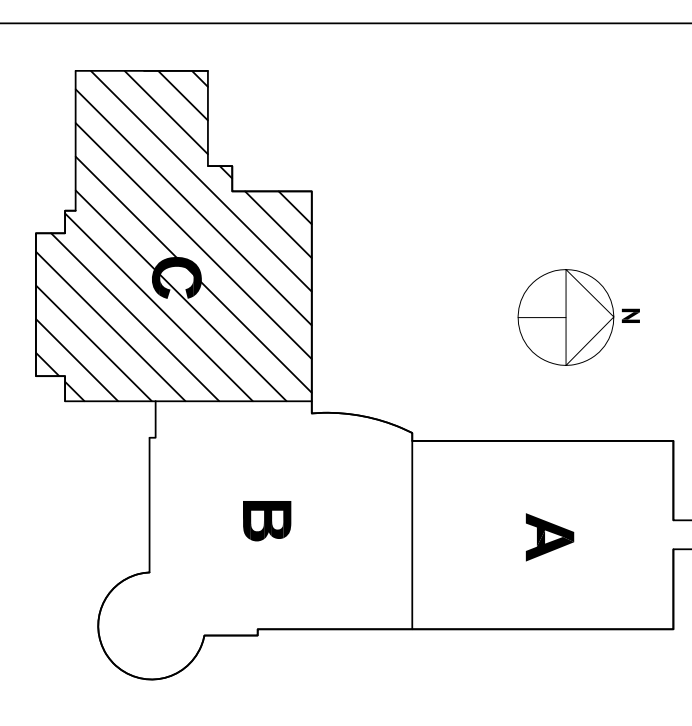
STATE PROJECT NO. 044-005 MAGNIPS
 STATE PROJECT NO. 044-005 MAGNIPS

DATE: SEPTEMBER 26, 2011
 SCALE: 1/8" = 1'-0"
 PROJECT NUMBER: H-090230
 DRAWING NO.: F-101.2

PHASE 3 OF 4
 FIRST FLOOR
 FURNITURE PLAN -
 PART B



13



NO.	DESCRIPTION

CODE COMPLIANCE NOTE:
IN ORDER TO MEET THE NEEDS OF PERSONS WITH DISABILITIES, WHEN APPLICABLE, ALL ITEMS SHALL BE PROVIDED IN ACCORDANCE WITH THE 2010 INTERNATIONAL BUILDING CODE INCLUDING 2003 ACCESSIBILITY STANDARDS AND 2010 INTERNATIONAL CODES AND REGULATIONS. THE UNIVERSAL DESIGN ACCESSIBILITY STANDARDS WITH DISABILITIES ACT TITLE II INCLUDING THE UNIVERSAL DESIGN AND 2010 REGULATIONS. ACCESSIBLE ELEVATORS SHALL BE A MINIMUM OF 36" WIDE, 27" HIGH (54" CLEAR), AND 70" DEEP. COMPLIANCE WITH THE CURRENT CONNECTICUT BUILDING CODE IS ALSO REQUIRED WHEN APPLICABLE TO FINISHES, FURNISHINGS, EQUIPMENT, AND WORKSTATIONS.

PROJECT NO.:	0644985
PROJECT NAME:	MANSUERS
PROJECT LOCATION:	95 OAK STREET, GLASTONBURY, CT
PROJECT DATE:	SEPTEMBER 26, 2011
PROJECT SCALE:	1/8" = 1'-0"
PROJECT DRAWN BY:	HOB90290
PROJECT CHECKED BY:	
PROJECT DATE:	
PROJECT SCALE:	

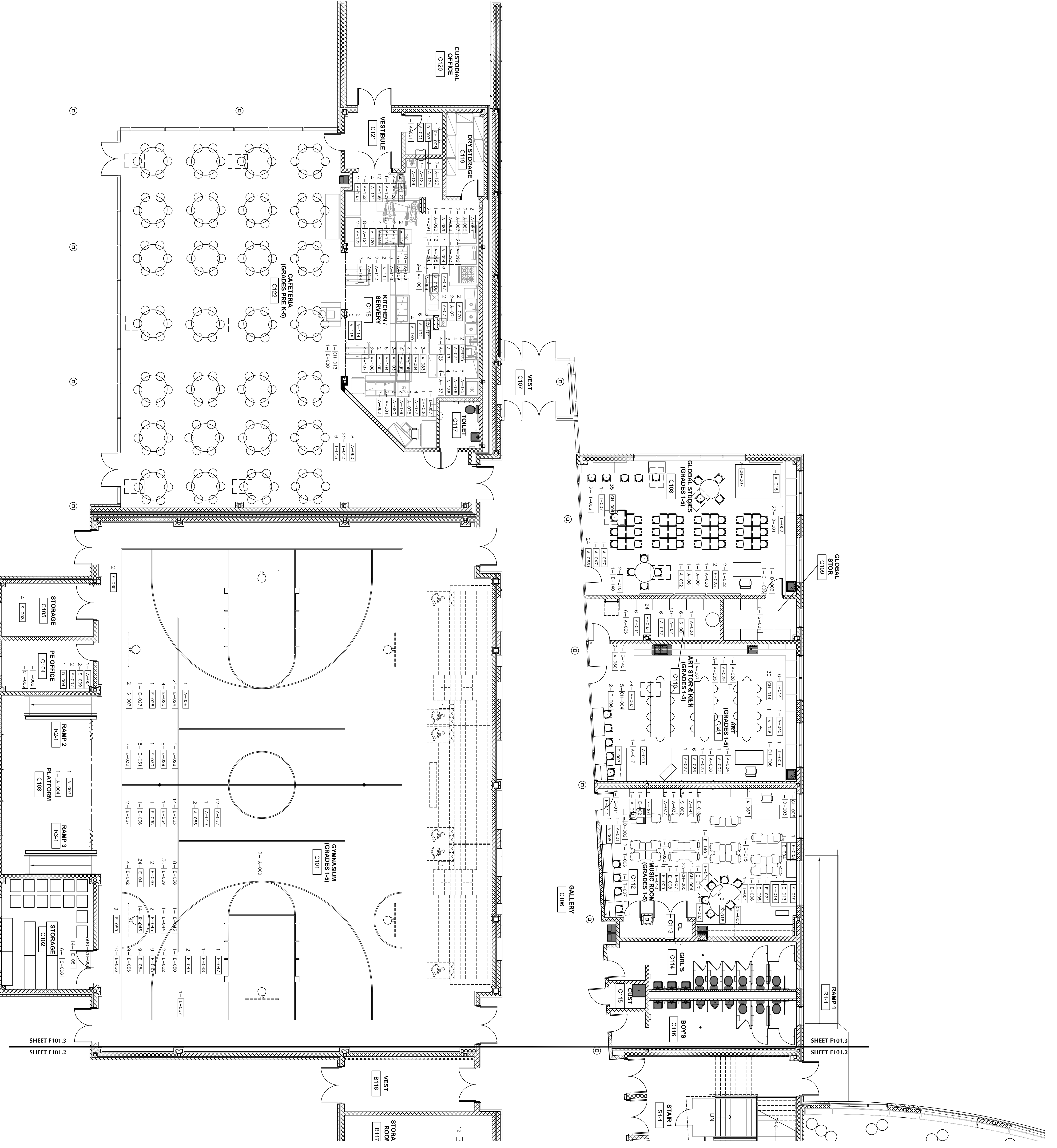
PHASE 3 OF 4

SEPTEMBER 26, 2011

1/8" = 1'-0"

HOB90290

F-101.3



FIRST FLOOR
FURNITURE PLAN -
PART C

PHASE 3 OF 4

SEPTEMBER 26, 2011

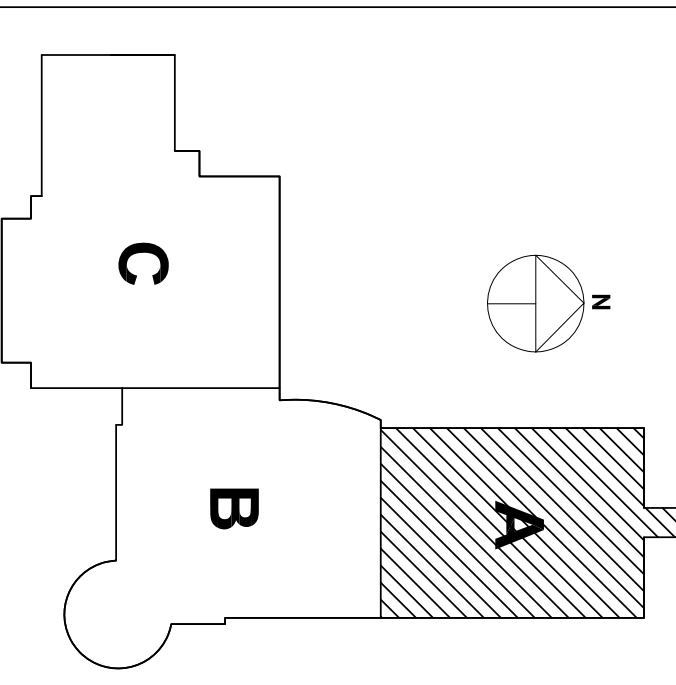
1/8" = 1'-0"

HOB90290

F-101.3

95 DARTMOUTH COLLEGE	0504-0506-0500
95 HARTFORD COLLEGE	0504-0507-0500
95 NEW HAVEN COLLEGE	0504-0508-0500
95 NEW YORK COLLEGE	0504-0509-0500
95 NORTHAMPTON COLLEGE	0504-0510-0500
95 QUINCY COLLEGE	0504-0511-0500
95 WESTCHESTER COLLEGE	0504-0512-0500
95 YALE COLLEGE	0504-0513-0500

THESE PLANS AND SPECIFICATIONS ARE THE PROPERTY OF FLETCHER THOMPSON ARCHITECTURE, ENGINEERING & INTERIOR DESIGN. THEY ARE TO BE USED ONLY FOR THE PROJECT AND SITE SPECIFICALLY IDENTIFIED THEREIN. NO PART OF THESE PLANS OR SPECIFICATIONS IS TO BE REPRODUCED OR TRANSMITTED IN ANY FORM OR BY ANY MEANS, ELECTRONIC OR MECHANICAL, WITHOUT THE WRITTEN PERMISSION OF FLETCHER THOMPSON ARCHITECTURE, ENGINEERING & INTERIOR DESIGN.

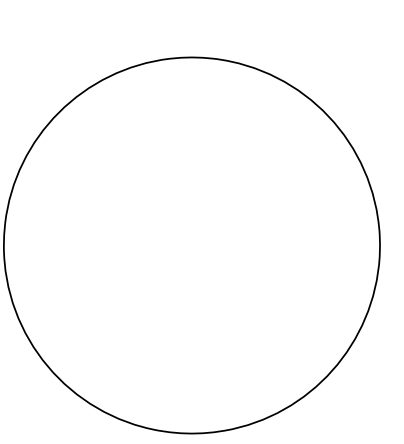


NO.	REVISION	DATE

CODE COMPLIANCE NOTE:

IN ORDER TO MEET THE NEEDS OF PERSONS WITH DISABILITIES, WHEN APPLICABLE ALL ITEMS SHALL BE COMPLIANT WITH THE CURRENT CONNECTICUT BUILDING CODE INCLUDING 2003 ICGS AND 171. SECTION 504 REHABILITATION ACT 1973 INCLUDING LENS AND 289B REGULATION CONCERNING STUDENTS WITH DISABILITIES ACT TITLE II INCLUDING THE AMERICANS WITH DISABILITIES ACT ACCESSIBILITY GUIDELINES FOR BUILDINGS AND OTHER REAL ESTATE ACCESSIBILITY INSTRUCTIONS SHALL BE A MINIMUM OF 36" WIDE BY 48" HIGH (24" CLEARANCE) AND 19" DEEP COMPLIANT WITH THE CURRENT CONNECTICUT ZONING ORDINANCE IS ALSO REQUIRED WHEN APPLICABLE TO FIXTURES, FURNISHINGS, EQUIPMENT, WORKSTATIONS.

PERSONAL INFORMATION:
PROJECT MANAGER: J. COSTA
OWNER: ACADEMY
PROJECT ARCHITECT / DESIGNER: KERVAN
DESIGNER: GED
CONTRACTOR: ALL
PROJECT: ALL



GLASTONBURY EAST
HARTFORD
ELEMENTARY
MAGNET SCHOOL
95 OAK STREET,
GLASTONBURY, CT

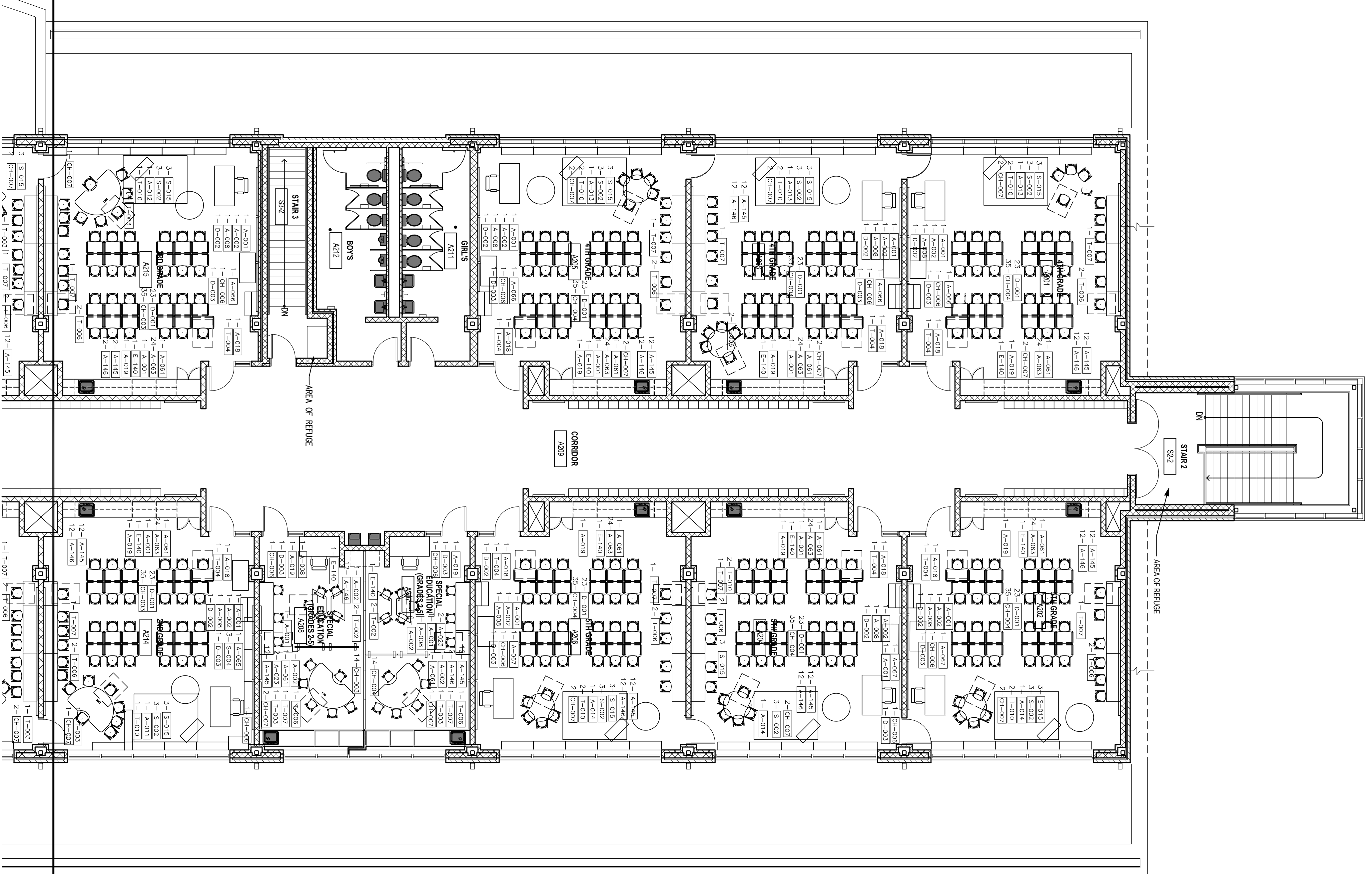
STATE PROJECT NO. 094-0095 MAGNIPS
STATE PROJECT NO. 094-0098 MAGNONS

0 8' 24'

SECOND FLOOR
FURNITURE PLAN -
PART A
PHASE 3 OF 4

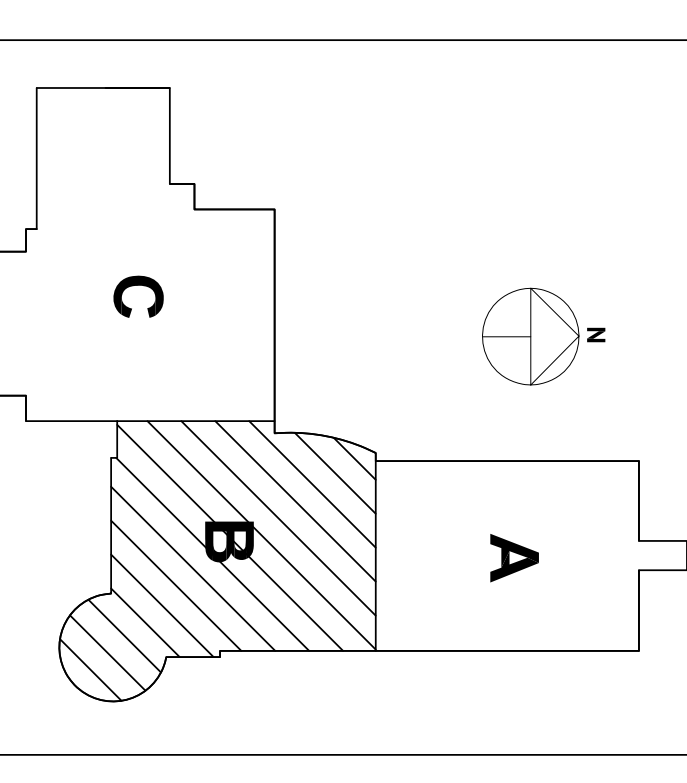
DATE: SEPTEMBER 26, 2011
SCALE: 1/8" = 1'-0"
PROJECT NUMBER: H-090230
DRAWING NO: F102.1

F102.1



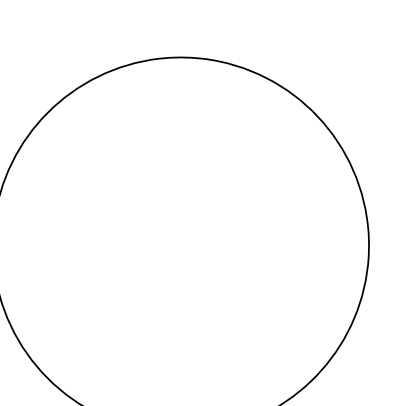
SHEET F102.1
SHEET F102.2

SHEET F102.1
SHEET F102.2



NO.	REVISION	DATE

CODE COMPLIANCE NOTE:
IN ORDER TO MEET THE NEEDS OF PERSONS WITH DISABILITIES, WHEN APPLICABLE ALL ITEMS SHALL BE COMPLIANT WITH THE CURRENT CONNECTICUT BUILDING CODE INCLUDING 2003 IBC/ANSI A17.1, SECTION 504 REHABILITATION ACT 1973 INCLUDING LIFTS) AND 2004 REGULATORY COMMISSION'S STANDARDS WITH DISABILITIES ACT TITLE II INCLUDING THE CURRENT BUILDING AND SIGN REGULATIONS.
ACCESSIBLE RISE CLEARANCES SHALL BE A MINIMUM OF 36" MIN. 27" MIN. 1.5" CLEAR, AND 19" MIN. COMPLIANT WITH THE CURRENT CONNECTICUT ZONING IS ALSO REQUIRED WHEN APPLICABLE TO FIXTURES, FURNISHINGS, EQUIPMENT, WORKSTATIONS.



PRINCIPAL ARCHITECT: J. COSTA
PROJECT MANAGER: A. CAHILL
CHECKED ARCHITECT: KERVAN
DRAWN BY: GJG
SCALE: ALL

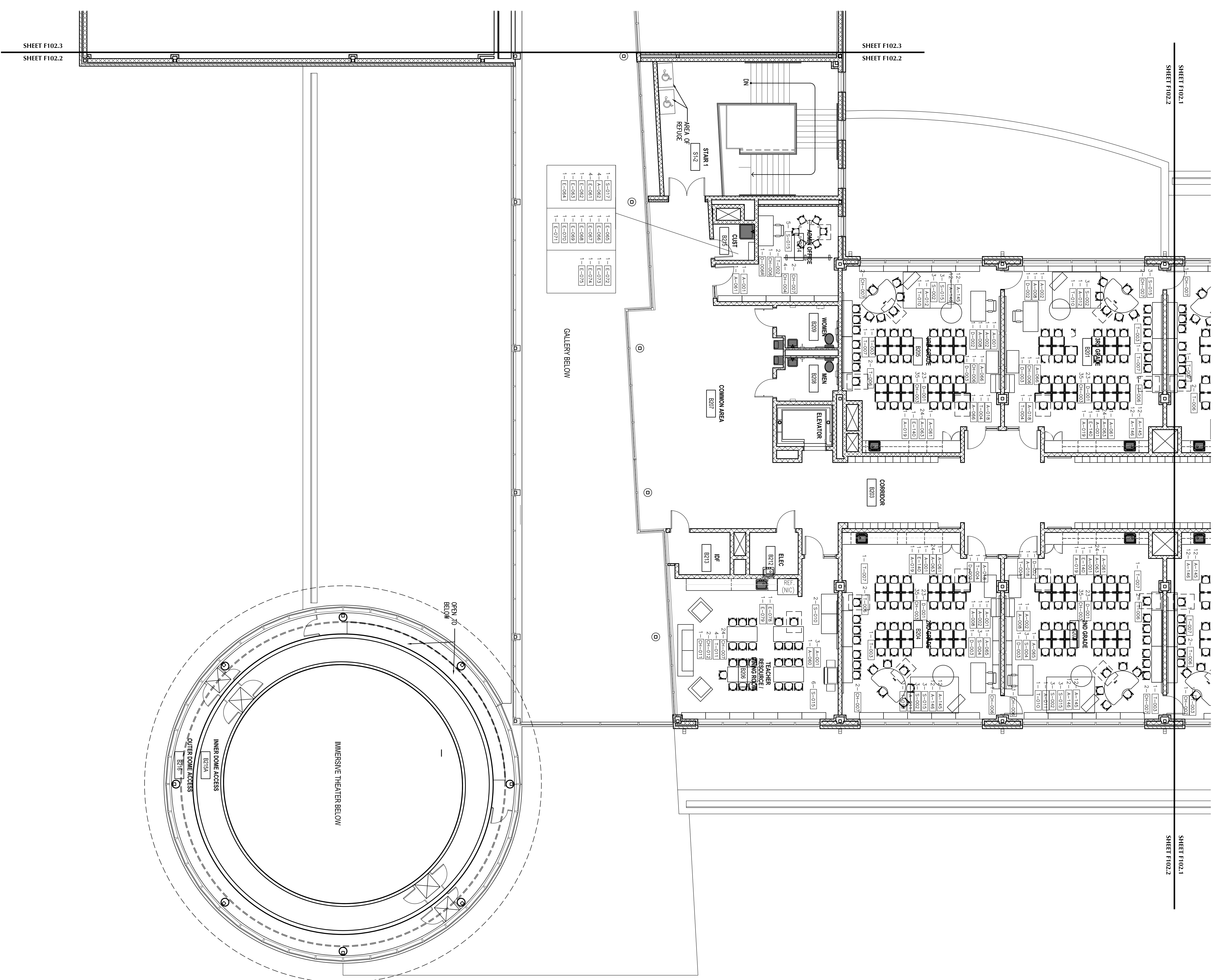
GLASTONBURY EAST
HARTFORD
ELEMENTARY
MAGNET SCHOOL
95 OAK STREET,
GLASTONBURY, CT

STATE PROJECT NO. 094-0085 MAGNIPS
STATE PROJECT NO. 094-0085 MAGNIPS

0 8" 24'
DRAWING TITLE
SECOND FLOOR
FURNITURE PLAN -
PART B
PHASE 3 OF 4

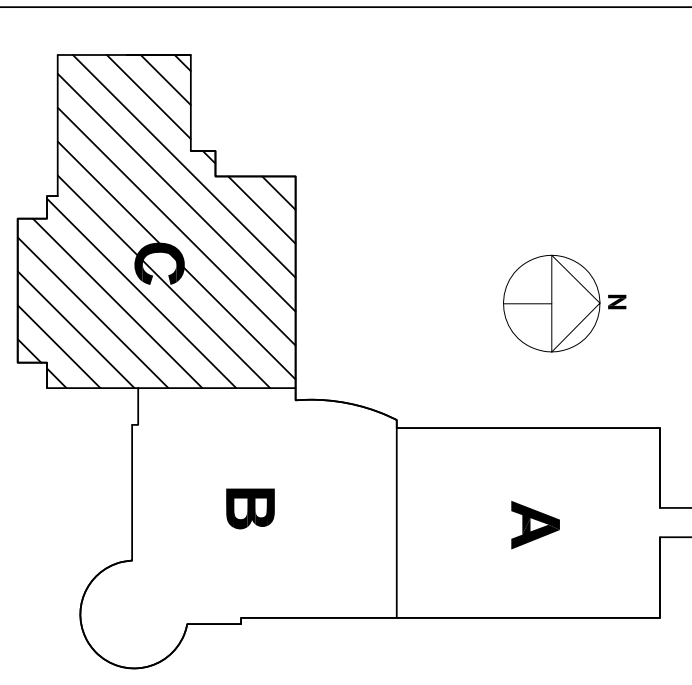
DATE: SEPTEMBER 26, 2011
SCALE: 1/8" = 1'-0"

PROJECT NUMBER: H-090230
DRAWING NO.: F-102.2



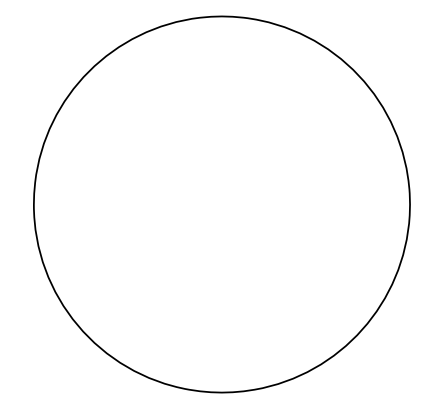
1 - E-217	1 - E-272	1 - E-273
1 - E-265	1 - E-274	1 - E-275
1 - E-267	1 - E-276	1 - E-277
1 - E-268	1 - E-278	1 - E-279
1 - E-269	1 - E-280	1 - E-281
1 - E-270	1 - E-282	1 - E-283
1 - E-271	1 - E-284	1 - E-285

SHEET F102.1
SHEET F102.2
SHEET F102.3



NO.	DATE	DESCRIPTION

CODE COMPLIANCE NOTE:
 IN ORDER TO MEET THE NEEDS OF PERSONS WITH DISABILITIES, WHEN APPLICABLE ALL ITEMS SHALL BE COMPLIANT WITH THE CURRENT CONNECTICUT BUILDING CODE INCLUDING 2003 IBC/ANSI A17.1, SECTION 504 REHABILITATION ACT 1973 INCLUDING LIFTS AND 2004 REGULATIONS UNDER THE AMERICANS WITH DISABILITIES ACT TITLE II INCLUDING THE CHURCH AND RELATED INSTITUTIONS. ACCESSIBLE RISE CLEARANCES SHALL BE A MINIMUM OF 79" MIN. (27' HIGH), 34" CLEAR, AND 19" CLEAR. COMPLIANT WITH THE CURRENT CONNECTICUT ZONING ORDINANCE. THE FINISH SHALL INCLUDE, BUT ARE NOT LIMITED TO: FIXTURES, FURNISHINGS, EQUIPMENT, WORKSTATIONS.



PROJECT ARCHITECT	J. COSTA
PROJECT MANAGER	A. CAHILL
PROJECT ARCHITECT / DESIGNER	K. RYAN
DESIGNER	GGZ
CONTRACTOR	ALL
DATE	

**GLASTONBURY EAST
 HARTFORD
 ELEMENTARY
 MAGNET SCHOOL
 95 OAK STREET,
 GLASTONBURY, CT**

STATE PROJECT NO. 044-0095 MAGNIPS
 STATE PROJECT NO. 044-0095 MAGNIPS

DATE: SEPTEMBER 26, 2011
 SCALE: 1/8" = 1'-0"
 PROJECT NUMBER: H090230
 DRAWING NO.

SECOND FLOOR
 PLAN - PART C
 PHASE 3 OF 4
A-102.3

