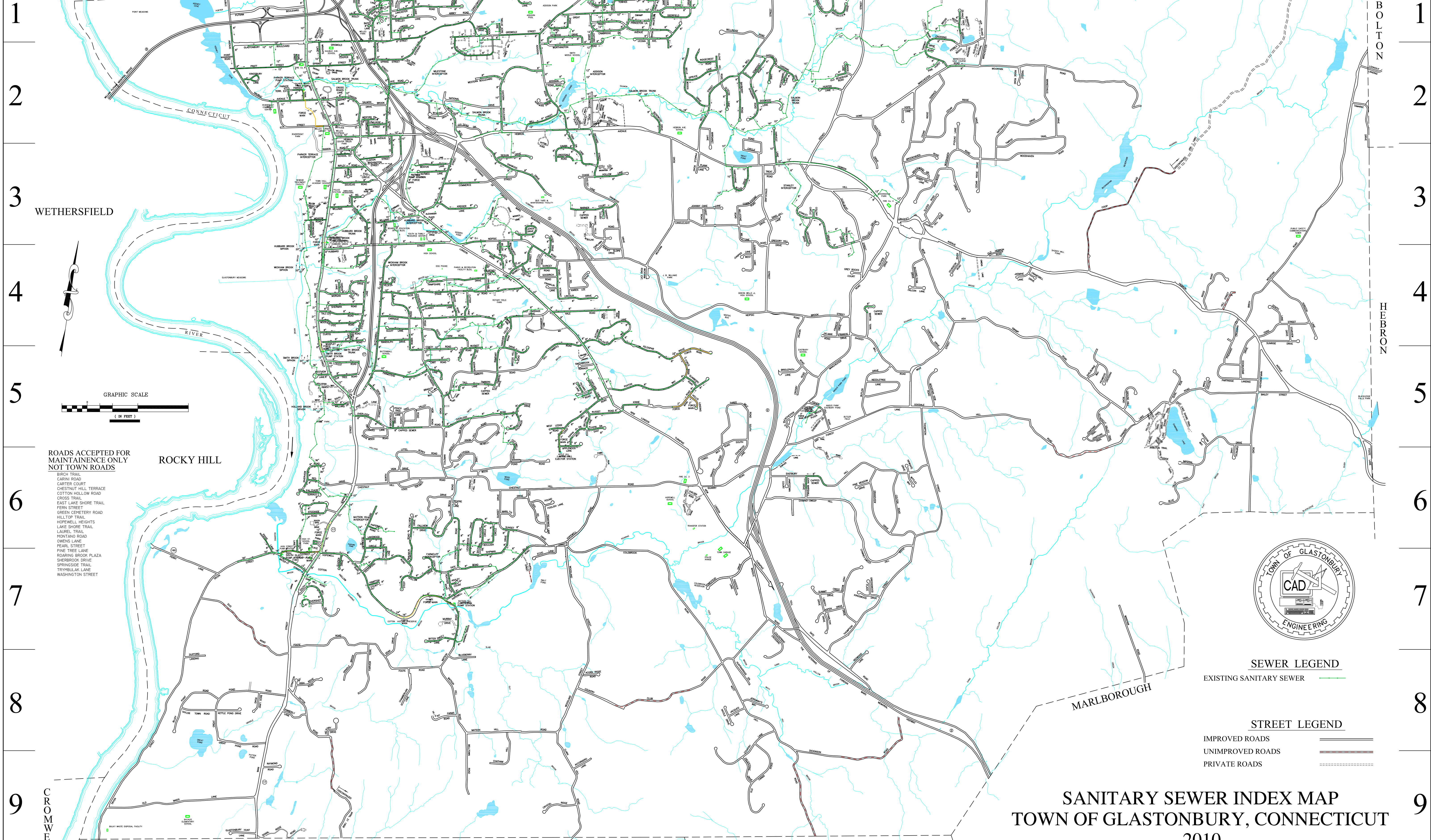


A B C D E F G H I J K L M

WETHERSFIELD EAST HARTFORD MANCHESTER



1  
2  
3  
4  
5  
6  
7  
8  
9

1  
2  
3  
4  
5  
6  
7  
8  
9

WETHERSFIELD

ROCKY HILL

BOLTON  
HARRO

MARLBOROUGH

PORTLAND

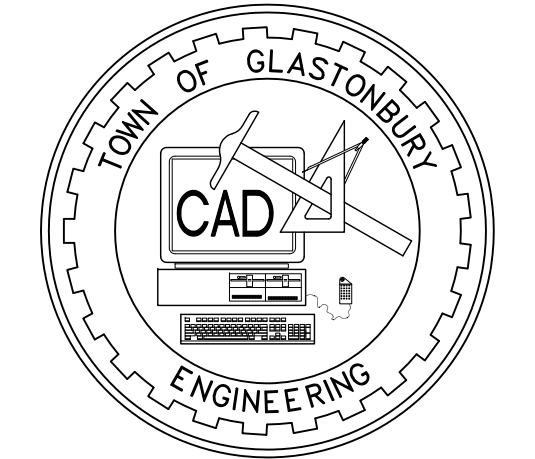
EAST HAMPTON

CROWELL

A B C D E F G H I J K L M

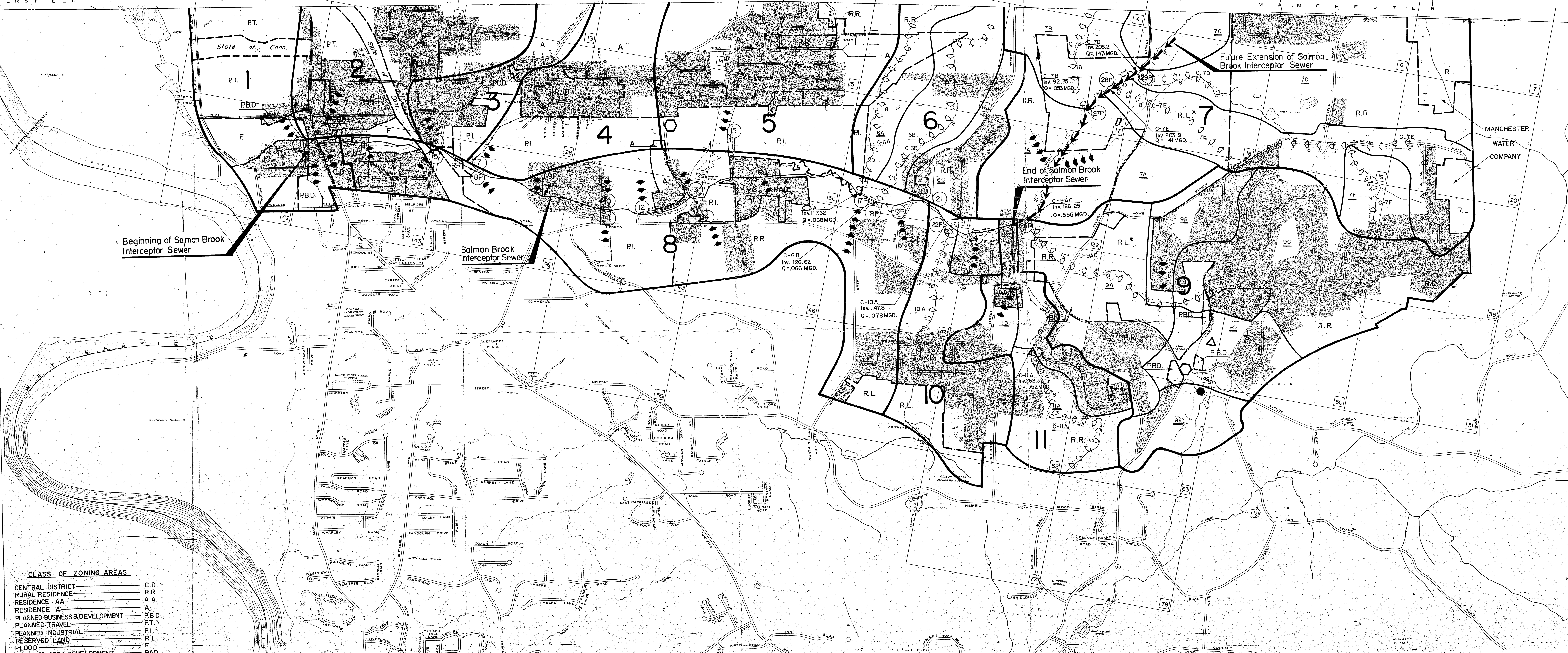
**SANITARY SEWER INDEX MAP**  
**TOWN OF GLASTONBURY, CONNECTICUT**  
 2010

- ROADS ACCEPTED FOR MAINTAINENCE ONLY NOT TOWN ROADS**
- BIRCH TRAIL
  - CARINI ROAD
  - CARTER COURT
  - CHESTNUT HILL TERRACE
  - COTTON HOLLOW ROAD
  - CROSS TRAIL
  - EAST LAKE SHORE TRAIL
  - FERN STREET
  - GREEN CEMETERY ROAD
  - HILLTOP TRAIL
  - HOPEWELL HEIGHTS
  - LAKE SHORE TRAIL
  - LAUREL TRAIL
  - MONTANO ROAD
  - OWENS LANE
  - PEARL STREET
  - FINE TREE LANE
  - ROARING BROOK PLAZA
  - SHERBROOK DRIVE
  - SPRINGSIDE TRAIL
  - TRYMBULAK LANE
  - WASHINGTON STREET



- SEWER LEGEND**
- EXISTING SANITARY SEWER
- STREET LEGEND**
- IMPROVED ROADS
  - UNIMPROVED ROADS
  - PRIVATE ROADS





**LEGEND**

- LIMIT OF SUBDRAINAGE AREA
- EXISTING SANITARY SEWER
- NO. OF 100 SCALE TOWN MAP DRAWINGS
- LIMIT OF ZONING AREA
- CONNECTION NO.
- LIMIT OF DEVELOPED AREAS
- ANTICIPATED DIRECTION OF SEWAGE FLOW
- ASSUMED TO BE FUTURE VILLAGE COMMERCIAL DEV.
- ASSUMED TO BE FUTURE SCHOOL SITE
- BUCKINGHAM VILLAGE DEVELOPMENT
- LIMIT OF SUBTRIBUTARY ZONES
- SUBTRIBUTARY ZONE NUMBER
- COLLECTOR NUMBER
- EXTENSION OF SALMON BROOK INTERCEPTOR
- DIRECTION OF FLOW OF PROPOSED COLLECTOR

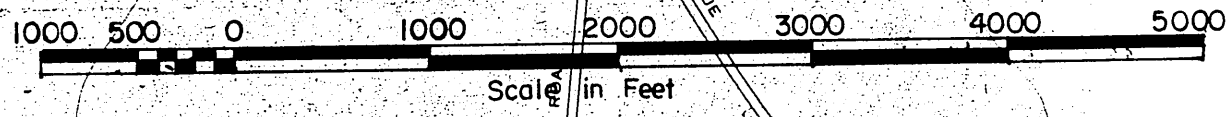
**NOTE:**  
R.L.\* IN AREAS NO. 7 & 9 INDICATES M.D.C. LAND ASSUMED TO BE R.R. ZONING PER DIRECTION OF TOWN PLANNER.

## "SERVICE AREA PLAN"



### TOWN OF GLASTONBURY ADDENDUM TO MASTER PLAN UPDATE FOR SALMON BROOK INTERCEPTOR SANITARY SEWER

**JAMES P. PURCELL ASSOCIATES, INC.**  
CONSULTING ENGINEERS - GLASTONBURY, CONNECTICUT



**DRAWING NO. 2A**

**CLASS OF ZONING AREAS**

CENTRAL DISTRICT	C.D.
RURAL RESIDENCE	R.R.
RESIDENCE A.A.	A.A.
RESIDENCE A	A
PLANNED BUSINESS & DEVELOPMENT	P.B.D.
PLANNED TRAVEL	P.T.
PLANNED INDUSTRIAL	P.I.
RESERVED LAND	R.L.
FLOOD	F
PLANNED DEVELOPMENT	P.A.D.



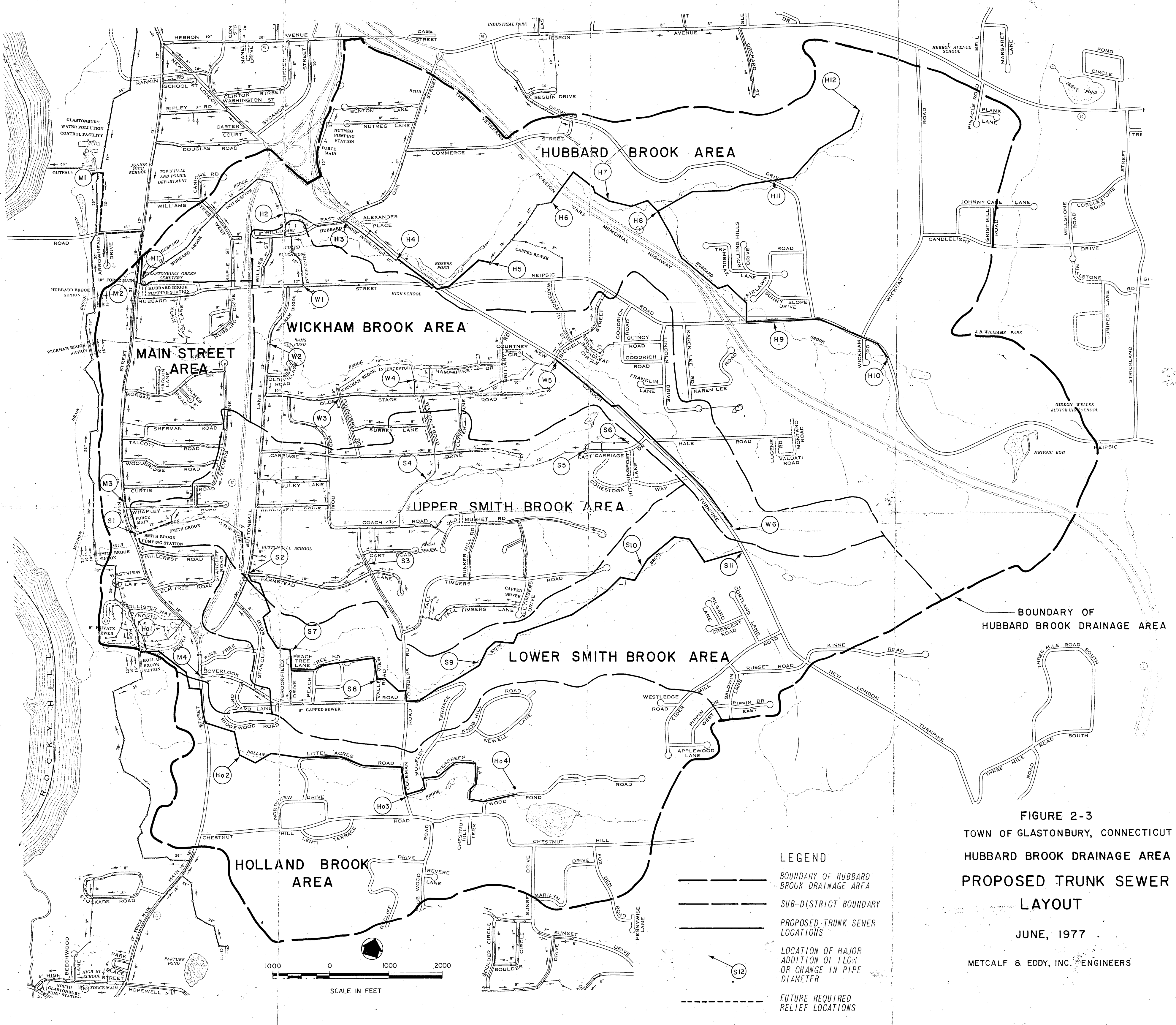
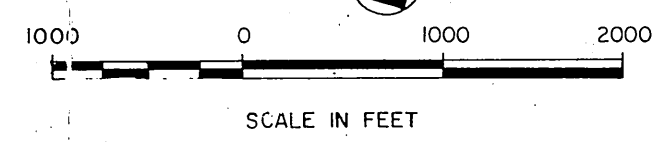


FIGURE 2-3  
 TOWN OF GLASTONBURY, CONNECTICUT  
 HUBBARD BROOK DRAINAGE AREA  
 PROPOSED TRUNK SEWER  
 LAYOUT

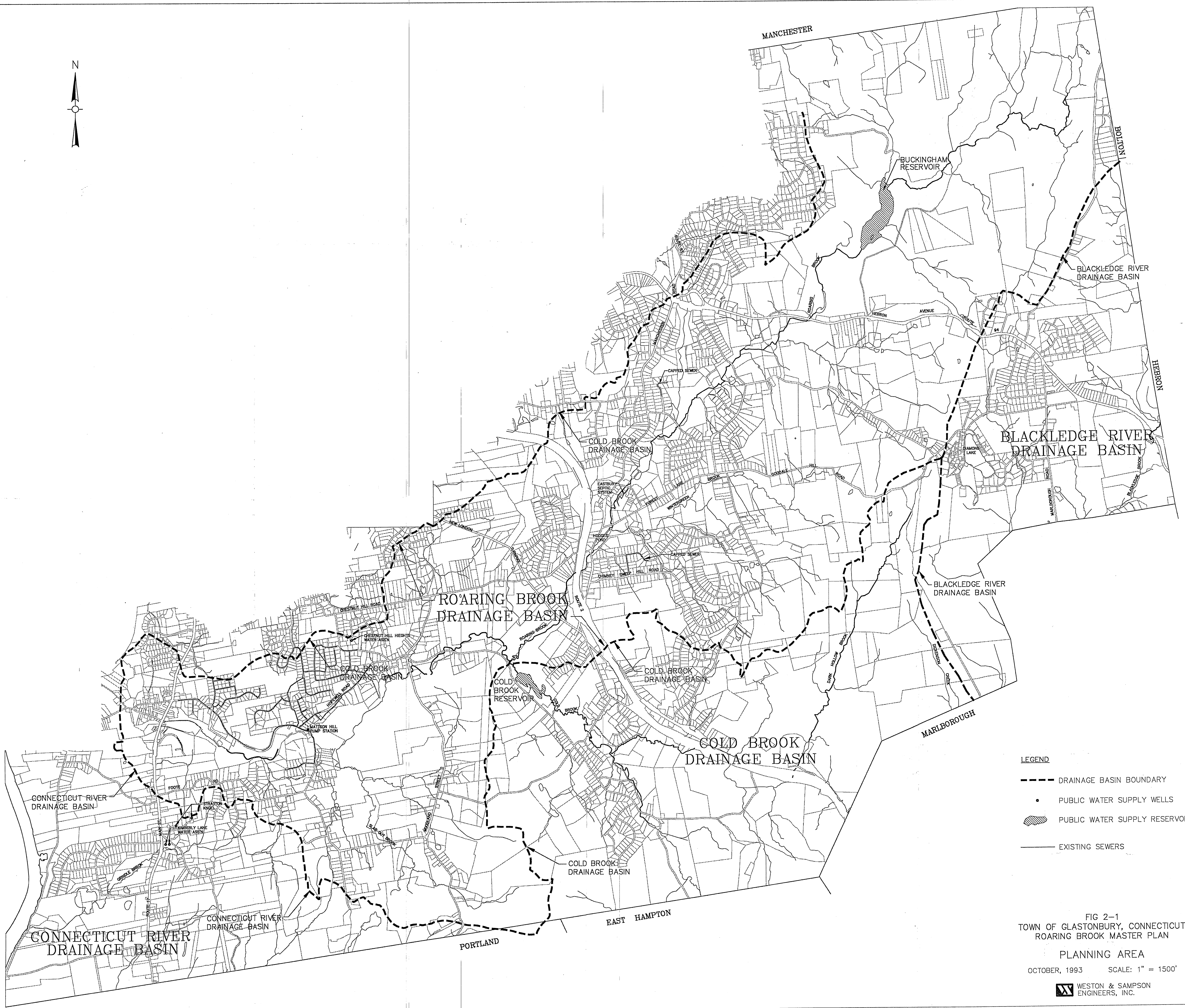
JUNE, 1977

METCALF & EDDY, INC. ENGINEERS

- LEGEND
- BOUNDARY OF HUBBARD BROOK DRAINAGE AREA
  - SUB-DISTRICT BOUNDARY
  - PROPOSED TRUNK SEWER LOCATIONS
  - LOCATION OF MAJOR ADDITION OF FLOW OR CHANGE IN PIPE DIAMETER
  - FUTURE REQUIRED RELIEF LOCATIONS







- LEGEND**
- DRAINAGE BASIN BOUNDARY
  - PUBLIC WATER SUPPLY WELLS
  - ▨ PUBLIC WATER SUPPLY RESERVOIR
  - EXISTING SEWERS


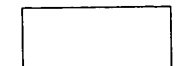
FIG 2-1  
TOWN OF GLASTONBURY, CONNECTICUT  
ROARING BROOK MASTER PLAN  
PLANNING AREA  
OCTOBER, 1993 SCALE: 1" = 1500'  
WESTON & SAMPSON  
ENGINEERS, INC.

PROJECT: GASTONBURY-1

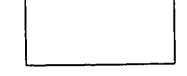


**LEGEND**

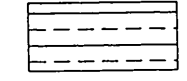
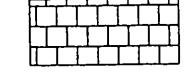
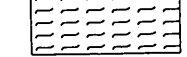
**RESIDENTIAL AREAS**

-  SUBURBAN 2-3 DWELLING UNITS / ACRE
-  FRINGE SUBURBAN 1 DWELLING UNIT / ACRE
-  RURAL RESIDENCE 1 DWELLING UNIT / 2 ACRES

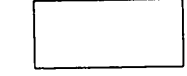
**RURAL**



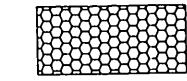


**SUBURBAN**

-  TOWN CENTER
-  CENTRAL BUSINESS DISTRICT
-  MAJOR ACTIVITY CENTER

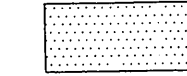
**EMPLOYMENT**



**PUBLIC & QUASI PUBLIC PROPERTIES**

-  OPEN SPACE & WATERSHED
-  POTENTIAL STATE ACQUISITION AND/OR EASEMENT
-  POTENTIAL MUNICIPAL ACQUISITION AND/OR EASEMENT

**FLOODPLAIN 100 YEAR & MEADOWS**



**STREAMBELTS**

-  POTENTIAL ACQUISITION OR EASEMENT

**TRANSPORTATION**

-  PROPOSED ROADS

**VILLAGE CENTER**

-  SOUTH GLASTONBURY

**CONVENIENCE COMMERCIAL CENTERS**

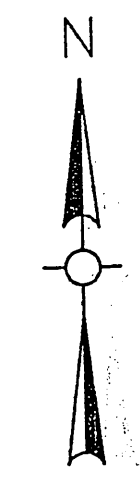
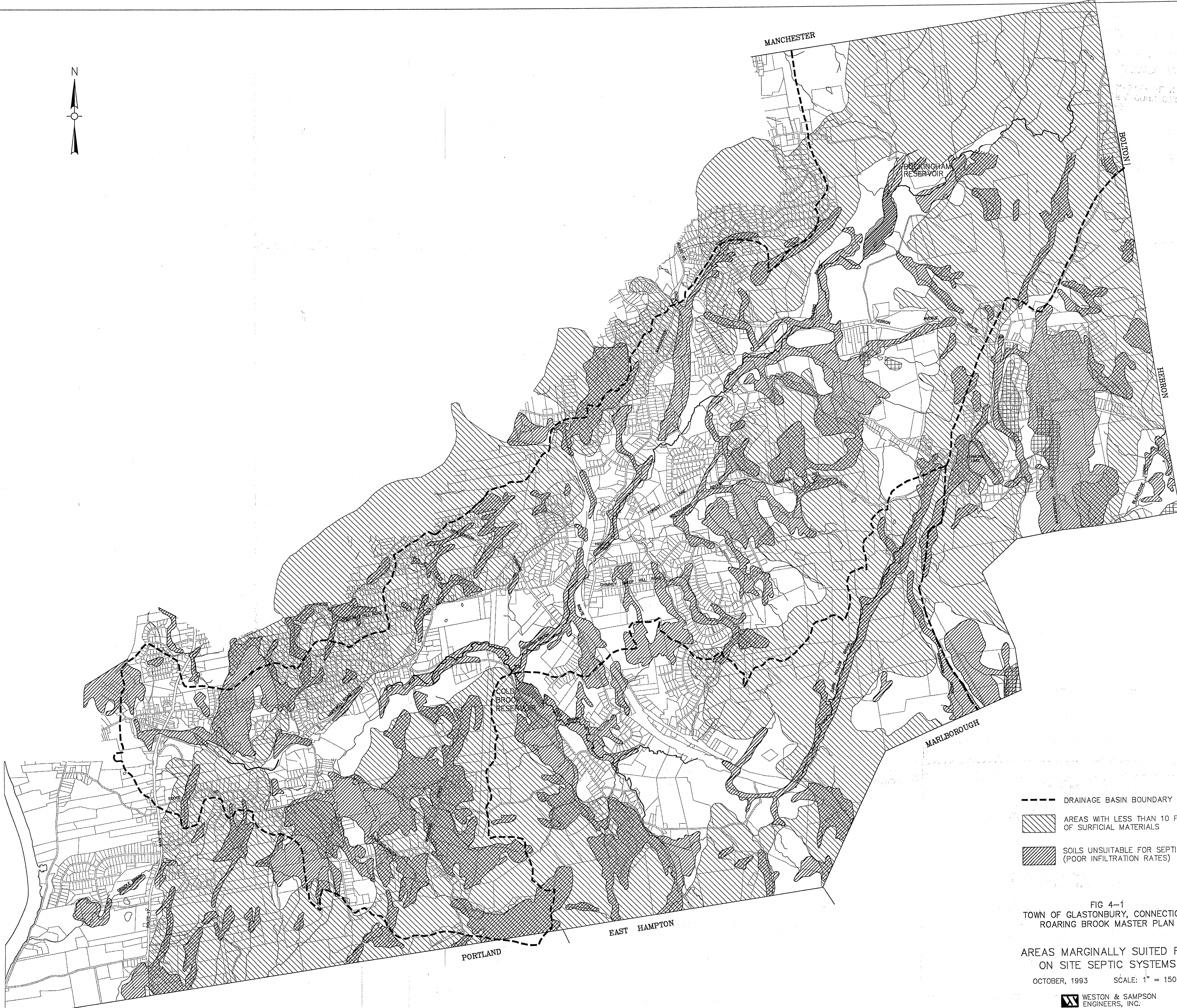
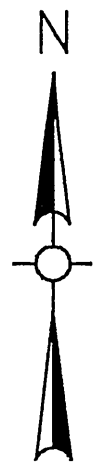


FIG 3-1  
TOWN OF GLASTONBURY, CONNECTICUT  
ROARING BROOK MASTER PLAN  
PLAN OF DEVELOPMENT  
OCTOBER, 1993 SCALE: 1" = 1500'

WESTON & SAMPSON  
ENGINEERS, INC.

PROJECTS\GLASTY\FIG-1





- DRAINAGE BASIN BOUNDARY
- [Diagonal hatching] AREAS WITH LESS THAN 10 FEET OF SURFICIAL MATERIALS
- [Cross-hatching] SOILS UNSUITABLE FOR SEPTIC (POOR INFILTRATION RATES)

FIG 4-1  
TOWN OF GLASTONBURY, CONNECTICUT  
ROARING BROOK MASTER PLAN

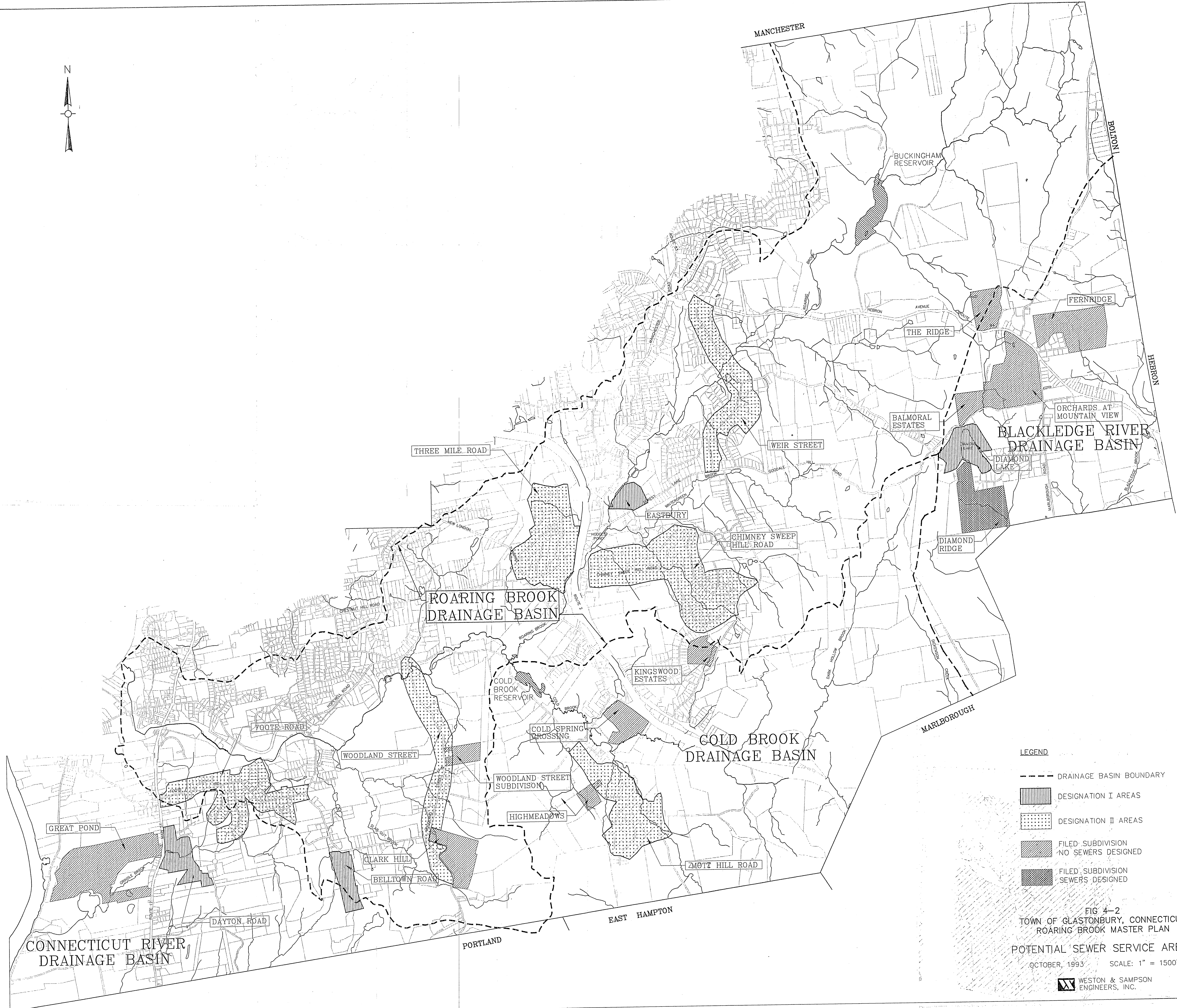
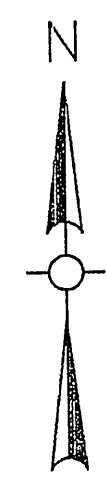
AREAS MARGINALLY SUITED FOR  
ON SITE SEPTIC SYSTEMS

OCTOBER, 1993 SCALE: 1" = 1500'



PROJECT'S CLARITY 10-1





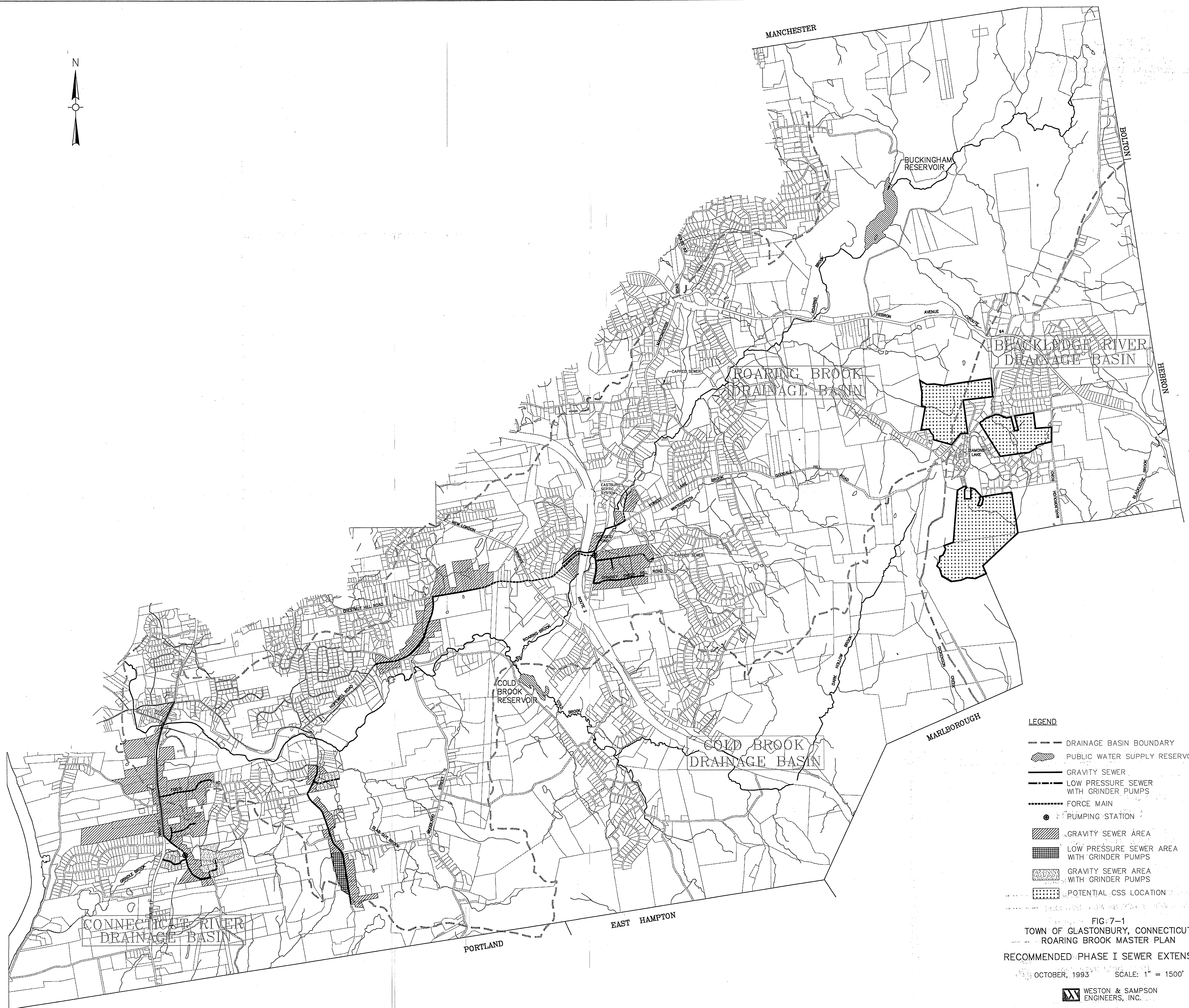
- LEGEND**
- DRAINAGE BASIN BOUNDARY
  - [Vertical Hatching] DESIGNATION I AREAS
  - [Dotted Pattern] DESIGNATION II AREAS
  - [Diagonal Hatching] FILED SUBDIVISION NO SEWERS DESIGNED
  - [Cross-hatching] FILED SUBDIVISION SEWERS DESIGNED

FIG 4-2  
TOWN OF GLASTONBURY, CONNECTICUT  
ROARING BROOK MASTER PLAN  
POTENTIAL SEWER SERVICE AREAS  
OCTOBER, 1993 SCALE: 1" = 1500'

WESTON & SAMPSON  
ENGINEERS, INC.

PROJECT: GASTONBURY-2





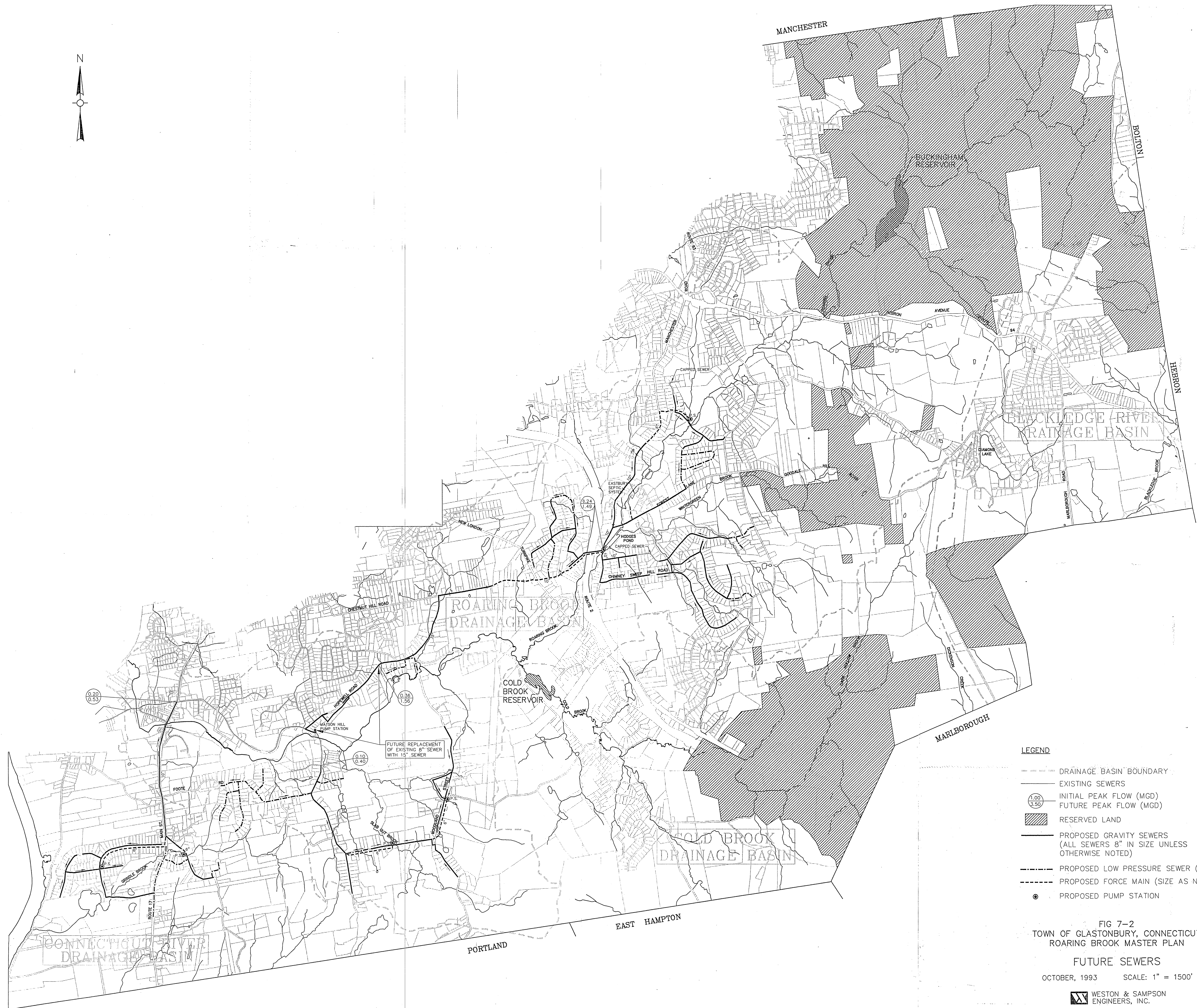
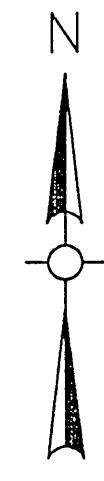
LEGEND

- DRAINAGE BASIN BOUNDARY
- ▨ PUBLIC WATER SUPPLY RESERVOIR
- GRAVITY SEWER
- - - - - LOW PRESSURE SEWER WITH GRINDER PUMPS
- · · · · FORCE MAIN
- PUMPING STATION
- ▨ GRAVITY SEWER AREA
- ▩ LOW PRESSURE SEWER AREA WITH GRINDER PUMPS
- ▧ GRAVITY SEWER AREA WITH GRINDER PUMPS
- ▤ POTENTIAL CSS LOCATION

FIG. 7-1  
TOWN OF GLASTONBURY, CONNECTICUT  
ROARING BROOK MASTER PLAN  
RECOMMENDED PHASE I SEWER EXTENSIONS

OCTOBER, 1993 SCALE: 1" = 1500'





- LEGEND**
- DRAINAGE BASIN BOUNDARY
  - EXISTING SEWERS
  - INITIAL PEAK FLOW (MGD)  
○ FUTURE PEAK FLOW (MGD)
  - ▨ RESERVED LAND
  - PROPOSED GRAVITY SEWERS  
(ALL SEWERS 8" IN SIZE UNLESS OTHERWISE NOTED)
  - PROPOSED LOW PRESSURE SEWER (2")
  - PROPOSED FORCE MAIN (SIZE AS NOTED)
  - PROPOSED PUMP STATION

FIG 7-2  
TOWN OF GLASTONBURY, CONNECTICUT  
ROARING BROOK MASTER PLAN

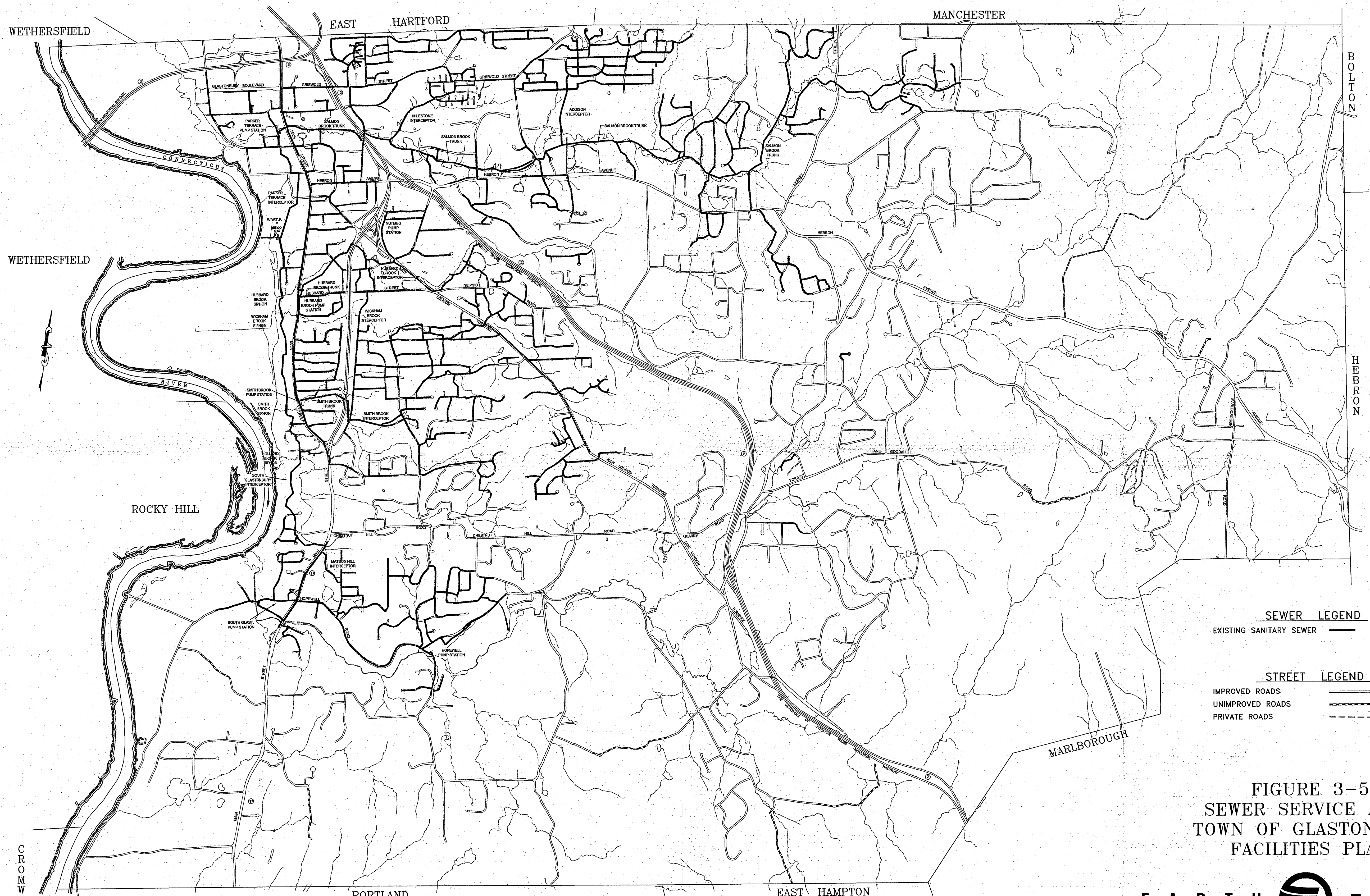
FUTURE SEWERS

OCTOBER, 1993 SCALE: 1" = 1500'

WESTON & SAMPSON  
ENGINEERS, INC.

PROJECT: GASTONBURY-1





- SEWER LEGEND**  
 EXISTING SANITARY SEWER ———
- STREET LEGEND**  
 IMPROVED ROADS ———  
 UNIMPROVED ROADS ———  
 PRIVATE ROADS - - - - -

**FIGURE 3-5**  
**SEWER SERVICE AREA**  
**TOWN OF GLASTONBURY**  
**FACILITIES PLAN**

