

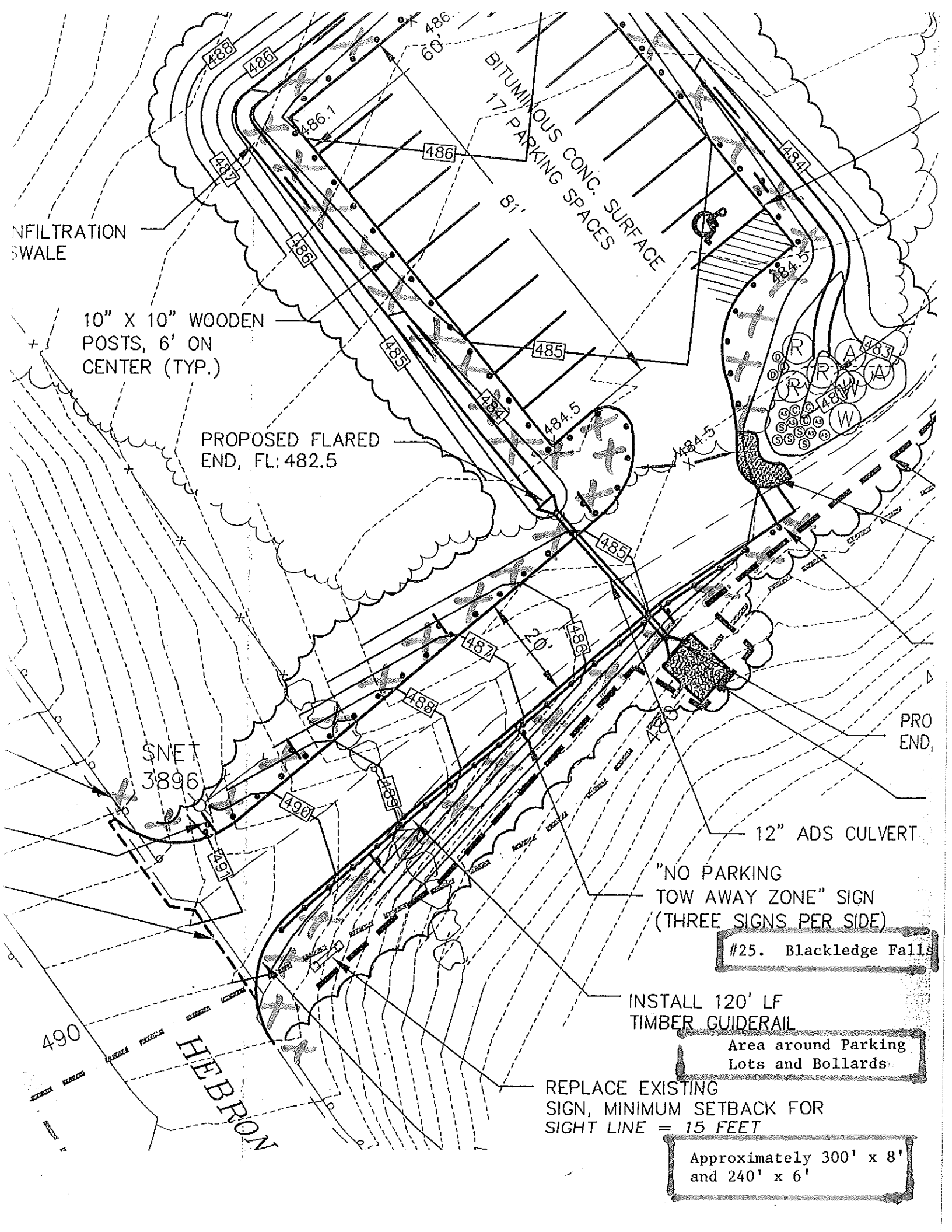


- 23. Feldspar Ridge
115' x 4' Snowshelf
115' x 4' Inside Walk



#24 210 GRISWOLD STREET

Vacant Lot (house in photo has been demolished)
Approximately 1/4 - 1/2 acre
Corner of House Street @ Griswold Street



INFILTRATION SWALE

10" X 10" WOODEN POSTS, 6' ON CENTER (TYP.)

PROPOSED FLARED END, FL: 482.5

BITUMINOUS CONC. SURFACE
17 PARKING SPACES
8'

\$ NET 3896

12" ADS CULVERT

"NO PARKING TOW AWAY ZONE" SIGN (THREE SIGNS PER SIDE)

#25. Blackledge Falls

INSTALL 120' LF TIMBER GUIDERAIL

Area around Parking Lots and Bollards

REPLACE EXISTING SIGN, MINIMUM SETBACK FOR SIGHT LINE = 15 FEET

Approximately 300' x 8' and 240' x 6'

HEBRON

490

486

488

486

486.1

486

486

485

485

484

484.5

484.5

485

486

487

488

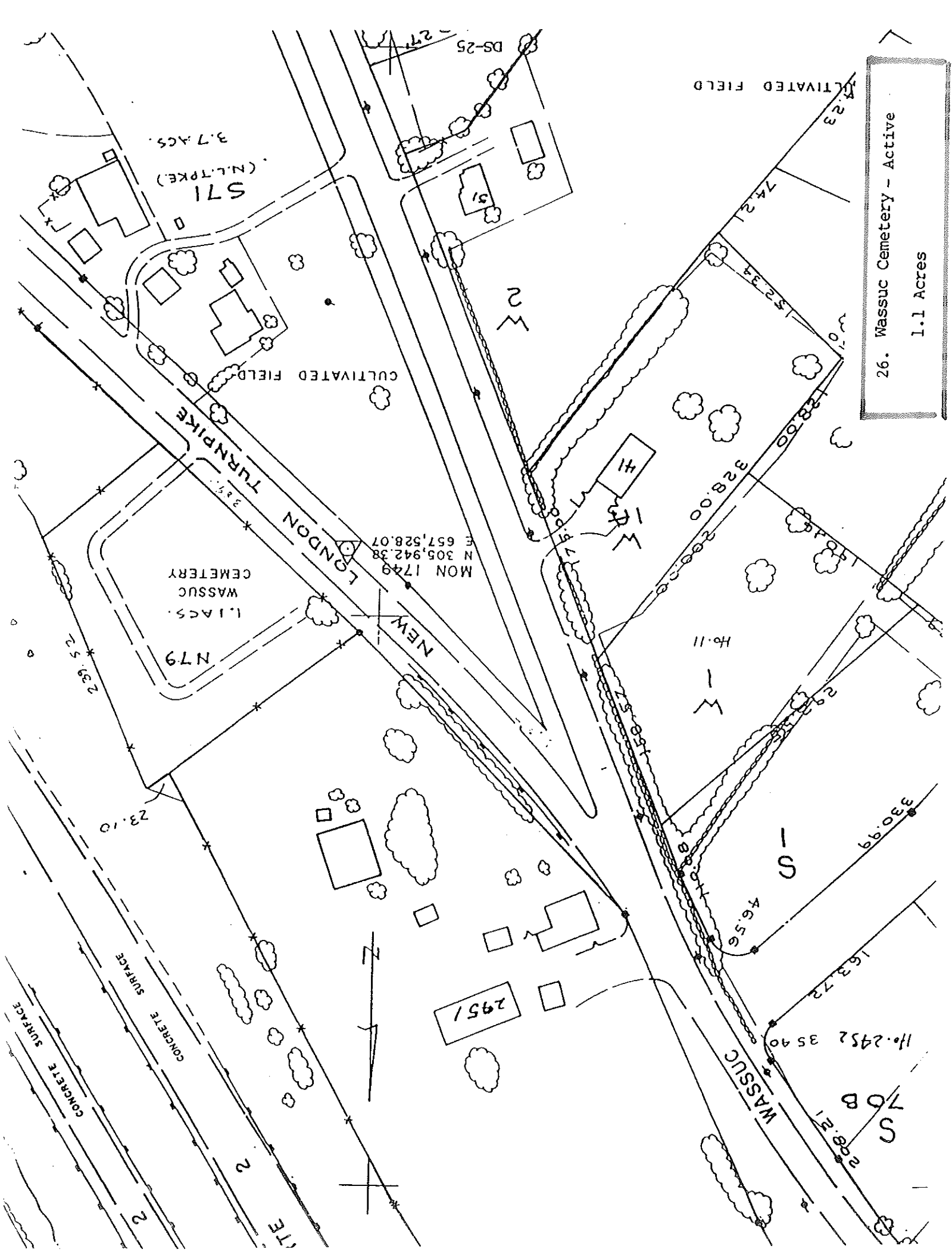
488

490

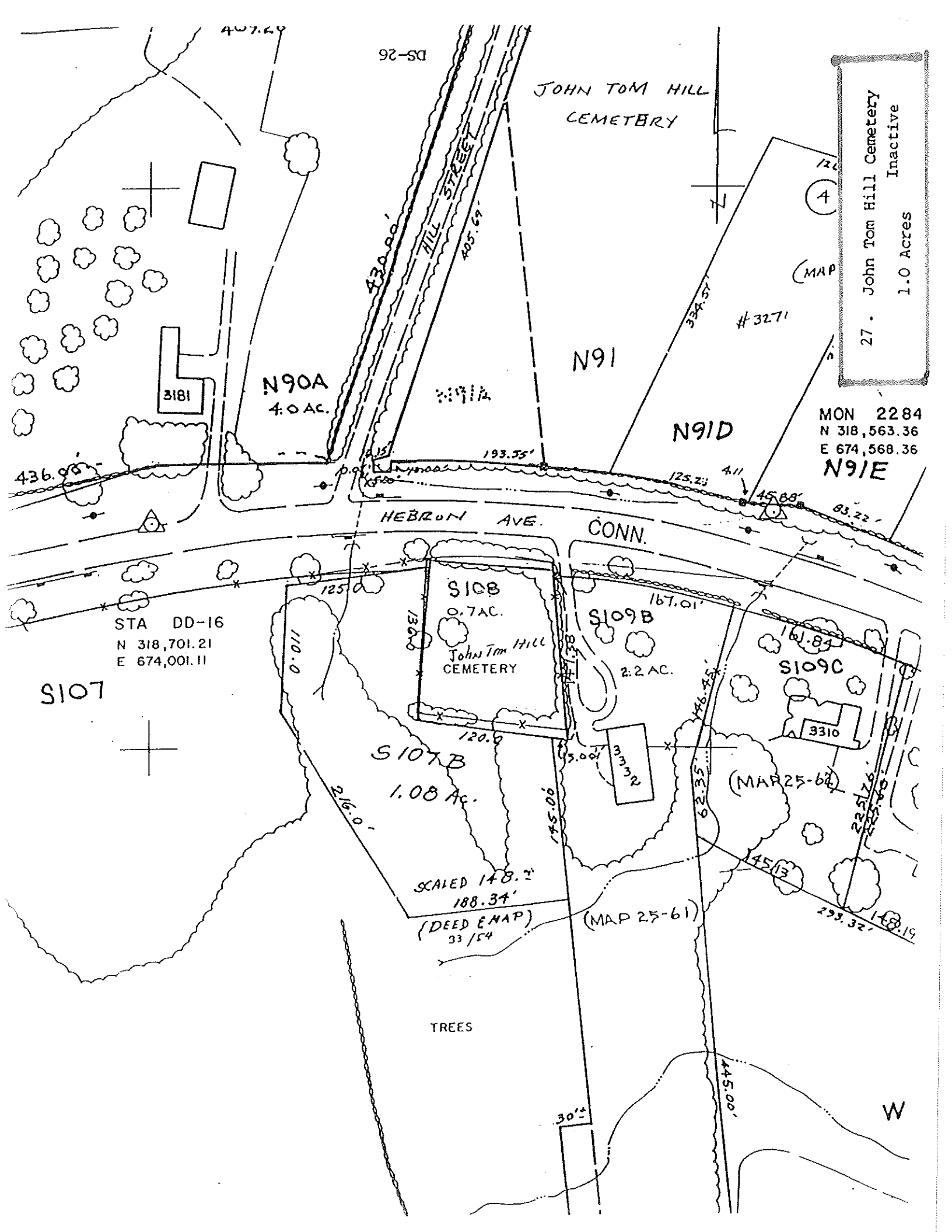
489

PRO END

R
A
R
A
W
W
S
S
S
S



26. Massuc Cemetery - Active
1.1 Acres



DS-26

JOHN TOM HILL
CEMETERY

27. John Tom Hill Cemetery
Inactive
1.0 Acres

3181

N90A
4.0 AC.

N91

N91D

MON 2284
N 318,563.36
E 674,568.36
N91E

436.95

HEBRON AVE.
CONN.

STA DD-16
N 318,701.21
E 674,001.11

S107

S108
0.7 AC.
John Tom Hill
CEMETERY

S109B

2.2 AC.

S109C

S107B
1.08 AC.

3310

SCALED 148.2'
188.34'
(DEED MAP)
33/54

(MAP 25-61)

(MAP 25-62)

TREES

W

407.20

HILL STREET

#3271

(MAP 4)

125.23

4.11

45.88

63.22

125.0

110.0

120.6

167.01

161.84

216.0

75.00

426.25

62.35

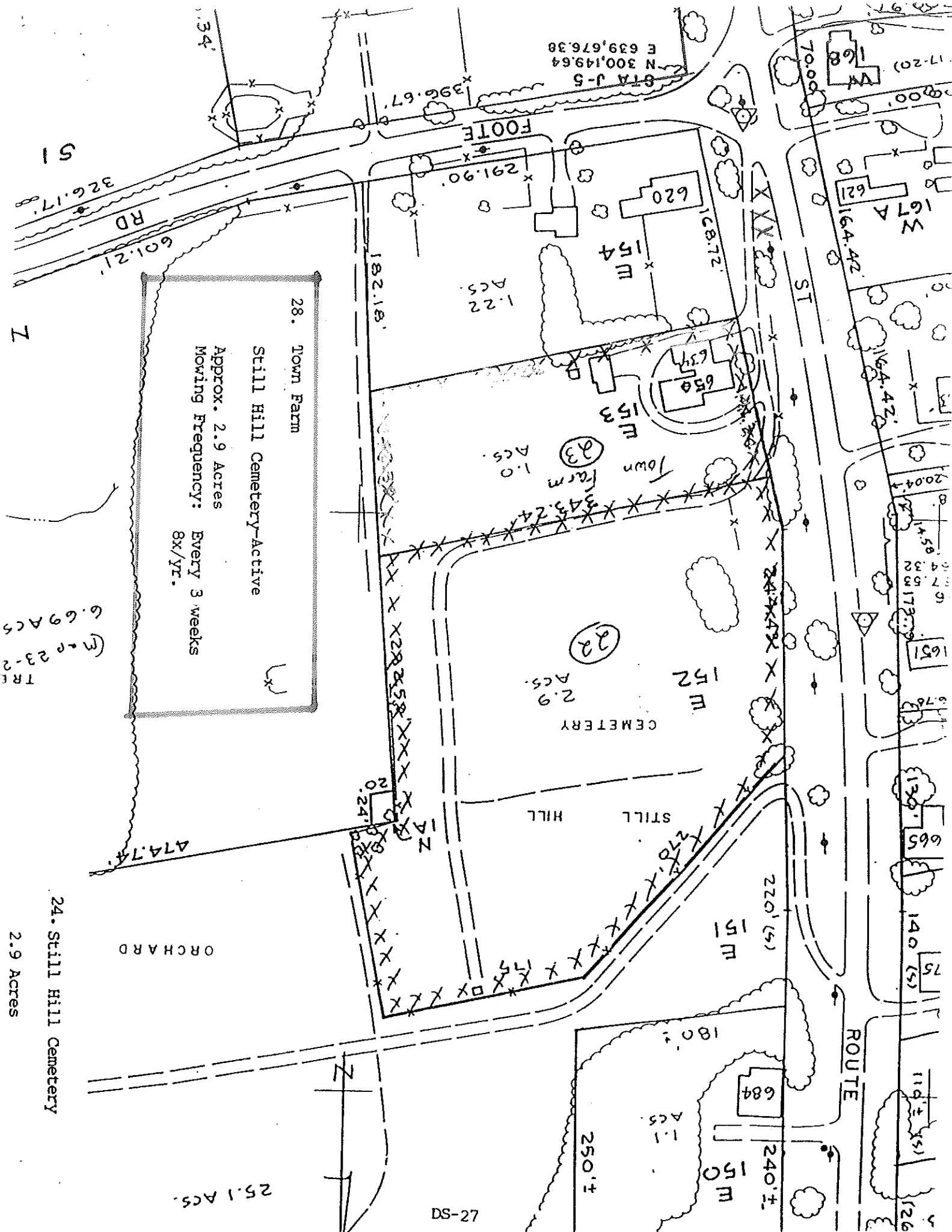
45.13

223.32

148.19

30.00

445.00



61A J-5
N 300.149.64
E 639.676.38

FOOTE

28. Town Farm
Still Hill Cemetery-Active
Approx. 2.9 Acres
Mowing Frequency: Every 3 weeks
8x/yr.

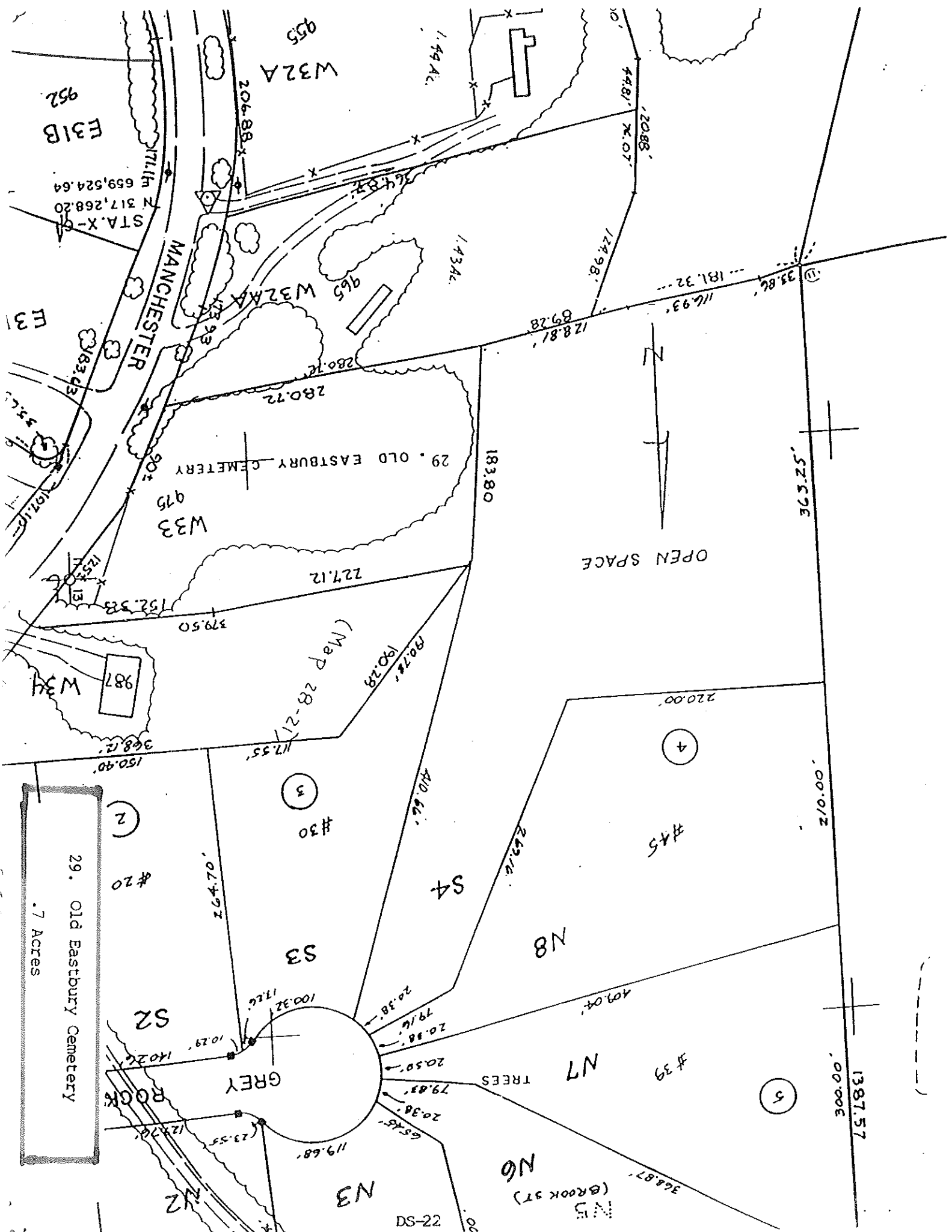
6.69 ACS
TR 23-2
TR 23-2

24. Still Hill Cemetery
2.9 Acres

ORCHARD

CEMETERY

STILL HILL



E31B
952

STA. X-X-9
N 317,268.20
659,524.64

MANCHESTER

29. OLD EASTBURY CEMETERY

OPEN SPACE

29. Old Eastbury Cemetery
.7 ACRES

#20

#30

#45

#39

GREY

TREES

N5 (BROOK ST)

ROCK

22-SD

N3

N7

N8

S4

S3

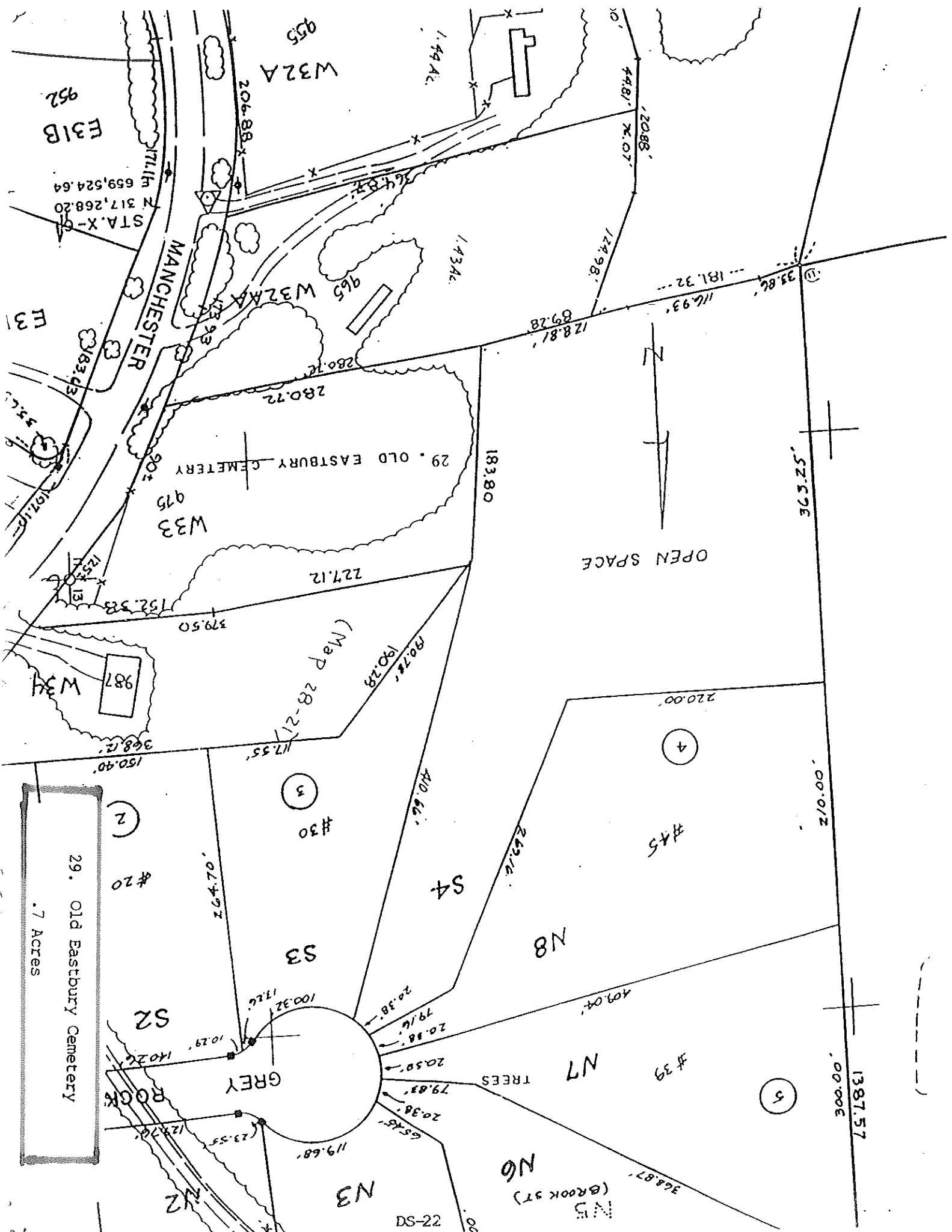
S2

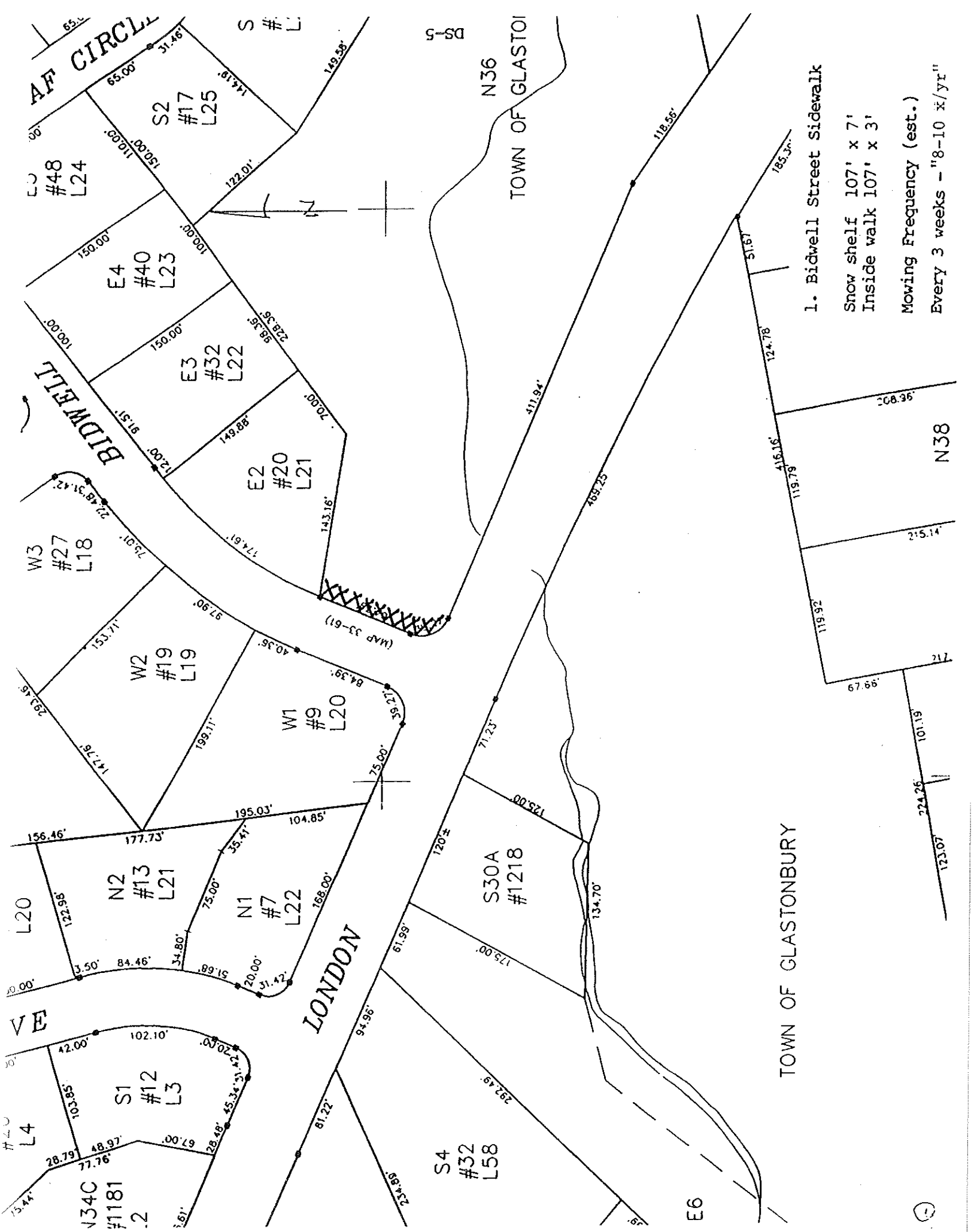
525.96

1387.57

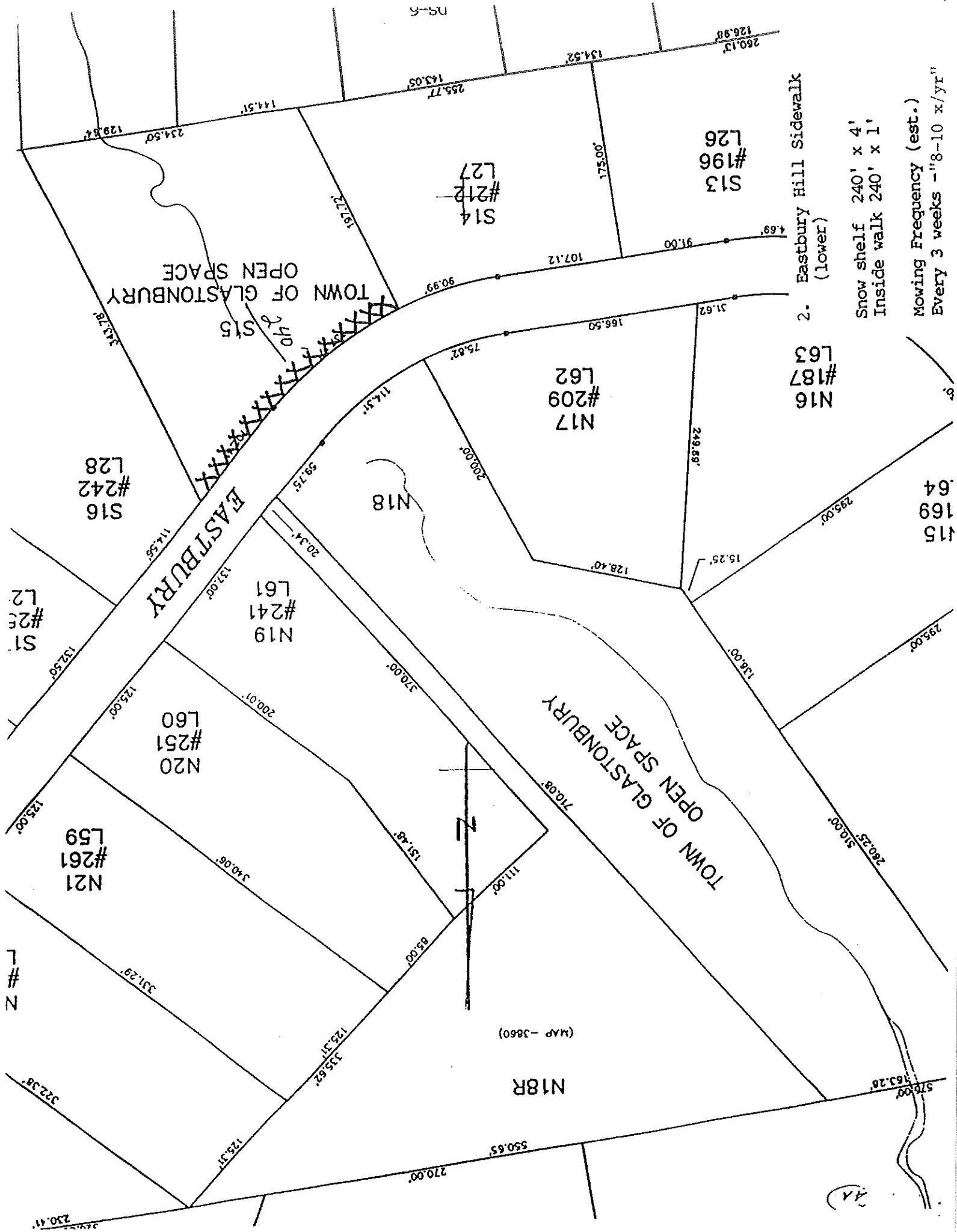


(Map 28-27)





- 1. Bidwell Street Sidewalk
- Snow shelf 107' x 7'
- Inside walk 107' x 3'
- Mowing Frequency (est.)
- Every 3 weeks - "8-10 x/yr"



2. Eastbury Hill Sidewalk (lower)

Snow shelf 240' x 4'
Inside walk 240' x 1'

Mowing Frequency (est.)
Every 3 weeks - "8-10 x/yr"

(MAP - 3860)

4A

E 662,000

E 662,500

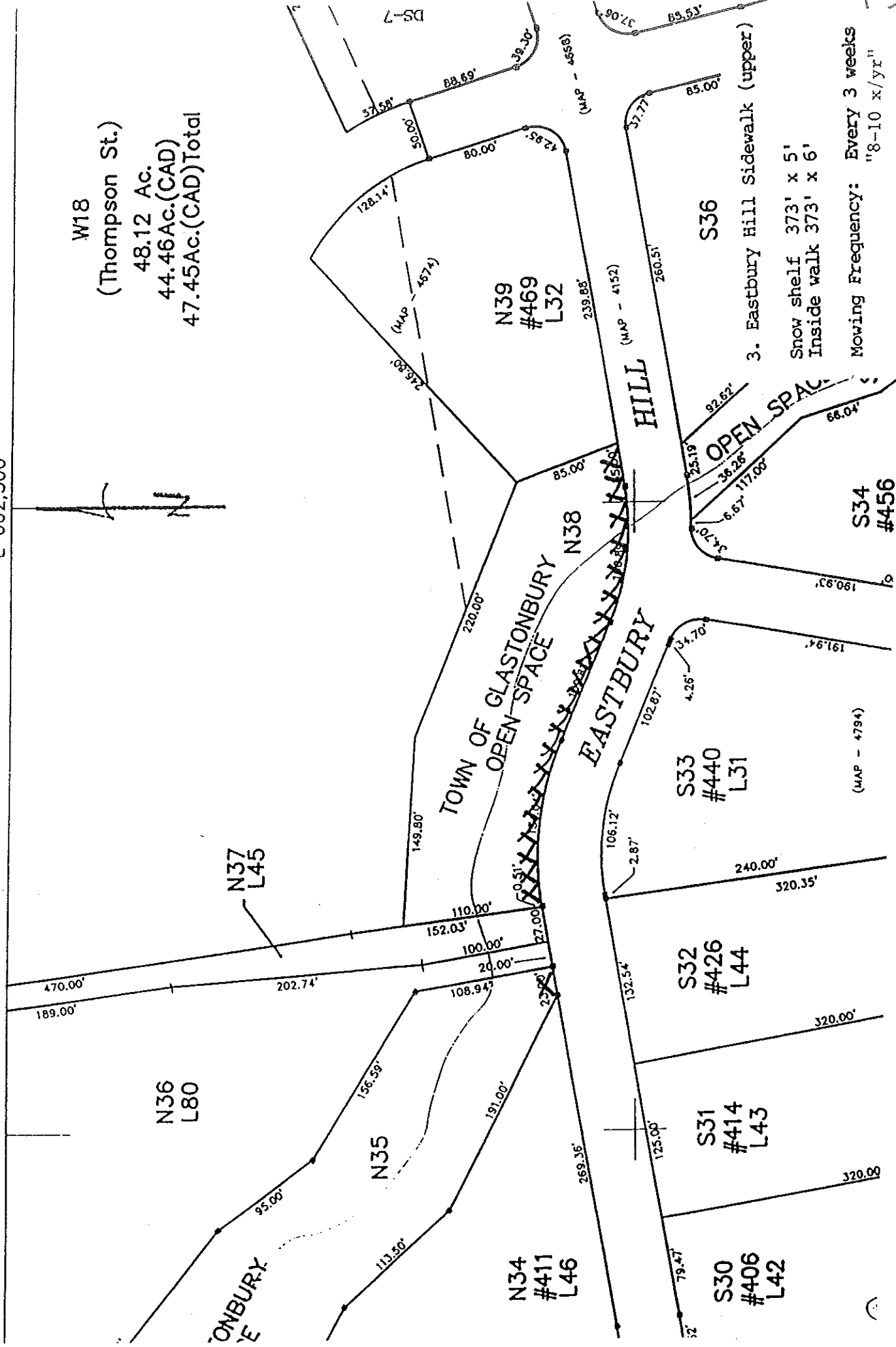
W18

(Thompson St.)

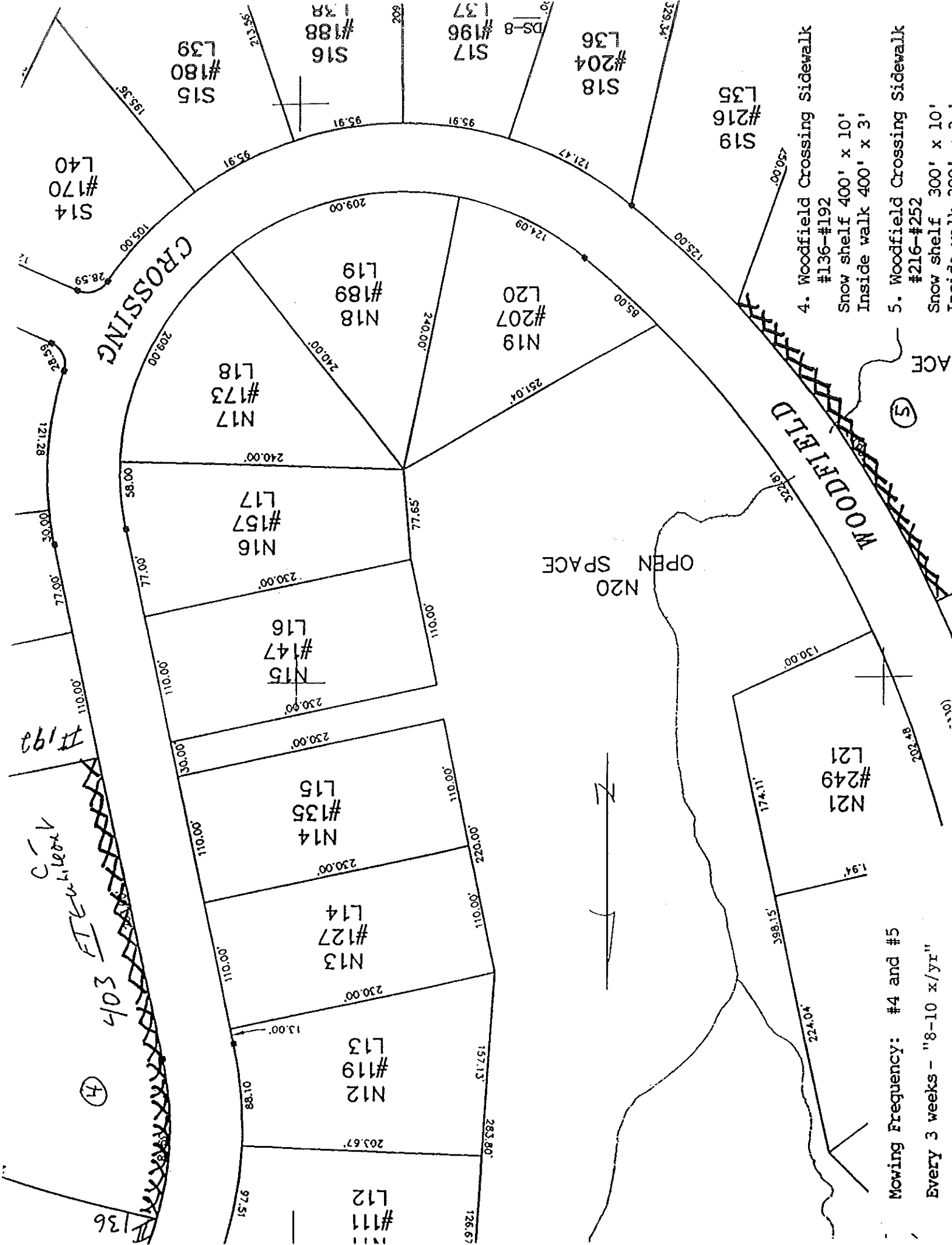
48.12 AC.

44.46Ac.(CAD)

47.45Ac.(CAD)Total



3. Eastbury Hill Sidewalk (upper)
 Snow shelf 373' x 5'
 Inside walk 373' x 6'
 Mowing Frequency: Every 3 weeks
 "8-10 x/yr"



4. Woodfield Crossing sidewalk #136-#192
Snow shelf 400' x 10'
Inside walk 400' x 3'
5. Woodfield Crossing Sidewalk #216-#252
Snow shelf 300' x 10'
Inside walk 300' x 3'

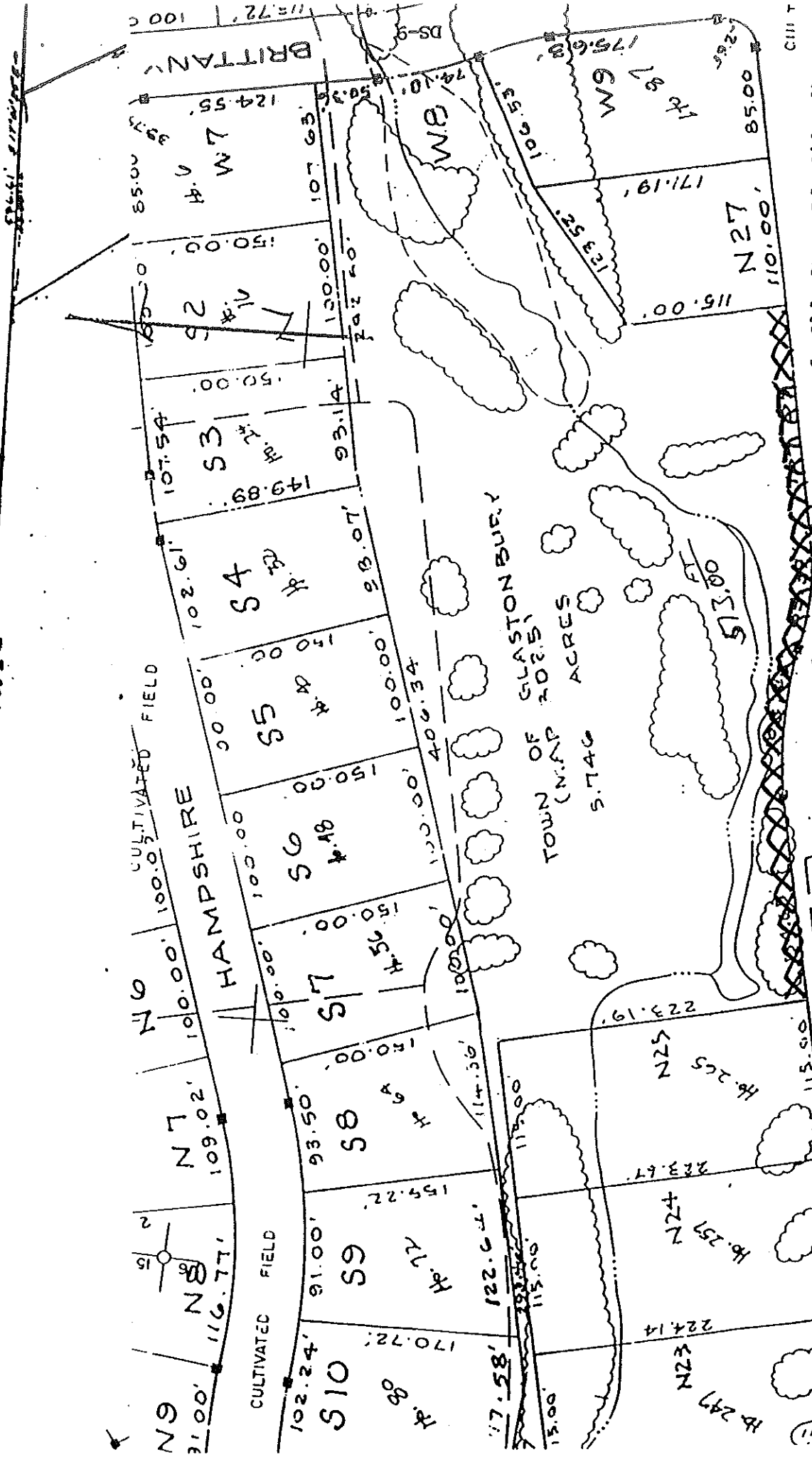
Mowing Frequency: #4 and #5
Every 3 weeks - "8-10 x/yr"

NEW BRUNSWICK COUNTY

N/F FELIX E. AND LORETTA A. PEHR

N/F EDWARD J. DELANEY

-N/F NADIA HASZYCIAK MASLOCKA



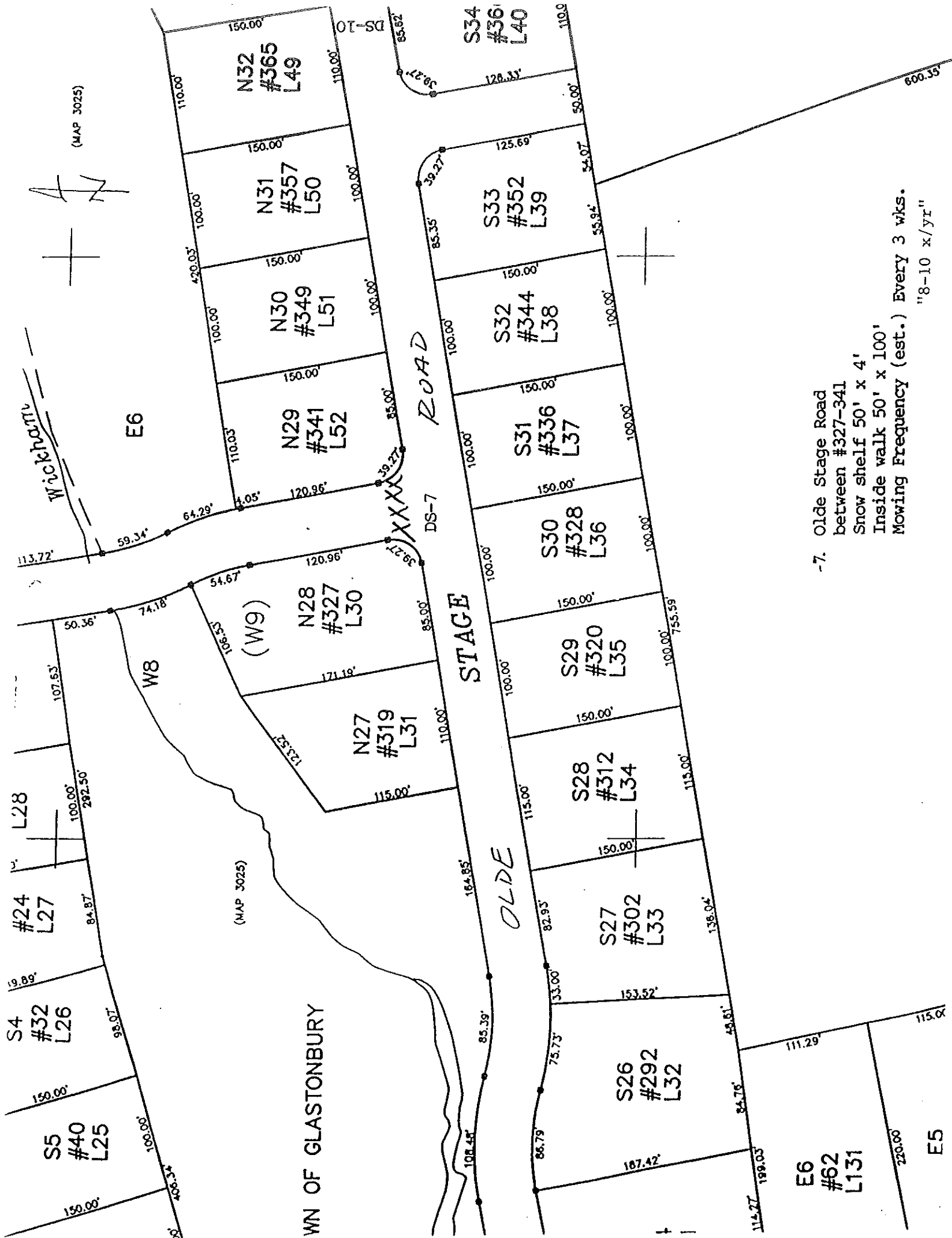
6. Olde Stage Rd. Sidewalk
 #265-319
 Snow shelf 515' x 5'
 Inside walk 515' x 1'-10" (varies)
 Mowing Frequency: Every 3 weeks
 "8-10 x/yr"

CUT

RD

OLDE STAGE (MAP 11-828)

CUT



-7. Olde Stage Road
 between #327-341
 Snow shelf 50' x 4'
 Inside walk 50' x 100'
 Mowing Frequency (est.) Every 3 wks.
 "8-10 x/yr"



W3
#95
L2

13.75 Ac.
13.75Ac.(CAD)

DS-11
(MAP - 5109)
(MAP - 5092)

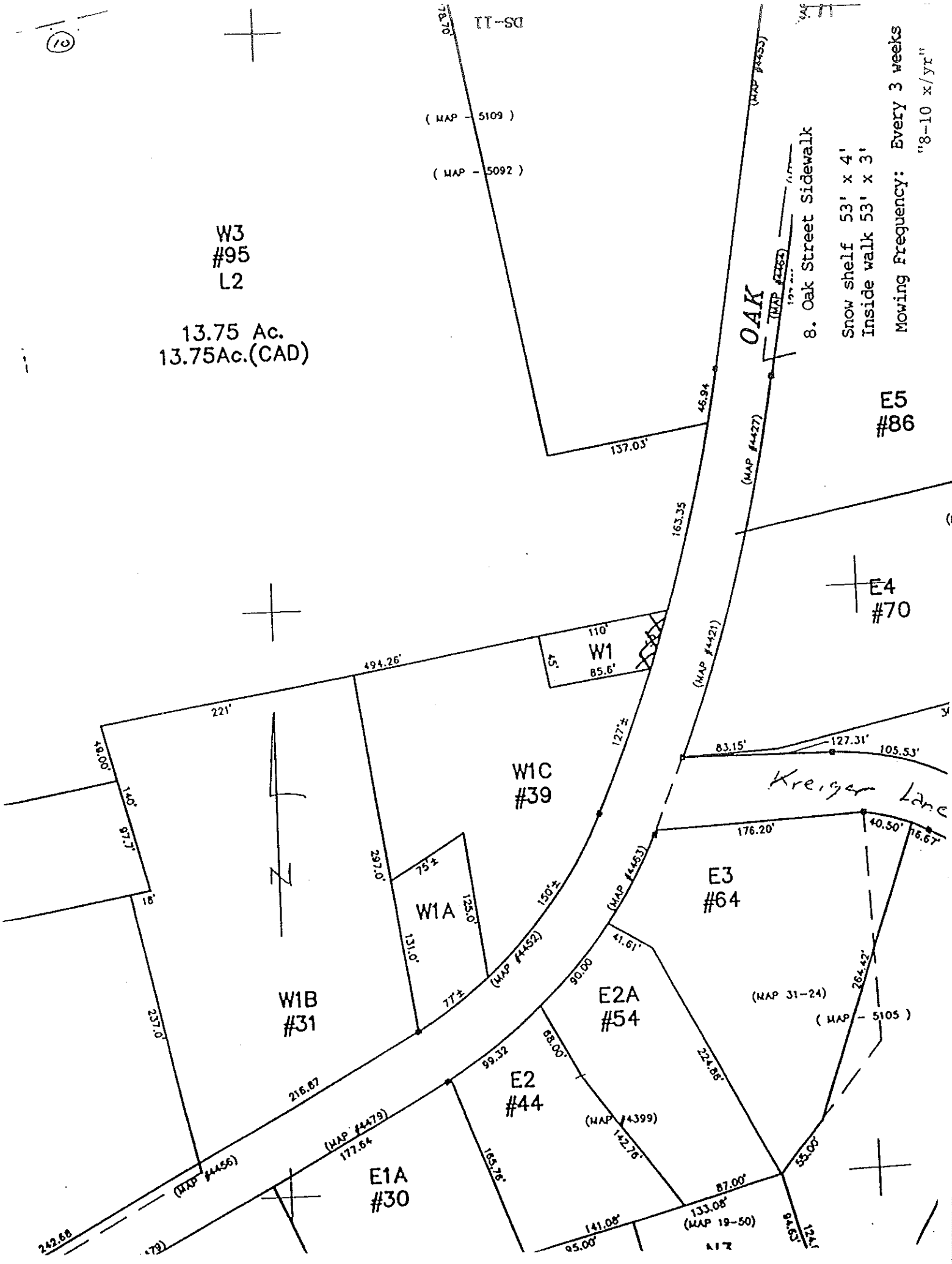
OAK
8. Oak Street Sidewalk

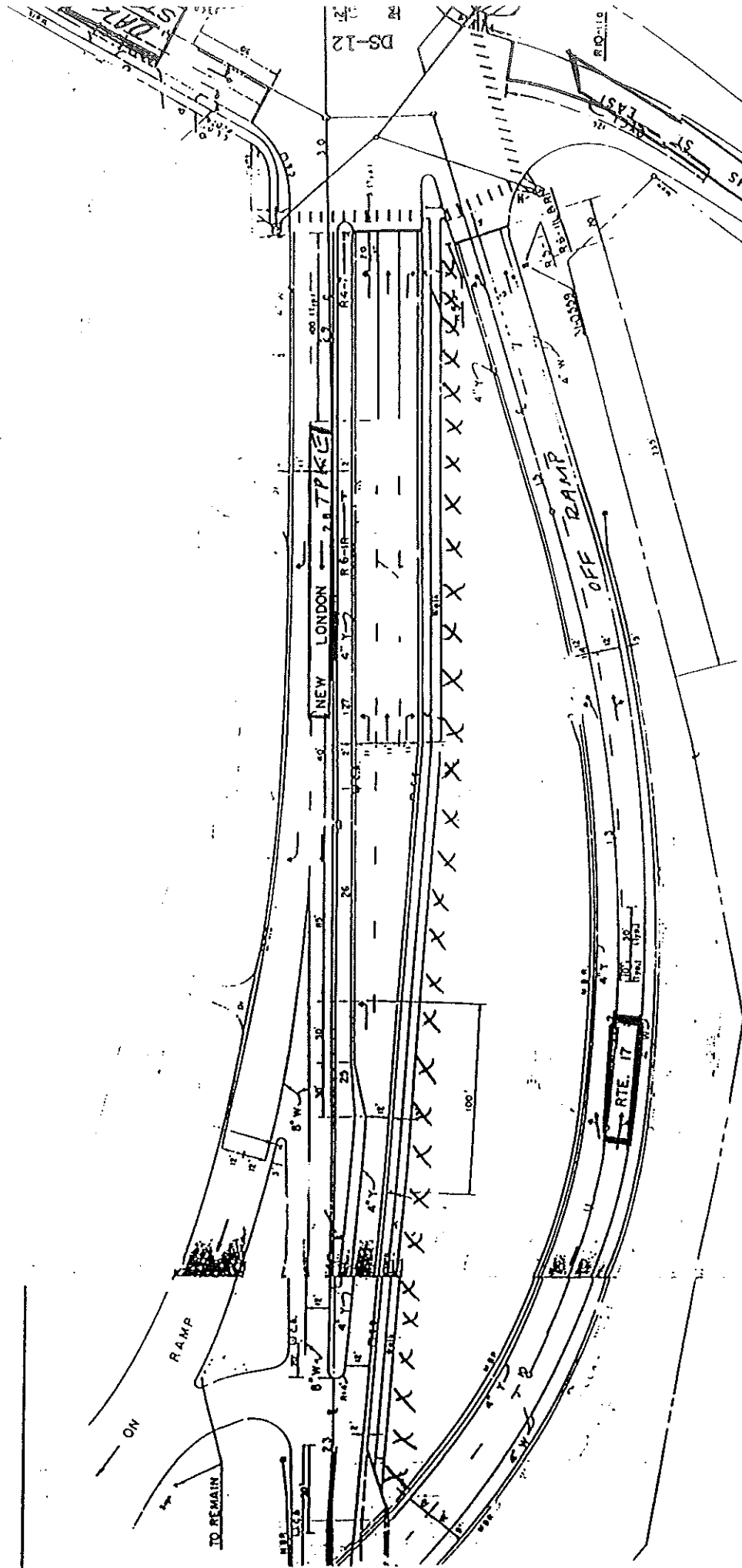
Snow shelf 53' x 4'
Inside walk 53' x 3'

Mowing Frequency: Every 3 weeks
"8-10 x/yr"

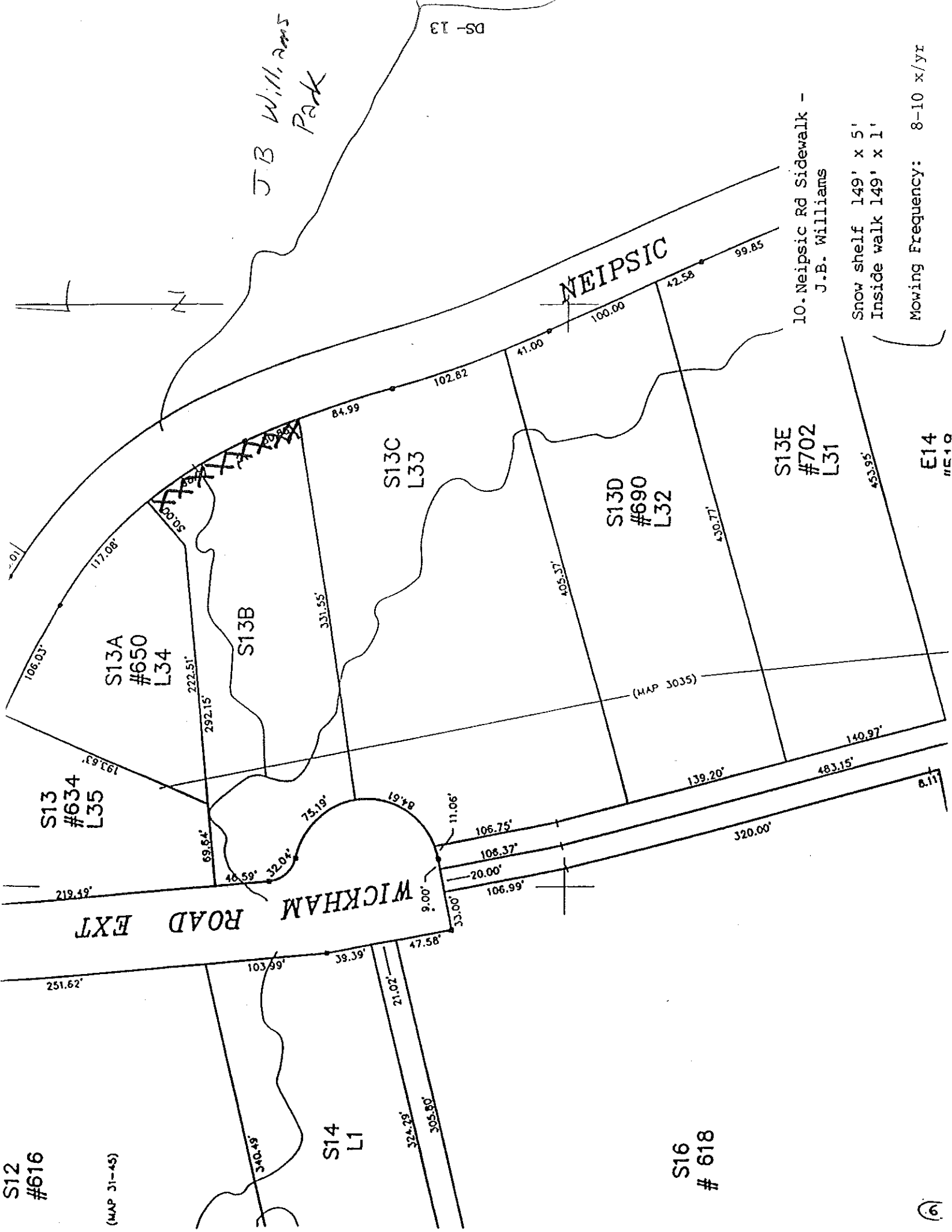
E5
#86

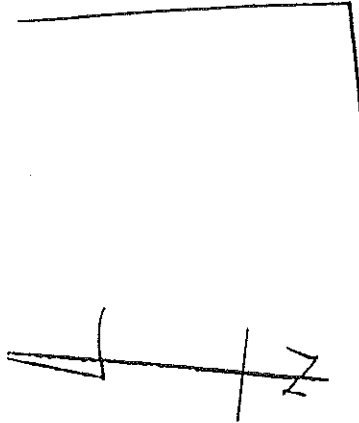
E4
#70





9. New London Turnpike from intersection of Rte. 17 ramp at Williams St. East and New London Turnpike to Rte. 17 underpass. Snow shelf 700' x 4'. Inside walk 700' x 3-8' (varies) Mowing Frequency: Every 3 wks. "8-10 x/yr"





N9
#163, #225



N9A
#151

WADSWORTH STREET

NEIPSIC

BIDWELL STREET

N10D
#233
L4

E12
#114

S7
#194
L43

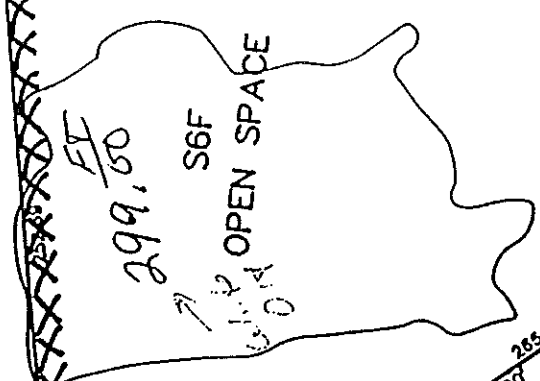
S7L
#204
L42

S7M
#216
L41

W12
#129
L40

W11
#117
L44

W10
#109
L45



S6D
#88
L60

N9
#78
L59

N8
#68
L58

S9
#77
L10

224.87'

168.13'

57.36'

110.00'

130.01'

130.01'

206.94'

238.57'

113.08'

209.61'

96.53'

150.00'

91.00'

93.59'

10.77'

91.90'

8.29'

123.73'

31.52'

150.00'

91.00'

93.59'

10.77'

91.90'

148.91'

285.25'

100.00'

153.00'

130.01'

130.01'

130.01'

130.01'

130.01'

130.01'

130.01'

130.01'

130.01'

130.01'

130.01'

130.01'

130.01'

130.01'

130.01'

130.01'

E 646.500

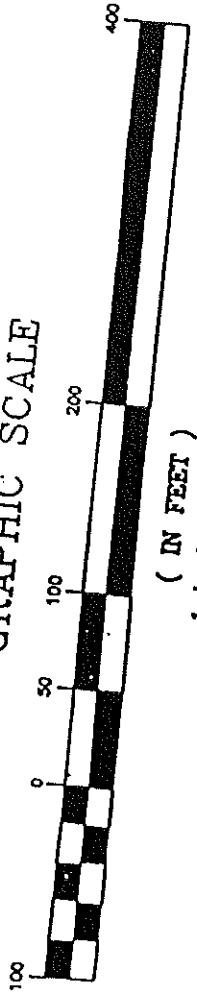
E 646.000

11. Neipsic Rd. Sidewalk-
Wadsworth

Snow shelf 253' x 6'
Inside walk 253' x 1'

Mowing Frequency: Every 3 weeks
"8-10 x/yr"

GRAPHIC SCALE

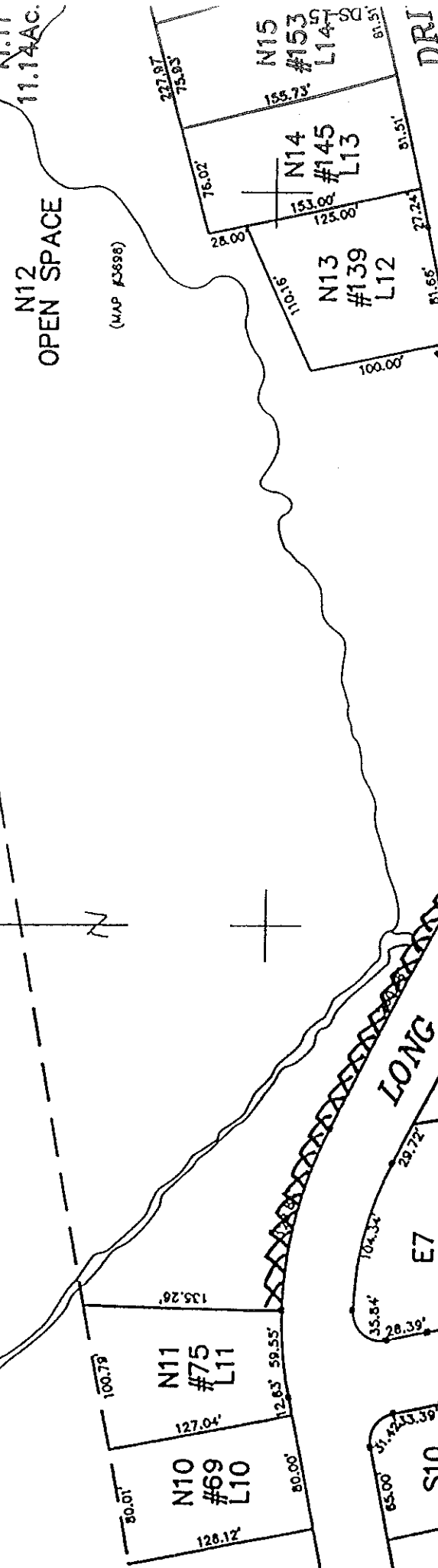


(IN FEET)
1 Inch = 100 ft



N11
11.14AC.
OPEN SPACE

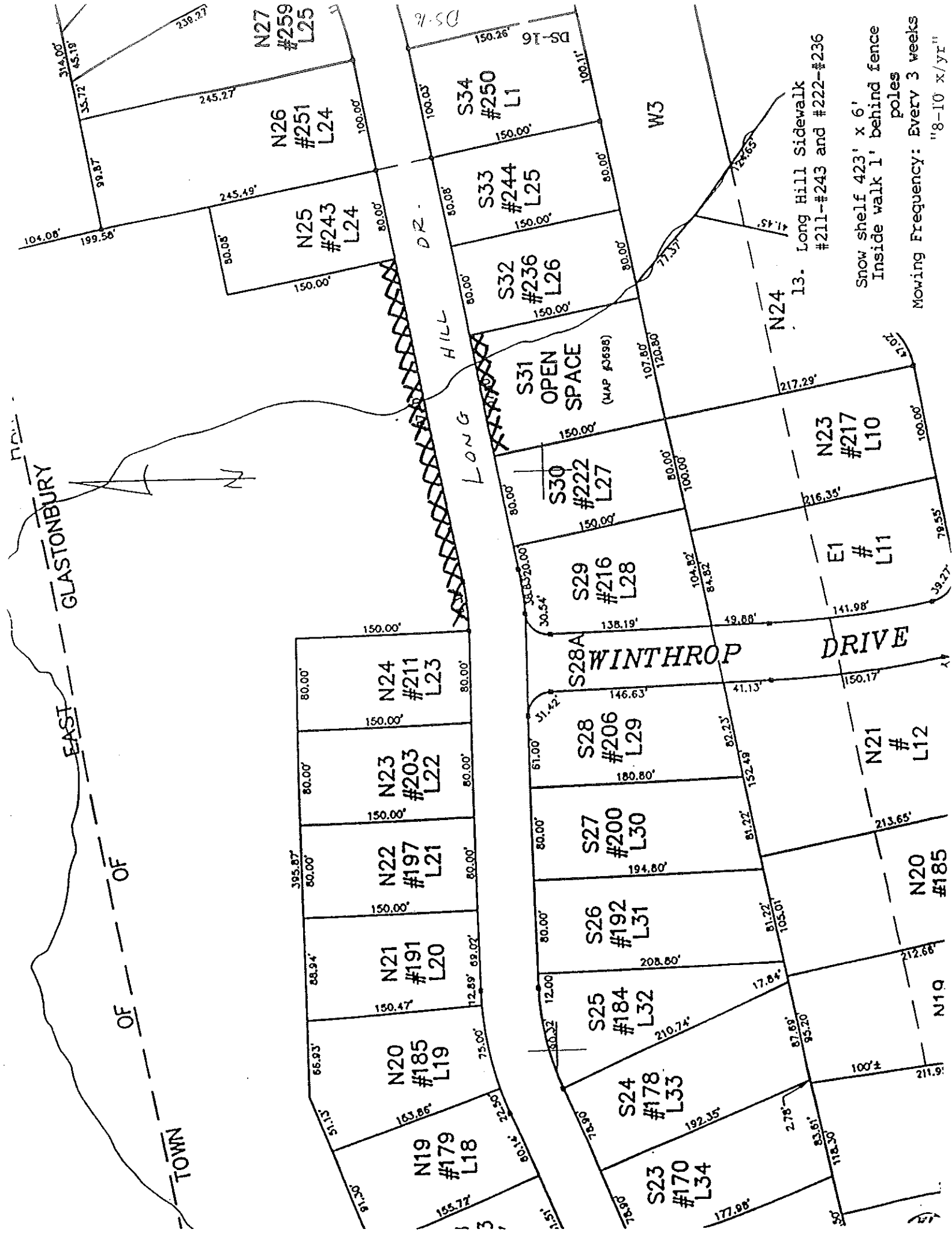
(MAP #3898)



12. Long Hill Sidewalk #75-#139
Snow shelf 693' x 6'
693 x 4'-6' (varies)
plus behind fence poles
Mowing Frequency: Every 3 weeks
"8-10 x/yr"

9
2
8

12



13. Long Hill Sidewalk
#211-#243 and #222-#236

Snow shelf 423' x 6'
Inside walk 1' behind fence
poles
Mowing Frequency: Every 3 weeks
"8-10 x/yr"

TOWN OF EAST GLASTONBURY

OF

TOWN

LONG HILL DRIVE

WINTHROP DRIVE

N27
#259
L25

N26
#251
L24

N25
#243
L24

N24
#211
L23

N23
#203
L22

N22
#197
L21

N21
#191
L20

N20
#185
L19

N19
#179
L18

S34
#250
L1

S33
#244
L25

S32
#236
L26

S31
OPEN SPACE
(MAP #4698)

S30
#222
L27

S29
#216
L28

S28A
#206
L29

S28
#200
L30

S27
#192
L31

S26
#184
L32

S25
#178
L33

S24
#170
L34

E1

L11

N23
#217
L10

N21

L12

N20
#185

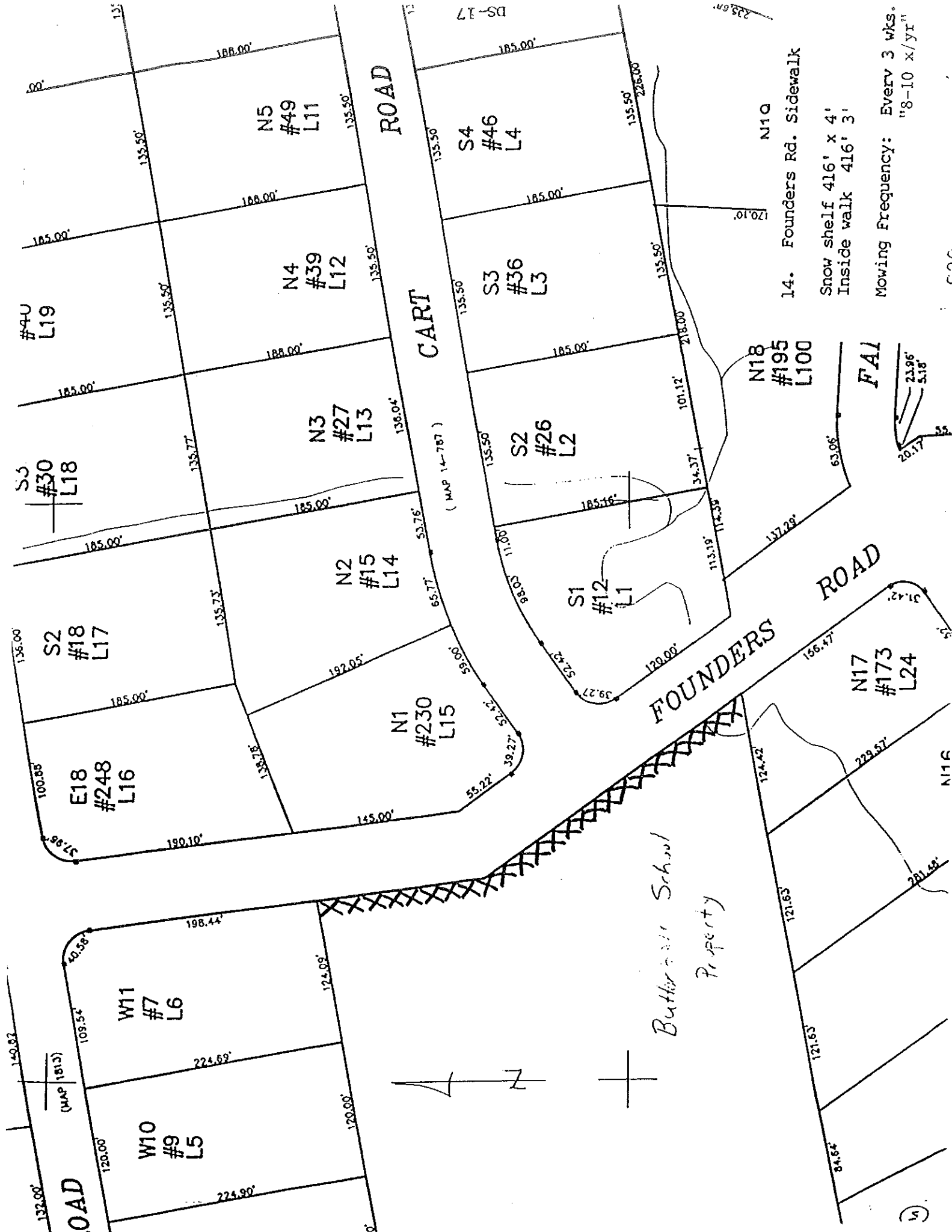
N19

W3

N24

N19

N20



S5
#30
L18

S2
#18
L17

E18
#248
L16

W11
#7
L6

W10
#9
L5

N2
#15
L14

N3
#27
L13

N4
#39
L12

N5
#49
L11

N1
#230
L15

S1
#12
L1

S2
#26
L2

S3
#36
L3

S4
#46
L4

N18
#195
L100

N17
#173
L24

N16

N10

14. Founders Rd. Sidewalk

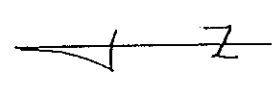
Snow shelf 416' x 4'
Inside walk 416' 3'

Mowing Frequency: Every 3 wks.
"8-10 x/yr"

FAI



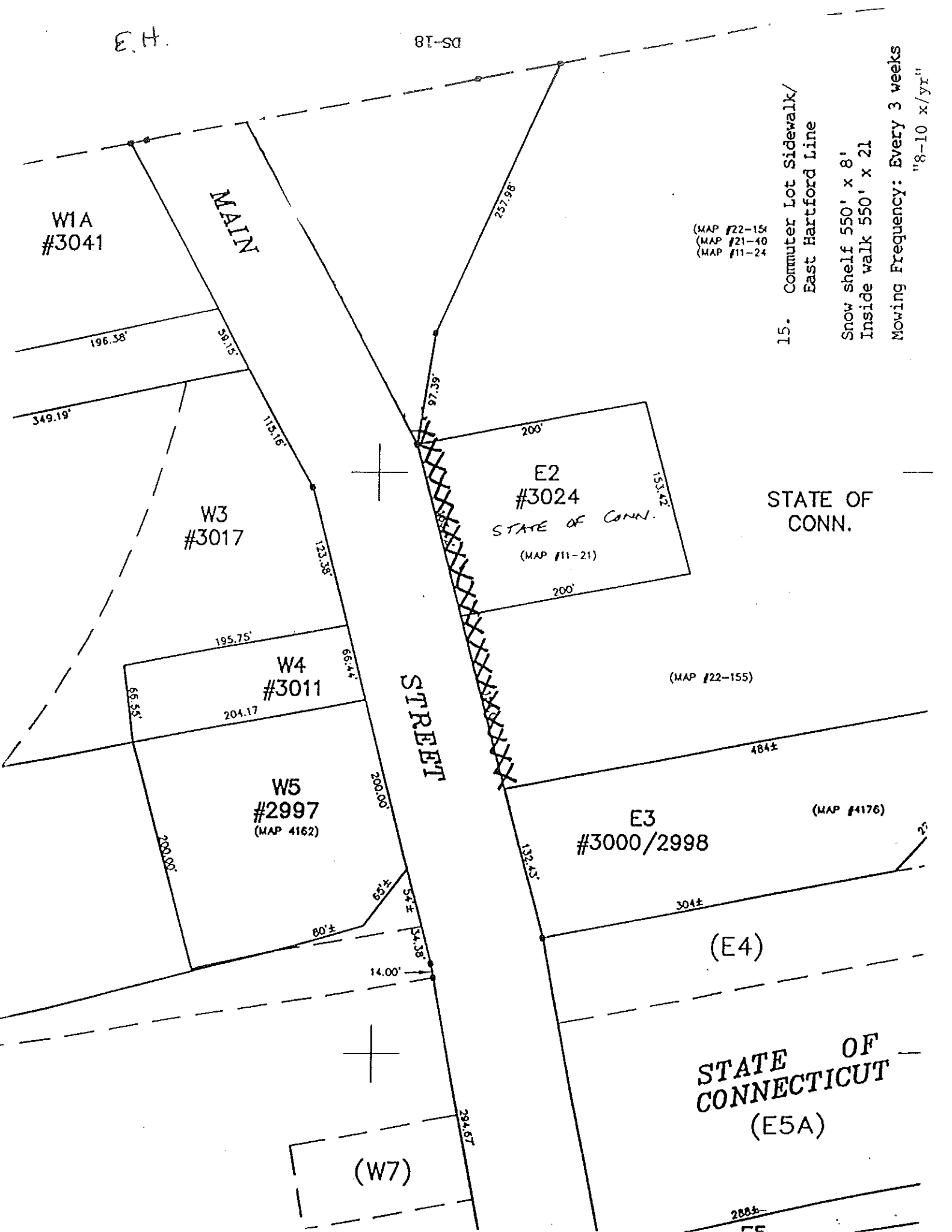
Butler School
Property



(4)

E.H.

DS-18



W1A
#3041

MAIN

W3
#3017

W4
#3011

W5
#2997
(MAP 4162)

(W7)

E2
#3024
STATE OF CONN.
(MAP #11-21)

E3
#3000/2998
(MAP #1176)

STATE OF CONNECTICUT
(E5A)

STATE OF CONN.

(MAP #22-15)
(MAP #21-40)
(MAP #11-24)

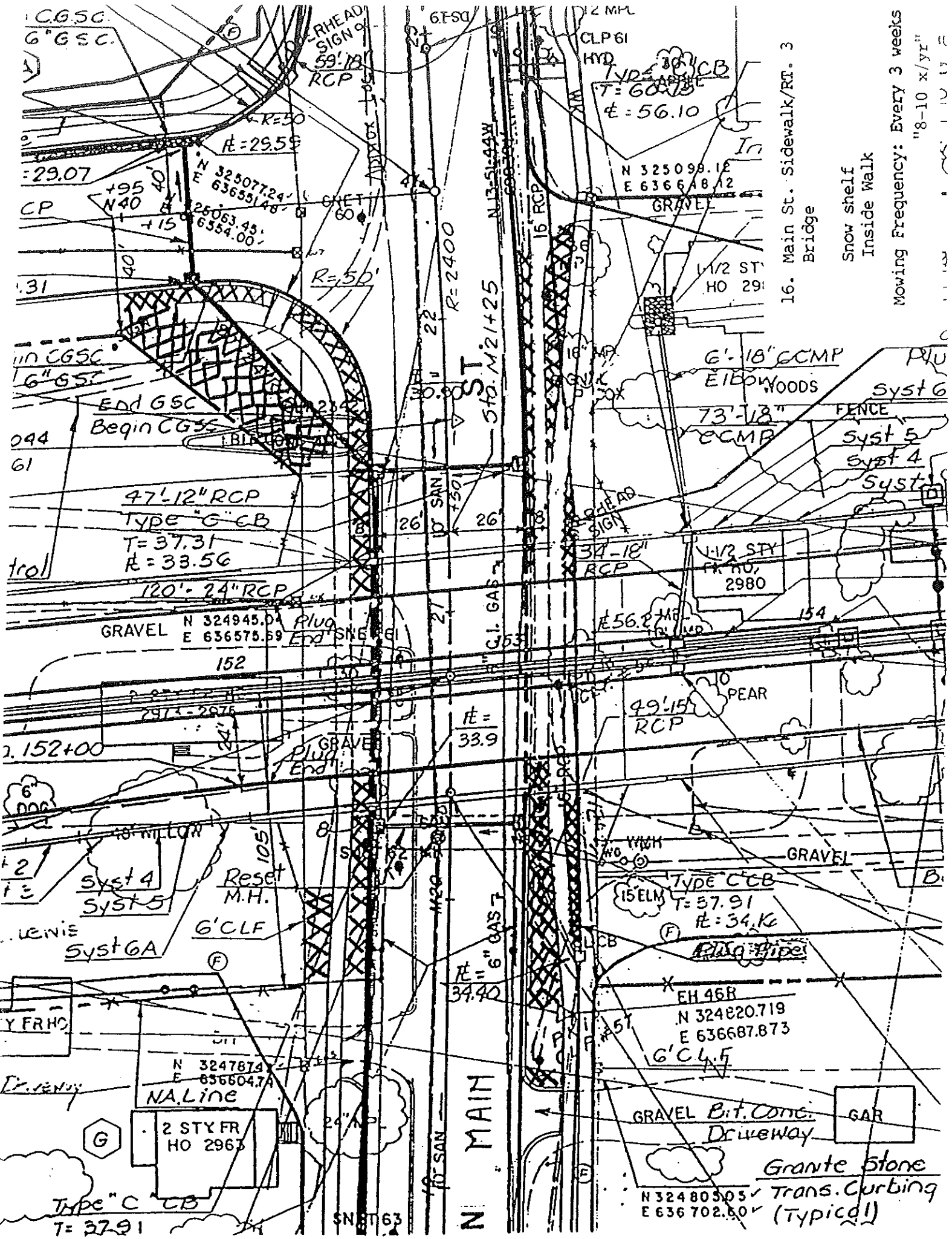
(MAP #22-155)

15. Commuter Lot Sidewalk/
East Hartford Line

Snow shelf 550' x 8'
Inside walk 550' x 21'

Mowing Frequency: Every 3 weeks
"8-10 x/yr"

288±



16. Main St. Sidewalk/RT. 3
Bridge
Snow shelf
Inside Walk
Mowing Frequency: Every 3 weeks
"8-10 x/yr"

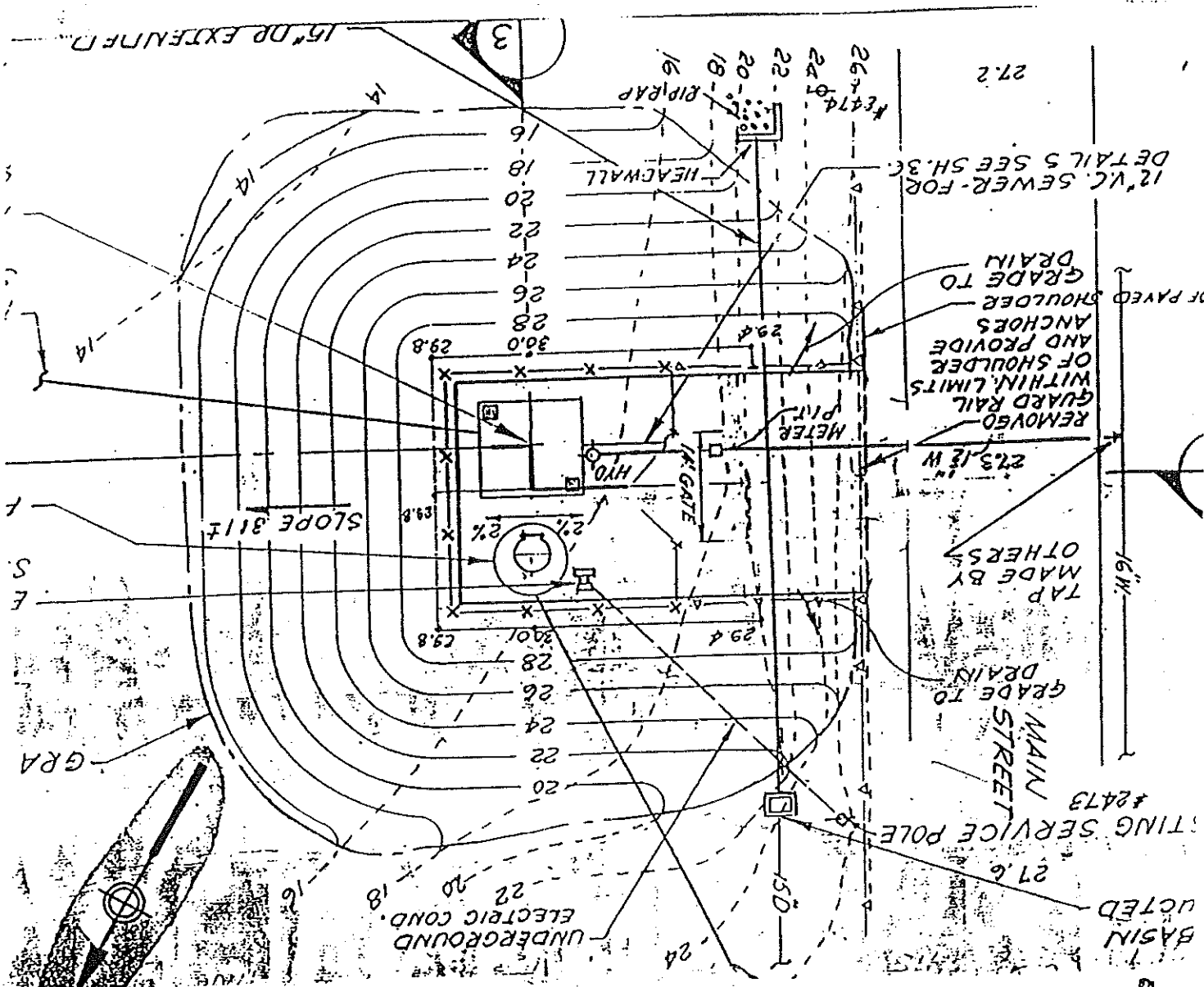
CG5C
6" GSC
RCP
R=50'
R=2400
CP
N 325077.24
E 636551.48
N 325099.18
E 636648.12
GRAVEL
1/2 ST HO 291
1/2 ST HO 290

47'-12" RCP
TYPE "G" CB
T=37.31
R=33.56
120'-24" RCP
GRAVEL
N 324945.04
E 636575.59
PLUG
END SNE
152
2974-2976
2. 152+00
GRAVEL
PLUG
END

152
2974-2976
2. 152+00
GRAVEL
PLUG
END
Syst 4
Syst 5
Syst 6A
Reset M.H.
6" CLF
N 324787.4
E 636604.7
NA Line
2 STY FR
HO 2963
TYPE "C" CB
T=37.91

TYPE "C" CB
T=37.91
N 324805.05
E 636702.60
GRAVEL Bit. Conc.
Driveway
GAR
Grante Stone
Trans. Curbing
(Typical)

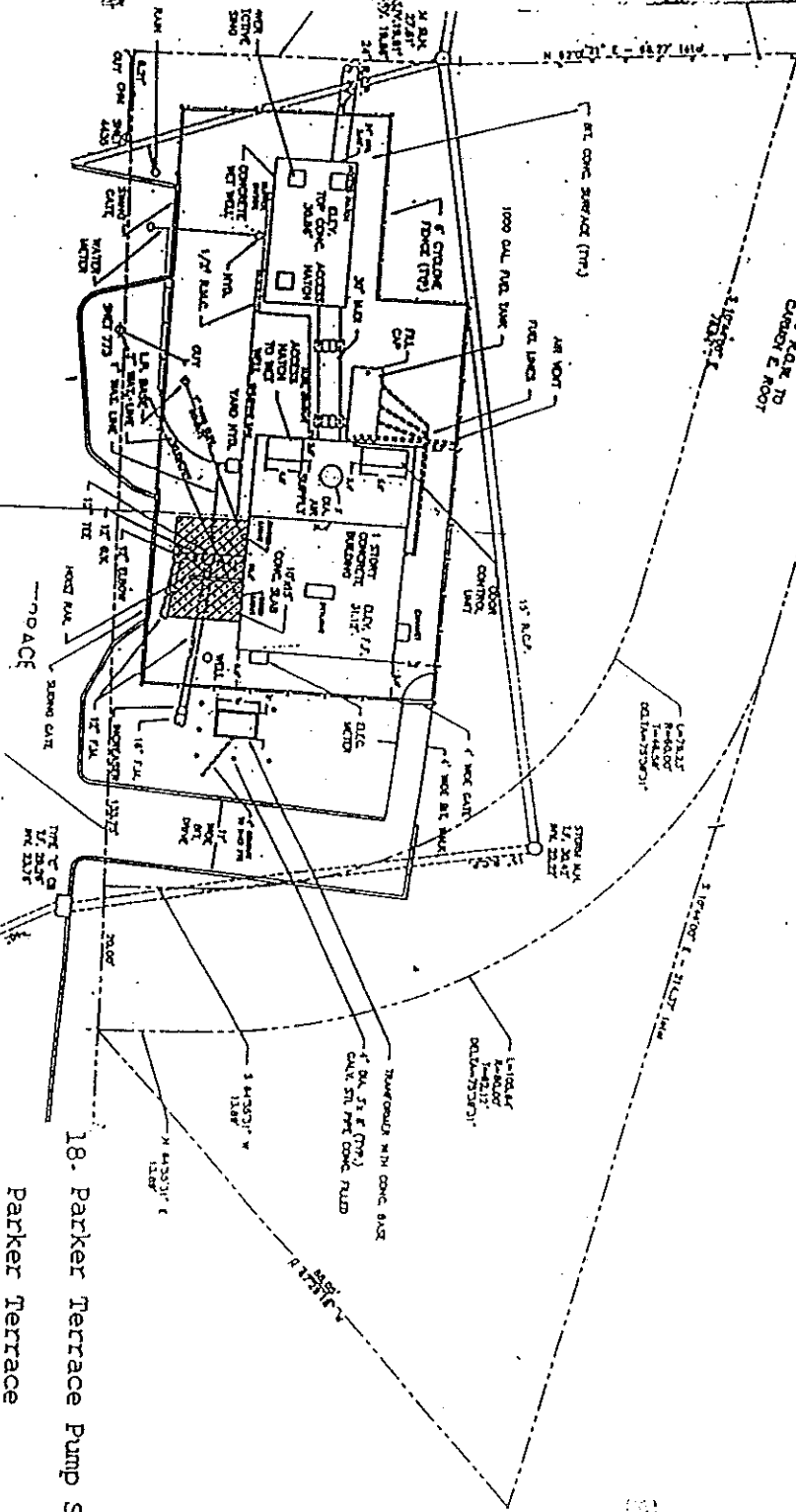
6" FSD
2 MPH
CLP 61
HYD
TYPE "C" CB
T=60.75
R=56.10
N 325099.18
E 636648.12
GRAVEL
1/2 ST HO 291
1/2 ST HO 290
6'-18" GCMF
EILWOODS
73'-18" GCMF
Syst 6
FENCE
Syst 5
Syst 4
Syst 3
HEAD SIGN
34'-18" RCP
1/2 STY FR HO, 2980
R=56.2
154
49'-15" RCP
PEAR
GRAVEL
TYPE "C" CB
T=37.91
R=34.46
PLUG TYPE
EH 46R
N 324820.719
E 636687.873
6" CLF
GRAVEL Bit. Conc.
Driveway
GAR
Grante Stone
Trans. Curbing
(Typical)



17. Smith Brook Pump Station

Main Street

Mowing frequency: Every 3 weeks
"8-10 x/yr"

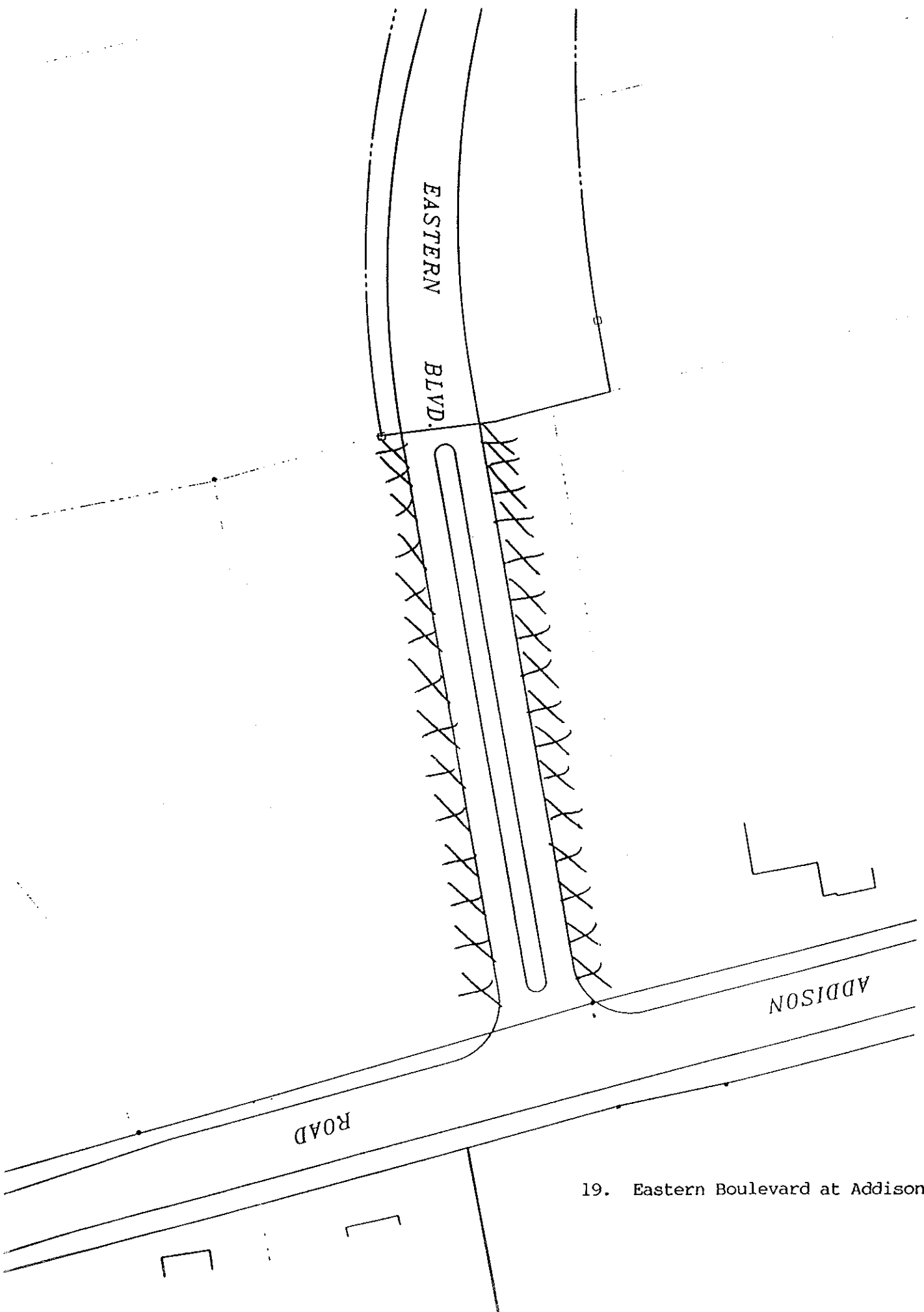


18. Parker Terrace Pump Station

Parker Terrace

Every 3 weeks

"8-10 x/yr"



EASTERN
BLVD.

ROAD

ADDISON

19. Eastern Boulevard at Addison Road



20. Great Pond Nature Preserve

Sign

POTTER POND

BARBONET ROAD

(17)

UNKNOWN

HUBBARD ST

NEW LONDON TR

MAK

BRUNN



HAMPSHIRE DR

128

96

OLDE STAGE RD

WAGON RD

CUTTER LN

SURREY LN

FOUNDERS RD

CARRIAGE DR

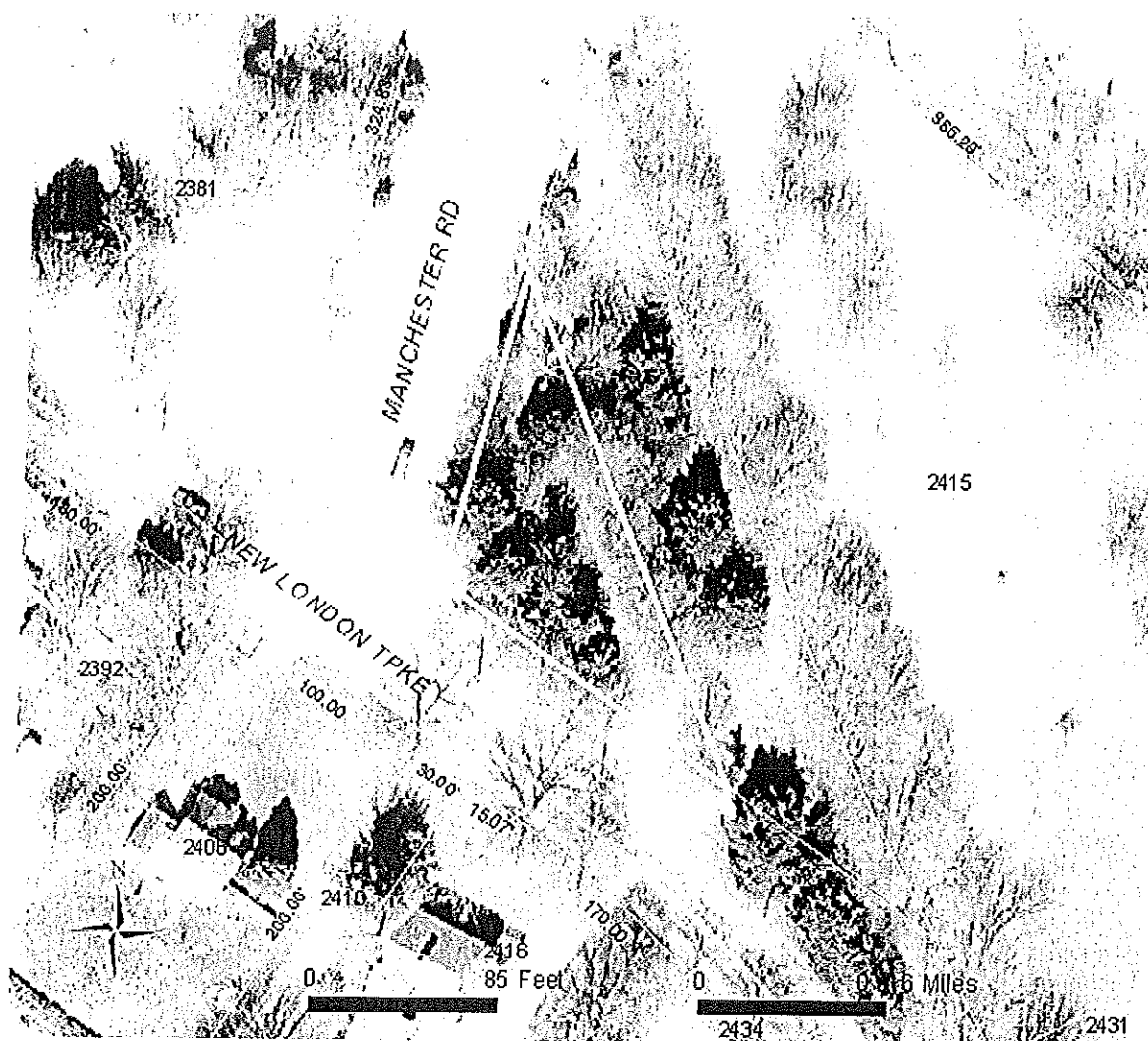
ROBIN RD N 365ft

21. Hampshire Dr. Open Space

#103-131 200'x4' Snowshelf
200'x4' Inside Sidewalk

#96-128 300'x4' Snowshelf
300'x4' Inside Sidewalk

Mowing Frequency (est.) Every 3 weeks
8x/yr.



#22 WASSUC GREEN AT NEW LONDON TURNPIKE AND MANCHESTER ROAD (Route 83)