

**EAST HARTFORD-GLASTONBURY
ELEMENTARY MAGNET SCHOOL PHASE 2
GLASTONBURY, CONNECTICUT
STATE PROJECT NOS. 054-0095 MAG/N/PS & 054-0096 MAG/N/PS
GLASTONBURY BID NO. GL-2011-04**

The following changes to the Drawings and Project Manual shall become a part of the Contract Documents superseding previously issued Drawings and Specifications to the extent modified by this Addendum No. 6. Bidders shall ensure this addendum is acknowledged in the appropriate space provided on the Bid Form when submitting their bid.

NOTICE TO ALL PLAN HOLDERS:

If you received this Addendum No. 6 electronically you may not change it in any way except to format it to print on your printer.

CHANGES TO THE DRAWINGS

A. SURVEY – BOUNDARY MAP/EXISTING CONDITIONS PLAN:

- 1) In Set 1 of 2 of the Drawings, REMOVE the “Boundary Map/Existing Conditions Plan” and INSERT the revised “Boundary Map/Existing Conditions Plan” (copy attached) dated 2-22-11.

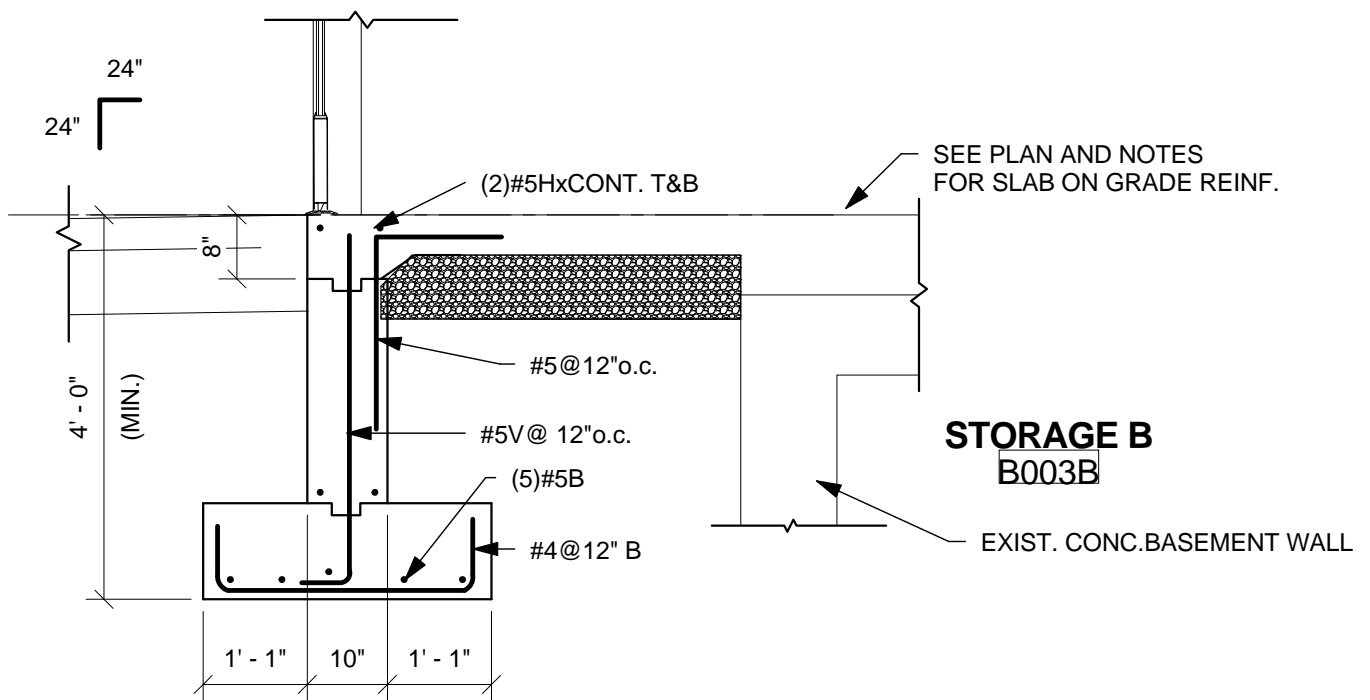
RESPONSES TO BID RFIS

A. SKETCHES ASSOCIATED WITH BID RFIS:

- 1) Refer to attached Sketch SSK-8 that was issued as part of the answered RFIs.

END OF ADDENDUM NO. 6

THIS PAGE LEFT INTENTIONALLY BLANK



SEE 9/S311 FOR ADDITIONAL INFO
NOT CHANGED FROM BID DOCUMENTS

FLETCHERTHOMPSON
ELEVATING DESIGN | SHAPING SOLUTIONS

ARCHITECTURE | ENGINEERING | INTERIOR DESIGN

SHELTON, CONNECTICUT 203 - 225 - 6500
 HARTFORD, CONNECTICUT 860 - 249 - 0888
 SOMERSET, NEW JERSEY 732 - 907 - 6800
 NEW YORK, NEW YORK 212 - 695 - 4767
 NAPLES, FLORIDA 239 - 687 - 1220
 BOSTON, MASSACHUSETTS 617 - 524 - 5200

EAST HARTFORD
GLASTONBURY
ELEMENTARY MAGNET
SCHOOL

SECTION

Project number	H090230
Date	FEB. 22, 2011
Drawn by	JAS
Checked by	CMW

SSK-8

Scale