



Town *of* Glastonbury



2008-2009 ANNUAL REPORT



Dedication

Walter (Walt) F. Hemlock

It is only fitting that Walter Hemlock (Walt) be honored for his many years of service to our Town of Glastonbury. He and his wife, Inez, served with great talent and dedication.

Walt is an honors graduate of Yale University and had a 35 year career as an engineering executive at Pratt and Whitney. He has lived in Glastonbury for over 55 years.

Walt has served on the Charter Revision Commission, Recreation Commission, Public Buildings Commission, High School Facilities Study Commission, Welles Street/Liebler Property Planning Commission, Board of Governors East Glastonbury Public Library, Board of Governors of Glastonbury Hills Country Club, CT Bar Association Grievance Panel, and several service committees of St. Dunstan's Church.

Perhaps the most outstanding of this service is his 30 years of elective office on the Board of Finance, where he served with dedication and contribution. His contributions to effective and efficient Town government were consistently based solely on what was best for the community. His judgment and integrity were respected by all those who worked with him.

Walt's and Inez's legacy continues through the dedicated service of their three daughters, Carol Ahlschlager, Ginny Roscoe, and Dianne Hemlock

Diane L. Northrop,
Chairwoman, Board of Finance

James R. McIntosh,
Vice Chairman, Board of Finance



Table of Contents

Town of Glastonbury

Annual Report 2008-2009

Our Town

Facts & Figures	4
Chairwoman's Message	5
Town Manager's Report	6
Probate Court	7
Town Attorney	8
Board of Education	8 - 10

Parks and Recreation

10 - 11

Human Services

Senior Services	11 - 12
Youth and Family Services	12 - 13

Library

Welles-Turner Memorial	13 - 14
South Glastonbury Public	14 - 15
East Glastonbury Public	15

Facilities Maintenance

Facilities Maintenance and Services	16
-------------------------------------	----

Housing Authority

Housing Authority	16
-------------------	----

Community Development

Community Development	16
-----------------------	----

SPECIAL SECTION

Administration	17
Organization Chart	17
2006 Calendar	18
Meeting Schedule	19
Phone Directory	20

Physical Services

Engineering	21 - 22
Highway	22
Fleet Maintenance	23
Water Pollution Control Authority	23

Sanitation

Water Pollution Control Division	24
Refuse Disposal	24

Public Safety

Police Department	25 - 26
Volunteer Fire Department	26 - 27
Civil Preparedness	27 - 28
Ambulance Association	28

Administrative Services

Administrative Services	29
Board of Finance	29
Financial Administration	29
Accounting	29
Property Assessment	29
Revenue Collection	29 - 30
Town Clerk	30

Human Resources

Human Resources	30
-----------------	----

Financial Highlights

Income Statement	31
Balance Sheet	32

Town Officials

Elected and Appointed	33 - 34
-----------------------	---------

Town Map

Inside Back Cover



Glastonbury Town Council 2009-2011

(Front Row): Carol H. Ashlschlager, Susan Karp, Chairman, Marti Curtis, and Michele Jacklin
 (Back row): Stewart "Chip" Beckett III, Majority Leader, Kurt P. Cavanaugh, Vice Chairman, Timothy P. Coon, Minority Leader, Robert J. Zanlungo, Jr., and Whit C. Osgood

Our Town Facts & Figures

Location

GLASTONBURY IS LOCATED TEN MILES SOUTHEAST OF HARTFORD, SOUTHERLY OF ROUTE 3 AND EASTERLY OF THE CONNECTICUT RIVER AND INTERSTATE 91. IT IS SERVED BY THE HARTFORD COUNTY REGIONAL PLANNING AGENCY AND THE CAPITOL REGION COUNCIL OF GOVERNMENTS.

Area

52.5 SQUARE MILES, 33,600 ACRES.

Population

APPROXIMATELY 33,500

Land Use

PRINCIPALLY RESIDENTIAL (APPROXIMATELY 60% OF LAND AREA) WITH SUBURBAN TO RURAL DENSITIES, GEOGRAPHICALLY COMPACT COMMERCIAL/ EMPLOYMENT DISTRICT (APPROXIMATELY 15%) AND SIGNIFICANT OPEN SPACE COMPRISING OF WATER COMPANY, STATE FOREST AND TOWN LANDS (25%).

Form of Government

TOWN COUNCIL, TOWN MANAGER, BOARD OF FINANCE.

TOWN HALL

2155 MAIN STREET
 GLASTONBURY, CONNECTICUT 06033
 LOCATED ONE QUARTER MILE SOUTH OF HEBRON AVENUE ON THE WEST SIDE OF MAIN STREET.

Tax Rate

29.05 MILLS JULY 2009

Number of Voting Districts

EIGHT

Net Grand List

ON OCTOBER 1, 2008
 \$4,105,603,530

State Representative

THOMAS KEHOE (D)
 240-8585

JASON ROJAS (D)

240-8585

State Senator

MARY ANN HANDLEY (D)
 240-8600

U.S. Congressmen

ROB SIMMONS (R)
 886-0139

JOHN LARSON (D)
 278-8888

U.S. SENATORS

JOSEPH LIEBERMAN (D)
 240-3566

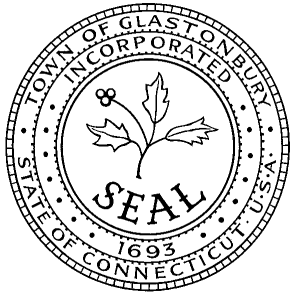
CHRISTOPHER DODD (D)
 240-3470

Town Government

TOWN MANAGER
 RICHARD J. JOHNSON

Town Council

SUSAN KARP, CHAIRMAN
 CAROL H. AHLSCHLAGER, VICE CHAIRMAN
 STEWART (CHIP) BECKETT III
 KURT P. CAVANAUGH
 TIMOTHY P. COON
 MARTI CURTISS
 WHIT C. OSGOOD
 CAROLYN M. TREISS (RESIGNED APRIL 2009)
 BARBARA WAGNER
 ROBERT J. ZANLUNGO JR.



Our Town

Message from the Chairwoman



Susan Karp

Dear Residents:

The Town of Glastonbury has completed another very successful year due in large part to the continued commitment of our professional staff, elected and appointed officials and our residents. While we have faced numerous challenges, we have worked together to make the best financial, policy and land use decisions while positioning Glastonbury to be a leader in Connecticut. The progress that we have made in so many areas will enable us to continue our careful land use decisions, tradition of outstanding service, innovative programs, strong fiscal policies and careful consideration of your tax dollars.

Glastonbury continues to be a leader in strategic land acquisition and preservation with the purchase of nearly 300 acres including Winter Hill Farm, Arbor Acres and the riverfront Hallmark Tire site. We are working with you to identify appropriate land use, develop recreational and agricultural options and protect our natural resources. Additionally, we have been successful in the continued development of the Gateway office complex bringing valuable medical services to our town and an additional \$1.85 million in sales revenue. We have also initiated a multiyear project to work with all stakeholders to plan a pedestrian friendly, economically vibrant town center.

As a community, we have appreciated the need to be “green” in our town buildings, schools, businesses and homes. Glastonbury has been recognized throughout our state and region for our innovative conservation

and efficiency practices as well as our expanded use of alternate energy. Every aspect of our operations from transportation to building audits to recycling is carefully reviewed ensuring that we work towards protecting our environment, assisting our residents and reducing costs.

We are proud of the careful planning and financial policies that have earned our continued AAA bond rating in these difficult economic times. We have worked closely with neighboring towns and cities to enact regional solutions to common challenges leading to cost savings and shared resources. The new East Hartford Glastonbury Elementary Magnet School will soon be constructed here and is just one example of the efforts of the Board of Education and the town to work together for the most cost effective and long term beneficial solutions.

It is truly my privilege to continue to serve our outstanding community and my pleasure to work with you, our staff and our talented volunteers to ensure our success. I am confident that we are well positioned to meet the challenges that lie ahead. Thank you for your support.

Sincerely,

Susan Karp
Chairman, Glastonbury Town Council



Richard J. Johnson

Our Town

Town Manager's Report

Dear Glastonbury Resident,

A review of the past year in Glastonbury indicates a variety of important successes and accomplishments. Examples are highlighted below and detailed throughout this report.

- ~ Continued successful sale and development of town-owned land within the Gateway area for Class A medical office buildings. Six new buildings in use or under construction for a total land sale revenue of approximately \$3.87 million to Glastonbury.
- ~ Purchased former Hallmark Tire site to complete town-owned riverfront park extending from Naubuc Avenue to south of Town Hall and totaling approximately 122 contiguous acres. Also purchased 140 acre former Winter Hill Farm parcel and 75 acre former Arbor Acres site.
- ~ Refinanced long term debt to achieve combined savings of approximately \$755,000 and reaffirmed the Town's AAA bond rating.

- ~ Energy conservation-alternate energy initiatives continue to be a high priority with projects receiving national, state and regional recognition. The Town's Energy and Green Initiatives program is published to the Town's web site at www.glastonbury-ct.gov.
- ~ Purchased 13± acre parcel off Oak Street for construction of new Glastonbury-East Hartford magnet school building. Design and site planning is underway for the new school building to accommodate approximately 435 K-5 students with a math-science focus and featuring a planetarium. The project is funded through a state grant.
- ~ Continued efforts to reduce the cost of Town operations while improving the quality of programs and services. Over the past year, approximately \$1 million in ongoing operating savings were identified and implemented through Town operations. Additionally, over the past several years Glastonbury has been awarded \$12± million in state and federal

grants to offset the cost of programs and projects.

- ~ Received state and national recognition for energy conservation, alternate energy, financial management, budget presentation and library services.

In closing, I want to thank all those who help make the successes and accomplishments described throughout this report possible. My thanks to members of the Town staff who work each day to provide top quality programs and services. A thank you also to the Town Council for their continued support of town programs and services, and to the many others who contribute their time and talents to help make Glastonbury a special community.

Sincerely,

Richard J. Johnson
Town Manager



Peter Alter

Our Town Probate Court

As you may be aware from earlier information that I have made available, there are sweeping changes coming to the Probate Court System. In last year's annual report, I shared that I fully support the changes that will protect the existence of Courts to fulfill the important needs of our community. With the passing of a year's time, the changes are now a reality. The current probate system has 117 courts. Effective January 5, 2011 there will be 54 probate districts. In an effort to reduce costs, the reduction in the number of courts was deemed necessary by the Governor and the legislature.

The Glastonbury Probate Court will remain in Glastonbury in its present location with the same staff. I am happy to announce that the Hebron Probate Court will be joining our District and that, pending the towns' approval, the district will be known as the Glastonbury/Hebron Probate Court.

I have been very involved in this process which has been years in the making. I have had numerous meetings and conversations with the Connecticut Probate Assembly; Paul Knierim, Administrator of Probate Courts; Richard Johnson, Town Manager of Glastonbury; the Board of Selectman in Hebron; as well as our state senators and representatives. The only change to the Glastonbury Probate Court is the increase of Hebron cases and my traveling to Hebron to hear cases. Everything else will remain the same. It was my stated goal to keep the Probate Court in Glastonbury to continue to

serve our community. While there were some moments during the process when that goal seemed less and less likely, the final result is excellent for our community.

My staff and I are looking forward to serving the residents of Hebron with the same level of professionalism, courtesy and consideration that we have shown the residents of Glastonbury and we are looking forward to a seamless transition. We are in the process of consolidation, which entails many activities, file management being the most critical. The workload with the addition of Hebron will increase by approximately 20%. To further assist in the transition, I will serve as the Acting Judge of Hebron until consolidation is final.

From July 2008/June 2009 I held 153 hearings. The matters before the court during the above mentioned timeframe were:

Decedent's Estates	316
Review of Programs for Mentally Challenged Persons	7
Name Changes	20
Trusts	20
Adoptions	7
Terminations of Parental Rights	33
Appointment and Supervision of Guardians of the Person	13
Appointment and Supervision of Guardians of Estate	38
MINC	12
Conservatorships	36
Passports	1292

The volume of passports processed in the court continues to decline. Passports are mandatory for all air travel out of the country. There is a passport card available for land travel to Canada and Mexico. There was a change in legislation to increase the dollar amount for an Affidavit in Lieu Estate; the amount was raised from \$20,000 to \$40,000.

Mary M. MacGregor, Clerk of the Court, is also President of the Connecticut Association of Probate Clerks (CAPC). In October, the Glastonbury Probate Court hosted a CAPC meeting at the Hilton showcasing the beauty of Glastonbury with centerpieces being baskets of Glastonbury grown apples and raffle gifts being various pictures of our town. My staff and I continue to attend educational training sessions. Last year I earned 19.25 credits, Mary M. MacGregor earned 35.50 and Lori Macri earned 26.25, well over the mandated continuing education hours.

I am encouraged that the changes to the Probate System will make the system more efficient and I want to ensure you that my staff and I are committed to serve with the professionalism you have come to expect.

I am honored to serve as your judge and appreciate the trust that you have placed in me.



Our Town Town Attorney

Shipman & Goodwin LLP has advised and represented the Town in a wide range of legal matters over the past year as Town Attorney. We have served as legal advisor and have appeared for and defended the rights of the Town in all actions, suits or proceedings where the Town is a party.

As legal advisor, we have worked with the Town on a variety of matters such as working with Town officials to complete the Town's acquisition of open space and the sale of property in the Gateway corporate park. We represent and defend the Town's interests in litigation, arbitration and other similar proceedings such as representing the Town's interests on Freedom of Information matters.

Our attorneys continue to work with the Town on labor contract matters and provide counsel to the Town on various employment issues. As we enter into our fifth year as Town Attorney, we want to thank the Town's officials and staff for the great working relationship that we have developed and maintained over the years.

Our Town Board of Education

In the 2008-2009 school year, the Glastonbury schools continued to build on the successes of the previous year which included the opening of a new elementary school (Naug Elementary School), celebrating 50 years of teaching foreign languages, and completing the Glastonbury High School accreditation evaluation process.

During the 2008-2009 school year, we focused once again on our three district-wide goals: promoting high achievement, developing communications, and strengthening staff development. Highlights for the past year include a focus on early literacy development, the introduction and development of our web portal, the introduction of a new parent notification system, the celebration of 50 years of teaching Russian, and a commitment to build the East Hartford/Glastonbury Elementary Magnet School in Glastonbury.

Noteworthy Accomplishments in 2008-2009

Achievement Scores

Once again, Glastonbury was encouraged by the results of our student standardized testing. In each subject area Glastonbury's students scored well above the state averages. Glastonbury's high participation rate in the Scholastic Assessment Test (SAT) also indicates the ambitions our students have for themselves. Ninety four percent of the students from the class of 2008 took the SATs, which compares to a participation rate of 83% for our state and 45% nationally. Despite our district's remarkably high participation rate, 2008 SAT scores remained significantly higher than state and national averages once again this year. Our district was also thrilled to congratulate a total

of seven National Merit Semifinalists from the Class of 2009. In a typical year, Glastonbury High School will have four or possibly five students accomplish this level of achievement.

Focus on Early Literacy

Several early literacy initiatives were implemented this past year as we worked to emphasize and promote literacy achievement in our schools. First, each elementary school hired a half-time Language Arts Resource teacher. These resource teachers supplemented the efforts of our existing reading teachers as they worked with individuals and groups of students to improve reading and writing skills and assisted teachers in enhancing their instruction. Second, a K-2 Literacy Council, representing all schools, reviewed and developed materials, strategies, and assessments for teachers to use in meeting the needs of early elementary learners. The Language Arts Resource Teachers were critical in working with this Council to develop a new K-2 language arts curriculum plan. Lastly, each elementary school convened a school-based literacy committee to focus on high-quality literacy instruction in all classrooms. The school district will build on these many successes next year as we focus on developing a brand new literacy program for grades three through five.

New Web Portal

Glastonbury Public Schools unveiled a new web portal (www.glastonburyus.org) in the late summer of 2008. The portal serves to improve communication and collaboration between students, parents, school staff and the community and provides "one stop shopping" for everyone seeking information



from both within and outside the district. Throughout the year, school staff were trained and supported as websites were developed for each school, each department, and each teacher. Even the Superintendent has implemented a popular modified blog known as “Ask the Superintendent” where he answers questions submitted by students, parents and community members. While the focus this year has been on the development of external, public-facing websites, the district looks forward to further developing some of the powerful internal features of the portal in the coming year. This communication vehicle has already had a distinct and positive impact on the district’s internal and external communication and on its productivity.

New Parent Notification System

The AlertNow Notification System was introduced this school year also with the purpose of improving school-to-home communications. Allowing both recorded phone messages and email messages to be sent to multiple phone numbers and email addresses instantaneously, the system enables our schools to communicate routine as well as emergency information in an effective and timely manner to parents and guardians. Inclement winter weather and the H1N1 flu outbreak in the spring both provided ample opportunity for our school system to utilize the AlertNow system. The new system was funded through a federal grant awarded to the Glastonbury Public Schools.

Celebrating 50 Years of Teaching Russian

Glastonbury celebrated a unique historic occasion this past year—50 years of teaching the Russian language in our schools. We

are the only public school in the country to have reached this milestone. Thanks to a generous grant from the Glastonbury Education Foundation, the district hosted a number of cultural enrichment opportunities for students, staff, and the Glastonbury community, including a Hartford Symphony Russian concert, a Yale Russian Chorus concert and Russian bazaar, and school assemblies that featured the Barynya Folk Ensemble. We are proud to continue offering our students the opportunity to study the critical Russian language as they prepare for life in our global society.

Changes to Class Rank Policy

After almost two years of research and consultation with colleges, universities, parents, students, faculty, and administrators, the Board of Education adopted a new policy that follows the national trend of discontinuing exact class ranking of high school students. The School Counseling Department recommended this change in class rank reporting to help Glastonbury students in the increasingly difficult college admissions process. Because a large percentage of our students achieve at an above average level, excluding class rank from transcripts allows the strength of the students’ GPA scores to rise to the forefront of admission decision-making. Those students who feel it is to their advantage to include their class rank on college applications may individually request that their school counselors include their rank in their letters of recommendation.

Magnet School to be Built in Glastonbury

In March, the Glastonbury Town Council approved the purchase of a site on Oak Street

to be used for a new school building for the East Hartford-Glastonbury Elementary Magnet School (EHGEMS). The EHGEMS opened its doors to students in 1992 and each year approximately 250 students, half from each town have attended the school which emphasizes science, technology, global studies, and Japanese language instruction. The new magnet school building will be designed for 435 students in pre-school through grade five from Glastonbury, East Hartford and Hartford. In keeping with the school’s focus on science, the building will include a planetarium which will offer the opportunity for all Glastonbury students to enjoy this exciting educational addition. It is projected that the building will welcome magnet students in the fall of 2011.

Parks and Recreation

The Parks and Recreation Department continues to provide a wide variety of recreation opportunities that work to enhance the quality of life in Glastonbury. Town sponsored programs, public parks and open space work together to meet the diverse needs and interests of the community and its members.

Several park improvements were completed this year. With support from the Glastonbury Rotary Club and Casella Custom Excavating, a new concession stand was built at the synthetic field and track at the high school. A press box was also installed and opened for use in October. With support from Pratt & Whitney, the Boundless

two new dugouts. Electrical improvements were made to the open space behind the Community Center to better support large community events like the Apple Harvest Festival and Summer Music Festival. Bike racks were installed at public facilities throughout town to help make Glastonbury a bicycle friendly community.

Special events continued to be one of the highlights of the year. They are many and varied. Santa's Run, the 3.5 mile road race co-sponsored with Quality Name Plate and the Nutmeg State Federal Credit Union continues to be a well attended family holiday tradition in Glastonbury. The annual Fishing Derby, Hershey's Track & Field Program, Senior Citizen's Picnic, Town Band Concerts, Children's Holiday Performances, Summer Music Festival, school vacation ski trips, and Pooch Pageant continue to be well received.

Other programs, for residents of all ages, are as varied as the interests of the town's population. The outdoor swimming areas, Eastbury Pond and Addison and Grange pools, continue to be popular destinations during the dog days of summer. Numerous competitive sports opportunities are offered for youth and adults alike including tennis lessons, junior team tennis, swim team, youth

basketball, co-ed soccer, men's, women's and co-ed softball, gymnastics and volleyball. Opportunities that contribute to a healthy lifestyle include aqua fitness, adult exercise class, aerobics, pilates, yoga, senior citizen exercise and fun runs.

The Department continues to look for ways to improve the efficiency of department operations including the use of technology. A quarterly newsletter, e-News, was initiated using email distribution to update customers on topics of interest and upcoming events. The Santa's Run road race began using computer chip timing for the event. A new brush chipper was purchased to improve the efficiency of tree maintenance by reducing labor, travel time, and fuel consumption.

An active committee of volunteers interested in building a Dog Park continued its fundraising efforts. A location within the Riverfront Park was selected for the dog park, and the group has raised approximately \$30,000 towards their \$50,000 fundraising goal. The first annual "Easter Egg Hunt for Dogs" attracted over 500 people and 200+ dogs, to raise over \$4,000 for the dog park. A late 2010 opening is anticipated.



Playground in Addison Park was expanded with the installation of a new, fully handicapped accessible airplane play structure. The Academy softball field was refurbished with the installation of a new scoreboard and sports lighting and the construction of





Human Services Senior Services

Looking ahead, several other projects are on the horizon for implementation in the next 12-18 months. A new pedestrian footbridge over the Holland Brook in Earle Park is scheduled for installation in 2010. A plan has been developed for improving public access to recently acquired open space parcels. The former Longo Farm on Hebron Avenue has been identified as a high priority and construction of a new access drive, parking, and trail improvements are anticipated in 2010. A \$50,000 Recreation Trails Grant will be used to extend the trail system in the Riverfront Park to connect with the Town Hall complex. The process of refining the design and submitting permit applications for Phase 2 construction at the Riverfront Park has been initiated. A total of \$1,735,000 in grant funds has been awarded by the State to help offset project costs. As envisioned, the project will include a river walk, scenic overlooks, boathouse, public boat launch, picnic areas, restrooms, children's playground, basketball court, and open lawn areas for special events. Regulatory approvals have been secured for construction of a one mile long multi-purpose trail to connect Smith School to Bell Street. Efforts are continuing to raise the balance of the funds needed for trail construction.

Many thanks to the dedicated staff, boards and commissions, community service clubs, private businesses, donors, and volunteers, whose contributions make Glastonbury a great place to live, learn, work and do business.

The Senior and Community Services Division of the Human Services department operates as a community focal point for the coordination of multi purpose services and programs, for persons living independently or with families in the community. The Senior and Community Services Division services individuals of all ages in order to promote independence, personal enrichment, and an enhanced quality of life. Offices are located in the new Riverfront Community Center.

The principal programs, services, and activities offered by this division are:

- ~ Outreach Social Work Services to Seniors, Disabled Adults and Financially at Risk Residents
- ~ Senior Center Programs
- ~ Dial-A-Ride Transportation
- ~ Senior Lunch Program
- ~ Friendship Circle Social Model Day Program
- ~ Extensive Outreach & Program Volunteer Opportunities
- ~ Tax Relief
- ~ Energy Assistance
- ~ Holiday Giving Programs
- ~ Back-to-School Supplies & Services
- ~ Substance Abuse Prevention Services

Senior Services provides a wide variety of services and programs to Glastonbury's older residents. The Dial-A-Ride program provides accessible in-town transportation for seniors and disabled adults. The department also offers seniors a nutritious lunch program Monday through Friday. The Senior Outreach Program helps frail and homebound seniors access the information and services needed to remain independent in the community.

The Senior Center offers a variety of town sponsored cultural, recreational and wellness programs at the Riverfront Community Center. The Friendship Circle is a program for frail seniors which offers stimulating mental and physical activities in a structured, supervised setting. Information on services and programs for seniors is available through a monthly informational newsletter, The Sharing Tree, which is distributed to approximately 2300 Glastonbury households.

The Senior Services Volunteer Program helps the community face the challenge of providing necessary services with limited resources. Approximately 130 volunteers donate their time and talents to offer a wide of services that benefit the Glastonbury seniors.

Social Services strives to promote the well-being, self-sufficiency and quality of life among Glastonbury residents by administering various programs and

(continued on page 12)





Human Services Youth and Family Services

(continued from page 11)

initiatives which provide individuals and families with the necessary support and opportunities to realize their fullest potential.

Some of the Departments accomplishments of the past fiscal year include the following:

- ~ Provided Outreach Social Work Services to 1,147 Glastonbury residents and their families. This program assists individuals in need to maintain their physical, social and financial independence by providing information, referral, and assistance.
- ~ Provided 20,888 rides to senior and disabled adults through the Dial-A-Ride program.
- ~ In cooperation with the Welles Turner Library, opened a Life Options Center to assist the 50+ population with career re-tooling and retirement planning. This was made possible as part of a three year grant from the Hartford Foundation for Public Giving.
- ~ Increased participation in Senior Center Programming by 5% by offering new programs and initiatives.
- ~ Provided food and toys to 146 families through the Thanksgiving Basket and Holiday Toy Shop Programs.
- ~ Offset the operational costs of the Riverfront Community Center by 45% with revenues generated by rental fees.
- ~ Purchased a second natural gas van for the Dial-A-Ride program. More than 50% of the cost was offset by the Connecticut Clean Fuel Program and a bequest.

Glastonbury Youth and Family Services coordinates, supports and delivers services to youth and families in the Glastonbury community with children and young adults under the age of twenty-one. Our mission is to serve Glastonbury youth and families by exceeding client expectations by providing positive development opportunities to empower youth and their families. Youth and Family Services has three program areas: Clinical Services, Creative Experiences, and Outreach Services.

This year Clinical Services provided counseling services to 960 individuals and 492 families. Throughout the year the staff conducted seventy-nine student groups at both the elementary and secondary school levels; offered seven Parent Education and Support groups and workshops for parents of elementary-aged children and parents of adolescents; and provided seventy-six classroom/playground presentations on a variety of positive youth development topics.

Creative Experiences offered three dramatic presentations throughout the year: Annie Get Your Gun the summer production, You're a Good Man Charlie Brown the fall production, and The Little Mermaid the spring production performed by the Peter Pan Players. Other programs coordinated by Creative Experiences are: Youth Services Action Group (YSAG) which is a service learning opportunity involving students in grades 7-12; Pass It On is the student run community television program; and Odyssey of the Mind is a creative problem solving team experience. Odyssey of the Mind competed on the state level. One of the teams qualified and competed on the national level

at the University of Iowa. The team placed 5th in a division of 48 teams representing 28 nations. In addition a new program offered through Creative Experiences was Peace Jam. Peace Jam is a service learning program where Glastonbury youth study the life and work of one of the PeaceJam Nobel Peace Laureates, and the strategies they are using to address pressing global issues.

Outreach Services provided on-site programming at Glastonbury High School, Smith Middle School, and Welles Village. The outreach workers provided short term individual support services to students at the middle and high school during the school year. The High School Outreach Services worked with adolescents through various programs such as Peer Education, Peer Support, Peer Mediation, and Time Management. The Middle School Outreach Services worked with adolescents and children through the Homework Club, in-school presentations and After-School Programming.

The summer of 2008 marked the 18th year for the W.A.C.Y. Program. Welles Village Activities Council for Youth is a summer activity and leadership training program for youth ages 7-18 living in Welles Village. Twenty-two teenagers participated in the leadership training program and thirty-two, 7-12 year olds participated in the summer activity program. The program continues to be a collaborative effort between Youth and Family Services, the Housing Authority and Police Department – Youth Division. Daily activities included arts and crafts, sports, games, and special themed days and field trips.



Library Welles-Turner Memorial

Substance Abuse Prevention Services monitors and coordinates community substance abuse prevention and intervention initiatives and programs. This includes youth prevention and educational programs, parent/adult substance abuse education programs, and senior education programs. The Prevention Coordinator is available to provide professional development and education to community groups upon request. Substance Abuse Prevention Services works in collaboration with the Glastonbury Schools, Law Enforcement, Glastonbury Alcohol and Drug Council (GLAD), various Town Departments, and community members town-wide to address substance abuse among the Glastonbury youth.

The Youth Advisory Council (YAC), a group of 8th-12th grade community leaders, worked on the developing, designing, and implementing the Glastonbury Saves/Tip line Card along with other prevention initiatives funded through the DMHAS Strategic Prevention Framework State Incentive Grant to Stop Underage Drinking. Empowering Families, a middle school prevention program was held in fall of 2008 and spring of 2009. This program is a collaborative effort between Youth and Family Services, Glastonbury Schools, and the Glastonbury Police Department. Youth from the Youth Advisory Council (YAC) and Leaders Engaged in Action Projects (LEAP) have assisted in workshops to bring the prevention message to the community.

The Welles-Turner Memorial Library offers a variety of programs and services to inform, educate and enrich members of the community. Approximately 50% of Glastonbury citizens have library cards.

The Library owns 139,189 books and magazines and 25,664 DVDs, audio books and electronic resources. It also has subscriptions to two downloadable audio book services: NetLibrary and OverDrive giving users access to approximately 4,500 titles that can be downloaded to personal computers and also transferred to portable devices. Visit the Library web page: www.wtmlib.com and click on "Downloadable Audio Books" for more information.

These databases were added: ConsumerReports.org which contains ratings, reviews and buying advice on a variety of products, and JobNow! an online interactive job search program.

New children's services include: "Together Time Tales," a storytime for parents/caregivers and young children held on the second Saturday of each month through May. "Count Me In" offers an interactive introduction to math concepts using children's literature. This program is geared for four-year-olds. The Children's Department also introduced two Early Literacy Stations: the English edition and the bilingual Spanish edition. These workstations provide interactive educational software designed to make learning fun for children ages 2-10. Other accomplishments last year include:
~ Circulated 566,440 items.
~ 408,281 people visited the Library.



- ~ Started a collection of Blu-Ray DVDs for the public to borrow.
- ~ Participated in two community-wide read programs: "The Big Read" in conjunction with the National Endowment for the Humanities and the Hartford Public Library. Participants read and discussed *To Kill a Mockingbird* by Harper Lee; and "Glastonbury Reads a Book where readers read *Dreams of My Russian Summers* by Andre Makine. This program was held in conjunction with the celebration of 50 years of teaching the Russian language in the Glastonbury Public Schools.
- ~ Maintained a Hennen's American Public Library Rating (HAPLR), a public library rating system, in the 96th percentile in the Population Category, 25,000-49,999.

Telephone: 860-652-7719

www.wtmlib.com

Library Hours:

Sunday:	1 – 5 p.m.
(Sunday after Labor Day – Sunday before Memorial Day)	
Monday, Tuesday,	
Thursday:	9 a.m. – 9 p.m.
Wednesday:	Noon – 9 p.m.
Friday:	9 a.m. – 6 p.m.
Saturday:	9 a.m. – 5 p.m.



Library South Glastonbury

The South Glastonbury Public Library, incorporated in 1926, is located in a former Methodist church building at 80 High Street. It is the oldest church building in Glastonbury. Dating to 1828, it is on the National Register of Historic Places. The building housed an active congregation of mill workers until it disbanded in 1843. It later served as a church for black workers and was the site of many abolitionist meetings. The building eventually became privately owned and was turned over to the newly incorporated library board in 1926.

In addition to a varied periodical collection, the Library houses two very special groupings of books. One is the Kinne collection which contains books on Early American arts and crafts. The other is the Hodge collection which has an emphasis on all aspects of nature. These books are available for four-week loans.

A womens' book discussion group meets on the first Tuesday evening of the months October – June. A childrens' story hour is planned for Friday mornings throughout the school year.

The Library is staffed by volunteers and is overseen by a Board of Trustees who manage policy and finances.

The Library is funded by an annual grant from the Town of Glastonbury and an annual fund drive for private gifts and donations.

The Library has a large adult collection, featuring both fiction and non-fiction in both regular and large print. We have received a grant from the Ensworth Foundation to substantially increase the large print collection. There is an emphasis on acquiring first novels. There's also an excellent collection of books for preschoolers through teen years.

Telephone: 860-633-4793

[www.southglastonburylibrary.org/
Homepage.htm](http://www.southglastonburylibrary.org/Homepage.htm)

Library Hours:

Sunday:	2 – 4 p.m.
Monday – Friday:	1:30 – 3 p.m.
Monday, Wednesday, Thursday:	7 – 8:30 p.m.

Library East Glastonbury

The East Glastonbury Library, affectionately known to residents as “Little Red”, is located at 1389 Neipsic Road. The library was incorporated in 1960 as a Connecticut non-profit corporation, and was founded by parents of children attending the newly opened Eastbury Elementary School. At the time, Little Red was opened to provide a library for the school.

Little Red, located next to the school, was built in 1889, as a one-room schoolhouse. In 1900, a second room and foundation were added. Eight grades were taught in the school, four grades and one teacher in each room. It continued as a school until Eastbury School was built. In 2002 the building was declared a Historic Building by the State of Connecticut.

Little Red has grown over the years, and is now a full service library serving the whole Glastonbury community. It is staffed completely by volunteers and funded by the Library Board of Directors, an active Friends group, an annual grant from the Town of Glastonbury and by private gifts and donations. The Friends hold a used book sale every fall and a Book, Bake and Bric-a-Brac Sale every spring to raise money to purchase books for the Library. During the year, 650 new books were added to the collection.

The front room is home to a collection of adult fiction and non-fiction, magazines and local newspapers. Most best selling books are available, along with travel books, cookbooks, reference books, biographies, a large selection of mysteries and large print books. The back room houses an extensive collection of children's books. Many classes from Eastbury School use the Library on a weekly basis.





Facilities Maintenance & Services

The Library sponsors a weekly book study group and a weekly children's story hour aimed at kindergarten and preschool age children. The foyer hosts an ever changing display of special collections ranging from historic Glastonbury memorabilia to doll collections, teapot collections and hat collections.

Telephone: 860-633-5637

1389 Neipsic Road

Library Hours:

Monday: 1 – 4 p.m., 7 – 9 p.m.

Tuesday: 9 a.m. – 4 p.m.

Thursday: 9 a.m. – 4 p.m., 7 – 9 p.m.

The Facilities Maintenance and Services Department is responsible for operations, maintenance, management, and construction of over 270,000 square feet of facilities as well as management of design and construction of all municipal building projects. The Department performs or manages preventive maintenance, custodial services, and project design and construction management using skilled in-house staff and contracted service providers. The Department also manages over \$1 million in utility and communication accounts for all Town facilities.

Department facility and installed new roll-up garage door to accommodate SWAT vehicle to enhance police response capabilities.

- ~ Installed new office/operational building at Bulky Waste Facility to provide better staff and customer support.
- ~ Replaced roofs on Town Hall and Academy facilities.
- ~ Performed maintenance and repairs to preserve historic Gideon Welles House and Cider Mill properties.

In addition, the Department is responsible for bidding, managing, and inspecting a variety of contracted services and vendors for all Town agencies.

All public building projects are managed by the Department, which also provides staff support to the Public Buildings Commission.

Highlights from the previous year include:

- ~ Recipient of US EPA Energy Star award for energy efficiency of Town Hall.
- ~ Performed an energy audit of Town facilities and implemented energy saving improvements identified through the audit.
- ~ Participated in Demand Response program to reduce peak demand on New England grid and generate over \$30,000 in annual payments to Town.
- ~ Provided electrical and plumbing services for installation of new fairgrounds electrical system, construction of new GHS concession stand, and installation of natural gas vehicle fueling facility.
- ~ Renovated Roll Call area in Police





Housing Authority

The Housing Authority manages a total of 412 rental units in town that it rents to low and moderate income families and seniors. The Authority also administers up to 33 Housing Choice Vouchers that subsidize family rents in private owned rental properties. Properties managed by the Housing Authority include Welles Village, Center Village, Village Green, Knox Lane Annex, the Herbert T Clark House, Herbert T Clark Assisted Living and 3 Condominiums.

In addition to managing its property portfolio, the Housing Authority also serves as the administering agency for the Towns of Glastonbury's Fair Rent Commission and Moderate Priced Housing Program.

Recent Activities

During the past year the Housing Authority has pursued many projects. Some highlights include:

- ~ Renovated 11 units' kitchen and bathrooms in Welles Village using capital fund dollars.
- ~ Received \$461,360 in formula awarded American Recovery and Reinvestment Act (ARRA) funds in March.
- ~ Advertised for and selected a contractor to continue the kitchen and bathroom renovations using the ARRA funds in June.
- ~ Commissioned an architectural design team to produce renovation plans for Village Green so the Authority could seek funding for a rehabilitation of the property.

Information about the Authority and the programs it administers can be found on our web page: www.glastha.org.

Community Development

Development activity slowed during the year as Glastonbury, the State, and the Nation dealt with a significant economic downturn. New home construction waned as potential buyers postponed new home purchases. However, positive activity was evident in the commercial sector with construction underway on two new pharmacies and two more Class A buildings within the Gateway Medical Campus. Two local manufacturing businesses also announced plans for expansion/relocation within the Town.

The recently completed Town Center Master Traffic Study provided important guidance on changes needed to ensure economic vitality throughout the Central Business District.

On the wellness front, the Health Division continued regional planning and participation to ensure the efficient delivery of services in response to public health needs.

The Department also participated in an important regional initiative sponsored by the Capitol Region Council of Governments to provide reduced cost permit processing software. Implementation is anticipated in the spring of 2010 with 8 Capitol Region towns participating.

The Conservation Commission continued work on important revisions to the Inland Wetlands and Watercourses Regulations in accordance with standards established by the State of Connecticut, Department of Environmental Protection. Implementation is anticipated during winter/early spring 2010.

Finally, residents are encouraged to visit the Department's website at www.glastonbury-ct.gov, click on Departments, click on Community Development, to view/ the Town's long range planning document – 2007-2017 Plan of Conservation and Development.

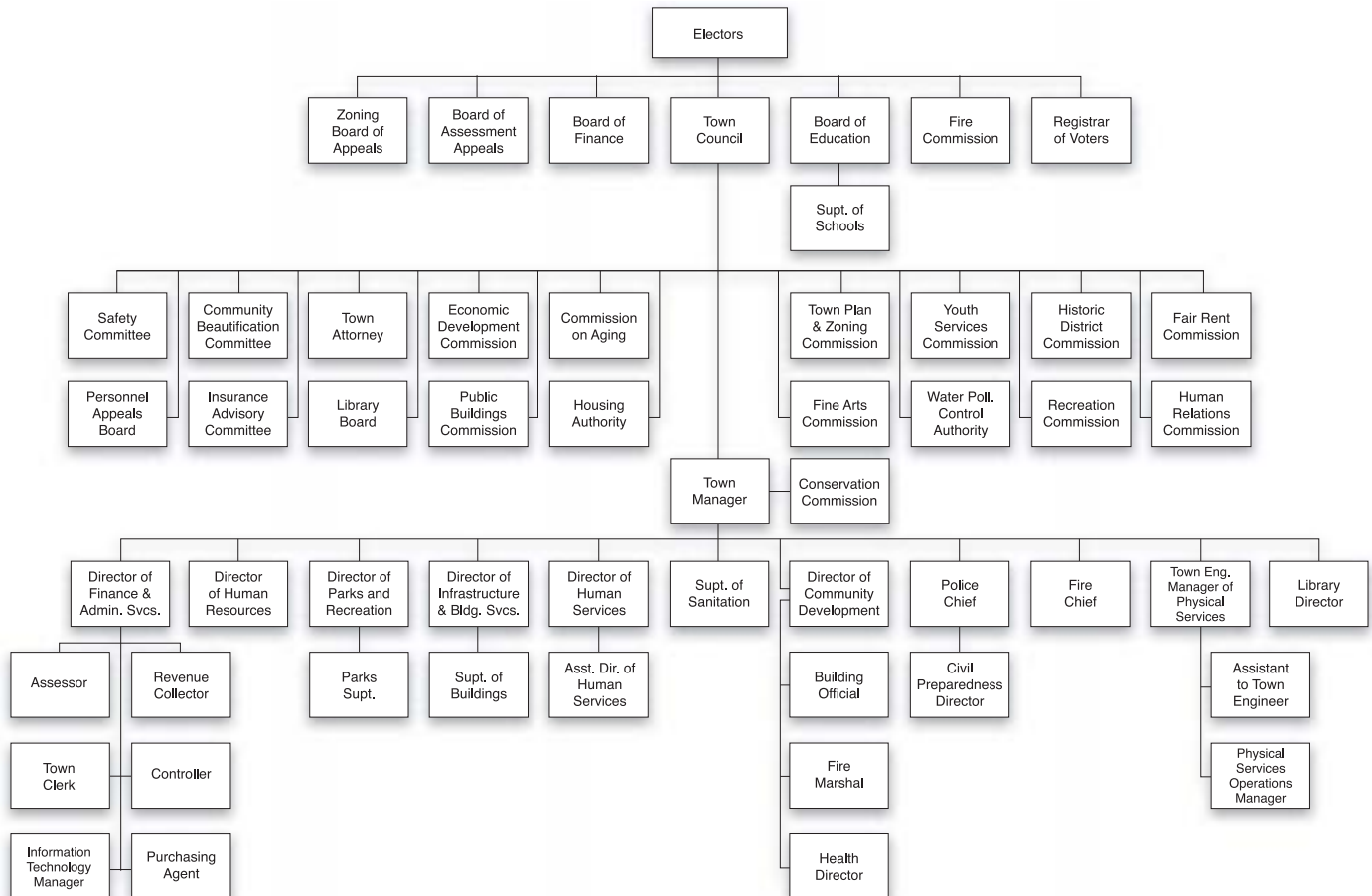




SPECIAL PULL-OUT SECTION

Organizational Chart

Town Manager Richard J. Johnson	Assessor David L. Valente	Fire Chief Acting Fire Chief Thurz	Purchasing Agent Mary F. Visone
Chief of Police Thomas J. Sweeney	Assistant Town Engineer Stephen A. Braun	Fire Marshal Christopher N. Siwy	Superintendent of Buildings David Sacchitella
Community Development Director Kenith E. Leslie	Building Official Edward P. Pietrycha	Physical Services Operations Manager Charles Mahan	Superintendent of Sanitation Michael J. Bisi
Director of Finance and Administrative Services Diane M. Waldron	Civil Preparedness Robert F. DiBella	Housing Authority Director Neil Griffin	Town Attorney Bruce Chudwick
Director of Human Resources Patricia C. Washington	Collector of Revenue Norman Z. Rosow	Director of Human Services Patricia R. Schneider	Town Clerk Joyce P. Mascena
Town Engineer, Manager of Physical Services Daniel A. Pennington	Controllor Nina R. Cousins	Library Director Barbara J. Bailey	Assistant Director of Human Services Ann Grabowski
Director of Building Services Herbert L. Schwind	Director of Health David W. Boone	Information Technology Manager Robert L. Ashton	
	Director of Parks and Recreation Raymond E. Purtell		





SPECIAL PULL-OUT SECTION

Dates to Remember 2010

Financial Administration

January 28 Annual Town Meeting
March 25 Final Budget Hearing

Fire Marshal/Local Open Burning Official

June 15 - September 15 Open Burning in accordance with the regulations of the Department of Environmental Protection with the appropriate permit issued by the Local Open Burning Official are banned during this period. Barbeques and other fires used for the consumption of food and campfires are not part of the prohibition.

Police Department

October 1 Deadline for Annual Burglar Alarm Registration

Property Assessment

February 20 Deadline for filing written appeals to Board of Assessment Appeals
October 1 Annual Assessment Date: Property owners listed in Grand List
November 1 Last day to file business personal property declarations with assessor

Refuse Disposal

March 17 Extended operating hours for Transfer Station ONLY during Day Light Savings time begin, Wednesdays 7:00 a.m - 7:00 p.m.
September 29 Modified Day Light Savings hours, Wednesdays 7:00 a.m. - 6:00 p.m.
November 3 Last Wednesday of Transfer Station extended operating hours
Household Hazardous Waste Collection schedule for 2010 will be available in the Town Newsletter and local newspaper and individual mailers.

Revenue Collection

January 1 Second Installment of 2006 grand list Taxes become due. The taxes include real estate, personal property and Supplemental motor vehicle.
July 1 First Installment of 2007 grand list Taxes become due. The taxes include real estate, personal property and motor vehicle.
November 1 Sewer Use Bills become due

NOTE: Credit card payments are accepted at www.officialpayments.com. A drop-off box for payments is located in the circle by the flag poles at Town Hall.

Social Services

February 2 Homeowners' and Additional Veterans' Tax Relief Programs begin
March Camp CONNRI and Channel 3 Country Camp applications available
April 30 Last day to apply for Energy Assistance benefits
May 14 Last day to apply for Homeowners' Tax Relief
May 17 Renters' Tax Relief Program begins
May 31 Last day to apply for Operation Fuel benefits
July & Aug. Back-To-School promotional programs
September 15 Last day to apply for Renters' Tax Relief.
October 1 Last day to apply for Additional Veterans' Tax Relief benefits.
October 15 Energy Assistance application period begins.
November 18 Thanksgiving food baskets distributed (tentative).
December 1 Operation Fuel application period begins.
December 13, 14 & 15 Annual Toy Shop (tentative).

Sanitation

Hazardous Waste Collections April 10, April 24, May 8, September 11, September 25, October 16

Town Clerk

April 17 Rivers & streams fishing season opens the 3rd Saturday in April at 6:00 AM
June 1 Dog Licenses become available for the next fiscal year
August 10 Primaries for the November 2 Election if challenges are filed
October 1 Absentee ballots for November Election become available in Town Clerk's office
Various Hunting season opens
October 26 Last day to register to vote in person in order to vote in the November election (except for those who move to Town, turn age 18, or become a U.S. Citizen after this date).
November 2 Election Day

Water Pollution Control Division

November 1 Sewer Use payments due.

SPECIAL PULL-OUT SECTION

Community Events 2010



Youth & Family Services

February 28	Charity Cabaret, Gideon Welles School, 7-10PM
June 4	"Destination Imagination", Gideon Welles School, 7:30PM
August 12, 13, 14	Summer Show, TBA, Smith Middle School

Apple Harvest Festival

October 16 & 17 at the Riverfront Park

Welles-Turner Memorial Library Events

National Library Week	April 11-17, 2010
Children's Book Week	May 10-16, 2010
Book Sale	May 15, 2010, 9 a.m. – 5 p.m. September 11, 2010, 9 a.m. – 5 p.m.
Library Card Sign Up Month	September
Banned Book Week	September 25 – October 2, 2010
Teen Read Week	October 17-23, 2010

Parks & Recreation

Fun Runs (Tuesday evenings)	6:30 p.m. GHS – June 22 & 29, July 6, July 13, July 20, July 27, August 1, August 3, August 10
Kid's Pooch Pageant	July 12, 6:00 p.m. Hubbard Green - Pre-registration required
Santa's Run 3.5 Mile Run	December 5, Noon at Glastonbury High School (Snowdate Sunday, December 12)
Senior Picnic	August 11, Festivities begin at 9:30 a.m. at the Riverfront Community Center
Summer Music Festival	Wednesdays 7:00 p.m. – July 7, July 14, July 21, July 28 at Riverfront Park
Town Band Concert	Sundays 7:00 p.m. – July 11, July 18, July 25, August 1 at Hubbard Green

Boards and Commissions Meeting Schedule

Town Council	2nd and 4th Tuesdays	Town Council Chambers
Board of Education	2nd and 4th Mondays	Town Council Chambers or GHS Library
Board of Finance	3rd Wednesday	Town Hall Meeting Room, 2nd Floor (4 p.m.)
Town Plan & Zoning Commission	1st and 3rd Tuesdays	Town Council Chambers
Board of Assessment Appeals	As required	Town Hall
Building Board of Appeals	As required	Town Hall
Commission on Aging	5/3, 9/13, 11/1	Riverfront Community Center, 300 Welles Street
Community Beautification	2nd Wednesday	Town Hall Meeting Room, 2nd Floor
Conservation Commission	2nd and 4th Thursdays	Town Council Chambers
Economic Development	1st Monday	Office of Community Development, Town Hall, 3rd Floor
Fair Rent Commission	As required	Herbert T. Clark House, 45 Canione Road
Fine Arts Commission	2nd Monday	Glastonbury High School, Room 136
Fire Commission	1st Thursday	Fire Company #1, 2825 Main Street
Historic District Commission	As required	Town Hall
Housing Code of Appeals	As required	Town Hall
Human Relations Commission	Quarterly	Town Hall Lunch Room, 2nd Floor
Insurance Advisory Committee	Quarterly	Engineering Conference Room, Town Hall, 3rd Floor
Public Buildings Commission	1st Wednesday	Town Hall Meeting Room, 2nd Floor
Public Housing Authority	3rd Wednesday	Herbert T. Clark House, 45 Canione Road
Recreation Commission	3rd Thursday	Parks and Recreation, 1086 New London Turnpike
Safety Committee	4th Monday	Town Hall Meeting Room, 2nd Floor
Water Pollution Control Authority	2nd and 4th Wednesdays	Town Council Chambers
Welles-Turner Library Board	2nd Monday	Welles-Turner Memorial Library, 2407 Main Street
Youth and Family Services Commission	2nd Wednesday	Youth and Family Services, 321 Hubbard
Zoning Board of Appeals	1st Monday	Town Council Chambers

NOTE: Please contact the Town Clerk's Office at 652-7616 to confirm dates, times and locations as some schedules change due to holidays.

SPECIAL PULL-OUT SECTION

Town Departments



Town Departments For Information

	Call	Phone
General Information	Information Center	860-652-7710
Accounts Payable	Accounting	860-652-7595
Administration	Town Manager	860-652-7500
Assessment	Assessor	860-652-7600
Assessment	Info Line	860-652-7606
Birth Certificates	Town Clerk	860-652-7616
Building Permits	Building Office	860-652-7521
Bulky Waste Disposal	Sanitation	860-652-7772
Children's Department	Welles-Turner Library	860-652-7718
Civil Preparedness	Civil Preparedness	860-652-7576
Community Center (Riverfront)	Community Center	860-652-7638
Death Certificates	Town Clerk	860-652-7616
Deeds/Town Clerk		860-652-7616
Demolition Permits	Building Office	860-652-7521
Dial-A-Ride	Senior Services	860-652-7643
Dog Licenses	Town Clerk	860-652-7616
Dog & Animal Problems	Animal Control Officer	860-633-7227
Drainage Problems	Engineering	860-652-7735
Electrical Permits	Building Office	860-652-7521
Elderly Municipal Agent	Senior Services	860-652-7638
Energy/Fuel Assistance	Social Services	860-652-7638
Engineering	Engineering	860-652-7735
Facilities Services	Facilities	860-652-7703
Financial Administration	Administrative Services	860-652-7586
Financial/Medical Assistance	Social Services	860-652-7638
Fire Chief	Fire Department	860-652-7555
Fire Marshal	Fire Marshal	860-652-7526
Food Bank	Social Services	860-652-7638
Health Matters	Health Department	860-652-7534
Highways	Physical Services	860-652-7749
	Operation Manager	
Housing Authority Comm.	Housing Authority	860-652-7568
Inland Wetlands	Community Development	860-652-7510
Landfill Permits	Engineering	860-652-7735
Libraries	Welles-Turner	860-652-7719
	S. Glastonbury	860-633-4793
	E. Glastonbury	860-633-5637
Marriage Licenses	Town Clerk	860-652-7616
Nursing	Visiting Nurse Assoc.	860-633-3521
Passport Information	Probate	860-652-7630
Personnel	Human Resources	860-652-7501
Planning	Community Development	860-652-7510
Plumbing & Heat Permits	Building Office	860-652-7521
Police (General Info)	Police Department	860-633-8301
Probate Court	Probate Clerk/Judge	860-652-7629
Recreation	Recreation Department	860-652-7679
Recreation Schedules/ Cancellations	Info Line	860-652-7689
Refuse Disposal/Recycling	Info Line	860-652-7790
Refuse Disposal/Recycling	Office	860-652-7772
Registration of Voters	Registrar of Voters	860-652-7627
Salvation Army	Social Services	860-652-7638
Sanitary Inspection	Health Department	860-652-7534
Sewer Department/ Water Pollution Control	Sanitation	860-652-7772
Sewer Use Bills	Sanitation	860-652-7772

Snow Removal & Streets	Highway Superintendent	860-652-7749
Social Services	Social Services	860-652-7638
Taxes Collector of Revenue		860-652-7614
Taxes Info Line		860-652-7606
Tax Relief Program	Social Services	860-652-7638
Trees Parks and Recreation		860-652-7679
Voting	Registrar of Voters	860-652-7627
Youth & Family Services	Youth & Family Services	860-652-7660

Board of Education

Central Office	Contact Person	Phone
General Information		860-652-7961
Superintendent of Schools	Alan Bookman	860-652-7961
Assistant Superintendent	Christine Brown	860-652-7963
Assistant Superintendent	Jeffrey Kitching	860-652-7965
Business Manager	Sharon Smith	860-652-7940
Administrator for Pupil Services	Linda Roberts	860-652-7971
Transportation Coordinator	Angelo Balesano	860-652-7295

Curriculum	Director	Phone
Art	Dan Roach	860-652-7954
Athletics	Trish Witkin	860-652-7200 ext 2116
Career & Vocational Education	Rosemary Tralli	860-652-7200 ext 2002
Foreign Language and ELL	Rita Oleksak	860-652-7954
Health & Physical Education	Ann Marie Colebrook	860-652-7200 ext 2105
History & Social Sciences	Ilene Lowenstein	860-652-7967
Language Arts & Reading	Catherine Buchholz	860-652-7967
Mathematics	Michele Watson	860-652-7975
Music/Patricia Lignelli		860-652-7975
Special Education	Mary Van Deun	860-652-7971
School Counseling	Edward Gregorski	860-652-7200 ext 1800
Science	Fred Myers	860-652-7200 ext 2002
Technology and Information Services	Brian Czapl	860-652-4910 ext 364

Curriculum	Principal	Phone
Glastonbury High School	Matthew Dunbar	860-652-7200 ext 1025
Smith Middle School	Donna Schilke	860-652-7040
Gideon Welles School	James Gregorski	860-652-7800
Buttonball Lane School	Margaret McQuillan	860-652-7276
Eastbury School	Sheryl Harriman	860-652-7858
Hebron Avenue School	Linda Provost	860-652-7875
Hopewell School	Kathleen Murphy	860-652-7897
Naubuc School	Mike Litke	860-652-7918
Nayaug School	Holly Hageman	860-652-4949
East Hartford/Glastonbury Elementary Magnet School	Glen Peterson	860-622-5400
Two Rivers Middle Magnet School	Jean Privitera	860-290-5320
Great Path Academy (Magnet)	Thomas Danehy	860-512-3560
Town Web Site	www.glastonbury-ct.gov	

FIRE, POLICE & EMERGENCY	DIAL 911
Routine Calls to Police Department	860-633-8301



Physical Services

The Physical Services Department is responsible for the maintenance and inventory of the Town's roadways and infrastructure. This includes existing systems as well as additions proposed through subdivision and site development.

Engineering

The Engineering Division performs design review of streets, traffic control systems, storm and sanitary sewers, sidewalks, and other public improvements proposed in conjunction with land development. Recommendations are made to appropriate Boards and Commissions of the Town. Following approval, the Division inspects the construction of the public improvements to assure conformance with Town standards.

The Division performs routine inspection of existing Town roads, drainage systems, and traffic control signs and signals. Public inquiries and comments are investigated to address potential problems or defects.

Road, storm drainage, and sanitary sewer conditions and maintenance history data are maintained in the Road Manager data network. An ongoing program of obtaining and recording traffic counts and spot speed data is conducted by staff and pertinent data is shared with the Police Department.

This Division is responsible for in-house design of public improvements or coordination with private consultants when used in conjunction with Town projects. The Division provides civil engineering services for all Town Departments and provides technical and clerical support to the Water Pollution Control Authority.

In addition, staff maintains property line, easement, and other pertinent mapping data in the Town's web-accessible and very robust Geographic Information System (GIS).

Some recent accomplishments include:

- ~ Completed design and construction for approximately 4,400 linear feet of new sidewalk in high priority locations identified by the Town Council on Main Street, Naubuc Avenue, New London Turnpike, and Willieb Street.
- ~ Obtained State, Federal, and local permits for the Smith Middle School to Bell Street Multi-Use Trail.
- ~ Prepared A-2 boundary surveys for the 144-acre Winter Hill Farm property, 13-acre Oak Street Magnet School, and a 28-acre parcel on Bell Street in support of the Town Property Acquisition Program.
- ~ Designed and constructed a new press box building for the High School football field complex.
- ~ Actively participated in and coordinated efforts leading to the issuance of an updated major traffic generator certificate from the State Traffic Commission for the Town-owned Gateway Corporate Park. Said certificate will allow up to 250,000 square feet of additional Class A office development, thereby enhancing the Town's commercial base.

Highway

The Highway Division is responsible for maintenance, repair, and construction relative to streets, drainage systems, sanitary sewers, traffic controls, sidewalks, and other features of the Town's infrastructure system. Snow and ice removal and joint operation of the Bulky Waste sand and gravel facility are also primary functions. Overall maintenance and construction is accomplished through the use of in-house labor and equipment working in conjunction with contractual entities.

(continued on page 22)





(continued from page 21)

Highway Division successes and accomplishments during the past year include:

- ~ Coordinated significant improvements to Naubuc School and Eastbury School pavement areas. Town Highway staff worked with contractual entities to improve drainage and replace the pavement structure for all parking, driveway, and paved play areas. All work was completed within the brief summer recess time period.
- ~ Coordinated and assisted an operation to crush and screen discarded rock, concrete, and asphalt pieces to produce a recycled processed gravel product that can be utilized as road base material. Production costs saved approximately \$162,000 as compared to the cost to purchase commercially.
- ~ Completed Phase I improvements to the easterly end of the western section of Country Club Road. Work consisted of complete road reconstruction that resulted in storm drainage upgrades, road widening, and geometric improvements.
- ~ Successfully integrated the “hot in-place asphalt recycling” process into the Annual Paving Program. Selective usage of this methodology, where appropriate, reduced surface treatment costs by approximately \$100,000.

Other typical Highway Division functions such as street sweeping, catch basin cleaning, roadside mowing, and roadway surface treatment were performed with positive results. The Road Paving Program utilizes traditional asphalt overlay in conjunction with a variety of other surface treatments such as micro-paving, chip seal, etc. to maintain roadways at a reasonable cost.

Fleet Maintenance

The Fleet Maintenance Division’s responsibilities include the repair and maintenance of Town vehicles. This includes a wide variety of vehicles ranging from general purpose cars and police cruisers to fire apparatus, heavy trucks, and construction equipment. Included within the scope of these services are the very substantial efforts of repair technicians during snow and ice events. The rough duty encountered by plow trucks during snow storms results in a need for quick and knowledgeable mechanical diagnosis and repair in order to keep trucks on the road.

The Division prepares bid specifications for all Physical Services vehicle purchases and reviews specifications for all other Departments. Other Division responsibilities include garage environmental compliance and maintenance of a computerized Fleet Data Program that tracks maintenance activities and associated costs, thereby allowing for prudent decision-making when considering new equipment purchases. In addition, Vehicle Maintenance staff periodically coordinates public sale of obsolete parts and equipment to ensure maximum salvage values.

Fleet Maintenance Division successes and accomplishments in the past year include:

- ~ Secured grant funding for the design and construction of a “fast-fill” compressed natural gas fueling station. Use of the alternative fuel for fleet vehicles will reduce both operating costs and vehicular emissions.
- ~ Completed reorganization of the Fleet Maintenance Division and operation, saving an estimated \$380,000 annually.

- ~ Successfully implemented a global positioning based automated vehicle location system within portions of the Town fleet.

Water Pollution Control Authority

The Water Pollution Control Authority (WPCA) is responsible for reviewing and approving sanitary sewer connections and expansions, and for assessing future needs of the system as it grows.

The WPCA levied assessments in the amount of \$119,540.79 in conjunction with their responsibility to recover the cost of sanitary sewer construction. Of this amount, \$64,309.50 was a result of new construction, with the balance due to expansion or connection of existing facilities. During the past fiscal year, 28 new connections were made to the sewer system.

Work continues on the Wastewater Treatment Plant renovation. C.H. Nickerson & Company, Inc. of Torrington, Connecticut was awarded the 30-month contract with the expected completion date being the Spring of 2010. Currently, all work is on time and within budget.



Sanitation Water Pollution Control Division

The Water Pollution Control Division provides the continuous collection and treatment of sanitary sewage generated from 100 miles of sanitary sewers and eight remote pumping stations. The system serves approximately 18,000 people within the Town of Glastonbury in compliance with State and Federal regulations. In addition, this division administers Sewer Use rates, ordinances and provides staff support to the Water Pollution Control Authority.

The following provides highlights of statistics for fiscal year 2008/2009:

- ~ 850.5 million gallons of wastewater were processed averaging 2.33 million gallons per day.
- ~ 3,410,000 gallons or 1,422,255 pounds of sludge were processed and disposed of, averaging 3,897 pounds per day.
- ~ 1,608,192 kilowatt hours of electricity was consumed at the Treatment Plant for the 24 hour per day operation, this is an average of 4,406 kilowatt hours per day.
- ~ Work continues on the Water Pollution Control Facility upgrade. The project is scheduled to be completed in the Spring of 2010.
- ~ A sewer inspection video camera system was purchased to enhance the sewer collection system maintenance program.

Refuse Disposal Division

The Refuse Disposal Division operates solid waste disposal, recycling facilities and administers permits for private collectors, ordinances and operating guidelines for waste disposal facility users.

The following provides an overview of statistical data for the Refuse Disposal operation.

- ~ 2,533 tons of Refuse was disposed of at the Transfer Station, 6284 tons of Bulky Waste Disposed at Bulky Waste Facility and 4,189 tons of materials was recycled.
- ~ 59.6% of solid Waste was recycled at our Transfer Station.
- ~ 452 residents utilized the Regional Household Hazardous Waste Collection Facility during the year.
- ~ Redesign of our recycling brochure and an updated web site were completed to enhance customer service.
- ~ Co hosted with Connecticut Resource Recovery Authority (CRRA) an Electronics Recycling Collection program at our Highway garage.
- ~ Received \$33,000 recycling rebate from CRRA.



Public Safety Police Department

The Glastonbury Police Department is a nationally and State accredited law enforcement agency committed to providing service to our community in a professional and sensitive manner. In 1986, the Department was the first law enforcement agency in Connecticut to be accredited. In 2007, it was the first to achieve its sixth re-accreditation.

The Department consists of 58 sworn officers and 16 civilian support personnel. Dispatching of all emergency services is handled by the Department's Communications Center which employs a state of the art simulcast radio system which was fully upgraded in 2006. Patrol officers maintain a visible police presence and 7 day/24 hour response capability to incidents occurring in Town. The primary mission of the Patrol Division is to identify, prevent and/or eliminate public safety problems. The Patrol officers are the primary contact between the Department and the public. They provide the critical first response to all crime, traffic and medical emergencies occurring throughout the Town. The nature of the work requires these officers to be highly trained and to flexibly readjust to handle a wide variety of complex situations.

While the Town's population has continued to grow, the workload of the Police Department has remained fairly constant for the past several years. During FY 08/09, the Department handled 20,665 calls for service.

The major elements of that caseload are broken down as follows:

Traffic	8,413
Services	8,992
Criminal	3,594

(continued on page 24)



(continued from page 23)

Among these cases, in a normal year, the Department's personnel will respond to about 1600 calls for medical assistance and 1000 calls involving animal related problems. The Town's crime rate has historically been one of the lowest in the State of Connecticut and the lowest in the Capital Region. While the Town's population has grown by over 30% since 1985, the rate of serious crime has declined by over 45% during the same period.

The Department places great emphasis on issues pertaining to youth. Full time School Resource Officers are assigned to the Middle and High Schools. In addition to enhancing school safety, the officers are in daily contact with youth. While they may occasionally take enforcement action, their primary focus is on preventing problems for youth and discouraging their involvement with crime and/or substance abuse.

Youth officers teach the DARE curriculum to all students in the sixth grade. Instruction on internet safety is presented to fifth grade students and anti-bullying programs are

implemented in the fourth grade and middle school. A youth officer is assigned part time to the FBI's Innocent Images Task Force. That officer's investigative efforts have been highly successful in arresting and prosecuting Internet pedophiles.

The Department maintains a high priority emphasis on traffic and drunk-driving enforcement. Consistent with its overall emphasis on prevention, the Department maintains a proactive posture in addressing the problems of underage drinking and substance abuse. This is accomplished by the continuing checks of establishments selling alcoholic beverage and tobacco to ensure compliance with laws governing sales to minors. High priority is maintained to enforcing the statutes involving possession by a minor, or hosting parties where alcohol is served to minors.

Utilizing both accident pattern analysis and complaints voiced by citizens, the Department's Traffic Unit maintains high emphasis on speed enforcement, distracted driving and traffic signal/sign violations.

Motorcycle patrol was introduced in 2009 to facilitate enforcement of speed and red light violations. In this past year to further enhance its capacity to reconstruct accident, conduct truck inspections and to undertake larger scale enforcement operations directed at drunk and aggressive driving the Department joined eight other communities in a regional traffic enforcement team.

Recognizing that computers and digital evidence are assuming an ever increasing role in crime and criminal investigation, the Police Department has trained two officers as forensic computer analysts. A forensic computer lab has been set up within the Police Department to provide the equipment, advanced forensic software, and a secure area for the analysts to receive, store and examine seized computers and digital equipment.

For the past three years the Police Department has lead efforts to develop a safer and more efficient design for police cruisers. That design is now being adopted by other police agencies across the State and nation. Equipment within the vehicle has been carefully placed so as not to impede airbag deployment. Consoles and computer equipment have been mounted so as to minimize the chances of officer injury in event the emergency vehicle is involved in a collision. Voice controls allow officers to direct all of the vehicle's electronics including radios, lights and sirens without taking their eyes off the road or their hands off the wheel. In 2009 the department worked with Havis-Shields to develop the completely new IdleRight technology that reduces gas consumption and the necessity of idling vehicles parked with their lights flashing at accident scenes or road construction.





Public Safety Volunteer Fire Department

The Glastonbury Fire Department is comprised of four fire stations and twenty pieces of fire apparatus that is maintained by a staff of 135 firefighters. These brave and dedicated individuals respond to a variety of alarms ranging from a serious fire or rescue incident to a simple need of assistance. Each year the department averages slightly less than 1,000 calls while completing an overall total of 7,000 hours of training both at the Connecticut State Fire Academy, as well as the Department's own modern day fire training facility located at the end of Nutmeg Lane.

When not answering alarms or attending training exercises, the Department is actively involved in a number of community events. The Department prides itself on promoting fire safety throughout the community. Whether it's putting on public demonstrations at the Annual Apple Harvest Festival, working with local retailers in promoting fire safety or providing a station tour to a Cub Scout pack, the Department is always there for the residence of Glastonbury. The month of October is very special to Fire Departments nationally. Fire Prevention week is always the first week of the month. Members get involved with going into the classrooms to teach young students about fire prevention, stop drop and roll and the use of the 911 system. For the older students the Department has participated in career day at the High School, as well as sponsors a Fire Cadet program, where teenagers between 14 and 18 are introduced to the fire service.

At this past year's Annual Awards Ceremony several firefighters were recognized for their years of service with the department, as well

as educational achievements. This was also the first year that the Department issued a Company citation in relation to incident that occurred earlier in the year. Those firefighters were honored for an extremely difficult motor vehicle extrication in which the lone occupant of the vehicle was trapped for almost two hours. Team work and perseverance among those involved resulted in a favorable outcome for the driver of the vehicle. In addition, The Glastonbury Exchange Club honored Acting Fire Chief Michael Thurz as this year's Firefighter of the Year.

Over the last year the Department focus has been on improving firefighter safety. A number of new and revised policies and procedures were enacted ranging from response protocol to personal protective equipment. The intent of these policies was to promote safety but more importantly ensure that everyone goes home after each incident. The Department also put into service its Incident Command vehicle, which is used by the on-call duty chief and serves as the command post at all major incidents.

Continuous training is a vital element to reinforce that firefighting does have its risk involved. For our new recruits training is essential prior to stepping on to the fire ground. A new recruit is required to attend 150 hours of rigorous training in order to be certified by the State of Connecticut as a firefighter. Trained to the National Fire Protection Association at the Firefighter One level, a new recruits training does not end there. They are required to receive training in hazardous material awareness and operations, incident command, as well as weapons of mass destruction. While

that is just the minimum, a number of our members are certified as Fire Officers, Fire Service Instructors, as well as operators of specialized pieces of equipment.

In response to the threats of possible attacks against the United States, Glastonbury became the leader of one of the State's Firefighting Task Force teams. Task Force 57 is part of the Statewide Fire/Rescue Disaster Plan. The task force consists of three Engine companies two Ladder companies one Rescue company and a Command Car from six surrounding communities that are readily available to deploy to any major incident throughout the State of Connecticut.

The Glastonbury Fire Department is always looking for new recruits that are up to the challenge and want to give back to their community. The Department invites you to visit our website at www.glastonburyfire.org or simply call the Fire Chief's office at 860-652-7555 to learn more about how you can be part of a great tradition.

Public Safety Civil Preparedness

The Office of Civil Preparedness (Emergency Management) coordinates all emergency activities in times of man-made or natural disasters for the Town of Glastonbury.

The Office is active in planning for manpower, equipment and community needs by updating information, regulations and training, as well as conducting checks of materials and equipment, including the Town warning sirens.

In disaster situations, the office updates information and instructions to Citizens via its disaster information telephone number 652-7578, as well as its radio station, WPHI600 at 1570 AM, which is heard in Glastonbury, 24 hours a day, seven days a week. This station also provides citizens with public safety information concerning traffic aid emergency situations.

It also maintains a state-of-the-art mobile telecommunications van that is equipped to function as a backup system should the Town's main system fail. This van can also be used in the field to assist with 'command and control' operations in major incident situations. This van contains the I-TAC I-CALL 800 MHz Interoperable System. The Glastonbury Emergency Management Director is considered as the founder of this Interoperable System by State Public Safety Officials.

The Civil Preparedness staff has trained in 'radiological monitoring' through the Connecticut Office of Emergency Management. It has radiological monitoring devices to meet peacetime homeland security concerns including the 'Hurricane' United



States Government hurricane-warning program with which it monitors major weather events.

The department is committed to continuing its involvement in Glastonbury Boy Scouting in Emergency Management projects to assist the development of youth, who are our future leaders.

Certain federally required elements of training must be completed by the Town of Glastonbury organizations that may have a role in preventing, preparing for, responding to, or recovering from an incident. The Emergency Management Senior Staff has completed its Federal Government requirement for National Incident Management System (NIMS).

The Town has maintained its status as a Federally Recognized "Storm Ready Town" by the National Weather Service, which is

the second one in Connecticut and the tenth in New England.

The Office of Civil Preparedness also

- ~ Maintained viable Civil Preparedness, Emergency Management & Homeland Security Program for the people of the Town of Glastonbury.
- ~ Maintained US Weather Alert Radios in all Glastonbury Schools as well as the Board of Education and the Bus Yard.
- ~ Provided normal and emergency communications to the Apple Fest and the Santa's Run.
- ~ Initiated use of WebEOC Crisis Information Management Software (CIMS) to manage crisis information and provide it to authorized users. WebEOC complies with the provisions and standards for the Incident Command System (ICS) as outlined in the National Incident Management System (NIMS). The majority of our members are trained in its use.



Public Safety Volunteer Ambulance

The Glastonbury Volunteer Ambulance Association, GVAA, was established in 1957. GVAA is committed to providing emergency ambulance service to the community 24 hours a day, 7 days a week, 52 weeks a year. More than 3000 calls have been logged for the year 2009. Currently 3 "Super Duty" ambulances operate from our facility at 2112 Main Street (located behind the police department). Each ambulance is staffed at an Intermediate level that provides basic emergency services and is able to provide intravenous fluid therapy, advanced airway management, cardiac defibrillation and oxygen therapy.

GVAA members are state certified EMT's of varying levels and receive monthly training to update skills and keep abreast of new and ever changing requirements in their field. Members come from Glastonbury and the surrounding towns volunteering both their time and expertise to those in need. Typically GVAA members work three 12-hour shifts a month. When not responding to calls, crew members are at the ambulance quarters attending to the equipment, building and supplies.

The ambulance service covers many town events, i.e.: the Summer Concert Series, Apple Fest, Santa's Run to name just a few. In addition we provide visits to area nursery schools for children to understand and feel comfortable with the inside of an ambulance. For the past few years we have worked with a program called "CT Chips" that provides fingerprints of young children, a video of them and a dental imprint, additionally, we participated in a "safety day" with an area business and another at a local church.

Members pride themselves on providing the highest quality, most compassionate, and dedicated emergency medical care to the residents and visitors of Glastonbury. First Aid and CPR training is offered to members of the community and surrounding towns.

The organization is always looking for dedicated members to be part of our team. To learn more about becoming a volunteer or about our organization, or to inquire about community based training please call (860)633-6554. You can also reach us at www.GVAA.org.

Administrative Services

The Administrative Services Department is responsible for the preparation of budgets, accounting and financial reporting, land records, property assessment, and the collection of taxes and sewer use fees. In addition, it oversees the acquisition of goods and services, insurance procurement, legal services, cash management and debt administration, voter registration management and coordination of computer services.

Board of Finance

The Board of Finance is a bipartisan Board which operates in partnership with the Town Council and the Board of Education. In its advisory role, the Board recommends an annual budget to the Town Council and recommends and/or authorizes transfers among and between accounts and funds during the fiscal year. By direct authority the Board establishes the annual mill rate of taxation after reviewing the final budget approved by the Town Council.

Financial Administration

This office coordinates the preparation of the operating and capital improvement budgets for the Town Manager; works with the Board of Finance to review financial reports and make recommendations as needed to the Town Manager; oversees the Town pension investments and coordinates actuarial valuations with Town actuaries; serves as staff liaison to the Insurance Advisory Committee in risk analysis and annual insurance renewals; coordinates procurement of goods and services and provides Information Technology services for all Town departments.

(continued on page 28)





(continued from page 27)

- ~ Maintained AAA designation with Standard's & Poor and Aa1 designation with Moody's Investment Services for the Town, which is based on the Town's financial condition.
- ~ Revised Capital Improvement Program criteria policy effective with the 2008/09 budget.
- ~ Issued "going green" initiative recommendations through Committee co-chaired by Purchasing Agent
- ~ Initiated Town server virtualization to lower energy costs and improve disaster recoverability
- ~ Received the Governmental Finance Officers Association (GFOA) Distinguished Budget Presentation Award for FY09/10.

Accounting

The Accounting Division is responsible for providing complete and accurate financial information, in the proper format, on a timely basis. This division prepares the year-end comprehensive annual financial report and processes employee payroll, payables, and receivables. The division is also responsible for managing the Town's investments to maximize interest earnings in all funds and performing internal audit procedures to help ensure that proper controls and procedures are being followed.

- ~ Received the Certificate of Excellence in Financial Reporting for the period ended June 30, 2008, awarded by the Government Finance Officers Association following an extensive review process.
- ~ Monitored cash balances and investment opportunities to ensure that Town funds were secure and prudently invested.
- ~ Achieved investment earnings in excess of

- budgeted estimates for fiscal year 2009.
- ~ Initiated implementation of new software module to deliver direct deposit advices to employees and purchase order to vendors electronically.

Property Assessment

The Property Assessment Division administers an ad valorem tax program in compliance with State Statutes. It compiles the annual Grand List of taxable and exempt property including the valuation of real estate, motor vehicles and business personal property.

- ~ The post-revaluation 2008 net taxable grand list totaled \$4,104,509,720, representing a .8% increase over the previous year.

Revenue Collection

The Collector of Revenue division is responsible for the timely billing, collection and financial reporting of tax and sewer revenues in accordance with State Statutes

and other applicable regulations and the collection and processing of all other Town revenues. Of additional importance to this division is maintaining an effective and cordial relationship with the general public while assisting them to understand the taxation procedure process.

- ~ Taxes and fees for the fiscal year 2008/2009 totaled \$115,218,972
- ~ Sewer charges and fees totaled \$ 2,035,202
- ~ Accomplished a tax collection rate of 99.3% on current levy.

Town Clerk

The Town Clerk's Office serves as the center for permanent public records for the residents of the community and their government and is responsible for maintaining many public records including, but more limited to, land records, vital statistics, military discharges, notary public registrations, liquor and burial permits, trade name certificates, meeting schedules, notices, agendas and minutes of the numerous boards and commissions,





Human Resources

administering elections and issuing various licenses such as dog, sporting, marriage and civil union. Most all of the functions of the office are governed by state statute and town charter, and the office is a major collector of revenue for the State of Connecticut as well as for the Town. In fiscal year 2008/2009, the office collected approximately \$1,411,366 in revenue for the State and \$868,124 for the Town consisting of funds relating to conveyance taxes, historic documents and farmland preservation funds, vital statistics, dog and sporting licenses, land record recordings and other miscellaneous items.

- ~ Received State grant approval in August 2008 and completed fourth phase of land records re-indexing preservation grant in June 2009 for an index timeframe of May 1869 to October 1952.
- ~ Installed new map cabinets and replaced vital records cabinet/shelving to comply with Federal and State laws.
- ~ Coordinated with Information Technology and existing official records vendor to complete the development and successful implementation of a program to provide web site Internet access to all town board and commission minutes and agenda filings from images already existing in Town Clerk server files in December 2008.
- ~ April 2009 applied for a \$10,000 Historic Preservation Grant from the State of Connecticut to continue the land records re-indexing project, which funds are to be awarded and work will continue on the project in fiscal year 2009/2010.
- Continued oversight of Ethics Commission training protocol with board and commission staff liaisons as well as periodic training status updates to Ethics commission.

The Human Resources Department is a full service department with the mission of administering a full range of human resources services and programs to the Town's workforce and retirees.

Some of the principal services and activities offered are: recruitment and testing, compensation and classification, employee training and development, labor relations and employee and retirees benefits. The department is also responsible for the Customer Service Center, located on the ground level of Town Hall. The center provides a range of services to residents, visitors and employees ranging from posting jobs to notarizing documents.

Some of the accomplishments for the year were as follows:

- ~ Conducted 19 recruitments and reviewed over 1,004 applications in an effort to select the best candidates to fill town positions.
- ~ Provided over 32 training sessions and employees' programs with an average of 35 employees per session.
- ~ Notarized approximately 99 documents and issued over 642 dump passes at the Customer Service Center.
- ~ Completed an analysis of and implemented recommended changes to all work stations in the town to ensure an ergonomically sound work environment, thus expecting a reduction in potential loss in work time.
- ~ Successfully implemented a High Deductible Health Plan (HDHP) to the town's medical benefits program and changed the dental plan from Anthem to Delta. This is part of an initiative in analyzing the health plan cost savings. These changes provided an estimated

savings of \$100,000.

~ Collected \$34,215.00 in dump pass fees.

Some of the training sessions served to enhance employees' knowledge, skills and abilities in job performance while other opportunities were to assist in keeping our employees healthy and help them to prepare for life in retirement.

Some of the opportunities offered were customer service training, team building, taking care of your back, How to stay healthy, life beyond employment and law updates. The information sessions provided to employees included preparing for retirement, how social security works, my investment opportunities and men and women health issues.



Town of Glastonbury

Financials

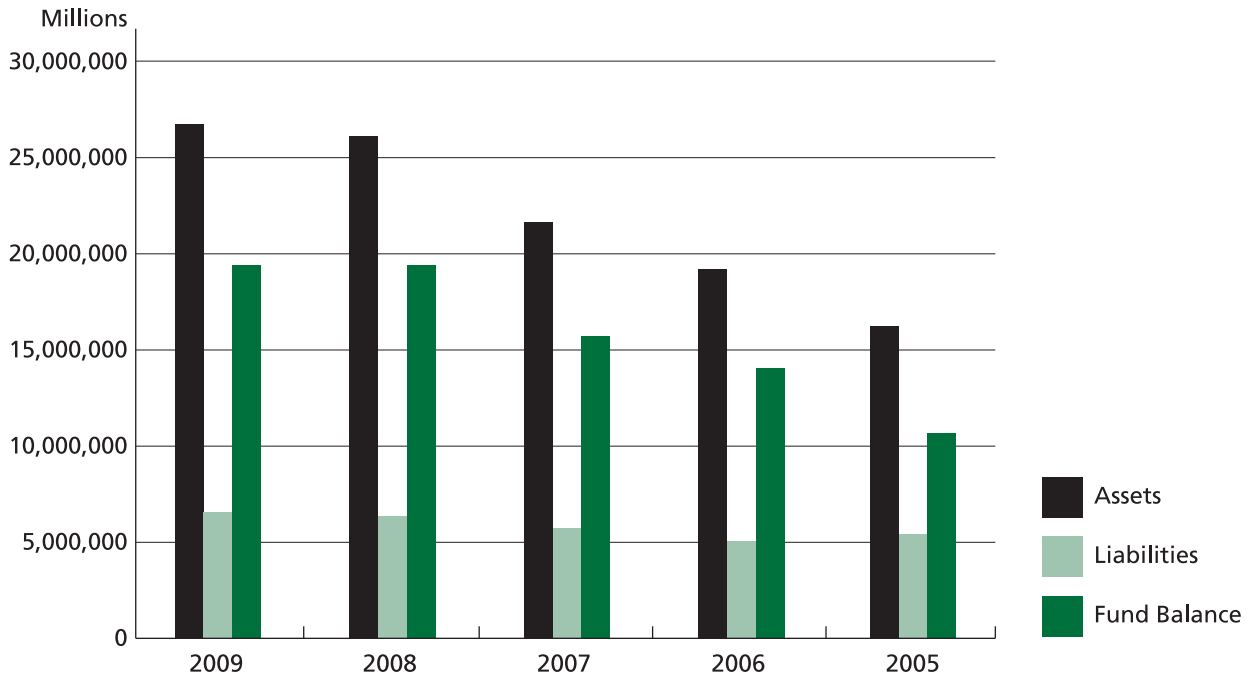
TOWN OF GLASTONBURY, CONNECTICUT
 STATEMENT OF REVENUES, EXPENDITURES AND CHANGES IN FUND BALANCE
 BUDGETARY BASIS – BUDGET AND ACTUAL – GENERAL FUND
 FOR THE YEAR ENDED JUNE 30, 2009

	Budgeted Amounts		Actual	Variance With Final Budget Positive (Negative)
	Original	Final		
Revenues:				
Property taxes	\$115,051,739	\$115,051,739	\$115,600,163	\$548,424
Licenses and permits	922,100	922,100	888,429	(33,671)
Intergovernmental	7,654,613	9,371,966	9,546,377	174,411
Charges for services	1,645,363	1,683,463	1,491,865	(191,598)
Investment income	800,000	800,000	841,580	41,580
Other revenue	1,961,301	1,961,301	3,674,308	1,713,007
Total revenues	128,035,116	129,790,569	132,042,722	2,252,153
Expenditures:				
Current:				
General government	2,714,273	2,742,088	2,551,501	190,587
Community development	1,854,468	1,884,219	1,863,995	20,224
Administrative services	5,638,549	5,577,717	5,266,616	311,101
Public safety	9,805,660	9,800,087	9,545,421	254,666
Physical services	5,800,908	6,125,908	5,889,862	236,046
Sanitation	2,449,743	2,532,124	2,401,026	131,098
Human services	2,498,268	2,590,778	2,452,058	138,720
Leisure/culture	4,818,915	4,888,720	4,679,520	209,200
Contingency	175,000	59,485	-	59,485
Education	81,977,373	83,724,376	83,715,229	9,147
Debt service	11,380,000	10,860,000	10,739,600	120,400
Total expenditures	129,113,157	130,785,502	129,104,828	1,680,674
Excess (Deficiency) of Revenues over Expenditures	(1,078,041)	(994,933)	2,937,894	3,932,827
Other Financing Sources (Uses):				
Transfers in	4,113,041	4,113,041	1,668,168	(2,444,873)
Transfers out	(3,035,000)	(4,550,545)	(4,550,545)	-
Total other financing sources (uses)	1,078,041	(437,504)	(2,882,377)	(2,444,873)
Net Change in Fund Balance	\$ -	\$(1,432,437)	55,517	\$1,487,954
Fund Balance at Beginning of Year			<u>19,570,120</u>	
Fund Balance at End of Year			<u><u>\$19,625,637</u></u>	

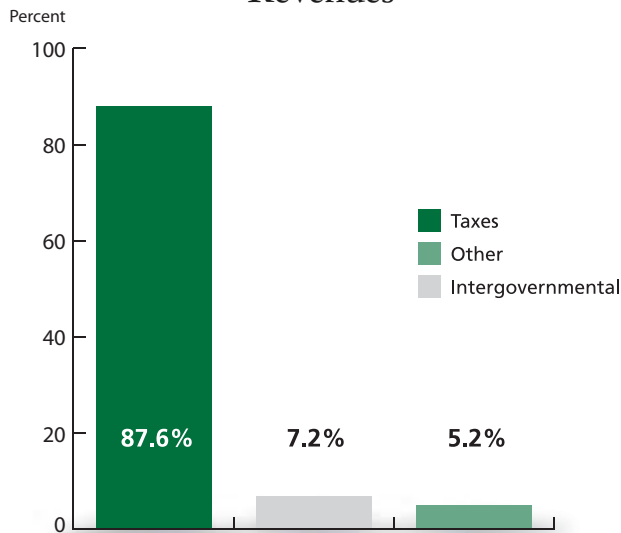
A complete copy of the financial report is available for review at Town Hall.



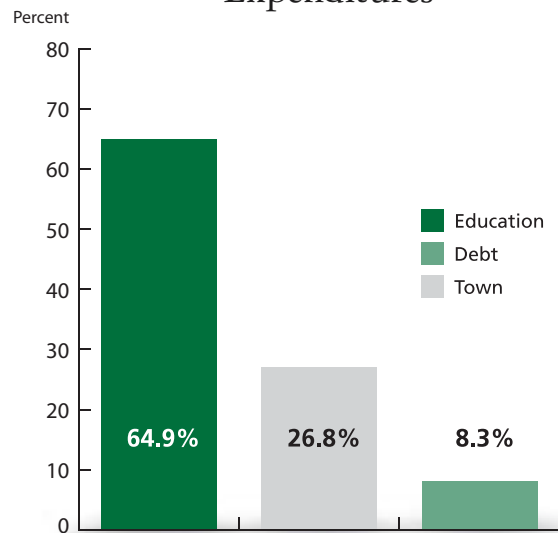
Assets, Liabilities, Fund Balance 2005 - 2009



Revenues



Expenditures





Town of Glastonbury

Financials

TOWN OF GLASTONBURY, CONNECTICUT
GENERAL FUND – BALANCE SHEET
JUNE 30, 2009 WITH COMPARATIVE TOTALS FOR 2008 AND 2007

	2009	2008	2007
ASSETS			
Cash and cash equivalents	21,970,317	24,549,246	\$20,019,604
Receivables:			
Property taxes	604,803	314,287	248,058
Other	497,215	738,204	910,802
Inventory	168,163	196,747	190,238
Due from other funds	2,800,000		
Other assets	22,213	34,253	13,908
Total Assets	26,062,711	25,832,737	\$21,382,610
LIABILITIES AND FUND BALANCE			
Liabilities:			
Accounts and other payables	2,741,213	2,616,541	\$2,550,835
Due to developers for escrow deposits	1,285,931	1,465,229	1,459,045
Due to others for escrow deposits	1,088,445	972,471	771,835
Deferred revenue	1,321,485	1,208,376	936,663
Total liabilities	6,437,074	6,262,617	5,718,378
Fund Balance:			
Reserved for encumbrances	106,365	189,332	128,135
Reserved for inventory	168,163	196,747	190,238
Reserved for capital outlay	169,388	146,868	69,500
Unreserved:			
Designated for insurance	275,000	275,000	275,000
Designated for subsequent year's expenditures	2,000,000	2,550,000	550,000
Designated for specific purposes		654,000	73,165
Undesignated	16,906,721	15,558,173	14,378,194
Total fund balance	19,625,637	19,570,120	15,664,232
Total Liabilities and Fund Balance	26,062,711	25,832,737	\$21,382,610

Town of Glastonbury

Town Officials – Prior to November 2009 Election

Board of Education

Richard C. Brown •
Lorraine Marchetti *
Kristi H. Vitelli, *Secretary*
Lisa M. Furbush
Jeremy Grieveson
Daniel J. Schnaidt
Pandora D. Wohler
James R. Zeller

Board of Finance

Diane L. Northrop
James R. McIntosh
Robert W. Jenkins
Jared Soper
Constantine Constantine
James Lynch

Board of Assessment Appeals

David Motyka
Robert D. Bowden
Dennis C. Cavanaugh
Bernard J. Herpst
Forbes Warren
Robert F. Vacchelli
Eileen M. Dobensky

Bldg. Board of Appeals/ Code Review Committee

Calvin J. Carini
James W. Dutton
Robert Kaelin
John S. Sardo
Graham Tyrol

Commission on Aging

William McGaw Jr.
Susanne Dock
Mary Abel
Nancy Kent
Ernest F. Reale
Eva Bowden
Janeen Dolan

Community Beautification Commission

W. Gilbert Wolf
Robert G. Shipman
Donald B. Reid
Linda DeGross
Della Winans
Lewis Middleton
David Flatterty

Conservation Commission

Kim McClain
Judy Harper
Dennis McInerney

James Bingham
Gerhard R. Schade
William Patrick
Helen D. Stern

Cox Cable Advisory Council

Patricia Darling
Christopher Fraleigh
Martin Loughlin
Richard C. Brown

Economic Development Commission

Gretchen Deans
Anthony L. Lazzaro, Jr.
Michael Botelho
David M. Hallowes
Raymond A. Dolan
Jay Sattler
Caren Kittredge

Ethics Commission

Alexandrina (Sandy) Sergio
Alan R. Spier
Nancy Thomas
Patrick Treacy
Angela Bull
Alternates:
Reginald L. Babcock

Fair Rent Commission

Lucille Jonah
Judith A. Stearns
Allen Karp
Andrea Broder
John C. Hilton
Stephen D. Oppenheim
David Evans

Fine Arts Commission

Doris O'Rourke
Helen Litwin
Dianne Hemlock Grinvalsky
Catherine Carlone
Heather Summers
Sandra MacGregor
Diane Lacy

Fire Commission

Gilbert D. Spencer
James W. Dutton
Rocco N. Fierravanti
Raymond A. Dolan
Arnold H. Higgins
Richard W. French, Jr.

Historic District Commission

Mary Lou Barrett

Nanette Navarro
Michael Stassen
Steven Snyder
Dr. Trish Manfredi
Alternates:
Courtney MacDonald
Barbara Theurkauf
Dorothy C. Cameron

Housing Code of Appeals

Nelson C. L. Brown
Kristine Brown
Dr. Michael F. Lepore
W. Michael Low

Human Relations Commission

Susan Sit
Joan Kemble
Patricia A. Darling
John C. Glezen
Virginia Hajek

Incorporators/ Free Academy

Richard Mihm
Patricia Saddle mire
John Waterhouse

Insurance Advisory Committee

Robert J. Hager •
Stephen J. Ludwig *
Ronald E. Palmer
David Hoopes
Thomas Mullaney
Patricia Shea-Lovell
Stephen L. Jones

Greater Hartford Tourism District

Katherine C. Kennedy

Personnel Appeals Board

Elizabeth A. (Betty) McLaughlin
Robert W. Rulevich
Glenda Rose
Richard Vitterelli
Keith Shaw

Public Buildings Commission

Lisbeth Becker
Charles I. Monzeglio
Stephen Shipman
David B. Cox
Suzanne S. Galvin
Liaisons:
Gus Constantine

Public Housing Authority

Donald H. Foberg
James F. Noonan
Richard H. Inman
Zelda Lessne
Judith Jaskulski

Recreation Commission

Allyson Ravosa
Michael C. Collins
Dennis Kerrigan
Brian Summers
Michael H. Clinton
H. James Boice

Safety Committee

Brian Ellis
Bernard J. Herpst
Theodore R. Paulding, Jr.
Lewis Lassow
Daniel B. Scott
Kathleen Kiernan-Pagani
Robert Hicks

Town Council

Susan Karp
Carol H. Ahlschlager
Whit C. Osgood
Kurt P. Cavanaugh
Marti Curtiss
Stewart "Chip" Beckett III
Barbara C. Wagner
Thomas J. Kehoe
Carolyn M. Treiss

Town Plan & Zoning Commission

Patricia V. Bussa
Patricia V. Low
Sharon Jagel
William Finn
Steven B. Ryan
Sharon H. Purtill
Alternates:
Raymond Hassett
Eric W. Schaefer
Keith S. Shaw

Water Pollution Control Authority

Bradley Northrop
John C. Gavin
Louis M. Accornero
Nils Carlson
William H. Habicht
Frank J. LaPorte III

Welles Turner Library Board

Elizabeth Fitzpatrick
Vanessa Kerrigan

Glenda Rose
Patricia Saddle mire
Laurie Paternoster
Diane Hemlock

Youth & Family Services Commission

Patrick Sullivan
Tamara Vrabely
Scott Heaney
Angela Phelan
Natalie Cook
Joanne R. Schneider
Tricia Dougherty
Susan Calabro
Non-Voting Members:
Father Kevin Cavanaugh
Sergeant Keith O'Brien

Zoning Board of Appeals

Michael T. Fitzpatrick
James T. Van Law Jr.
Sandra O'Leary
Jeanie G. Babineau
John C. Linderman
Alternates:
Charles L. Monaco
Anthony Gesnaldo
Jeannie S. Loughlin

Connecticut River Assembly

Richard Mihm

Agricultural Advisory Committee

Mario Accornero
Henry Rose
J. Baylis Earle
Louis Bussa
Richard Ferrari
Deborah McIntosh
Michael Longo

Great Pond Stewardship Committee

Gerhard R. Schade
Paul Kehoe
Dennis Kerrigan
Dennis McInerney
David Gumbart
Barbara C. Wagner
Chip Beckett
Marti Curtiss
Judy Harper
Tom Mocko

• Chairman
* Vice Chair

Town of Glastonbury

Town Officials – Following to November 2009 Election

Board of Education

Richard C. Brown •
Lorraine Marchetti *
Lisa M. Furbush, *Secretary*
Douglas C. Foyle
Jeremy Grieverson
Daniel J. Schnaidt
Pandora D. Wohler
James R. Zeller

Board of Finance

Diane L. Northrop •
James R. McIntosh *
Robert W. Jenkins
Jared Soper
Constantine Constantine
James Lynch

Board of Assessment Appeals

David Motycka •
Christopher M. Gallagher
Dennis C. Cavanaugh
Bernard J. Herpst
Forbes Warren
Michael C. Collins
Lawrence J. Byar

Bldg. Board of Appeals/ Code Review Committee

Luther Weeks
James W. Dutton
Robert Kaelin
Sandra Arenas
David Cordone

Commission on Aging

Denise Weeks
Susanne Dock
John DiSette
Nancy Kent
Ernest F. Reale
Eva Bowden
Janeen Dolan

Community Beautification Commission

W. Gilbert Wolf
Robert G. Shipman •
Donald B. Reid
Linda DeGross
Della Winans
Darlene Dumaine
David Flatteny

Conservation Commission

Kim McClain
Judy Harper •
Dennis McInerney
Robert Huestis

Gerhard R. Schade
William Patrick
Helen D. Stern

Cox Cable Advisory Council

Patricia Darling
Christopher Fraleigh
Martin Loughlin
(Bd. of Ed. Representative)

Economic Development Commission

Gretchen Deans
Anthony L. Lazzaro, Jr.
Michael Botelho
David M. Hallowes •
Raymond A. Dolan
Winona Zimmerlin
Caren Kittredge

Ethics Commission

Reginald L. Babcock
Alan R. Spier
Nancy Thomas
Judyth A. Heinrich
Angela Bull
Alternates:
Al Herzog

Fair Rent Commission

Lucille Jonah
Judith A. Stearns
Allen Karp
Andrea Broder
John C. Hilton
Stephen D. Oppenheim
David Evans •

Fine Arts Commission

Doris O'Rourke
Helen Litwin
Marion Terry Cordone
Betsy Hamilton
Heather Summers
Sandra MacGregor
Diane Lacy

Fire Commission

Gilbert D. Spencer
James W. Dutton
Rocco N. Fierravanti
Raymond A. Dolan
Arnold H. Higgins
Richard W. French, Jr.

Historic District Commission

Mary Lou Barrett
Barbara Theurkauf
Michael J. Stassen

Steven Snyder
Dr. Trish Manfredi
Alternates:
Courtney MacDonald
Brian Davis
Dr. Michael F. LePore

Housing Code of Appeals

Kristine Brown
W. Michael Low

Human Relations Commission

Susan Sir
Joan Kemble
Patricia A. Darling •
John C. Glezen
Virginia Hajek

Incorporators/ Free Academy

Richard Mihm
Patricia Saddle mire
John Waterhouse

Insurance Advisory Committee

Robert J. Hager •
Stephen J. Ludwig *
Ronald E. Palmer
David Hoopes
Thomas Mullaney
Tallison (Tally) Noble
Stephen L. Jones

Greater Hartford Tourism District

Katherine C. Kennedy

Personnel Appeals Board

Elizabeth "Betty" McLaughlin
Robert W. Rulevich
Kimberly Kupecky
Richard Vitterelli
Robert Zanolungo

Public Buildings Commission

Lisbeth Becker
Charles I. Monzeglio
Stephen Shipman
David B. Cox
Suzanne S. Galvin
Liaisons:
James R. Zeller -
(Bd. of Education)
Gus Constantine -
(Bd. of Finance)

Public Housing Authority

Donald H. Foberg

James F. Noonan
Richard H. Inman
Zelda Lessne
Judith Jaskulski (Tenant Rep.)

Recreation Commission

Allyson Ravosa
Michael C. Collins
Seth Jacoby
Brian Summers
Michael H. Clinton
H. James Boice *

Safety Committee

Brian Ellis
Bernard J. Herpst
Theodore R. Paulding, Jr.
Ronald E. Strine
Daniel B. Scott
Kathleen Kiernan-Pagani
Robert Hicks

Town Council

Susan Karp •
Carol H. Ahlschlager
Whit C. Osgood
Kurt P. Cavanaugh
Marti Curtiss
Stewart "Chip" Beckett III
Barbara C. Wagner
Timothy P. Coon
Carolyn M. Treiss

Town Plan & Zoning Commission

Patricia V. Bussa
Patricia V. Low
Sharon Jagel •
William Finn
Eric W. Schaefer
Sharon H. Purtil
Alternates:
Raymond Hasset
Lewis Lassow
Keith S. Shaw

Water Pollution Control Authority

Bradley Northrop
John C. Gavin
Louis M. Accornero
Nils Carlson
John A. Davis, Jr.
William H. Habicht
Frank J. Laporte III

Welles Turner Library Board

Elizabeth Fitzpatrick
Vanessa Kerrigan
Anthony Gesnaldo
Barbara Nebb

Patricia Shea-Lovell
Diane Hemlock

Youth & Family Services Commission

Robert Zanolungo
Tamara Vrabely
Scott Heaney
Diane Levsky
Angela Phelan
Natalie Cook
Joanne R. Schneider
Tricia Dougherty •
Susan Calabro
Non-Voting Members:
Lisa M. Furbush -
(Bd. of Education)
Lauren Gouse -
(Youth Advisory Board)
Sergeant Tim Viens -
(Glastonbury Police Dept.)

Zoning Board of Appeals

Michael T. Fitzpatrick
James T. Van Law, Jr.
Sandra O'Leary
Jeanie G. Babineau
John C. Linderman
Alternates:
Brian R. Smith
John H. Ferguson
Jeannie S. Loughlin

Connecticut River Assembly

Richard Mihm

Agricultural Advisory Committee

Mario Accornero
Henry Rose
J. Baylis Earle •
Louis Bussa
Richard Ferrari
Deborah McIntosh
Michael Longo

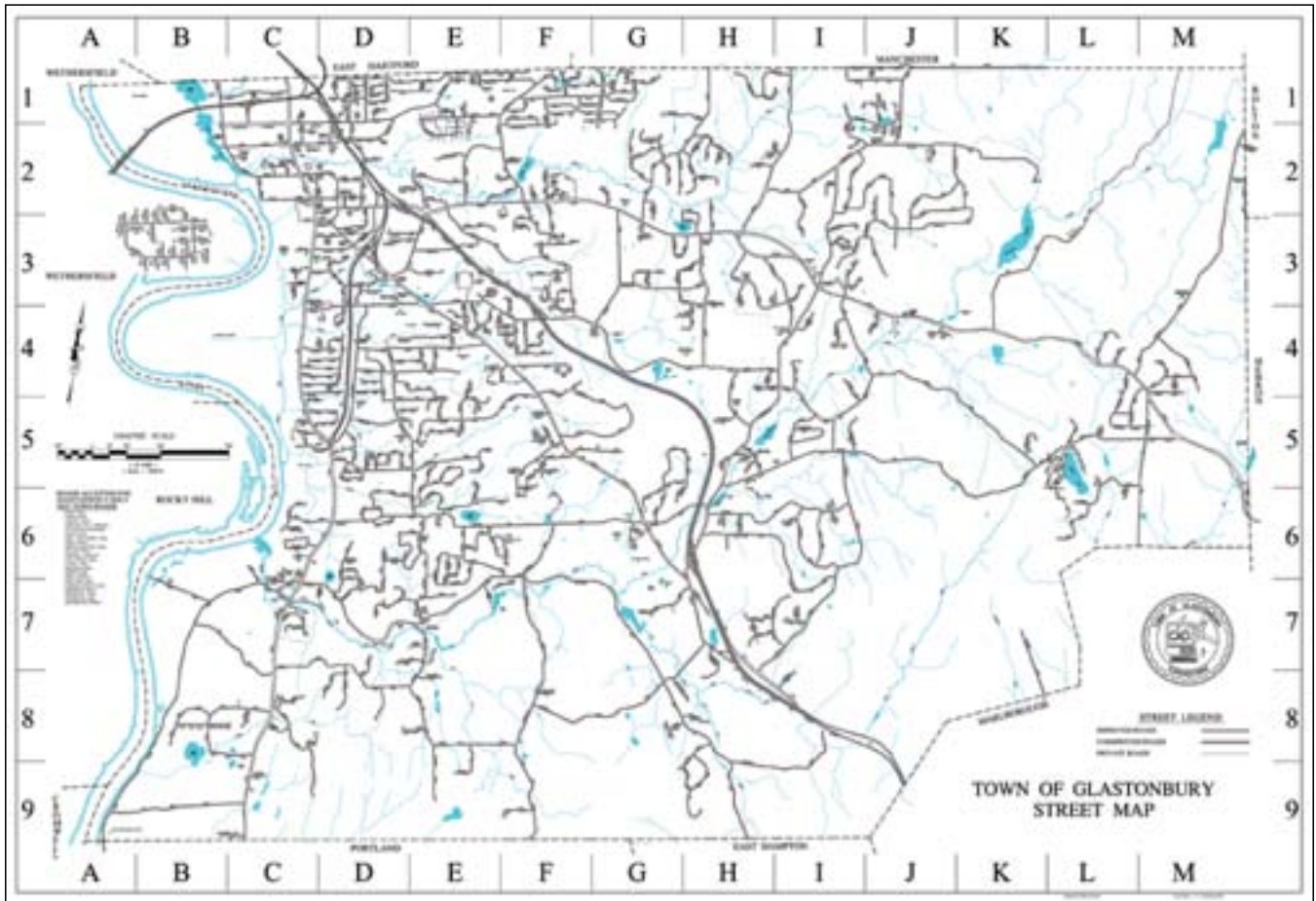
Great Pond Stewardship Committee

Gerhard R. Schade •
Paul Kehoe
Dennis McInerney
David Gumbart
Carol H. Ahlschlager
Marti Curtiss
Carolyn M. Treiss
Judy Harper
Tom Mocko
(Environmental Planner)

• Chairman
* Vice Chair

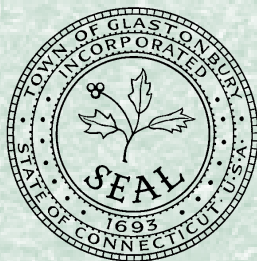
Town of Glastonbury

Town Map



Town of Glastonbury
 Town Hall / 2155 Main Street
 Glastonbury, CT 06033
 860-652-7710 / www.glastonbury-ct.gov

Annual Report Production Notes
 Concept + Design: MIK Advertising & Design
 Contributing Photographers: Jerry Dougherty, Kenith Leslie,
 Mary MacGregor, Wendy Mullaly
 Printing: Minuteman Press



TOWN OF GLASTONBURY
TOWN HALL ~ 2155 MAIN STREET ~ GLASTONBURY, CT 06033
860-652-7710 ~ WWW.GLASTONBURY-CT.GOV