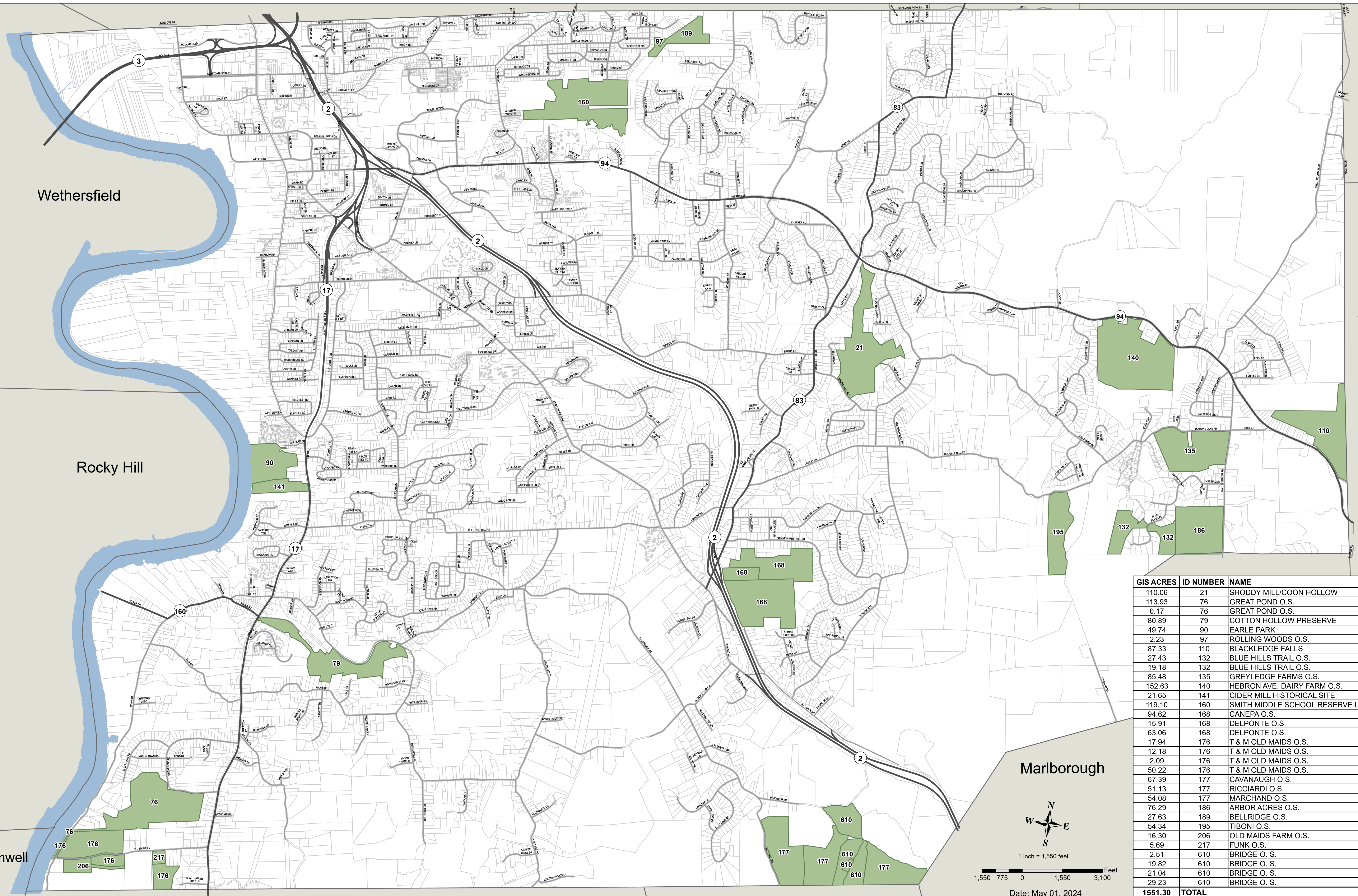
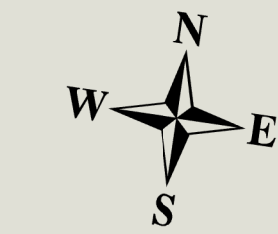


Town of Glastonbury - Open Space Parcels Selected for the Forestry Project

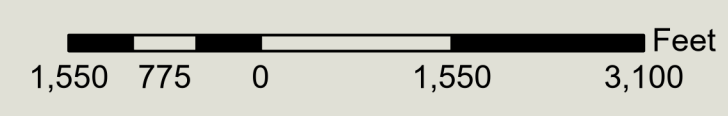


GIS ACRES	ID NUMBER	NAME
110.06	21	SHODDY MILL/COON HOLLOW
113.93	76	GREAT POND O.S.
0.17	76	GREAT POND O.S.
80.89	79	COTTON HOLLOW PRESERVE
49.74	90	EARLE PARK
2.23	97	ROLLING WOODS O.S.
87.33	110	BLACKLEDGE FALLS
27.43	132	BLUE HILLS TRAIL O.S.
19.18	132	BLUE HILLS TRAIL O.S.
85.48	135	GREYLEDGE FARMS O.S.
152.63	140	HEBRON AVE. DAIRY FARM O.S.
21.65	141	CIDER MILL HISTORICAL SITE
119.10	160	SMITH MIDDLE SCHOOL RESERVE LAND
94.62	168	CANEPA O.S.
15.91	168	DELPONTE O.S.
63.06	168	DELPONTE O.S.
17.94	176	T & M OLD MAIDS O.S.
12.18	176	T & M OLD MAIDS O.S.
2.09	176	T & M OLD MAIDS O.S.
50.22	176	T & M OLD MAIDS O.S.
67.39	177	CAVANAUGH O.S.
51.13	177	RICCIARDI O.S.
54.08	177	MARCHAND O.S.
76.29	186	ARBOR ACRES O.S.
27.63	189	BELLRIDGE O.S.
54.34	195	TIBONI O.S.
16.30	206	OLD MAIDS FARM O.S.
5.69	217	FUNK O.S.
2.51	610	BRIDGE O.S.
19.82	610	BRIDGE O.S.
21.04	610	BRIDGE O.S.
29.23	610	BRIDGE O.S.
1551.30	TOTAL	

Marlborough



1 inch = 1,550 feet



Date: May 01, 2024