



GLASTONBURY AT A GLANCE

AUGUST 2024

Upcoming Events

The list below is a SAMPLING of upcoming events. For a full list of programs with associated fees, details, and registration requirements, please review the [Town Events Calendar](#); [Parks & Recreation brochure](#); the [WTML website](#); and the [Sharing Tree Newsletter](#).

- [8/1 - Teen Doodle & Tranquility Workshop](#) - 6:30 PM @ WTML 2CF Studio
- [8/1 - Planet Protectors Summer Reading Party for Kids](#) - 2:30 PM @ WTML
- 8/2 and 8/29 - Technology Information Sessions with GHS Students - 1:00 PM @ the RCC
- [8/6, 8/13, 8/20, and 8/27 – Fiber Arts Friends Drop-in](#) – 12PM @ WTML
- 8/7 - Riverfront Concert Series - Performance by the Town Band
- [8/12 - Homegrown String Band in Concert \(Ella Waters Event Series\)](#) - 6:30 PM @ WTML
- 8/13 and 8/27 - Sunset Strolls through Riverfront Park - 6:00 PM departure from the RCC - Each walk will feature a different conversation topic. Bring water and bug spray!
- [8/17 - Household Hazardous Waste Collection](#) - 8:00 AM - 1:00 PM (Manchester Transfer Station) - Appointments required.
- [8/21 - Hill-Stead Museum and Garden Tour](#) - 1:30 PM departure from RCC
- 8/21 - Greater Glastonbury Veterans & Allies Coffeehouse - 9:00 AM @ the RCC (third Wednesday of every month)

National Night Out - August 6

On August 6, 2024 from 5:00 PM - 8:00 PM, the Glastonbury Police Department (GPD), along with Glastonbury Fire, EMS, and Parks and Recreation will host the annual National Night Out (NNO) event at 300 Welles Street. Community members are invited to join over 38 million neighbors across 18 thousand communities from all 50 states, U.S. territories, and military bases worldwide in celebrating this special event. NNO is an annual campaign that promotes strong police-community partnerships and neighborhood camaraderie to make our neighborhoods safer, more caring places to live and work. This year's event will feature bounce houses, food and ice cream, activities, and demonstrations from the GPD and Fire Department. We hope to see you there!

Senior Picnic at the Riverfront Community Center (RCC) - August 14

The annual summer picnic will be held at the RCC on Wednesday, August 14th at 9:15 AM! Start the day with breakfast and a Setback tournament followed by crafts, Bocce, a scavenger hunt, and a Pickleball clinic! Enjoy terrific music and a great meal catered by Tenth Hole Tavern! We'll also have a Kona Ice truck sponsored by National Healthcare. End the day with Bingo featuring some great prizes. Tickets can be purchased online, at the RCC, or at the Parks & Recreation Office. Tickets will also be sold the day of the picnic. [See Page 1 of the July/August Sharing Tree Newsletter](#) for details.

Annual Doggy Paddle - August 28

Bring your pup to this fun dog swim! Two swim waves will be held: 4:30 - 5:30 PM and 5:45 - 6:45 PM Cost is \$10/Dog (per Wave). Dogs must be licensed and up to date on all shots and please, no aggressive dogs. Dogs must remain off-leash in the swim area and humans are not allowed in the pool. [Click here to register through MyRec](#).

2024 Election News

Early Voting – New in CT – 7 days

Republican Primary: August 5 – 11, 2024

August 5, 7, 9, 10, 11: 10:00 AM - 6:00 PM

August 6 & 8: 8:00 AM - 8:00 PM

Your early voting location is: Glastonbury Town Hall Lower Level (2155 Main St.)

Republican Primary for US Senate: August 13, 2024

6:00 AM - 8:00 PM

Your regular voting locations are:

Smith Middle School

Hebron Avenue Elementary School

Gideon Welles School

Nayaug Elementary School

Academy Building

Hopewell Elementary School

Stay Informed!

View all election news and updates at www.glastonburyct.gov/vote.

To receive real-time email updates, visit glastonburyct.gov/enotify and subscribe or update your preferences to include the "Elections/Registrars of Voters" category under the News heading.

MLK Mural Painting and Dedication Event

Community members are invited to attend a dedication event of Glastonbury's MLK39 Mural Project on Saturday, September 14th from 2:00 - 4:00 PM at Glastonbury Town Hall*. This project is a collaborative effort of local residents, the Town of Glastonbury, CT-based artist Micaela Levesque, CT-based nonprofit RiseUp for Arts, Glastonbury MLK Community Initiative, Sustainable CT, and SunLife. Painting of the mural (design pictured at right) is slated to begin in early August on the exterior wall of Town Hall (side facing the lawn).

**In the event of inclement weather, the event will be held in the Academy building.*



Fall Program Registration for Parks, Recreation, and Senior/Social Services Starts August 13!

Keep an eye out for the Parks, Recreation, Senior & Social Services program brochure arriving in mailboxes the week of August 5th. Program information will also be available online beginning Tuesday, August 6th. Please note, the following programs have separate registration dates:

- Pool Passes and Open Gym Passes (ongoing)
- Santa's Run (Begins 10/16)
- Recreation & USA Swim Team (Begins on 9/4)
- Senior Center Programs (Begins August 21 (Residents); August 28 (Non-Residents))

Questions about Parks and Recreation programs can be directed to the Parks & Recreation office at **(860) 652-7679**. Questions about Senior Center programs can be directed to the Senior & Social Services office at **(860) 652-7638**.

International Overdose Awareness Events - August 2024

International Overdose Awareness Events are held annually to remember, without stigma, those who have lost their lives to overdose and to raise awareness of this global public health crisis. Glastonbury Youth & Family Services, Parks & Recreation, and the Glastonbury Community Action Partnership (GCAP) invite the community to the events below in recognition of this campaign. More details will be shared over coming weeks.



- **Tuesday, August 27 - NARCAN Training** - 4:00 PM @ Y&FS - Learn the signs of overdose and participate in a training to properly administer Narcan.
- **Wednesday, August 28 - Drug Take Back Program** - 4:00 - 7:00 PM on the lawn behind Town Hall. (Same time as the Farmers Market!) - Bring unused/unwanted medication for safe disposal.
- **Thursday, August 29 - Memorial Walk and Gathering** - 4:00 PM on the Academy Lawn - Visit various vendors then join the group walk to bring awareness to the opioid crisis.

HEARTSafe Community Designation - 2024-2027

Effective June 18, 2024, the Town of Glastonbury renewed its designation as a HEARTSafe community. Through this program, the Connecticut Department of Public Health and the American Heart Association recognized Glastonbury for its continued commitment to providing improved health and life saving measures for residents through cardiac response and care. The Town's training programs for CPR and AED use were among the efforts recognized with this recertification. The designation represents a three-year term through June of 2027. Please visit the [CT DPH website](#) to learn more about the HEARTSafe program.



Glastonbury Earns GFOA Distinguished Budget Award for FY2025 Budget

Glastonbury has again received the Distinguished Budget Award from the Government Finance Officers Association (GFOA) for the FY2024-2025 budget. Awards recognize budgets rated as proficient as a policy document, a financial plan, an operations guide, and a communications device. The award represents a significant achievement and reflects the commitment of Town staff to meeting the highest principles of governmental budgeting.

Seeking Volunteers to Teach Foreign Language and ASL

The Senior/Social Services Department is seeking volunteers to teach foreign languages and American Sign Language at the Senior Center. Interested parties should please contact Cassidy Nimmons, Volunteer Coordinator, at **(860) 652-7638** or Cassidy.nimmons@glastonbury-ct.gov.

Community Survey Re: Town-owned Forest Lands

This summer, the Town will be conducting a community survey to determine and prioritize the use of Town-owned land and forests throughout Glastonbury. This public survey will be a valuable component of the Town's forestry evaluation and inventory project, which is currently in progress and funded through a grant awarded by the CT DEEP Forestry Division. The survey is slated to open for citizen feedback in August 2024, and data collected through this process will help inform future Town actions and may support additional grant funding. Town staff will issue a press release once the survey is available for response. Please monitor the Town website and Facebook page for further details. If you would like to be notified directly when the survey is available, please email your request to Kathryn at marketing@glastonbury-ct.gov and note "Forestry Survey" in the subject line.

Update: Main St. Reconstruction Project

Over the next week or two, project work will continue along the east side of Main Street in the vicinity of Hebron Avenue. Brick work on both corners of Hebron Avenue is expected to be completed soon, as well as modifications to the end of the stone wall near the Center Green. Subsequent work will continue northward on the east side of Main Street toward New London Turnpike and will include construction of a new bus stop pad at the bus shelter in front of the business plaza at 2450 Main Street. The project team will also begin to reset the granite curbing on the east side of Main Street at New London Turnpike. To view all past and current updates for the Main Street Reconstruction project, please visit the Town website at www.glastonburyct.gov/mainstreet. If you'd like to receive email updates, subscribe to the [Town's eNotification system](#).

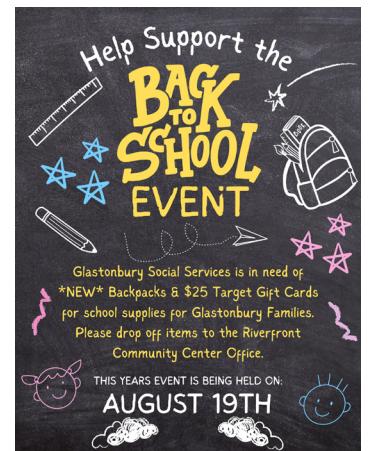
Cotton Hollow CLOSED for Public Safety Concerns

The Cotton Hollow Preserve is CLOSED to the public until further notice due to public safety concerns. Grange Pool will remain open with its standard operating hours and regulations. The Town will be monitoring the Cotton Hollow site to ensure community compliance with this closure. We appreciate your understanding and cooperation as we work to protect the Preserve and the safety of site visitors. [Read the full release here.](#)

SHOW YOUR SUPPORT!

Donations Wanted for 'Back to School' Collection

Glastonbury Senior & Social Services is seeking donations of NEW backpacks and \$25 Target gift cards for the annual Back to School collection program. Donations can be dropped off at the RCC [during regular business hours](#) between now and August 19, 2024 and will be distributed to eligible Glastonbury families. Please share this need with anyone who may be interested and thank you for supporting this effort!



Become a Parks & Recreation Partner!

Glastonbury Parks & Recreation is seeking partners to support special programming scheduled for the fall season! Partnership packages are available for individuals and businesses to support community events and they are designed to help you build relationships, increase brand visibility, promote healthy lifestyles, and more!

To view available opportunities, visit www.glastonburyct.gov/partner. If you would like to become a proud partner, or learn more about our packages, please email Glastonbury P&R staff at partner@glastonburyct.gov.