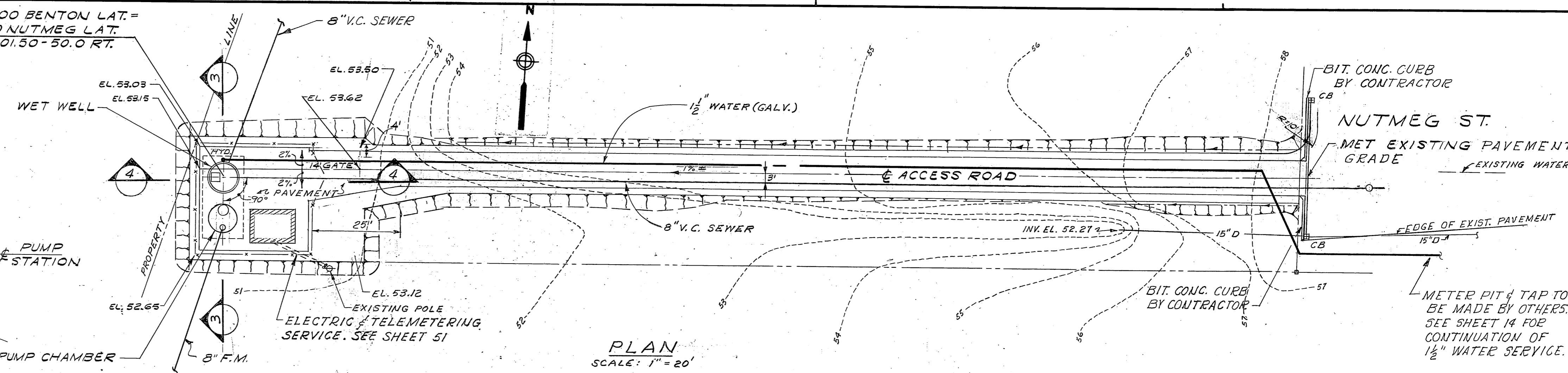
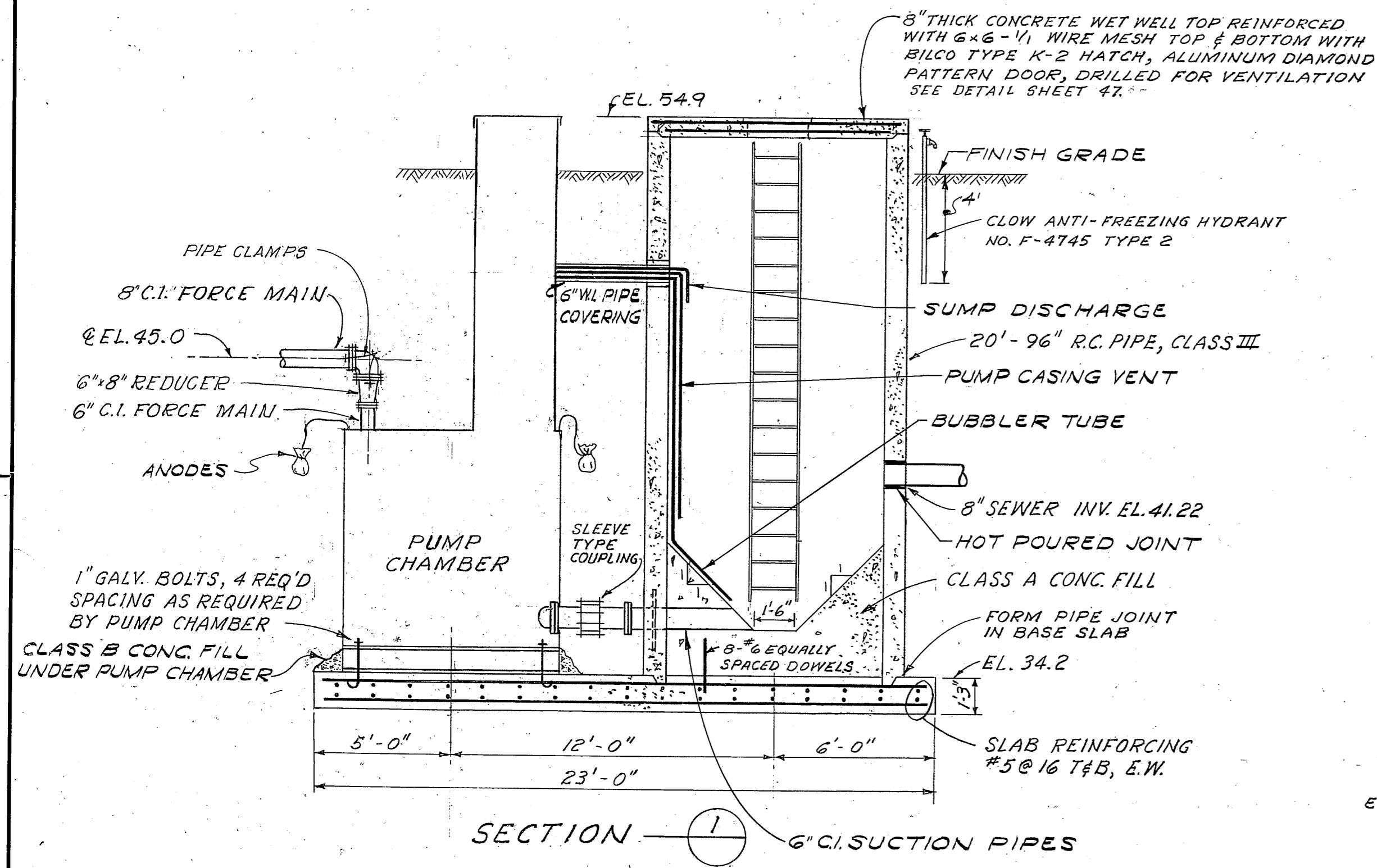


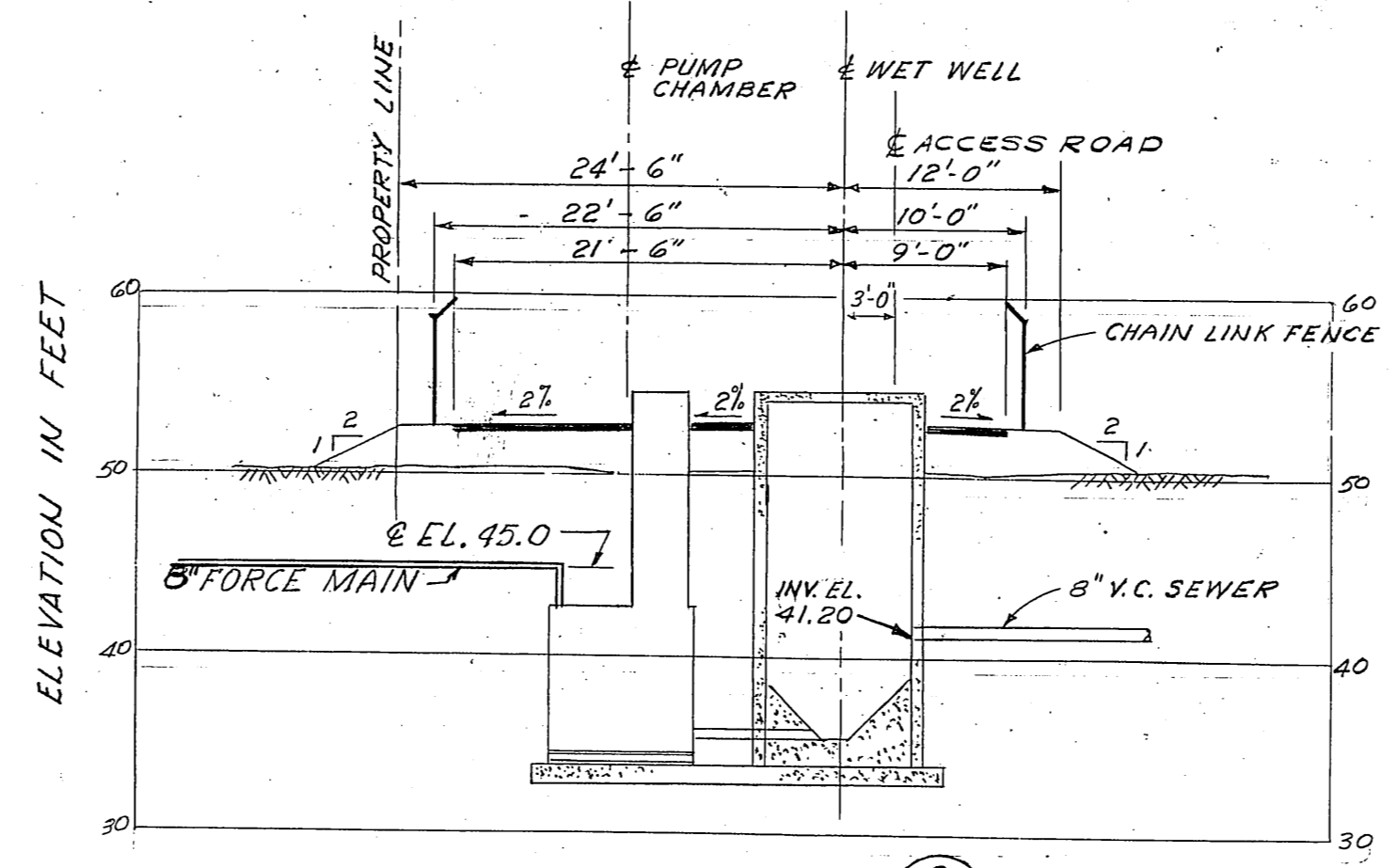
PLAN



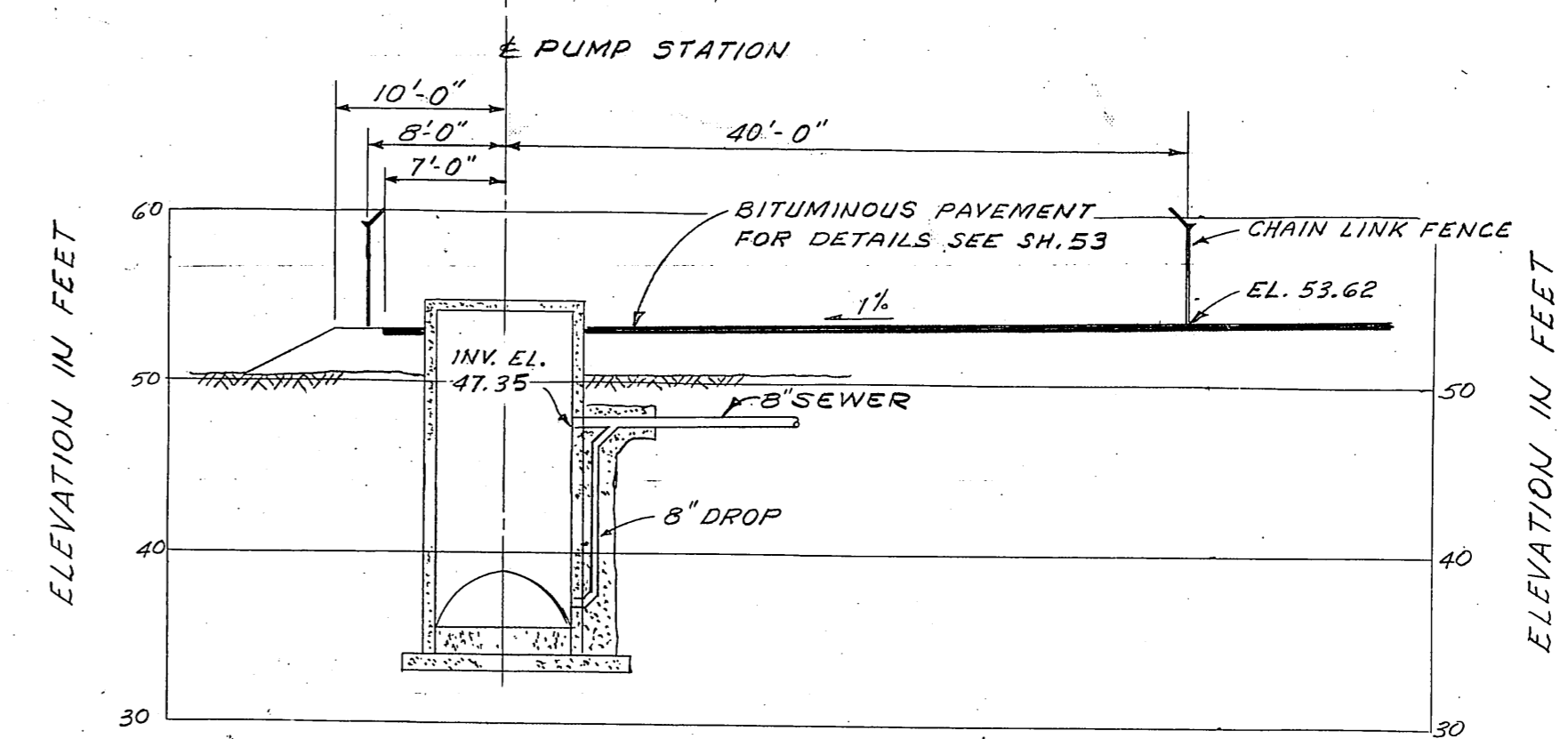
PLAN  
SCALE: 1" = 20'



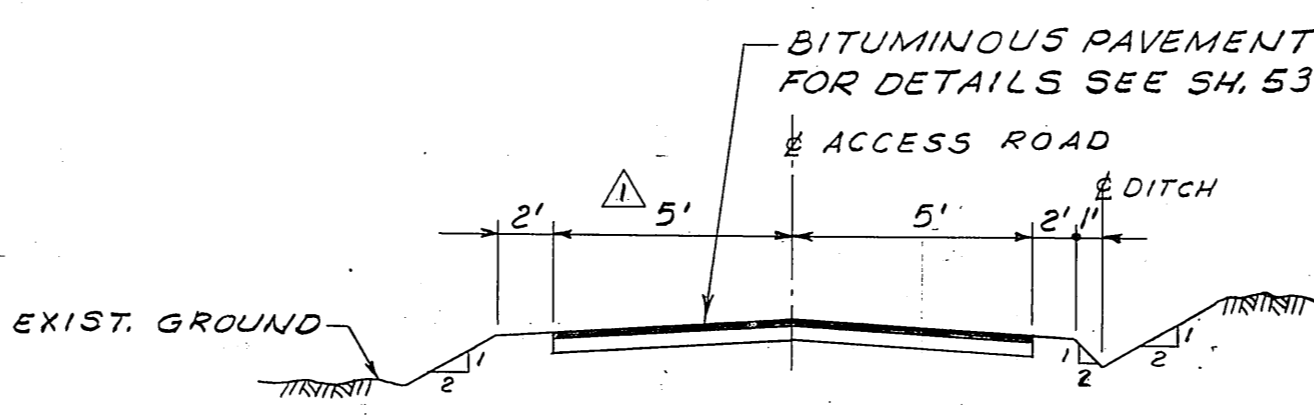
SECTION 1



SECTION 3



SECTION 4



TYPICAL ACCESS ROAD SECTION  
NOT TO SCALE

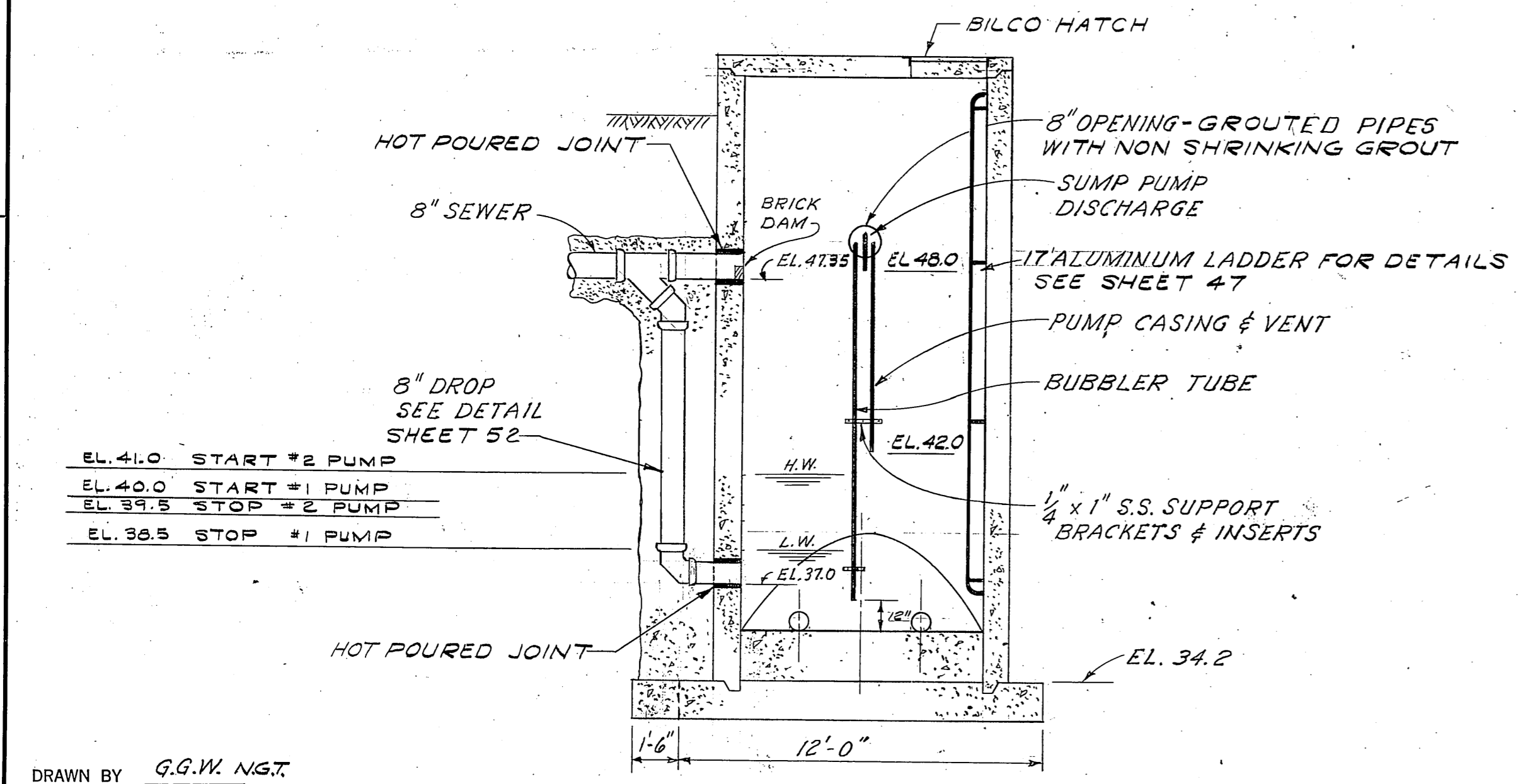
NOTE:  
1. GAS SERVICE TO GENERATOR BUILDING FURNISHED BY OTHERS.  
2. PUMP STARTERS FULL VOLTAGE MAGNETIC STARTERS.

**PUMP CHAMBER**

PUMP CHAMBER DIAMETER 8'-0"  
SUMP PUMP-1080 GPM AT 20' TOTAL HEAD.  
VALVES AND PIPING-6"

**PUMP DATA**

300 GPM AT 19 FT. TOTAL HEAD  
200 GPM AT 21.5 FT. TOTAL HEAD  
SHUTOFF HEAD NOT LESS THAN 29 FT. MAXIMUM SPEED 1150 R.P.M.  
PUMP WIRE TO WATER EFFICIENCY AT FULL SPEED NOT LESS THAN 60%.  
PUMPS TO PASS A 3" SPHERE



SECTION 2

DRAWN BY G.G.W. NGT.  
DEPT. CHECK RDC  
PROJ. CHECK RDC

**RECORD DRAWING**

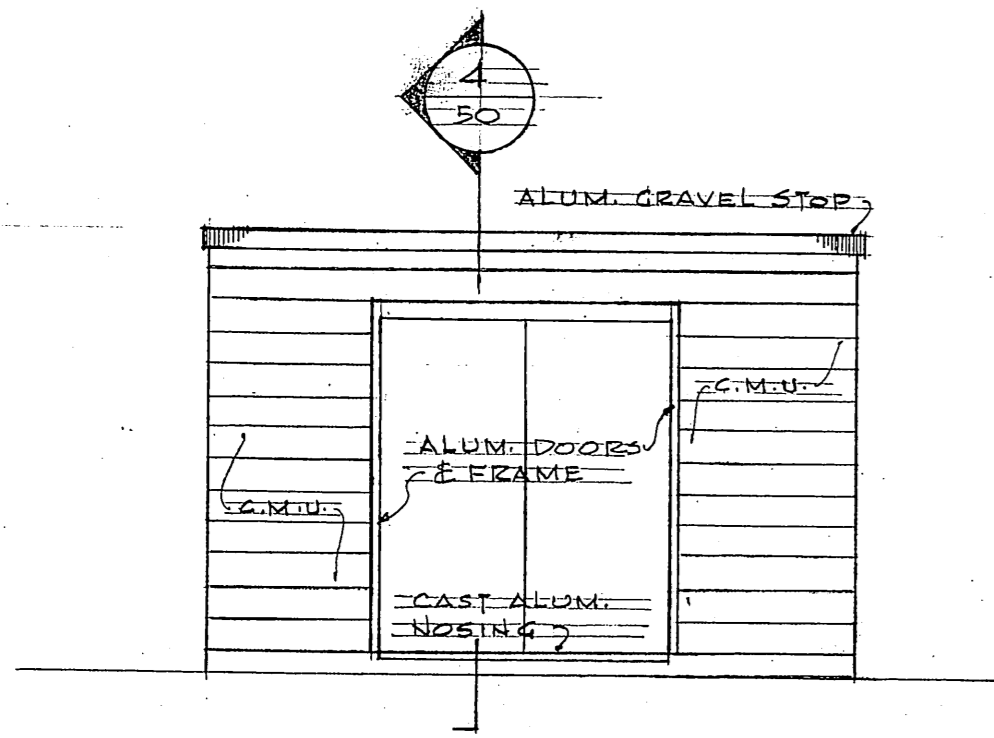
9/17/60	E.K.-R.W.	H.E.K.	REVISE FOR RECORD
7-6-66	R.J.F.	H.P.T.	CHANGE 10' TO 5'
7-6-66	R.J.F.	H.P.T.	DIM. CHANGE 2 1/2" TO 3"
REVISION	MADE BY	CHECKED BY	DESCRIPTION
SCALE 1/4" = 1'-0" OR AS SHOWN.			DATE MAY, 1966
UNLESS OTHERWISE NOTED OR CHANGED BY REPRODUCTION			
APPROVED			
FOR METCALF & EDDY, ENGINEERS		DATE 5/16/66	
REG. PROF. ENGR. CONN. NO. 3410			

TOWN OF GLASTONBURY, CONNECTICUT  
BOARD OF SEWER COMMISSIONERS  
HUBBARD BROOK AREA SEWERS

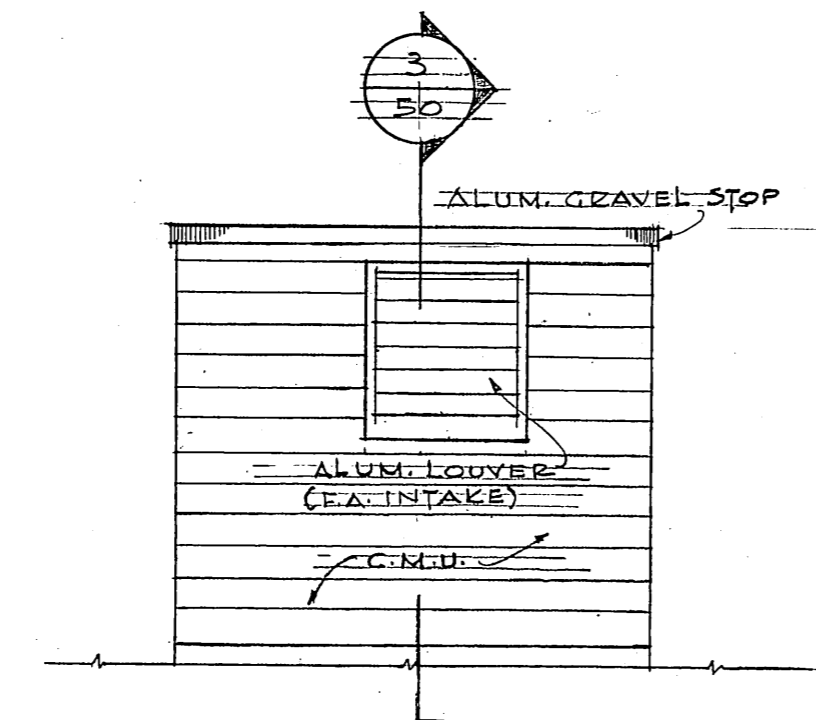
**NUTMEG PUMPING STATION - PART I**

**M&E** METCALF & EDDY, ENGINEERS  
BOSTON - NEW YORK - PALO ALTO.

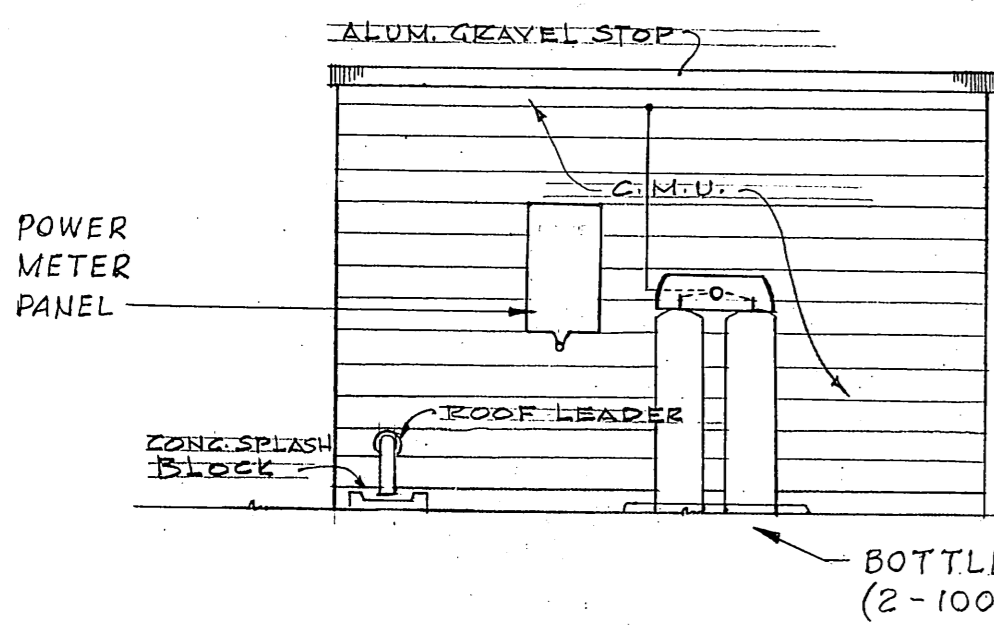
H 45179  
1



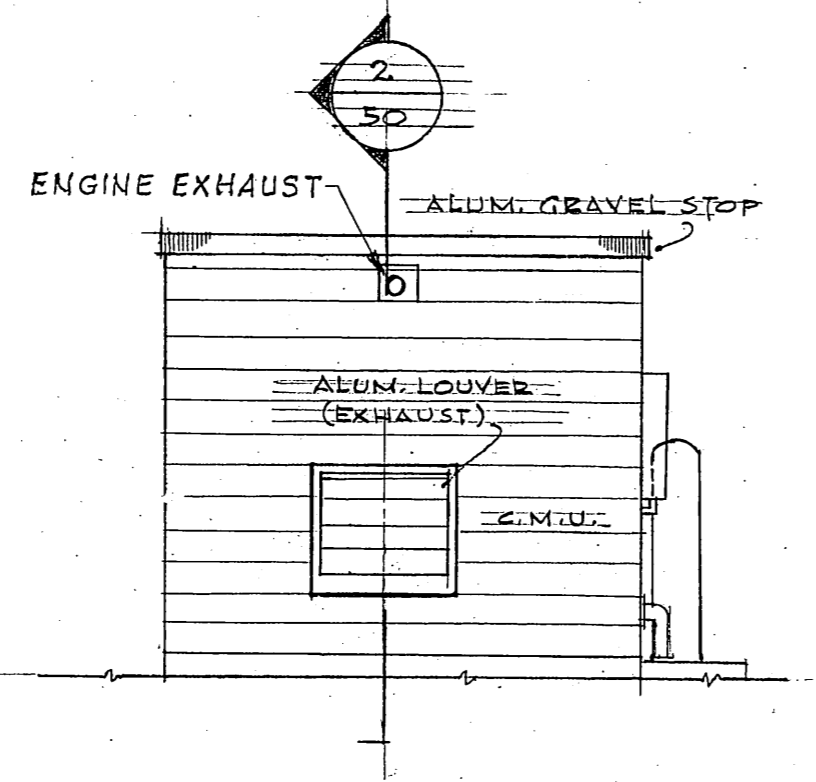
NORTH ELEVATION



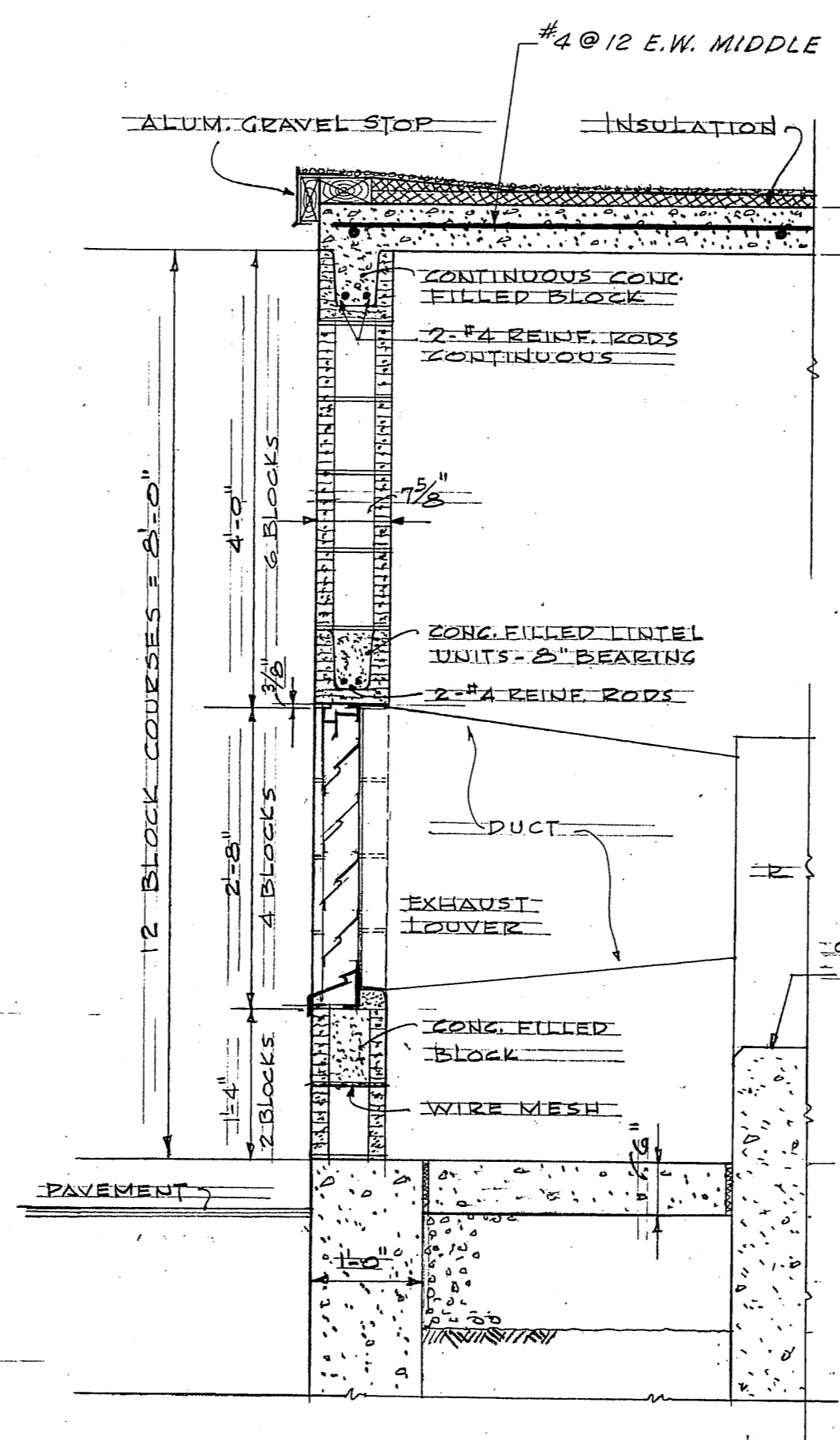
EAST ELEVATION



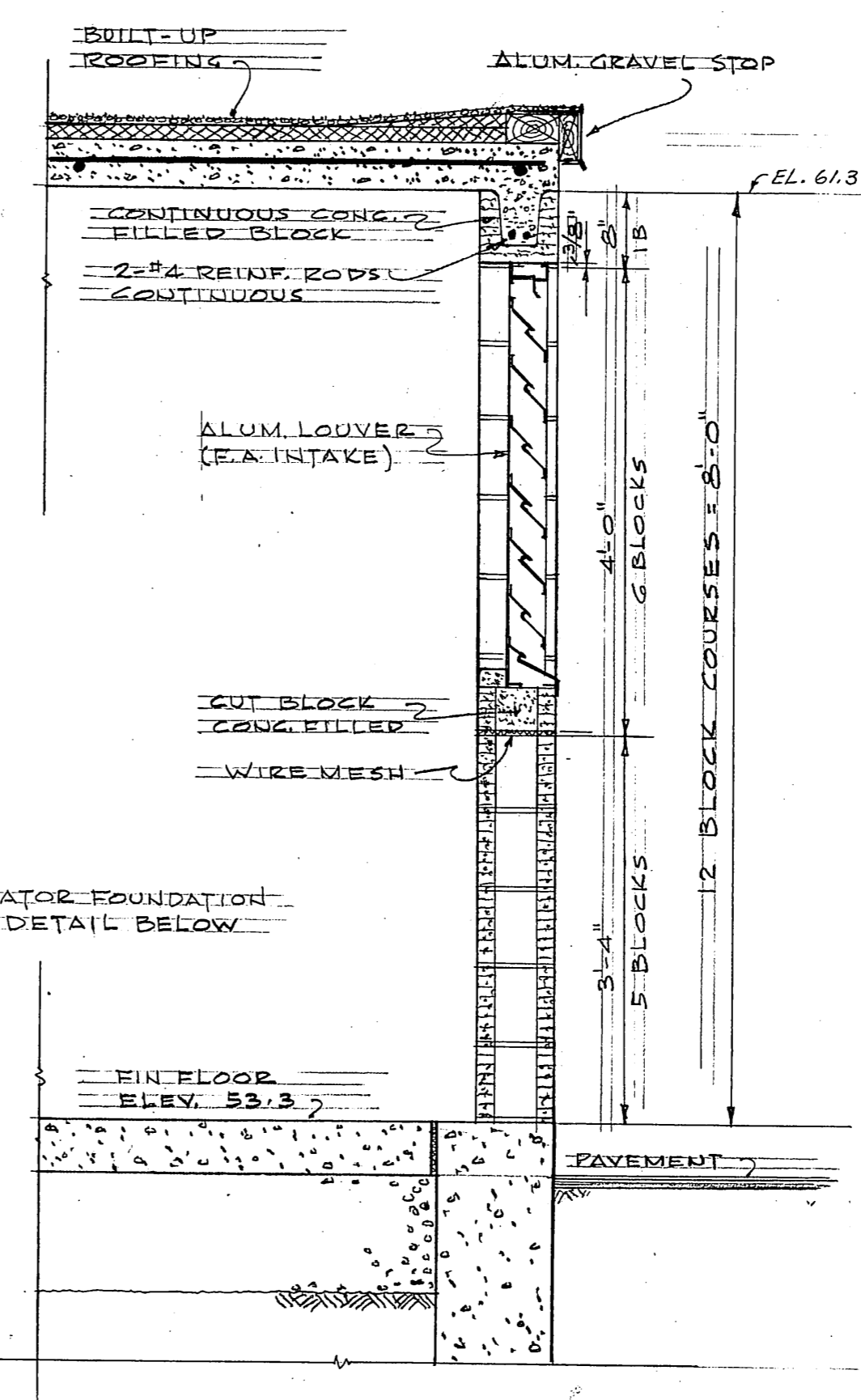
SOUTH ELEVATION



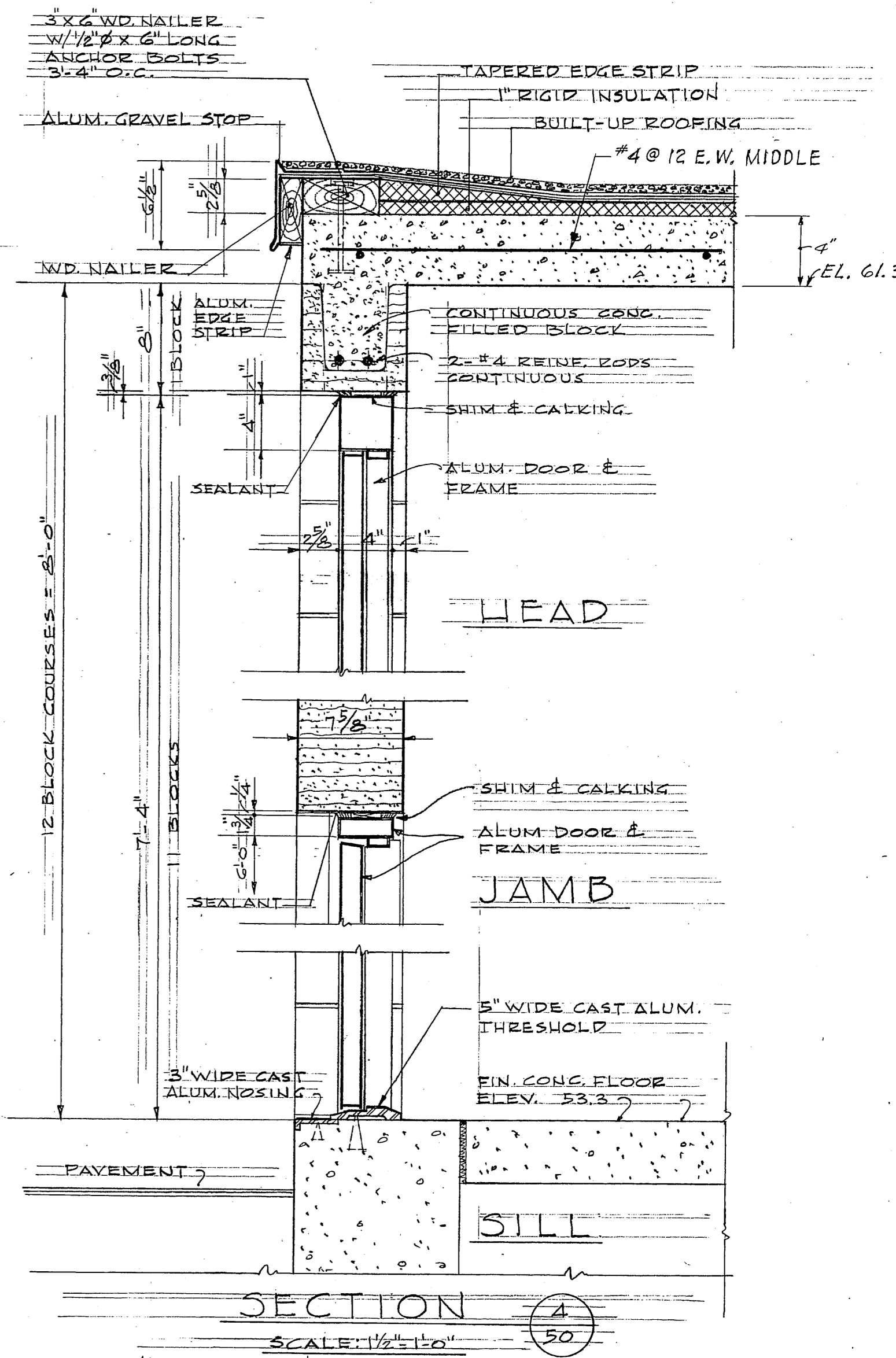
WEST ELEVATION



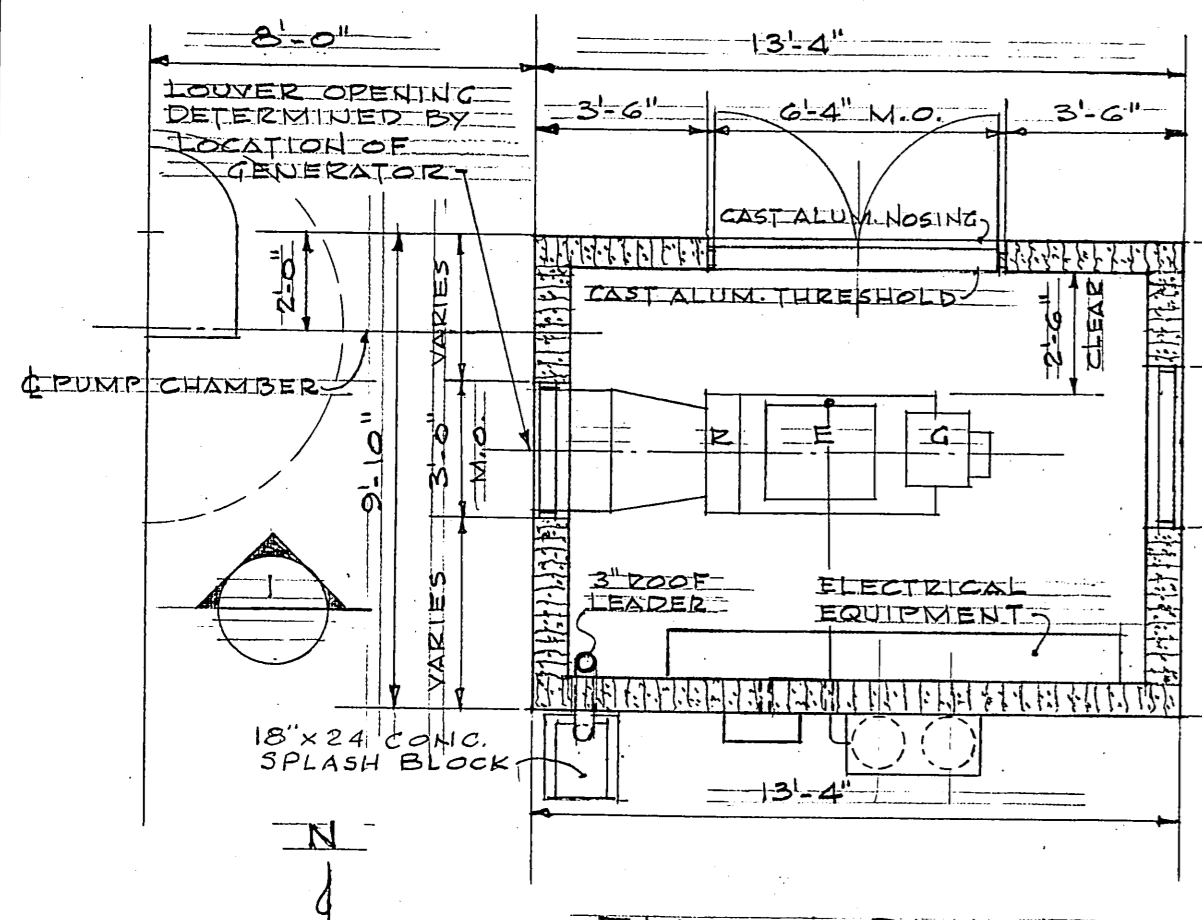
SECTION 2



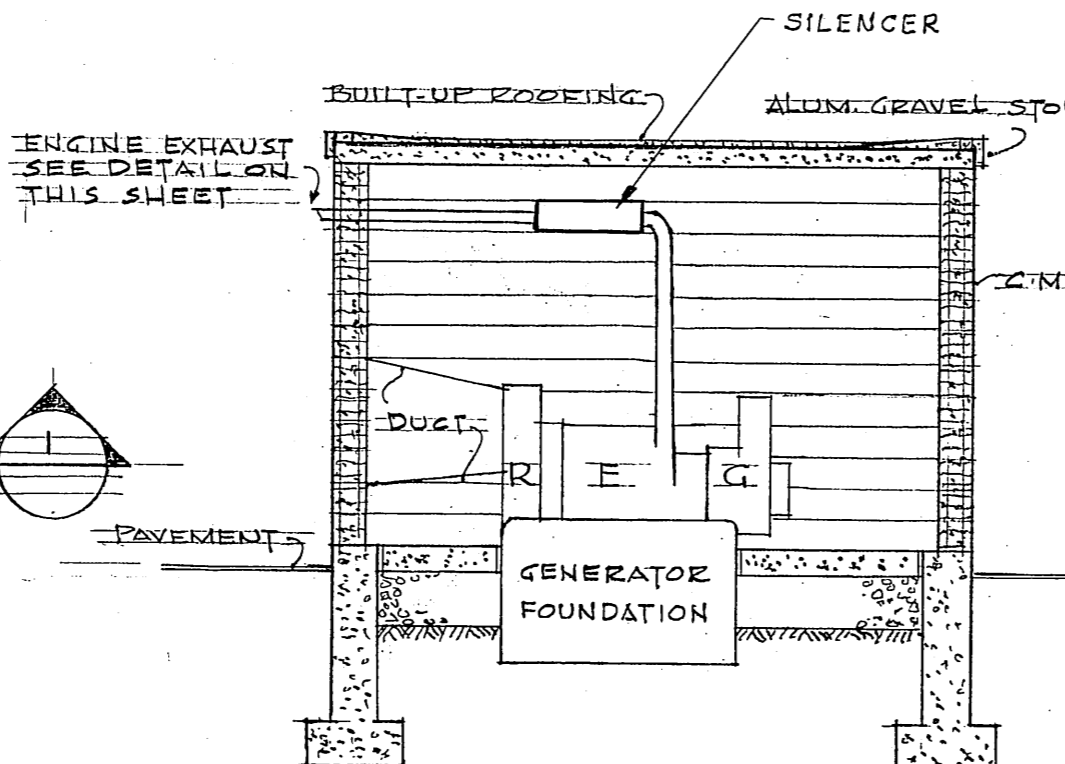
SECTION 3



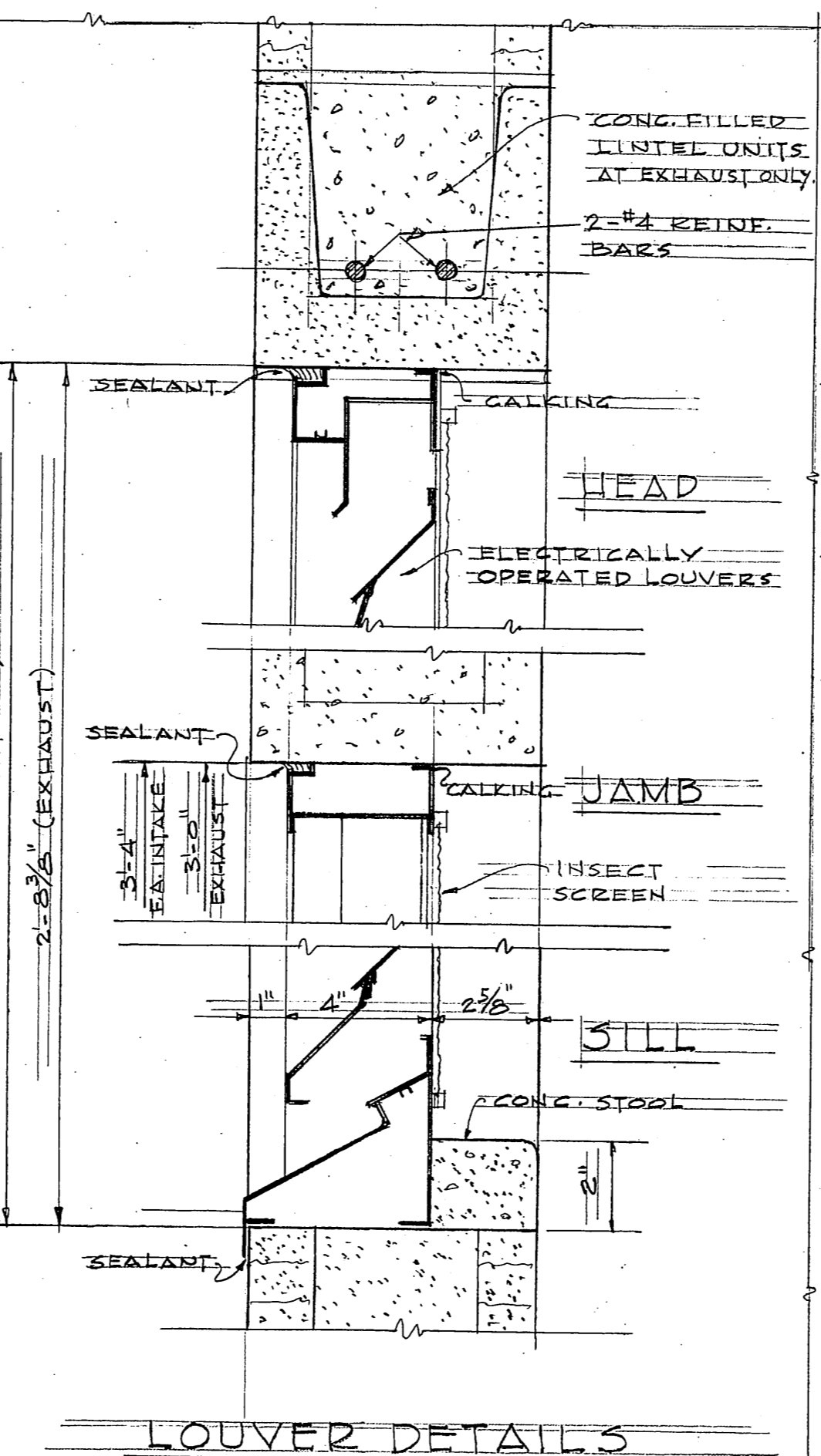
SECTION 4



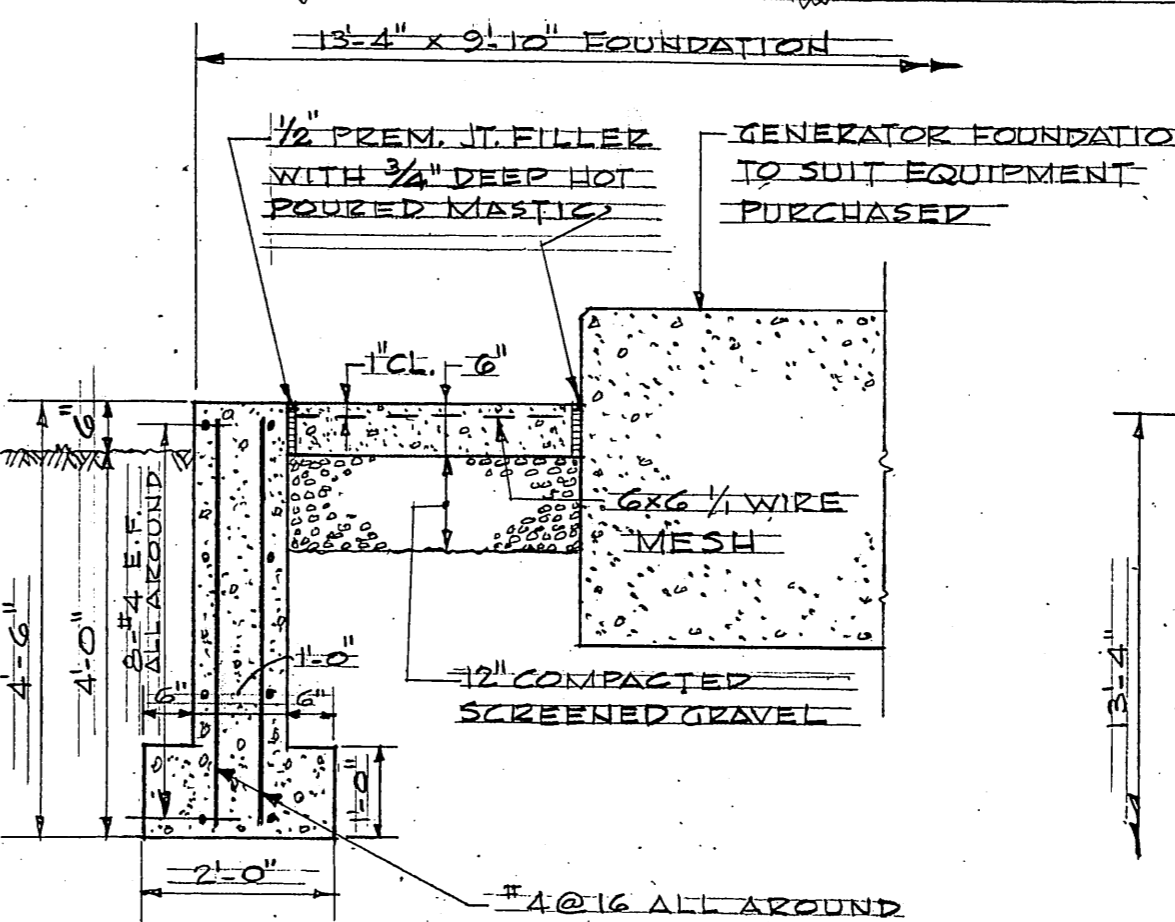
FLOOR PLAN



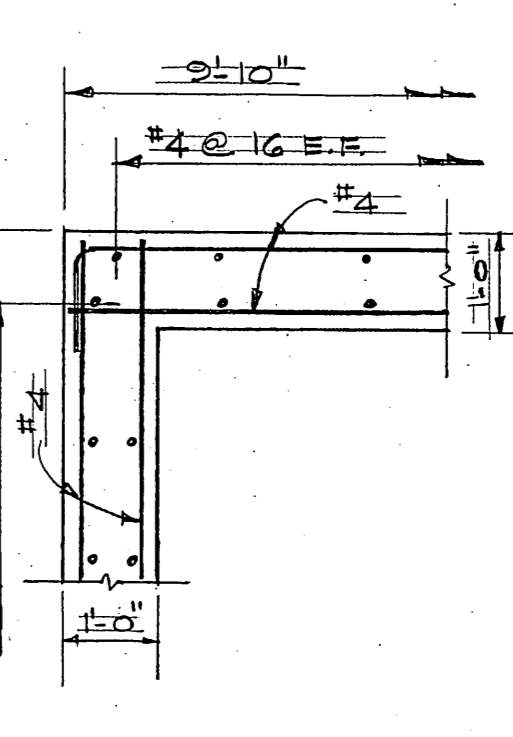
SECTION 1



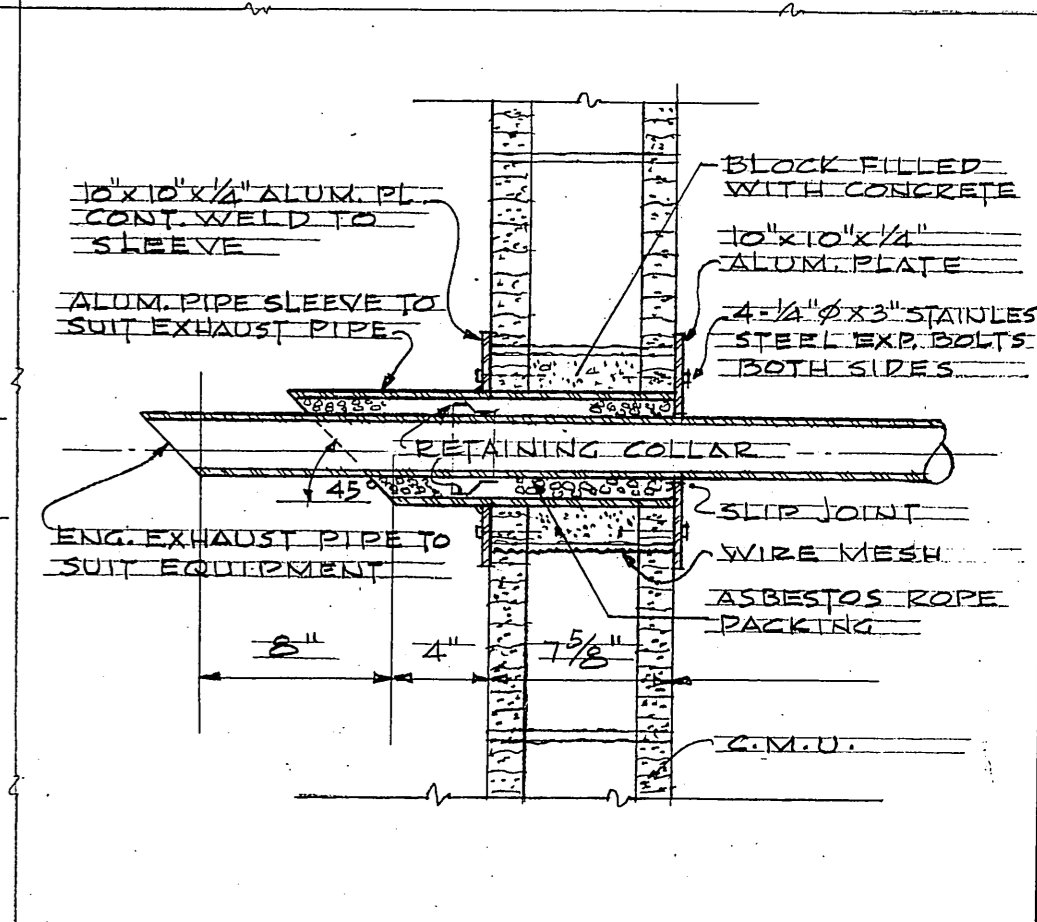
LOUVER DETAILS



FOUNDATION & FLOOR DETAIL



CORNER DETAIL



ENGINE EXHAUST PIPE DETAIL

PLANS, SECTION & ELEVATIONS

SCALE: 1/4" = 1'-0"

FOUNDATION DETAILS

SCALE: 1/2" = 1'-0"

RECORD DRAWING

TOWN OF GLASTONBURY, CONNECTICUT  
BOARD OF SEWER COMMISSIONERS  
HUBBARD BROOK AREA SEWERS

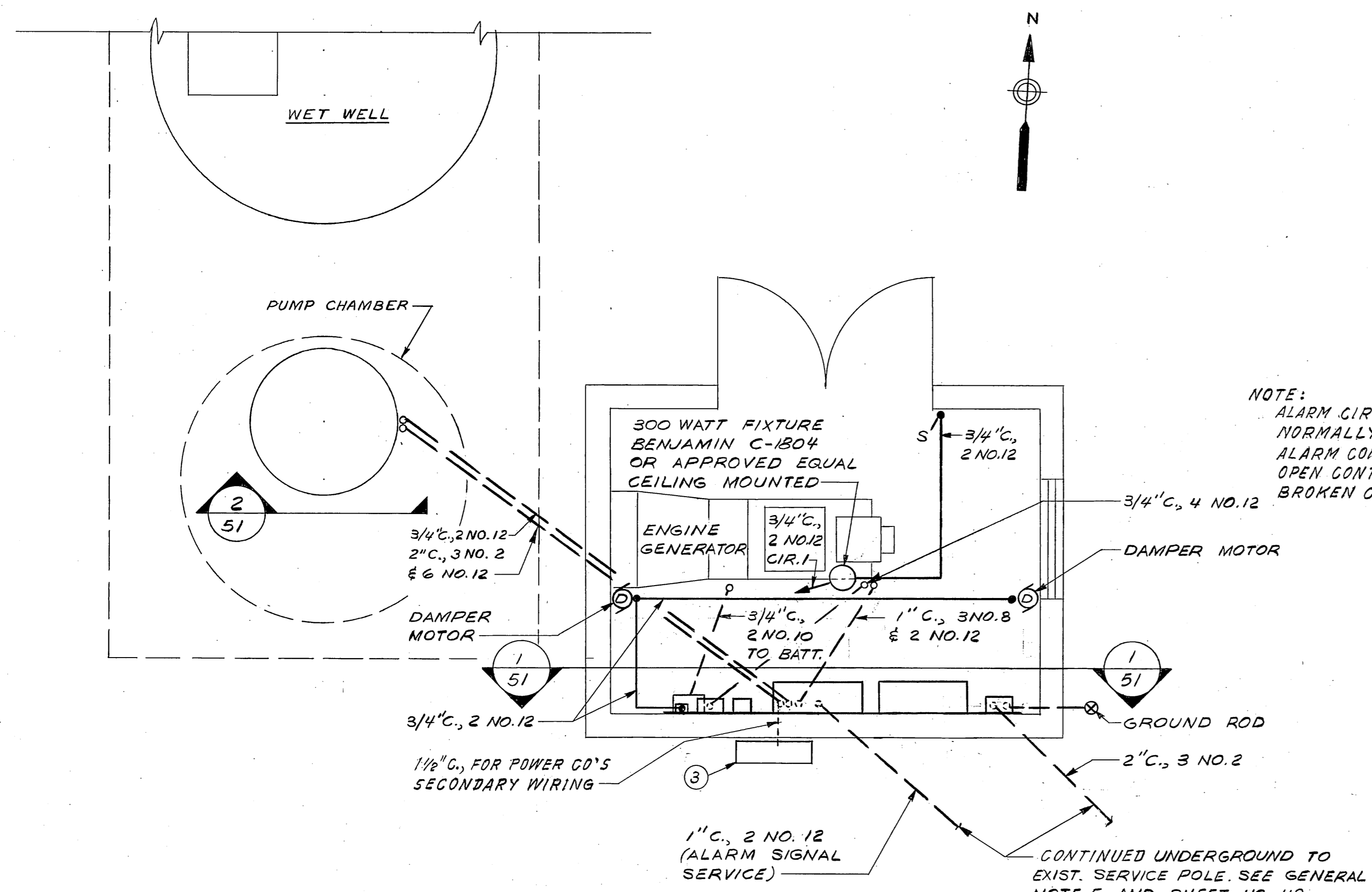
NUTMEG PUMPING STATION PART II

DRAWN BY OLV  
DEPT. CHECK J.P.B.  
PROJ. CHECK E.C.C.

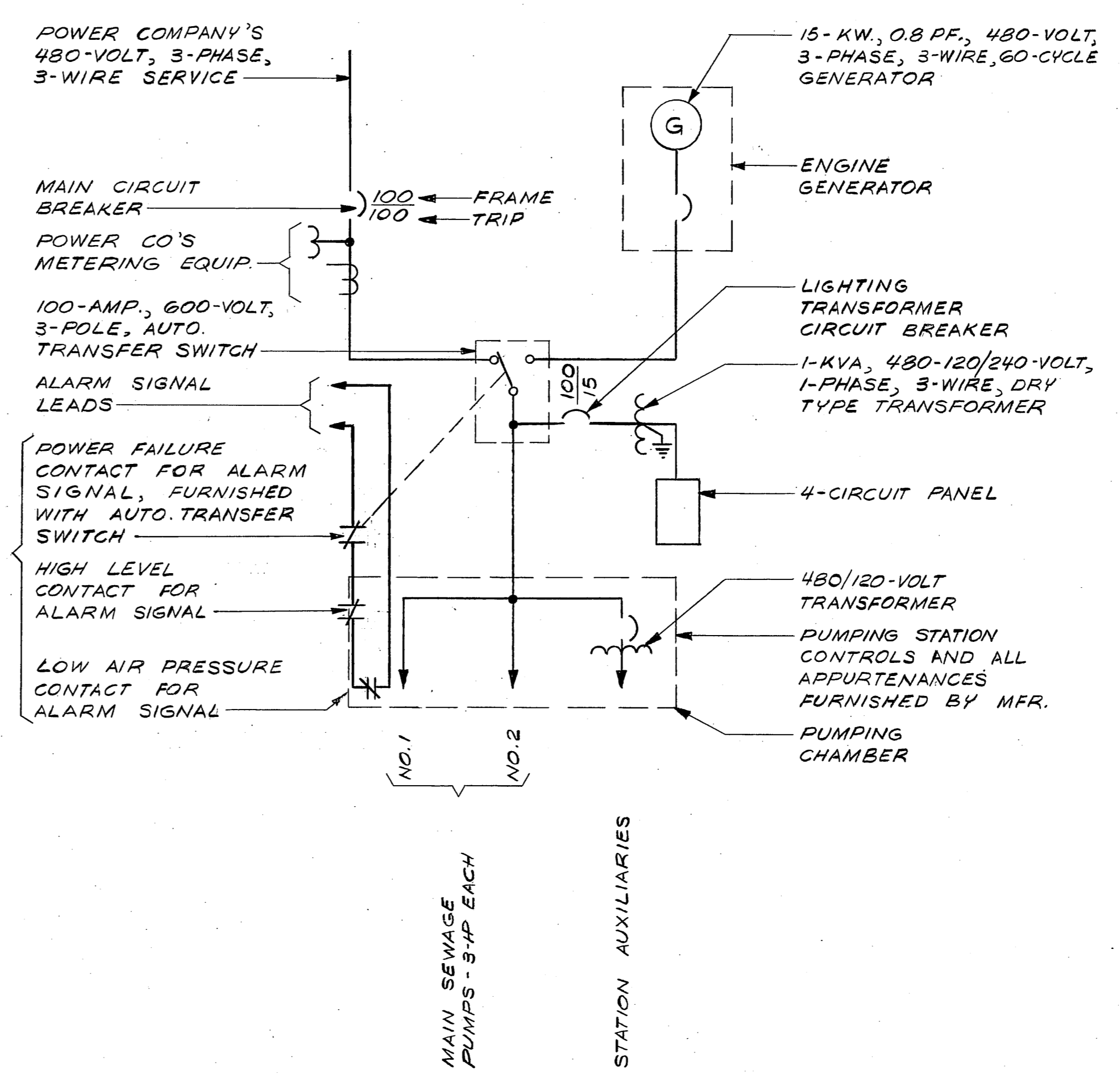
REVISION	MADE BY	CHECKED BY	DESCRIPTION
9/17/66	E.K. - P.W.	H.E.K.	REVISE FOR RECORD
SCALE	AS SHOWN	DATE	MAY, 1966
UNLESS OTHERWISE NOTED OR CHANGED BY REPRODUCTION			
APPROVED			
FOR METCALF & EDDY, ENGINEERS			
			5/16/66
REG. PROF. ENGR. CONN. NO. 3410			DATE

M&E METCALF & EDDY, ENGINEERS  
BOSTON - NEW YORK - PALO ALTO.

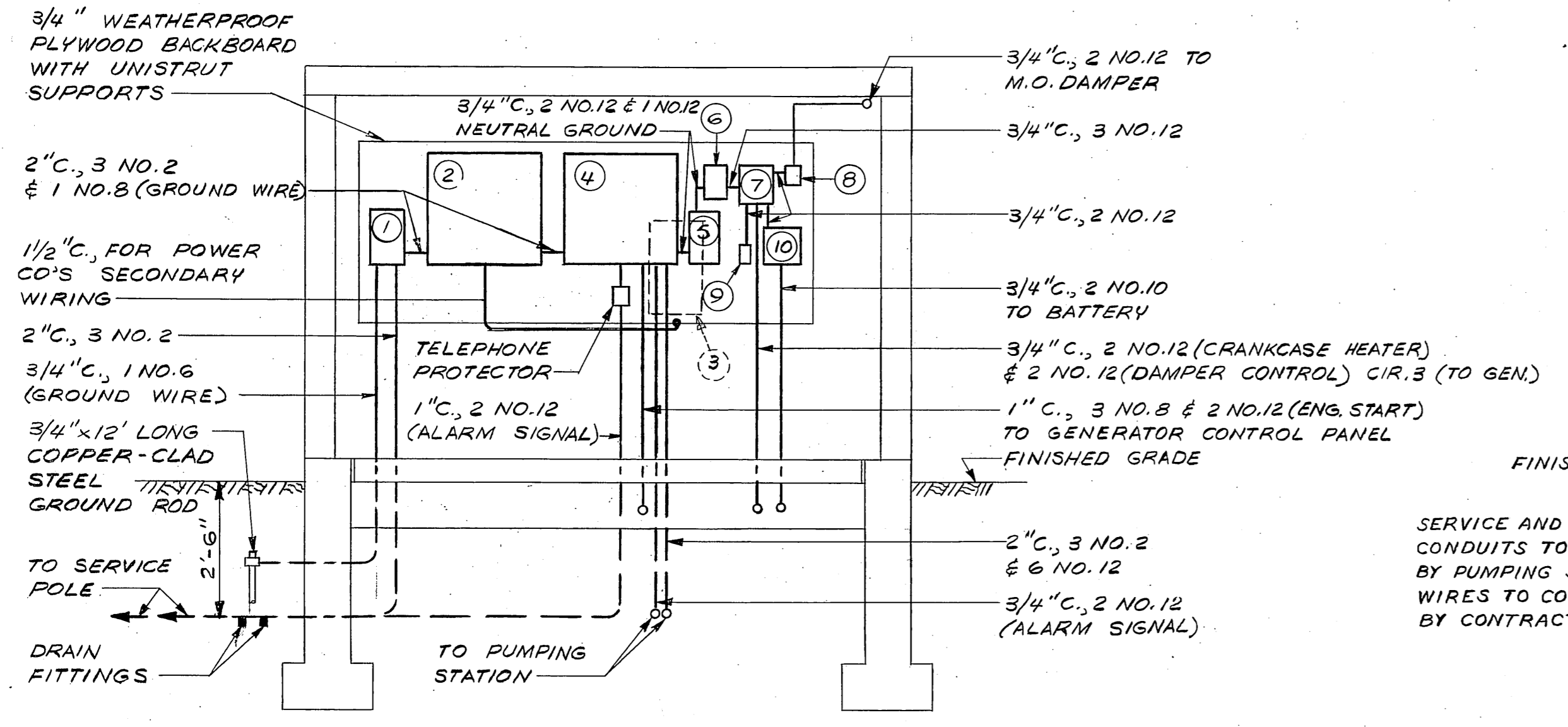
H 45180  
1



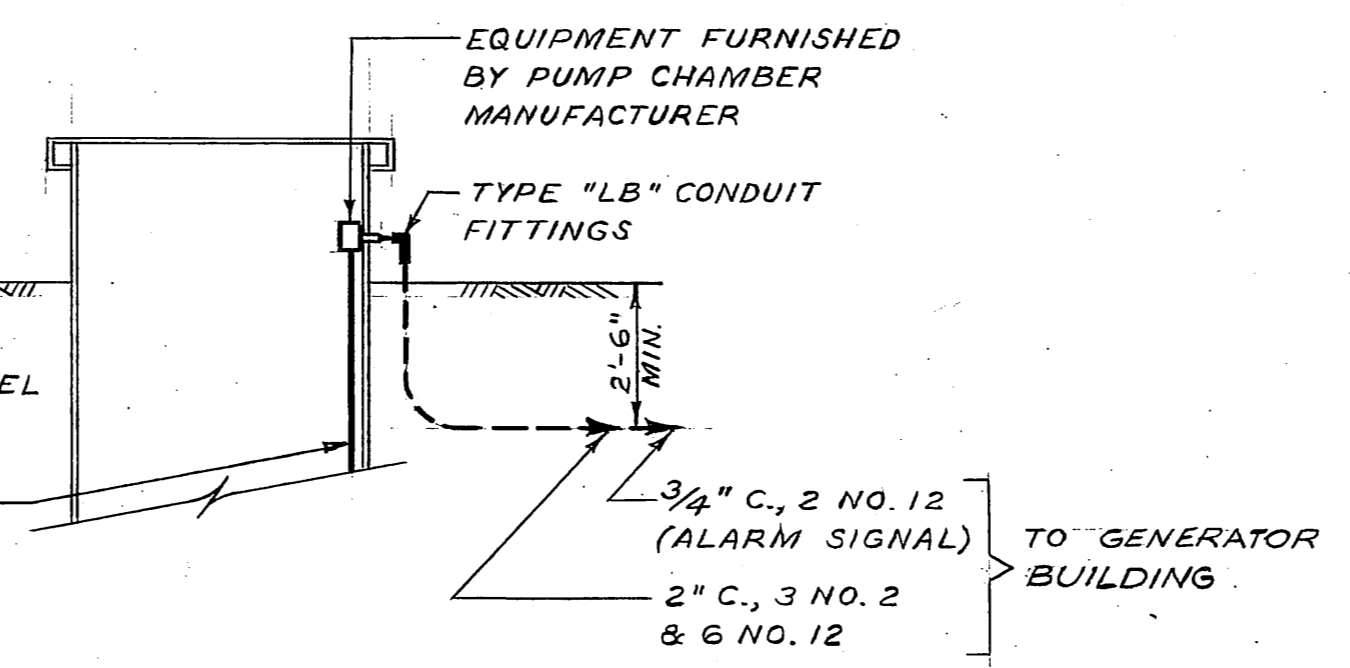
PLAN  
SCALE: 3/8" = 1'-0"



SINGLE LINE DIAGRAM



SECTION 1  
SCALE 3/8" = 1'-0"



SECTION 2  
NO SCALE

GENERAL NOTES

1. ALL CONDUITS AND EQUIPMENT ARE INSTALLED AND GROUNDED IN ACCORDANCE WITH THE LATEST RULES AND REGULATIONS OF THE NATIONAL BOARD OF FIRE UNDERWRITERS.
2. CONDUIT RUNS ARE SHOWN DIAGRAMMATICALLY ONLY AND ARE INSTALLED IN A MANNER TO PREVENT CONFLICTS WITH EQUIPMENT AND STRUCTURAL CONDITIONS. EXPOSED CONDUITS INSTALLED PARALLEL TO BEAMS AND WALLS.
3. CONDUITS ARE TERMINATED TO PERMIT NEAT CONNECTIONS TO MOTORS AND OTHER EQUIPMENT.
4. SWITCHES ARE MOUNTED 4'-6" ABOVE FINISHED FLOOR
5. CONDUIT AND WIRES ARE EXTENDED UP POLE TO HEIGHT DIRECTED BY POWER CO. AND TELEPHONE CO. SUFFICIENT SLACK PROVIDED FOR POWER CO. AND TELEPHONE CO. CONNECTIONS.

EQUIPMENT SCHEDULE *	
①	MAIN CIRCUIT BREAKER, 480-VOLT, 3-POLE, 3-WIRE
②	METERING TRANSFORMER CABINET
③	CABINET FOR POWER CO'S METER AND TEST BLOCK
④	AUTOMATIC TRANSFER SWITCH, 100-AMP, 600-VOLT, 3-POLE
⑤	LIGHTING TRANSFORMER CIRCUIT BREAKER, 480-VOLT, 2-POLE
⑥	DRY-TYPE LTG. TRANSFORMER, 1-KVA, 480-120/240-VOLT, 1-PH.
⑦	4-CIRCUIT LTG. PANEL, INCL. 1-SPARE CIRCUIT BREAKER
⑧	THERMOSTAT
⑨	DUPLEX RECEPTACLE (CIR.1)
⑩	BATTERY CHARGER (FURNISHED W/GENERATOR) CIR.2

\* EQUIPMENT TO HAVE NEMA TYPE 1 ENCLOSURES UNLESS OTHERWISE INDICATED

DRAWN BY J.L.M.  
DEPT. CHECK RNC  
PROJ. CHECK RDE

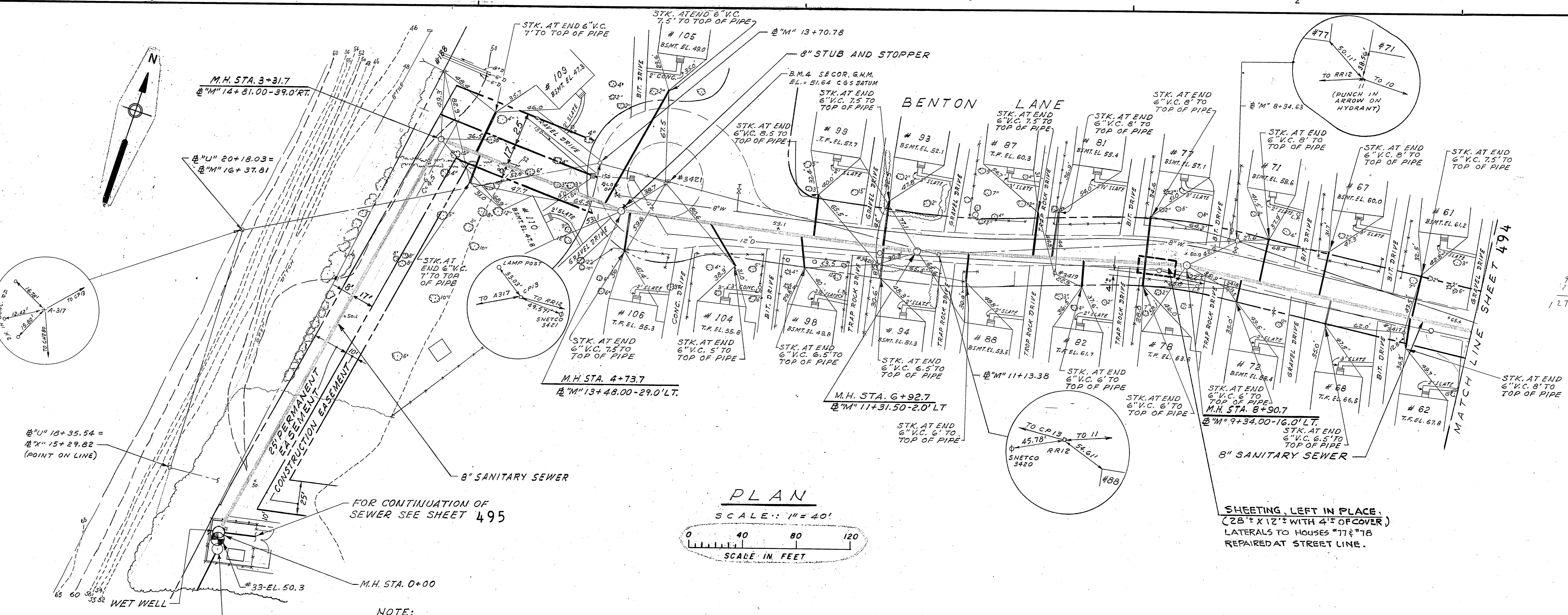
RECORD DRAWING

TOWN OF GLASTONBURY, CONNECTICUT BOARD OF SEWER COMMISSIONERS HUBBARD BROOK AREA SEWERS			
REVISION	MADE BY	CHECKED BY	DESCRIPTION
9/17/68	E.K.P.W.	H.E.K.	REVISE FOR RECORD
SCALE AS SHOWN		DATE MAY, 1966	
UNLESS OTHERWISE NOTED OR CHANGED BY REPRODUCTION			
APPROVED			
FOR METCALF & EDDY, ENGINEERS			
John S. Bethel Jr. REG. PROF. ENGR. CONN. NO. 3470		5/16/66 DATE	

NUTMEG PUMPING STATION PART III

METCALF & EDDY, ENGINEERS  
BOSTON - NEW YORK - PALO ALTO.

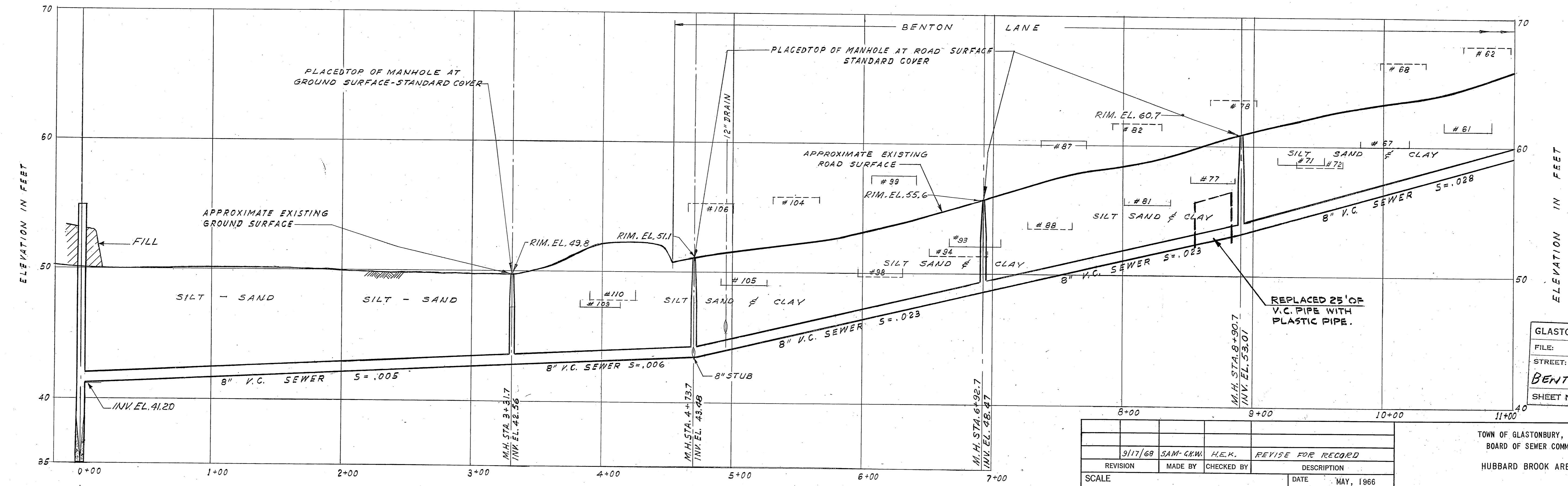
H 45181  
1



**PLAN**  
SCALE: 1"=40'

NOTE:  
FOR NUTMEG PUMPING STATION  
DETAILS SEE SHEET 49.

SHEETING, LEFT IN PLACE,  
(28" X 12" WITH 4" OF COVER)  
LATERALS TO HOUSES #77 & #78  
REPAIRED AT STREET LINE.



**PROFILE**  
SCALE: HOR. 1"=40'  
VER. 1"=4'

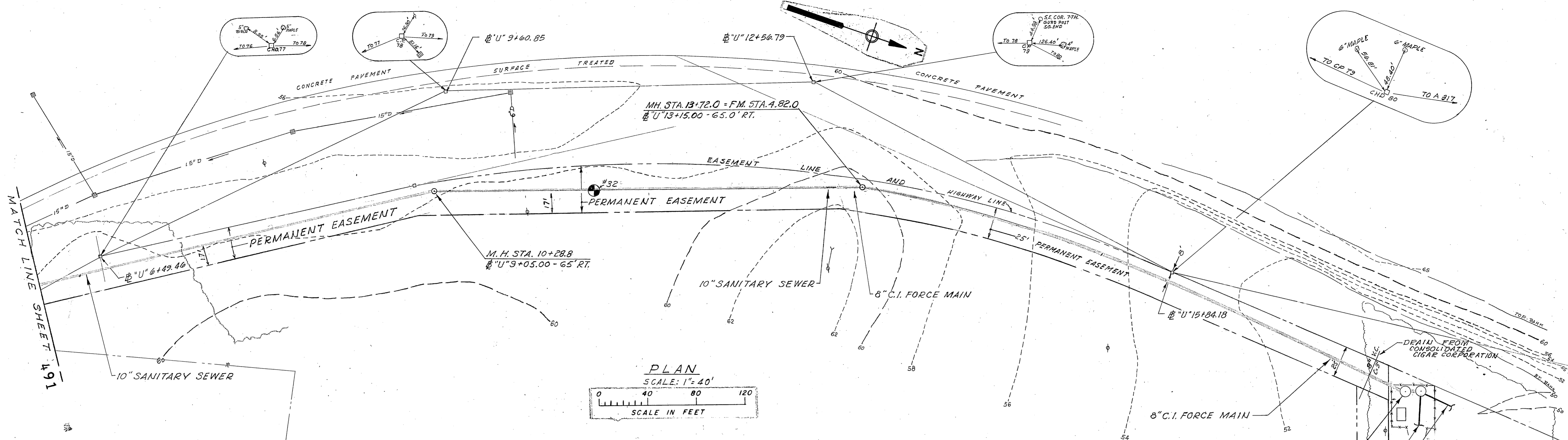
GLASTONBURY PUBLIC WORKS	
FILE:	
STREET:	BENTON LANE
SHEET NO.	6

TOWN OF GLASTONBURY, CONNECTICUT BOARD OF SEWER COMMISSIONERS HUBBARD BROOK AREA SEWERS			
BENTON LANE LATERAL STA. 0+00 TO STA. 11+00			
REVISION	MADE BY	CHECKED BY	DESCRIPTION
9/17/68	SAM-CKM	H.E.K.	REVISE FOR RECORD
SCALE: AS SHOWN		DATE: MAY, 1966	
UNLESS OTHERWISE NOTED OR CHANGED BY REPRODUCTION			
APPROVED			
FOR METCALF & EDDY, ENGINEERS			
John S. Butcher Jr.		5/16/66	
REG./PROF. ENGR. CONN. NO. 3410		DATE	

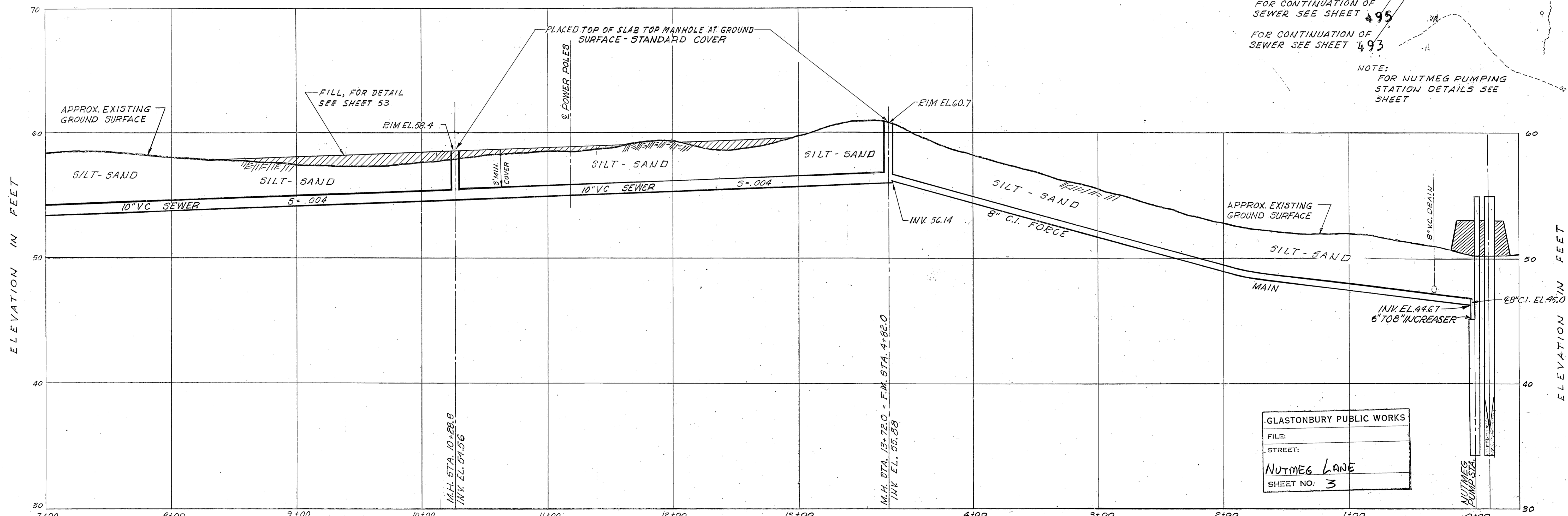
**M&E** METCALF & EDDY, ENGINEERS  
BOSTON - NEW YORK - PALO ALTO.

DRAWN BY P.B.W.  
DEPT. CHECK HPT  
PROJ. CHECK ZDC

**RECORD DRAWING**



PLAN  
SCALE: 1" = 40'  
SCALE IN FEET



PROFILE  
SCALE: HOR. 1" = 40'  
VER. 1" = 4'

GLASTONBURY PUBLIC WORKS  
FILE:  
STREET:  
NUTMEG LANE  
SHEET NO. 3

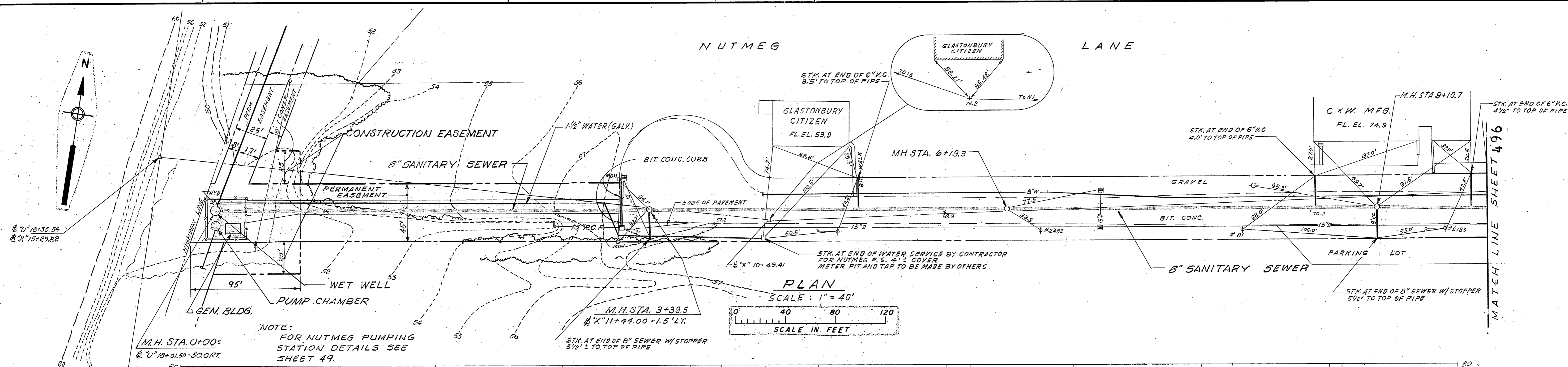
REVISION	MADE BY	CHECKED BY	DESCRIPTION
9/17/68	JAM-C.M.W.	H.E.K.	REVISE FOR RECORD
SCALE: AS SHOWN			DATE: MAY, 1966
UNLESS OTHERWISE NOTED OR CHANGED BY REPRODUCTION			
APPROVED			
FOR METCALF & EDDY, ENGINEERS			
John P. Eddy		5/16/66	DATE
REG. PROF. ENGR. CONN. NO. 3410			

TOWN OF GLASTONBURY, CONNECTICUT  
BOARD OF SEWER COMMISSIONERS  
HUBBARD BROOK AREA SEWERS  
NUTMEG TRUNK  
STA. 7+00 TO STA. 13+54  
NUTMEG FORCE MAIN  
STA. 0+00 TO STA. 4+85

ME METCALF & EDDY, ENGINEERS  
BOSTON - NEW YORK - PALO ALTO.

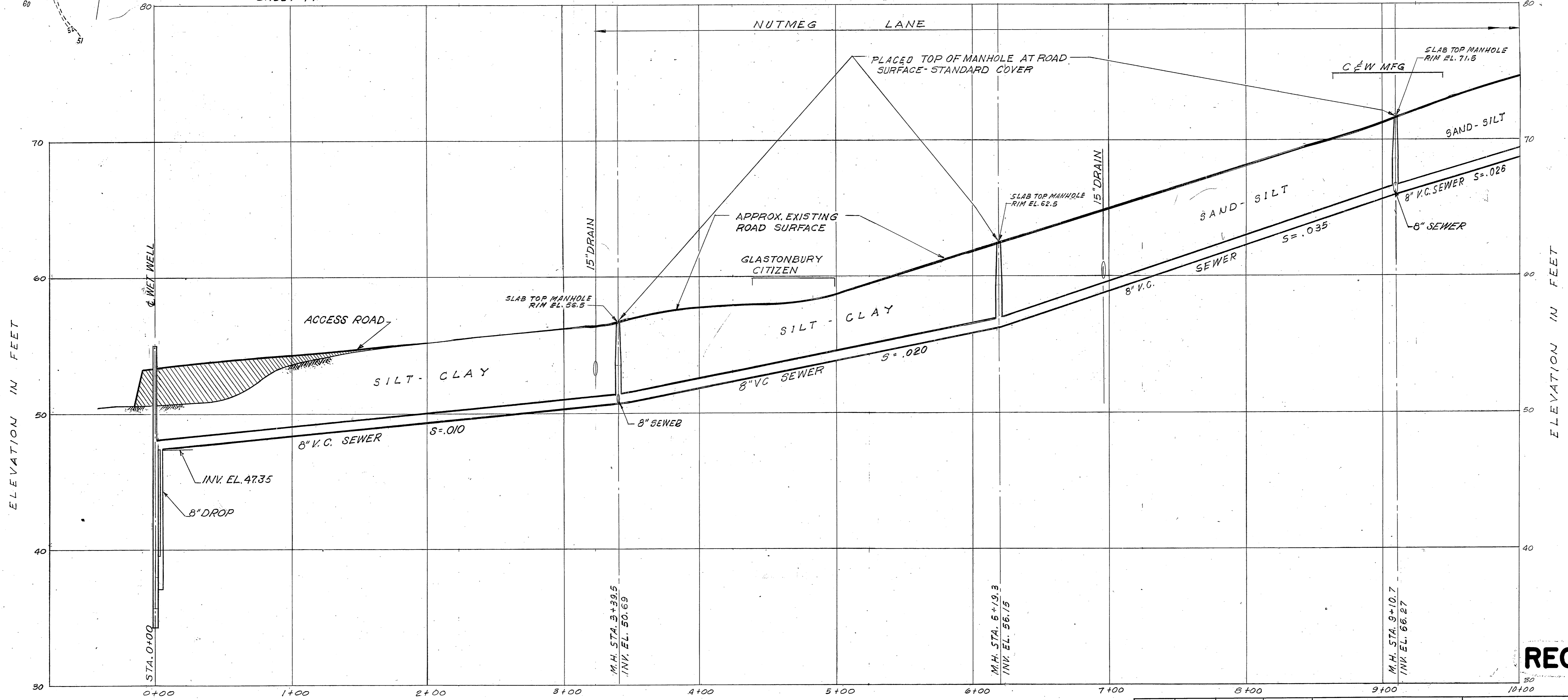
DRAWN BY P.W.-H.S.  
DEPT. CHECK HPT  
PROJ. CHECK RDC

RECORD DRAWING



**PLAN**  
SCALE: 1" = 40'  
SCALE IN FEET

NOTE:  
FOR NUTMEG PUMPING  
STATION DETAILS SEE  
SHEET 49.



**PROFILE**  
SCALE: HOR. 1" = 40'  
VER. 1" = 4'

GLASTONBURY PUBLIC WORKS	
FILE:	
STREET:	NUTMEG LANE
SHEET NO.	4

**RECORD DRAWING**

9/17/68	E.K.-RW	H.E.K.	REVISE FOR RECORD
REVISION	MADE BY	CHECKED BY	DESCRIPTION
SCALE: AS SHOWN		DATE: MAY, 1966	
UNLESS OTHERWISE NOTED OR CHANGED BY REPRODUCTION			
APPROVED			
FOR METCALF & EDDY, ENGINEERS			
John Butcher		5/16/66	
REG. PROF. ENGR. CONN. NO. 3410		DATE	

TOWN OF GLASTONBURY, CONNECTICUT  
BOARD OF SEWER COMMISSIONERS  
HUBBARD BROOK AREA SEWERS  
  
NUTMEG LANE LATERAL  
STA. 0+00 TO STA. 10+00

**M&E** METCALF & EDDY, ENGINEERS  
BOSTON - NEW YORK - PALO ALTO

H  
45144  
1

DRAWN BY P.W.-H.S.  
DEPT. CHECK HPT  
PROJ. CHECK RDC