

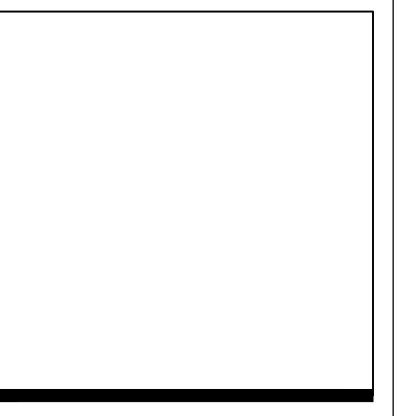
DATE: 10/31/2022  
 DRAWN BY: RCD  
 SCALE: WGW  
 REVIEWED BY:  
 PROJECT NO. 70807.00

NO.	DATE	DESCRIPTION

**benesch**  
 120 Hebron Avenue, 2nd Floor  
 Glastonbury, Connecticut 06033  
 F 860-633-1068  
 www.benesch.com

**SCHEMATIC SITE PLAN**

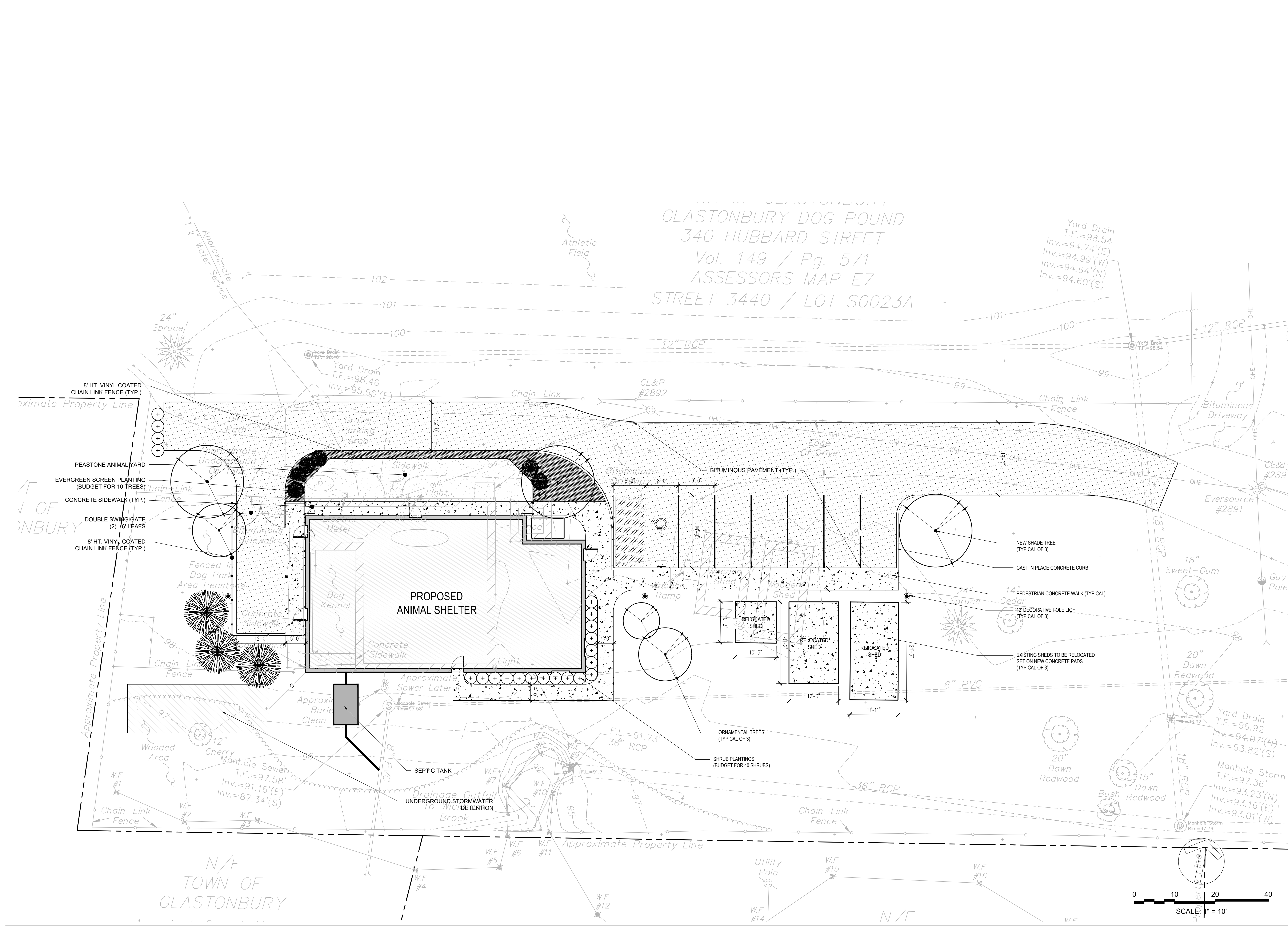
SITE IMPROVEMENTS  
**GLASTONBURY ANIMAL SHELTER**  
 340 HUBBARD STREET  
 GLASTONBURY, CT 06033



ARCHITECT'S SEAL

**FRIAR**  
 21 Talcott Notch Road  
 Farmington, CT 06032

SHEET NO. **C2.0**



PROJECT: GASTONBURY  
 GLASTONBURY DOG POUND  
 340 HUBBARD STREET  
 Vol. 149 / Pg. 571  
 ASSESSORS MAP E7  
 STREET 3440 / LOT S0023A

N/F  
 TOWN OF  
 GLASTONBURY