

Approved Elevations

SHOPS ON MAIN, LLC PROJECT/APPLICANT	PBD (PLANNED BUSINESS AND DEVELOPMENT) ZONE
2941-2955 MAIN STREET, GLASTONBURY, CT 06033 PROJECT ADDRESS	
SECTION 12 SPECIAL PERMIT SECTION	TPZ CHAIRMAN
DATE SPECIAL PERMIT AFF'D	DIRECTOR OF COMMUNITY DEVELOPMENT
FILE NO.	



① EAST
1/8" = 1'-0"



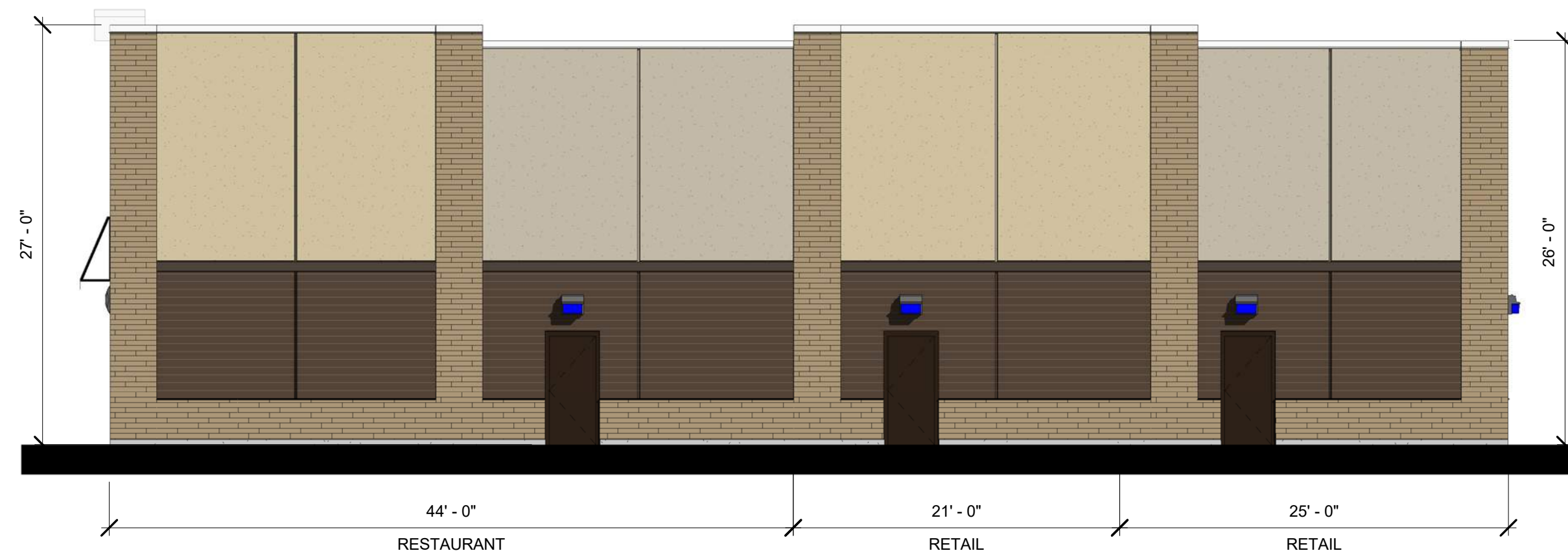
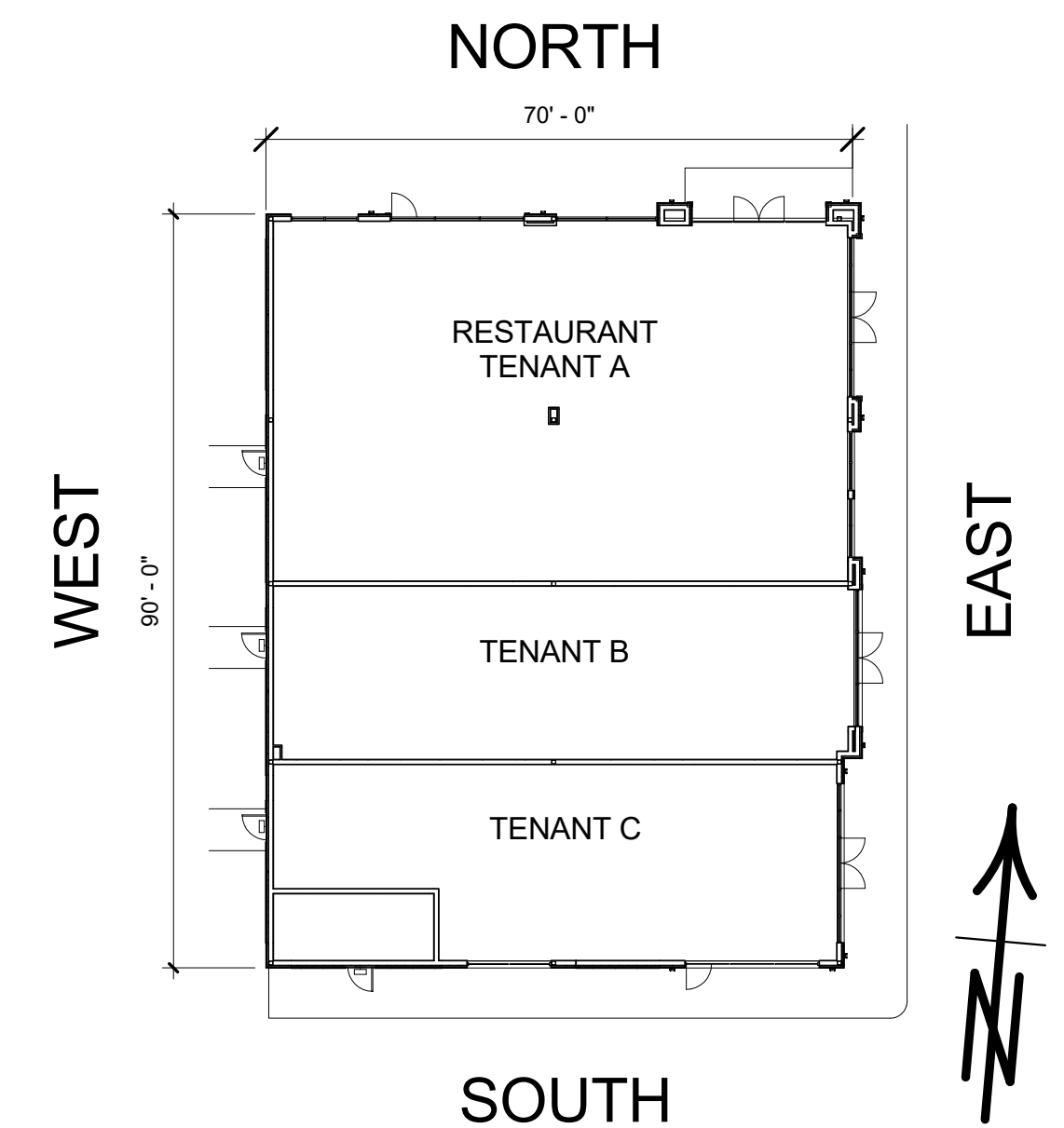
② NORTH
1/8" = 1'-0"

**ORIGINAL INK
ON MYLAR**

TENANT SIGNAGE KEY

XX s.f. = DESIGNATED SIGN AREA

ALL SIGNS ARE INTERNALLY ILLUMINATED CHANNEL LIT LETTERS/ LOGOS



③ WEST
1/8" = 1'-0"



④ SOUTH
1/8" = 1'-0"

Scott Griffin
ARCHITECTS

880 Main Street, Fifth Floor
Waltham, Massachusetts 02451
Phone (781) 693-7400 Fax (781) 693-7350

BUILDING THREE
2951 MAIN STREET
GLASTONBURY, CT



1414 ATWOOD AVE
JOHNSTON, RI 02919

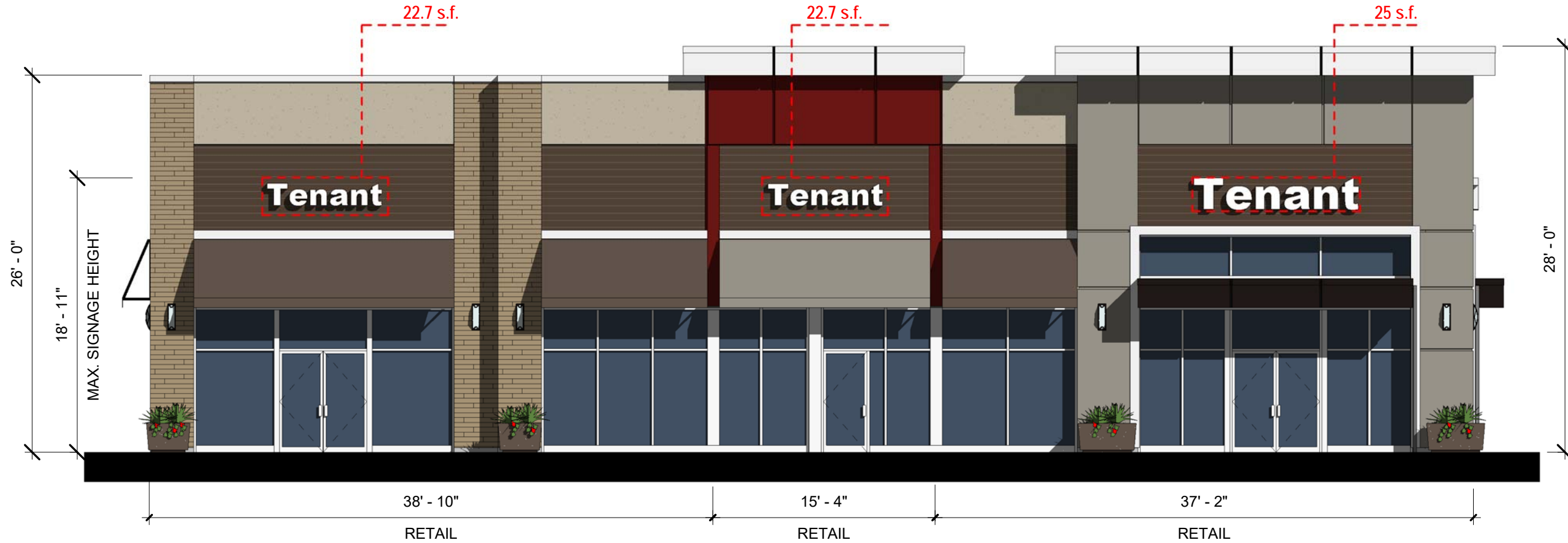
COLOR ELEVATIONS - REVISED

Project number	18141.00
Date	2/28/19
Drawn by	MJD
Checked by	TS

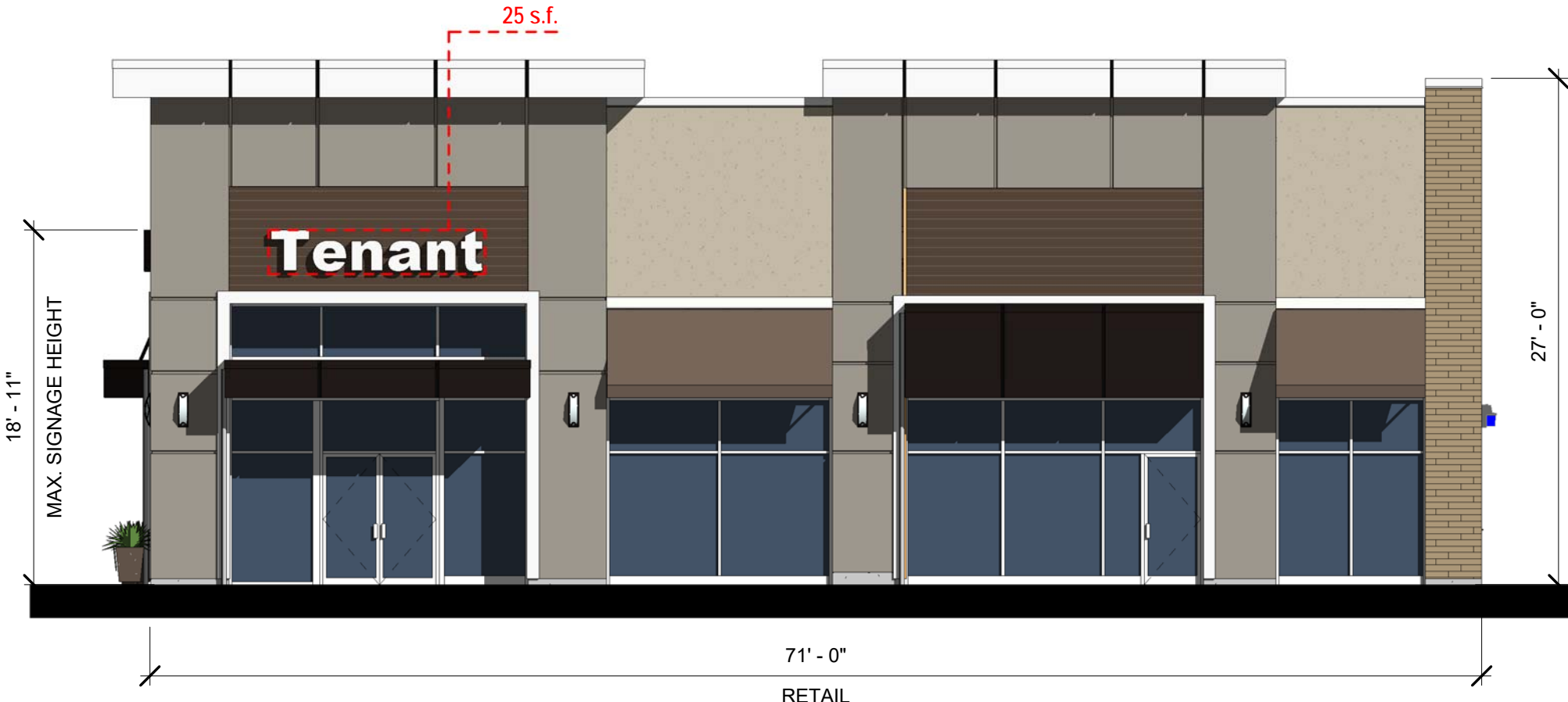
RETAIL BLDG -3

Scale As indicated

Proposed Elevations



① EAST
1/8" = 1'-0"

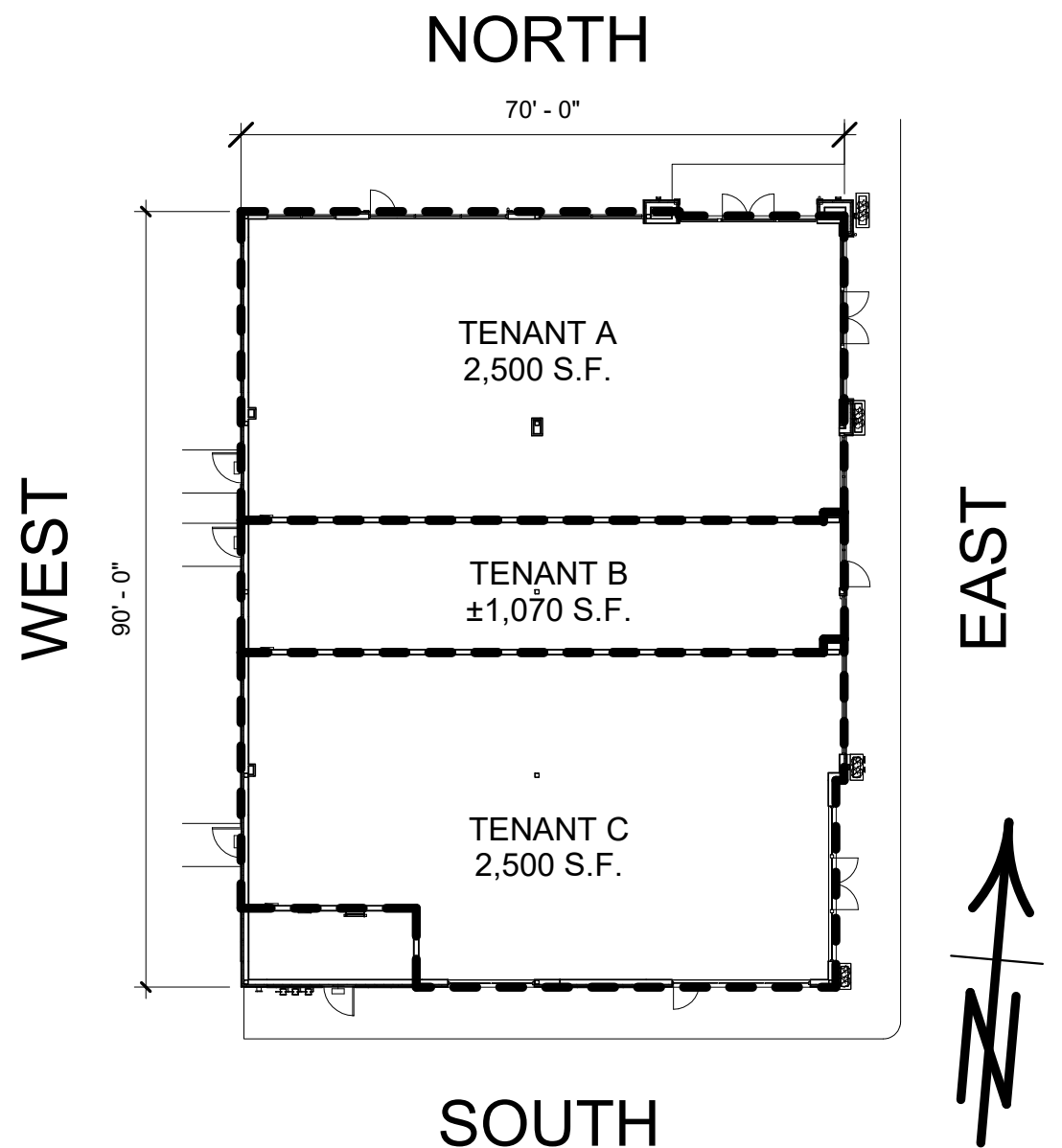


② NORTH
1/8" = 1'-0"

TENANT SIGNAGE KEY

XX s.f. = DESIGNATED SIGN AREA

ALL SIGNS ARE INTERNALLY ILLUMINATED CHANNEL LIT LETTERS/ LOGOS



③ WEST
1/8" = 1'-0"



④ SOUTH
1/8" = 1'-0"

Scott Griffin
ARCHITECTS

880 Main Street, Fifth Floor
Waltham, Massachusetts 02451
Phone (781) 693-7400 Fax (781) 693-7350

BUILDING THREE
2951 MAIN STREET
GLASTONBURY, CT

Carpionato

1414 ATWOOD AVE
JOHNSTON, RI 02919

COLOR ELEVATIONS - REVISED 11/10/2022

Project number	18141.00	RETAIL BLDG -3
Date	8/02/2022	
Drawn by	NN	
Checked by	TS	
Scale		As indicated

GFRC Lightweight Concrete

Standard Colors

Our GFRC concrete begins as white cement with colored pigment and sand is used as a surface coat, and from there the natural materials take over. Because we're using quartz and mica sands, there is always a natural tone to any GFRC color. Sample texture and color combinations are available upon request. Colors shown are in Acid Etch texture.



Charcoal



Pearl



Clay



Sandbox



Mist



Rain



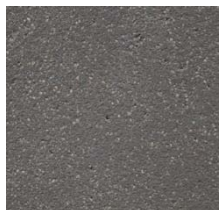
Moss



Celery



Shark



Shadow



Carob

Textures

Versatile GFRC lightweight concrete textures range from the rustic to the refined. Our finishes feature natural quartz and mica sands, and the durable finishes can be refinished and repaired on site as required. The Travertine, Sandblast, and Acid Etch finishes are variations on natural concrete finishes, while Natural Sand and Fine Grain rely on applied paints and texture, similar to FRP finishes. We send out a color/texture sample as a submittal with every order confirmation to make sure that you are getting what you expect.

All finishes are shown below in Shark, but are available in any GFRC color. Note: Travertine is a hand-packed finish and will have a high degree of variability in the end finish.

Note: GFRC colors can vary based on texture selected.



Clay shown in all 5 textures



Rain shown in all 5 textures



Acid Etch



Sandblast



Travertine



Fine Grain



Natural Sand

Note: Actual color should be based upon painted samples provided by Tournesol. Do not rely on the colors printed in this catalog, on our website, or online. Premium custom GFRC finish colors provided by Buddy Rhodes.

Urban Collection

Materials: **FRP Fiberglass and Lightweight GFRC Concrete**

The Urban Collection Round, Square and Rectangular Planters present a sleek, simple, and elegantly tapered design. Available in lightweight FRP fiberglass and lightweight GFRC concrete, Urban planters are designed to be durable despite low weight - even for heavy-traffic locations! Sizes range from 18" to 60", with customizations available.



- Coordinates with our self-watering container irrigation products
- Lightweight FRP fiberglass and GFRC concrete are designed to be durable despite low weight - even for heavy-traffic locations
- Round, square, and rectangular sizes from 18" to 60", with customization available



Rounds

Part. No.	Material	Exterior Size (top x bottom x ht)	Interior Size (top x bottom x ht)	Weight (lbs.)	Soil Volume (cubic ft.)	Matching Irrigation
US-1800	FRP	18" x 13.5" x 24"	14" x 13" x 23.5"	11	2.6	CWM-1114-MS
US-2400	FRP	24" x 19" x 27"	20" x 18.5" x 26.5"	20	5.5	CWC-1600/CWM-1114-2K
US-3000	FRP	30" x 25.5" x 32"	26" x 25" x 31.5"	32	11	CWC-2100/CWM-1720-2K
US-3600	FRP	36" x 29.5" x 34"	32" x 29" x 33.5"	42	16	CWC-2500/CWM-1720-3K
US-4200	FRP	42" x 36.5" x 36"	38" x 36" x 35.5"	52	25	CWC-3300/CWM-1720-4K
US-4800	FRP	48" x 42.5" x 36"	44" x 41.5" x 35.5"	70	32	CWM-1720-5K
US-6000	FRP	60" x 53" x 36"	54" x 52.5" x 35.5"	90	45	CWM-2920-3K
US-7200	FRP	72" x 65" x 42"	68" x 63" x 41.5"	140	93	CWM-2920-3K
UCS-2400	GFRC	24" x 19" x 27"	20" x 17" x 26"	130	5	CWC-1600/CWM-1114-2K
UCS-3000	GFRC	30" x 25.5" x 32"	26" x 23.5" x 31"	190	10	CWC-2100/CWM-1720-2K
UCS-3600	GFRC	36" x 29.5" x 34"	32" x 27.5" x 33"	255	16	CWC-2500/CWM-1720-3K
UCS-4200	GFRC	42" x 37.5" x 36"	38" x 35.5" x 35"	320	24	CWC-3300/CWM-1720-4K
UCS-4800	GFRC	48" x 42.5" x 36"	44" x 40.5" x 35"	390	30	CWM-1720-5K
UCS-6000	GFRC	60" x 53" x 36"	54" x 51" x 34.5"	665	45	CWM-2920-3K
UCS-6024	GFRC	60" x 42" x 24"	56" x 41" x 23.5"	355	28	CWM 2914-2K

Squares

Part. No.	Material	Exterior Size (top x bottom x ht)	Interior Size (top x bottom x ht)	Weight (lbs.)	Soil Volume (cubic ft.)	Matching Irrigation
UR-1800	FRP	18" x 14.5" x 24"	14" x 14" x 23"	25	3.5	CWC-R1100/CWM-R1114-MS
UR-2400	FRP	24" x 19.5" x 27"	21" x 19" x 26"	30	7.2	CWC-R1850/CWM-R1114-2K
UR-3000	FRP	30" x 24.5" x 34"	26" x 24" x 33"	40	14	CWM-R2020-MS
UR-3600	FRP	36" x 30" x 34"	32" x 29.2" x 33"	75	20	CWM-R2020-2K
UR-4200	FRP	42" x 36.5" x 36"	38" x 36" x 35.5"	85	30	CWM-R2020-2K
UR-4800	FRP	48" x 42" x 42"	44" x 41" x 41"	125	48	CWM-R2920-2K
UR-6000	FRP	60" x 53.4" x 42"	56" x 53" x 41.5"	135	75	CWM-R2920-4K
UR-7200	FRP	72" x 65" x 42"	68" x 64" x 43.5"	165	117	CWM-R2920-4K
UCR-2400	GFRC	24" x 19.5" x 27"	21" x 16.5" x 26"	160	6.5	CWC-R1850/CWM-R1114-2K
UCR-3000	GFRC	30" x 24.5" x 32"	26" x 22.5" x 31"	260	12	CWM-R2020-MS
UCR-3600	GFRC	36" x 30" x 34"	32" x 28" x 33"	370	20	CWM-R2020-2K
UCR-4800	GFRC	48" x 42" x 42"	43" x 40" x 31"	665	44	CWM-R2920-2K

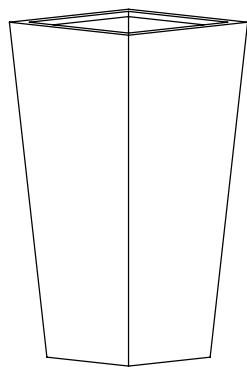


Tall Rounds

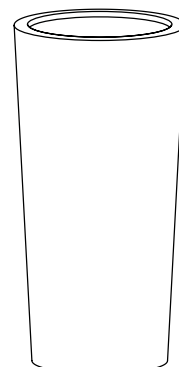
Part. No.	Material	Exterior Size (top x bottom x ht)	Interior Size (top x bottom x ht)	Weight (lbs.)	Soil Volume (cubic ft.)	Matching Irrigation
UST-1800	FRP	18" x 14" x 30"	14" x 13.5" x 29.5"	22	3.5	CWI-1200-X
UST-2400	FRP	24" x 19" x 48"	20" x 18.5" x 47.5"	55	6.5	CWC-1600
UST-3000	FRP	30" x 25" x 54"	26" x 24.5" x 53.5"	75	14	CWC-2100
UCST-1800	GFRC	18" x 14" x 30"	14" x 12.5" x 29"	150	5	CWM-1114-MS
UCST-2400	GFRC	24" x 19.5" x 48"	20" x 18" x 47"	250	5	CWM-1114--2K
UCST-3000	GFRC	30" x 24" x 54"	26" x 22.5" x 53"	400	13	CWM-1114--2K

Tall Squares

Part. No.	Material	Exterior Size (top x bottom x ht)	Interior Size (top x bottom x ht)	Weight (lbs.)	Soil Volume (cubic ft.)	Matching Irrigation
URT-1800	FRP	18" x 13.5" x 30"	14" x 13" x 29.5"	30	3.8	CWM-R1114-MS
URT-2400	FRP	24" x 16.5" x 48"	20" x 16" x 47.5"	65	11	CWC-R1850
URT-3000	FRP	30" x 21.5" x 54"	26" x 21" x 53.5"	80	19	CWM-R2020-MS
UCRT-1800	GFRC	18" x 11.5" x 29"	14" x 11.5" x 29"	200	3.8	CWM-R1114-MS
UCRT-2400	GFRC	24" x 15" x 47"	20" x 15" x 47"	300	12	CWC-R1850
UCRT-3000	GFRC	30" x 20" x 53"	26" x 20" x 53"	450	18	CWM-R2020-MS



URT-2400



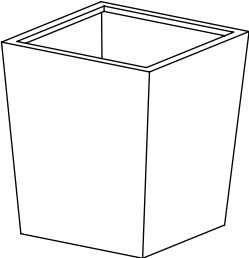
UST-2400



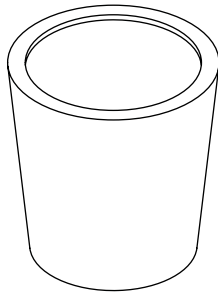
Urban Collection square, round, and rectangle planters are available in sizes from 18" to 60" in many FRP fiberglass and GFRC colors, textures and finishes. Check with your salesperson for alternative shapes or sizes.

Rectangles

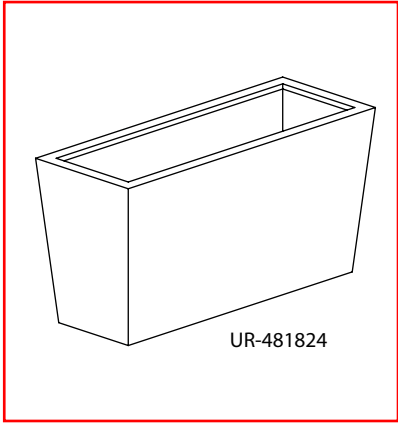
Part. No.	Material	Exterior (top)	(bottom)	(ht)	Interior (top)	(bottom)	(ht)	Weight (lbs.)	Soil Volume (cubic ft.)	Matching Irrigation
UR-241824	FRP	24" x 18"	20.5" x 13.5"	24"	20" x 14"	20" x 13"	23.5"	17	4.75	CWM-R1114-MS
UR-361824	FRP	36" x 18"	32.5" x 13.5"	24"	32" x 14"	32" x 13"	23.5"	33	7.3	CWM-R1114-2K
UR-481824	FRP	48" x 18"	44.5" x 13.5"	24"	44" x 14"	44" x 13"	23.5"	40	10	CWM-R1614-2K
UR-601824	FRP	60" x 18"	56.5" x 13.5"	24"	56" x 14"	56" x 13"	23.5"	50	12.5	CWM-R2014-2K
UR-362424	FRP	36" x 24"	32" x 20"	24"	32" x 20"	32" x 20"	23.5"	35	9.5	CWM-R1614-2K
UR-482424	FRP	48" x 24"	44" x 20"	24"	44" x 20"	44" x 20"	23.5"	45	13	CWM-R1614-2K
UR-602424	FRP	60" x 24"	56" x 20"	24"	56" x 26"	56" x 20"	23.5"	55	16	CWM-R2014-2K
KUR-363030	FRP	36" x 30"	38" x 25"	30"	32" x 26"	31" x 25"	29.5"	46	15	CWM-R1614-2K
UR-483030	FRP	48" x 30"	43" x 25"	30"	44" x 25"	43" x 25"	29.5"	55	20	CWM-R1620-2K
UR-603030	FRP	60" x 30"	56" x 25"	30"	56" x 26"	56" x 20"	29.5"	67	25.5	CWM-R2020-2K
UCR-241824	GFRC	24" x 18"	20.5" x 13.5"	24"	20" x 14"	18.5" x 11.5"	23"	190	4.2	CWM-R1114-MS
UCR-361824	GFRC	36" x 18"	32.5" x 13.5"	24"	32" x 14"	30.5" x 11.5"	23"	250	6.6	CWM-R1114-2K
UCR-481824	GFRC	48" x 18"	44.5" x 13.5"	24"	44" x 14"	42.5" x 11.5"	23"	315	9	CWM-R1614-2K
UCR-601824	GFRC	60" x 18"	56.5" x 13.5"	24"	56" x 14"	54.5" x 11.5"	23"	375	11	CWM-R2014-2K



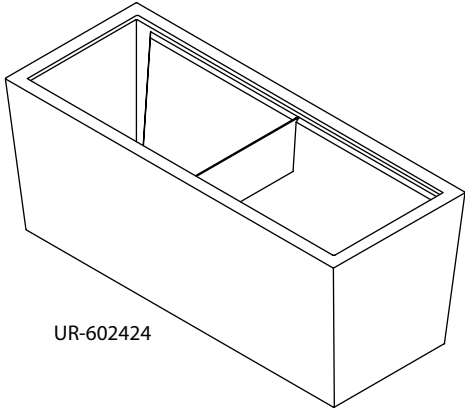
UR-2400



US-2400



UR-481824



UR-602424

