

1 EAST
1/8" = 1'-0"



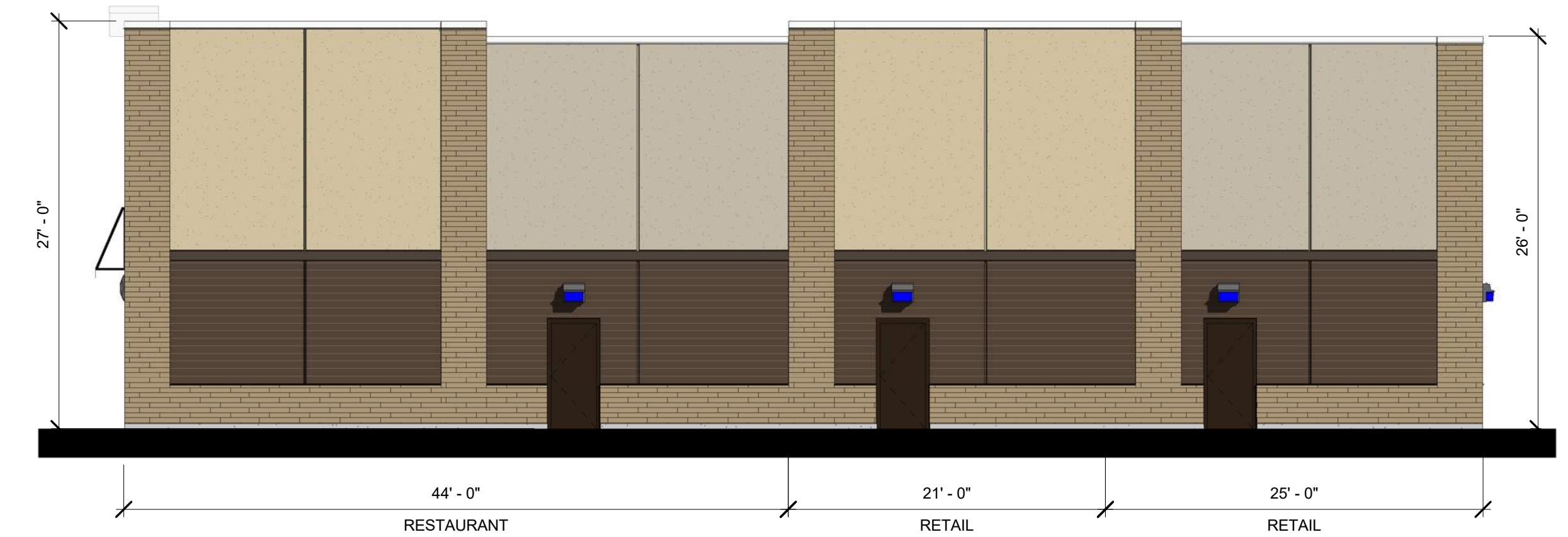
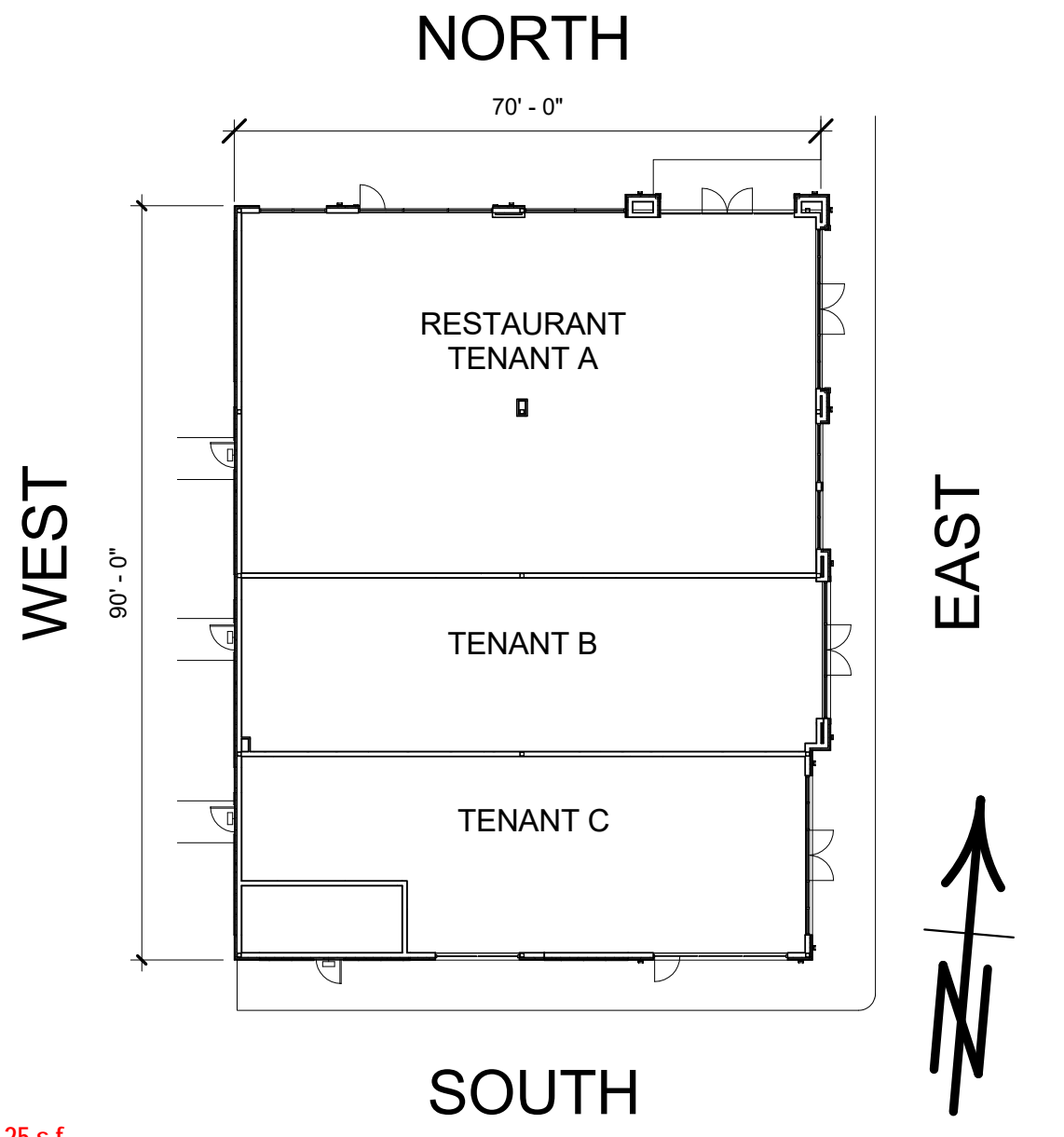
2 NORTH
1/8" = 1'-0"

**ORIGINAL INK
ON MYLAR**

TENANT SIGNAGE KEY

XX s.f. = DESIGNATED SIGN AREA

ALL SIGNS ARE INTERNALLY ILLUMINATED CHANNEL LIT LETTERS/ LOGOS



3 WEST
1/8" = 1'-0"



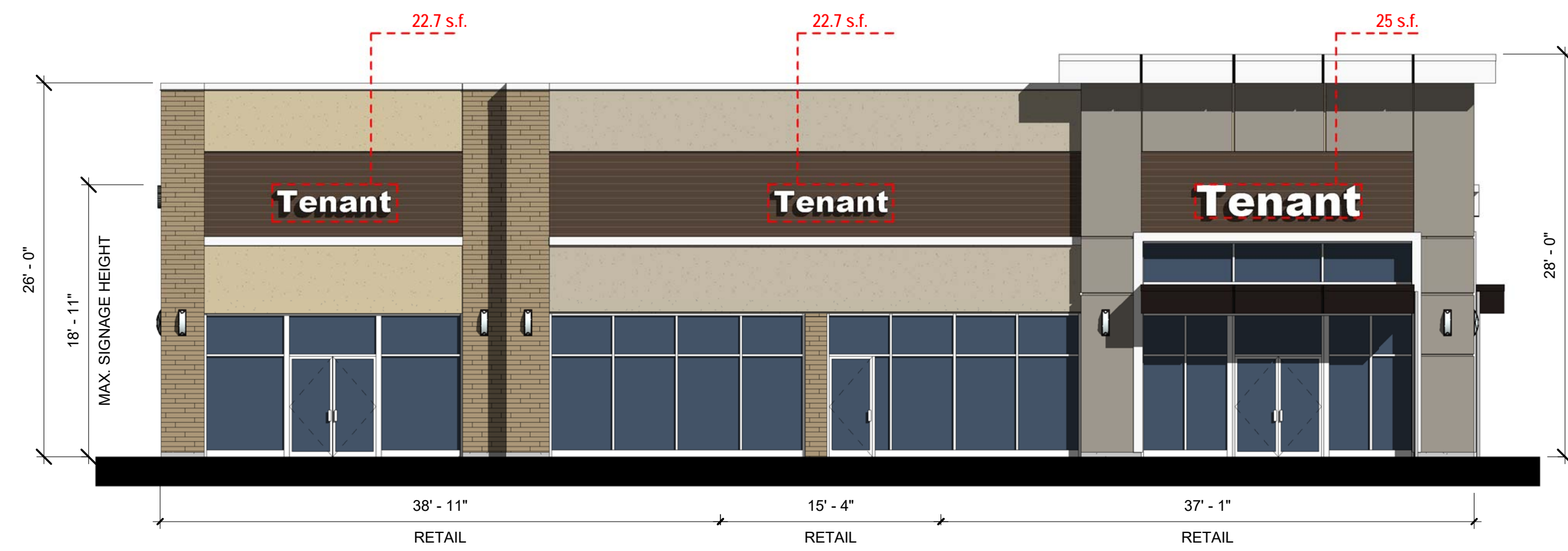
4 SOUTH
1/8" = 1'-0"

Scott Griffin
ARCHITECTS
 880 Main Street, Fifth Floor
 Waltham, Massachusetts 02451
 Phone (781) 693-7400 Fax (781) 693-7350

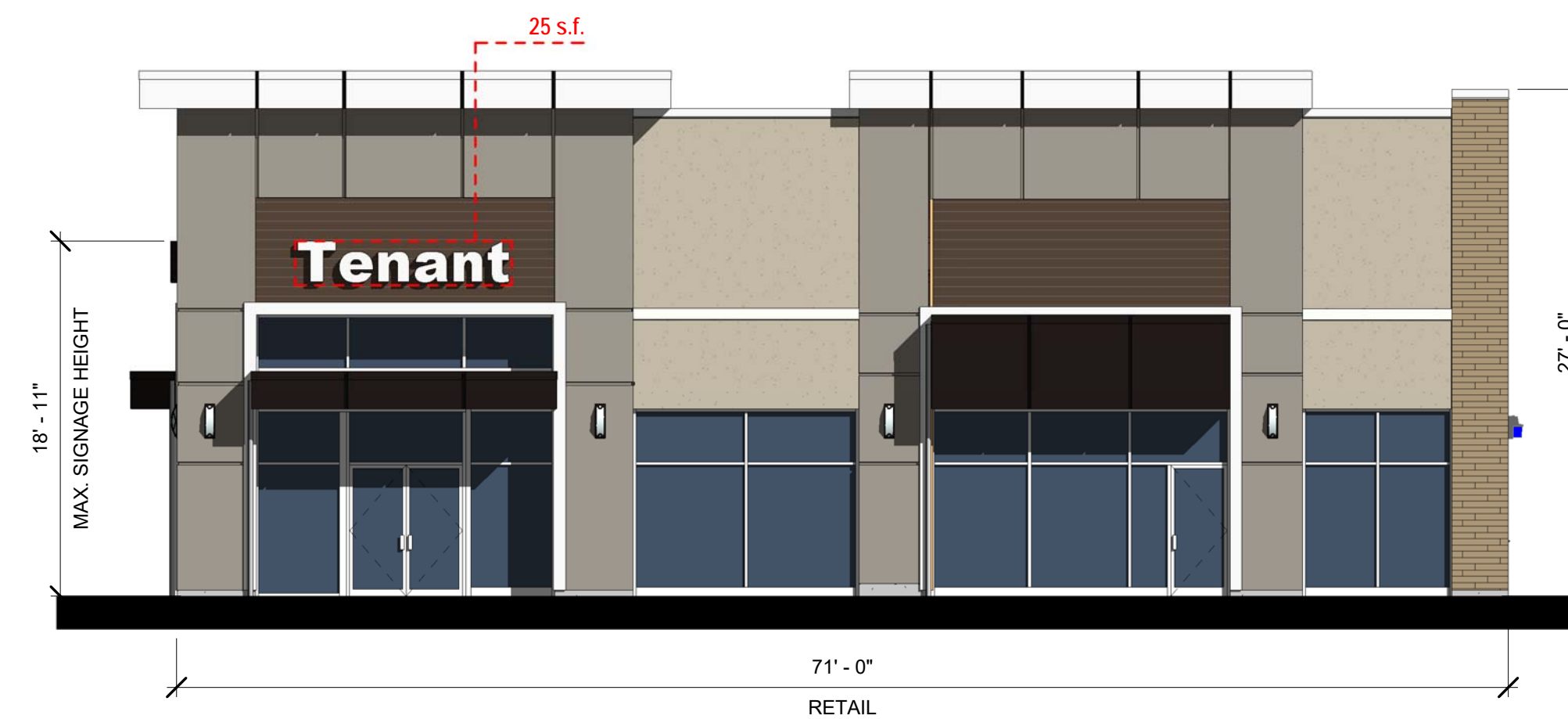
BUILDING THREE
 2951 MAIN STREET
 GLASTONBURY, CT

Carpionato
 1414 ATWOOD AVE
 JOHNSTON, RI 02919

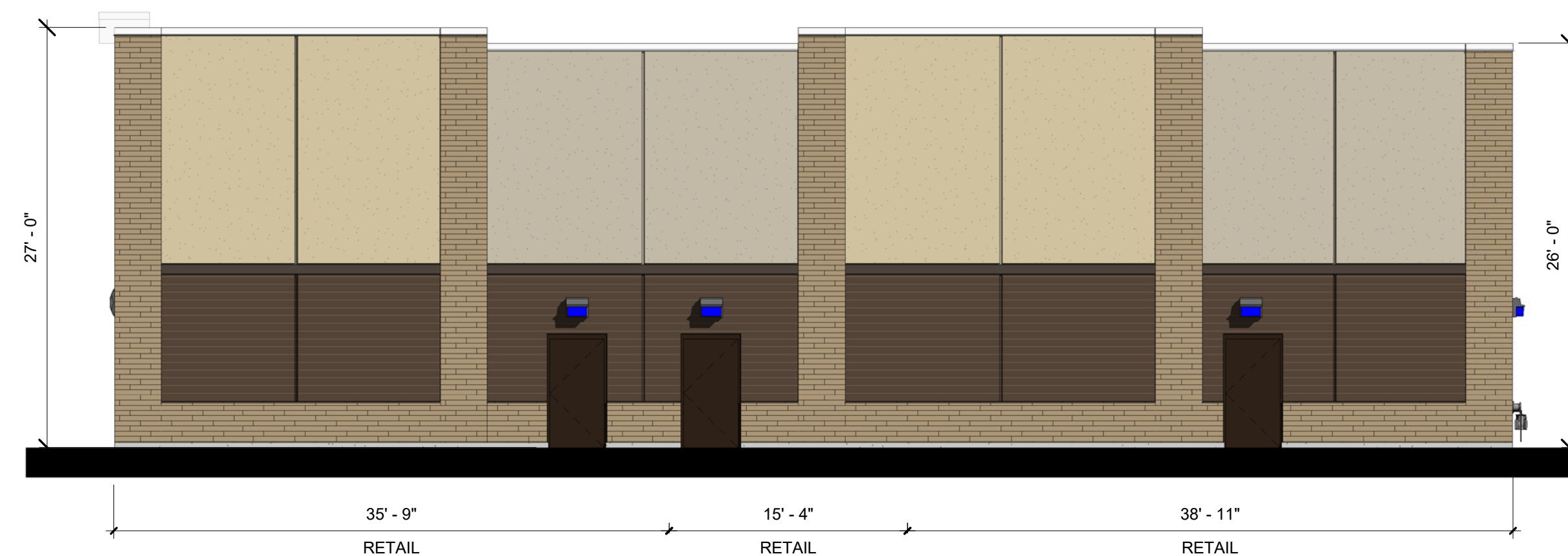
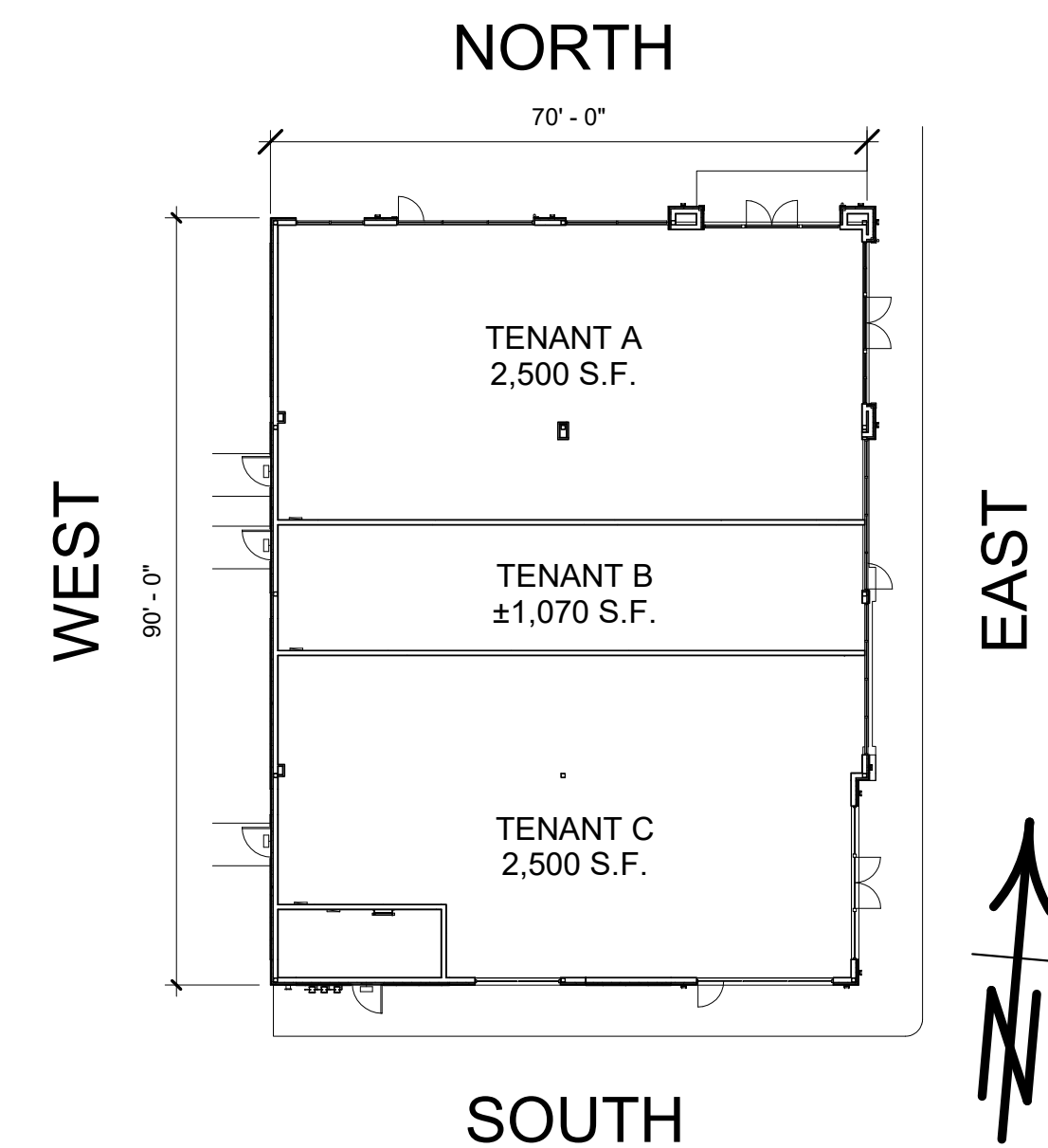
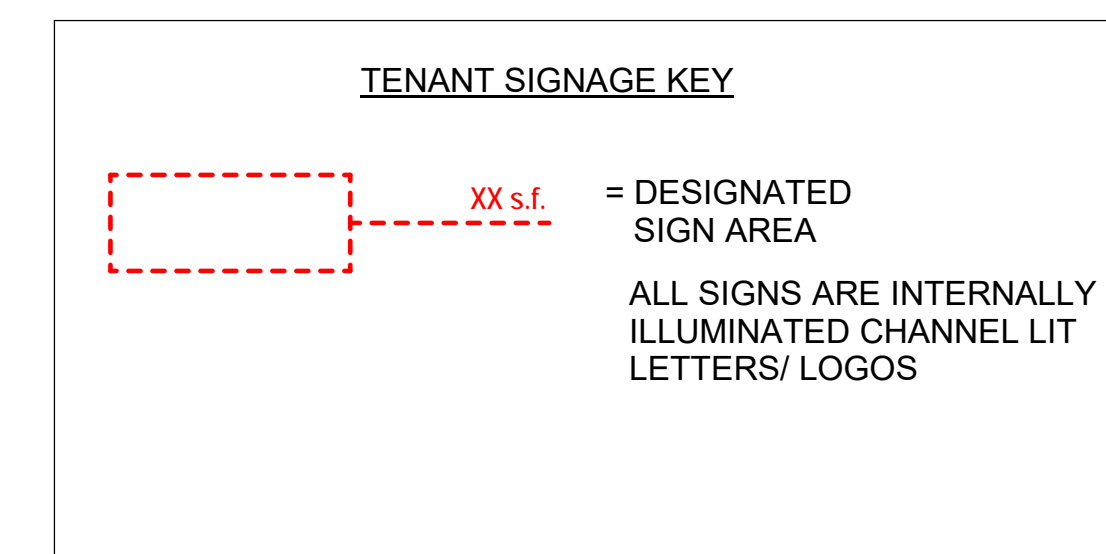
COLOR ELEVATIONS - REVISED		RETAIL BLDG -3
Project number	18141.00	
Date	2/28/19	
Drawn by	MJD	
Checked by	TS	Scale As indicated



① EAST
1/8" = 1'-0"



② NORTH
1/8" = 1'-0"



③ WEST
1/8" = 1'-0"



④ SOUTH
1/8" = 1'-0"



Scott Griffin
ARCHITECTS

880 Main Street, Fifth Floor
Waltham, Massachusetts 02451
Phone (781) 693-7400 Fax (781) 693-7350

BUILDING THREE
2951 MAIN STREET
GLASTONBURY, CT



1414 ATWOOD AVE
JOHNSTON, RI 02919

COLOR ELEVATIONS - REVISED 9-2022

Project number	18141.00
Date	9/16/2022
Drawn by	NN
Checked by	TS

RETAIL BLDG -3

Scale As indicated