



# GLASTONBURY AT A GLANCE

## SEPTEMBER 2022

### UPCOMING EVENTS

The list below is a SAMPLING of upcoming events. Please visit the Town website, [www.glastonburyct.gov/events](http://www.glastonburyct.gov/events), the Sharing Tree (Senior) Newsletter, [www.glastonburyct.gov/sharingtree](http://www.glastonburyct.gov/sharingtree), or the WTML website, [www.wtmlib.com](http://www.wtmlib.com), to view a full list and more details, applicable fees, etc.

- [9/6 - In Search of the Himalayan Snow Leopard](#) - Adult Program - 6:30 PM (WTML)
- [9/7 - Riverfront Music Series: Shaded Soul](#) - 6:00 PM @ Riverfront Park
- 9/17 - The Glastonbury Skate Jam! - 11:00 AM ([see page 9](#))
- [9/21 - Indian Classical Dance](#) - 6:30 PM - Adult program (WTML)
- [9/24 - Household Hazardous Waste Collection Event](#) - 8:00 AM

### ANNUAL TOWN-WIDE TAG SALE

The annual Town-wide tag sale will be held on Saturday, September 24th. Sale begins at 8:00 AM behind the Academy Building. Residents can attend to shop and have the option of purchasing a table to sell their own items as well (\$35 fee). The Town will be selling bikes, tools, jewelry, and other items! [See page 12 of the Parks & Recreation](#) to learn more about the tag sale!

#### Bargains and Shots!

The Health Department is hosting a COVID-19 vaccine clinic for adults and children during the tag sale on Sept. 24th. [Learn more about the clinic here.](#)

### HOLIDAY CLOSINGS

Town facilities will be CLOSED on Monday, September 5th in observance of the Labor Day holiday. This includes Town Hall, Academy, the RCC, WTML, Youth & Family Services, the Transfer Station, and the Bulky Waste Facility. Town facilities will resume standard operating hours on Tuesday, September 6th.

### BUS TRIPS

Sept. 24 - Boston Red Sox vs. New York Yankees @ Yankee Stadium

Oct. 22 - Salem, MA - Includes Admission to the Pirate Museum, Witch History Museum, and More!

Oct. 30 - New England Patriots vs. NY Jets - Includes cookout, prizes & more!

See [page 12 of the Parks & Recreation brochure](#) for fees and more details.

### WTML GRAND REOPENING CELEBRATION

Celebrate the Welles-Turner Memorial Library Grand Reopening with a day full of fun for all ages! Check out the fresh, new spaces and enjoy crafts, musicians, performers, refreshments, and more!

Festivities will begin at 10:00 AM on Saturday, September 17, with an outdoor ribbon-cutting ceremony and performance by the Glastonbury String Quartet. Following the presentation, families and children can enjoy a variety of programs and activities including: an exciting show by Danny Magic, custom water bottle painting with Pam's Picassos (for teens), a performance by Cover2Cover, a band who specializes in high-energy dance music from the 1960s - 80s, demonstrations of the Maker Space equipment, storytimes, visits with Elephant and Piggie, a local artist exhibit in the Gallery, and more! There will also be Pop-in enrichment programs in the tent on the front lawn from 12:00 - 4:00 PM.



Visit [www.glastonburyct.gov/WTML](http://www.glastonburyct.gov/WTML) for a schedule of activities and more!

## PROPERTY TAX EXEMPTION FOR VETERANS - FILING DUE SEPT 30

Honorably discharged veterans who have served a minimum of 90 days during wartime may be eligible for a Veteran's exemption, which would be applied to their real estate or to a motor vehicle (if no real estate is owned). Proof of military service (original DD214 discharge document) must be filed with the Town Clerk's Office on or before Sept. 30, 2022 for application on the July 2023 tax bills. Disabled Veterans who submit proof of disability to the Assessor's Office may receive an increased exemption.

Low income Veterans receiving a Veteran's exemption may be eligible to receive increased benefits by applying for the Additional Veterans Program. The income levels are \$38,100/single and \$46,400/married. The application is available at [glastonburyct.gov/vet](http://glastonburyct.gov/vet).

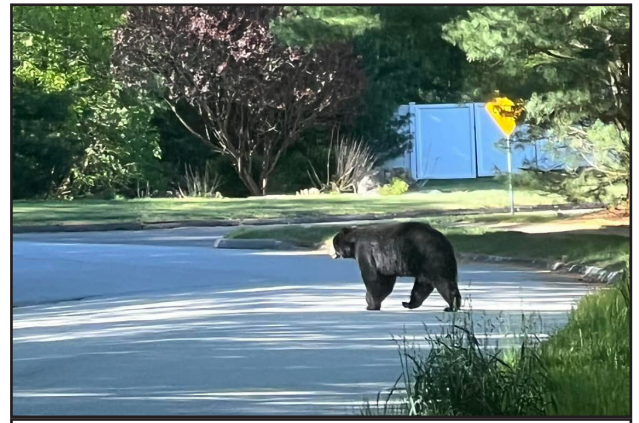
Please contact the Assessor's Office at **(860) 652-7600** or [assessor@glastonbury-ct.gov](mailto:assessor@glastonbury-ct.gov) with any questions.

## SPONSORSHIPS AT THE SPLASH PAD AT ADDISON!

This summer, Glastonbury Parks & Recreation opened a new Splash pad at Addison Pool. The new amenity has quickly become a popular destination for local families and the Glastonbury Rotary Club is seeking ongoing sponsorships to support this wonderful community park. Sponsorship levels of \$1,000, \$2,500, and \$5,000 are available and will be recognized with a permanent plaque installed at the Splash Pad. For more information, please visit the [Rotary Club website](http://RotaryClubofGlastonbury.com) or Facebook page: [www.facebook.com/RotaryClubofGlastonbury](https://www.facebook.com/RotaryClubofGlastonbury).

## COMMUNITY ALERT SYSTEM

Sign-up for the Glastonbury Alert system and receive updates regarding community emergencies and public safety matters. Through the Everbridge system, Glastonbury will provide residents with critical information regarding severe weather, missing persons, evacuations, and other emergencies affecting the local community. When there is a potential health/safety hazard or concern in the Glastonbury area, system subscribers will receive a message through their registered communication device(s) - e.g. mobile app, landline, cell phone, text, email, etc. If requested for the notification, you can confirm message receipt and you will not be contacted by any subsequent methods regarding that particular update. If you do NOT confirm, the system will continue to attempt to reach you via all of the contact paths provided upon your registration. To subscribe, visit [glastonburyct.gov/alert](http://glastonburyct.gov/alert).



## BEAR SAFETY

Bear sightings in Glastonbury have been steadily increasing since 2016. Removing food sources such as bird feeders and garbage cans will help prevent conflicts with bears. They may wander through the area, but will have no reason to stay! The Department of Energy and Environmental Protection (DEEP) web page, "[the basics of Living with Black bears](#)", has a number of useful resources.

Decisions on relocating wildlife are determined by DEEP. Please report any bear sightings to DEEP by using the [Bear sighting report form](#). Glastonbury Animal Control is interested in where the bears are sighted too, as it assists in determining the number of bears in town and the routes they're traveling. AFTER submitting the DEEP form, residents are welcome to inform Animal Control of a bear sighting by leaving a voicemail message at **(860) 633-7227**.

## DROUGHT CONDITIONS & WATER CONSERVATION

As of this writing, Windham and New London Counties are in Stage 3 (Moderate Drought) as declared by the Department of Emergency Services and Public Protection. As drying conditions continue, residents are encouraged to conserve water as possible at their residential and business properties. The CT Department of Energy and Environmental Protection (DEEP) suggests turning off water while shaving or brushing teeth, taking shorter showers, watering the lawn/garden during the earliest part of the day (or during the lowest temperatures), and running only full loads of laundry and dishes. For more homeowner water conservation tips from DEEP, [please click here](#).