

GRISWOLD GARDENS PARKING EXPANSION

239 GRISWOLD STREET
GLASTONBURY, CT

**ISSUED FOR:
SPECIAL PERMIT DESIGN REVIEW**

JUNE 03, 2022

OWNER

SIMON KONOVER COMPANY

1800 Silas Deane Hwy.
Rocky Hill, CT 06067

CONSULTANTS



120 Hebron Avenue
Glastonbury, CT 06033
P 860-633-8341
F 860-633-1068
www.Benesch.com

LIST OF DRAWINGS

-	COVER SHEET
C0.0	GENERAL INFORMATION
C1.0	SITE DEVELOPMENT PLANS AND NOTES
C2.0	SITE DETAILS

LOCATION MAP



100 0 200 400 600 feet
SCALE: 1" = 200'

GENERAL LEGEND

- MATCH LINE
- CONTRACT LIMIT LINE
- PROPERTY LINE
- SAWCUT LINE
- CURB (SEE MATERIALS PLAN FOR TYPE)
- EXISTING CATCH BASIN
- YARD DRAIN
- SIGN (SEE MATERIALS PLAN FOR TYPE)

EROSION & SEDIMENTATION CONTROL LEGEND

- SF SILT FENCE
- HB HAYBALES
- SS SILT SACKS
- RIP RAP
- CONSTRUCTION ENTRANCE
- TEMPORARY DIVERSION
- TEMPORARY SEDIMENTATION TRAP
- EROSION CONTROL BLANKET
- TEMPORARY SEDIMENTATION BASIN

DEMOLITION & SITE PREPARATION LEGEND

- CURB TO BE REMOVED
- BIT. PAVEMENT TO BE REMOVED
- CONC. PAVEMENT TO BE REMOVED
- CONSTRUCTION FENCE
- SITE ELEMENT TO BE REMOVED
- SITE ELEMENT TO BE RELOCATED
- FENCE/WALL TO BE REMOVED
- TREE TO BE REMOVED
- TREE PROTECTION

MATERIALS LEGEND

- EXPANSION JOINT
- CONTRACTION JOINT
- PAINTED HANDICAP SYMBOL
- HANDICAP RAMP TYPE A
- HANDICAP RAMP TYPE B
- FLUSH INTEGRAL CONCRETE CURB
- INTEGRAL CONCRETE CURB
- BITUMINOUS CONCRETE CURB
- BITUMINOUS CONCRETE (HEAVY DUTY)
- CONCRETE PAVEMENT (LIGHT DUTY)

LAYOUT LEGEND

- PARKING SPACE QUANTITY

PAVEMENT MARKINGS LEGEND

- WHITE LINE (4" WIDE)

GRADING LEGEND

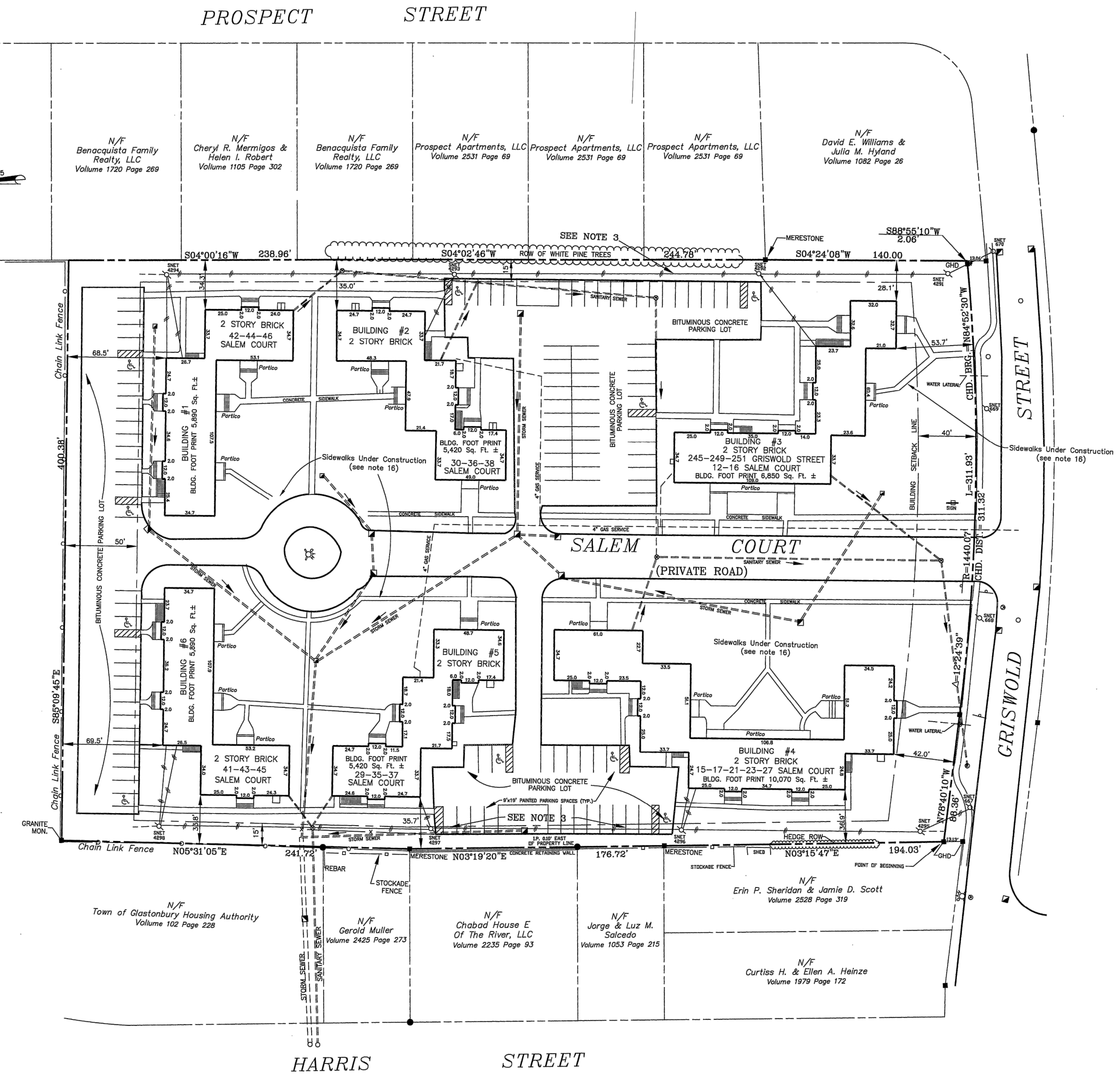
- DIRECTION OF SURFACE DRAINAGE FLOW
- PROPOSED INTERMEDIATE CONTOUR
- PROPOSED INDEX CONTOUR
- PROPOSED SPOT ELEVATION
- MATCH EXISTING SPOT ELEVATION
- FLUSH CONDITION
- ACCESSIBLE ROUTE

DRAINAGE AND UTILITIES LEGEND

- EXISTING STORM DRAINAGE PIPE
- PROPOSED CATCH BASIN
- PROPOSED DRYWELL

PLANTING LEGEND

- SHADE TREE
- ORNAMENTAL TREE
- EVERGREEN TREE
- SHRUB PLANTINGS
- QUANTITY
- PLANT TYPE KEY



ALTA SURVEY

1"=50'

Prepared by:
 Alfred Benesch & Company
 120 Hebron Avenue, 2nd Floor
 Glastonbury, Connecticut 06033
 860-633-8341

Prepared for:
SIMON KONOVER COMPANY
 1800 Silas Deane Hwy.
 Rocky Hill, CT

KONOVER GRISWOLD GARDENS PARKING EXPANSION
 30 SALEM COURT GLASTONBURY, CONNECTICUT

DATE:	REVISION:

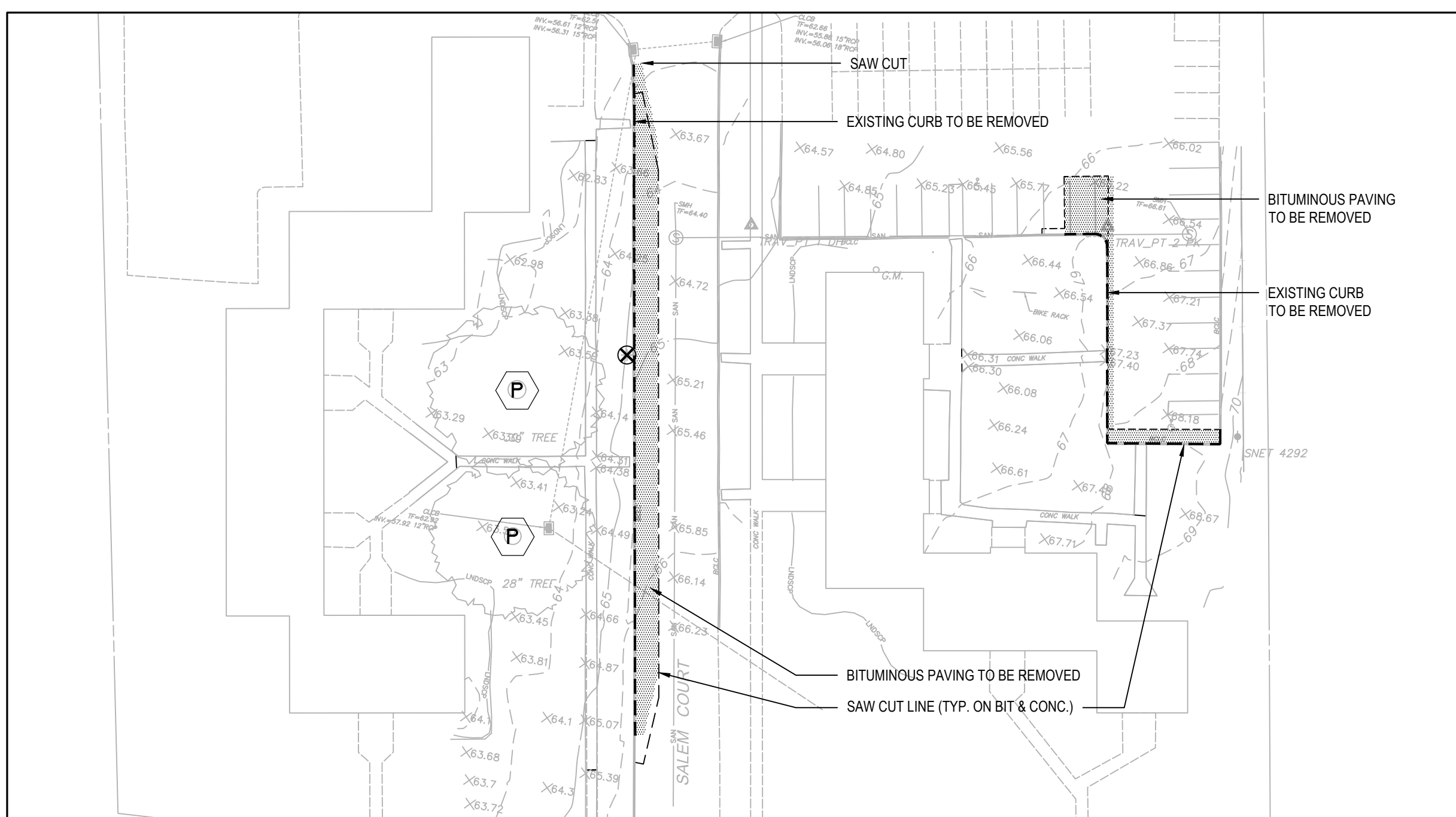
ISSUED FOR SPECIAL PERMIT DESIGN REVIEW



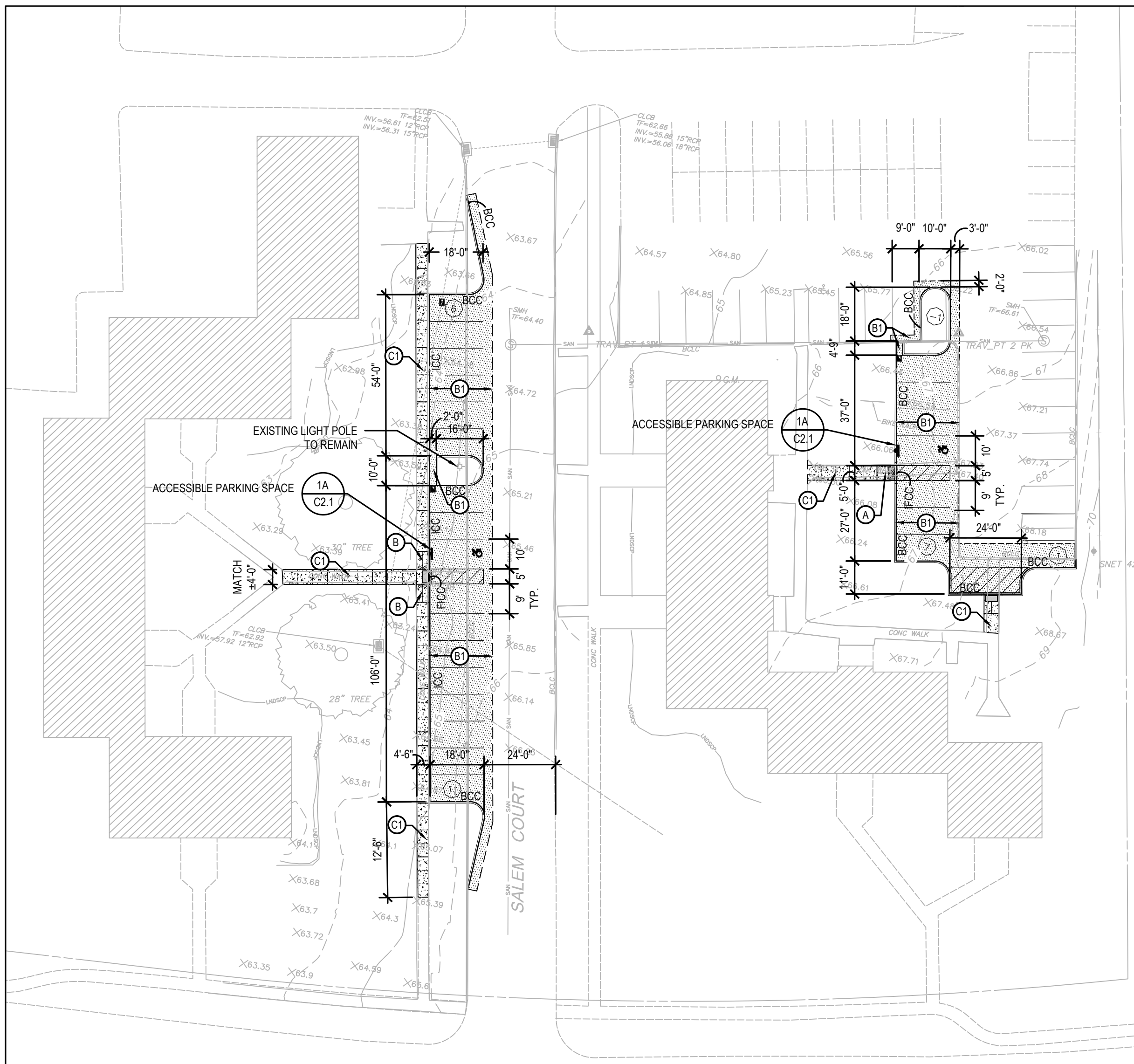
PROJECT NO.: 70637.00
 SCALE: NOT TO SCALE
 DATE: 6/03/2022
 DRAWN BY: TRS
 CHECKED BY: RGS

GENERAL INFORMATION

DRAWING NO.:
CO.0



1 DEMOLITION AND PREPARATION PLAN
1"=40'

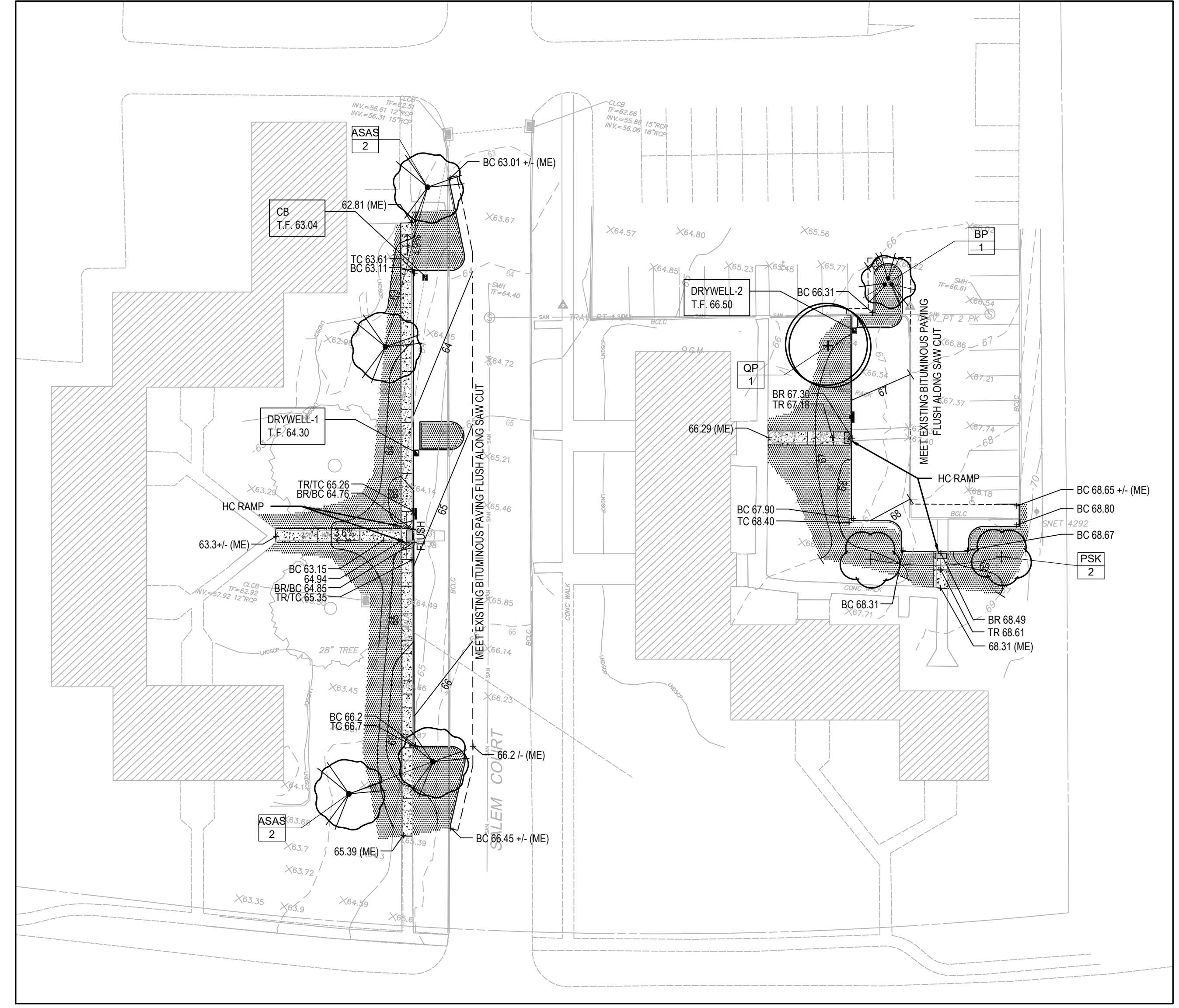


2 MATERIALS AND LAYOUT PLAN
1"=30'

PLANT SCHEDULE

DECIDUOUS TREES	CODE	QTY	BOTANICAL / COMMON NAME	ROOT	CAL.	REMARKS
	ASAS	4	ACER SACCHARUM 'AUTUMN SPLENDOR' / CADDO SUGAR MAPLE	B & B	3-3.5" CAL.	14-16' HT.
	QP	1	QUERCUS PALUSTRIS / PIN OAK	B & B	7-8" CAL.	20' MIN.

ORNAMENTAL TREES	CODE	QTY	BOTANICAL / COMMON NAME	ROOT	CAL.	REMARKS
	BP	1	BETULA PAPIRIFERA / PAPER BIRCH	B & B	MULTI-TRUNK	12-14' HT.
	PSK	2	PRUNUS SERRULATA 'KWANZAN' / KWANZAN CHERRY	B & B	4-4.5" CAL.	12-14' HT.



3 GRADING, DRAINAGE AND PLANTING PLAN
1"=30'

PARKING DATA TABLE

SPACES	TYPE
99	EXISTING STANDARD PARKING SPACES
10	EXISTING ACCESSIBLE PARKING SPACES
24	PROPOSED STANDARD PARKING SPACES
2	PROPOSED ACCESSIBLE PARKING SPACES
(-1)	EXISTING STANDARD SPACE LOST TO RECONFIGURATION
134	TOTAL PROVIDED SPACES
148	REQUIRED PARKING (100 SPACES + 48 SPACES) (50) 2 BEDROOM UNITS X 2 SPACES = 100 SPACES (32) 1 BEDROOM UNITS X 1.5 = 48 SPACES

DESCRIPTION	CHANGE IN IMPERVIOUS SURFACE AREA		
	ADDED IMPERVIOUS	REDUCED IMPERVIOUS	CHANGE
WEST NEW PARKING AREA	1538 SF	191 SF	+1347 SF
EAST NEW PARKING AREA	1867 SF	173 SF	+1694 SF
TOTAL	3405 SF	364 SF	+3041 SF

SEE SHEET C0.0
FOR LEGENDS & NOTES
RELATED TO THIS SHEET

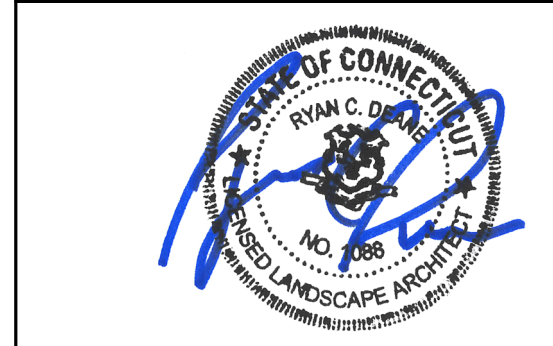
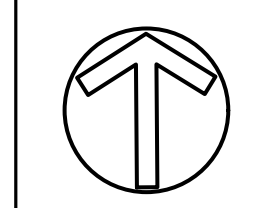
Prepared by:
benesch
Alfred Benesch & Company
120 Hebron Avenue, 2nd Floor
Glastonbury, Connecticut 06033
860-633-8341

Prepared for:
SIMON KONOVER COMPANY
1800 Silas Deane Hwy.
Rocky Hill, CT

KONOVER GRISWOLD GARDENS PARKING EXPANSION
30 SALEM COURT GLASTONBURY, CONNECTICUT

DATE:	REVISION:

ISSUED FOR SPECIAL PERMIT DESIGN REVIEW



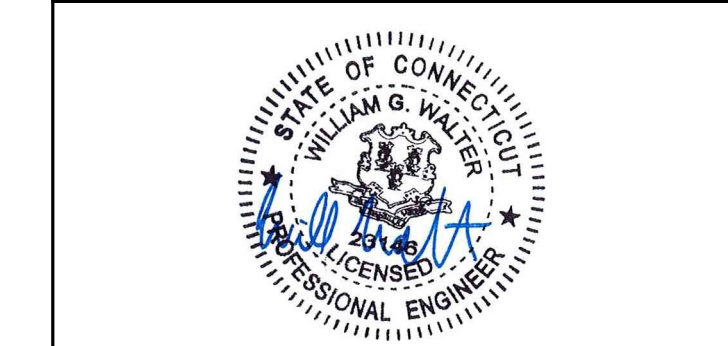
PROJECT NO.: 70637.00 DRAWN BY: RCD
SCALE: 1"=30' CHECKED BY: RCD
DATE: 6/03/2022

SITE DEVELOPMENT PLANS & NOTES

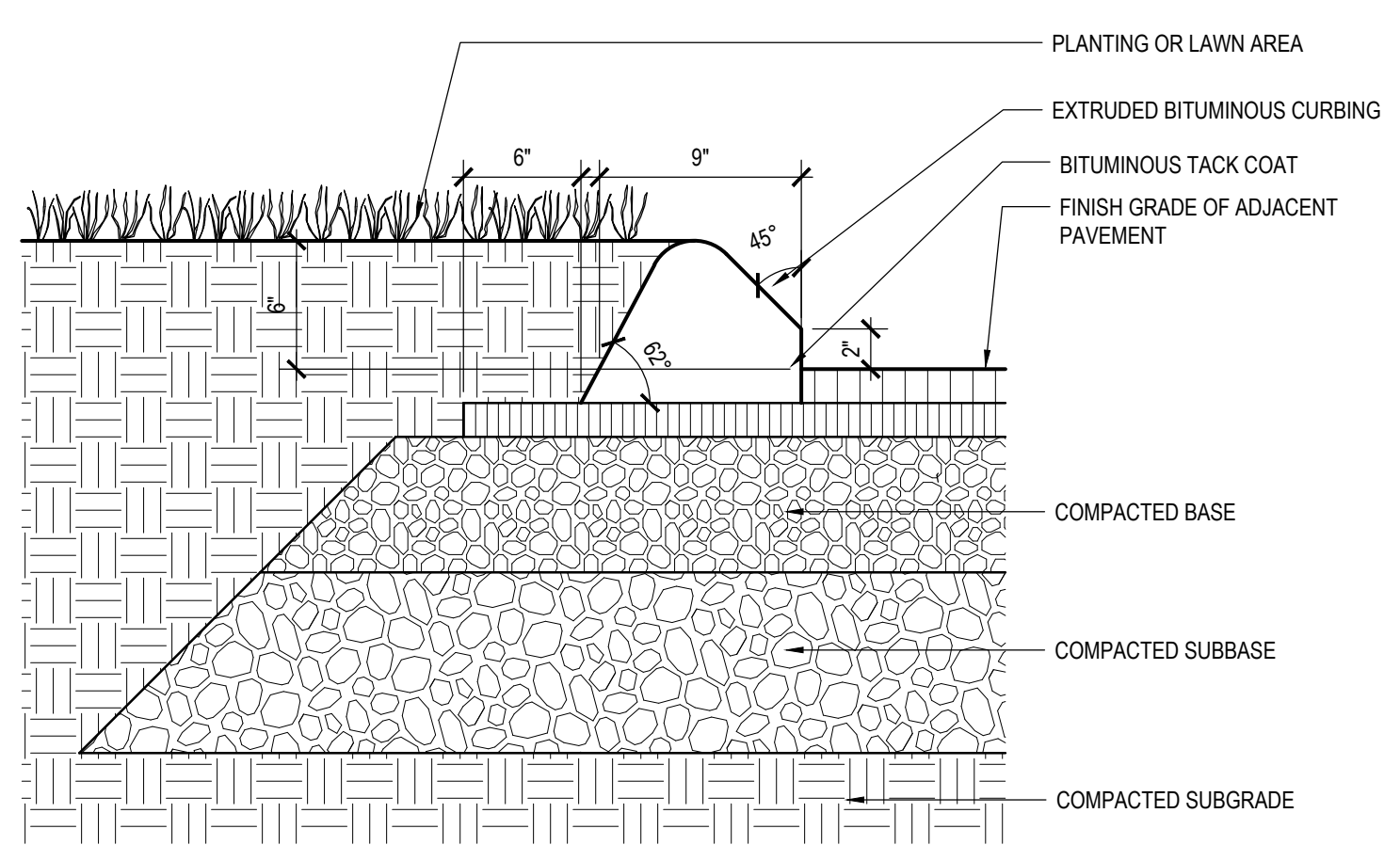
DRAWING NO.: **C1.0**

DATE:	REVISION:

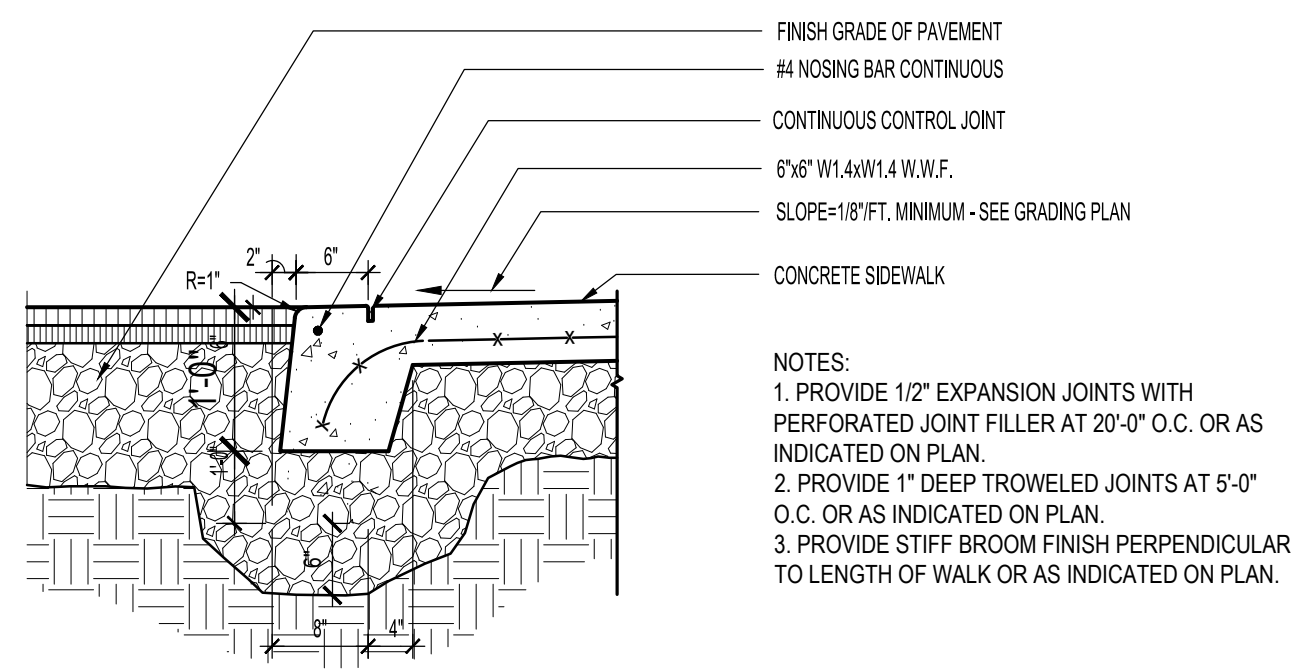
ISSUED FOR SPECIAL PERMIT DESIGN REVIEW



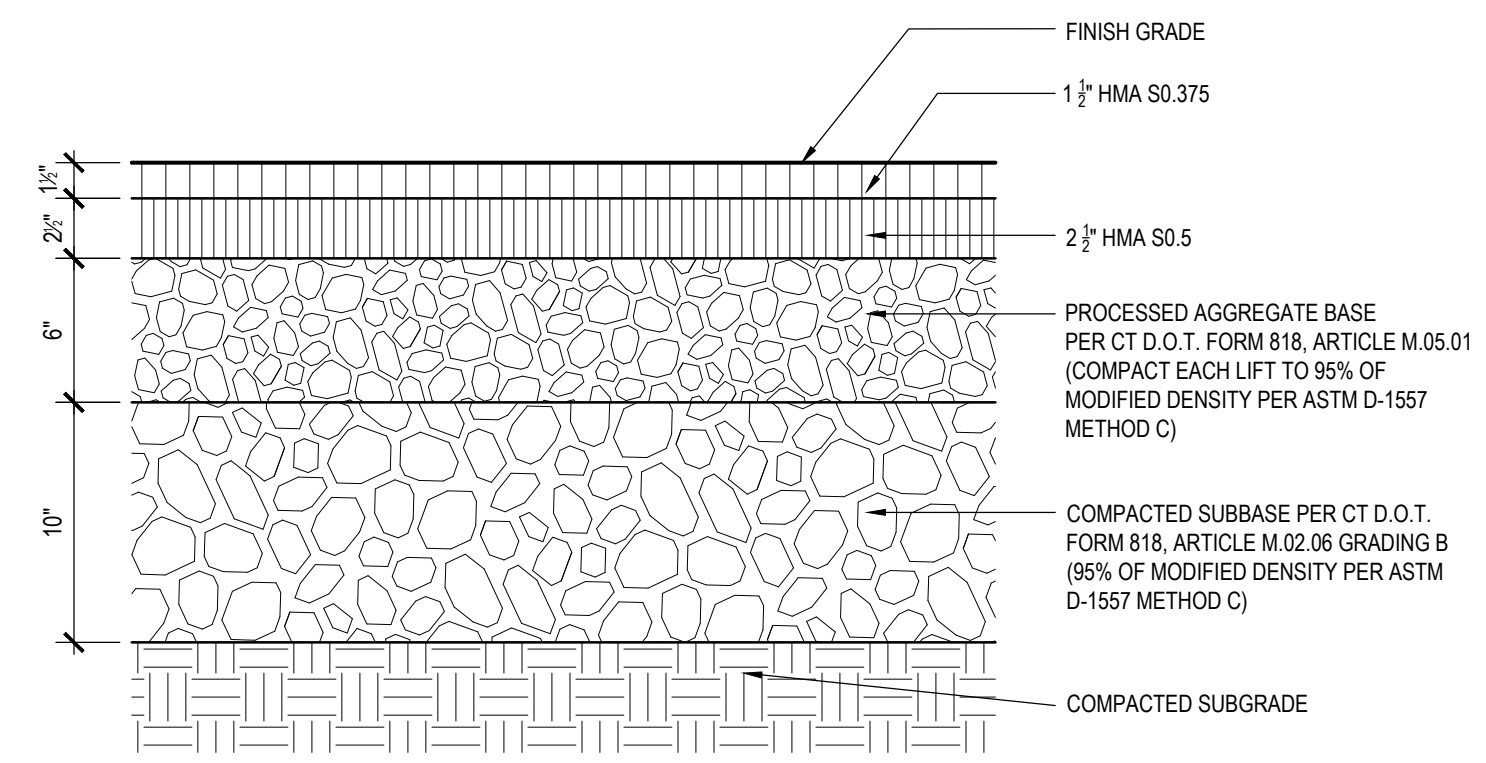
PROJECT NO.: 70637.00 DRAWN BY: GSL
 SCALE: AS SHOWN CHECKED BY: RCD
 DATE: 6/03/2022



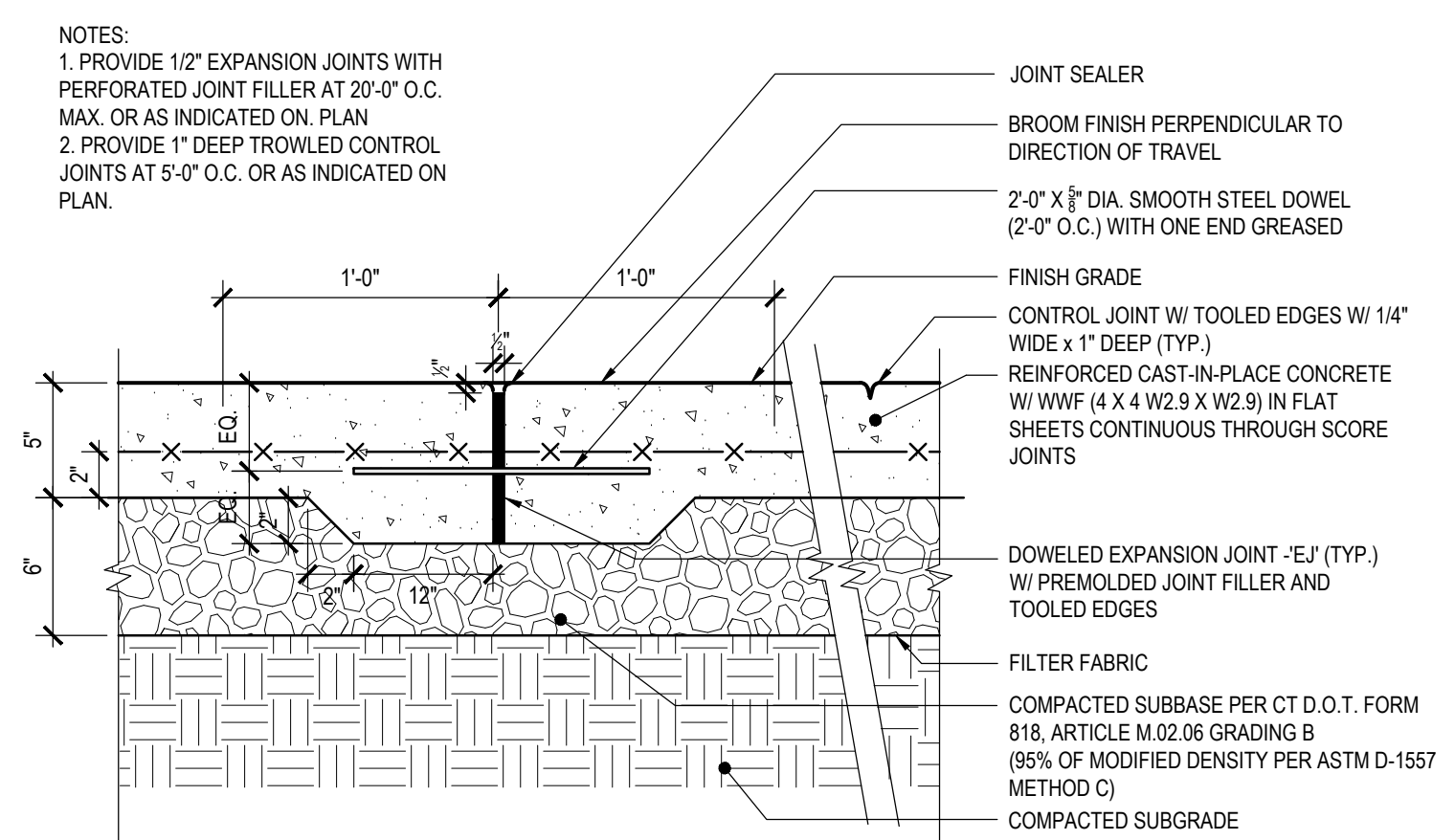
1A BITUMINOUS CONCRETE LIP CURBING (BCLC)
 1 1/2" = 1'-0"



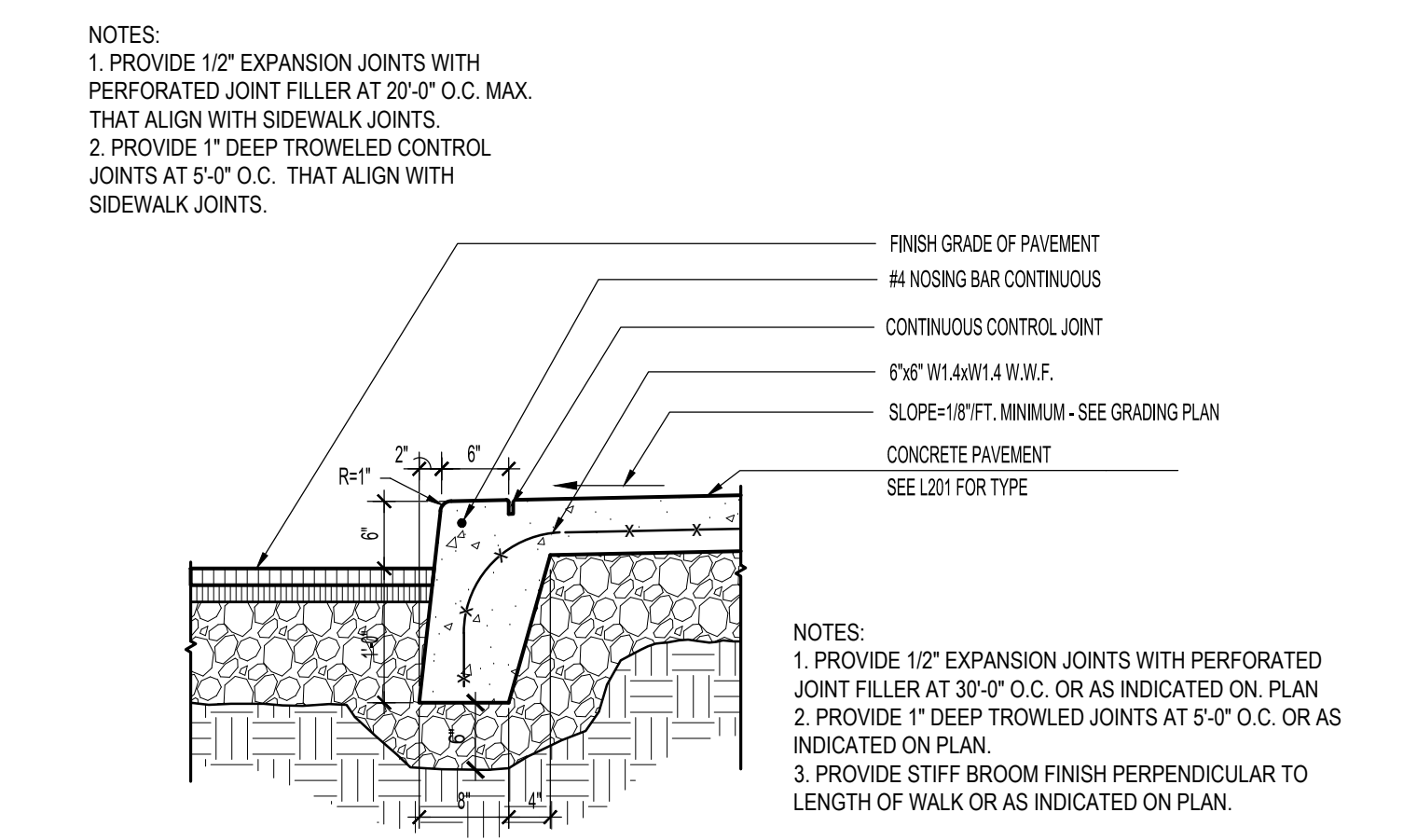
2A CAST-IN-PLACE CONCRETE FLUSH INTEGRAL CURB (FICC)
 3/4" = 1'-0"



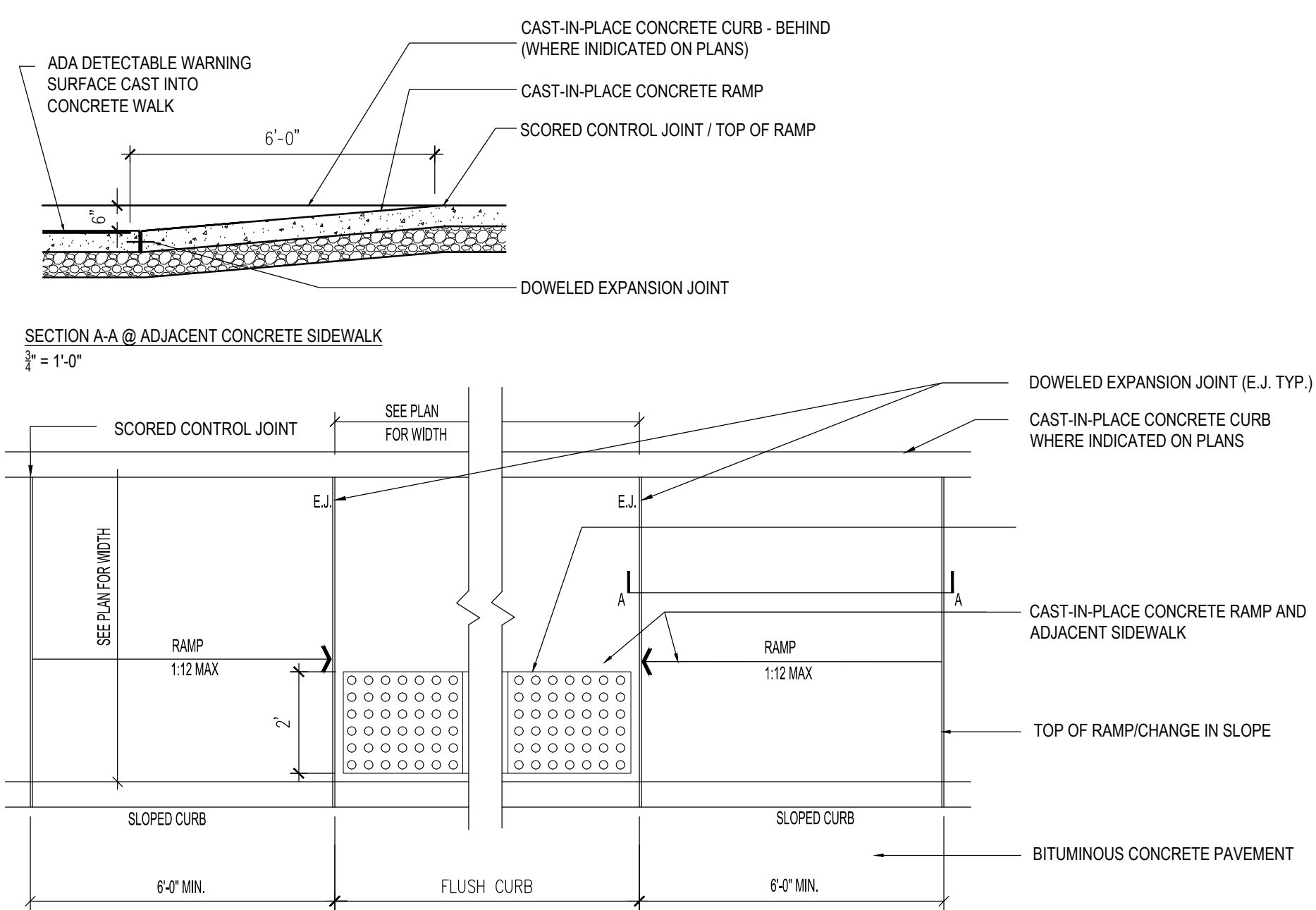
1B HEAVY DUTY BITUMINOUS CONCRETE PAVEMENT
 1 1/2" = 1'-0"



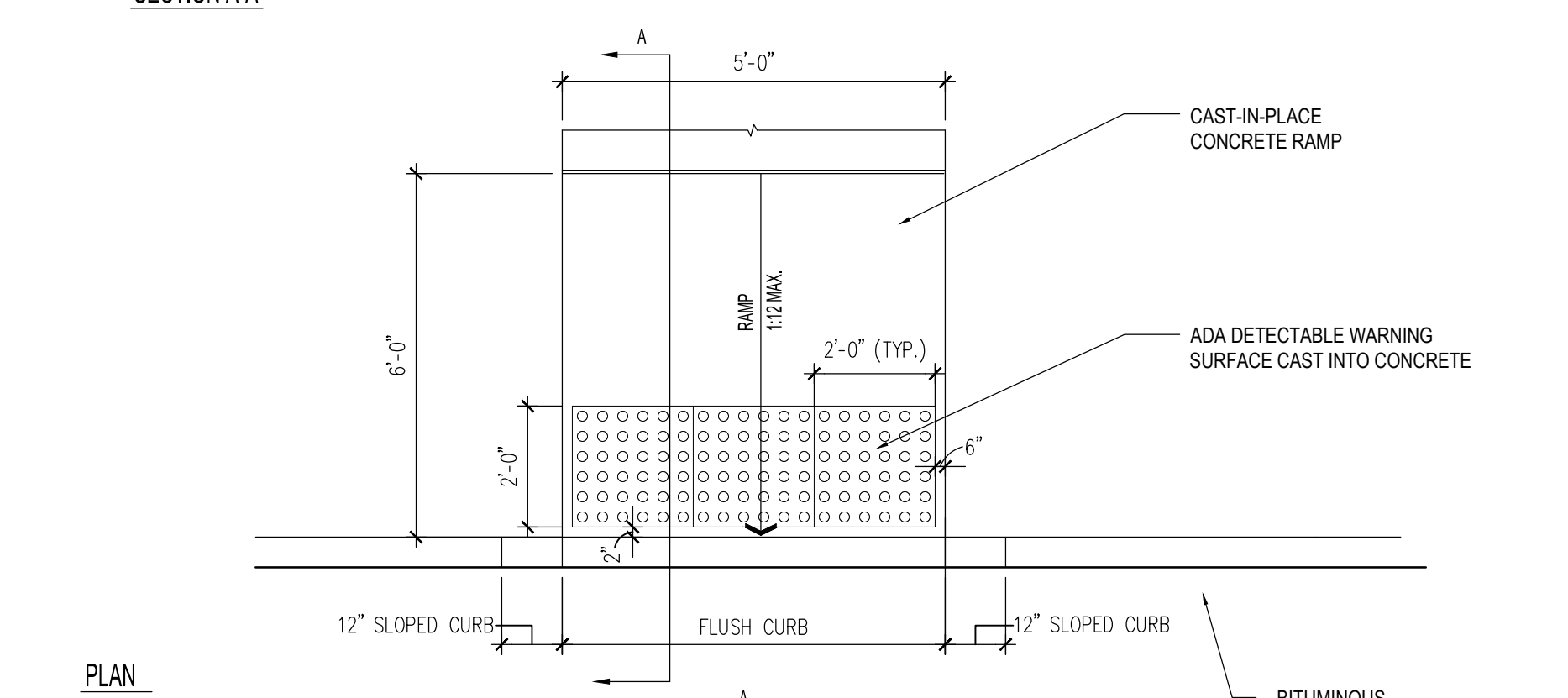
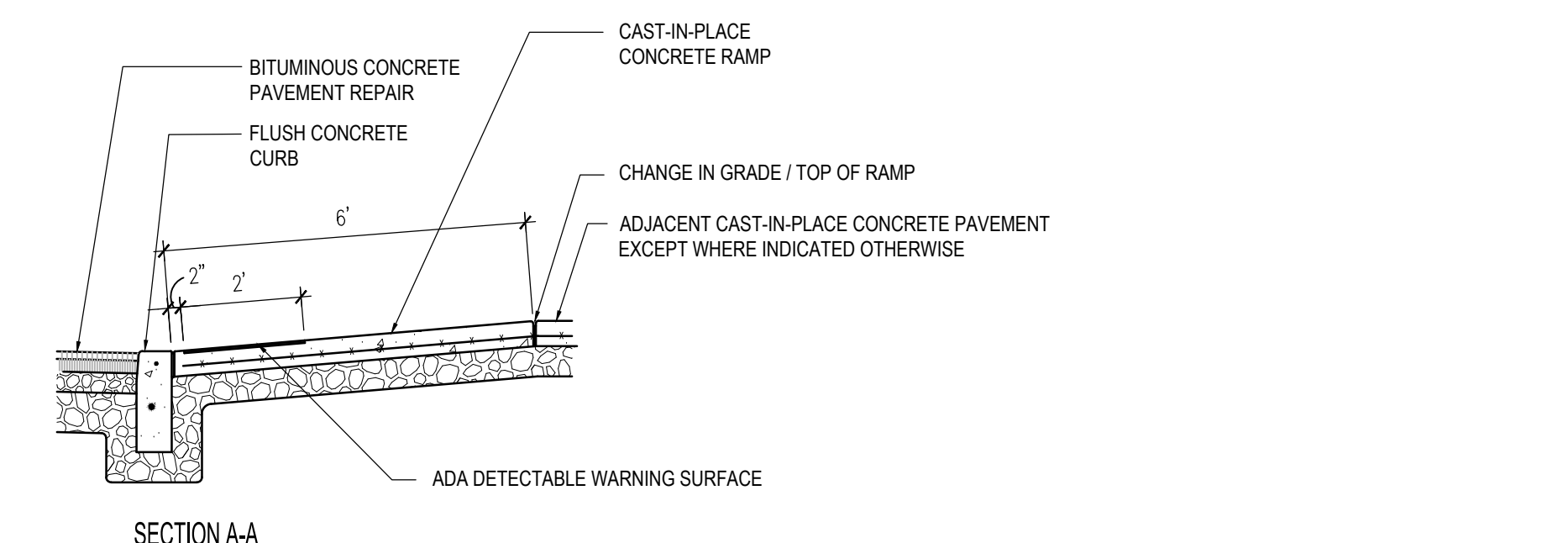
1C LIGHT DUTY CONCRETE PAVEMENT
 1 1/2" = 1'-0"



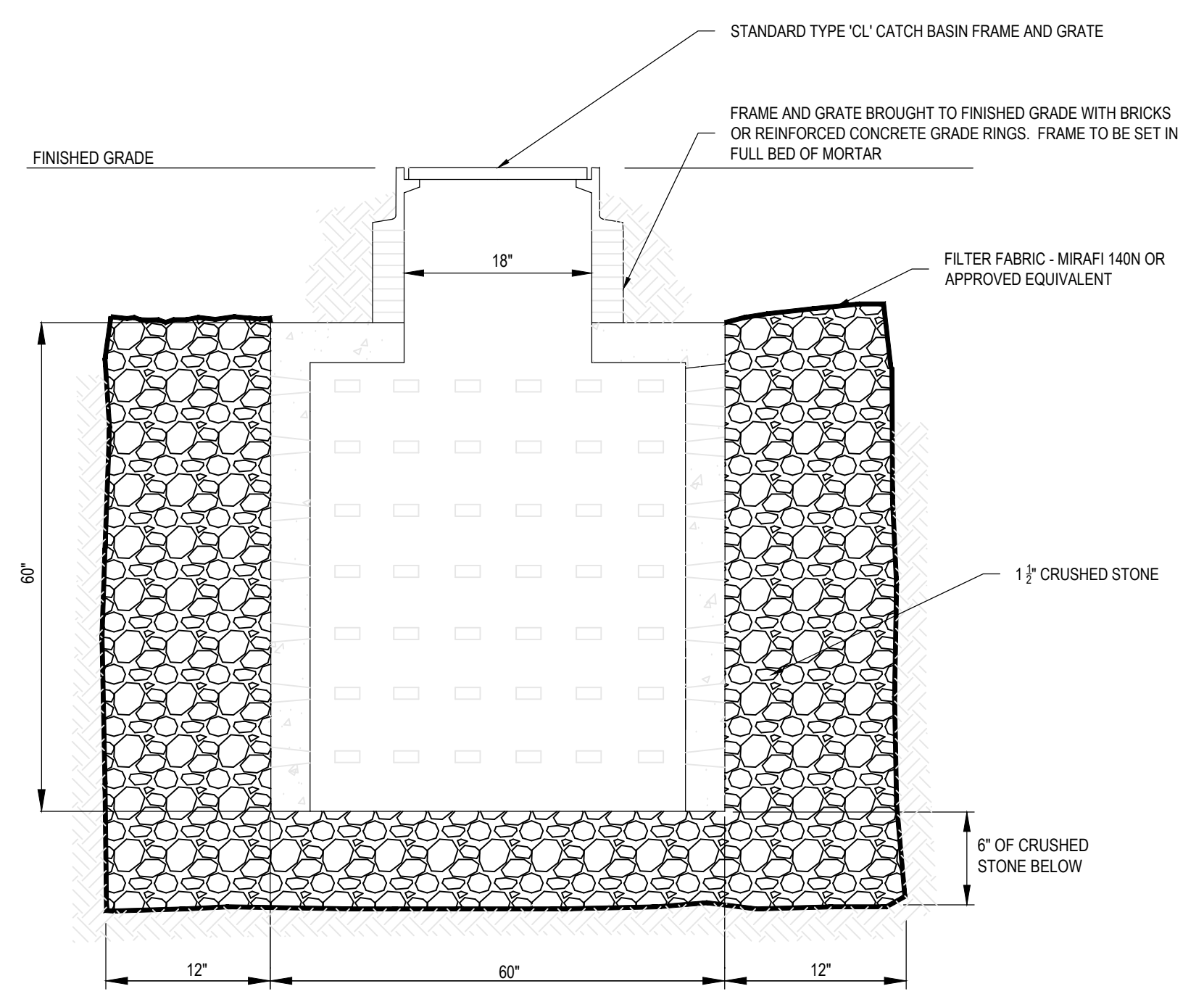
1D CAST-IN-PLACE CONCRETE INTEGRAL CURB (ICC)
 3/4" = 1'-0"



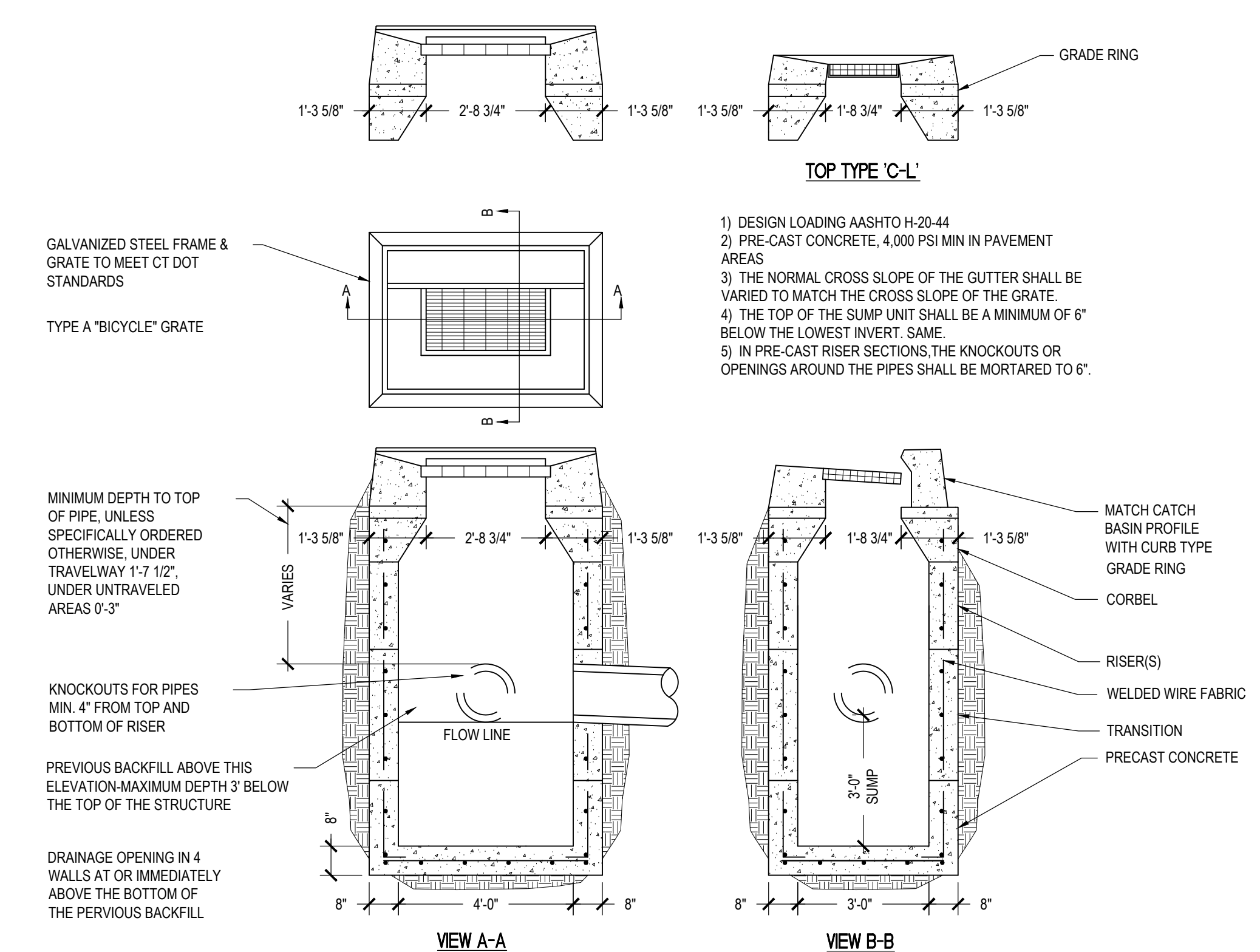
2B HANDICAP CURB RAMP - TYPE B
 3/8" = 1'-0"



2D HANDICAP CURB RAMP - TYPE A
 NOT TO SCALE



3B DRY WELL
 NONE



3D PRECAST CATCH BASIN
 3/8" = 1'-0"