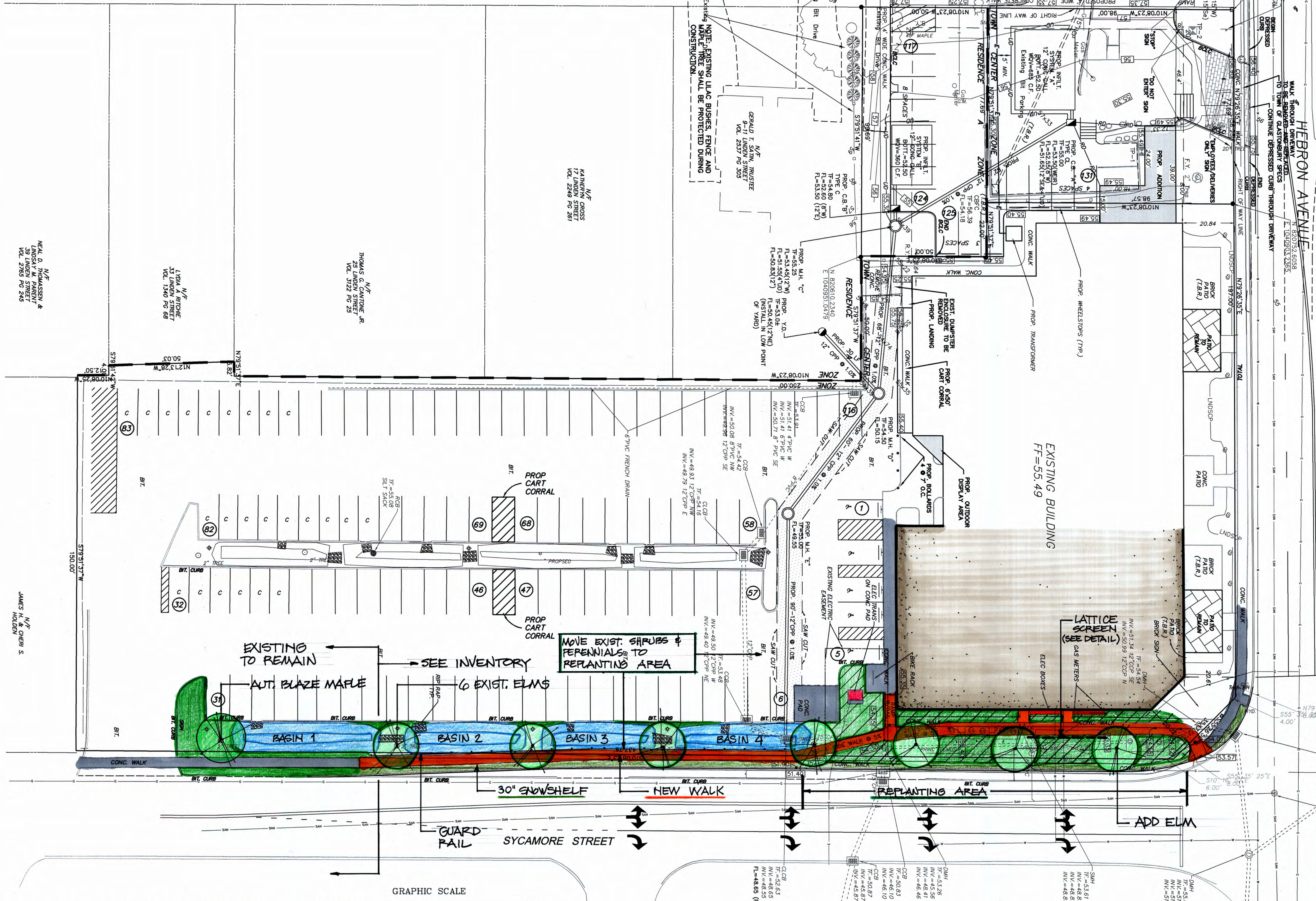


H374, LLC TOWN CENTER/RESIDENCE A
 PROJECT/APPLICANT ZONE
 400 HEBRON AVENUE
 PROJECT ADDRESS
 SPECIAL PERMIT SECTION TPZ CHAIRMAN
 DATE SPECIAL PERMIT APP'D DIRECTOR OF COMMUNITY DEVELOPMENT
 NOTE: ALL SHEETS OF THIS PLAN SET ARE LOCATED IN THE OFFICE OF COMMUNITY DEVELOPMENT FILE NO.



PARKING CHART

PREVIOUSLY APPROVED PARKING

RETAIL = 4,000 S.F. x 0.85 = 3,400 S.F. x 1/150 = 23 SPACES
 OFFICE = 2,900 S.F. x 0.85 = 2,465 S.F. x 1/150 = 8 SPACES
 RESTAURANT = 284 SEATS x 1/3 SEATS = 95 SPACES

PROPOSED PARKING REQUIREMENT

SPECIALTY GROCER = 10,646 S.F. x 1/150 = 71 SPACES
 HARTFORD BAKING CO. = 24 SEATS x 1/3 SEATS = 8 SPACES
 VACANT RETAIL SPACE = 3,886 S.F. x 1/150 = 27 SPACES

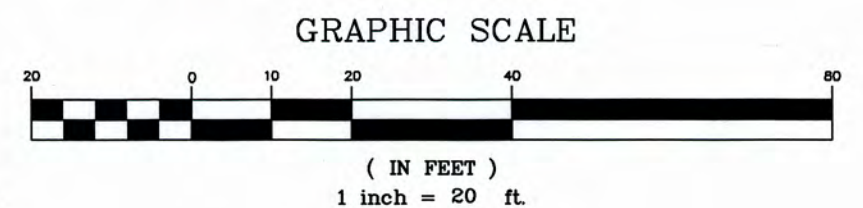
PROPOSED PARKING PROVIDED

118 EXISTING SPACES - 2 CART CORRALS = 116 SPACES
 PROPOSED EMPLOYEE PARKING = 15 SPACES
 131 SPACES PROVIDED

PLANT INVENTORY

QTY	NAME	PROPOSED USE
15	WINTR. SPRITE	REPLANT
20	REED GRASS	"
9	SHRUB ROSE	"
8	SPIREA	"
8	LIMELT. HYDR.	"
3	WINTR. RED	"
3	BAYBRY.	" ADD 3
13	CONE JFR.	REMOVE
45	SKYPCOL. HOLLY	REARRANGE
6	NEW HARMY ELM	ADD 1

RECOMMENDED LANDSCAPE IMPROVEMENTS
 BY Thomas Oraceffa Landscape Architect, LLC
 MANCHESTER, CT 06042



NOTE: VERIFY ALL UTILITY LOCATIONS IN THE FIELD PRIOR TO START OF ANY WORK (SEE NOTE BELOW).
 WARNING: THESE PLANS NOT TO BE USED FOR LOCATION OF UNDERGROUND UTILITIES - CALL BEFORE YOU DIG 1-800-922-4455 TWO WORKING DAYS BEFORE YOU DIG.

REV. 6-28-22 SYCAMORE WIDENING SHOWN
 REV. 6-28-22 REVISION CONNECTION ADDED
 REV. 5-10-22 SITE REVISIONS
 REV. 4-26-22 BUILDING ADDITION

OVERALL PARKING PLAN
PROPOSED DELIVERY AREA - 400 HEBRON AVENUE
 PREPARED FOR
H374, LLC
 GLASTONBURY, CONN.

CK. BY: MWF
 DRW. BY: JHS
 DATE: 3-30-22
 SCALE: 1"=20'
 SHEET 5 OF 11
 MAP NO. 134-21-1PA

MEGSON, HEAGLE & FRIEND
 CIVIL ENGINEERS & LAND SURVEYORS, LLC
 81 RANKIN ROAD
 GLASTONBURY, CONN. 06033
 PHONE (860)-659-0587

I HEREBY DECLARE TO THE BEST OF MY KNOWLEDGE AND BELIEF THAT THIS PLAN IS SUBSTANTIALLY CORRECT.
DRAFT
 JONATHAN H. SZUREK
 P.E. # 28858