



193

New
Parking
Area

Proposed
Addition

Reconfigured
Parking Area

2577

2533

2534

2510

MAIN STREET

2493

105

WELLES STREET

2461

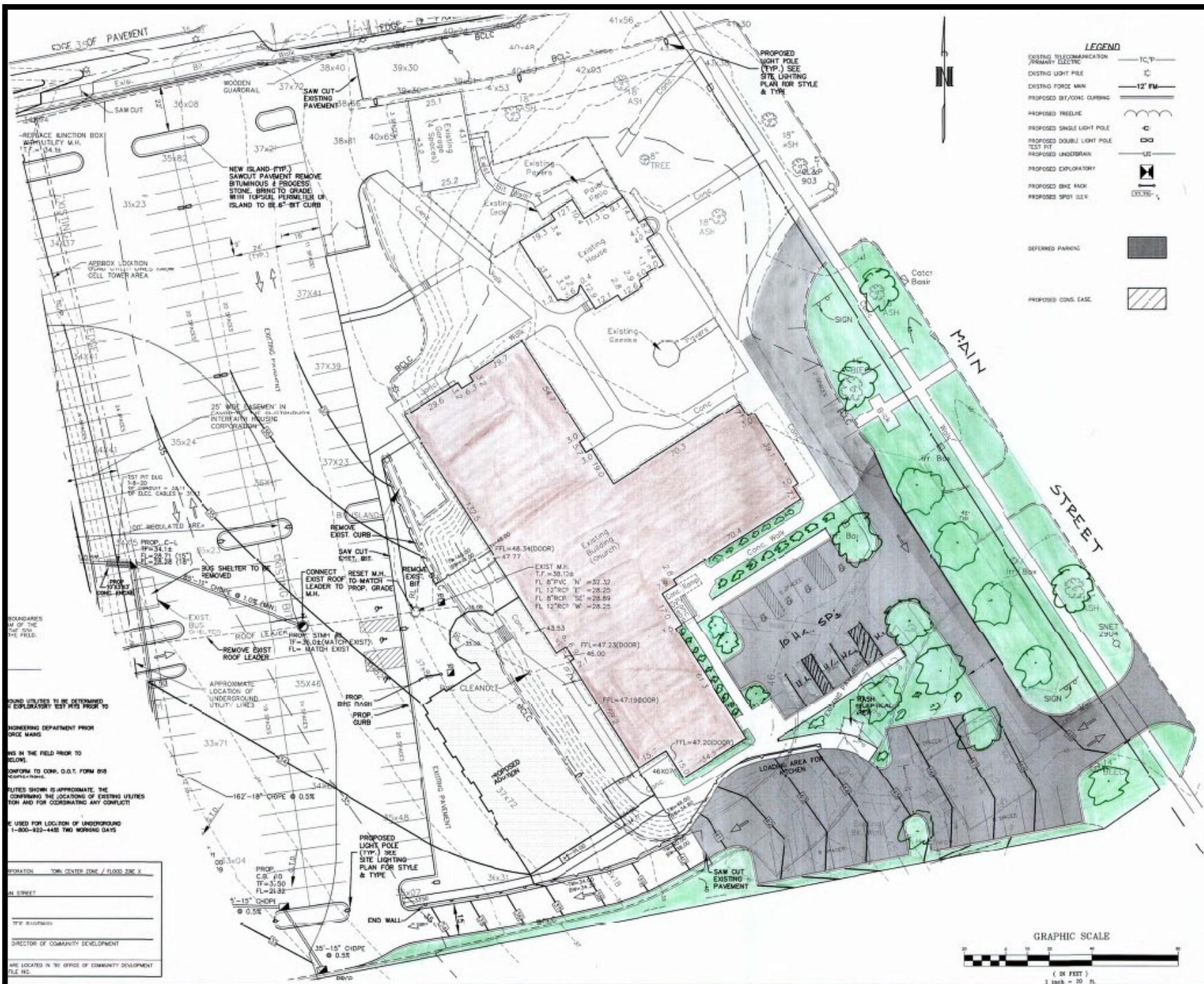
128

128

138

50 100ft

Conceptual Site Plan (Front)



BOUNDARIES AS OF THE DATE OF THE FIELD SURVEY.

FOUND UTILITIES TO BE DETERMINED BY EXPLORATORY TEST PITS PRIOR TO CONSTRUCTION.

ENGINEERING DEPARTMENT PRIOR TO CONSTRUCTION.

NOTES IN THE FIELD PRIOR TO CONSTRUCTION.

CONFORM TO CON. O.D.T. FORM 818.

UTILITIES SHOWN IS APPROXIMATE, THE CONFIRMING THE LOCATIONS OF EXISTING UTILITIES FOR AND FOR COORDINATING ANY CONFLICTS.

CALL 800-822-4452 FOR LOCATION OF UNDERGROUND UTILITIES.

DATE: 10/15/2024

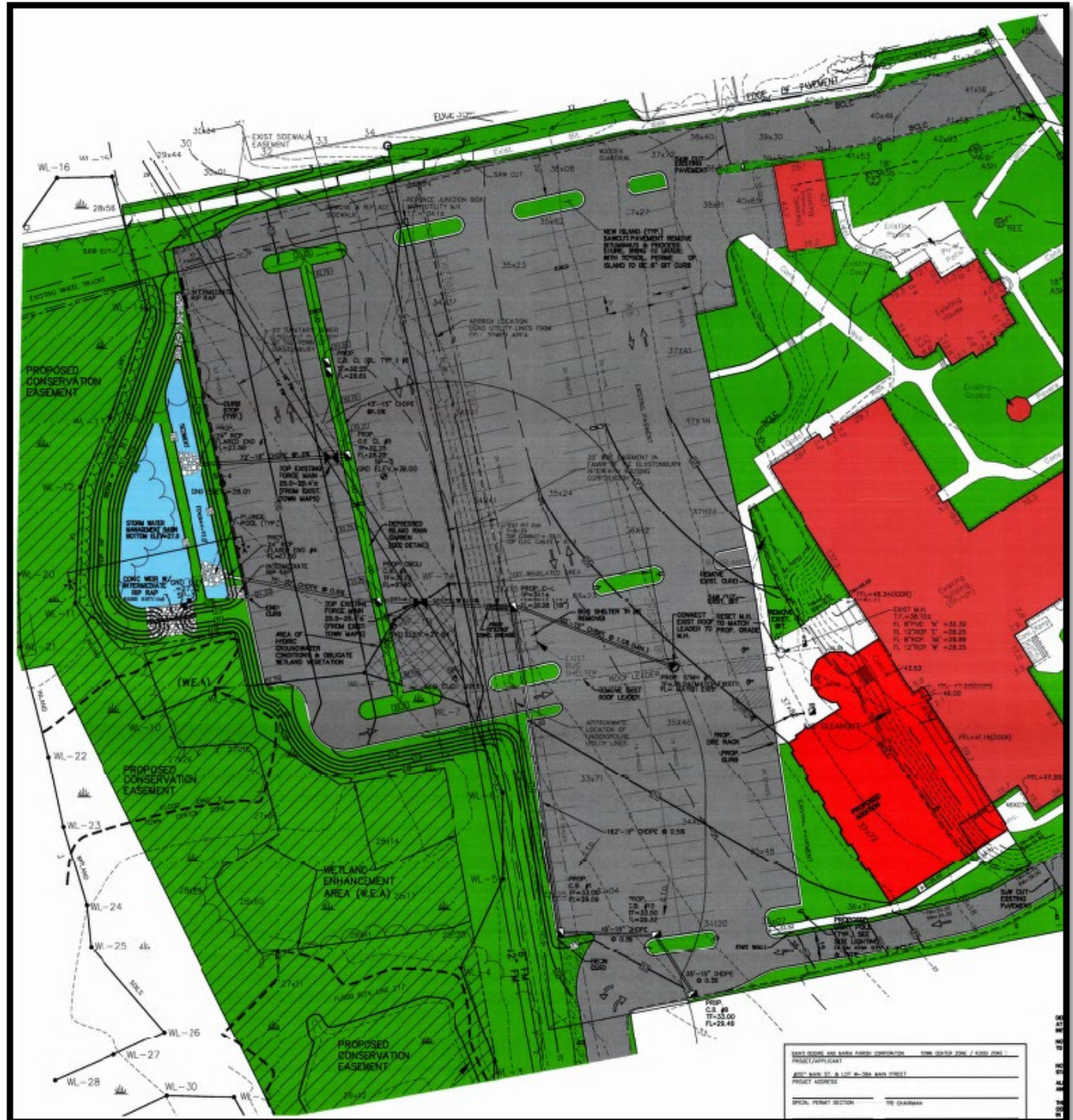
BY: [Signature]

TITLE: [Blank]

DIRECTOR OF COMMUNITY DEVELOPMENT

THE PROJECT IS LOCATED IN THE OFFICE OF COMMUNITY DEVELOPMENT FILE NO. [Blank]

Conceptual Site Plan (Rear)



Existing Conditions (Rear)





Conceptual Landscape Plan (Front)

PROJECT/APPLICANT: _____ ZONE: _____

PROJECT ADDRESS: _____

SPECIAL PERMIT SECTION: T22 CHARISMA

DATE SPECIAL PERMIT APPLD: _____ DIRECTOR OF COMMUNITY DEVELOPMENT: _____

NOTE: ALL SHEETS OF THIS PLAN SET ARE LOCATED IN THE OFFICE OF COMMUNITY DEVELOPMENT FILE NO. _____



- 10' DBH TREE
- PROP TREE
- PROP MED TREE
- PROP MULTI-STEM
- PROP EVERGREEN TREE
- PROP SHRUB
- PROP FLWR SHRUB
- PROP DIV. HEDGE
- PROP GR. COVER PERENNIALS



I HEREBY BEGARE TO THE BEST OF MY KNOWLEDGE AND BELIEF THAT THIS PLAN IS SUBSTANTIALLY CORRECT.

THOMAS G. GRACIEFFA PLA# 1407

Thomas Graciffa Landscape Architect, LLC
 19 Tling Drive Manchester, Connecticut 06042
 812-742-1950
 thomasgraciffa@gmail.com

PRELIMINARY PLANTING PLAN
 PREPARED FOR:
SAINTS ISIDORE AND MARIA PARISH CORPORATION
 EASTONBURY, CONNECTICUT

REVISED: _____

DATE: 5/6/2022

SHEET: 1/1

Conceptual Landscape Plan (Rear)

PLANT SCHEDULE

PARKING LOT TREES						
Key	Scientific Name	Common Name	Size	Spacing	COND	QTY
Trees						
AOG	ACER RUBRUM	October Glory / Red Maple	2-2 1/2'	N/A	B+B	9
WETLAND TREES						
Trees	(select minimum 3 species)		Size	Spacing	COND	
AR	Acer rubrum	Red Maple	6'	25'	B+B	17 TOTAL
CF	Cornus florida	Flowering Dogwood	6'	25'	B+B	
NS	Nyssa sylvatica	Black Gum	6'	25'	B+B	
pv	Prunus virginiana	Chokecherry	3-4'	25'	B+B	
QB	Quercus bicolor	Swamp White Oak	6'	25'	B+B	
SLOPE/EDGE SHRUB ZONE						
Shrubs	(select minimum 10 species)		Size	Spacing	COND	
Ac	Artemisia canadensis	Shadblow	3-4'	10'	CONT.	50 TOTAL
AA	Arcia arbutifolia	Red Chokeberry	3-4'	10'	CONT.	
CEA	Ceanothus americana	New Jersey Tea	18-24"	10'	CONT.	
CO	Cephalanthus occidentalis	Buttonbush	3-4'	10'	CONT.	
CL	Clethra alnifolia	Sweet Pepperbush	3-4'	10'	CONT.	
CS	Cornus sericea	Red-osier Dogwood	3-4'	10'	CONT.	
DL	Diervilla lonicera	Northern Bush Honeysuckle	18-24"	10'	CONT.	
IV	Ilex verticillata (female)	Winterberry	3-4'	10'	CONT.	
IVM	Ilex verticillata (male)	Winterberry	3-4'	10'	CONT.	
MP	Morella pensylvanica	Bayberry	18-24"	10'	CONT.	
SC	Sambucus canadensis	Common Elderberry	3-4'	10'	CONT.	
SD	Salix discolor	Pussy Willow	3-4'	10'	CONT.	
SL	Spiraea latifolia	Meadowsweet	3-4'	10'	CONT.	
Vc	Vaccinium corymbosum	Highbush Blueberry	3-4'	10'	CONT.	
VD	Viburnum dentatum	Arrowwood	3-4'	10'	CONT.	
VL	Viburnum lentago	Nannyberry	3-4'	10'	CONT.	
RAIN GARDEN & STORMWATER BASIN						
Herbs	(select minimum 10 species)		Size	Spacing		
	Asclepias tuberosa	Butterfly Weed	2" plugs	3'	FAC J	rain garden
	Lupinus perennis	Lupine	2" plugs	3'	UPL	rain garden
	Asclepias incarnata	Swamp Milkweed	2" plugs	3'	OBL	basin
	Aster novae angliae	New England Aster	2" plugs	3'	FAC/W	basin
	Carex crinita	Fringed Sedge	2" plugs	3'	OBL	basin
	Carex vulpinoidea	Fox Sedge	2" plugs	3'	OBL	basin
	Eupatorium maculatum	Spotted Joe-oye Weed	2" plugs	3'	FAC/W	rain garden
	Iris versicolor	Blue Flag	2" plugs	3'	OBL	basin
	Jurcus efusus	Soft Rush	2" plugs	3'	OBL	basin
	Lobelia cardinalis	Cardinal Flower	2" plugs	3'	FAC/W+	rain garden or basin
	Monarda fistulosa	Wild Bergamot	2" plugs	3'	UPL	rain garden
	Penstemon digitalis	Smooth Beardtongue	2" plugs	3'	OBL	rain garden
	Rudbeckia laciniata	Cut-leaf Coneflower	2" plugs	3'	FAC/W	basin
	Veronica noveboracensis	New York Ironweed	2" plugs	3'	FAC/W	basin
	Zizia aurea	Golden Alexanders	2" plugs	3'	FAC	rain garden or basin
	Pontederia corcata	Pickeralweed	2" plugs	3'	OBL	basin
	Sagittaria latifolia	Northern Arrowhead	2" plugs	3'	OBL	basin
	Scirpus c. perinus	Wool Sedge	2" plugs	3'	OBL	basin
	Sparganium americanum	Burreed	2" plugs	3'	OBL	basin
Area	Size (square feet)	Total				
Basin bottom	4750	609				
rain garden	1990	166				

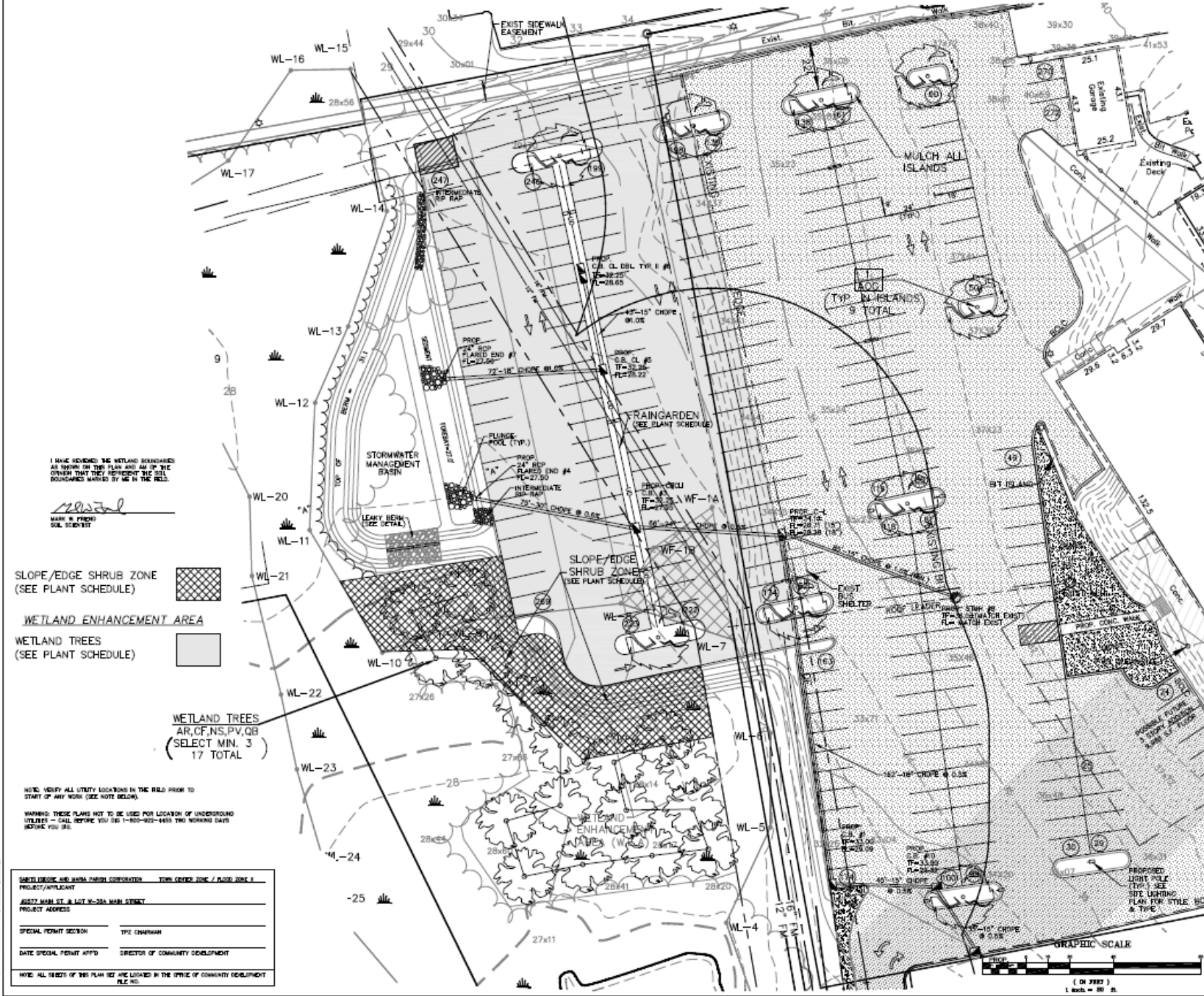




IMAGE 1



IMAGE KEY



IMAGE 2



IMAGE 3



IMAGE 4



IMAGE 5



IMAGE 6



IMAGE 7



IMAGE 8



IMAGE 9



IMAGE 10



IMAGE 11



IMAGE 12



IMAGE 13



IMAGE 14

IMAGE 4: 9:10 PM C:\Users\jw\Documents\JUNE_PDC_ARCH\JUN04E.A

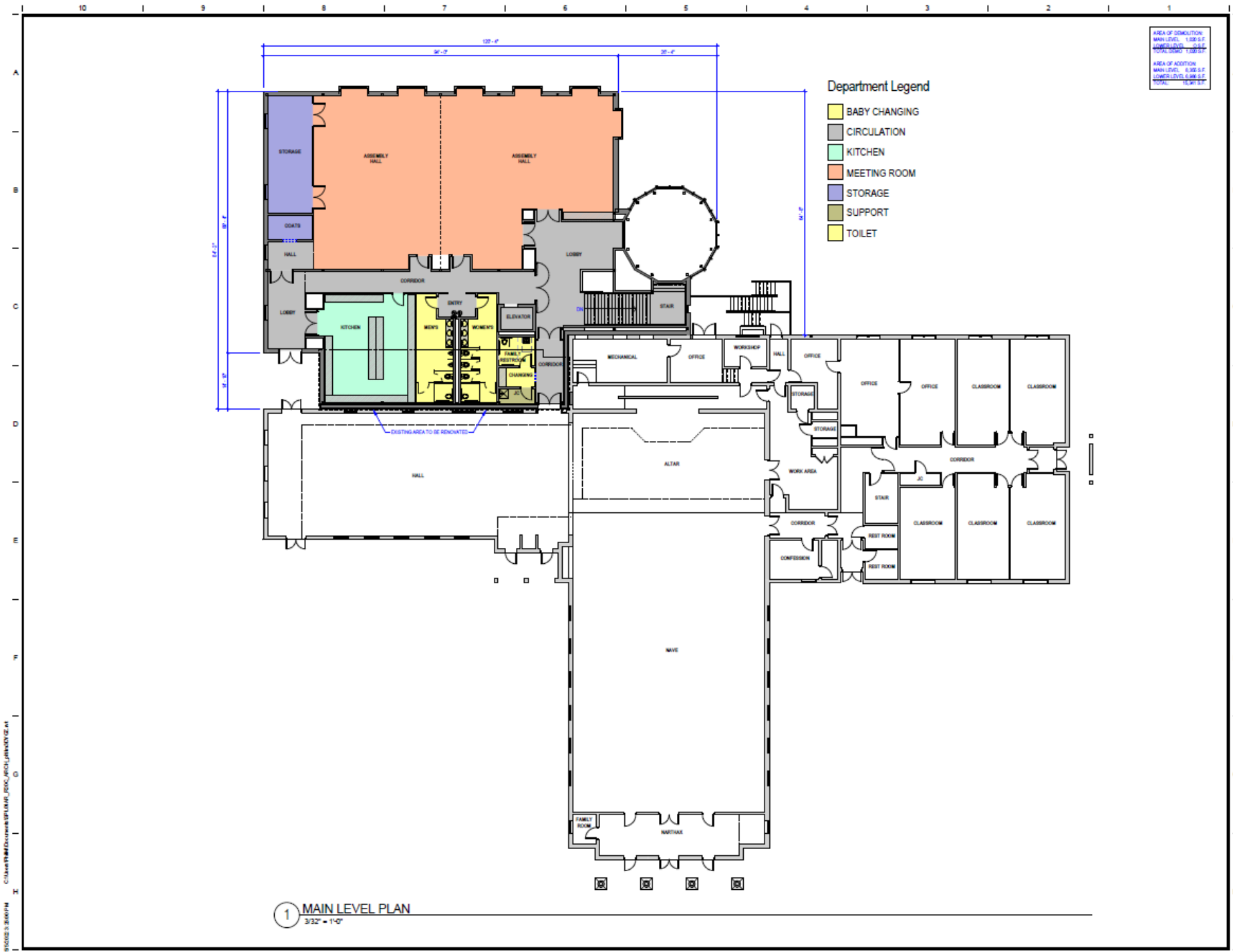
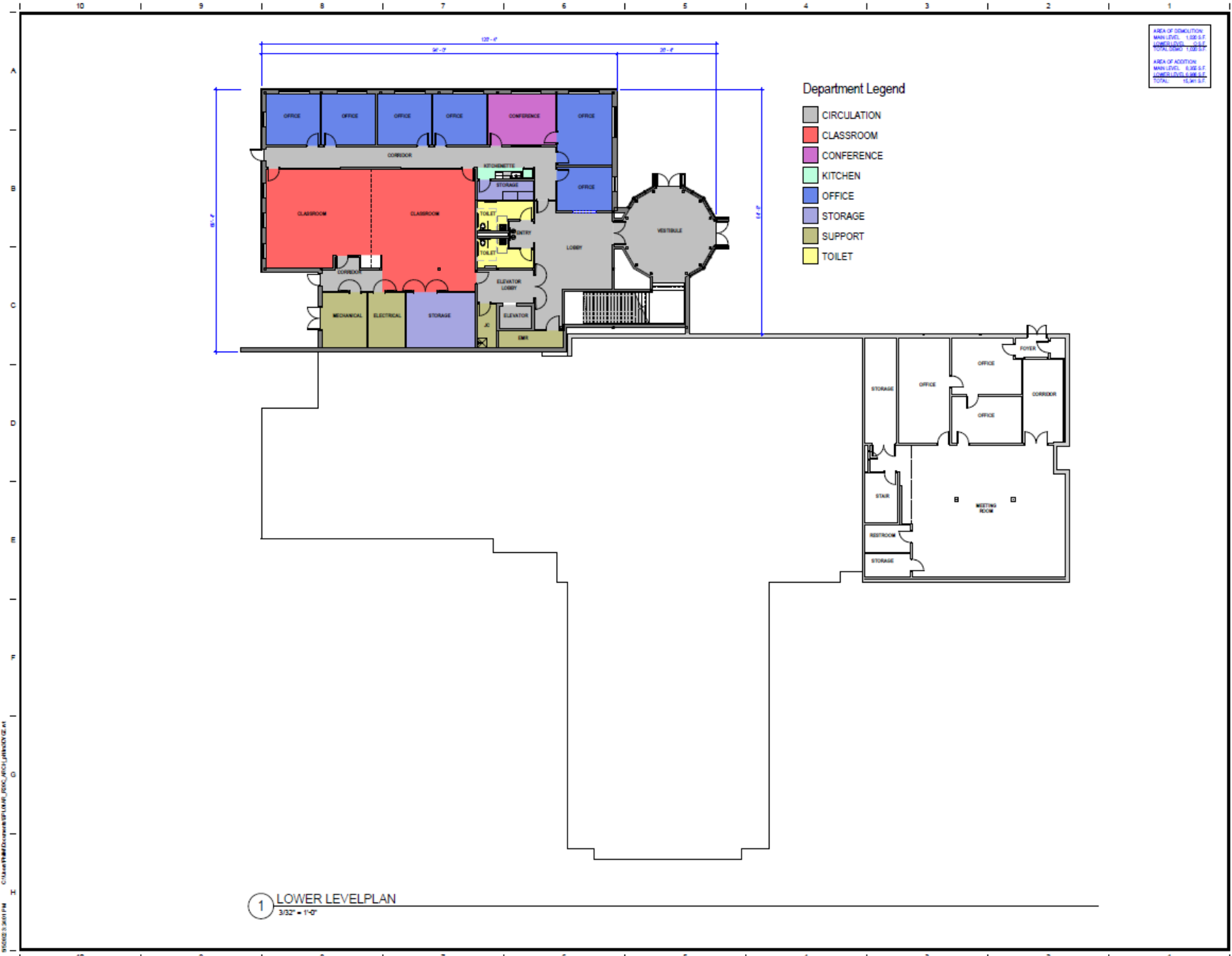


FIGURE 3.3607M C:\Users\jacob@delawareplanning.com\Documents\PLANNING\PROJECTS\ARCHITECTURE\AT



C:\Users\TMM\Documents\PLUMB_EDC_INCL\REVISED.dwg