

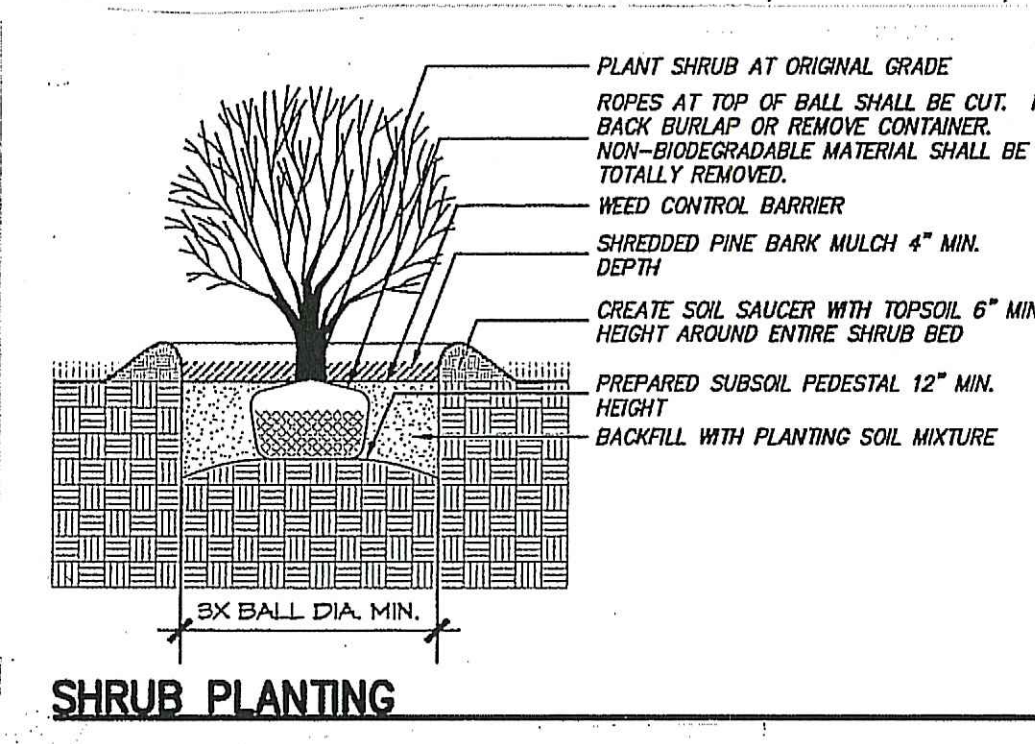
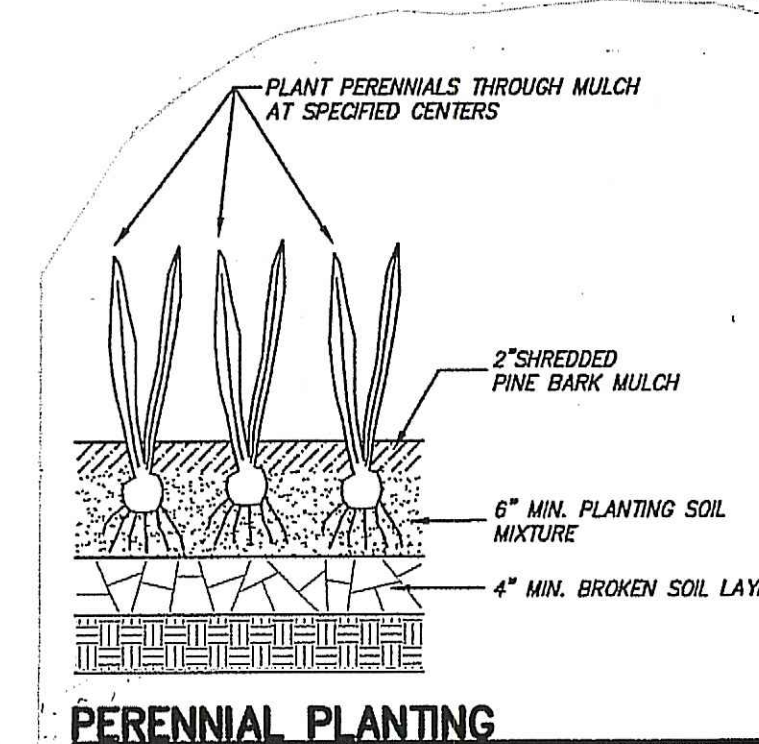
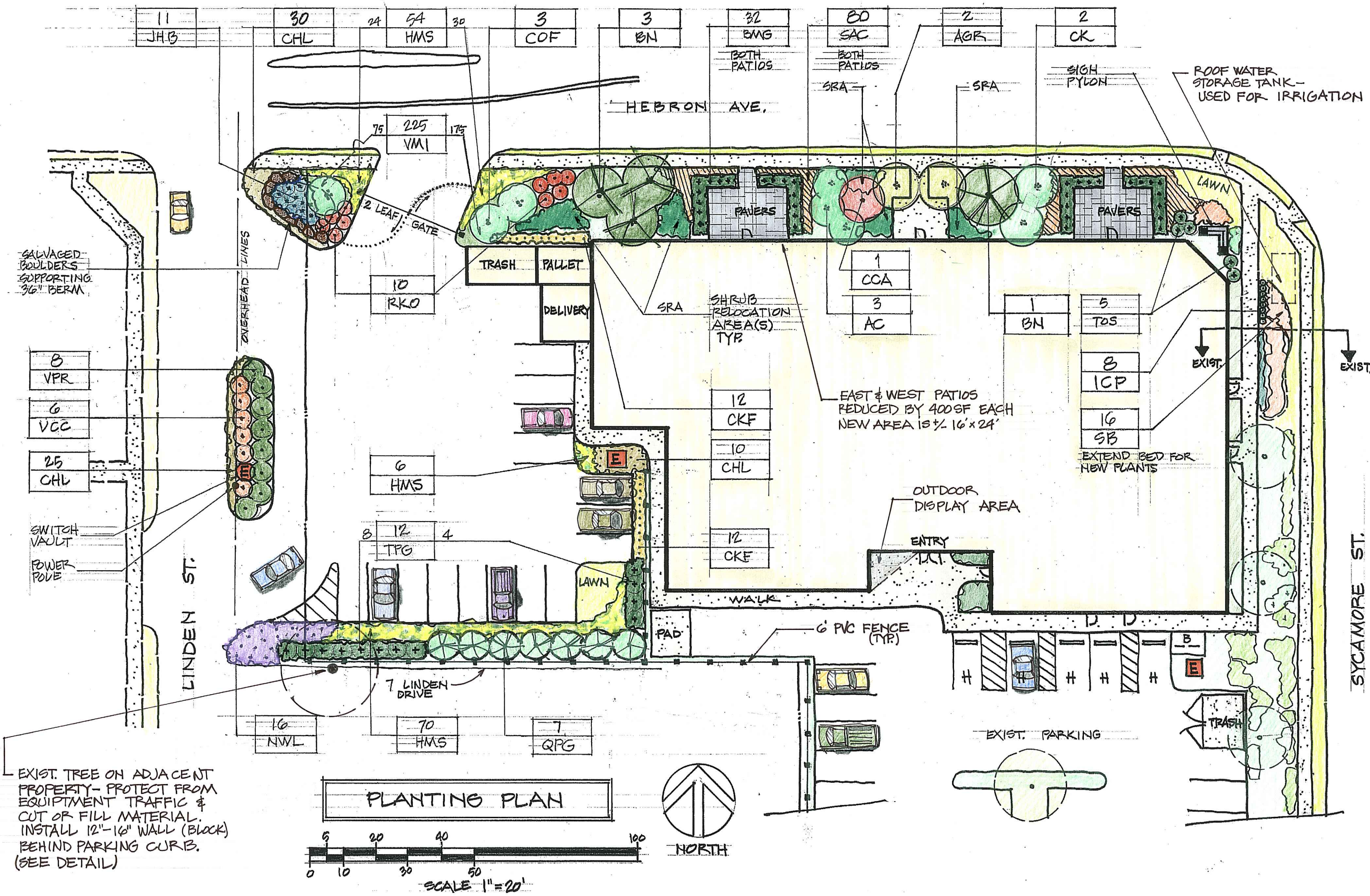
PLANTING NOTES

- All plant materials shall conform to the guidelines established by the American Nursery & Landscape Association.
- All disturbed areas not covered by buildings, or planting shall be sodded lawn. New lawn areas shall receive a minimum of 6" of the proper pH and organic content suitable for the healthy growth of lawns. Contractor will be responsible for mowing and watering during the guarantee period. Lawn areas shall be guaranteed for 60 days or second cutting, whichever is later.
- Contractor shall set plants out in field for approval of locations by Landscape Architect prior to planting.
- Spade edge all planting beds within lawn areas. Provide clean spaded edge at perimeter of all planting beds and tree pits adjacent to lawn areas. Spade edge of newly planted lawn areas following second mowing.
- All trees, shrubs, and perennial beds to receive approved mulch to depths indicated in planting details.
- Install 4" plastic (snow fence) at dripline of all existing trees to remain. Insure no heavy vehicle traffic or storage of soil or building materials occur. Remove fencing for final grading.
- Where discrepancies occur between planting quantities or types shown on plan and in the Plant List, the quantity of plantings shown on plan shall prevail.
- Landscape Contractor shall guarantee all plant material for one (1) full year from date of acceptance. Proper landscape maintenance shall be the responsibility of the owner.
- Shade trees shall have a branching height of five (5) minimum. Trunks of deciduous trees shall be wrapped immediately after planting with tree wrap. Wrap shall be wound spirally, from the bottom of the trunk to the second branches. All trees in windy areas shall be staked or guyed immediately after planting.
- All tree and shrub pits shall be at least 3X wider and 2X deeper than the tree or shrub root ball to be planted in it. Backfill planting soil mix shall be: 4 parts topsoil, 1 part peat moss, and 1 part compost. Topsoil will be of the proper pH and organic content suitable for healthy plant growth.
- All areas to be mulched shall receive 4 inches minimum 100% shredded bark mulch within 48 hours of planting unless otherwise noted in planting details.
- Plants shall be handled at all times in accordance with the best horticultural practices. Plants in-leaf shall be sprayed with anti-desiccant before digging. Plants shall be dug with firm natural balls and shall conform to the ratios and sizes specified in ANSI Z60.1. B&B plants shall be wrapped in burlap and tied firmly. Plant materials shall be delivered immediately prior to placement, shall be kept moist, and shall be protected from sun and wind. Plants having broken or cracked balls prior to or during planting will not be accepted.
- The period for planting shall be from March 15 to May 15 and from September 15 to November 15, weather permitting.
- All locations of existing utilities may not be shown on this plan. See other plan sheets for utility locations. Contractor shall be solely responsible for determining actual locations of existing utilities. Utility conflicts may require adjustments to proposed construction. Contractor shall be responsible for repair of any utilities damaged during construction. Contact call before you dig 1-800-922-4455 www.ct.gov at least two (2) working days before starting construction to locate utilities.

PLANT LIST

KEY	QTY	BOTANIC NAME COMMON NAME	SIZE	REMARKS
AC	3	Amelanchier canadensis SHADBLow SERVICEBERRY	6'-7"	LOW BRANCHED
AGR	2	Acer griseum PAPERBARK MAPLE	8'-10" B&B	MULTI-STEM
BMG	32	Buxus 'Green Velvet' GREEN VELVET BOXWOOD	18" #3	30" O.C.
BN	4	Betula nigra RIVER BIRCH	8'-10" B&B	3, 4 & 5 STEM
CCA	1	Cercis canadensis EASTERN REDBUD	6'-7"	MULTI-STEM
CK	2	Cornus kousa JAPANESE DOGWOOD	8" B&B	MULTI-STEM
CKF	24	Calamagrostis acutiflora 'Karl Foerster' KARL FOERSTER REED GRASS	2 GAL	
COF	3	Cornus florida FLOWERING DOGWOOD	6'-7" B&B	MULTI-STEM
HMS	130	Hemerocallis 'Stella-de-oro' STELLA-DE-ORO DAYLILY	1 GAL	
ICP	8	Ilex crenata 'Sky Pencil' SKY PENCIL HOLLY	4" B&B	MATCHED
JHB	11	Juniperus horizontalis 'Buffalo' BUFFALO JUNIPER	2 GAL	
NWL	16	Nepeta racemosa 'Walker's Low' WALKER'S LOW CATMINT	2 GAL	
OPG	7	Quercus pauciflora 'Green Pillar' GREEN PILLAR OAK	3"	MATCHED HEIGHT
RKO	10	Rosa 'Knock Out' KNOCK OUT SHRUB ROSE	24" #2	
SAC	80	Sedum acre GOLDMOSS SEDUM	1 GAL	
SB	16	Sedum 'Brilliant' SEDEM	1 GAL	
TPG	12	Thuja plicata 'Green Giant' WESTERN ARBORVITAE GREEN GIANT	6" B&B	
VCC	6	Viburnum carlesii 'Compactum' COMPACT KOREANSPICE VIBURNUM	3" B&B	
VMI	225	Vinca minor PERIWINKLE	4" POT	
VPR	8	Viburnum prunifolium BLACK HAW VIBURNUM	5'-6" B&B	

400 Hebron



HEREBY DECLARE TO THE BEST OF MY KNOWLEDGE AND BELIEF THAT THIS PLAN IS SUBSTANTIALLY CORRECT.
THOMAS G. GRACEFFA
PLAN # 1487

THOMAS GRACEFFA
LANDSCAPE ARCHITECT, LLC
19 FLAG DRIVE
MANCHESTER, CT 06042

PLANTING PLAN AT DELIVERY AREA
400 HEBRON AVE.
PREPARED FOR
H374, LLC GLASTONBURY, CONNECTICUT

BASE INFORMATION PROVIDED BY
MEGSON HEAGLE & FRIEND, GLASTONBURY, CT
SEE ARCH. & ENGINEERING PLANS FOR
COORDINATING WORK.