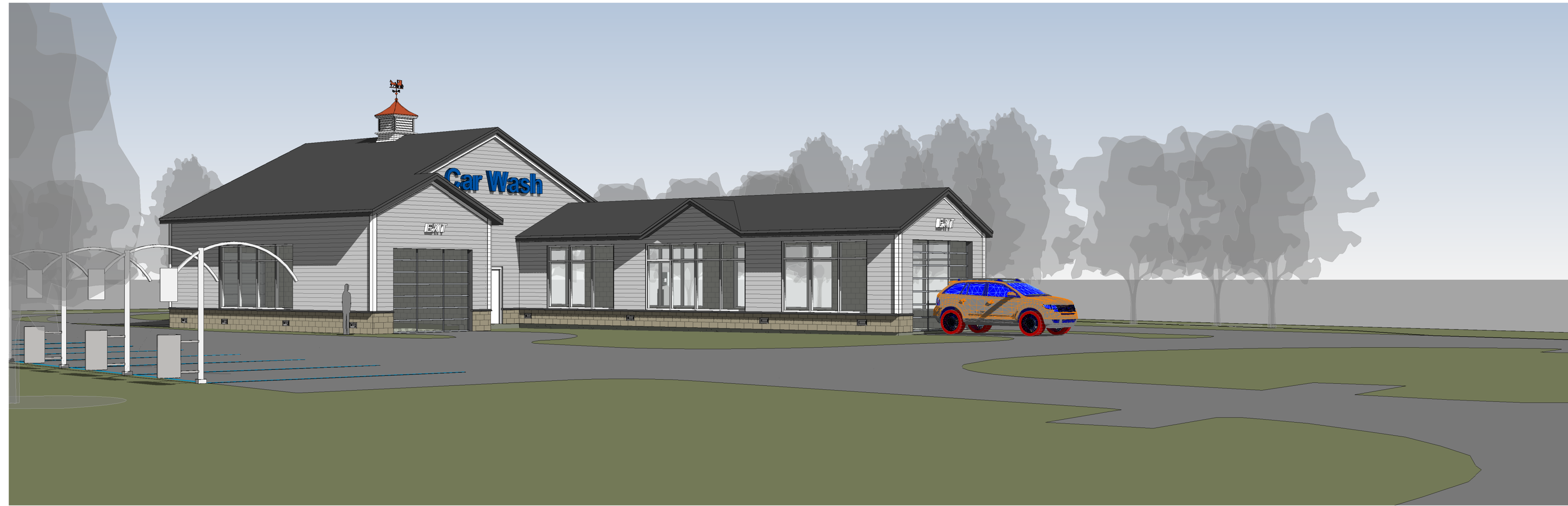


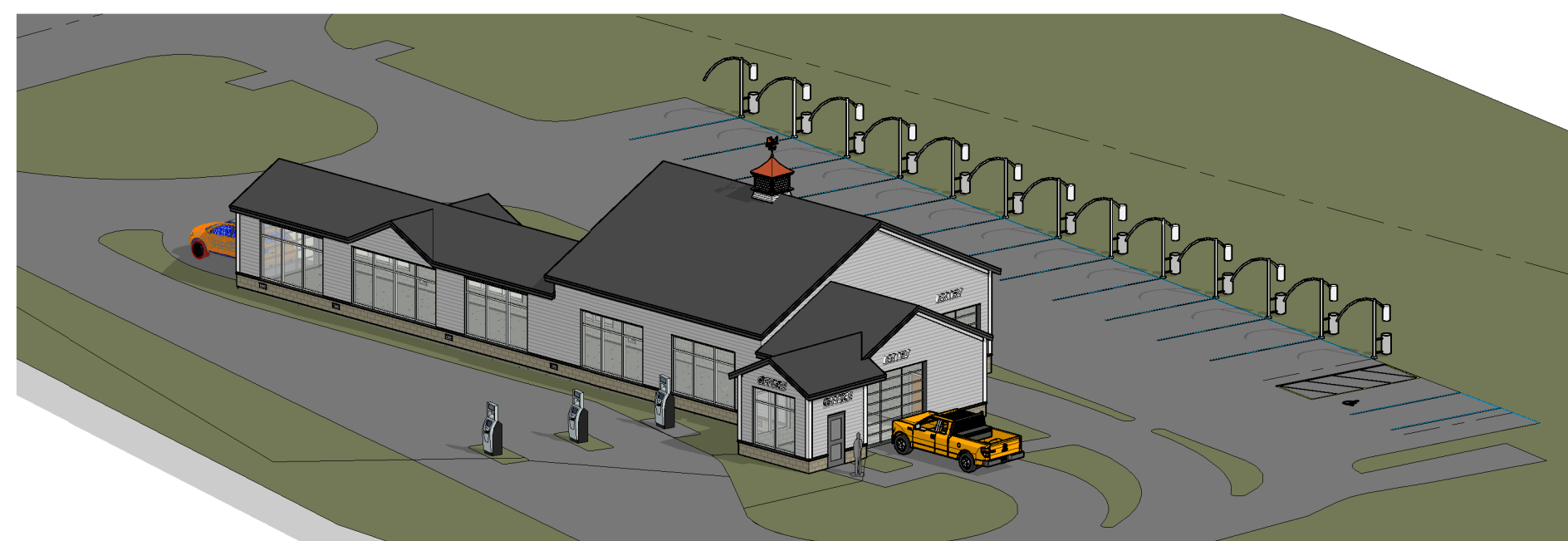
<b>FIN-1</b>	<b>RENDERED SITE PLAN</b> PREPARED FOR <b>THE CAR WASH CENTER</b> <b>GLASTONBURY</b> 2756 MAIN STREET GLASTONBURY, CONNECTICUT		Revisions: No.    Date    Description	
	Scale: 1" = 10' Checked by: DSZ Sheet no.: 1 of 1		Date: 03-09-2022 Drawn by: KLL Job no.: 21156	
© 2021\21186 - Glastonbury Carwash\Submittal\2022-03-09-11WC-Town Comments\Rendering.dwg, Rendering, Mar. 08, 2022 - 8:56:57 AM		<b>FAH</b> <b>F. A. Hesketh &amp; Associates, Inc.</b> 3 Creamery Brook, East Granby, CT 06026 Phone (860) 653-8000 Fax (860) 844-8600 Civil & Traffic Engineers - Surveyors - Planners - Landscape Architects    www.fahhesketh.com - malriahesketh.com		



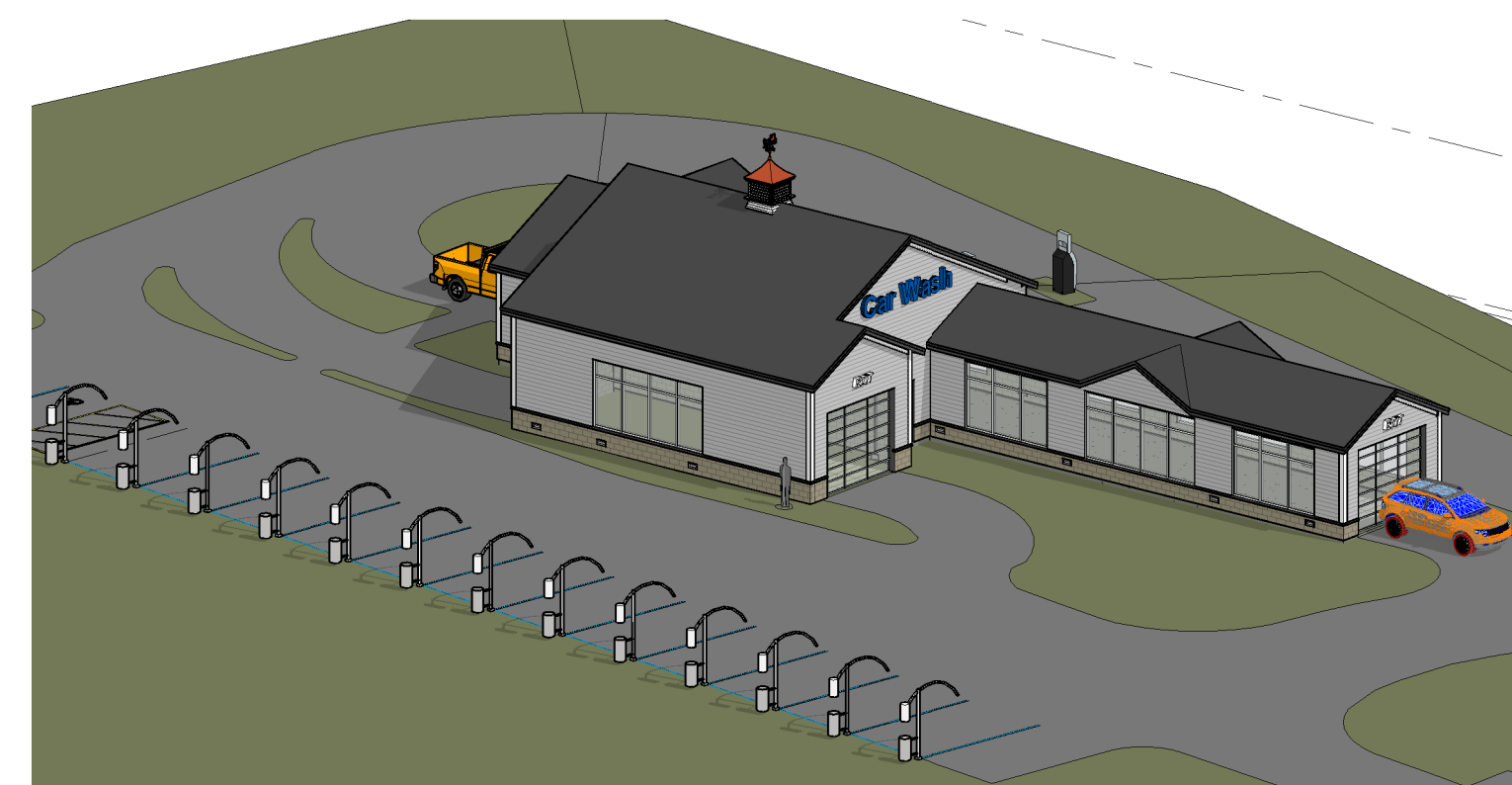
3 LOOKING SOUTHEAST FROM MAIN STREET



4 LOOKING NORTHEAST FROM MAIN STREET




2 Perspective 2



1 Perspective 1

ACTION	DATE	BY	DESCRIPTION
C	1/26/22	CCC	PROGRESS RELEASE
B	1/18/22	CCC	PROGRESS RELEASE
A	12/15/21	CCC	PROGRESS RELEASE

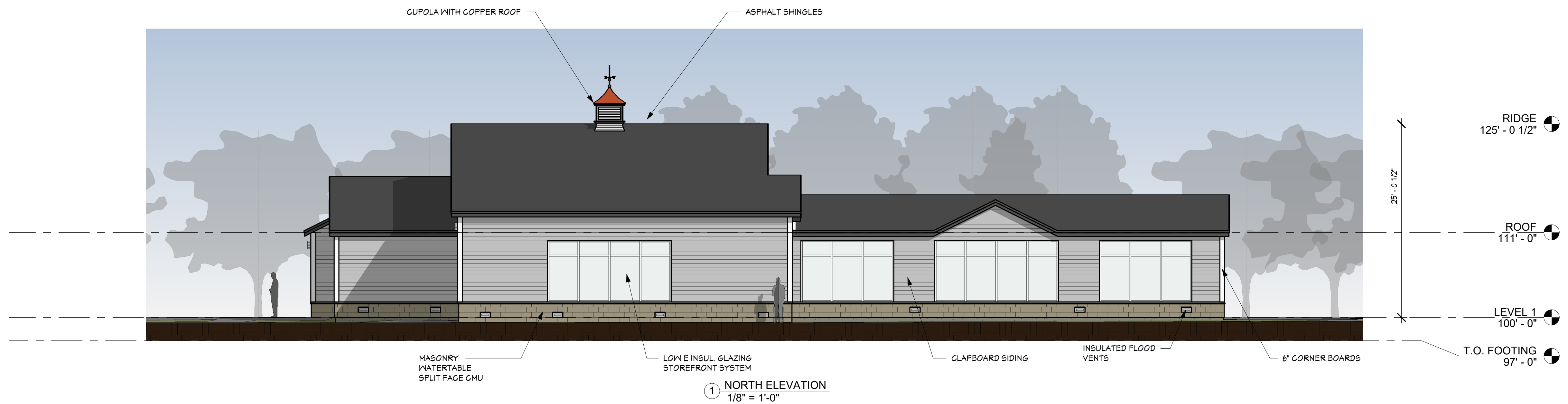

**CHRISTIAN C. CAREY**  
 ARCHITECT, P.C.  
 HISTORIC PRESERVATION ARCHITECTURE  
 94 North Elm Street, Westfield, Massachusetts 01086, 413-636-3397  
 33 Sylvania Park Road, Stowe, Vermont 05672, 802-253-4394

THE CAR WASH CENTER  
 2756 MAIN STREET  
 GLASTONBURY, CT 06033  
 ARIEL PERSPECTIVE -  
 SCHEMATIC "D"

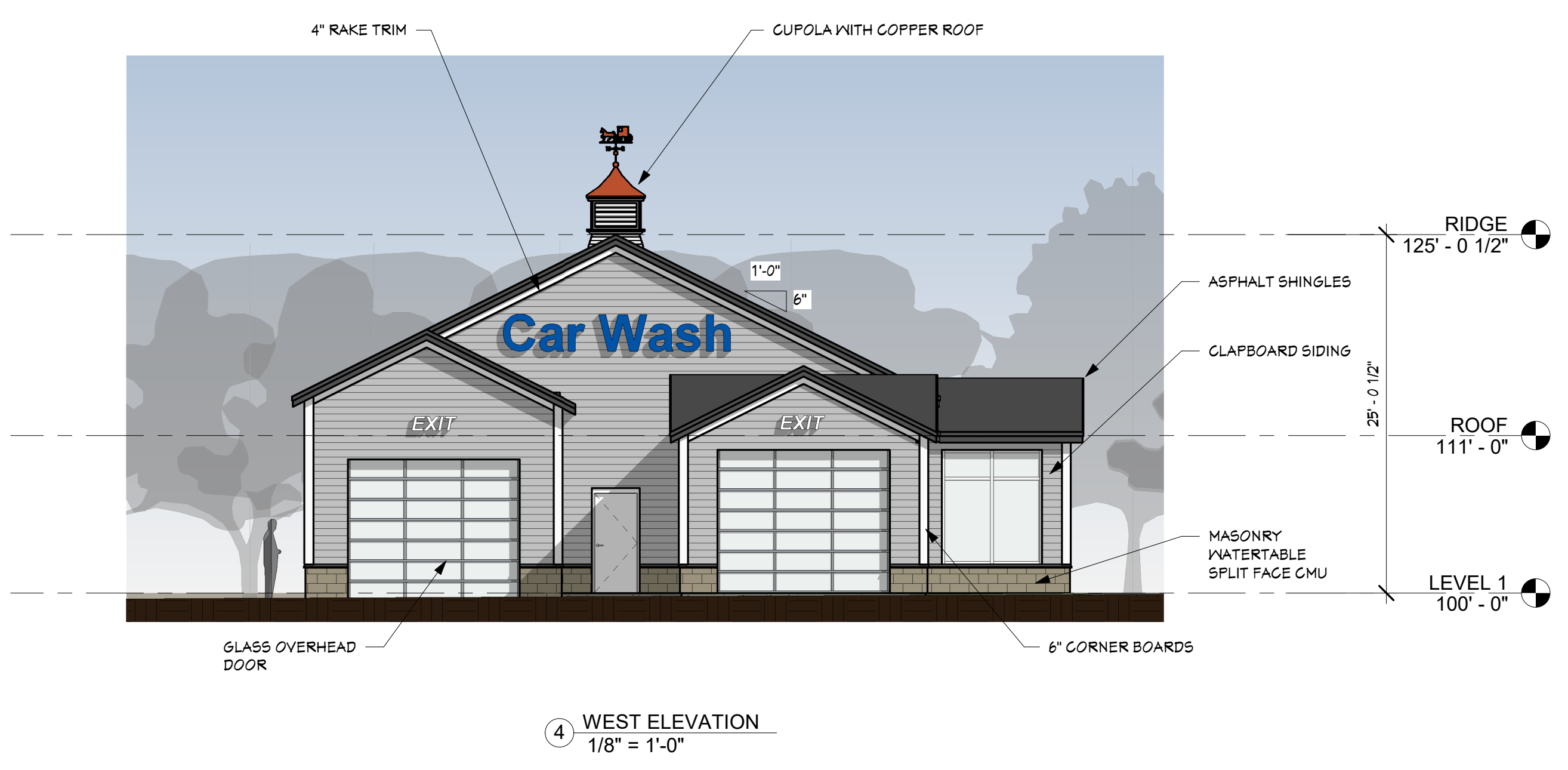


SCALE: AS NOTED  
 CADD DATE:  
 DRAWN BY: Author  
 CADD FILE:

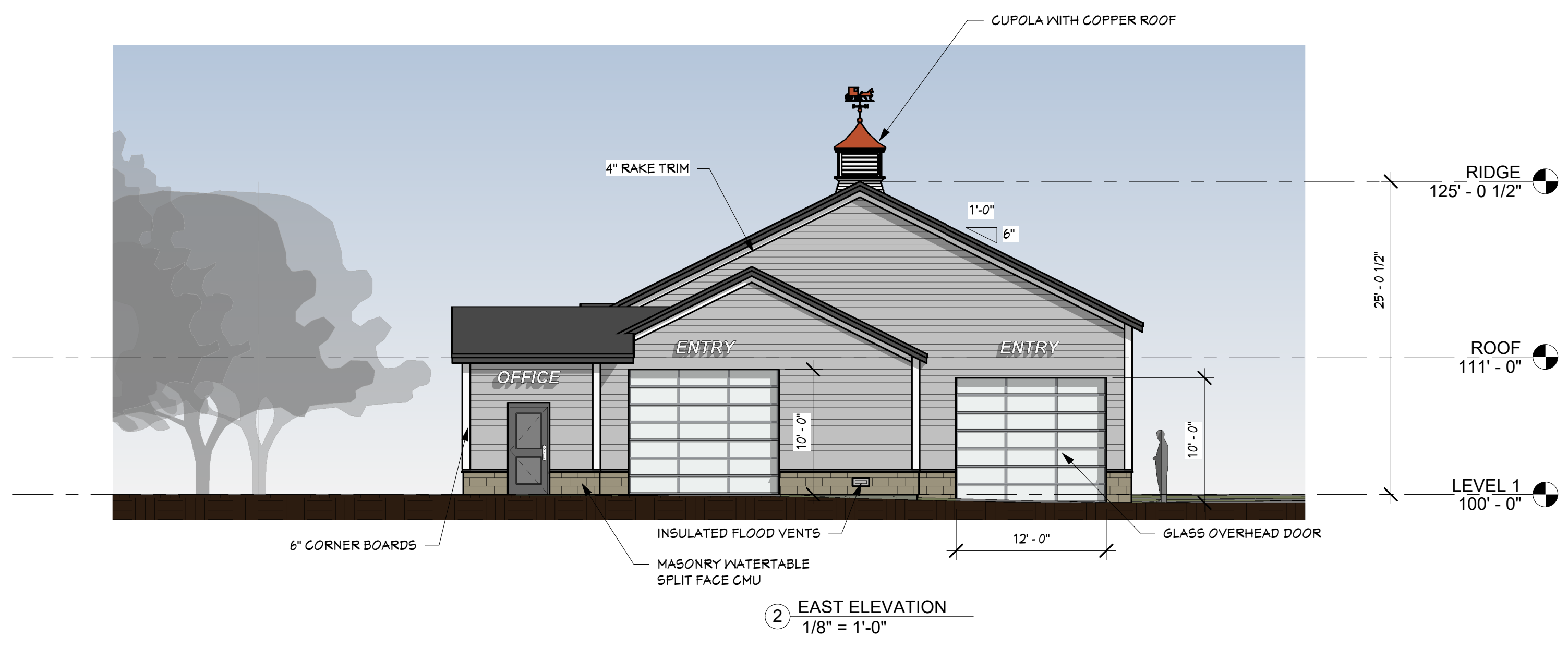
DRAWING  
 NO.  
**A3.0D**



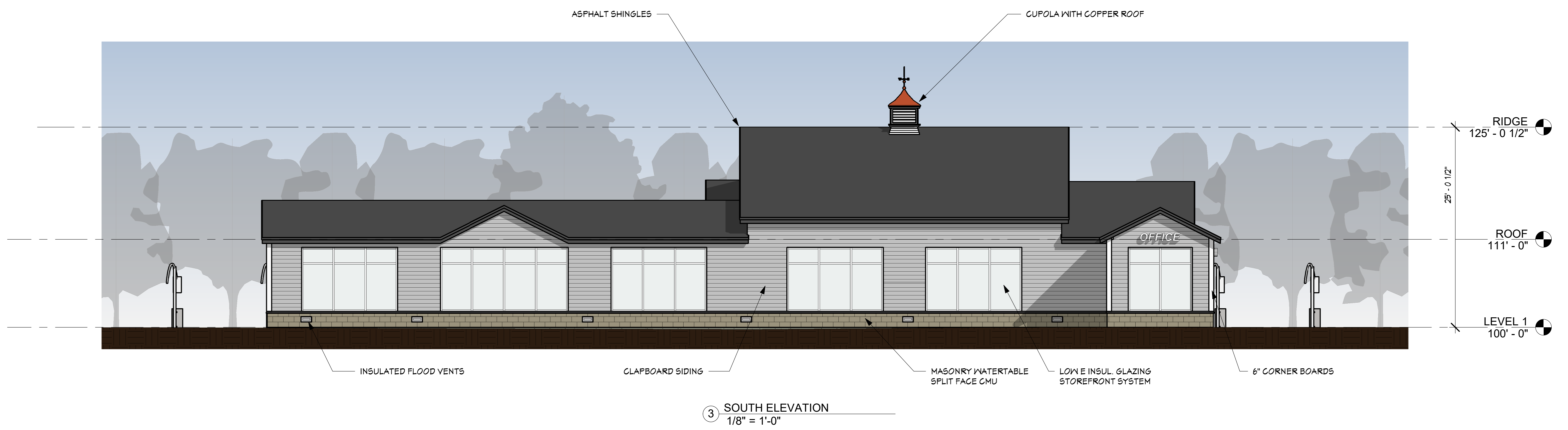
1 NORTH ELEVATION  
1/8" = 1'-0"



4 WEST ELEVATION  
1/8" = 1'-0"



2 EAST ELEVATION  
1/8" = 1'-0"



3 SOUTH ELEVATION  
1/8" = 1'-0"

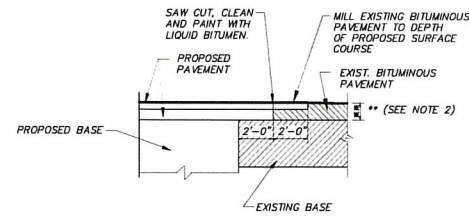
NO.	DATE	ACTION	BY	DESCRIPTION
C	1/26/22	CCC	CCC	PROGRESS RELEASE
B	1/18/22	CCC	CCC	PROGRESS RELEASE
A	12/15/21	CCC	CCC	PROGRESS RELEASE

CHRISTIAN C. CAREY  
ARCHITECT, P.C.  
HISTORIC PRESERVATION  
94 North Elm Street, Westfield, Massachusetts 01086, 413-456-3397  
33 Sylva Park Road, Stowe, Vermont 05672, 802-253-4394

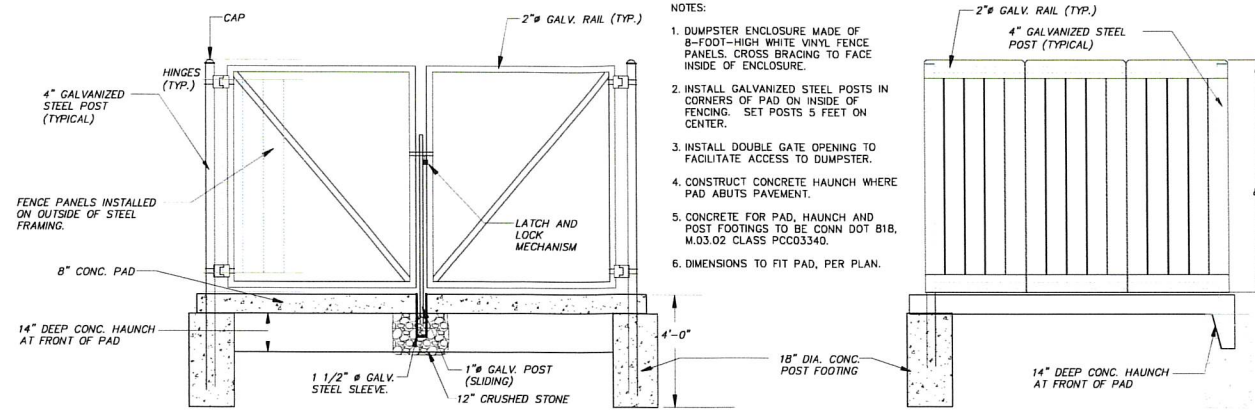
THE CAR WASH CENTER  
2156 MAIN STREET  
GLASTONBURY, CT 06033  
SCHEMATIC ELEVATIONS

SCALE: AS NOTED  
CADD DATE:  
DRAWN BY: Author  
CADD FILE:

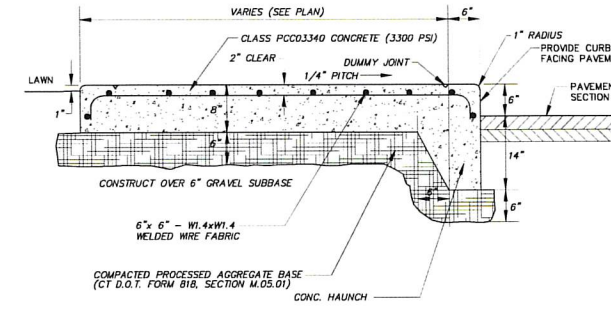
DRAWING NO.  
**A2.0D**



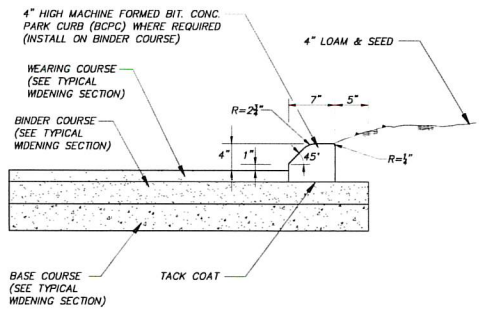
**PAVEMENT MATCH TREATMENT**  
N.T.S.



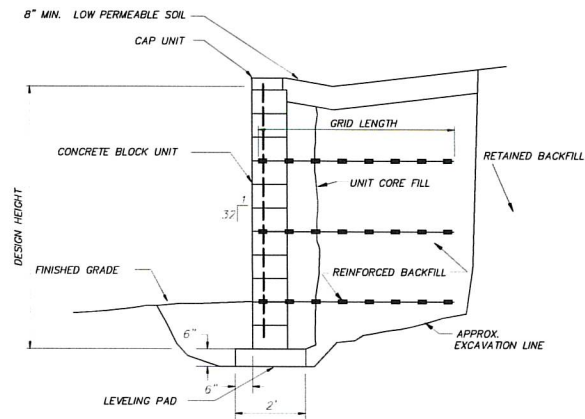
**DUMPSTER ENCLOSURE**  
N.T.S.



**CONCRETE DUMPSTER AND VACUUM EQUIPMENT PAD SECTION**  
N.T.S.



**BITUMINOUS CONCRETE PARK CURBING (BCPC)**  
N.T.S.



**TYPICAL REINFORCED SECTION MODULAR BLOCK RETAINING WALL**  
N.T.S.

**BLOCK LIBRARY**

**RETAINING BLOCKS (FINISHED TEXTURE ON ONE FACE)**

The Red-Rock Retaining Wall blocks come in multiple widths and configurations. The defining characteristic is that Retaining blocks have an asymmetric texture cast into only ONE face, and the textured face is the only side exposed to view in the finished wall. These blocks are machine-pressed, well-cast, precast modular blocks units manufactured from first purpose, non-reconstituted concrete and intended for constructing dry stacked modular retaining wall systems. The block units are manufactured from structural-grade concrete mixes in accordance with ASTM C94 or ASTM C939 that produce a finished unit with excellent resistance to freeze-thaw, deicing chemical exposure, and submerged conditions in both fresh water and salt water applications. All Red-Rock blocks are manufactured and distributed through an international network of individually-owned, licensed precast concrete manufacturers.

EXPOSURE CLASS	MINIMUM 28 DAY COMPRESSIVE STRENGTH <sup>(1)</sup>	MAXIMUM WATER/CEMENT RATIO	NOMINAL MAXIMUM AGGREGATE SIZE <sup>(2)</sup>	AGGREGATE CLASS DESIGNATION <sup>(3)</sup>	AIR CONTENT <sup>(4)</sup>
MODERATE	4,900 psi (27.6 MPa)	0.45	1.0 (25)	30	4.5% ± 1.5%
SEVERE	4,900 psi (27.6 MPa)	0.45	1.0 (25)	30	6.0% ± 1.5%
VERY SEVERE	4,500 psi (30.9 MPa)	0.40	1.0 (25)	45	6.0% ± 1.5%

**CONCRETE MIX PROPERTIES**

MAXIMUM WATER-SOLUBLE CHLORIDE (Cl<sup>-</sup>) CONTENT IN CONCRETE, PERCENT BY WEIGHT OF CEMENT<sup>(5)</sup>: 0.15  
 MAXIMUM CHLORIDE AS CF CONCENTRATION IN MIXING WATER, PARTS PER MILLION: 1000  
 MAXIMUM PERCENTAGE OF TOTAL CEMENTITIOUS MATERIALS BY WEIGHT<sup>(6)</sup> (VERY SEVERE EXPOSURE CLASS ONLY):  
 FLY ASH OR OTHER POZZOLANS PER ASTM C618: 25 TOTAL ASH, POZZOLANS, SLAG, AND SILICA FUME<sup>(7)</sup>: 50  
 SLAG CONFORMING TO ASTM C989: 50 TOTAL ASH, POZZOLANS, AND SILICA FUME<sup>(7)</sup>: 50  
 SILICA FUME CONFORMING TO ASTM C1245: 10 ALKALI-AGGREGATE REACTIVITY MITIGATION PER ACI 201

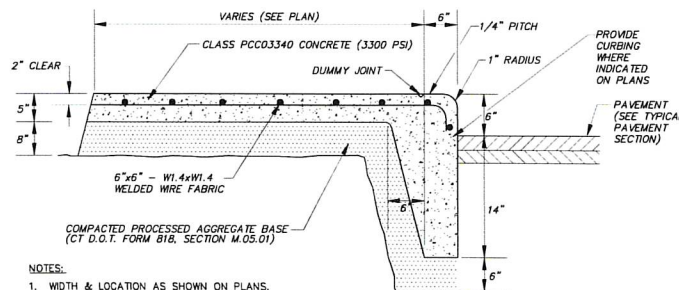
**REFERENCE DIMENSIONS:**  
 HEIGHT = VERTICAL DIMENSION OF TEXTURED FACE  
 LENGTH = HORIZONTAL DIMENSION PARALLEL TO TEXTURED FACE  
 WIDTH = HORIZONTAL DIMENSION PERPENDICULAR TO TEXTURED FACE

**DIMENSIONAL TOLERANCES<sup>(11)(12)</sup>**

HEIGHT	A1: BLOCKS	18" ± (457 ± 5) or 36" ± (914 ± 5)
LENGTH	FULL BLOCKS	48" ± (1172 ± 13)
	HALF BLOCKS	24" ± (609 ± 13)
WIDTH	28" (710) BLOCKS	22 1/2" ± (571 ± 13) FORM LINE TO BACK OF BLOCK, PLUS APPROXIMATELY 2% (136) FACE TEXTURE
	41" (1040) BLOCKS	35 1/2" ± (902 ± 13) FORM LINE TO BACK OF BLOCK, PLUS APPROXIMATELY 2% (136) FACE TEXTURE
	60" (1520) BLOCKS	54 1/2" ± (1387 ± 13) FORM LINE TO BACK OF BLOCK, PLUS APPROXIMATELY 2% (136) FACE TEXTURE
	52" (1320) XL BLOCKS	46 1/2" ± (1184 ± 13) FORM LINE TO BACK OF BLOCK, PLUS APPROXIMATELY 2% (136) FACE TEXTURE
	72" (1820) XL BLOCKS	66 1/2" ± (1684 ± 13) FORM LINE TO BACK OF BLOCK, PLUS APPROXIMATELY 2% (136) FACE TEXTURE
	96" (2440) XL BLOCKS	90 1/2" ± (2302 ± 13) FORM LINE TO BACK OF BLOCK, PLUS APPROXIMATELY 2% (136) FACE TEXTURE

**RETAINING BLOCKS Block Library**

Face Texture	Cobble / Limestone	Kingstone / Ledgestone	Face Texture	Cobble / Limestone	Kingstone / Ledgestone
<b>R-28T 28" (710mm) TOP</b>	1230 lb (557 kg)	1190 lb (539 kg)	<b>R-28HT 28" (710mm) HALF TOP</b>	570 lb (260 kg)	540 lb (240 kg)
Block Volume: 6.57 ft <sup>3</sup> (0.243 m <sup>3</sup> )	6.07 ft <sup>3</sup> (0.229 m <sup>3</sup> )	Block Volume: 4.61 ft <sup>3</sup> (0.133 m <sup>3</sup> )	Block Volume: 3.76 ft <sup>3</sup> (0.106 m <sup>3</sup> )		
Center of Gravity: 14.9" (378mm)	14.2" (362mm)	Center of Gravity: 15.3" (389 mm)	Center of Gravity: 14.7" (373 mm)		
<b>R-28M 28" (710mm) MIDDLE</b>	1610 lb (730 kg)	1540 lb (700 kg)	<b>R-28HM 28" (710mm) HALF MIDDLE</b>	750 lb (340 kg)	710 lb (320 kg)
Block Volume: 11.28 ft <sup>3</sup> (0.319 m <sup>3</sup> )	10.78 ft <sup>3</sup> (0.305 m <sup>3</sup> )	Block Volume: 5.23 ft <sup>3</sup> (0.148 m <sup>3</sup> )	Block Volume: 4.98 ft <sup>3</sup> (0.141 m <sup>3</sup> )		
Center of Gravity: 13.9" (354 mm)	13.4" (340 mm)	Center of Gravity: 14.3" (364 mm)	Center of Gravity: 13.8" (350 mm)		
<b>R-28B 28" (710mm) BOTTOM</b>	1740 lb (780 kg)	1670 lb (760 kg)	<b>R-28HB 28" (710mm) HALF BOTTOM</b>	870 lb (390 kg)	770 lb (350 kg)
Block Volume: 12.9 ft <sup>3</sup> (0.365 m <sup>3</sup> )	11.70 ft <sup>3</sup> (0.331 m <sup>3</sup> )	Block Volume: 5.66 ft <sup>3</sup> (0.160 m <sup>3</sup> )	Block Volume: 5.41 ft <sup>3</sup> (0.153 m <sup>3</sup> )		
Center of Gravity: 14.0" (355 mm)	13.5" (343 mm)	Center of Gravity: 14.3" (364 mm)	Center of Gravity: 13.8" (352 mm)		



**CONCRETE CURB AND WALK**  
N.T.S.

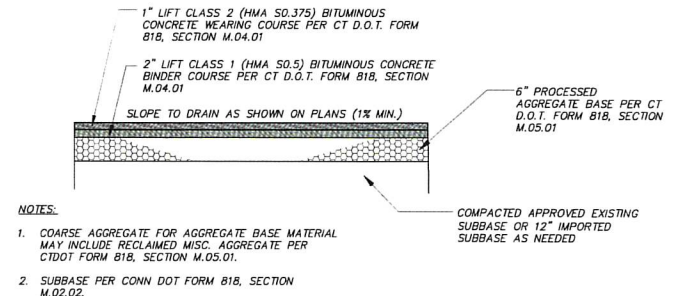
- MODULAR BLOCK RETAINING WALL NOTES:**
- SECTION SHOWN FOR ILLUSTRATIVE PURPOSES ONLY. THE SPECIFIC DESIGN OF THE WALL WILL BE DETERMINED BY THE MANUFACTURER/SUPPLIER OF THE WALL SYSTEM/MATERIALS.
  - THE CONTRACTOR IS RESPONSIBLE FOR SUBMITTING DESIGN DRAWINGS AND CALCULATIONS FOR THE PROPOSED WALL DESIGN, INCLUDING:
    - GEOTECHNICAL ENGINEERING ANALYSIS/DESIGN CALCULATIONS, AND SPECIFICATIONS OF BACKFILL MATERIALS, BASE MATERIALS, DRAINAGE MATERIALS, ETC.
    - CROSS SECTIONS OF WALL SHOWING WALL FOUNDATION, BACKFILL MATERIAL SPECIFICATIONS, GEGRID REINFORCING DESIGN, DRAINAGE LAYERS AND DRAIN PIPING, ETC.
    - ELEVATION VIEW OF WALL SHOWING LONGITUDINAL STATIONING ALONG WALL, FINISH GRADE AT BOTTOM AND TOP OF WALL, STAIR STEPPING, CAP PLACEMENT AND FINAL GRADES, ETC.
    - PLAN VIEW SHOWING CONNECTION OF UNDERDRAIN TO STORM DRAINAGE STRUCTURES. PLAN TO INCLUDE FLOW LINE ELEVATIONS, PIPE MATERIALS, CLEANOUT LOCATIONS, PIPE SIZE AND SLOPES, ETC.
    - WALL, GEGRID AND BACKFILL INSTALLATION DETAILS AND FENCE AND GUIDERAIL INSTALLATION DETAILS.
  - ALL DESIGN AND SHOP DRAWINGS/CALCULATIONS SHALL BE PREPARED BY A PROFESSIONAL ENGINEER EXPERIENCED IN MODULAR BLOCK WALL DESIGN AND LICENSED IN THE STATE OF CONNECTICUT (WALL DESIGN ENGINEER). DRAWINGS AND CALCULATIONS SHALL BE SIGNED AND SEALED.
  - COLOR AND BLOCK STYLE SHALL BE APPROVED BY THE OWNER.
  - BLOCK MATERIALS SHALL BE SPECIFICALLY DESIGNED TO WITHSTAND HARSH WINTER FREEZE/THAW CYCLING AND SALT LOADED RUNOFF.

**TYPICAL REINFORCED SECTION MODULAR BLOCK RETAINING WALL**  
N.T.S.

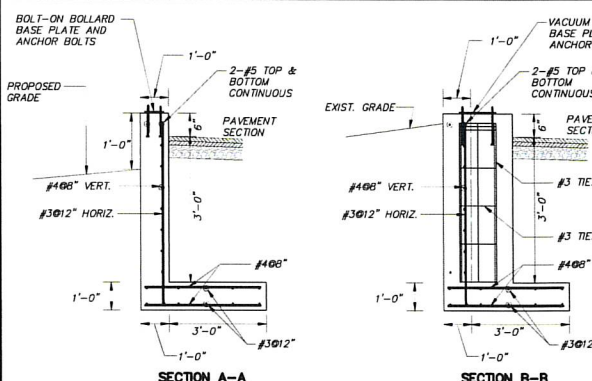
**GRAVITY BLOCK RETAINING WALL**  
N.T.S.

**NOTES:**

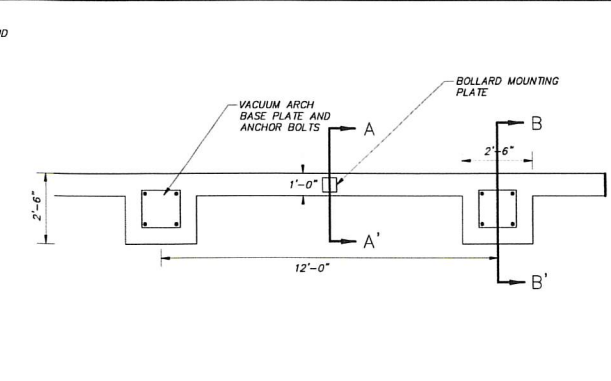
- 3,300 PSI CONCRETE
- MAX SLUMP = 4"
- 6% ENTRAINED AIR
- REBAR = ASTM A615, GRADE 60
- PROVIDE RUBBERED FINISH ON ALL EXPOSED SURFACES FOR PALM ARCH. BELOW FINISH GRADE.
- CHAMFER TOP EDGES.
- SEE PALM ARCH FOOTING DETAIL FOR DETAILS OF REINFORCING AND ANCHOR BOLTS FOR VACUUM ARCH. BASE PLATES FOR PALM ARCH.
- INTEGRATE ELECTRIC AND COMPRESSED AIR CONDUITS INTO WALL (SEE PALM ARCH FOOTING DETAIL).
- CONSTRUCT/INSTALL CATCH BASIN AND SEPARATOR STRUCTURES BEFORE CONSTRUCTING WALL. ADJUST/CAST WALL AROUND BASIN STRUCTURES.
- SHOW FOR ILLUSTRATIVE PURPOSES. DETAILED DESIGN PLANS TO BE PREPARED BY A LICENSED CT PROFESSIONAL ENGINEER FOR BUILDING PERMIT APPLICATION.



**PAVEMENT SECTION**  
N.T.S.



**REINFORCED CONCRETE RETAINING WALL SECTION**  
N.T.S.



**REINFORCED CONCRETE RETAINING WALL SECTION PARTIAL PLAN**  
N.T.S.

**TOWN PLAN & ZONING COMMISSION APPROVAL**

THE CAR WASH CENTER GLASTONBURY / TWC HOLDINGS Glastonbury, LLC FLOOD ZONE / PBD PROJECT / APPLICANT ZONE

275E MAIN STREET  
PROJECT ADDRESS

4.11 / 12.0  
SPECIAL PERMIT SECTION T.P.&Z. CHAIRMAN

SPECIAL PERMIT APPROVAL DATE COMMUNITY DEVELOPMENT DIRECTOR

NOTE: ALL SHEETS OF THIS PLAN SET ARE LOCATED IN THE OFFICE OF COMMUNITY DEVELOPMENT.

UNDERGROUND UTILITY NOTE:  
UNDERGROUND UTILITY, STRUCTURE AND FACILITY LOCATIONS DEPICTED AND NOTED HEREON HAVE BEEN COMPILED, IN PART, FROM RECORD DRAWINGS SUPPLIED BY THE RESPECTIVE UTILITY COMPANIES OR GOVERNMENTAL AGENCIES, FROM PAROLE TESTIMONY AND FROM OTHER SOURCES. THESE LOCATIONS MUST BE CONSIDERED AS APPROXIMATE IN NATURE. ADDITIONALLY, OTHER SUCH FEATURES MAY EXIST ON THE SITE, THE EXISTENCE OF WHICH ARE UNKNOWN TO THE UNDERSIGNED. THE SIZE, LOCATION AND EXISTENCE OF ALL SUCH FEATURES MUST BE FIELD DETERMINED AND VERIFIED BY THE APPROPRIATE AUTHORITIES PRIOR TO CONSTRUCTION. CALL BEFORE YOU DIG 1-800-922-4455 OR 811.

INSPECTION NOTE:  
THE CONTRACTOR SHALL NOTIFY THE TOWN OF GLASTONBURY ENGINEERING DIVISION 24 HOURS PRIOR TO BEGINNING ANY STORM DRAINAGE, SANITARY SEWER INSTALLATION, ROADWAY PREPARATION, PAVING, SIDEWALK, CURBING, OR ANY EXCAVATION IN THE TOWN RIGHT-OF-WAY TO SCHEDULE INSPECTIONS. THE DIVISION CAN BE REACHED BETWEEN 8:00 AM - 4:30 PM MONDAY THROUGH FRIDAY AT (860)-653-7735.

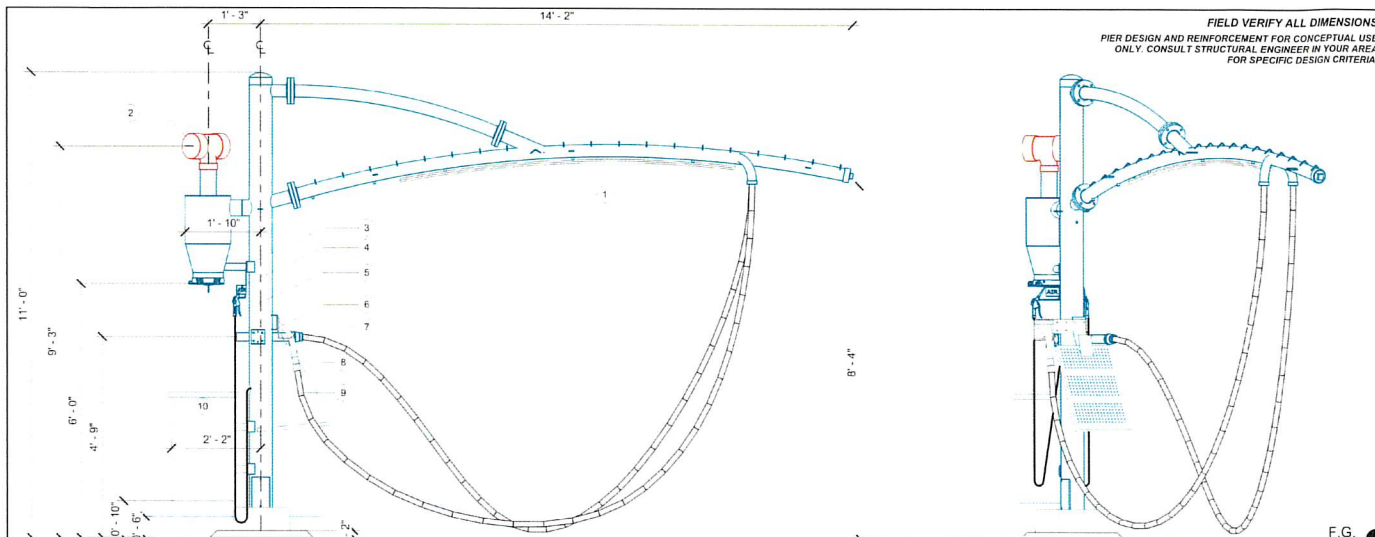
**DETAILS**

**THE CAR WASH CENTER GLASTONBURY**

275E MAIN STREET  
GLASTONBURY, CONNECTICUT

Date: 02-10-2022 Drawn by: GAH Job No: 21166  
Scale: NTS Checked by: DSZ Sheet No: 2 OF 7

**SD-2**



ITEM	DESCRIPTION
1	8' LED LIGHT
2	6' OVERHEAD ALUMINUM VACUUM TUBE
3	DUAL USER PALM ARCH
4	AIR TOOL, HANGER
5	AIR NOZZLE & HOSE
6	CLAW VACUUM TOOL
7	CREVICE VACUUM TOOL
8	17' STAINLESS STEEL MAT RACK
9	1-1/2" x 18" VACUUM HOSE
10	30 GALLON (STAINLESS STEEL) WASTE RECEPTACLE
11	CURB
12	COMPRESSED AIR LINE RUN UP THROUGH FOOTING WITH 1/2" FIPT ADAPTER, 10' ABOVE FOOTING GRADE (BY OTHERS)
13	BURIED COMPRESSED AIR LINE (BY OTHERS)

THIS PRELIMINARY DRAWING IS THE PROPERTY OF VACUTECH AND IS NOT TO BE USED FOR CONSTRUCTION OR INSTALLATION WITHOUT WRITTEN CONSENT. WRITTEN CONSENT MAY NOT BE PROVIDED BY ANY PERSON, AGENCY, OR DEALER NOT AUTHORIZED BY VACUTECH.

**CNCS VACUTECH** THE CAR WASH CENTER  
 1300 HI TECH DRIVE SHERMAN, NY 02311  
 PHONE: (307) 675-1922  
 EMAIL: info@vacutech.com  
 WEB: www.vacutech.com

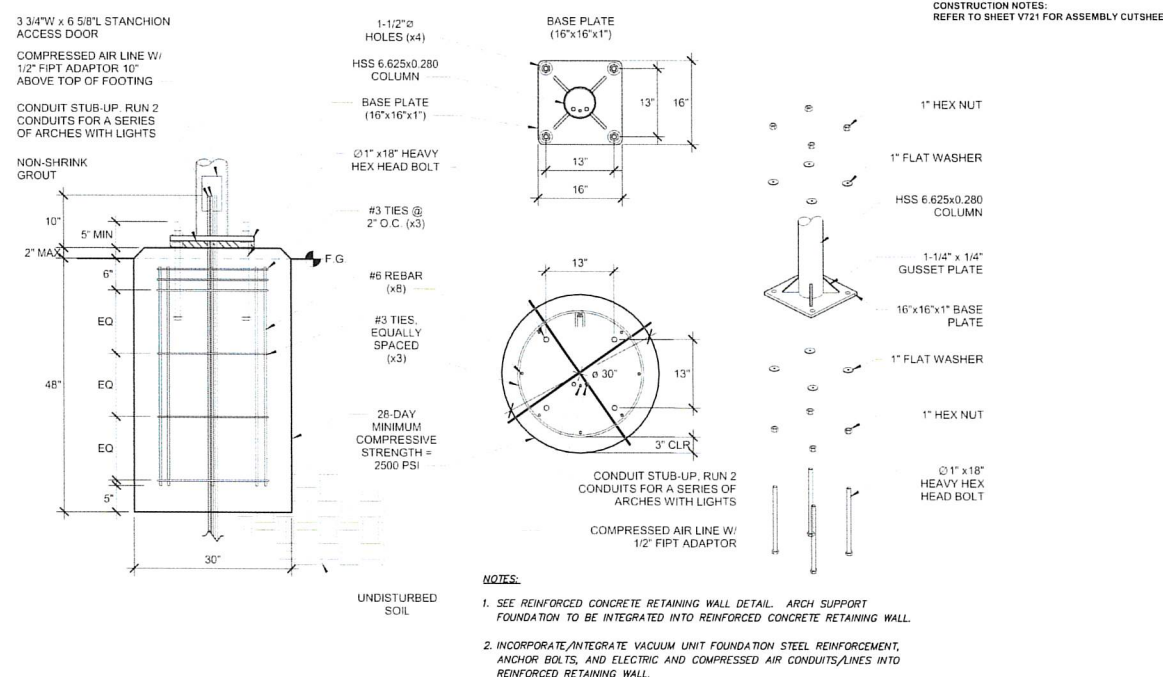
2756 MAIN STREET  
 GLASTONBURY, CT

Revision \_\_\_\_\_ By Chk Date \_\_\_\_\_

PARKING ELEVATION 1

Project Number \_\_\_\_\_  
 Date \_\_\_\_\_  
 Drawn By TD  
 Checked By ML V301

**VACUUM UNIT DETAIL**  
N.T.S.



NOTE: PIER DESIGN AND REINFORCEMENT FOR CONCEPTUAL USE ONLY. CONSULT STRUCTURAL ENGINEER IN YOUR AREA FOR SPECIFIC DESIGN CRITERIA.

THIS PRELIMINARY DRAWING IS THE PROPERTY OF VACUTECH AND IS NOT TO BE USED FOR CONSTRUCTION OR INSTALLATION WITHOUT WRITTEN CONSENT. WRITTEN CONSENT MAY NOT BE PROVIDED BY ANY PERSON, AGENCY, OR DEALER NOT AUTHORIZED BY VACUTECH.

**CNCS VACUTECH** THE CAR WASH CENTER  
 1300 HI TECH DRIVE SHERMAN, NY 02311  
 PHONE: (307) 675-1922  
 EMAIL: info@vacutech.com  
 WEB: www.vacutech.com

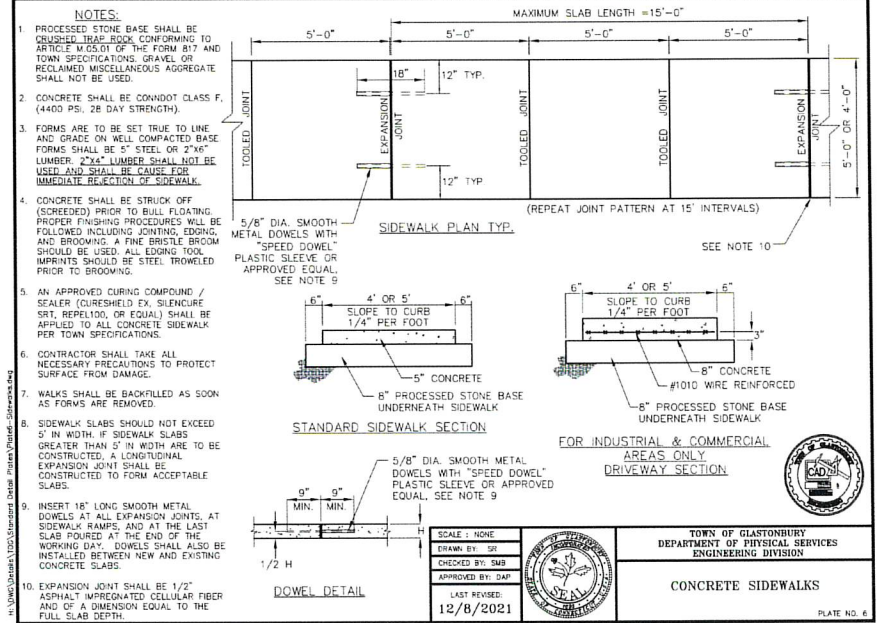
2756 MAIN STREET  
 GLASTONBURY, CT

Revision \_\_\_\_\_ By Chk Date \_\_\_\_\_

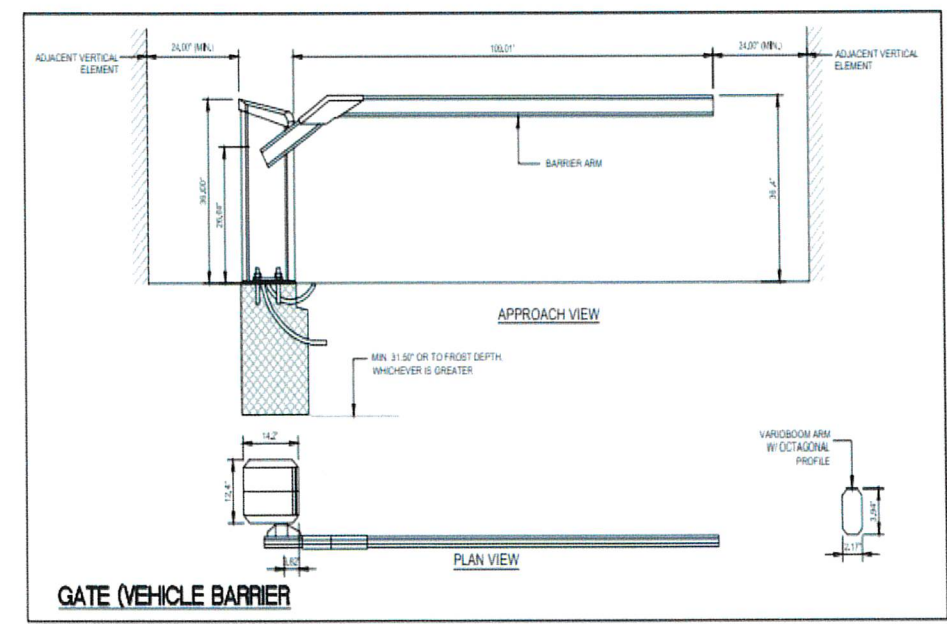
FOOTING DETAIL

Project Number \_\_\_\_\_  
 Date \_\_\_\_\_  
 Drawn By \_\_\_\_\_  
 Checked By \_\_\_\_\_ V411

**VACUUM UNIT FOUNDATION DETAIL**  
N.T.S.



**TOWN STANDARD CONCRETE SIDEWALK**  
N.T.S.



**GATE (VEHICULAR BARRIER) DETAIL**  
N.T.S.

**TOWN PLAN & ZONING COMMISSION APPROVAL**

THE CAR WASH CENTER GLASTONBURY / TWIC HOLDINGS Glastonbury, LLC. FLOOD ZONE / PBD

PROJECT / APPLICANT \_\_\_\_\_ ZONE \_\_\_\_\_

2756 MAIN STREET  
 PROJECT ADDRESS \_\_\_\_\_

4.11 / 12.0  
 SPECIAL PERMIT SECTION \_\_\_\_\_ T.P. & Z. CHAIRMAN \_\_\_\_\_

SPECIAL PERMIT APPROVAL DATE \_\_\_\_\_ COMMUNITY DEVELOPMENT DIRECTOR \_\_\_\_\_

NOTE: ALL SHEETS OF THIS PLAN SET ARE LOCATED IN THE OFFICE OF COMMUNITY DEVELOPMENT.

**UNDERGROUND UTILITY NOTE:**  
 UNDERGROUND UTILITY, STRUCTURE AND FACILITY LOCATIONS DEPICTED AND NOTED HEREON HAVE BEEN COMPILED, IN PART, FROM RECORD MAPPING SUPPLIED BY THE RESPECTIVE UTILITY COMPANIES OR GOVERNMENTAL AGENCIES, FROM PAROLE TESTIMONY AND FROM OTHER SOURCES. THESE LOCATIONS MUST BE CONSIDERED AS APPROXIMATE IN NATURE. ADDITIONALLY, OTHER SUCH FEATURES MAY EXIST ON THE SITE, THE EXISTENCE OF WHICH ARE UNKNOWN TO THE UNDERSIGNED. THE SIZE, LOCATION AND EXISTENCE OF ALL SUCH FEATURES MUST BE FIELD DETERMINED AND VERIFIED BY THE APPROPRIATE AUTHORITIES PRIOR TO CONSTRUCTION. CALL BEFORE YOU DIG 1-800-922-4455 OR 811.

**INSPECTION NOTE:**  
 THE CONTRACTOR SHALL NOTIFY THE TOWN OF GLASTONBURY ENGINEERING DIVISION 24 HOURS PRIOR TO BEGINNING ANY STORM DRAINAGE, SANITARY SEWER INSTALLATION, ROADWAY PREPARATION, PAVING, SIDEWALK, CURBING, OR ANY EXCAVATION IN THE TOWN RIGHT-OF-WAY TO SCHEDULE INSPECTIONS. THE DIVISION CAN BE REACHED BETWEEN 8:00 AM - 4:30 PM MONDAY THROUGH FRIDAY AT (860)-652-7735.

**F.A. Hesketh & Associates, Inc.**  
 3 Creamery Brook, East Granby, CT 06026  
 Phone (860) 653-8000 Fax (860) 644-8600  
 www.fahesketh.com mail@fahesketh.com  
 Civil & Traffic Engineers - Surveyors - Planners - Landscape Architects

**FAH**

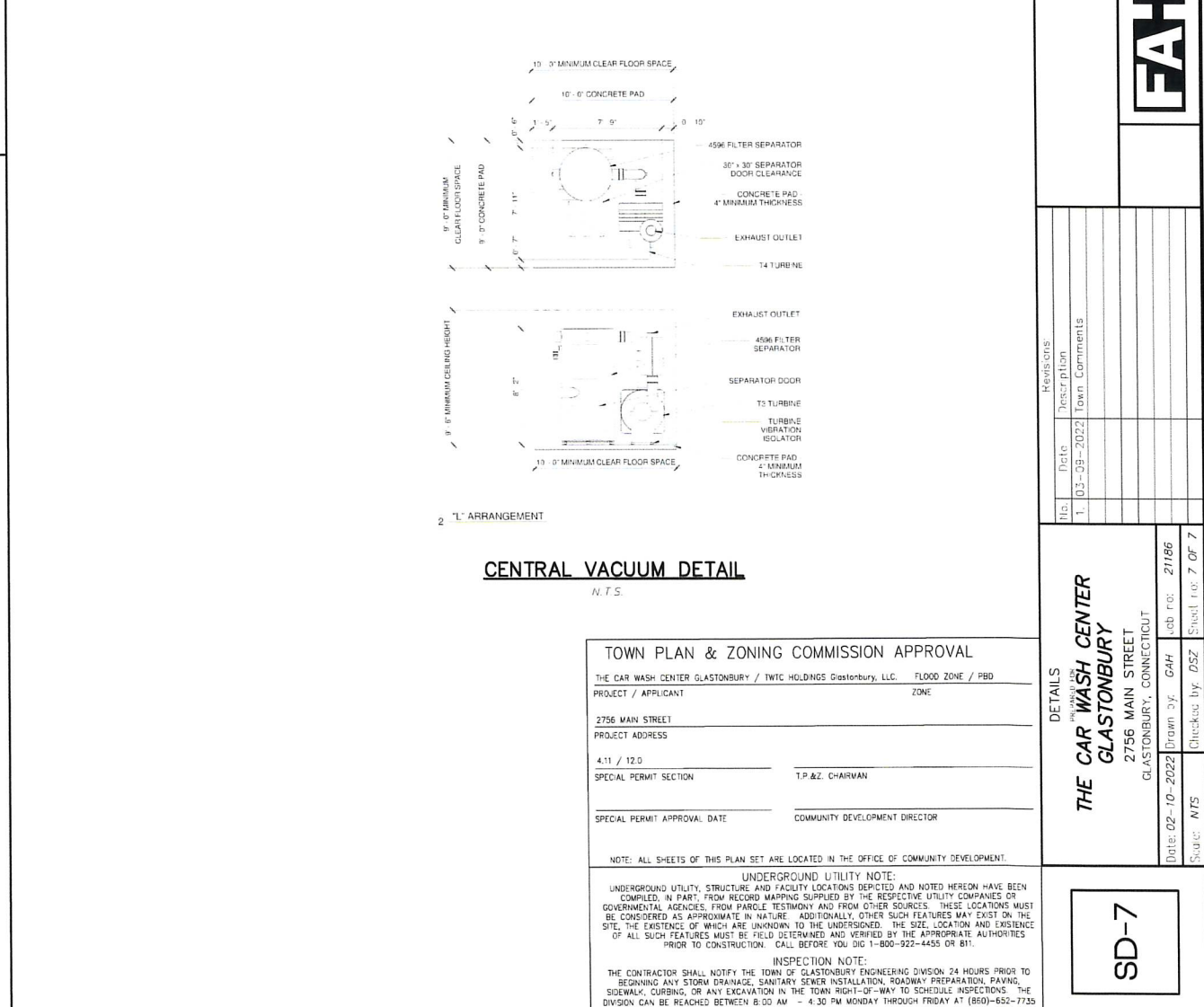
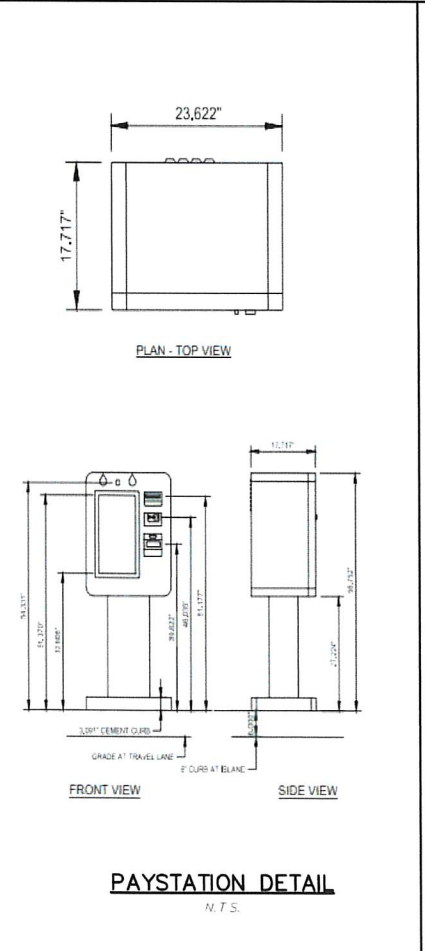
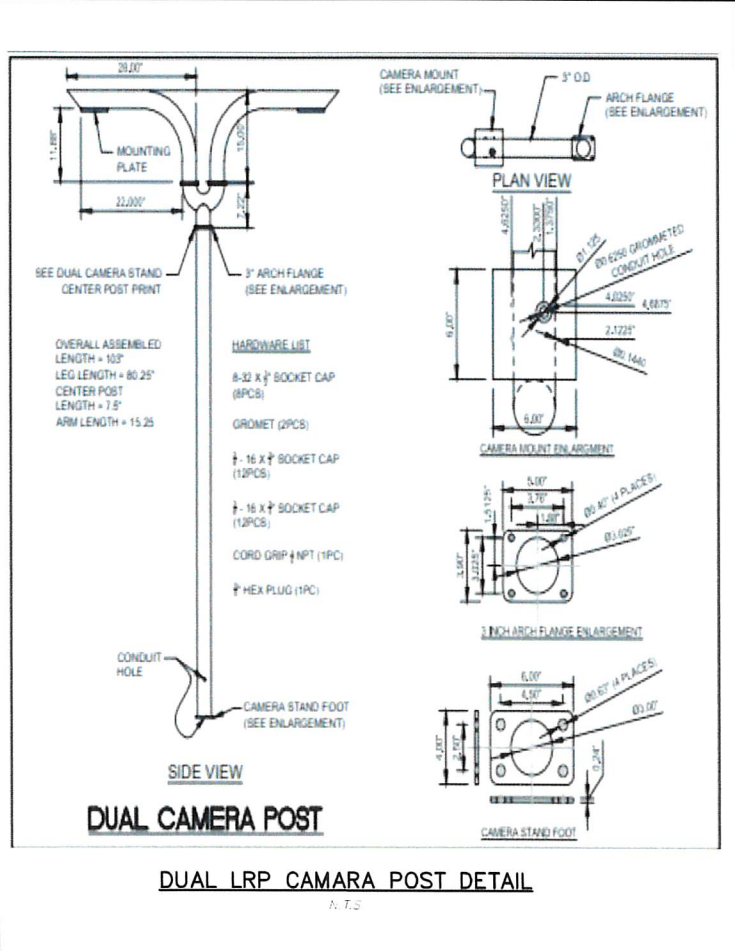
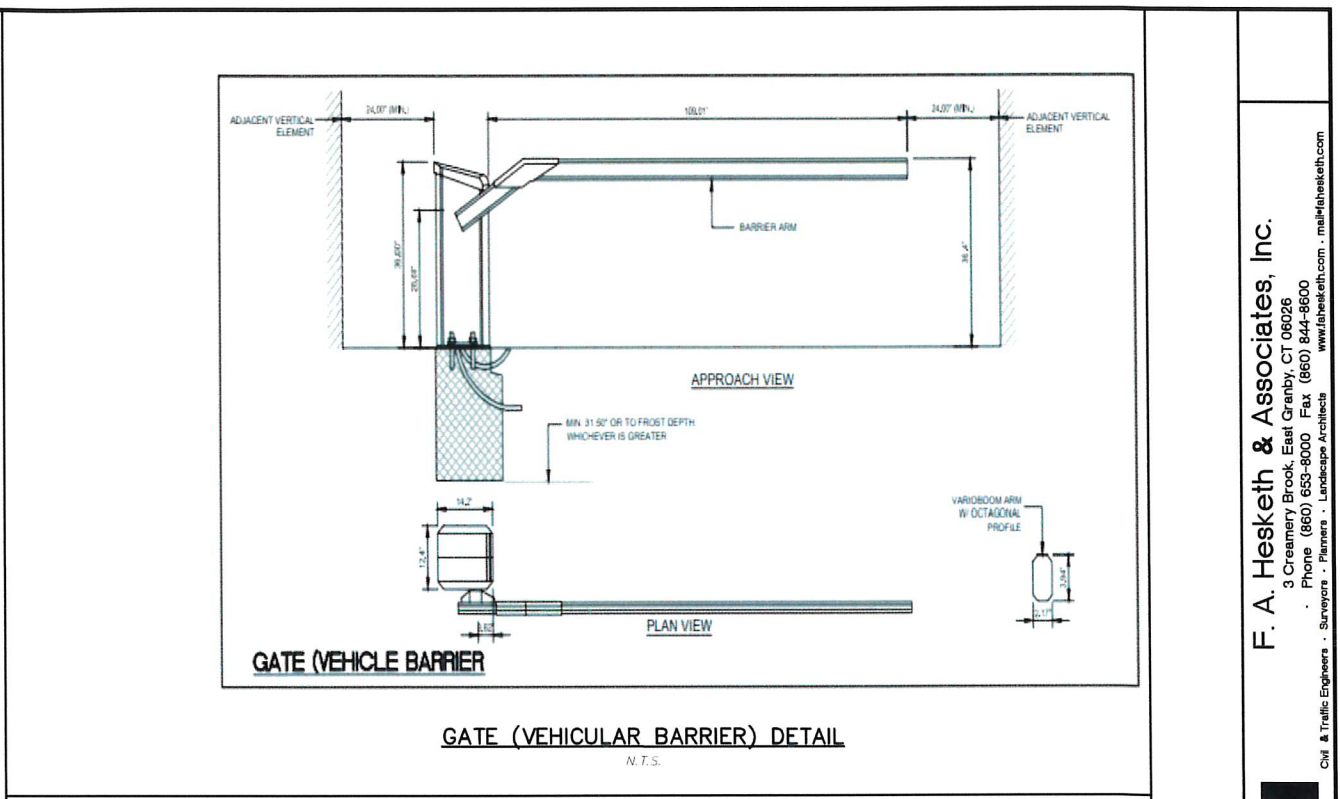
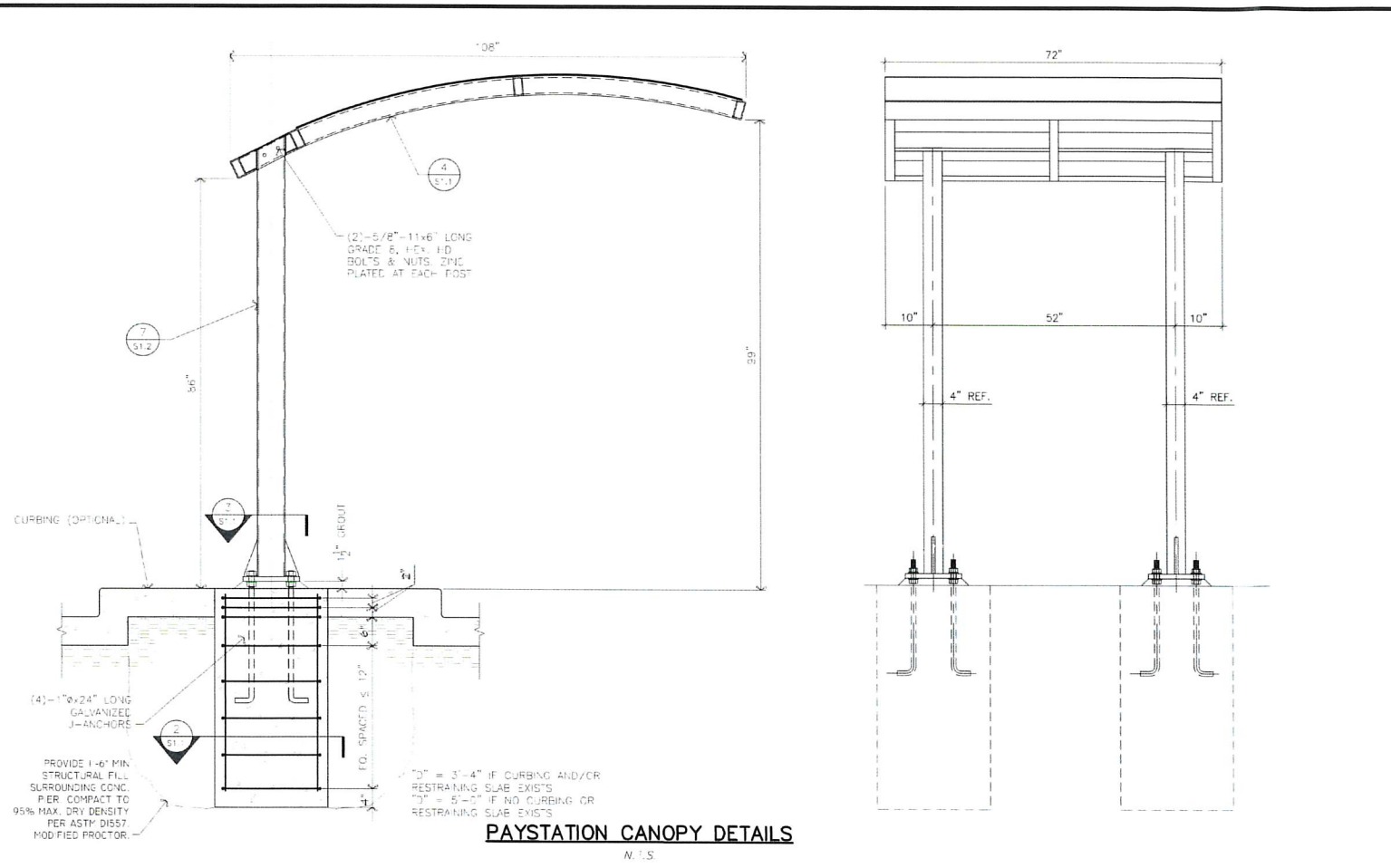
Rev	Date	Description
1	03-09-2022	Town Comments

**DETAILS**

**THE CAR WASH CENTER GLASTONBURY**  
 2756 MAIN STREET  
 GLASTONBURY, CONNECTICUT

Drawn by: GAH Job no: 27186  
 Checked by: DSZ Sheet no: 6 OF 7  
 Date: 02-10-2022  
 Scale: NTS

**SD-6**



**F. A. Hesketh & Associates, Inc.**  
3 Creamery Brook, East Granby, CT 06026  
Phone (860) 653-8000 Fax (860) 844-8600  
www.fahsketh.com · Landscape Architects  
Civil & Traffic Engineers · Surveyors · Planners

**FAH**

NO.	Date	Description	Town Comments
1	03-09-2022		

DETAILS

**THE CAR WASH CENTER GLASTONBURY**  
2756 MAIN STREET  
GLASTONBURY, CONNECTICUT

Drawn by: G.M.H. Job No: 27186  
Checked by: D.S.Z. Sheet No: 7 OF 7  
Scale: N.T.S.

SD-7

# The Car Wash Center

Project Address:  
Glastonbury, CT

SPI WO #:35032  
Issue Date: February 7, 2022

Salesperson: Bruce Corriveau  
Designer: KRC

DRAWINGS ARE NOT TO SCALE  
UNLESS OTHERWISE NOTED

SPI Revisions:

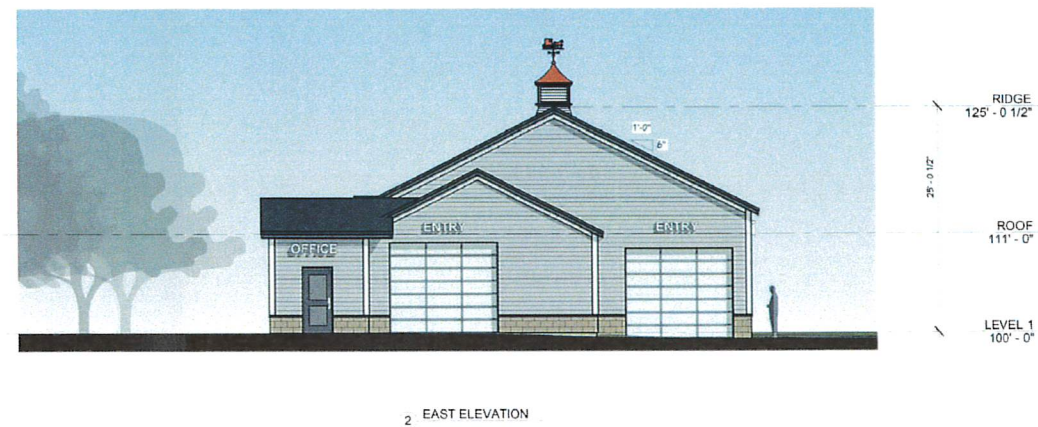


Photo rendering is only conceptual. Actual size ratio and color may differ from finished sign.

Customer Approval:  APPROVED  APPROVED AS NOTED  REVISE & RESUBMIT

**SIGN PRO**  
signpro-usa.com

60 Westfield Drive  
Plantsville, CT 06479  
860.229.1812

SIGN TYPE  
**B**

PAGE  
**4 of 6**

PRINT SIGN DATE  
© COPYRIGHT 2022, BY SIGN PRO INC. ALL DESIGNS PRESENTED ARE THE SOLE PROPERTY OF SIGN PRO INC. AND MAY NOT BE REPRODUCED IN PART OR WHOLE WITHOUT WRITTEN PERMISSION FROM SIGN PRO INC.



# Car Wash

Illuminated Channel Letters  
Illuminated face  
Overall Size: 30"H x 152.5"W  
Square Footage: 31.77 ft<sup>2</sup>

Quantity: 1

# ENTRY

Non-Illuminated Letter  
Overall Size: 18"H x 57"W  
Quantity: 2

# EXIT

Non-Illuminated Letter  
Overall Size: 18"H x 57"W  
Quantity: 2

# OFFICE

Non-Illuminated Letter  
Overall Size: 18"H x 57"W  
Quantity: 2

## The Car Wash Center

Project Address:  
Glastonbury, CT

SPI WO #: 35032  
Issue Date: February 7, 2022

Salesperson: Bruce Corriveau  
Designer: KRC

DRAWINGS ARE NOT TO SCALE  
UNLESS OTHERWISE NOTED

SPI Revisions:

J:\Jobs\_A-Z\The Car Wash Center\Glastonbury\35032 - Storefront Signage

Customer Approval:  APPROVED  APPROVED AS NOTED  REVISE & RESUBMIT

PRINT SIGN DATE

© COPYRIGHT 2022, BY SIGN PRO INC. ALL DESIGNS PRESENTED ARE THE SOLE PROPERTY OF SIGN PRO INC. AND MAY NOT BE REPRODUCED IN PART OR WHOLE WITHOUT WRITTEN PERMISSION FROM SIGN PRO INC.

  
signpro-usa.com

60 Westfield Drive  
Plantsville, CT 06479  
860.229.1812



SIGN TYPE

B

PAGE

5 of 6