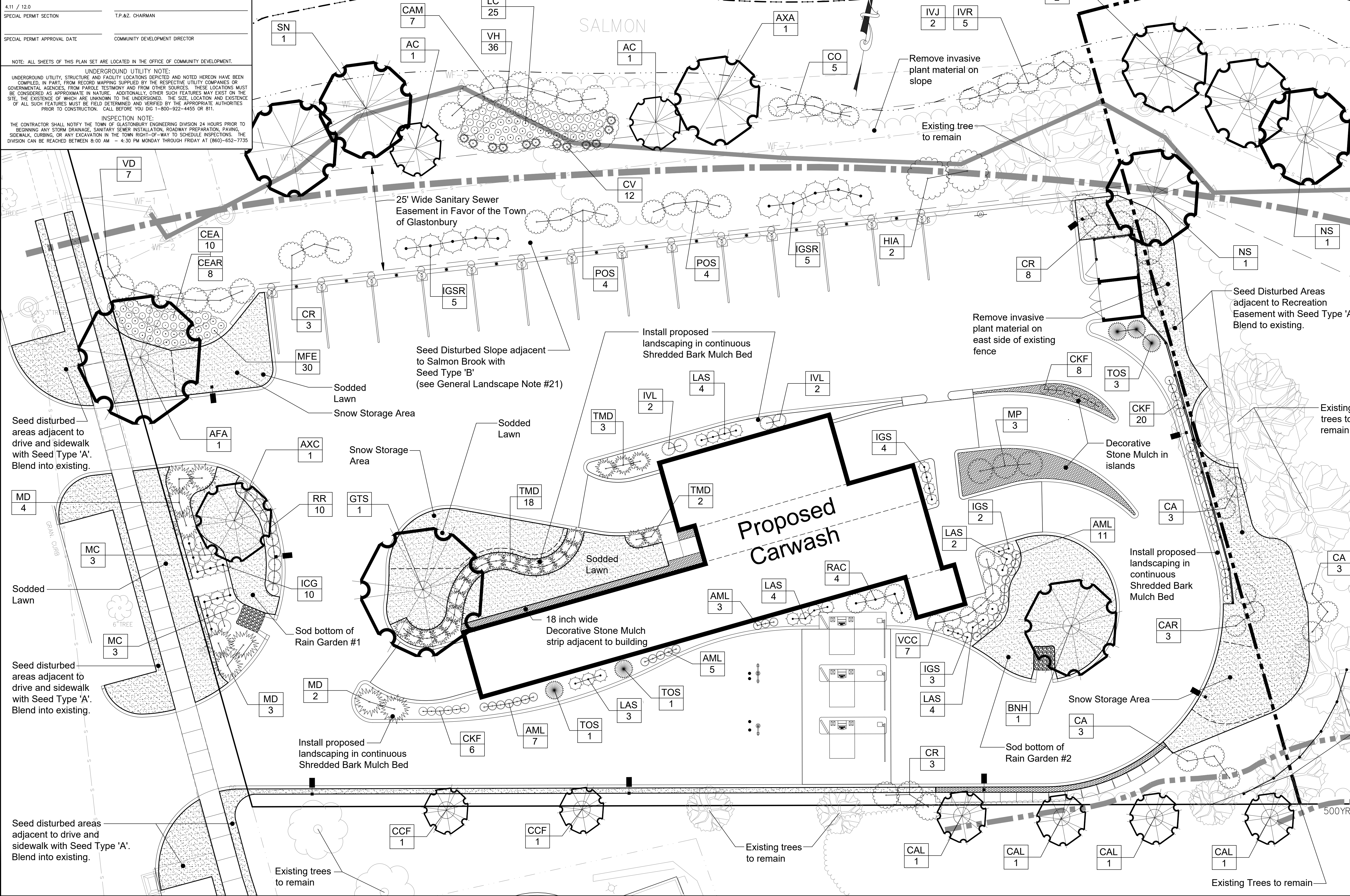
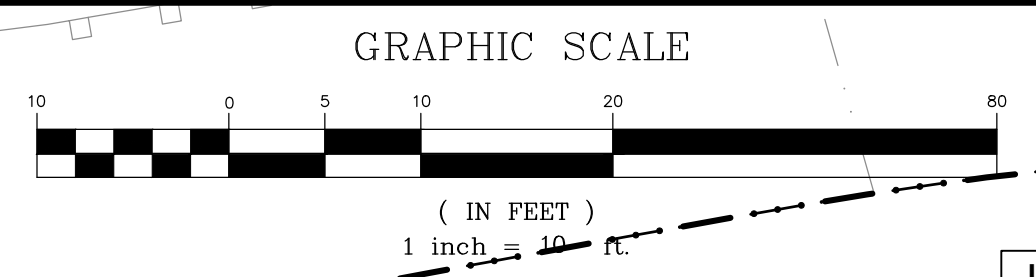


TOWN PLAN & ZONING COMMISSION APPROVAL

THE CAR WASH CENTER GLASTONBURY / TWIC HOLDINGS Glastonbury, LLC. FLOOD ZONE / FBD
 PROJECT / APPLICANT ZONE
 2756 MAIN STREET
 PROJECT ADDRESS ZONE
 4.11 / 12.0
 SPECIAL PERMIT SECTION T.P.&Z. CHAIRMAN
 SPECIAL PERMIT APPROVAL DATE COMMUNITY DEVELOPMENT DIRECTOR

NOTE: ALL SHEETS OF THIS PLAN SET ARE LOCATED IN THE OFFICE OF COMMUNITY DEVELOPMENT.
UNDERGROUND UTILITY NOTE:
 UNDERGROUND UTILITY, STRUCTURE AND FACILITY LOCATIONS DEPICTED AND NOTED HEREON HAVE BEEN COMPILED, IN PART, FROM RECORD MAPPING SUPPLIED BY THE RESPECTIVE UTILITY COMPANIES OR GOVERNMENTAL AGENCIES, FROM PAROLE TESTIMONY AND FROM OTHER SOURCES. THESE LOCATIONS MUST BE CONSIDERED AS APPROXIMATE IN NATURE. ADDITIONALLY, OTHER SUCH FEATURES MAY EXIST ON THE SITE, THE EXISTENCE OF WHICH ARE UNKNOWN TO THE UNDERSIGNED. THE SIZE, LOCATION AND EXISTENCE OF ALL SUCH FEATURES MUST BE FIELD DETERMINED AND VERIFIED BY THE APPROPRIATE AUTHORITIES PRIOR TO CONSTRUCTION. CALL BEFORE YOU DIG 1-800-922-4455 OR 811.
INSPECTION NOTE:
 THE CONTRACTOR SHALL NOTIFY THE TOWN OF GLASTONBURY ENGINEERING DIVISION 24 HOURS PRIOR TO BEGINNING ANY STORM DRAINAGE, SANITARY SEWER INSTALLATION, ROADWAY PREPARATION, PAVING, SIDEWALK, CURBING, OR ANY EXCAVATION IN THE TOWN RIGHT-OF-WAY TO SCHEDULE INSPECTIONS. THE DIVISION CAN BE REACHED BETWEEN 8:00 AM - 4:30 PM MONDAY THROUGH FRIDAY AT (860)-652-7735



F. A. Hesketh & Associates, Inc.
 3 Creamery Brook, East Granby, CT 06026
 Phone (860) 653-8000 Fax (860) 844-8600
 www.fahhsketh.com mail@fahhsketh.com
 Civil & Traffic Engineers - Surveyors - Planners - Landscape Architects

FAH

| No. | Date | Description |
|-----|------------|---------------|
| 1 | 03-09-2022 | Town comments |
| 2 | 03-21-2022 | Town comments |

LANDSCAPE PLAN
 PREPARED FOR
**THE CAR WASH CENTER
 GLASTONBURY**
 2756 MAIN STREET
 GLASTONBURY, CONNECTICUT
 Date: 02-10-2022 Drawn by: KLL Job no: 21186
 Scale: 1" = 10' Checked by: DSZ Sheet no: 1 of 2
 C:\2021\21186 - Glastonbury Carwash\Submittal\2022-03-21-Beatification Committee\CAR LS-1, Mar 17, 2022 - 11:54:00 AM

LS-1

LANDSCAPE SCHEDULE

Deciduous Shade Trees

| Symbol | Botanical Name | Common Name | Quantity | Size | Root | Mature Height |
|--------|--|-------------------------|----------|-------------------------|----------------------|---------------|
| AXA | <i>Acer x freemanii</i> 'Autumn Blaze' | Autumn Blaze Maple | 3 | 2 1/2 to 3 inch caliper | Balled and Burlapped | 45 to 50 Feet |
| AFC | <i>Acer x freemanii</i> 'Celebration' | Celebration Maple | 1 | 2 1/2 to 3 inch caliper | Balled and Burlapped | 40 to 50 Feet |
| BNH | <i>Betula nigra</i> 'Heritage' | Heritage River Birch | 1 | 8 to 10 foot (Clump) | Balled and Burlapped | 40 to 50 Feet |
| GTS | <i>Gleditsia triacanthos</i> 'Shademaster' | Shademaster Honeylocust | 2 | 2 1/2 to 3 inch caliper | Balled and Burlapped | 35 to 40 Feet |
| LS | <i>Liquidambar styraciflua</i> | Sweetgum | 2 | 1 1/2 to 2 inch caliper | Balled and Burlapped | 60 to 75 Feet |
| NS | <i>Nyssa sylvatica</i> | Black Gum | 2 | 2 1/2 to 3 inch caliper | Balled and Burlapped | 35 to 40 Feet |

Deciduous Ornamental Trees

| Symbol | Botanical Name | Common Name | Quantity | Size | Root | Mature Height |
|--------|---|-----------------------|----------|-------------------------|----------------------|---------------|
| AC | <i>Amelanchier canadensis</i> | Shadblow Serviceberry | 2 | 6 to 8 foot (Clump) | Balled and Burlapped | 20 to 25 Feet |
| CAL | <i>Cornus (Swida) alternifolia</i> | Alternatleaf Dogwood | 4 | 6 to 8 foot (Clump) | Balled and Burlapped | 15 to 20 Feet |
| CCF | <i>Cercis canadensis</i> 'Forest Pansy' | Forest Pansy Redbud | 2 | 1 1/2 to 2 inch caliper | Balled and Burlapped | 15 to 20 Feet |

Evergreen Trees

| Symbol | Botanical Name | Common Name | Quantity | Size | Root | Mature Height |
|--------|-------------------------------------|--------------------------|----------|--------------------|----------------------|---------------|
| TOS | <i>Thuja occidentalis</i> 'Smaragd' | Emerald Green Arborvitae | 5 | 5 to 6 foot height | Balled and Burlapped | 12 to 15 Feet |

Deciduous Shrubs

| Symbol | Botanical Name | Common Name | Quantity | Size | Root | Mature Height |
|--------|--|----------------------------------|----------|----------------------|--------------|---------------|
| AML | <i>Aronia melanocarpa</i> 'Low Scape Mound' | Low Scape Mound™ Aronia | 26 | 12 to 15 inch height | #2 Container | 1 to 2 Feet |
| CA | <i>Clethra alnifolia</i> | Summersweet Shrub | 9 | 18 to 21 inch height | #3 Container | 5 to 7 Feet |
| CAM | <i>Cornus (Swida) amomum</i> | Silky Dogwood | 7 | 18 to 24 inch height | #3 Container | 6 to 10 Feet |
| CAR | <i>Clethra alnifolia</i> 'Ruby Spice' | Ruby Spice Summersweet Shrub | 3 | 18 to 21 inch height | #3 Container | 4 to 6 Feet |
| CEA | <i>Ceanothus americanus</i> | New Jersey Tea | 10 | 10 to 12 inch height | #1 Container | 3 to 4 Feet |
| CEAR | <i>Ceanothus americanus</i> 'Ruby Infusion' | Ruby Infusion New Jersey Tea | 8 | 10 to 12 inch height | #1 Container | 2 to 3 Feet |
| CO | <i>Cephalanthus occidentalis</i> | Buttonbush | 5 | 18 to 24 inch height | #3 Container | 5 to 12 Feet |
| CR | <i>Cornus (Swida) racemosa</i> | Gray Dogwood | 14 | 18 to 24 inch height | #3 Container | 6 to 8 Feet |
| HIA | <i>Hamamelis x intermedia</i> 'Arnold Promise' | Arnold Promise Witch Hazel | 2 | 18 to 24 inch height | #3 Container | 6 to 12 Feet |
| IVJ | <i>Ilex verticillata</i> 'Jim Dandy' | Jim Dandy Winterberry (male) | 2 | 18 to 24 inch height | #3 Container | 5 to 7 Feet |
| IVL | <i>Itea virginica</i> 'Little Henry' | Little Henry Virginia Sweetspire | 4 | 15 to 18 inch height | #3 Container | 3 to 4 Feet |
| IVR | <i>Ilex verticillata</i> 'Red Sprite' | Red Sprite Winterberry (female) | 5 | 18 to 24 inch height | #3 Container | 3 to 4 Feet |
| MP | <i>Myrica pensylvanica</i> | Northern Bayberry | 3 | 30 to 36 inch height | #3 Container | 5 to 10 Feet |
| POS | <i>Physocarpus opulifolius</i> 'Summer Wine' | Summer Wine Black Ninebark | 8 | 18 to 24 inch height | #2 Container | 5 to 6 Feet |
| RR | <i>Rosa x 'Radtko'</i> | Double Knock Out Rose® | 10 | 18 to 24 inch height | #3 Container | 3 to 4 Feet |
| VCS | <i>Viburnum carlesii</i> 'Spice Baby' | Spice Baby™ Koreanspice Viburnum | 7 | 18 to 24 inch height | #3 Container | 3 to 5 Feet |
| VD | <i>Viburnum dentatum</i> | Arrowwood Viburnum | 7 | 18 to 24 inch height | #3 Container | 6 to 10 Feet |

Evergreen Shrubs

| Symbol | Botanical Name | Common Name | Quantity | Size | Root | Mature Height |
|--------|------------------------------------|---------------------|----------|----------------------|----------------------|-----------------|
| MD | <i>Microbiota decussata</i> | Russian Cypress | 9 | 18 to 24 inch spread | #2 Container | 10 to 12 inches |
| TMD | <i>Taxus x media</i> 'Densifolmis' | Dense Spreading Yew | 23 | 18 to 24 inch spread | Balled and Burlapped | 3 to 4 Feet |

Broadleaf Evergreen Shrubs

| Symbol | Botanical Name | Common Name | Quantity | Size | Root | Mature Height |
|--------|-------------------------------------|-----------------------------|----------|----------------------|--------------|-----------------|
| ICG | <i>Ilex crenata</i> 'Green Luster' | Green Luster Japanese Holly | 10 | 15 to 18 inch spread | #3 Container | 3 to 4 Feet |
| IGS | <i>Ilex glabra</i> 'Strongbox' | Strongbox Inkberry Holly | 9 | 12 to 15 inch spread | #3 Container | 2 to 3 Feet |
| IGSR | <i>Ilex glabra</i> 'Shamrock' | Shamrock Inkberry Holly | 10 | 15 to 18 inch spread | #3 Container | 3 to 4 Feet |
| LAS | <i>Leucothoe axillaris</i> 'Squirt' | Squirt™ Compact Leucothoe | 16 | 12 to 15 inch spread | #3 Container | 18 to 24 inches |
| RAC | <i>Rhododendron x 'Amy Cotta'</i> | Amy Cotta Rhododendron | 4 | 15 to 18 inch height | #3 Container | 2 to 3 Feet |

Perennials

| Symbol | Botanical Name | Common Name | Quantity | Size | O.C. Spacing | Root | Mature Height |
|--------|-------------------------------------|-----------------------------|----------|---------------------|--------------|--------------|-----------------|
| LC | <i>Lobelia cardinalis</i> | Cardinal Flower | 25 | 8 to 12 inch height | 18 inches | #1 Container | 2 to 3 Feet |
| MXE | <i>Monarda</i> 'Electric Neon Pink' | Electric Neon Pink Bee Balm | 30 | 8 to 12 inch height | 18 inches | #1 Container | 20 to 24 inches |
| VH | <i>Verbena hastata</i> | Blue Vervain | 36 | 8 to 12 inch height | 24 inches | #1 Container | 4 to 6 Feet |

Ornamental Grasses

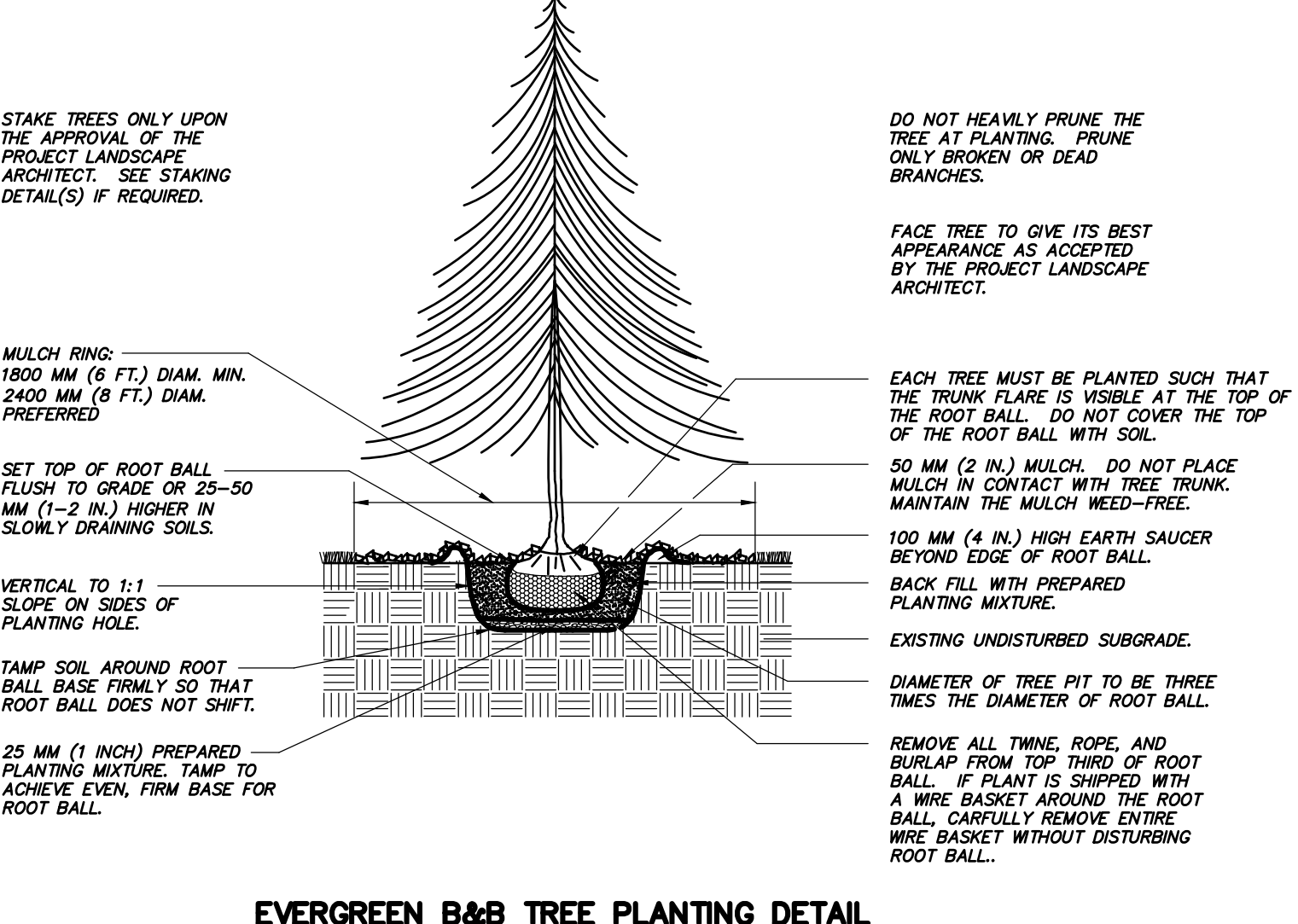
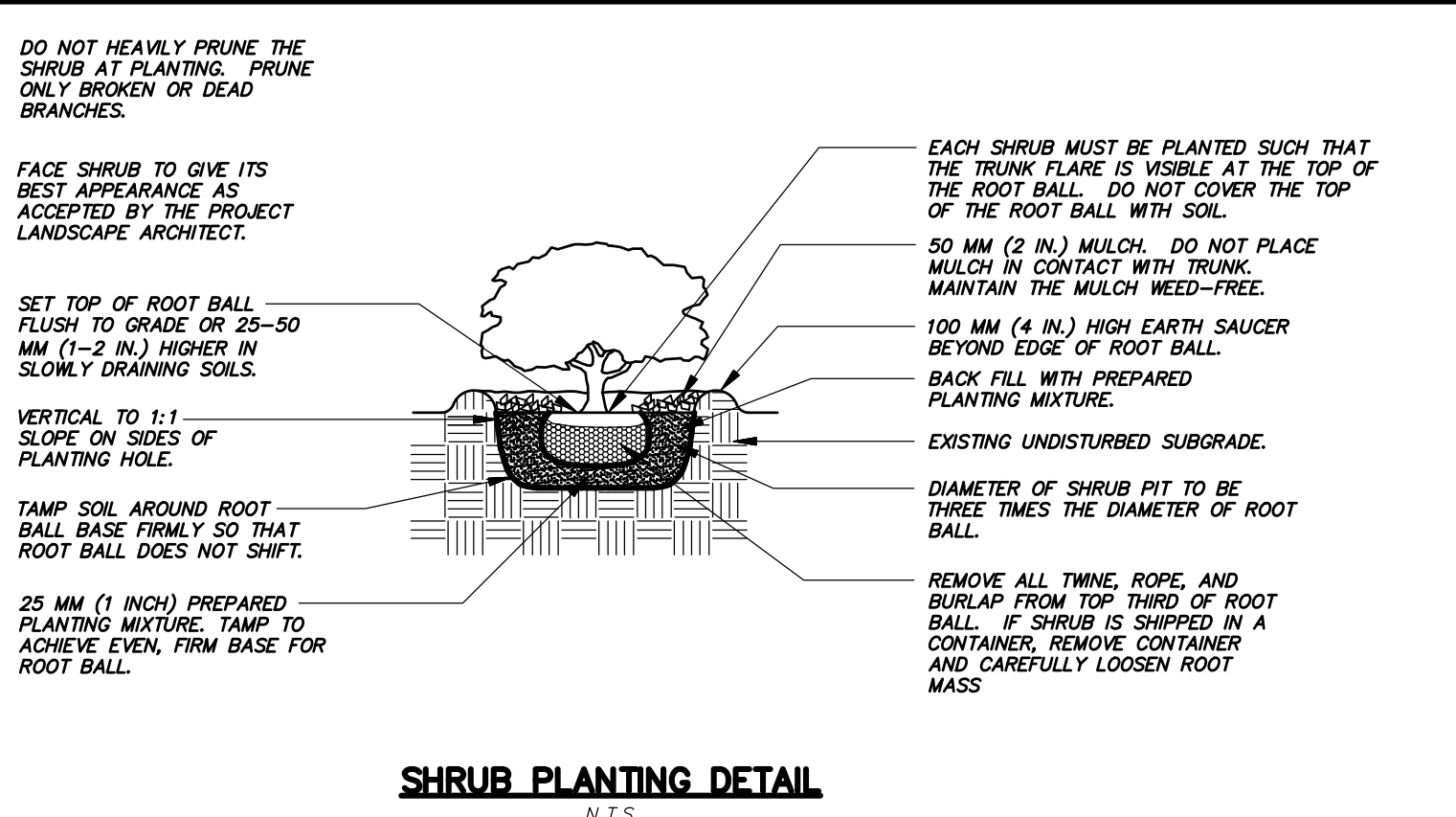
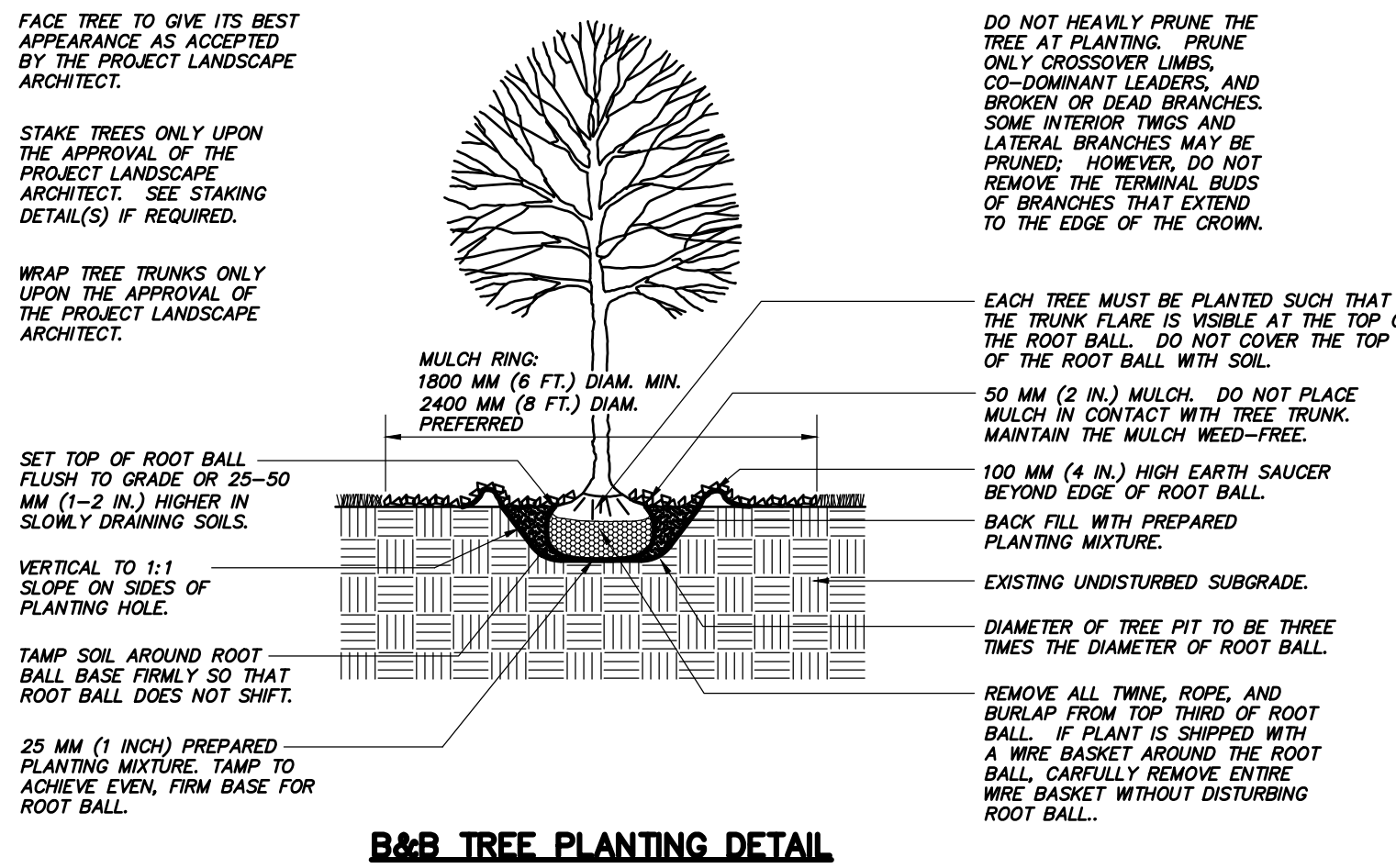
| Symbol | Botanical Name | Common Name | Quantity | Size | O.C. Spacing | Root | Mature Height |
|--------|---|--------------------------|----------|----------------------|--------------|--------------|-----------------|
| CFK | <i>Calamagrostis acutiflora</i> 'Karl Foerster' | Karl Foerster Reed Grass | 34 | 18 to 24 inch height | 36 inches | #1 Container | 4 to 6 Feet |
| CV | <i>Carex vulpinoidea</i> | Fox Sedge | 12 | 12 to 18 inch height | 24 inches | #1 Container | 12 to 36 inches |
| MC | <i>Muhlenbergia capillaris</i> | Muhly Grass | 6 | 12 to 18 inch height | 36 inches | #1 Container | 2 to 3 Feet |

GENERAL LANDSCAPE NOTES

- All plants shall meet or exceed the specifications of Federal, State and County laws requiring inspection for plant disease and insect control.
- Plant material shall conform with the "American Standard for Nursery Stock" by the American Association of Nurserymen, Inc. (ANSI Z60.1-2014).
- All plants shall be certified true to name by the nursery source. Plant names shall be in accordance with "Hortis Third" (1976) by the staff of the Liberty Hyde Bailey Hortorium, Cornell University. One plant from each species shall be tagged with name and size of the plant in accordance with the standards of practice of the American Association of Nurserymen. Botanical names shall take precedence over common names.
- Plant material shall be typical of their species and/or variety, with a normal habit of growth, sound, healthy and vigorous. They shall be well branched and densely foliated when in leaf, free of disease, insect pest, eggs or larvae. They shall have healthy well-developed root systems. All trees shall have straight single trunks with their main leader intact unless otherwise noted or approved.
- All landscaped areas to have 2" shredded bark mulch (color: black) over weed control fabric. No weed control fabric in areas of groundcover or perennial plantings.
- Provide protective covering of plant material during delivery and storage. Root balls shall not be cracked or broken. Do not prune plants prior to delivery. Remove unacceptable plant material immediately from the job site.
- Plant locations on the Drawings are approximate and are to be used only as a guide. Contractor shall provide all field engineering services to accurately stake out locations for all plants prior to installation. Do not begin excavation until Project Landscape Architect has approved specific layout.
- If requested by Project Landscape Architect, stake and guy each tree as shown on the applicable Drawings immediately after planting. Keep trees plumb and taut.
- If requested by Project Landscape Architect, wrap the trunks of all trees spirally from the ground line to above the lowest main branch.
- Perform all cultural care necessary to properly maintain plant viability and keep planted areas in a neat and orderly condition, including but not limited to:
 - Watering
 - Weed removal
 - Apply lime or sulphur to adjust soil pH to specific plant requirements
 - Restore or reshape earth saucers
 - Pruning
 - Adjust and tighten tree supports to maintain plants at their proper grades and vertical position
 - Replace mulch to maintain proper depth
- If there is a difference between the quantity of plant material specified on the Plan and the amount depicted on the Landscape Schedule, the amount on the Plan shall take precedence.
- All disturbed areas not covered by buildings, pavement or plantings shall be seeded or sodded lawn (see plan for specific treatment). New lawn areas shall receive a minimum of 6" topsoil of the proper pH and organic content suitable for the healthy growth of lawns. Contractor shall be responsible for mowing and watering during the guarantee period. Lawn areas shall be guaranteed for 60 days or second mowing, whichever is later.
- Spade edge all planting beds within lawn areas. Provide clean spaded edge at perimeter of all planting beds and tree pits adjacent to lawn areas. Spade edge of newly planted lawn areas following second mowing.
- All planting beds and tree pits to receive approved mulch to depths indicated in the planting details.
- Landscape Contractor shall guarantee all plant material for one (1) full year from date of acceptance. Proper landscape maintenance shall be the responsibility of the owner.
- Deciduous Shade Trees shall have a minimum branching height of five (5) feet.
- Plants shall be handled at all times in accordance with the best horticultural practices. Plants in-leaf shall be sprayed with anti-desiccant before digging. Plants shall be dug with firm natural balls and shall conform to the ratios and sizes as specified in ANSI Z60.1-2014. Balled and Burlapped plants shall be wrapped in burlap and tied firmly. Plant materials shall be delivered immediately prior to placement, shall be kept moist, and shall be protected from sun and wind. Plants having broken or cracked root balls prior to or during planting shall not be accepted.
- All single trunk, deciduous trees shall be wrapped immediately after planting with tree wrap. Wrap shall be wound spirally, from the bottom of the trunk to the second branches. All trees in windy areas shall be staked or guyed immediately after planting.
- The period of planting shall be from March 15th to May 15th and from September 15th to November 15th, weather permitting.
- All locations of existing and proposed utilities may not be shown on this plan. See other plan sheets for existing and proposed utility locations. Contractor shall be solely responsible for determining actual locations of utilities. Utility conflicts may require adjustments to proposed landscape installation. Contractor shall be responsible for repair on any utilities damaged during construction. Contractor shall contact "Call Before You Dig" 1-800-922-4455 (www.cbyd.com) two (2) working days prior to starting landscape installation to locate utilities.
- The south bank of Salmon Brook is part of the work for this project. Work shall include clearing of the undesirable existing vegetation (without herbicide) - to be coordinated with Project Landscape Architect and Town Staff. Install plant material as shown on the plan and sow "New England Erosion Control Restoration Mix for Moist Soils" on the entire slope. Install Straw Blanket on side slope to within five (5) feet of water course line. Staple Straw Blanket to slope as specified by supplier. 'Shingle' Straw Blanket sections with twenty-four (24) inch minimum overlap to prevent erosion.

RAIN GARDEN NOTES

- Contractor shall define both Rain Garden areas (Rain Garden #1 and Rain Garden #2) and shall excavate to a depth of thirty-six (36) inches below finished grade.
- Install twelve (12) inches depth of clean sand.
- Mix Rain Garden Soil thoroughly before installation, using by volume:
 - 3 Parts Sand
 - 4 Parts Loamy Soil
 - 3 Parts Organic Compost
- Install Rain Garden Soil mix to a lightly compacted depth of twenty-four (24) inches, meeting proposed final grades.
- The Rain Gardens are shown with some landscape material installed on the peripheral areas of these Rain Gardens. Install this plant material in a continuous shredded bark mulch bed. Contractor shall outline these mulch beds for approval by the Project Landscape Architect prior to installation.
- Install trees in areas depicted on the plans.
- Prepare Rain Gardens as outlined in notes #1 through #4 above. Plant potted peripheral landscape material and trees in areas shown on plan. Install Sod on prepared Rain Garden Soil in areas as depicted on the plan. Spade edge border between Sod and mulched landscaped areas. Leave 4 foot diameter mulch ring around installed trees.



SEED TYPES

Seed Type A

Sun & Shade Mixture

By: Jonathan Green or approved equal

Seed rate: 25 pounds per 9,375 square feet

20% Darkstar II Perennial Ryegrass
20% Carmen Chewings Fescue
15% Deepblue Kentucky Bluegrass
15% Eugene Creeping Red Fescue
15% Yorkshire Dales Perennial Ryegrass
15% Salisbury Chewings Fescue

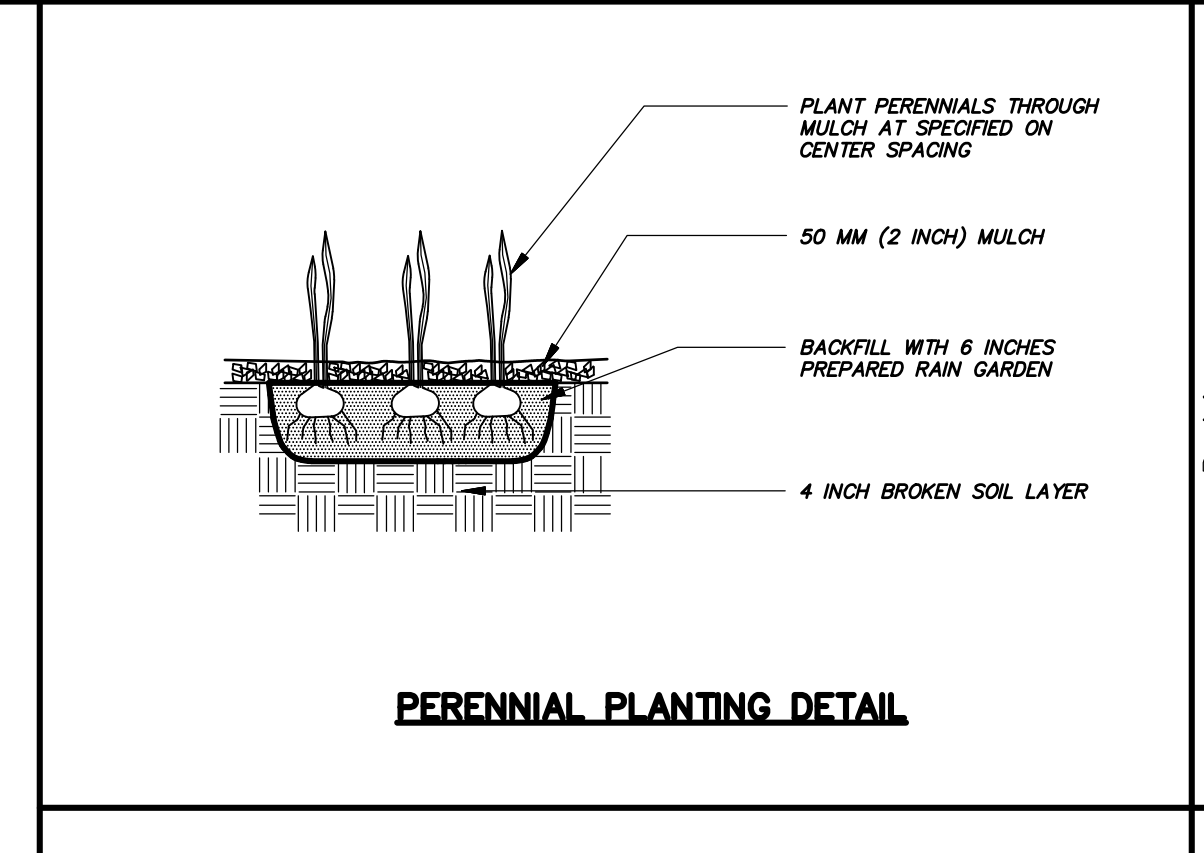
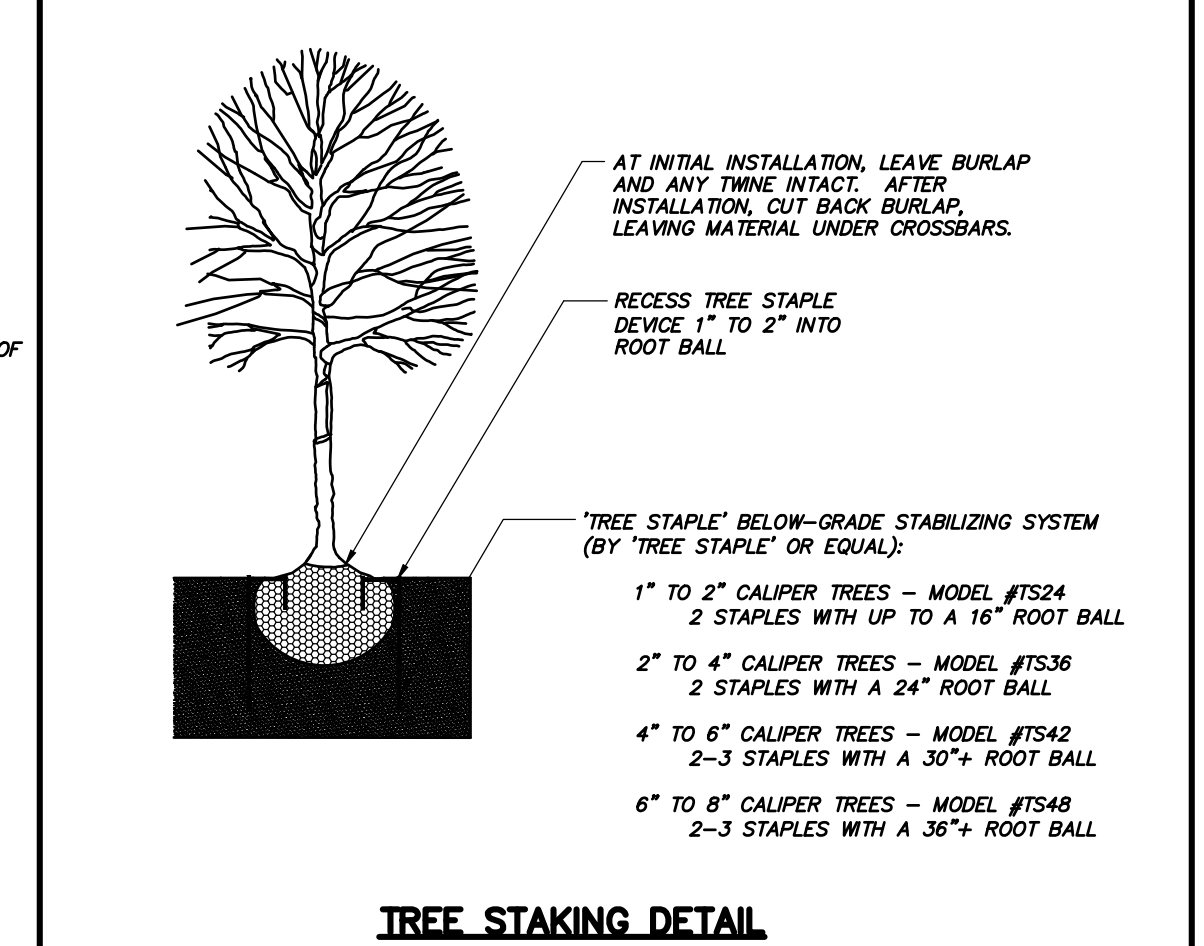
Seed Type B

New England Erosion Control / Restoration Mix for Moist Sites

By: New England Wetland Plants, Inc. or approved equal

Seed rate: 35 pounds per Acre or 1,250 sq. ft. per pound

Riverbank Wild Rye (*Elymus riparius*), Creeping Red Fescue (*Festuca rubra*), Little Bluestem (*Schizachyrium scoparium*), Big Bluestem (*Andropogon gerardii*), Switch Grass (*Panicum virgatum*), Upland Bentgrass (*Agrostis perennans*), Nodding Bur Marigold (*Bidens cernua*), Hollow-Stem Joe Pye Weed (*Eupatorium fistulosum* / *Eutrochium fistulosum*), New England Aster (*Aster novae-angliae*), Boneset (*Eupatorium perfoliatum*), Blue Vervain (*Verbena hastata*), Soft Rush (*Juncus effusus*), Wool Grass (*Scirpus cyperinus*)



TOWN PLAN & ZONING COMMISSION APPROVAL

THE CAR WASH CENTER GLASTONBURY / TWTC HOLDINGS Glastonbury, LLC. FLOOD ZONE/ PBD

PROJECT / APPLICANT ZONE

2756 MAIN STREET

PROJECT ADDRESS

4:11 / 12:0

SPECIAL PERMIT SECTION T.P.&Z. CHAIRMAN

SPECIAL PERMIT APPROVAL DATE COMMUNITY DEVELOPMENT DIRECTOR

NOTE: ALL SHEETS OF THIS PLAN SET ARE LOCATED IN THE OFFICE OF COMMUNITY DEVELOPMENT.

UNDERGROUND UTILITY NOTE:
UNDERGROUND UTILITY, STRUCTURE AND FACILITY LOCATIONS DEPICED AND NOTED HEREON HAVE BEEN COMPILED, IN PART, FROM RECORD MAPPING SUPPLIED BY THE RESPECTIVE UTILITY COMPANIES OR GOVERNMENTAL AGENCIES, FROM PAROLE TESTIMONY AND FROM OTHER SOURCES. THESE LOCATIONS MUST BE CONSIDERED AS APPROXIMATE IN NATURE. ADDITIONALLY, OTHER SUCH FEATURES MAY EXIST ON THE SITE, THE EXISTENCE OF WHICH ARE UNKNOWN TO THE UNDERSIGNED. THE SIZE, LOCATION AND EXISTENCE OF ALL SUCH FEATURES MUST BE FIELD DETERMINED AND VERIFIED BY THE APPROPRIATE AUTHORITIES PRIOR TO CONSTRUCTION. CALL BEFORE YOU DIG 1-800-922-4455 OR 811.

INSPECTION NOTE:
THE CONTRACTOR SHALL NOTIFY THE TOWN OF GLASTONBURY ENGINEERING DIVISION 24 HOURS PRIOR TO BEGINNING ANY STORM DRAINAGE, SANITARY SEWER INSTALLATION, ROADWAY PREPARATION, PAVING, SIDEWALK, CURBING, OR ANY EXCAVATION IN THE TOWN RIGHT-OF-WAY TO SCHEDULE INSPECTIONS. THE DIVISION CAN BE REACHED BETWEEN 8:00 AM - 4:30 PM MONDAY THROUGH FRIDAY AT (860)-652-7735.

F. A. Hesketh & Associates, Inc.
3 Creamery Brook, East Granby, CT 06026
Phone (860) 653-8000 Fax (860) 844-8600
www.fahsketh.com · maff@fahsketh.com

FAH

Civil & Traffic Engineers · Planners · Landscape Architects

| No. | Date | Description |
|-----|------------|---------------|
| 1 | 03-09-2022 | Town comments |
| 2 | 03-21-2022 | Town comments |

Revisions:

LANDSCAPE SCHEDULE, DETAILS AND NOTES

PREPARED FOR
**THE CAR WASH CENTER
GLASTONBURY**
2756 MAIN STREET
GLASTONBURY, CONNECTICUT

Drawn by: KLL Job no: 21186
Date: 02-10-2022

Scale: NO SCALE Checked by: DSZ Sheet no: 2 OF 2
Scale: Glastonbury Carwash Submittal\2022-03-21\2022-03-21.dwg, LS-2, Mar. 17, 2022 - 11:55:04 AM

LS-2