

You Are Invited To A
PUBLIC INFORMATION MEETING

MAIN STREET PAVEMENT REHABILITATION
and
BICYCLE/PEDESTRIAN IMPROVEMENTS –
GATEWAY AREA

TO BE HELD

Tuesday, March 22, 2022
at 8:00 P.M.

Council Chambers of Town Hall
2155 Main Street, Glastonbury
And/or Through Zoom Video Conferencing

The Town is awarded grants per the LOTCIP Grant Program for the Main Street (School Street to New London Turnpike/Naubuc Avenue) pavement rehabilitation project (\$2M±) and construction of new sidewalks (Eastern and Western Boulevard, National Drive) within the Gateway area (\$1M±).

The Glastonbury Town Council has scheduled a public information hearing on Tuesday, March 22, 2022 at 8:00 p.m. to be held in Council Chambers of Town Hall, 2155 Main Street, Glastonbury and/or through Zoom Video Conferencing to hear public comment on this matter. This public information hearing is required by the LOTCIP Grant Program.

Plans are posted to the website and can be found at www.glastonburyct.gov/legalnotice. Please note plans are preliminary and are not detailed to include phasing, schedules, hours of operation, detours, etc., which will be determined as design and bidding proceeds. This information will be the subject of future communications and meetings with property and business owners.

You can access the public information hearing at the link below:

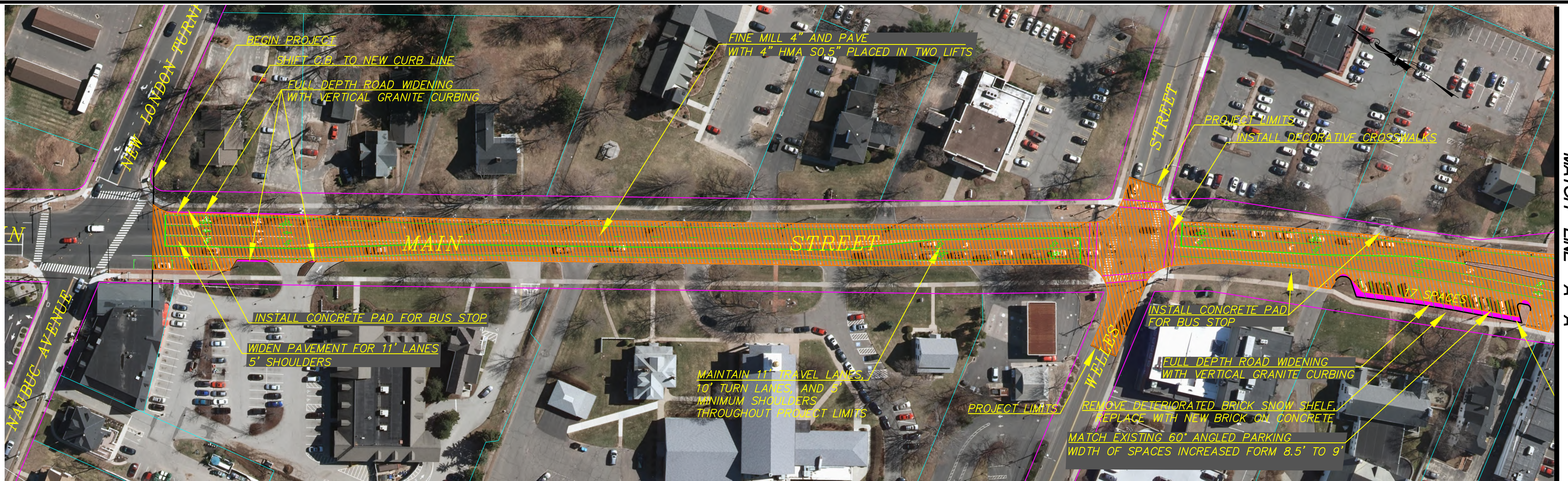
Join Zoom Meeting:

<https://us06web.zoom.us/j/87987368459?pwd=Vm5lOG14dkJlS2NiRno4Zkllem9tUT09>

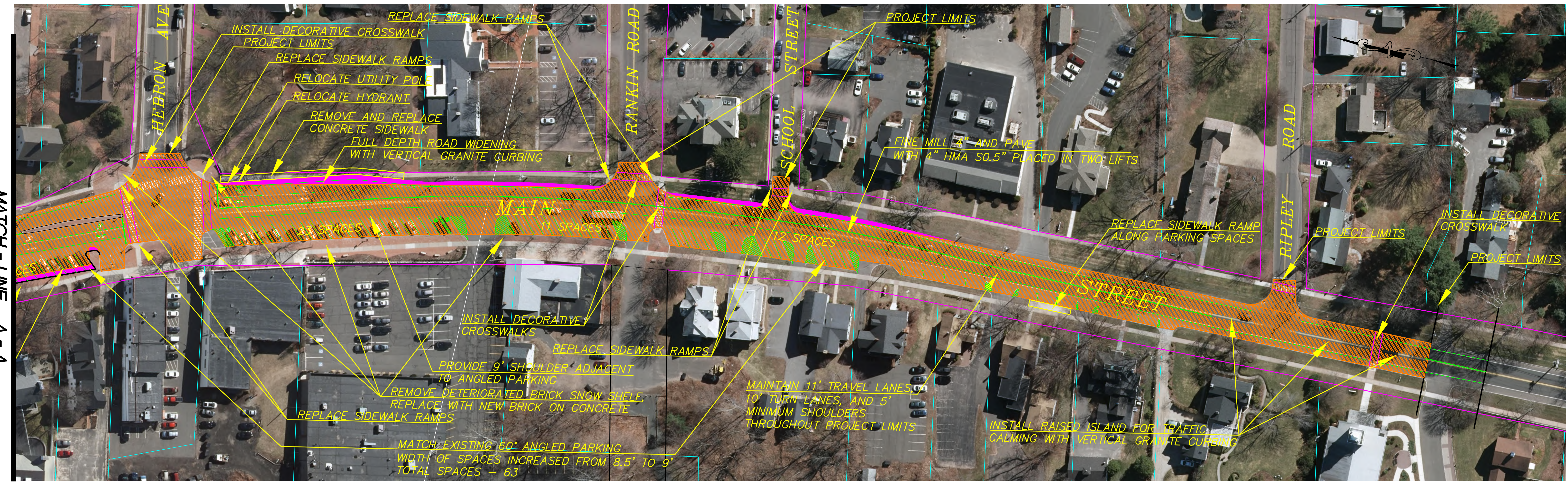
Join by Phone: +1 646 558 8656

Webinar ID: 879 8736 8459 Passcode: 022650

FILE: H:\DWG\Streets\Main St\PW-2003 MAIN STREET TRAFFIC CALMING 02-20-2019\14-2004 Main St Pavement Rehab.dwg USER: Steven Troy DATE: 12/17/2021

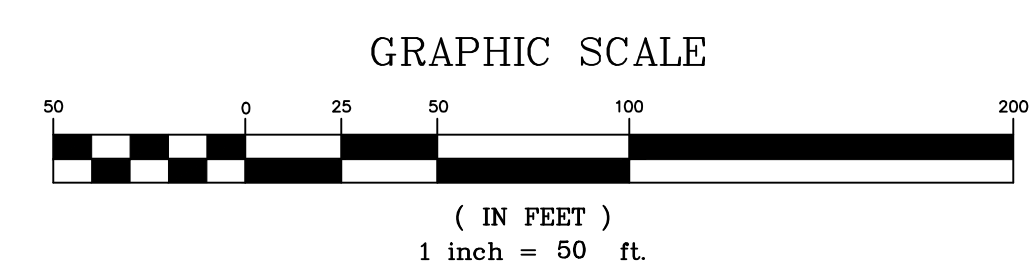


MATCH - LINE A - A

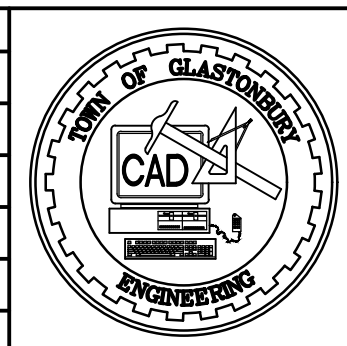


MATCH - LINE A - A

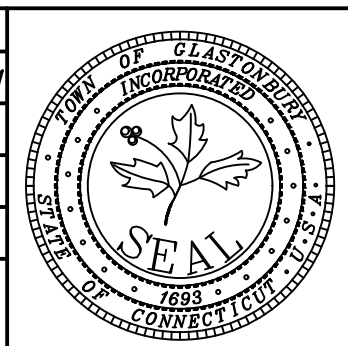
NOTE: REPLACE ALL CATCH BASIN TOPS WITHIN PROJECT LIMITS



| DRAWING ISSUE STATUS | | |
|----------------------|-------------|-------|
| NO. | DESCRIPTION | DATE |
| 1. | ----- | ----- |



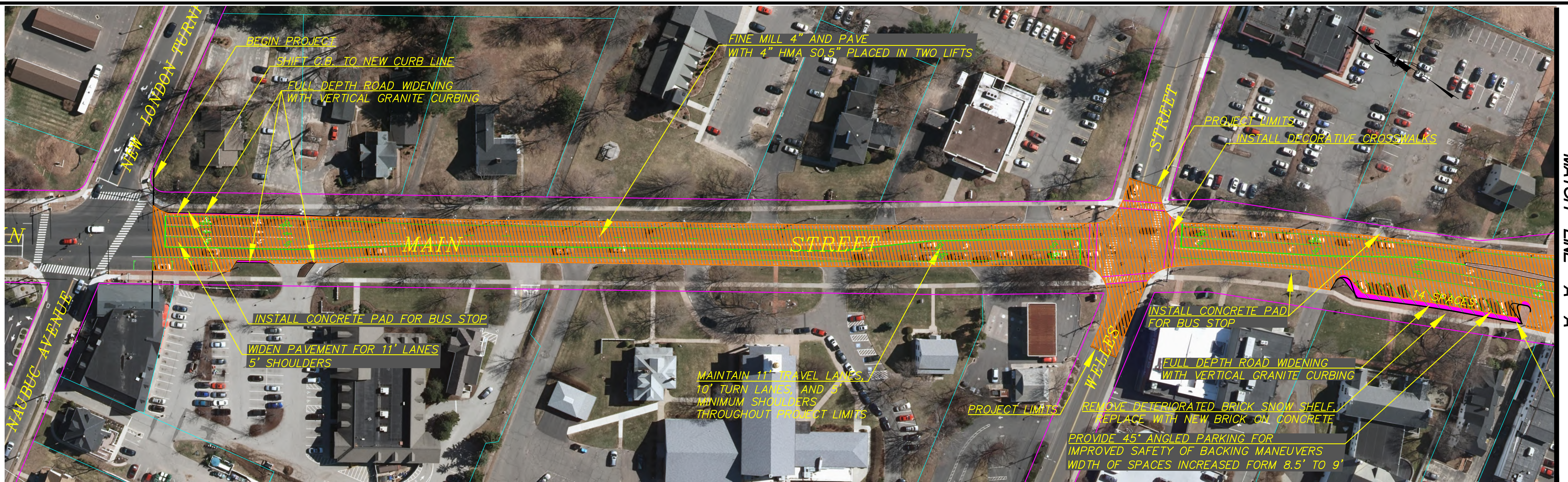
| | |
|---------------------|--------------------|
| SCALE: AS SHOWN | DATE: 12-15-2021 |
| DRAWN BY: S.Troy | CHECKED BY: S.M.B. |
| APPROVED BY: D.A.P. | ST. FILE: ----- |



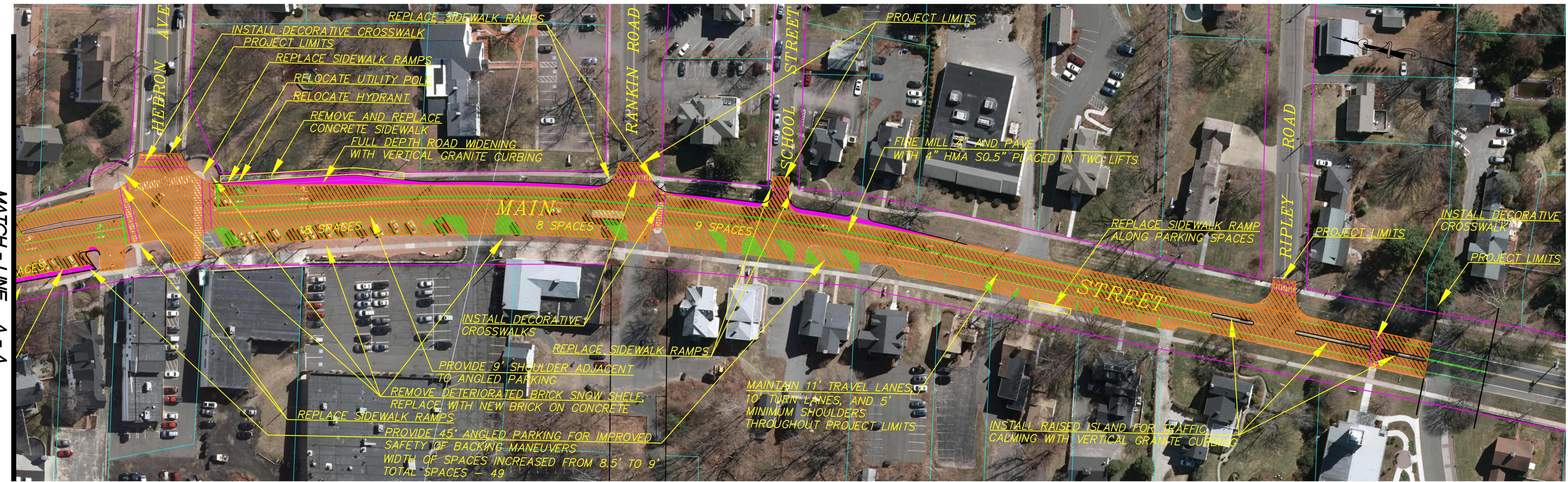
PLAN DEPICTING
 MAIN STREET PAVEMENT REHABILITATION
 RIPLEY ROAD TO NEW LONDON TURNPIKE
 OPTION 1
 60° ANGLED PARKING
 GLASTONBURY, CONNECTICUT

SHEET NO.
1
 OF 4

FILE: H:\DWG\Streets\Main St\PW-2003 MAIN STREET TRAFFIC CALMING 02-20-2020\14-2004 Main St Pavement Rehab.LOT\DWG Applications\PW-2004 Main St Pavement Rehab.dwg USER: Steven Troy DATE: 12/7/2021

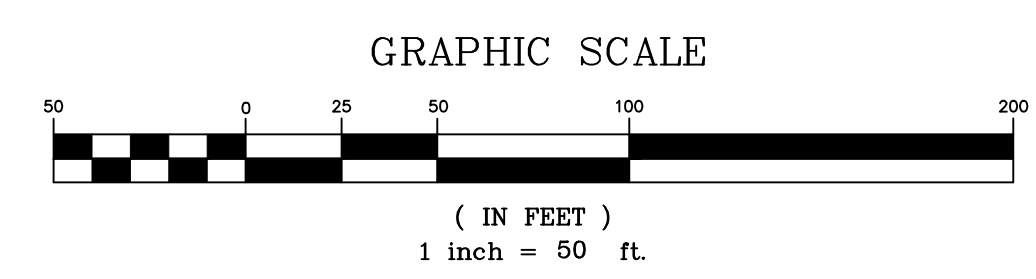


MATCH - LINE A - A

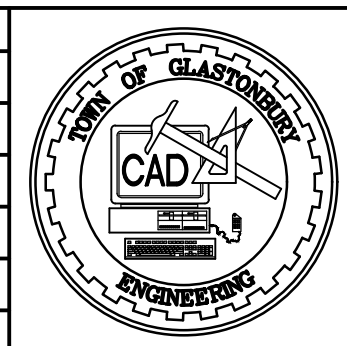


MATCH - LINE A - A

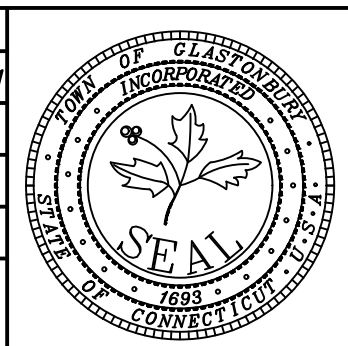
NOTE: REPLACE ALL CATCH BASIN TOPS WITHIN PROJECT LIMITS



| DRAWING ISSUE STATUS | | |
|----------------------|-------------|-------|
| NO. | DESCRIPTION | DATE |
| 1. | ----- | ----- |



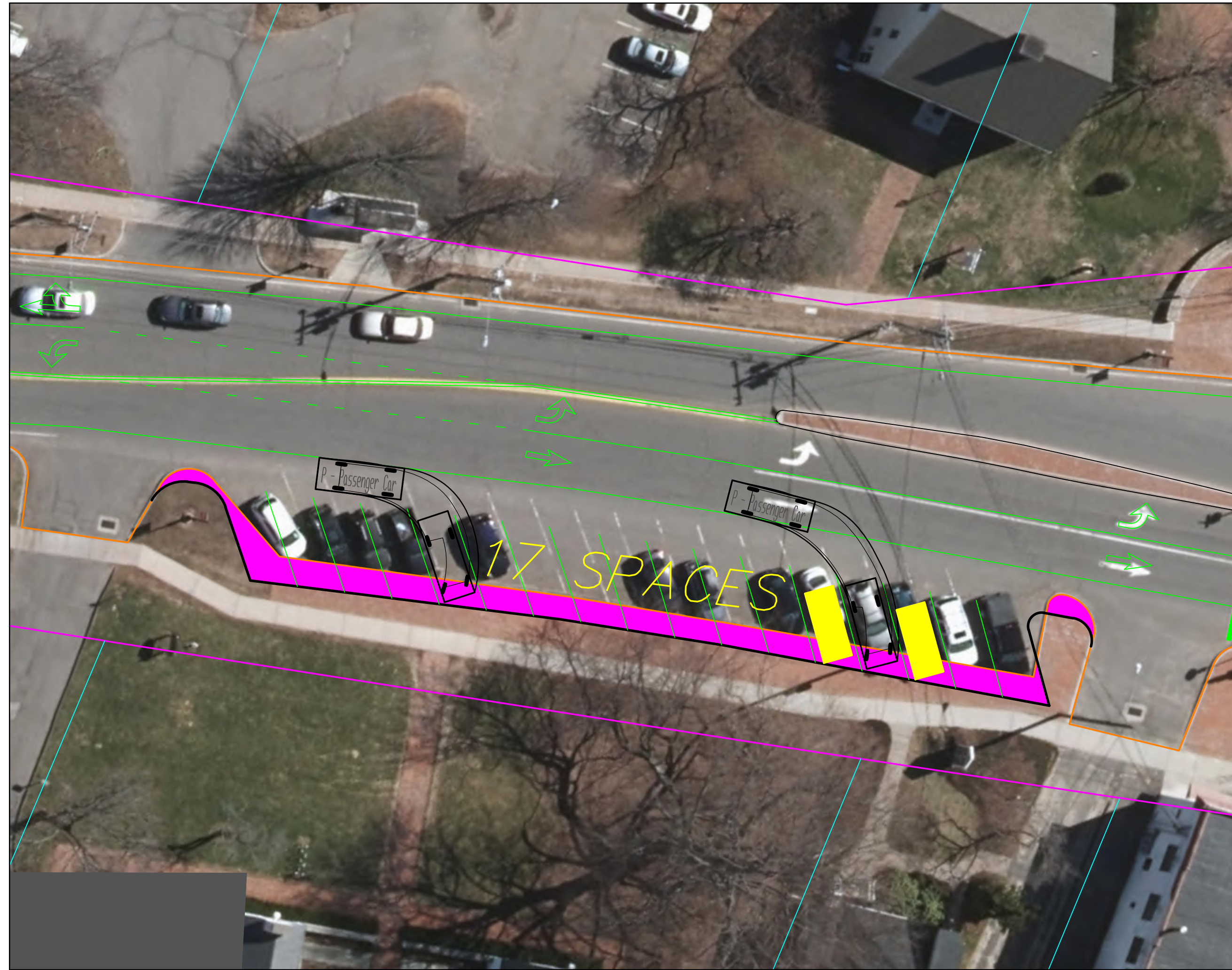
| | |
|---------------------|--------------------|
| SCALE: AS SHOWN | DATE: 12-15-2021 |
| DRAWN BY: S.Troy | CHECKED BY: S.M.B. |
| APPROVED BY: D.A.P. | ST. FILE: ----- |



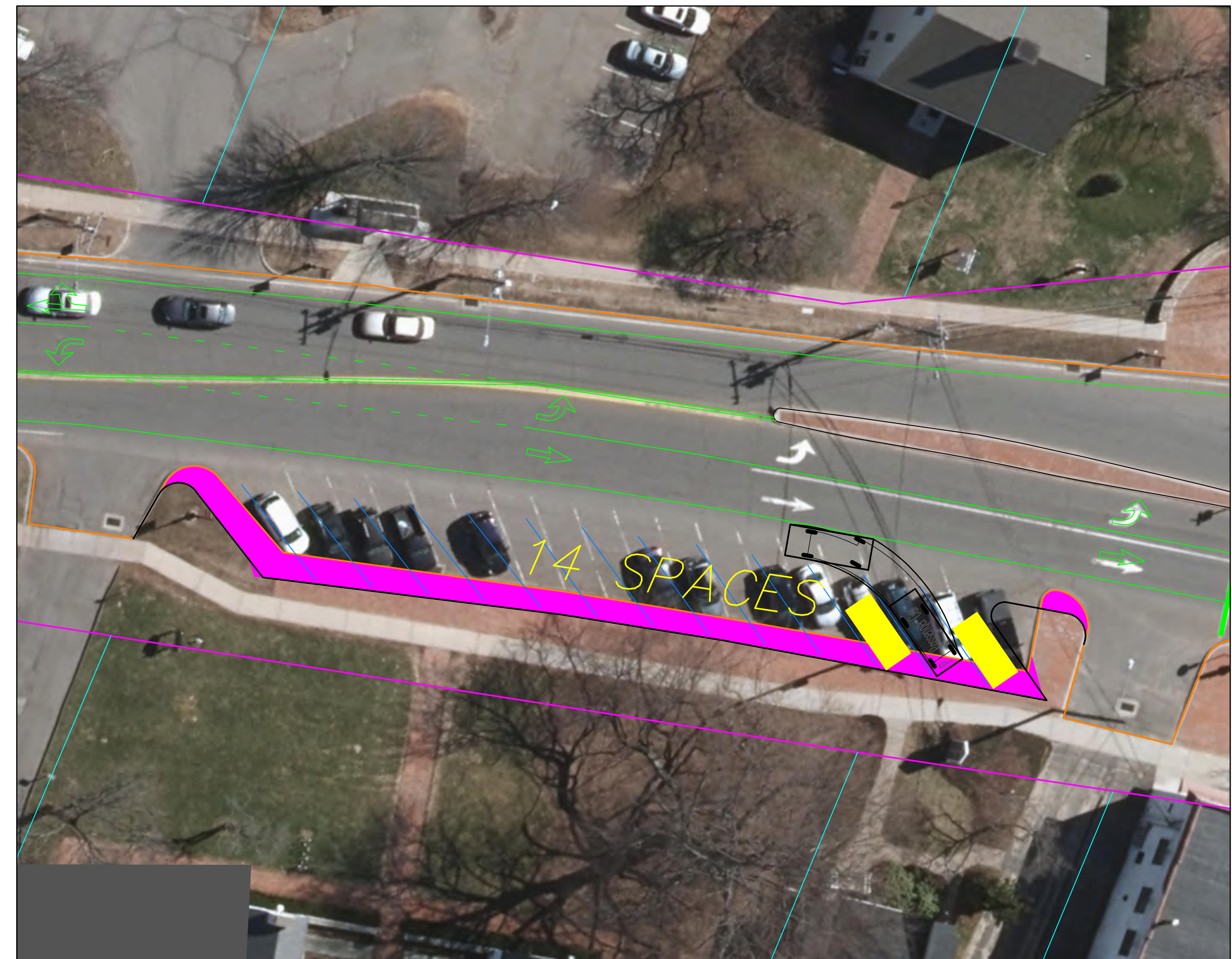
PLAN DEPICTING
 MAIN STREET PAVEMENT REHABILITATION
 RIPLEY ROAD TO NEW LONDON TURNPIKE
 OPTION 2
 45° ANGLED PARKING
 GLASTONBURY, CONNECTICUT

SHEET NO.
2
 OF 4

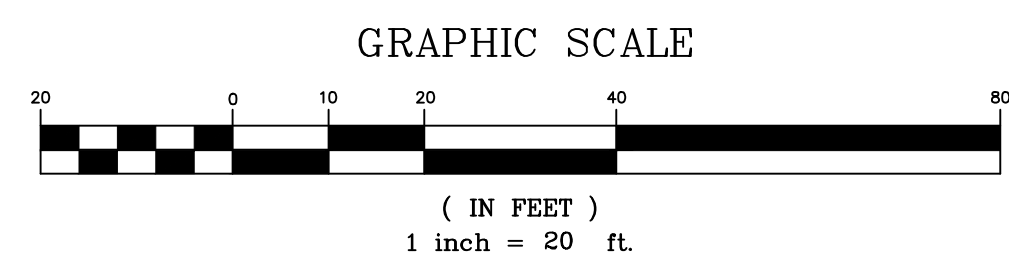
FILE: H:\DWG\Streets\Main St\PW-2003 MAIN STREET TRAFFIC CALMING 02-20-2009\PW-2004 Main St Pavement Rehab LOT\CP Application\PH-2004 Main Street Pavement Rehab.dwg USER: Steven Troy DATE: 12/7/2021



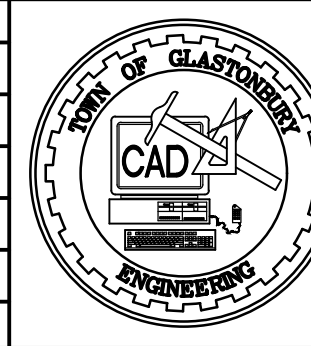
DETAIL DEPICTING
60° ANGLED PARKING
BACKING MANEUVER FOR PASSENGER CAR
1"=20'



DETAIL DEPICTING
45° ANGLED PARKING
BACKING MANEUVER FOR PASSENGER CAR
1"=20'

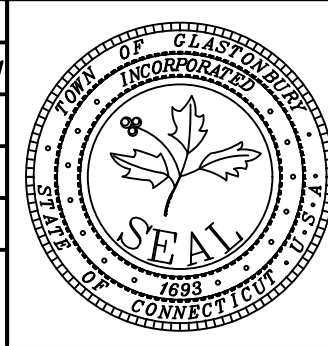


| DRAWING ISSUE STATUS | | |
|----------------------|-------------|------|
| NO. | DESCRIPTION | DATE |
| 1. | ----- | ---- |



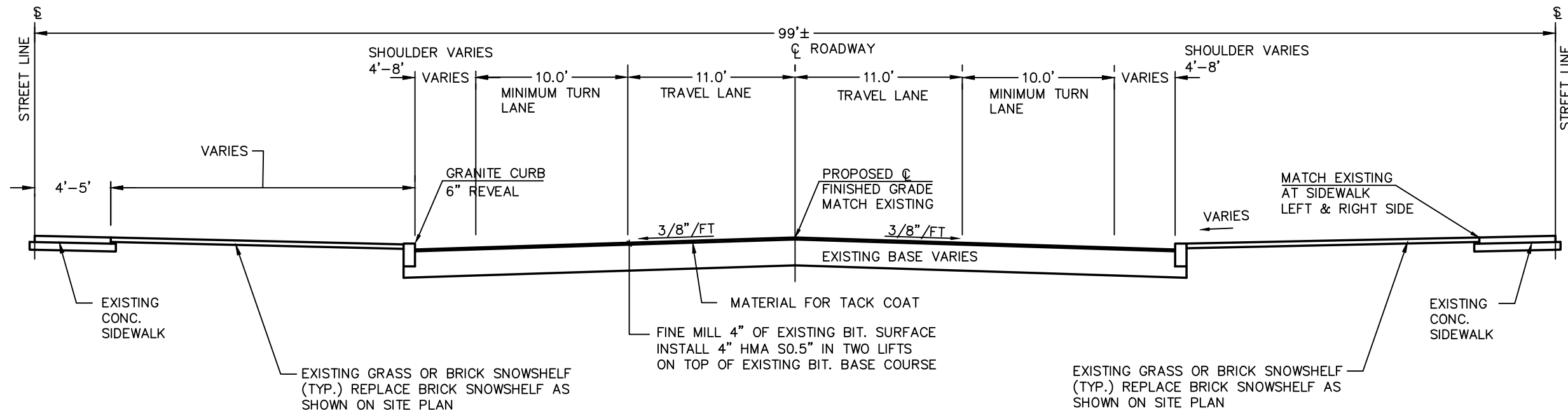
| | |
|---------------------|------------|
| SCALE: AS SHOWN | DATE: |
| DRAWN BY: S.Troy | 12-15-2021 |
| CHECKED BY: S.M.B. | ---- |
| APPROVED BY: D.A.P. | ---- |
| ST. FILE: | |

DO NOT SCALE THIS DRAWING. USE THE DIMENSIONS GIVEN. IF THERE ARE ANY DISCREPANCIES OR QUESTIONS, CONTACT THE TOWN OF GLASTONBURY, ENGINEERING OFFICE.

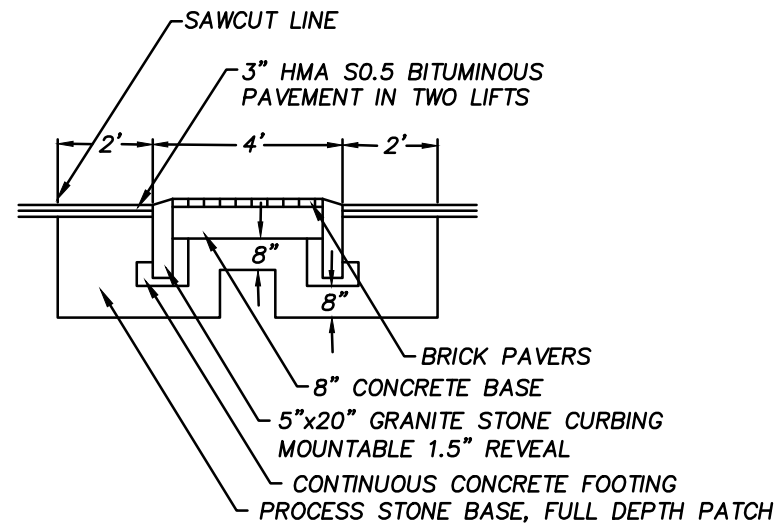


PLAN DEPICTING
VEHICULAR PARKING
FOR
MAIN STREET
GLASTONBURY, CONNECTICUT

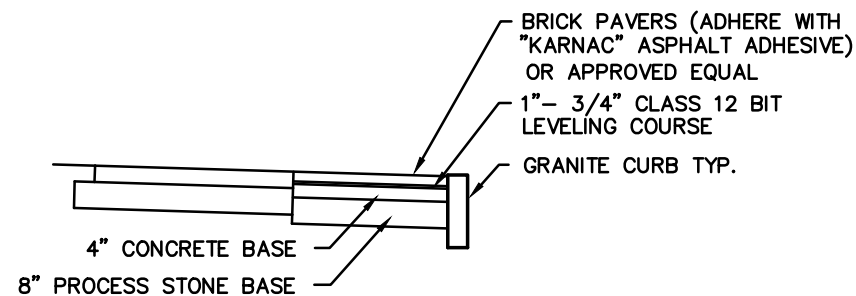
SHEET NO.
3
OF 4



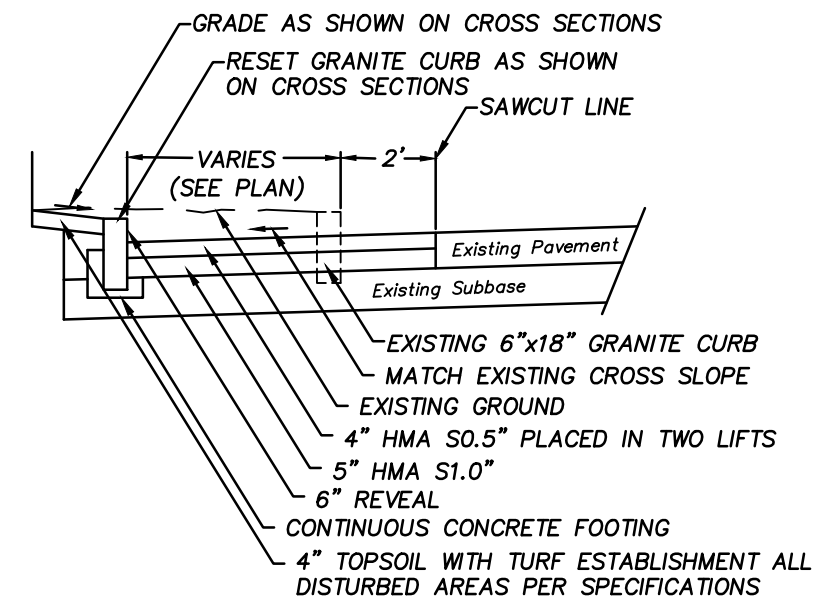
FINE MILLING 4" OVERLAY TYPICAL CROSS SECTION



RAISED ISLAND WITH MOUNTABLE CURB
(NOT TO SCALE)

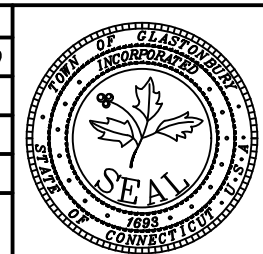


(FOR NEW BRICK AREAS ONLY)
BRICK SIDEWALK ON CONCRETE BASE DETAIL
NOT TO SCALE



FULL DEPTH WIDENING TYPICAL CROSS SECTION
(NOT TO SCALE)

| DRAWING ISSUE STATUS | | SCALE: AS SHOWN | DATE: |
|----------------------|-------------|---------------------|--|
| | | DRAWN BY: S.Troy | 3-6-2020 |
| | | CHECKED BY: S.M.B. | ---- |
| | | APPROVED BY: D.A.P. | ---- |
| | | ST. FILE: | |
| 1. | ---- | ---- | ---- |
| NO. | DESCRIPTION | DATE | DO NOT SCALE THIS DRAWING. USE THE DIMENSIONS GIVEN. IF THERE ARE ANY DISCREPANCIES OR QUESTIONS, CONTACT THE TOWN OF GLASTONBURY, ENGINEERING OFFICE. |



TYPICAL CROSS SECTION
PAVEMENT REHABILITATION
FOR
MAIN STREET
GLASTONBURY, CONNECTICUT

SHEET NO.
4
OF 4