

You Are Invited To A
PUBLIC INFORMATION MEETING

MAIN STREET PAVEMENT REHABILITATION

and

BICYCLE/PEDESTRIAN IMPROVEMENTS –

GATEWAY AREA

TO BE HELD

Tuesday, March 22, 2022

at 8:00 P.M.

***Council Chambers of Town Hall
2155 Main Street, Glastonbury
And/or Through Zoom Video Conferencing***

The Town is awarded grants per the LOTCIP Grant Program for the Main Street (School Street to New London Turnpike/Naubuc Avenue) pavement rehabilitation project (\$2M±) and construction of new sidewalks (Eastern and Western Boulevard, National Drive) within the Gateway area (\$1M±).

The Glastonbury Town Council has scheduled a public information hearing on Tuesday, March 22, 2022 at 8:00 p.m. to be held in Council Chambers of Town Hall, 2155 Main Street, Glastonbury and/or through Zoom Video Conferencing to hear public comment on this matter. This public information hearing is required by the LOTCIP Grant Program.

Plans are posted to the website and can be found at www.glastonburyct.gov/legalnotice. Please note plans are preliminary and are not detailed to include phasing, schedules, hours of operation, detours, etc., which will be determined as design and bidding proceeds. This information will be the subject of future communications and meetings with property and business owners.

You can access the public information hearing at the link below:

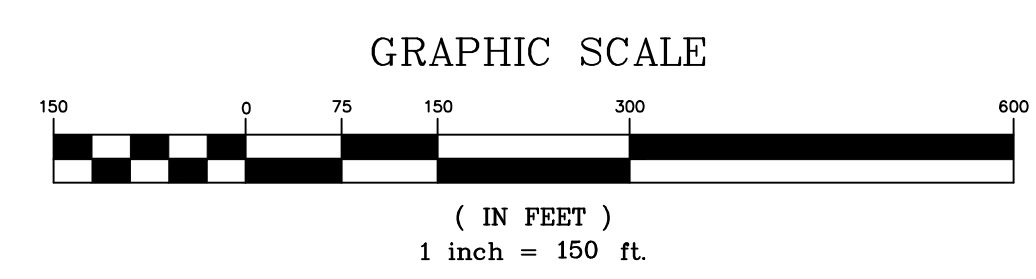
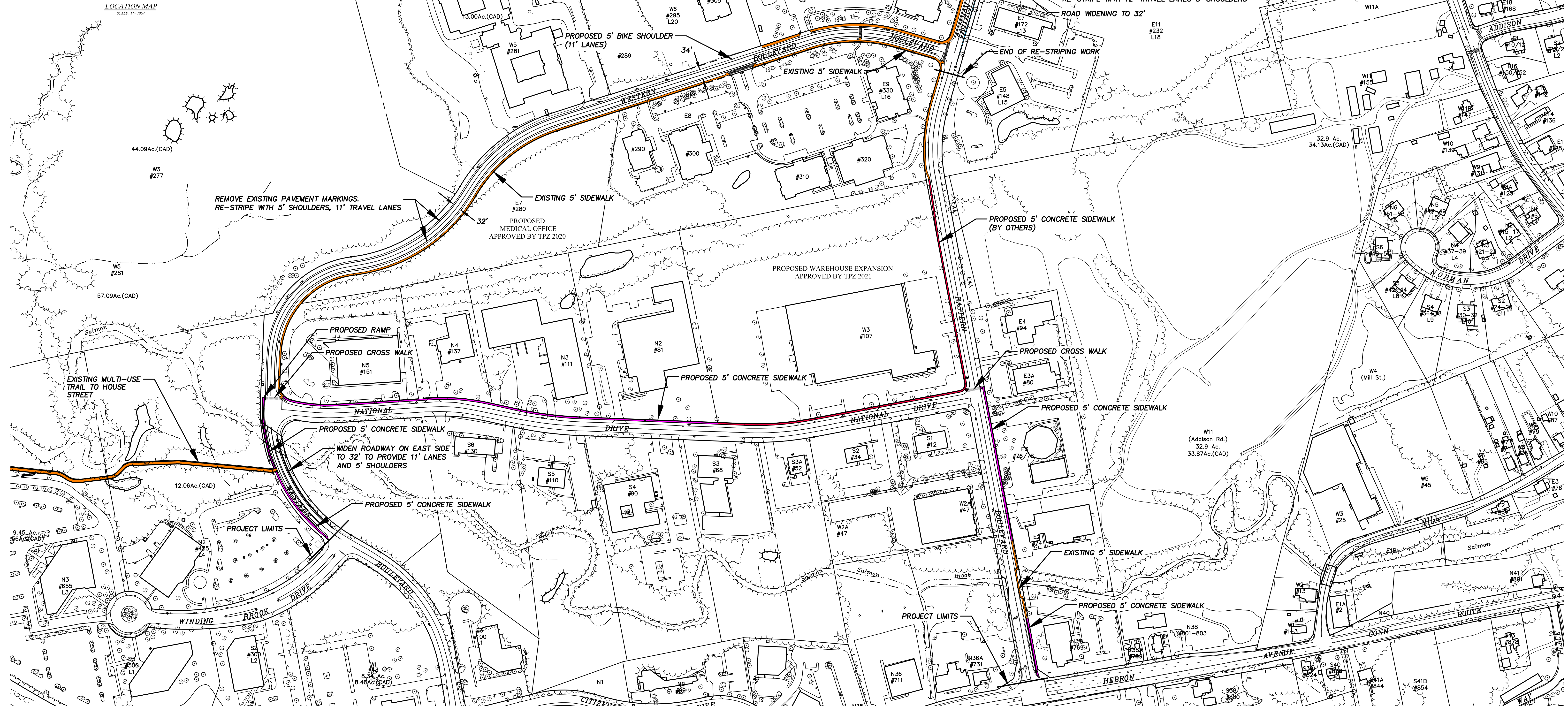
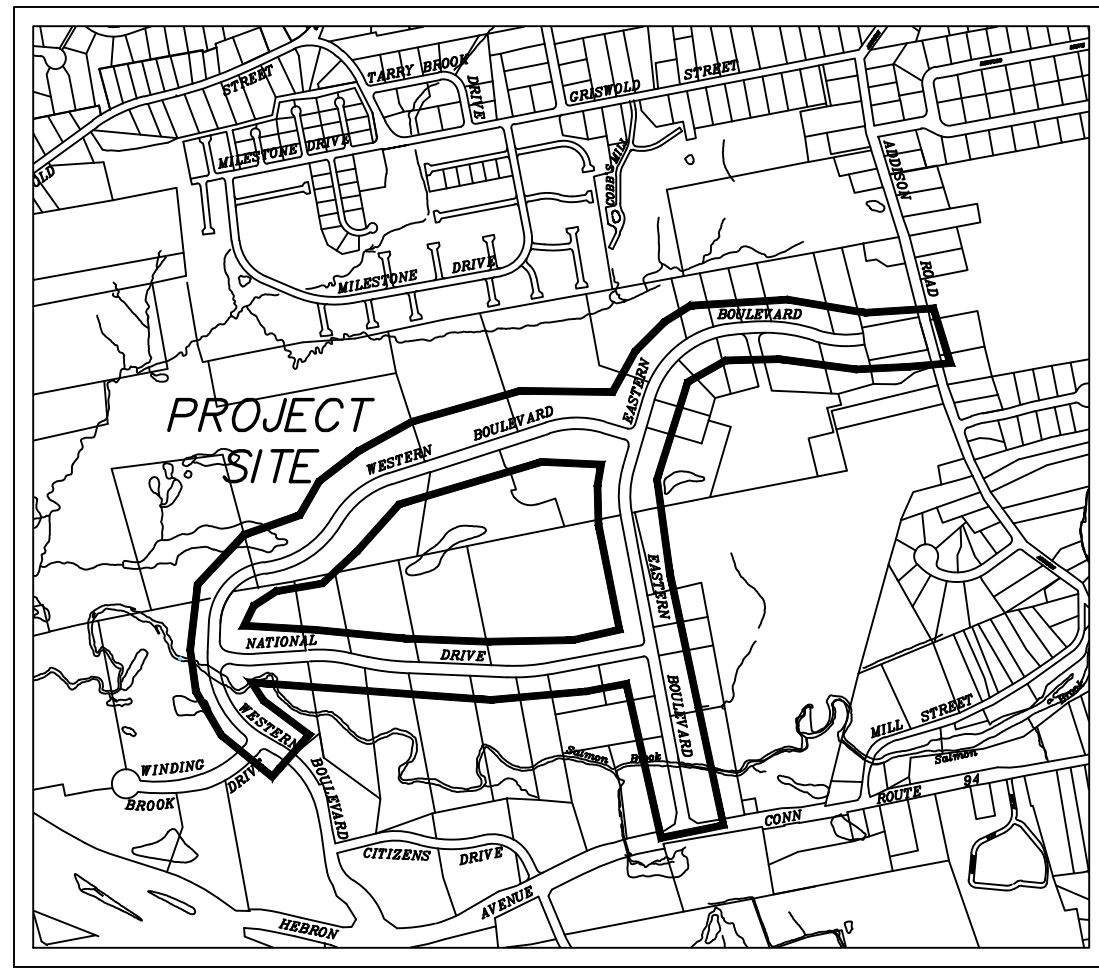
Join Zoom Meeting:

<https://us06web.zoom.us/j/87987368459?pwd=Vm5lOG14dkJlS2NiRno4Zkllem9tUT09>

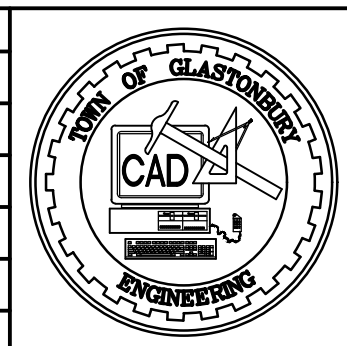
Join by Phone: +1 646 558 8656

Webinar ID: 879 8736 8459 Passcode: 022650

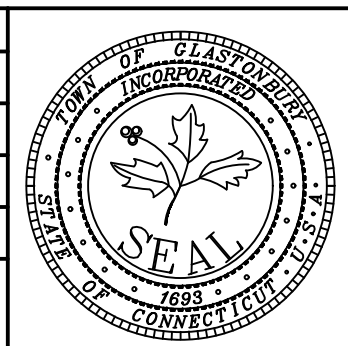
FILE: H:\DWG\Streets\Western Blvd\FW-1703 Smith School to Western Blvd Lane Gateway Corporate Park Bicycle and Pedestrian Improvements.dwg USER: Steven Troy DATE: 10/28/2021



DRAWING ISSUE STATUS		
NO.	DESCRIPTION	DATE
1.		



SCALE: AS SHOWN	DATE: 3-16-2020
DRAWN BY: S.Troy	CHECKED BY: S.M.B.
APPROVED BY: D.A.P.	ST. FILE:



**CONCEPT PLAN
PROPOSED BICYCLE AND
PEDESTRIAN IMPROVEMENTS
FOR
GATEWAY CORPORATE PARK
GLASTONBURY, CONNECTICUT**

SHEET NO.
1
OF 1