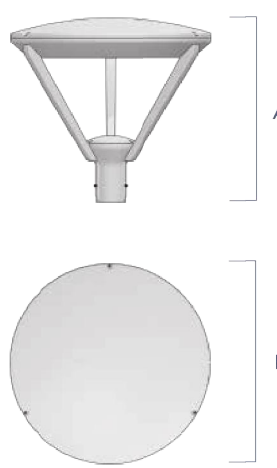




DIMENSIONS



FIXTURE	A	B
ATR1	22"	24"
ATR2	17"	18"

LUMINAIRE HOUSING & ARMS
Spun aluminum (alloy 6063; ≥ 1% Cu) top and optical housing fully gasketed at joint. Three cast aluminum support arms are internally welded to the optical housing and externally to the cast aluminum (alloy A356; ≥ 2% Cu) tenon hub. Welds between arm and hub are blended to create a smooth appearance. Hub has a removable cap to access primary incoming wiring. The optical mounting plate is recessed to provide venting of the housing.

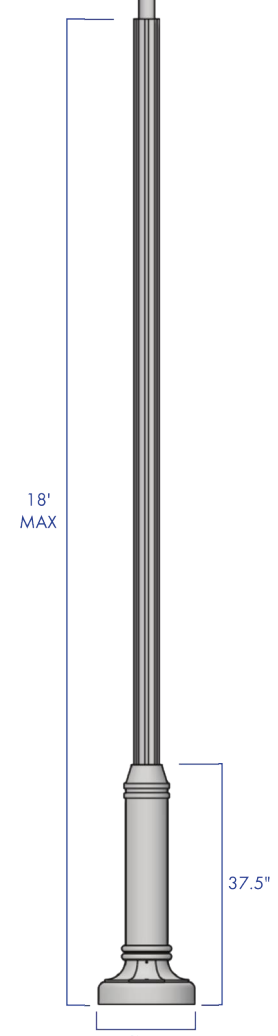
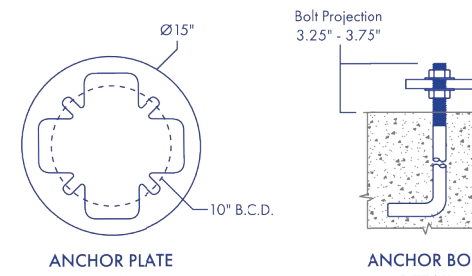
LED EMITTERS & OPTICS
Optical plate of .125" sheet aluminum (alloy 6063; ≥ -1% Cu) provides mounting surface for the 4-Squared Optics. Internally, extruded aluminum heatsinks are located behind each optic. Optical plate is recessed to shield the 4-Squared optics providing a U0 uplight rating from the optical system. The 4-Squared emitters have 4 emitters per die with 4 dies per optic allowing 16 emitters per 4-Squared Optic. Emitters are >70CR1.

LumenUs silicone lens material is heat resistant to 200°C and retains 96% optical clarity. Silicone material is flexible making it impact resistant. Each LumenUs silicone lens covers 4 emitter dies and seals each optic to meet an IP67 rating. The optical system produces standard site/area distributions and are field replaceable and rotatable in 90° increments.

DRIVER & ELECTRICAL
Driver(s) are constant current electronic with a minimum operating temperature of -40°F/-40°C. Driver(s) is/are UL and cUL recognized and have a power factor of >.90.

Drivers accept an input voltage of 120-277V, 50/60Hz or 347V-480V, 50/60Hz. (0 - 10V dimming is standard). A separate 20KV surge suppressor is installed on the incoming power side of the driver assembly.

COLOR & FINISH
Super TGIC thermoset polyester powder coat paint, 2.5 mil minimum thickness, is applied over a 5-step pretreatment cleaning and sealing process. Super TGIC powder coat paint is cured at a minimum of 400°F for 30 minutes. Standard colors are Dark Bronze, Black, Green, Gray - ANSI 70, and White.



DESCRIPTION
The WH base is ideal for courtyards, pathways, municipal, and commercial decorative light pole applications.

FEATURES
Welds to 4" or 5" O.D. smooth or fluted round aluminum shafts.
One piece corrosion resistant cast aluminum construction with minimum wall thickness of .250"
Hand hole fabricated into base.
Stainless steel hardware.
TGIC thermoset polyester powder coat finish is electrostatically applied at a 3.0 mil nominal thickness. A five stage metal pre-treatment process and anodic provide maximum corrosion resistance. The powder top coat is baked in excess of 400 degrees for supreme endurance.

ORDERING INFORMATION

AVPL -	BASE	SHAFT	HEIGHT	SHAFT WALL	MOUNTING	FINISH	ACCESSORIES
	WH	4S Ø4" SMOOTH	10'	.125"	PT23 Ø2.375" TENON	DARK BRONZE	GFI with IN-USE COVER
		4F Ø4" FLUTED	12'	.188"	PT27 Ø2.875" TENON	BLACK	BEB BANNER EYE BOLT
		5S Ø5" SMOOTH	14'		POLE DRILLING	WHITE	CPFN THREADS/COLLARING
		5F Ø5" FLUTED	16'			GREY	BA BANNER ARMS
			18'			GREEN	BH BASKET HOLDERS
							FH FLAG HOLDERS

CONTACT FACTORY FOR HEIGHT OPTIONS CONTACT FACTORY FOR DRILLING OPTIONS ALL RAL COLORS AVAILABLE CONTACT FACTORY FOR DETAILS

FFLED18N

RAB



Rectangular shaped LED floodlight designed to replace 70W Metal Halide, patent-pending "Air-Flow" technology ensures long LED and driver lifespan. Use for building façades lighting, sign lighting, LED landscape lighting and in-street security lighting.
Color: Bronze Weight: 3.9 lbs

Project: _____ Type: _____
Prepared By: _____ Date: _____

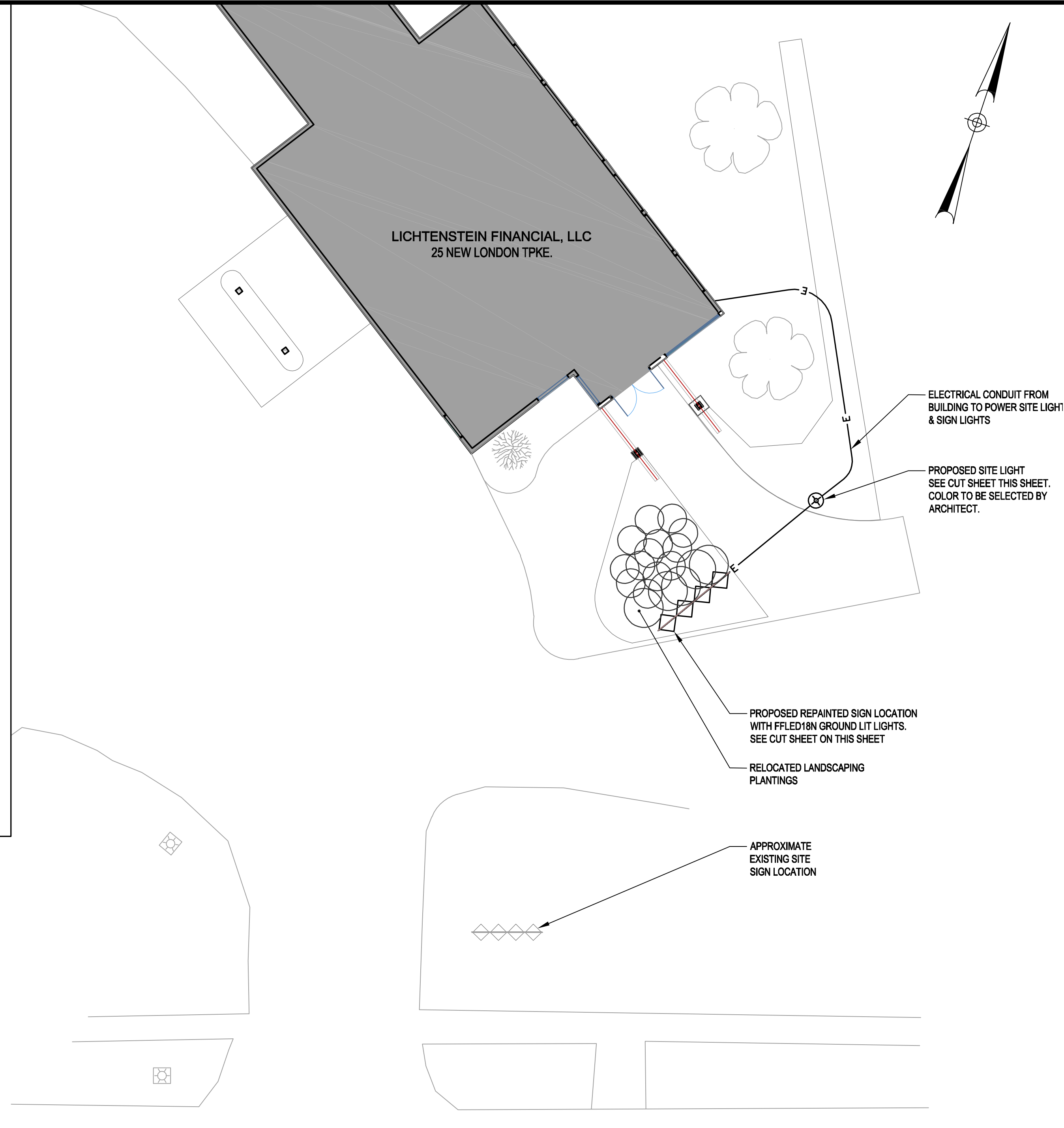
Driver Info		LED Info	
Type	Constant Current	Watts	18W
120V	0.2A	Color Temp.	4000K (Neutral)
208V	0.15A	Color Accuracy	82 CRI
240V	0.13A	L70 Lifespan	100,000 Hours
277V	0.11A	Lumens	2,416
Input Watts	19.6W	Efficacy	123.3 lm/W

Technical Specifications

Electrical
Driver: Constant Current, Class 2, 120-277V, 50-60 Hz, 120W: 0.2A, 208V: 0.15A, 240V: 0.13A, 277V: 0.11A
Dimming Driver: Driver includes dimming control wiring for 0-10V dimming systems. Requires separate 0-10V DC dimming circuit. Dims down to 10%.
THD: 12.64% at 120V, 16.41% at 277V
Power Factor: 98.7% at 120V, 91.6% at 277V
Surge Protection: 6kV

Note: All values are typical (tolerance +/- 10%)
Performance
Lifespan: 100,000-Hour LED lifespan based on IES LM-80 results and TM-21 calculations
Construction
IP Rating: Ingress protection rating of IP66 for dust and water
Airflow: Airflow technology heat sink for superior cooling
Ambient Temperature: Suitable for use in up to 40°C (104°F)

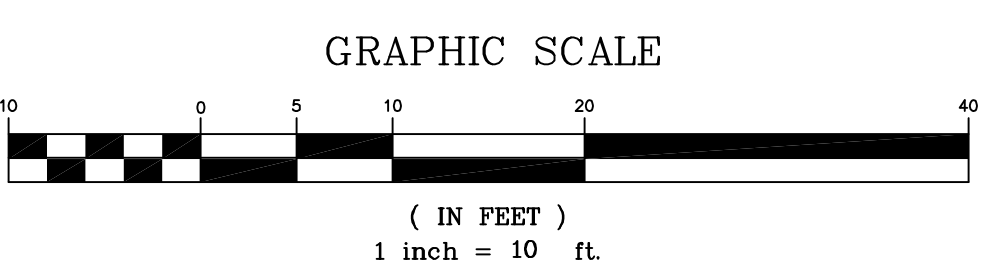
Cold Weather Starting: Minimum starting temperature is -40°C (-40°F)
Thermal Management Housing: Die-cast aluminum housing, lens frame and mounting arm
Mounting: Heavy-duty mounting arm with "O" ring seal & stainless steel screw
Reflector: Semi-specular anodized aluminum



RELOCATED SITE SIGN AND PROPOSED SITE LIGHT PLAN

SCALE: 1"=10'-0"

ZONING TABLE	
ZONE:	TOWN CENTER (TC)
BUSINESS SIGNS -	PERMITTED
USE:	SINGLE BUILDING PARCELS - SINGLE BUSINESS
EXISTING SIGN AREA =	38 SQ. FT. (SEE NOTE 1)
PERMITTED SIGN AREA =	38 SQ. FT. (SEE NOTE 2)
PROPOSED SIGN AREA =	38 SQ. FT.
PROPOSED SIGN LOCATION =	FRONT YARD
PERMITTED SIGN HEIGHT (FROM GROUND) =	10'-0"
PROPOSED SIGN HEIGHT (FROM GROUND) =	4'-2"
DIRECT ILLUMINATION -	PERMITTED
NOTES:	
1.	The existing sign is being reused and relocated to the proposed location as shown on the site plan.
2.	Maximum sign area calculation: Length of main entry wall = 38'-0", converts to 38 Sq. Ft.



GENERAL NOTES:

- VERIFY ALL UTILITY LOCATIONS - CALL BEFORE YOU DIG (8-1-1). IN THE EVENT CALL BEFORE YOU DIG IS UNABLE TO LOCATE THE UTILITIES IT SHALL BE THE CONTRACTORS RESPONSIBILITY TO HIRE A PRIVATE UTILITY LOCATING COMPANY AT NO COST TO THE OWNER.
- THE EXISTING CONDITIONS SHOWN ON THESE DRAWINGS ARE SCHEMATIC IN NATURE AND DERIVED FROM FIELD MEASUREMENTS AND SUPERIMPOSING OF THE TOWN'S GIS WEB SITE. ANY DISCREPANCY BETWEEN THESE PLANS AND ACTUAL FIELD CONDITIONS SHALL BE BROUGHT TO THE ATTENTION OF THE ENGINEER.



NORTHEAST COLLABORATIVE ARCHITECTS
500 Plaza
Middletown, CT 06457
v: 860.344.9332

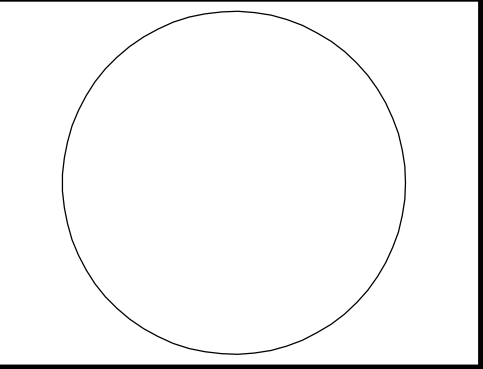
Civil Engineer:
Macchi Engineers, LLC
44 Gillett Street,
Hartford, CT 06105
Phone: (860) 549-6190
www.macchiengineers.com



44 Gillett Street
Hartford, Connecticut
06105
(860) 549-6190
www.macchiengineers.com

LICHTENSTEIN FINANCIAL, LLC
FRONT ENTRY RENOVATION PROJECT
25 NEW LONDON TPKE.
GLASTONBURY, CT 06033

REVISIONS:



Site Signage & Lighting Plan

DATE: 02-14-22

NCA JOB NO.: XXXX

DRAWING NO.:

C-1.0