

You Are Invited To A
PUBLIC INFORMATION MEETING

MAIN STREET PAVEMENT REHABILITATION
and
BICYCLE/PEDESTRIAN IMPROVEMENTS –
GATEWAY AREA

TO BE HELD

Tuesday, January 11, 2022

at 8:00 P.M.

Through Zoom Video Conferencing

The Town is awarded grants per the LOTCIP Grant Program for the Main Street (School Street to New London Turnpike/Naubuc Avenue) pavement rehabilitation project (\$2M±) and construction of new sidewalks (Eastern and Western Boulevard, National Drive) within the Gateway area (\$1M±).

The Glastonbury Town Council has scheduled a public information hearing on Tuesday, January 11, 2022 at 8:00 p.m. to be held through Zoom Video Conferencing to hear public comment in this matter. This public information hearing is required by the LOTCIP Grant Program.

Plans are posted to the website and can be found at www.glastonburyct.gov/legalnotice. Please note plans are preliminary and are not detailed to include phasing, schedules, hours of operation, detours, etc., which will be determined as design and bidding proceeds. This information will be the subject of future communications and meetings with property and business owners.

You can access the public information hearing at the link below:

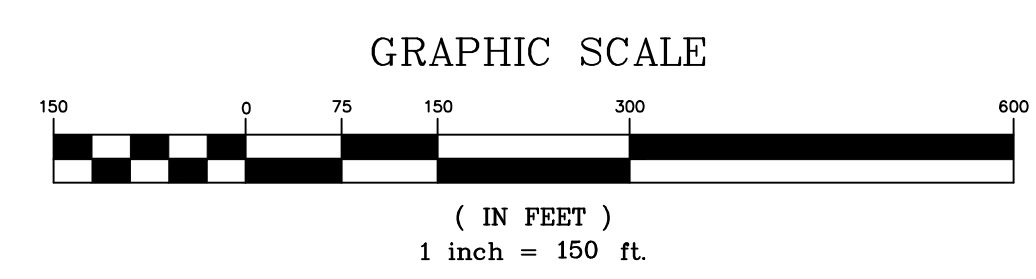
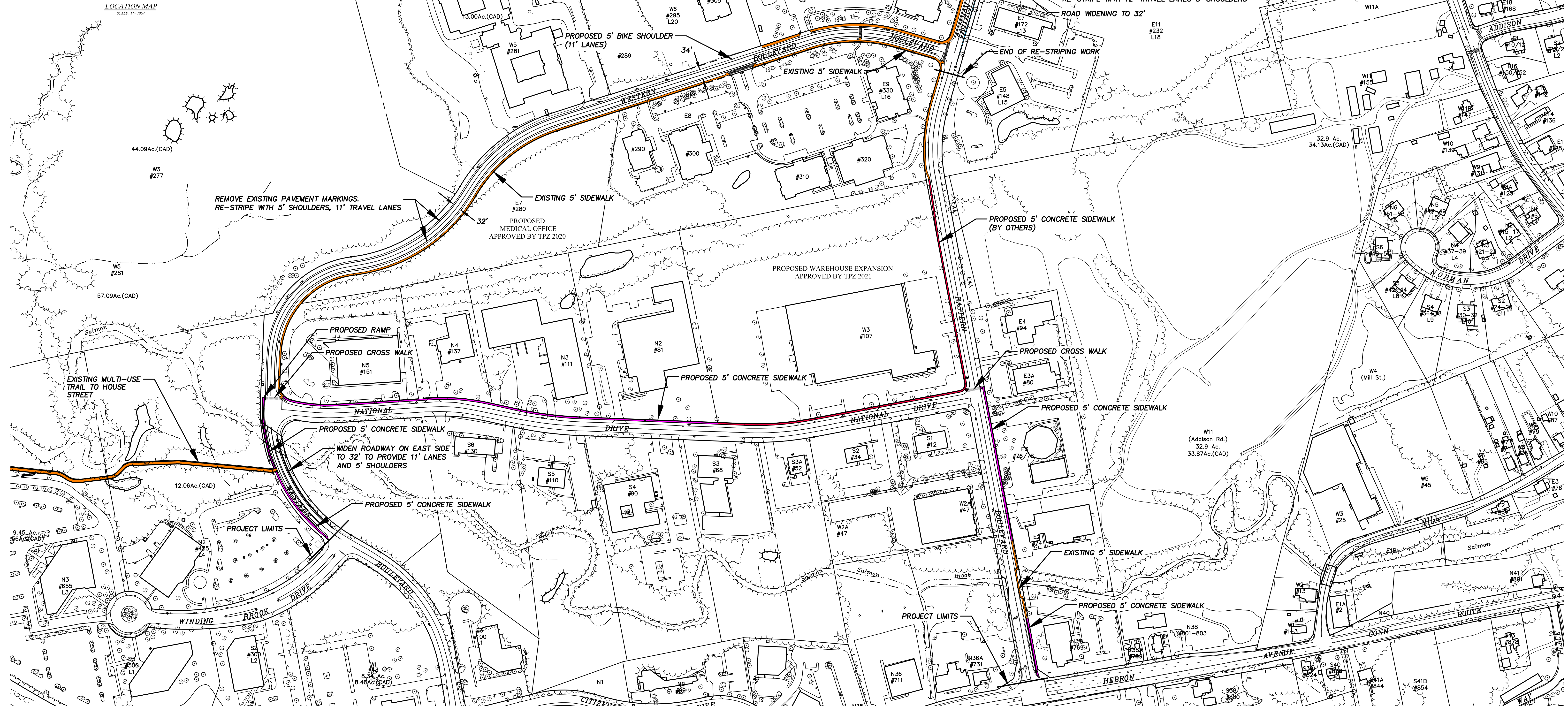
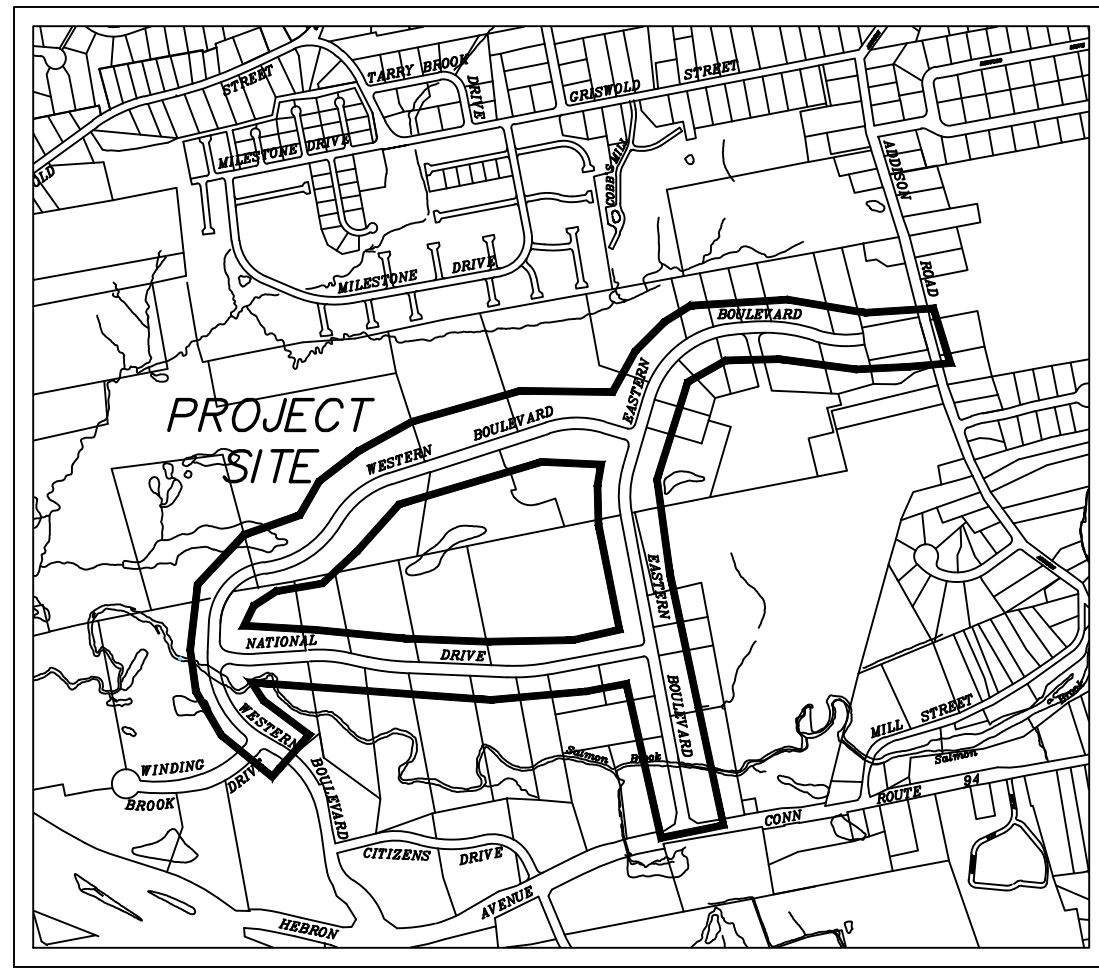
Join Zoom Meeting:

<https://us06web.zoom.us/j/84901067812?pwd=emZocGc4eFV6cWovYzZvU2FQc2ZrZz09>

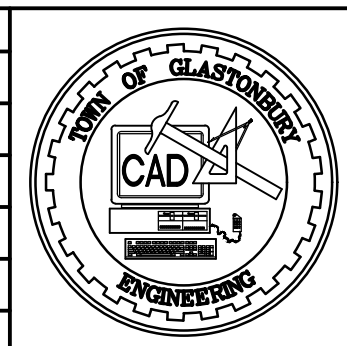
Join by Phone: +1 646 558 8656

Webinar ID: 849 0106 7812 Passcode: 022650

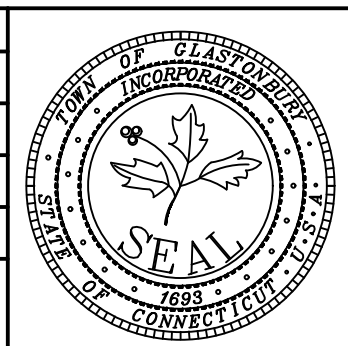
FILE: H:\DWG\Streets\Western Blvd\FW-1703 Smith School to Western Blvd Lane Gateway Corporate Park Bicycle and Pedestrian Improvements.dwg USER: Steven Troy DATE: 10/28/2021



DRAWING ISSUE STATUS		
NO.	DESCRIPTION	DATE
1.		



SCALE: AS SHOWN DATE: 3-16-2020
 DRAWN BY: S.Troy
 CHECKED BY: S.M.B.
 APPROVED BY: D.A.P.
 ST. FILE:
MANUAL REVISIONS TO THIS DOCUMENT ARE PROHIBITED. ALL REVISIONS MUST BE PERFORMED ON CAD FILE. SHOW UP THE LEFT MARGIN OF THE DRAWING. DISCREPANCY BETWEEN THE DRAWING AND THE CAD FILE SHALL BE THE CAD FILE. GLASTONBURY, CONNECTICUT. ENGINEERING OFFICE AT (860) 652-7725.



**CONCEPT PLAN
 PROPOSED BICYCLE AND
 PEDESTRIAN IMPROVEMENTS
 FOR
 GATEWAY CORPORATE PARK
 GLASTONBURY, CONNECTICUT**