

You Are Invited To A
PUBLIC INFORMATION MEETING

MAIN STREET PAVEMENT REHABILITATION
and
BICYCLE/PEDESTRIAN IMPROVEMENTS –
GATEWAY AREA

TO BE HELD

Tuesday, January 11, 2022

at 8:00 P.M.

Through Zoom Video Conferencing

The Town is awarded grants per the LOTCIP Grant Program for the Main Street (School Street to New London Turnpike/Naubuc Avenue) pavement rehabilitation project (\$2M±) and construction of new sidewalks (Eastern and Western Boulevard, National Drive) within the Gateway area (\$1M±).

The Glastonbury Town Council has scheduled a public information hearing on Tuesday, January 11, 2022 at 8:00 p.m. to be held through Zoom Video Conferencing to hear public comment in this matter. This public information hearing is required by the LOTCIP Grant Program.

Plans are posted to the website and can be found at www.glastonburyct.gov/legalnotice. Please note plans are preliminary and are not detailed to include phasing, schedules, hours of operation, detours, etc., which will be determined as design and bidding proceeds. This information will be the subject of future communications and meetings with property and business owners.

You can access the public information hearing at the link below:

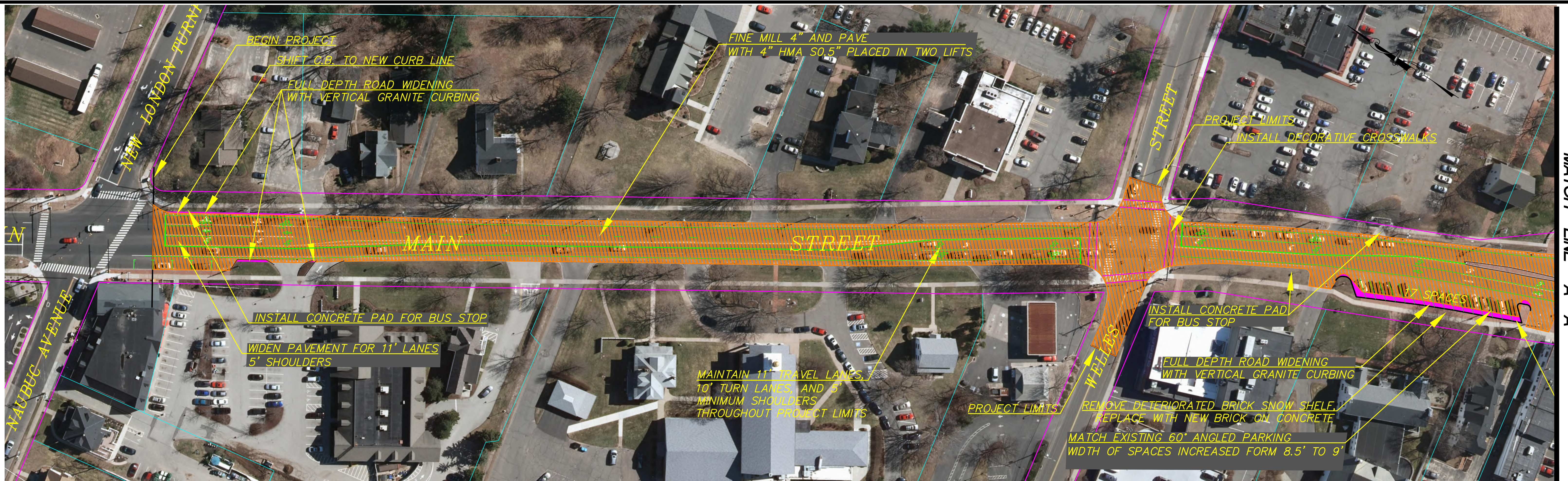
Join Zoom Meeting:

<https://us06web.zoom.us/j/84901067812?pwd=emZocGc4eFV6cWovYzZvU2FQc2ZrZz09>

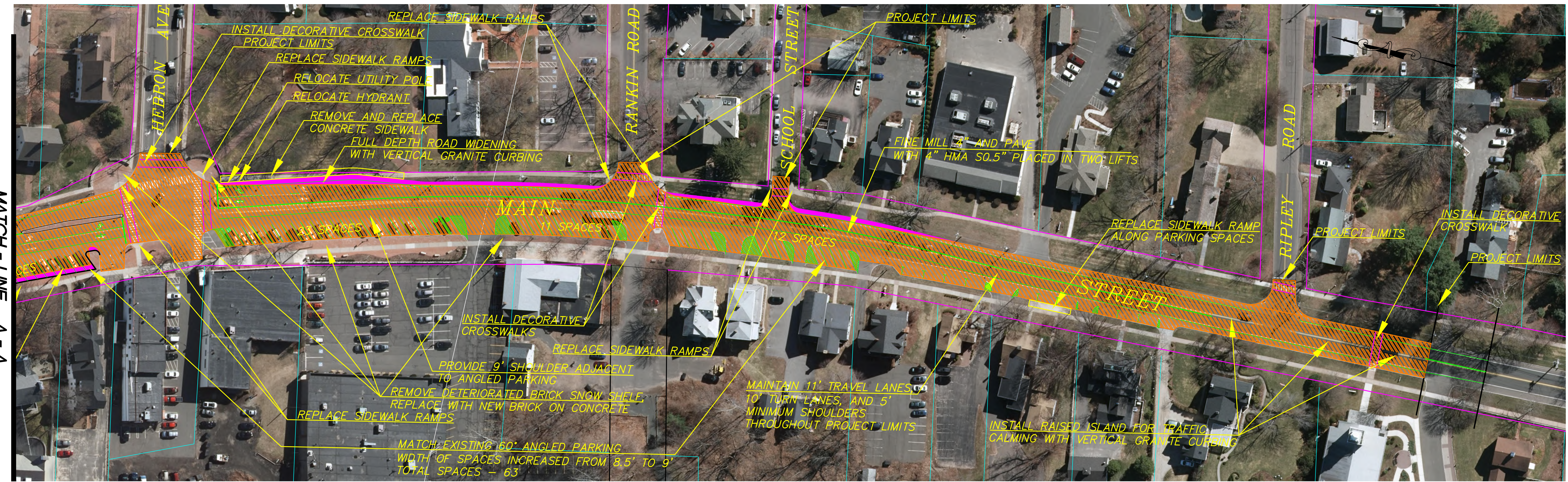
Join by Phone: +1 646 558 8656

Webinar ID: 849 0106 7812 Passcode: 022650

FILE: H:\DWG\Streets\Main St\PW-2003 MAIN STREET TRAFFIC CALMING 02-20-2020\1W-2004 Main St Pavement Rehab.dwg USER: Steven Troy DATE: 12/17/2021

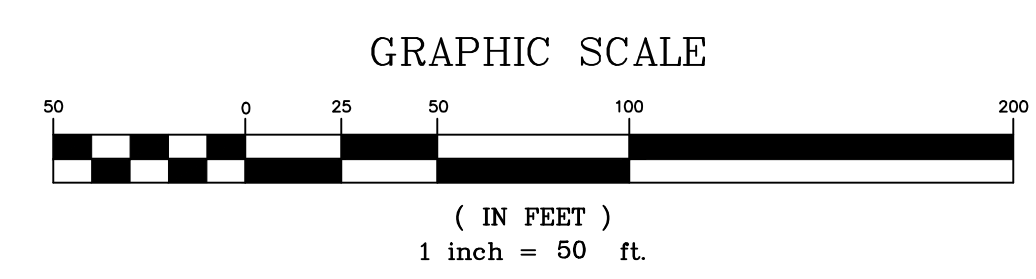


MATCH - LINE A - A

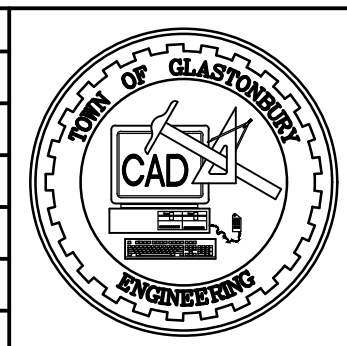


MATCH - LINE A - A

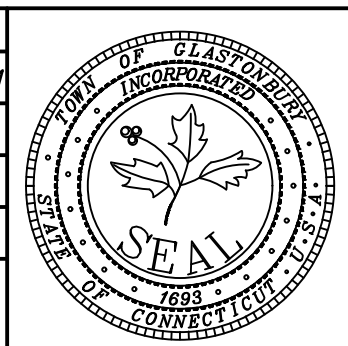
NOTE: REPLACE ALL CATCH BASIN TOPS WITHIN PROJECT LIMITS



DRAWING ISSUE STATUS		
NO.	DESCRIPTION	DATE
1.	-----	-----



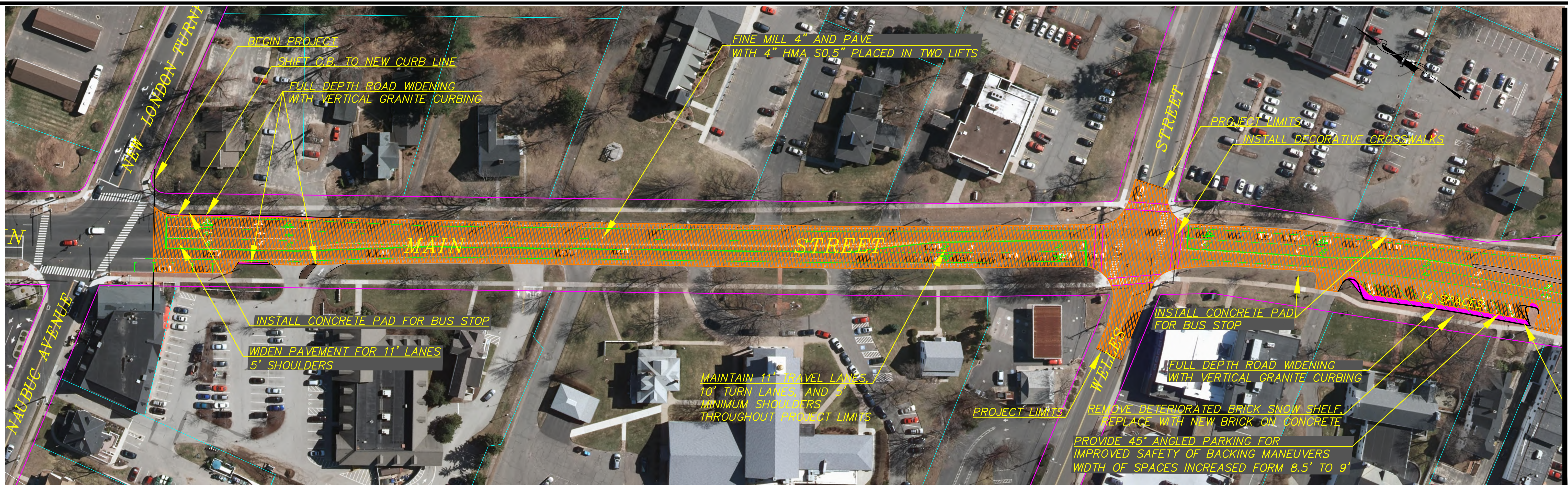
SCALE: AS SHOWN	DATE: 12-15-2021
DRAWN BY: S.Troy	CHECKED BY: S.M.B.
APPROVED BY: D.A.P.	ST. FILE: -----



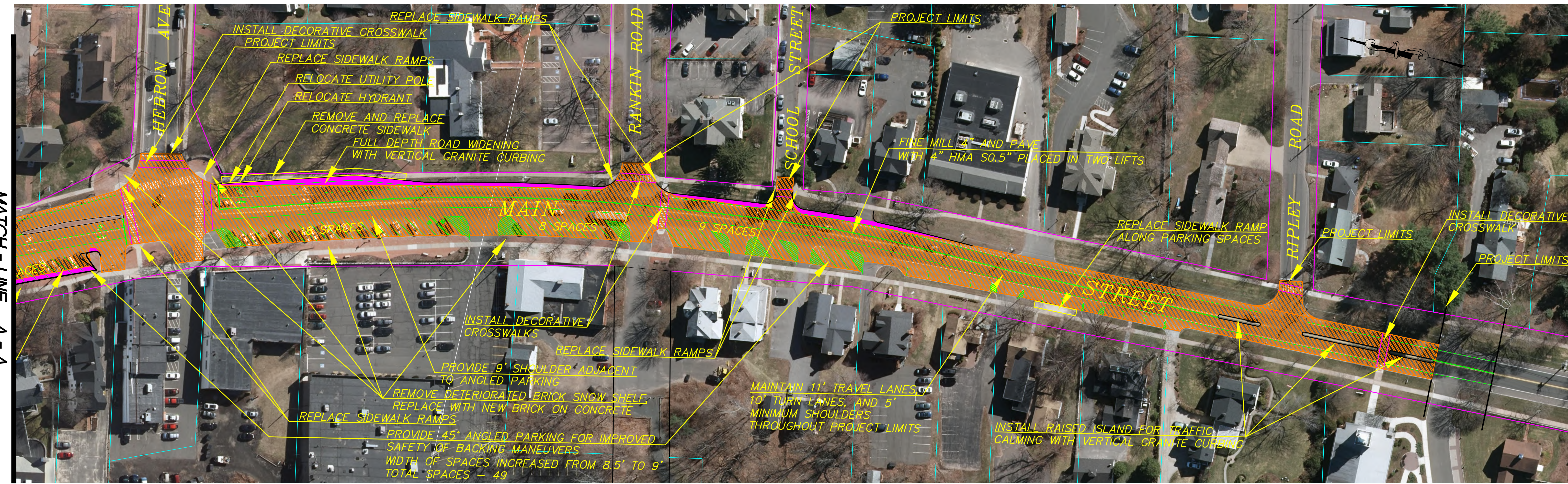
PLAN DEPICTING
 MAIN STREET PAVEMENT REHABILITATION
 RIPLEY ROAD TO NEW LONDON TURNPIKE
 OPTION 1
 60° ANGLED PARKING
 GLASTONBURY, CONNECTICUT

SHEET NO.
1
 OF 4

FILE: H:\DWG\Streets\Main St\PW-2003 MAIN STREET TRAFFIC CALMING 02-20-2020\14-2004 Main St Pavement Rehab.dwg USER: Steven Troy DATE: 12/7/2021

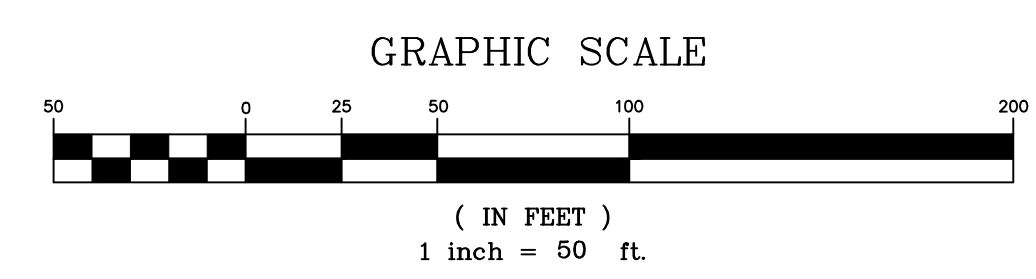


MATCH - LINE A - A

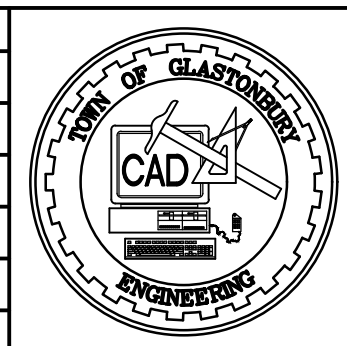


MATCH - LINE A - A

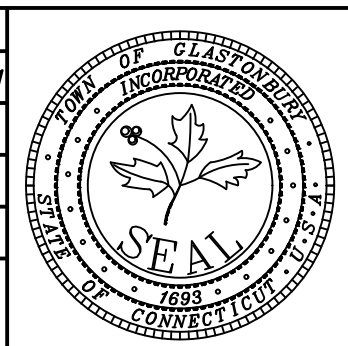
NOTE: REPLACE ALL CATCH BASIN TOPS WITHIN PROJECT LIMITS



DRAWING ISSUE STATUS		
NO.	DESCRIPTION	DATE
1.	-----	-----

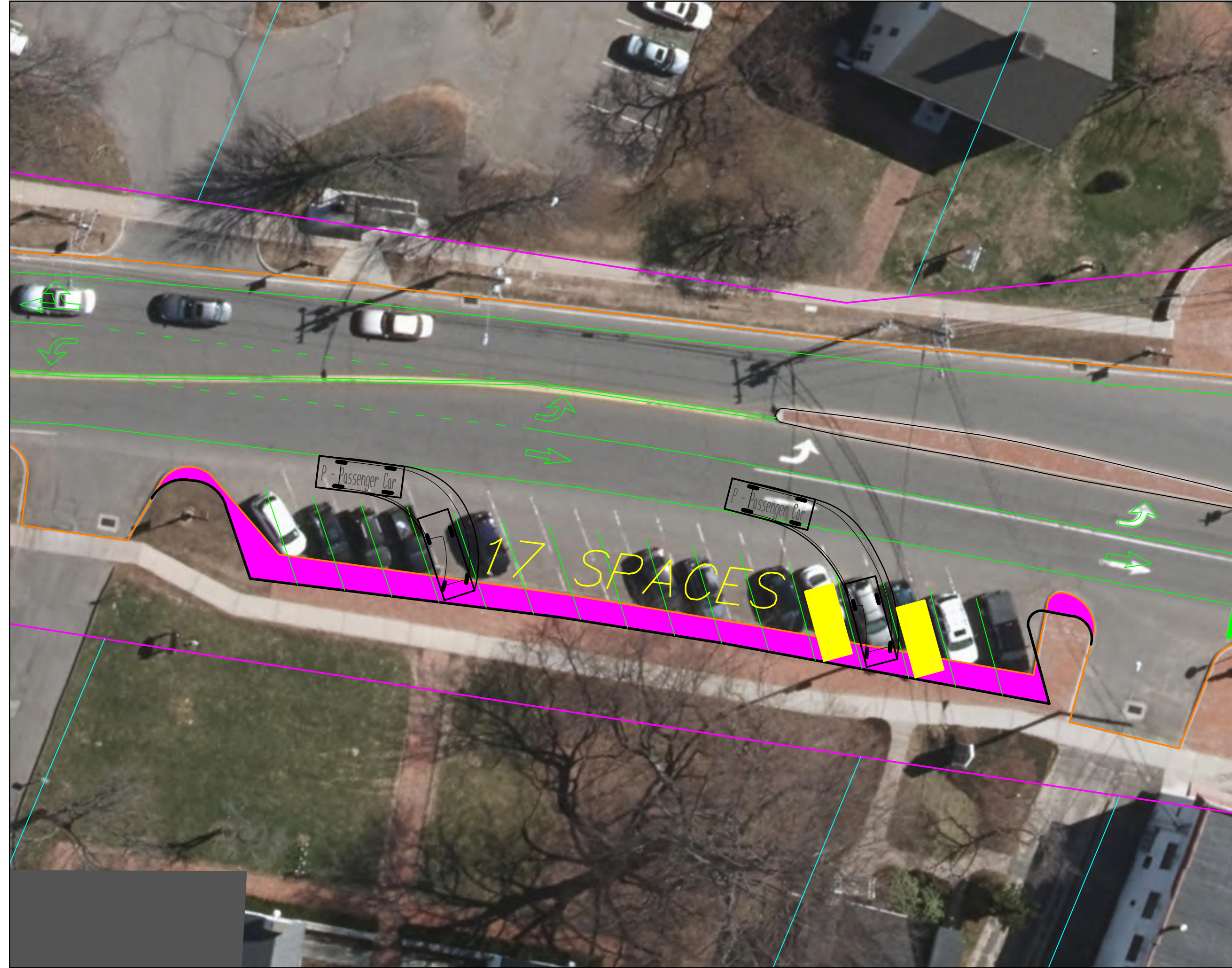


SCALE: AS SHOWN	DATE: 12-15-2021
DRAWN BY: S.Troy	CHECKED BY: S.M.B.
APPROVED BY: D.A.P.	ST. FILE: -----

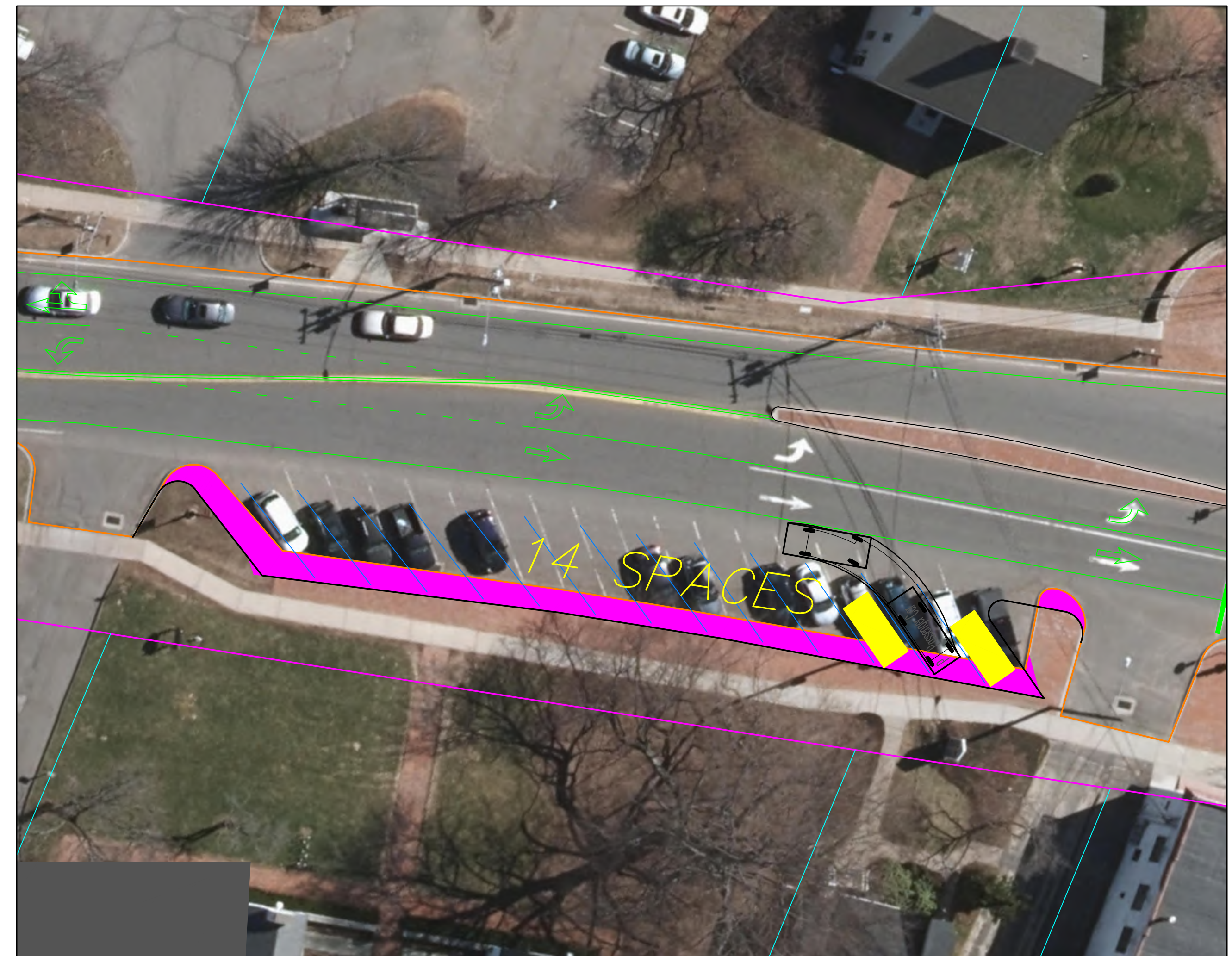


PLAN DEPICTING
 MAIN STREET PAVEMENT REHABILITATION
 RIPLEY ROAD TO NEW LONDON TURNPIKE
 OPTION 2
 45° ANGLED PARKING
 GLASTONBURY, CONNECTICUT

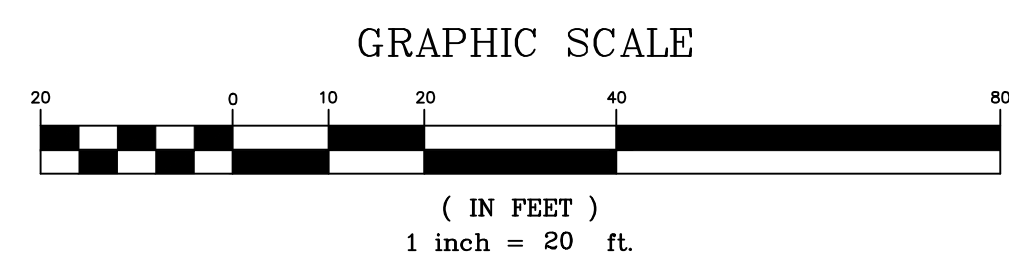
SHEET NO.
2
 OF 4



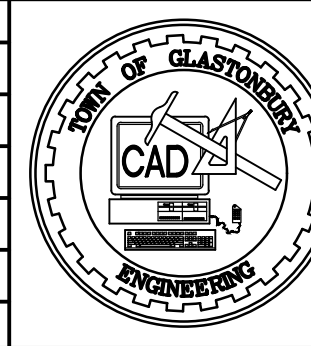
DETAIL DEPICTING
60° ANGLED PARKING
BACKING MANEUVER FOR PASSENGER CAR
1"=20'



DETAIL DEPICTING
45° ANGLED PARKING
BACKING MANEUVER FOR PASSENGER CAR
1"=20'

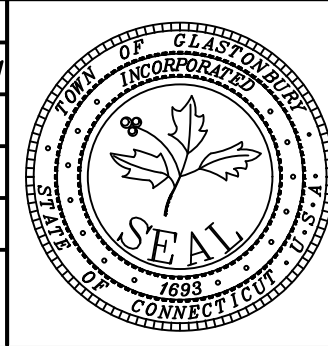


DRAWING ISSUE STATUS		
NO.	DESCRIPTION	DATE
1.	-----	----

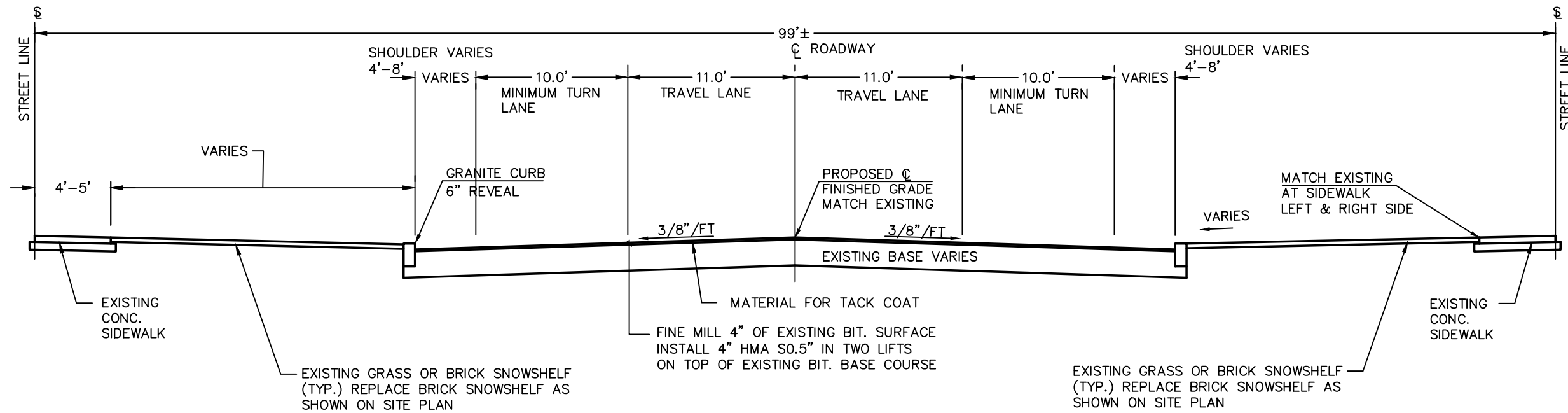


SCALE: AS SHOWN	DATE:
DRAWN BY: S.Troy	12-15-2021
CHECKED BY: S.M.B.	----
APPROVED BY: D.A.P.	----
ST. FILE:	

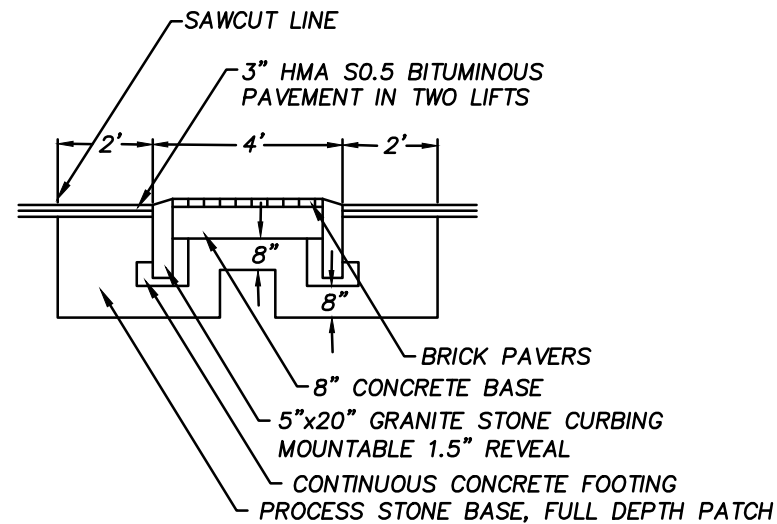
DO NOT SCALE THIS DRAWING. USE THE DIMENSIONS GIVEN. IF THERE ARE ANY DISCREPANCIES OR QUESTIONS, CONTACT THE TOWN OF GLASTONBURY, ENGINEERING OFFICE.



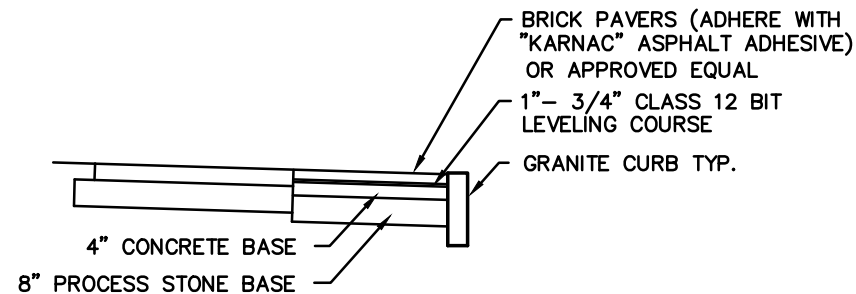
PLAN DEPICTING
VEHICULAR PARKING
FOR
MAIN STREET
GLASTONBURY, CONNECTICUT



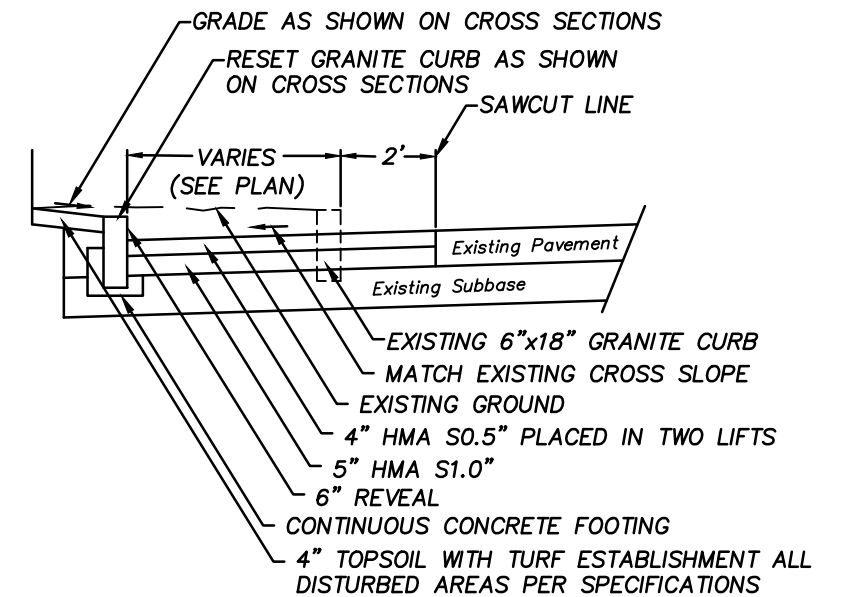
FINE MILLING 4" OVERLAY TYPICAL CROSS SECTION



RAISED ISLAND WITH MOUNTABLE CURB
(NOT TO SCALE)

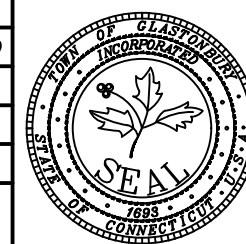


(FOR NEW BRICK AREAS ONLY)
BRICK SIDEWALK ON CONCRETE BASE DETAIL
NOT TO SCALE



FULL DEPTH WIDENING TYPICAL CROSS SECTION
(NOT TO SCALE)

DRAWING ISSUE STATUS		SCALE: AS SHOWN	DATE:
		DRAWN BY: S.Troy	3-6-2020
		CHECKED BY: S.M.B.	----
		APPROVED BY: D.A.P.	----
		ST. FILE:	
1.	----	----	----
NO.	DESCRIPTION	DATE	DO NOT SCALE THIS DRAWING. USE THE DIMENSIONS GIVEN. IF THERE ARE ANY DISCREPANCIES OR QUESTIONS, CONTACT THE TOWN OF GLASTONBURY, ENGINEERING OFFICE.



TYPICAL CROSS SECTION
PAVEMENT REHABILITATION
FOR
MAIN STREET
GLASTONBURY, CONNECTICUT

SHEET NO.

4

OF 4