

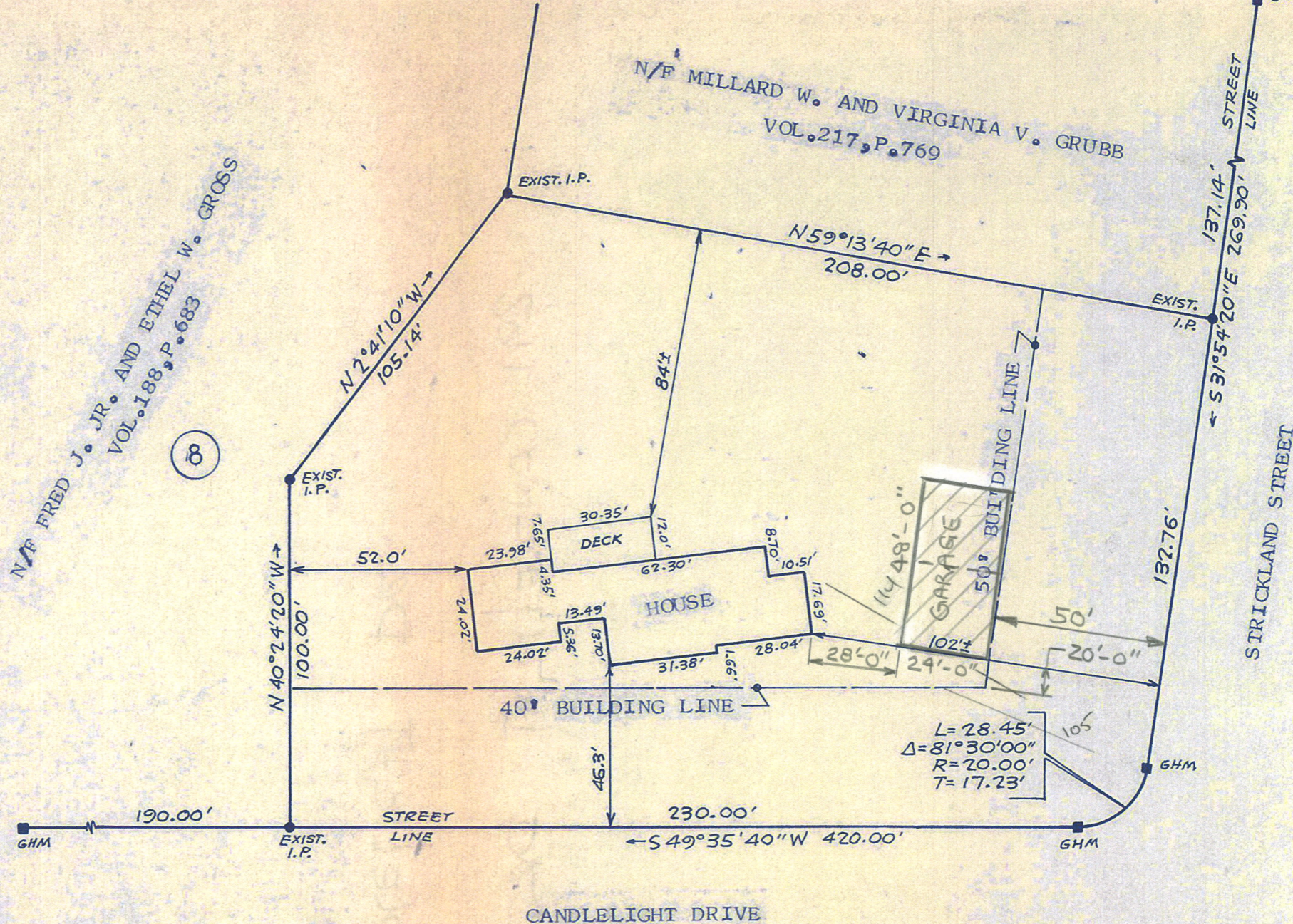
REFERENCE IS MADE TO FOLLOWING MAPS:
 PROPERTY OF JOHN J. MOZZOCHI, GLASTONBURY, CONN.,
 SHEET 1 OF 2, SCALE 1"=100', DATED 6-24-61, BY
 JOHN J. MOZZOCHI & ASSOCIATES, C.E.'S, AND
 "CANDLEWOOD HILL" SECTION 4 SUBDIVISION MAP
 PREPARED FOR ELM CONSTRUCTION CO., INC., GLASTON-
 BURY, CONN., SHEET 2 OF 4, SCALE 1"=40', DATED
 5-8-68 BY JOHN J. MOZZOCHI & ASSOCIATES, C.E.'S.

HOUSE IS AS SHOWN.

NO ZONING VIOLATIONS.
 CERTIFIED TO BE SUBSTANTIALLY CORRECT.

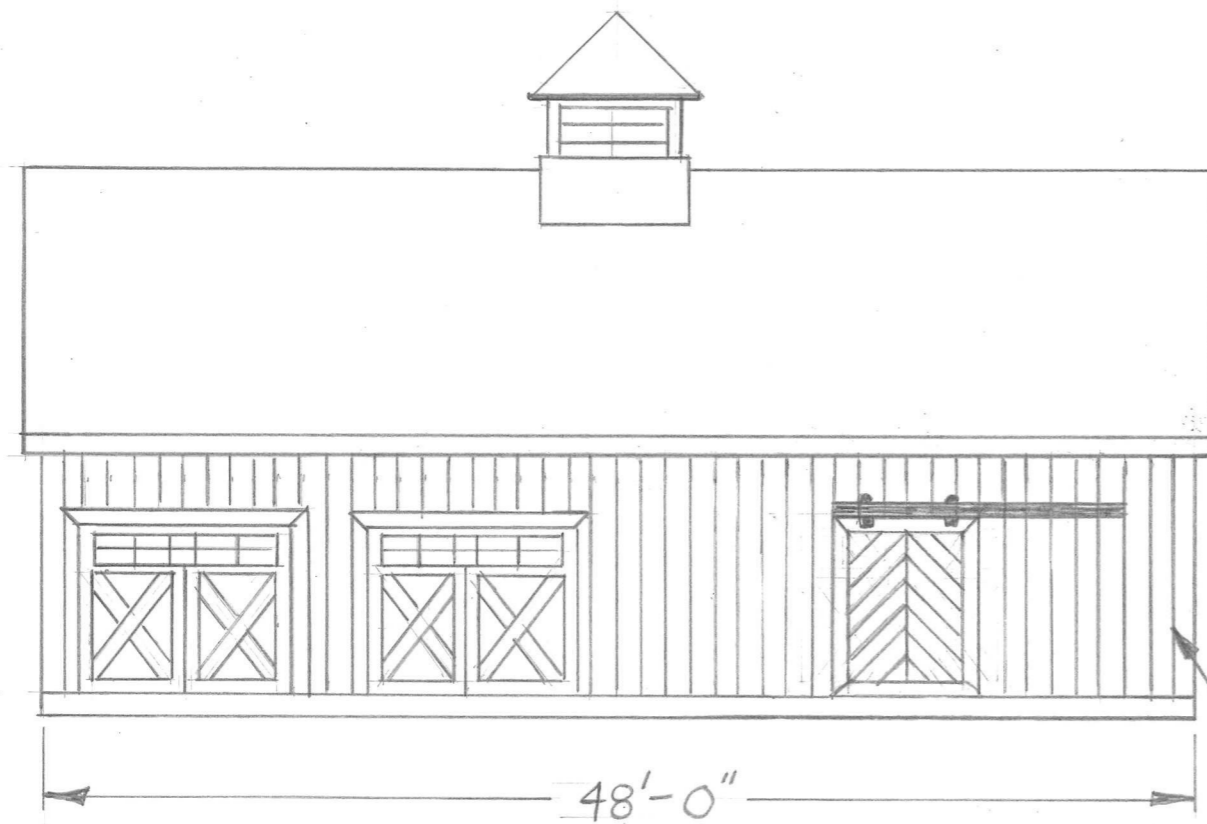
I hereby certify that this map and survey were prepared in accordance
 with the standards of a Class A-2 Survey as defined in the Code of Practice
 for Standards of Accuracy of Surveys and Maps, adopted December 10, 1975
 as amended by the Connecticut Association of Land Surveyors, Inc.

John Luchs Jr.

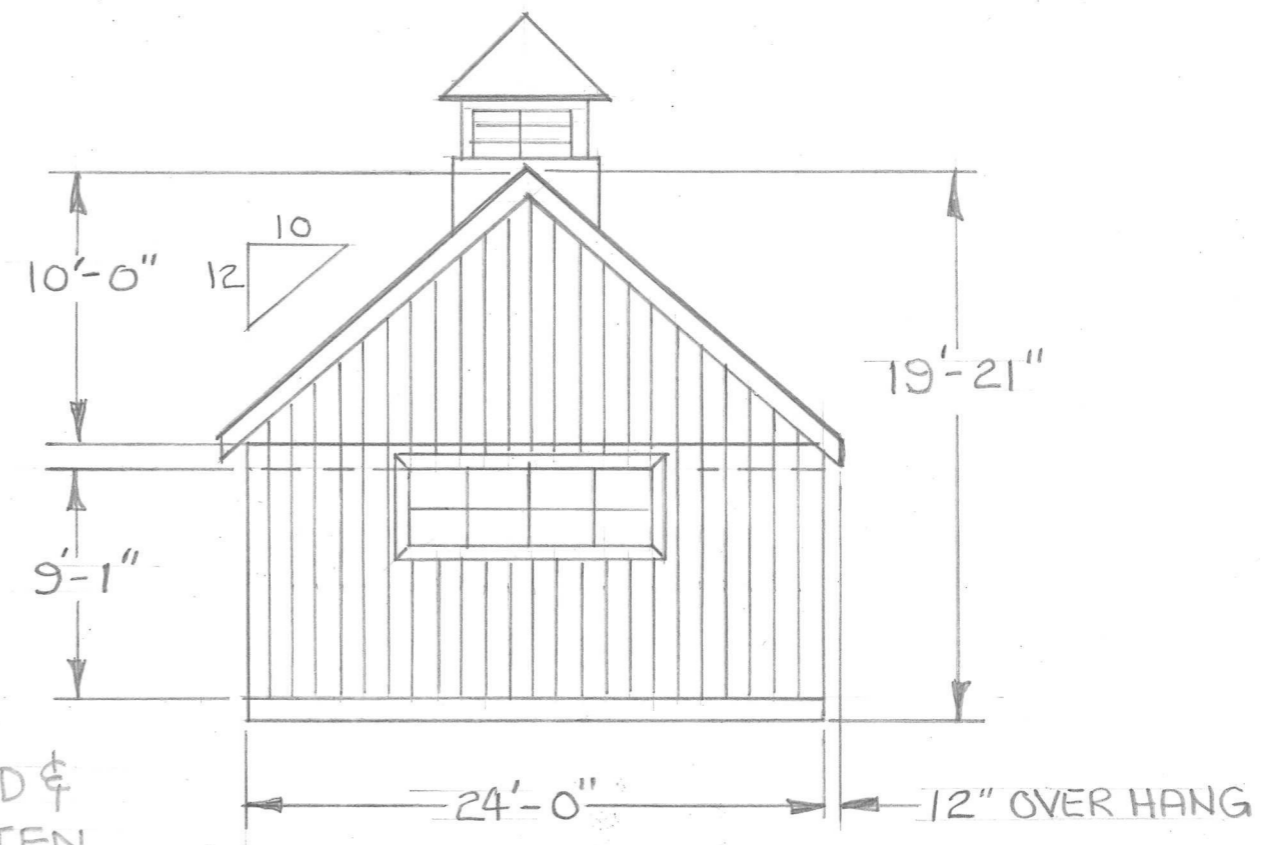


PLOT PLAN
 PREPARED FOR
 REV. JERVIS S. ZIMMERMAN
 GLASTONBURY, CT.

LUCHS & BECKERMAN CIVIL ENGINEERS - PLANNERS - LAND SURVEYORS GLASTONBURY, CONN.
B-83-68-HC

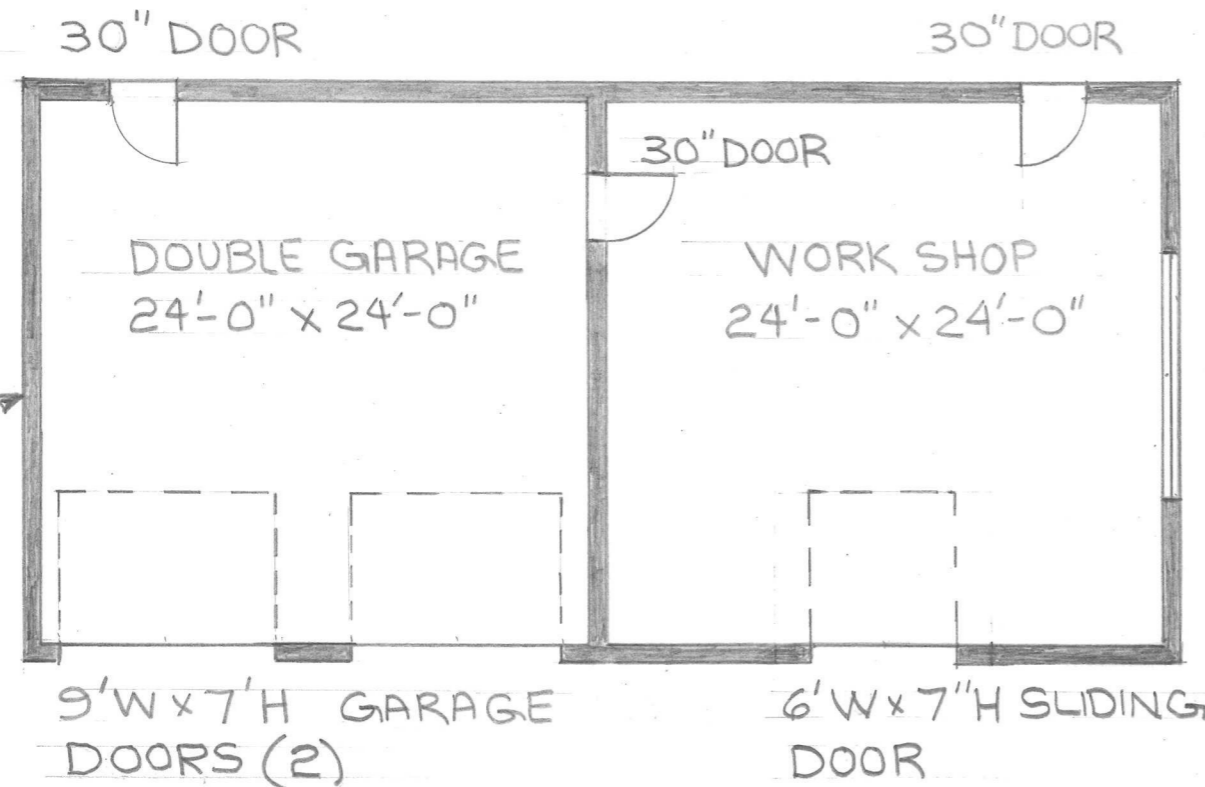


NORTH ELEVATION
SCALE 1/8" = 1'-0"



WEST ELEVATION

BOARD & BATTEN



FLOOR PLAN
SCALE 1/8" = 1'-0"

10'x5" WINDOW

OVERALL SQ. FT. = 1,152
ACCESSORY SQ. FT. = 576
FARLEY HOUSE SQ. FT. = 2,357

FARLEY GARAGE PLAN
10-22-2021