

MEMORANDUM

To: Rebecca Augur, Director of Planning and Land Use Services

From: Richard J. Johnson, Town Manager

Date: October 27, 2021

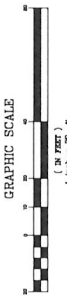
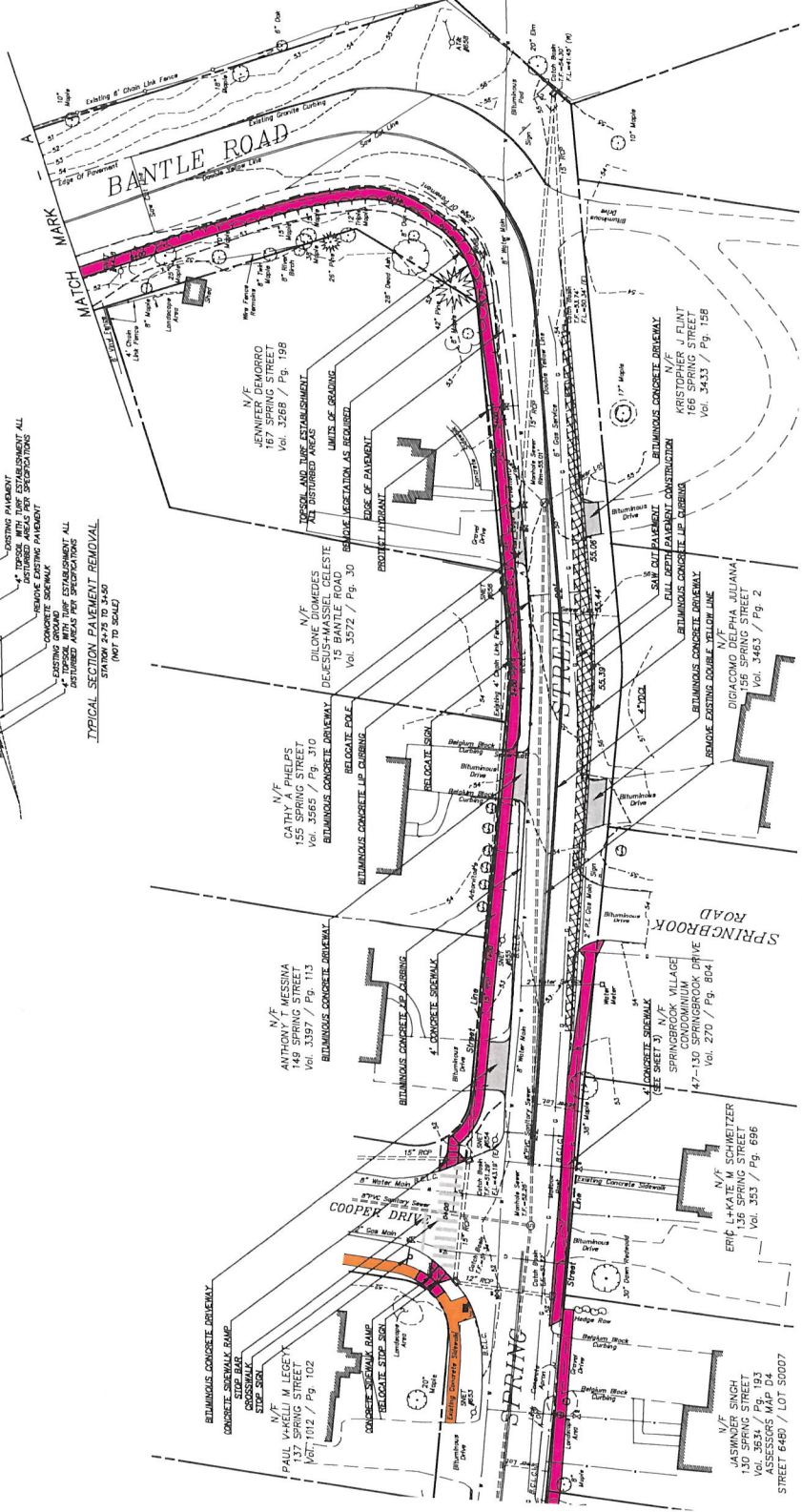
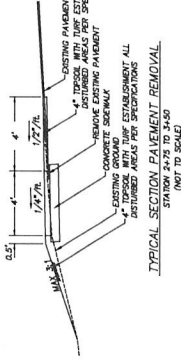
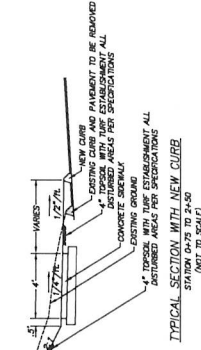
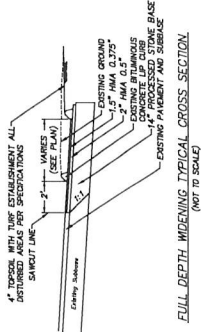
Re: Proposed Construction of New Sidewalks

As we discussed, the Town Plan and Zoning Commission is asked to consider proposed construction of new sidewalks per CGS Section 8-24. The four projects are summarized below and shown on the attached pages:

- Bantle Road – Griswold Street to Spring Street
- Spring Street – Spring Brook Drive to Willow Brook Road
- House Street – connect sections leading to Salmon Brook Drive connecting to the multi-use trail head
- Main Street/Route 17 – Overlook Road to Route 17/Main/Buttonball)

Please schedule this matter for the Commission meeting of Tuesday, November 16, 2021 and advise.

RJJ/sal

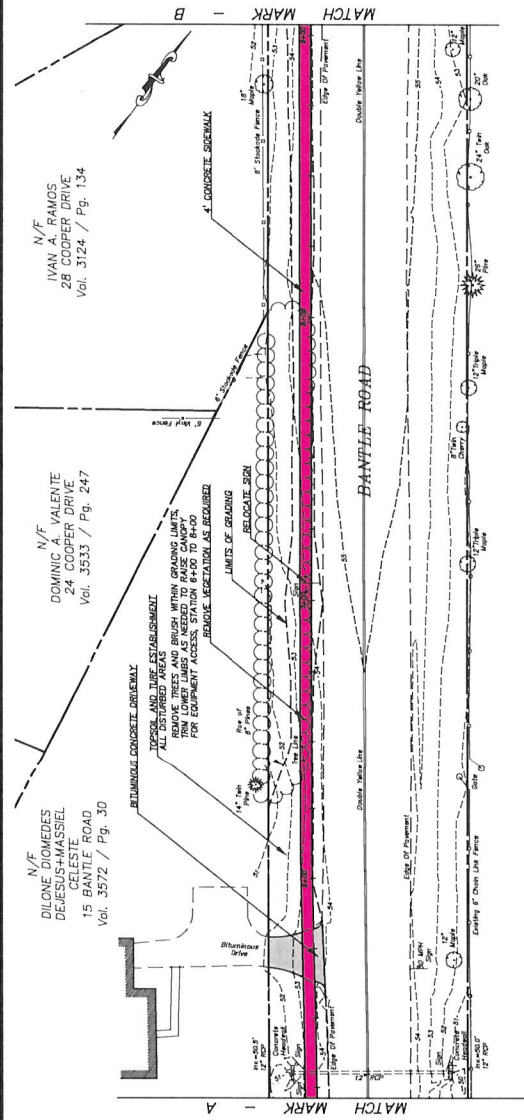


SCALE AS SHOWN	DATE
DRAWN BY: S. Troy	
CHECKED BY: S.M.B.	
APPROVED BY: D.A.C.	
ST. FILE:	

DRAWING ISSUE STATUS	DATE

PLANS DEPICTING
PROPOSED SIDEWALKS
FROM
SPRING STREET TO BANTLE ROAD
GLASTONBURY, CONNECTICUT

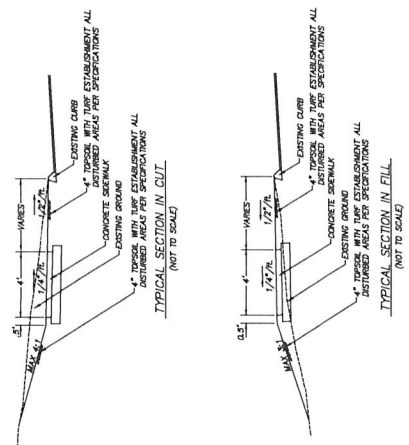
Certified to be substantially correct
DANIEL A. PENNINGTON P.E. Reg. No. 20101



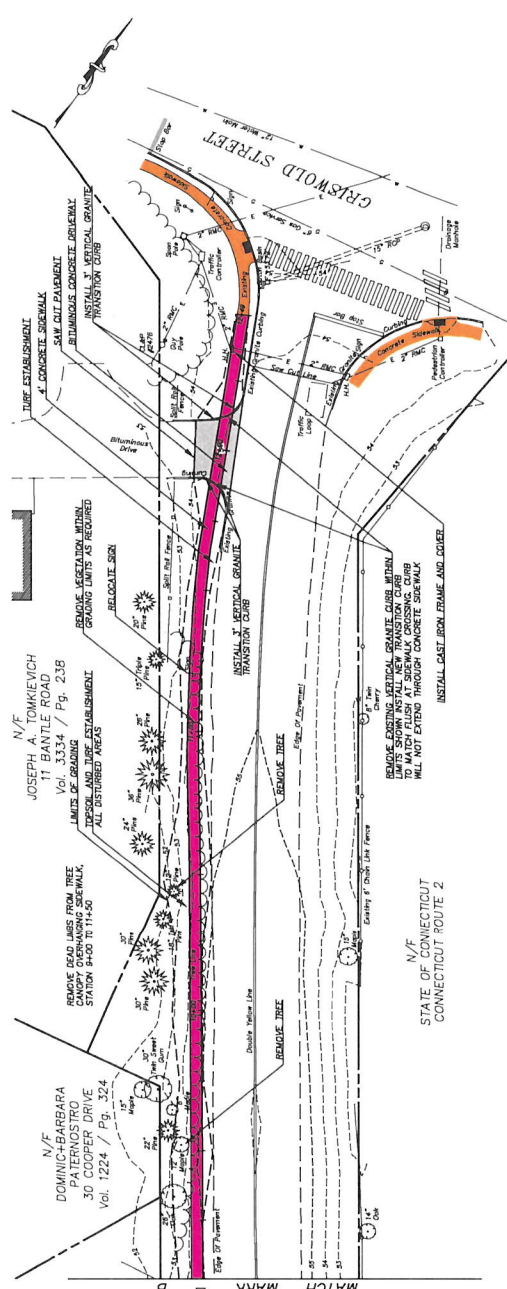
N/F
IVAN A. RAMOS
28 COOPER DRIVE
Vol. 3124 / Pg. 134

N/F
DOMINIC A. VALENTE
24 COOPER DRIVE
Vol. 3533 / Pg. 247

N/F
DILONE COIMEDS
DESSUS-MASSIEL
CELESTE
15 BANTLE ROAD
Vol. 3572 / Pg. 30



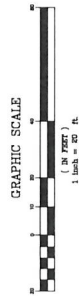
N/F
STATE OF CONNECTICUT
CONNECTICUT ROUTE 2



N/F
JOSEPH A. TOMKEVICH
11 BANTLE ROAD
Vol. 3334 / Pg. 238

N/F
DOMINIC-BARBARA
PATERNOSTRO
30 COOPER DRIVE
Vol. 1224 / Pg. 324

N/F
STATE OF CONNECTICUT
CONNECTICUT ROUTE 2



PLANS DEPICTING
PROPOSED SIDEWALKS
FROM
SPRING STREET TO BANTLE ROAD
GLASTONBURY, CONNECTICUT

5 OF 11

NO.	DESCRIPTION	DATE
1.		

DATE: _____

SCALE: AS SHOWN

DRAWN BY: S. Troy

CHECKED BY: S.M.R.

APPROVED BY: D.A.P.

DATE: _____

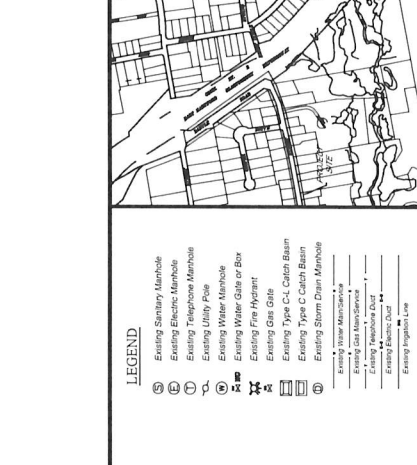
Certified to be substantially correct

DANIEL A. RENNINGTON P.E. Reg. No. 20107

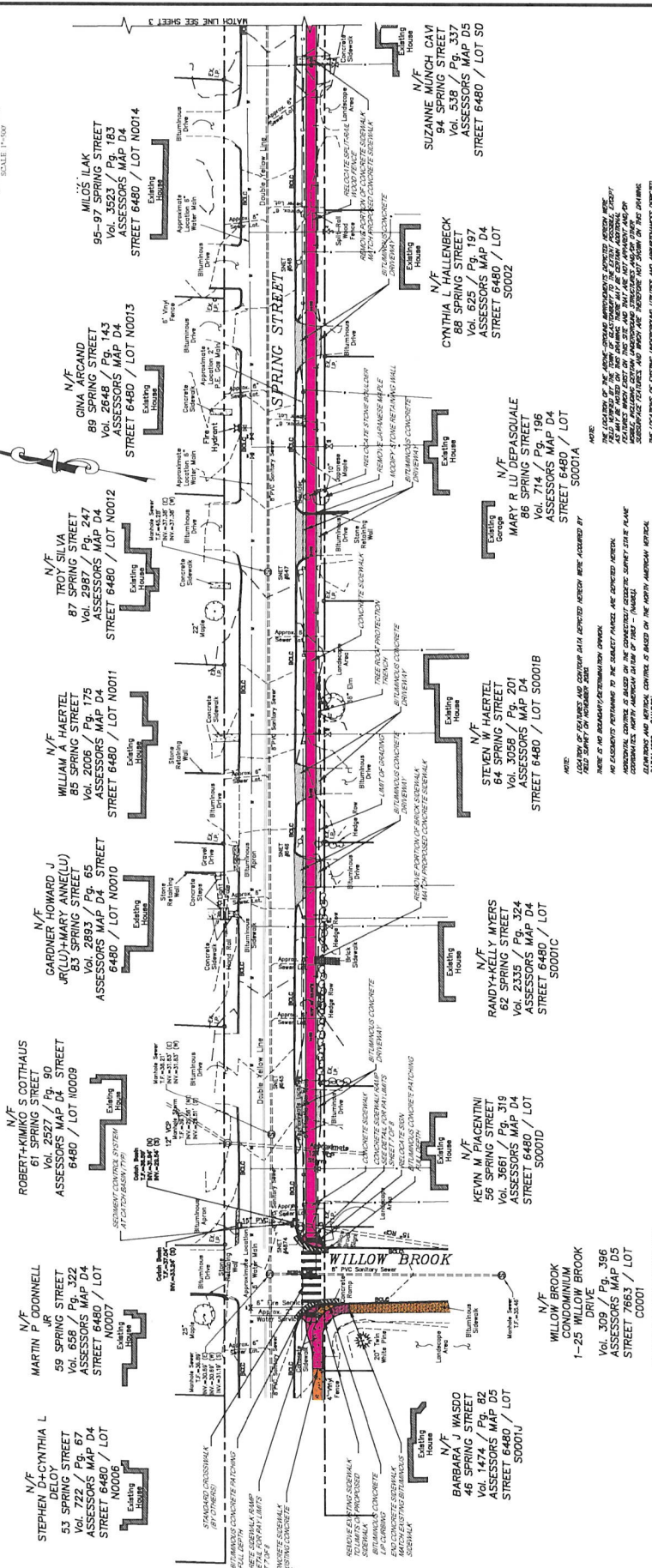
PH. 2014

PLAN
 DEPICTING SPRING STREET SIDEWALK
 INSTALLATION FROM
 WILLOW BROOK DRIVE TO
 SPRINGBROOK ROAD
 (SEE SHEET 11)

GLASTONBURY, CONNECTICUT



- LEGEND**
- (S) Existing Sanitary Manhole
 - (E) Existing Electric Manhole
 - (T) Existing Telephone Manhole
 - (U) Existing Utility Pole
 - (W) Existing Water Manhole
 - (F) Existing Fire Hydrant
 - (G) Existing Gas Gate
 - (C) Existing Type C/C Catch Basin
 - (D) Existing Storm Drain Manhole
 - (M) Existing Meter Manhole
 - (L) Existing Gas Meter
 - (K) Existing Sewer Catch Basin
 - (B) Existing Electric Chut
 - (I) Existing Ingress Line



NOTE:
 1. ALL DIMENSIONS SHOWN ARE PER THE RECORD PLANS FOR THE PROJECT.
 2. ALL DIMENSIONS SHOWN ARE PER THE RECORD PLANS FOR THE PROJECT.
 3. ALL DIMENSIONS SHOWN ARE PER THE RECORD PLANS FOR THE PROJECT.

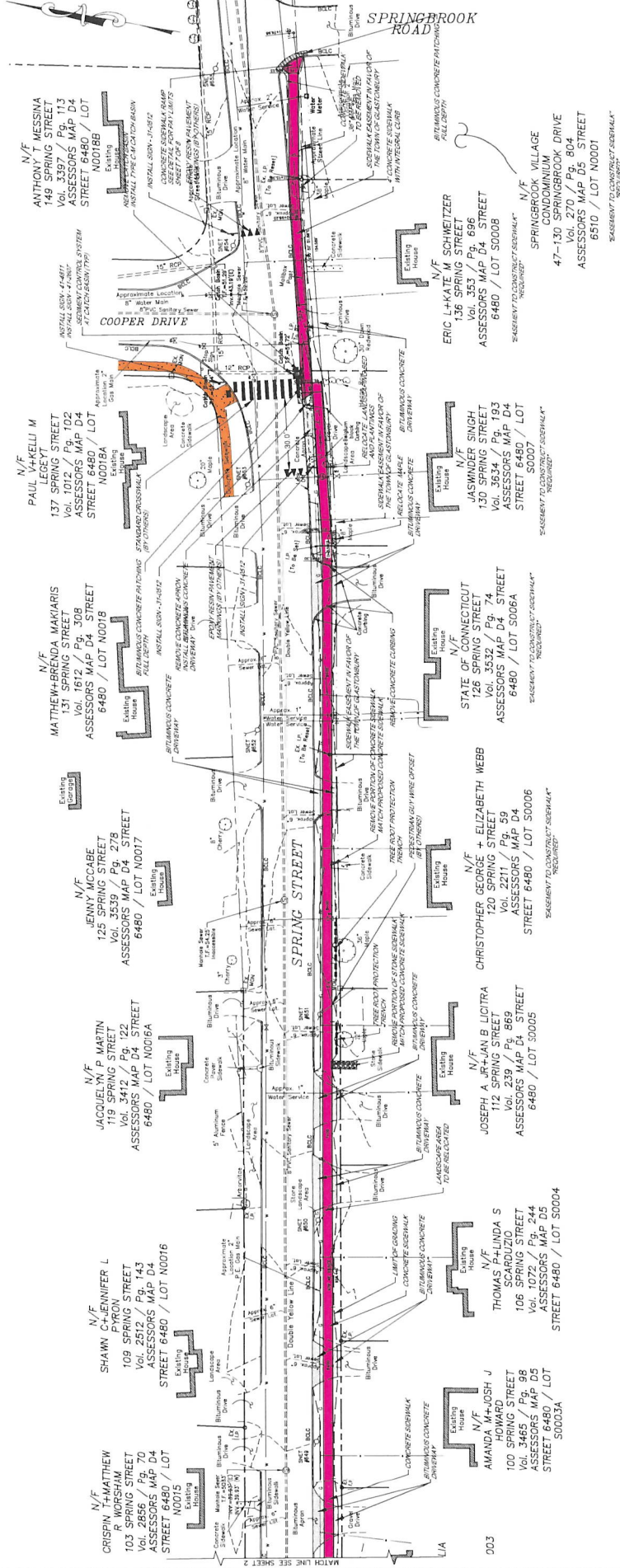
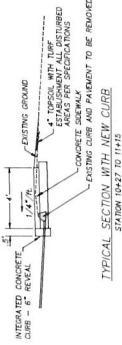
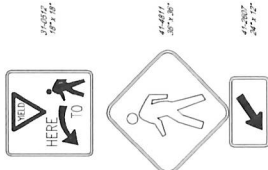
DATE AS SHOWN:
 DRAWN BY: G.M. 12-1-2020
 CHECKED BY: S.M.S.
 APPROVED BY: D.A.P.
 FILE NO. 19-001

NO.	DESCRIPTION	DATE
1.		



SEAL OF THE REGISTERED PROFESSIONAL ENGINEER
 STATE OF CONNECTICUT
 DANIEL A. PENNINGTON, P.E., REG. NO. 20101

Certified to be substantially correct
 DANIEL A. PENNINGTON, P.E., Reg. No. 20101



N/F
ANTHONY T. MESSINA
149 SPRING STREET
VOL. 3397 / Pg. 113
ASSESSORS MAP D4
STREET 6480 / LOT
N0018B

N/F
PAUL V. KELLI M
LEGEY
137 SPRING STREET
VOL. 1012 / Pg. 102
ASSESSORS MAP D4
STREET 6480 / LOT
N0018A

N/F
MATTHEW+BRENDA MAKIARIAS
131 SPRING STREET
VOL. 3532 / Pg. 74
ASSESSORS MAP D4
STREET 6480 / LOT N0018

N/F
JENNY MCCABE
125 SPRING STREET
VOL. 3539 / Pg. 278
ASSESSORS MAP D4
STREET 6480 / LOT N0017

N/F
JACQUELYN P. MARTIN
119 SPRING STREET
VOL. 3412 / Pg. 122
ASSESSORS MAP D4
STREET 6480 / LOT N0016A

N/F
SHAWN P. BRINNER L
109 SPRING STREET
VOL. 2512 / Pg. 143
ASSESSORS MAP D4
STREET 6480 / LOT N0016

N/F
CRISPIN J. MATTHEW
103 SPRING STREET
VOL. 2858 / Pg. 70
ASSESSORS MAP D4
STREET 6480 / LOT
N0015

N/F
ERIC L. KATE M. SCHWETZER
136 SPRING STREET
VOL. 353 / Pg. 696
ASSESSORS MAP D4
STREET 6480 / LOT S0008

N/F
JASWINDER SINGH
130 SPRING STREET
VOL. 3634 / Pg. 193
ASSESSORS MAP D4
STREET 6480 / LOT
S0007

N/F
STATE OF CONNECTICUT
126 SPRING STREET
VOL. 3532 / Pg. 74
ASSESSORS MAP D4
STREET 6480 / LOT S0006

N/F
CHRISTOPHER GEORGE + ELIZABETH WEBB
120 SPRING STREET
VOL. 2211 / Pg. 59
ASSESSORS MAP D4
STREET 6480 / LOT S0006

N/F
JOSEPH A. JR + JAN B. LICITRA
112 SPRING STREET
VOL. 239 / Pg. 869
ASSESSORS MAP D4
STREET 6480 / LOT S0005

N/F
THOMAS P. LINDA S
SCARUZIO
106 SPRING STREET
VOL. 1072 / Pg. 244
ASSESSORS MAP D5
STREET 6480 / LOT
S0003A

N/F
AMANDINE L. JOSH J
100 SPRING STREET
VOL. 3465 / Pg. 98
ASSESSORS MAP D5
STREET 6480 / LOT
S0003A

N/F
SPRINGBROOK VILLAGE
CONDOMINIUM
47-130 SPRINGBROOK DRIVE
VOL. 270 / Pg. 804
ASSESSORS MAP D5
STREET 6510 / LOT N0001
"BASEMENT TO CONCRETE SIDEWALK"
REQUIRED

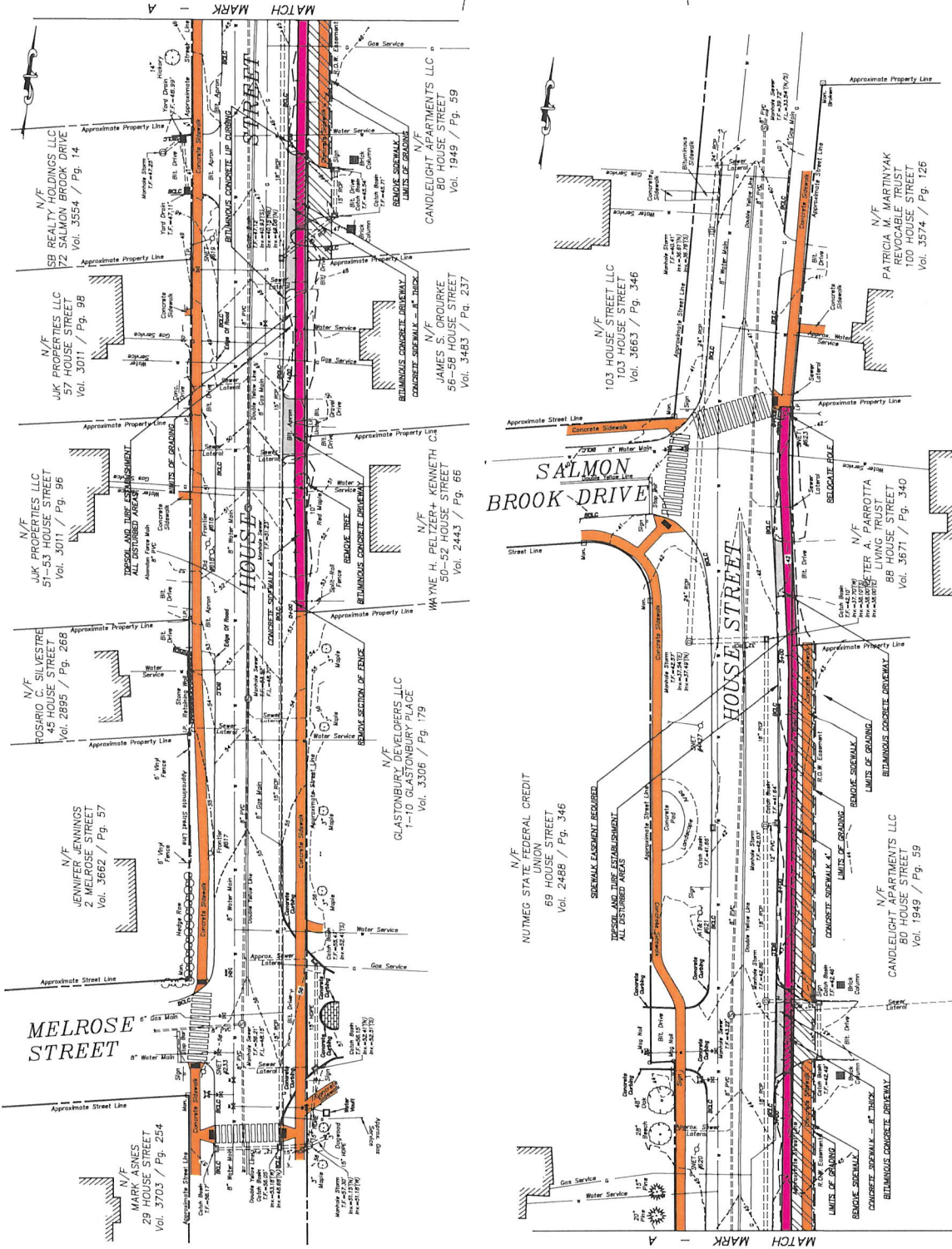
PLAN
DEPICTING SPRING STREET SIDEWALK
INSTALLATION FROM
WILLOW BROOK DRIVE TO
SPRINGBROOK ROAD

DATE: 11-13-2020
DRAWN BY: S.M.B.
CHECKED BY: S.M.B.
APPROVED BY: D.A.P.
DATE: 11-13-2020
SCALE: AS SHOWN

DATE: _____
DESCRIPTION: _____
NO. _____
IND. _____

GRAPHIC SCALE
1" = 10' (OR 20')
1" = 10' (OR 20')

PROJECT NO. 2017
SHEET 3 OF 11
DANIEL A. REYNOLDS, P.E. Reg. No. 20101
Certified to be substantially correct
GASTONART ENGINEERING DIVISION
100 W. MAIN ST. SUITE 201
LANSING, MI 48106



N/F SB REALTY HOLDINGS LLC
72 SALMON BROOK DRIVE
Vol. 3554 / Pg. 14

N/F J&K PROPERTIES LLC
57 HOUSE STREET
Vol. 3011 / Pg. 98

N/F J&K PROPERTIES LLC
51-53 HOUSE STREET
Vol. 3071 / Pg. 96

N/F ROSARIO C. SILVESTRE
45 HOUSE STREET
Vol. 2895 / Pg. 268

N/F JENNIFER JENNINGS
2 MELROSE STREET
Vol. 3662 / Pg. 57

N/F MARK ASNES
29 HOUSE STREET
Vol. 3703 / Pg. 254

N/F J&K PROPERTIES LLC
57 HOUSE STREET
Vol. 3011 / Pg. 98

N/F J&K PROPERTIES LLC
51-53 HOUSE STREET
Vol. 3071 / Pg. 96

N/F ROSARIO C. SILVESTRE
45 HOUSE STREET
Vol. 2895 / Pg. 268

N/F JENNIFER JENNINGS
2 MELROSE STREET
Vol. 3662 / Pg. 57

N/F MARK ASNES
29 HOUSE STREET
Vol. 3703 / Pg. 254

N/F J&K PROPERTIES LLC
57 HOUSE STREET
Vol. 3011 / Pg. 98

N/F J&K PROPERTIES LLC
51-53 HOUSE STREET
Vol. 3071 / Pg. 96

N/F ROSARIO C. SILVESTRE
45 HOUSE STREET
Vol. 2895 / Pg. 268

N/F JENNIFER JENNINGS
2 MELROSE STREET
Vol. 3662 / Pg. 57

N/F MARK ASNES
29 HOUSE STREET
Vol. 3703 / Pg. 254

N/F SB REALTY HOLDINGS LLC
72 SALMON BROOK DRIVE
Vol. 3554 / Pg. 14

N/F J&K PROPERTIES LLC
57 HOUSE STREET
Vol. 3011 / Pg. 98

N/F J&K PROPERTIES LLC
51-53 HOUSE STREET
Vol. 3071 / Pg. 96

N/F ROSARIO C. SILVESTRE
45 HOUSE STREET
Vol. 2895 / Pg. 268

N/F JENNIFER JENNINGS
2 MELROSE STREET
Vol. 3662 / Pg. 57

N/F MARK ASNES
29 HOUSE STREET
Vol. 3703 / Pg. 254

N/F J&K PROPERTIES LLC
57 HOUSE STREET
Vol. 3011 / Pg. 98

N/F J&K PROPERTIES LLC
51-53 HOUSE STREET
Vol. 3071 / Pg. 96

N/F ROSARIO C. SILVESTRE
45 HOUSE STREET
Vol. 2895 / Pg. 268

N/F JENNIFER JENNINGS
2 MELROSE STREET
Vol. 3662 / Pg. 57

N/F MARK ASNES
29 HOUSE STREET
Vol. 3703 / Pg. 254

N/F SB REALTY HOLDINGS LLC
72 SALMON BROOK DRIVE
Vol. 3554 / Pg. 14

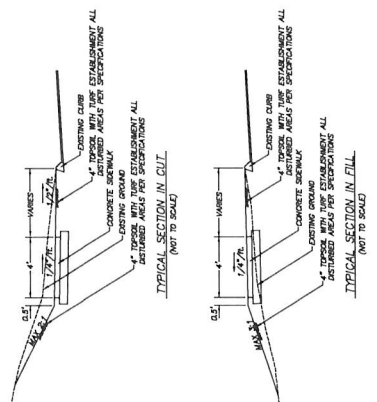
N/F J&K PROPERTIES LLC
57 HOUSE STREET
Vol. 3011 / Pg. 98

N/F J&K PROPERTIES LLC
51-53 HOUSE STREET
Vol. 3071 / Pg. 96

N/F ROSARIO C. SILVESTRE
45 HOUSE STREET
Vol. 2895 / Pg. 268

N/F JENNIFER JENNINGS
2 MELROSE STREET
Vol. 3662 / Pg. 57

N/F MARK ASNES
29 HOUSE STREET
Vol. 3703 / Pg. 254



PLANS DEPICTING
PROPOSED SIDEWALKS
FOR
HOUSE STREET
GLASTONBURY, CONNECTICUT

SHEET NO. 1 OF 2

GRAPHIC SCALE
1 inch = 20 ft.

NO.	DESCRIPTION	DATE
1.	NO.	DATE

DRAWING ISSUE STATUS

SCALE AS SHOWN	DATE
DRAWN BY: S. Troy	6-20-2017
CHECKED BY: S.M.E.	
APPROVED BY: D.A.C.	
DATE	

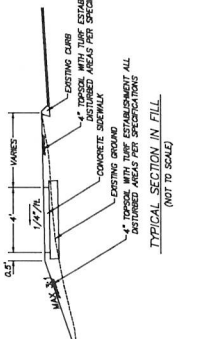
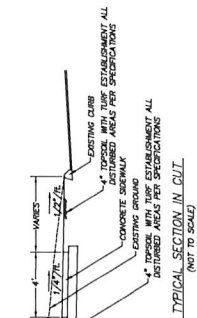
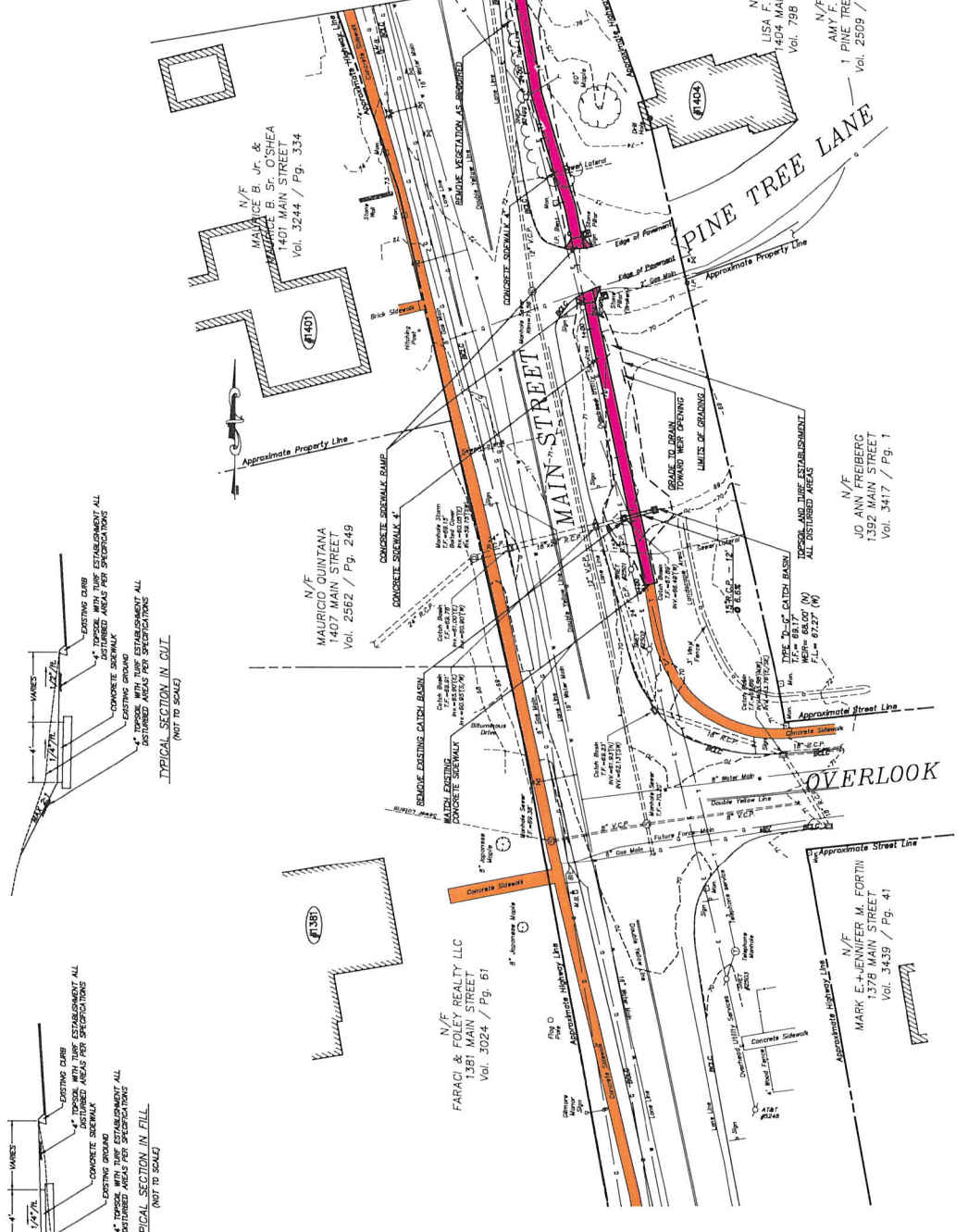
DRAWING NO. 2017-001

Certified to be substantially correct
DANIEL A. FEINIKOTY P.E. Reg. No. 20107



LITTLEVILLE
CONNECTICUT

MATCH MARK A



SHEET NO. 1 OF 1

PLAN DEPICTING PROPOSED SIDEWALKS ON MAIN STREET GLASTONBURY, CONNECTICUT

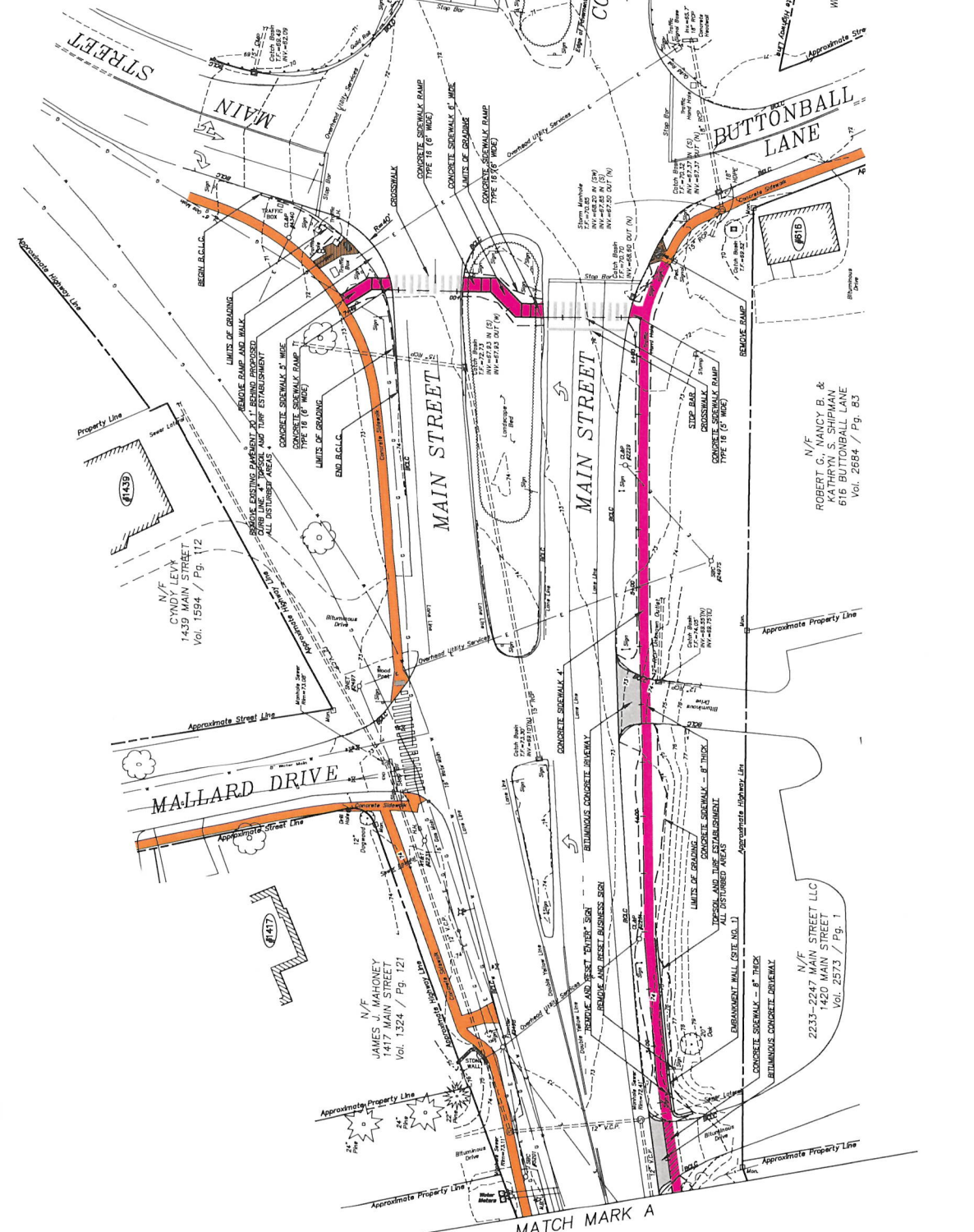
SCALE: AS SHOWN	DATE
DRAWN BY: S. STAY	
CHECKED BY: S.M.R.	
APPROVED BY: D.A.P.	
ST. FILED:	

DRAWING ISSUE STATUS	DATE	DESCRIPTION
1.		

P.W. 2007 162



Certified to be substantially correct
DANIEL A. PENNINGTON P.E. Reg. No. 20101



PLAN DEPICTING
PROPOSED SIDEWALKS
ON
MAIN STREET
GLASTONBURY, CONNECTICUT

2
OF 1

SCALE: AS SHOWN
DATE: _____
DRAWN BY: S. TRAY
CHECKED BY: S.M.B.
APPROVED BY: D.A.P.
ST. FILE: _____

DRAWING ISSUE STATUS

NO.	DATE	DESCRIPTION
1		
2		
3		
4		
5		
6		
7		
8		
9		
10		

P.W. 2007 162

GRAPHIC SCALE
1 inch = 50 ft

Certified to be substantially correct
DANIEL A. PENNINGTON P.E. Reg. No. 20101