

Install new 3'-1 1/4" x 9'-6" (29.5 ft) illuminated ground sign at 6'-2 1/2" OAH

E01 - M-25-RE



M-25-RE
DOUBLE-FACED ILLUMINATED MONUMENT - 25SE
 SCHEDULE



TITLE
 Chace New Builds
 ADDRESS
 CHS.NB.636 - Glastonbury
 109 New London Turnpike
 Glastonbury, CT 06033

DWG BY
 MMS
 DATE
 04/08/19
 DWG NUM
 B82833
 SHEET
 5

THIS IS AN ORIGINAL UNREVISED DRAWING. ANY CHANGES TO THIS DRAWING MUST BE MADE IN CONJUNCTION WITH A PROJECT NUMBER AND DATE. IT IS NOT TO BE USED FOR ANY OTHER PROJECTS WITHOUT THE WRITTEN PERMISSION OF THE DESIGNER. ANY REPRODUCTION OF THIS DRAWING WITHOUT THE WRITTEN PERMISSION OF THE DESIGNER IS STRICTLY PROHIBITED.



707 WEST SPRING GARDEN ST • PALMYRA, NJ • 08355 • P: 856-825-1460 • F: 856-825-8549 • WEB: <http://www.philadelphiasign.com>

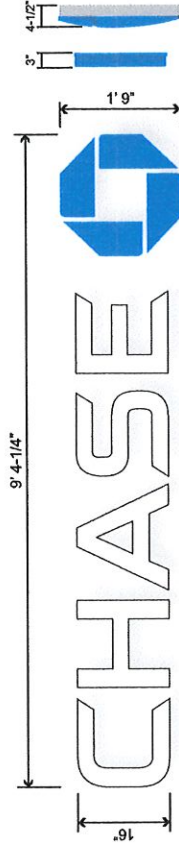
Revised 9/22/21

Install new 1'-9" x 9'-4" x 1'-4" (16.4) channel letter set

E03 - LIF-WBO-16-LED



West Elevation (New London Tpke)

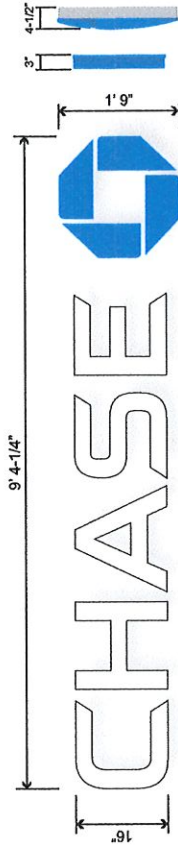
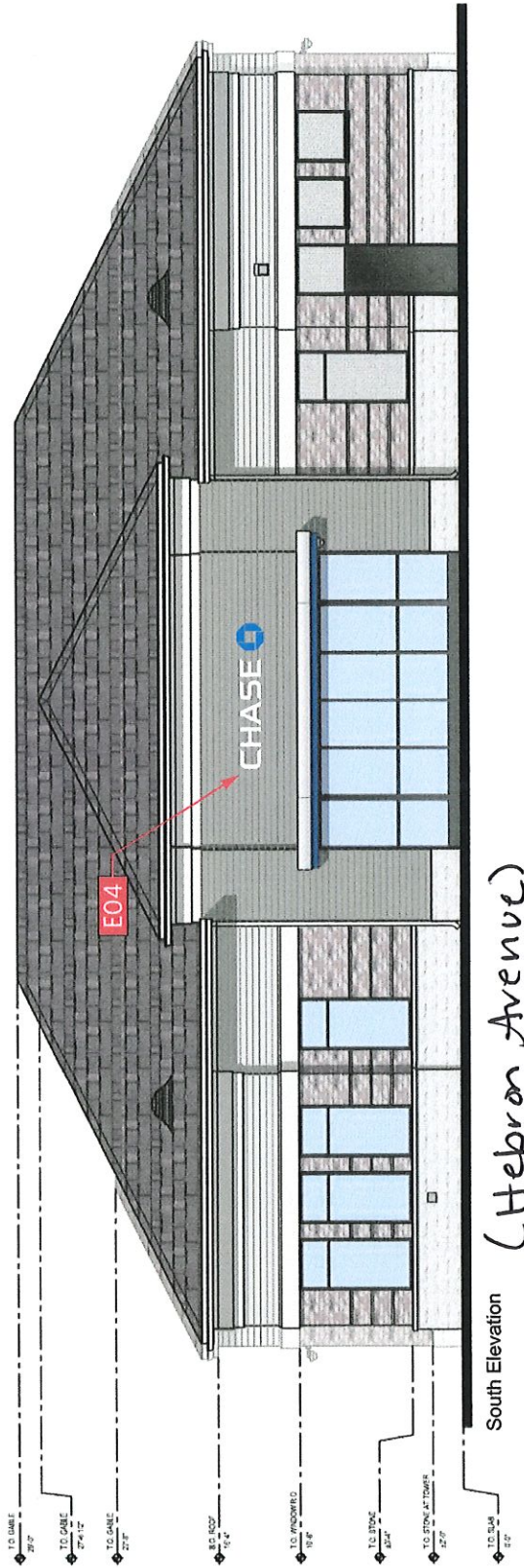


LIF-WBO-16-LED
 WHITE W/ BLUE OCTAGON ILLUM CHANNEL LETTERS - 16.4SE
 SCALE: NTS

Revised 9/22/21

Install new 1'-9" x 9'-4 1/4" (16.4 ft) channel letter set

E04 - LIF-WBO-16-LED



LIF-WBO-16-LED
 WHITE W/ BLUE OCTAGON ILLUM CHANNEL LETTERS - 16.4SE
 SCALE NTS

<p>PHILADELPHIASIGN BRINGING THE WORLD'S BRANDS TO LIFE</p>	<p>TITLE Chase New Builds</p>	<p>DWG BY MMS</p>	<p>DATE 04/08/19</p>	
	<p>ADDRESS CHS.NB.636 - Glastonbury 109 New London Turnpike Glastonbury, CT 06033</p>	<p>DWG NUM B82833</p>	<p>SHEET 9</p>	

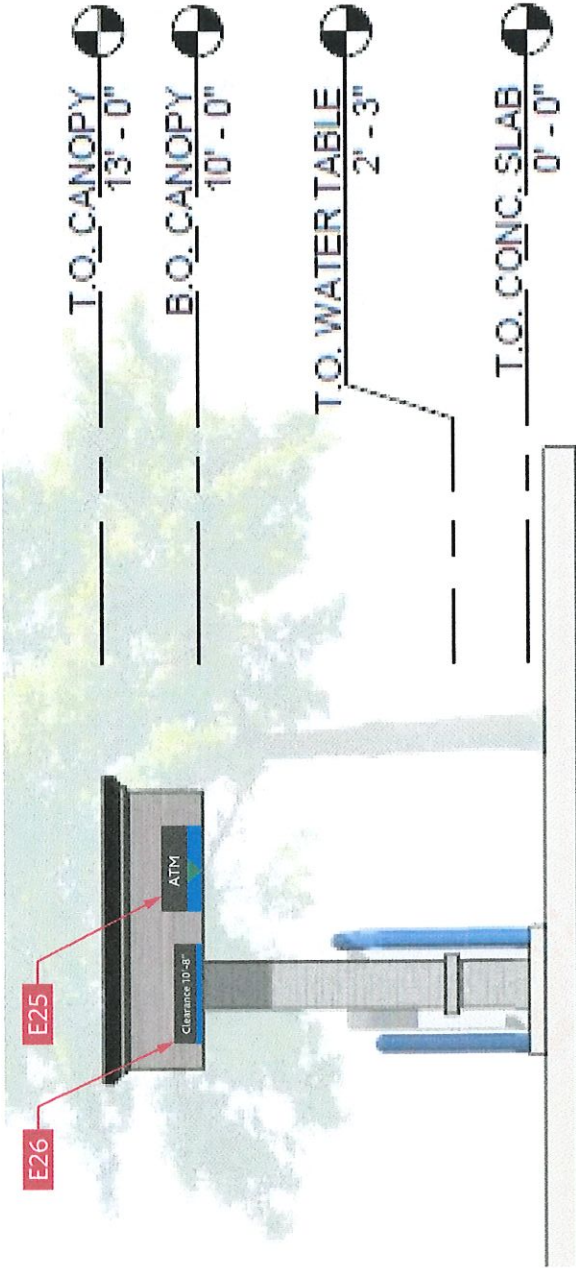
707 WEST SPRING GARDEN ST. • PALMYRA, NJ • 08056 • P: 856-859-1480 • F: 856-859-3549 • WEB: <http://www.philadelphia-sign.com>

Revised 9/22/21

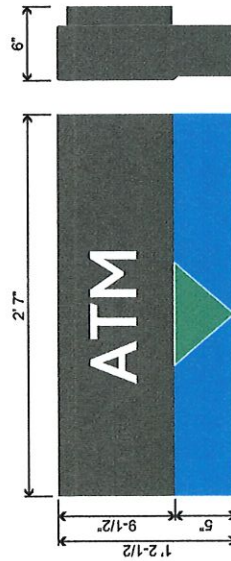
Install new drive-thru canopy directional signs

E25 - DU-C-A

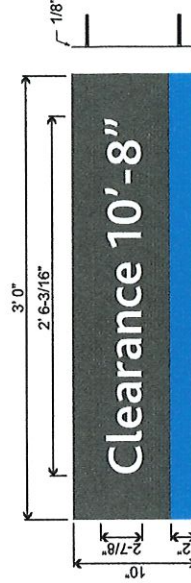
E26 - TC-CL-W



Approach Elevation



DU-C-A
ILLUMINATED DRIVE-UP LANE DESIGNATOR "ATM" - 3.15F
SCALE: NTS



TC-CL-W
NON-ILLUMINATED CLEARANCE SIGN - 2.15F
SCALE: NTS



PHILADELPHIASIGN
BRINGING THE WORLD'S BRANDS TO LIFE

TITLE: Chase New Builds
ADDRESS: CHS.NB.636 - Glastonbury
109 New London Turnpike
Glastonbury, CT 06033

DWG BY: MMS
DATE: 04/08/19
DWG NUM: B82833
SHEET: 11

THIS IS AN ORIGINAL UNPUBLISHED DRAWING CREATED BY P.S.C.O. INC. FOR USE IN CONNECTION WITH A PROJECT BEING PLANNED FOR YOU BY P.S.C.O. INC. THIS DRAWING IS THE PROPERTY OF P.S.C.O. INC. IT IS TO BE USED, COPIED, REPRODUCED, OR LOANED IN ANY MANNER WITHOUT THE WRITTEN PERMISSION OF P.S.C.O. INC.



Revised 9/22/21