



KURT A. PROCHORENA, PE No. 20375

ADDISON PARK SPLASH PAD

415 ADDISON ROAD
IN
GLASTONBURY CONNECTICUT

SITE PLAN

MARCH 23, 2021

REVISIONS:

NO.	DESCRIPTION

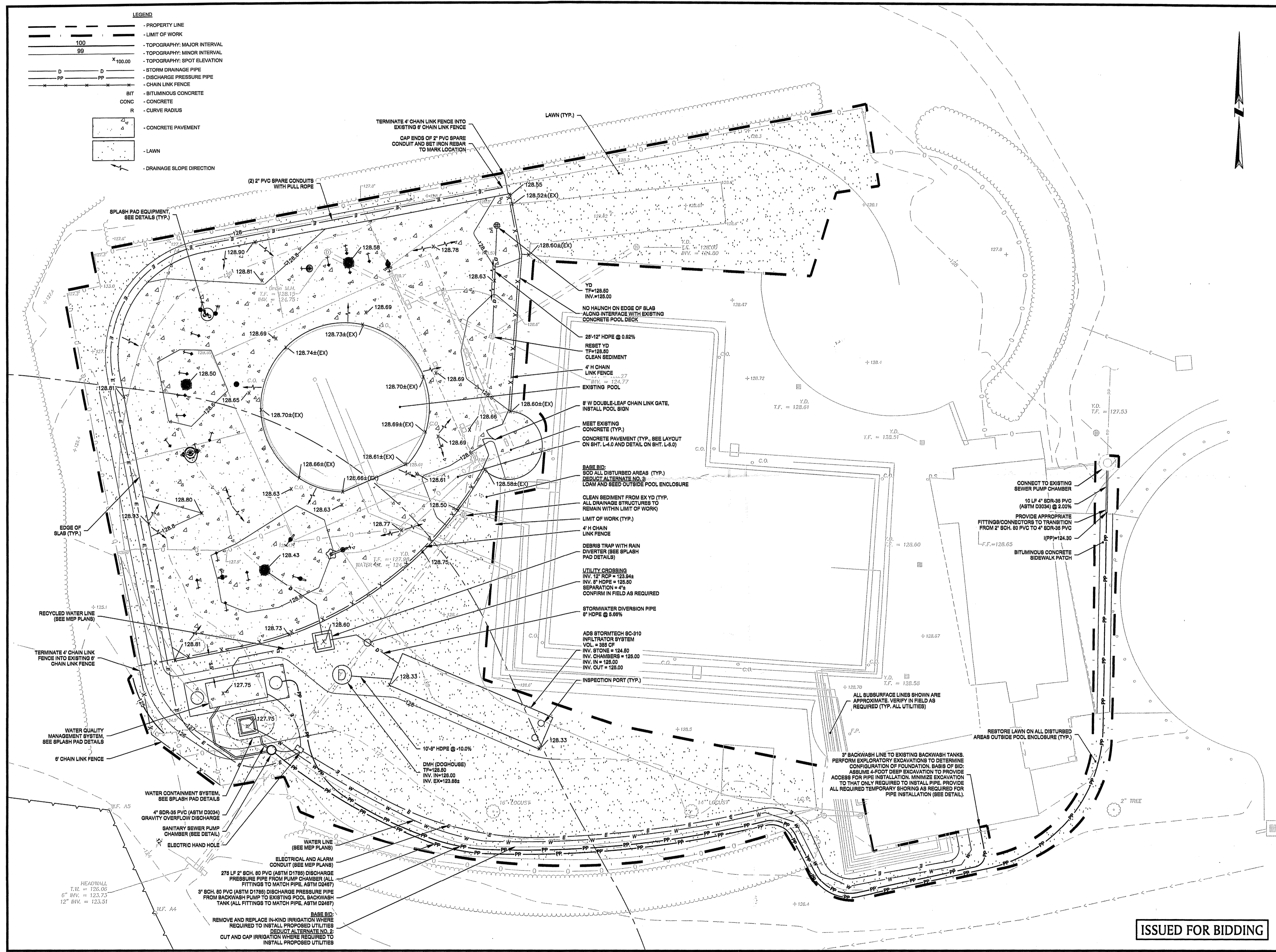
PREPARED FOR:
TOWN OF GLASTONBURY
2155 MAIN STREET
GLASTONBURY, CT 06033

BSC GROUP

655 Winding Brook Drive
Glastonbury, Connecticut 06033
860 652 8227

© 2021 BSC GROUP, INC.
SCALE: 1" = 10'
FILE: 83767.01-SP.DWG
DWG. NO.:
JOB. NO.: 83767.01

L-3.0



ISSUED FOR BIDDING