

PROJECT LIMIT SIGNAGE  
SCALE: 1" = 100'

**PROJECT NARRATIVE:**

THIS PROJECT INVOLVES THE CONSTRUCTION OF A 136' X 64' BITUMINOUS PLAY SURFACE FOR PICKLEBALL WITH ASSOCIATED EXCAVATION AND STONE BASE MATERIAL CONSTRUCTION. DRAINAGE IMPROVEMENTS INCLUDE A PVC UNDERDRAIN SURROUNDING THE PLAY SURFACE, AND A STONE INFILTRATION TRENCH AND WATER QUALITY BASIN FOR WATER QUALITY IMPROVEMENT AS SHOWN ON THE ATTACHED PLANS. ELECTRICAL CONDUITS WILL ALSO BE INSTALLED TO SUPPORT FUTURE LIGHTING IMPROVEMENTS AS SHOWN ON THE PLANS. THE TOTAL AREA OF DISTURBANCE ASSOCIATED WITH THIS PROJECT IS APPROXIMATELY 0.5 ACRES.

A PORTION OF THE PROJECT IS BEING CONSTRUCTED WITHIN THE 100 YEAR FLOOD ZONE OF THE CT RIVER WHICH IS THAT PORTION BELOW ELEVATION 27.8'. THE GRADING FOR THE WATER QUALITY BASIN HAS BEEN DESIGNED TO OFFSET THE FILL ASSOCIATED WITH THE BITUMINOUS PLAYING SURFACE. GRADING SHALL BE PERFORMED AS PER THE APPROVED PLAN AND AS REQUIRED TO ENSURE THAT NO NET FILL OR LOSS OF FLOOD STORAGE WITH THE FLOOD ZONE RESULTS FROM THE PROJECT.

**PROJECT SPECIFIC SEDIMENTATION AND EROSION CONTROL PLAN**

CONSTRUCTION ACTIVITIES OF CONCERN RELATIVE TO THE PROTECTION OF ADJACENT WETLANDS AND WATERCOURSES FROM SEDIMENTATION ARE AS FOLLOWS:

1. DEWATERING: OPEN TRENCH EXCAVATIONS WILL NEED TO BE DEWATERED AS NECESSARY FOR PROPER INSTALLATION OF THE PROPOSED PIPES. IN THESE AREAS, ALL WATER REMOVED FROM THE TRENCH SHALL BE ADEQUATELY TREATED PRIOR TO DISCHARGE USING MEASURES DESCRIBED IN SECTION 5-13 OF THE 2002 CT GUIDELINES FOR EROSION AND SEDIMENT CONTROL. THIS MAY INCLUDE A STONE SUMP AND STANDPIPE FOR PUMP INTAKE PROTECTION, AND A DIRT BAG OR PUMPING SETTLING BASIN FOR TREATMENT OF THE PUMPED WATER PRIOR TO DISCHARGE.
2. STOCKPIILING: EXCAVATED MATERIAL SHALL NOT BE STOCKPIILED ADJACENT TO STORM DRAIN INLETS, WETLANDS, OR WATERCOURSES. WHEN IT IS NECESSARY BASED ON THE PROPOSED METHODS OF CONSTRUCTION TO STAGE EXCAVATED MATERIAL FOR SHORT DURATIONS IN THE VICINITY OF STORM DRAIN INLETS, THESE INLETS SHALL BE PROPERLY PROTECTED AS DESCRIBED ON THE PLANS. LONGER DURATION STOCKPIILING OF MATERIAL, WHEN NECESSARY, SHALL BE ONLY IN LOCATIONS APPROVED IN ADVANCE BY THE ENGINEER, AND SUCH STOCKPIILES SHALL BE RINGED WITH A SEDIMENTATION CONTROL SYSTEM.
3. DISTURBED AREAS: LIMITS OF DISTURBANCE SHALL BE IN STRICT ACCORDANCE WITH THE APPROVED PLAN. ALL AREAS DISTURBED BY CONSTRUCTION SHALL BE STABILIZED WITH THE FINAL SURFACE TREATMENT AS SOON AS POSSIBLE AFTER CONSTRUCTION ACTIVITIES ARE COMPLETED. DISTURBED AREAS WITH STEEP OR LONG SLOPES AND OTHER AREAS WITH SIGNIFICANT POTENTIAL FOR CAUSING SEDIMENTATION SHALL BE PROTECTED WITH TEMPORARY STRAW MULCH, WOOD CHIPS, EROSION CONTROL MATTING, OR OTHER SUITABLE MATERIALS PRIOR TO SIGNIFICANT FORECASTED RAIN STORM EVENTS TO REDUCE EROSION POTENTIAL.
4. TRAVEL AREAS: THE EXISTING STONE ACCESS ROAD SURROUNDING THE PROJECT SITE SHALL BE USED FOR CONSTRUCTION ACCESS TO THE WORK AREA TO PREVENT SOIL FROM BEING TRACKED OUT INTO THE SURROUNDING PARKING LOT AND ROADWAYS.
5. SEVERE WEATHER CONTINGENCY PLAN: IN ADVANCE OF A SEVERE WEATHER EVENT, ALL EROSION CONTROLS DESCRIBED ABOVE AND ELSEWHERE ON THE PLANS SHALL BE INSPECTED AND ADJUSTED AS NECESSARY.

**RESPONSIBLE PARTY:**

THE CONTRACTOR SHALL PROVIDE A REPRESENTATIVE WHO IS RESPONSIBLE FOR IMPLEMENTING THE EROSION AND SEDIMENTATION CONTROL PLAN. THIS INDIVIDUAL SHALL BE RESPONSIBLE FOR THE MAINTENANCE OF ALL CONTROL MEASURES, INFORMING ALL PARTIES ENGAGED ON THE CONSTRUCTION SITE OF THE REQUIREMENTS AND OBJECTIVES OF THE PLAN.

**MAINTENANCE PLAN FOR STORMWATER FACILITIES:**

GENERAL: THE PROPOSED DRAINAGE SYSTEM TO BE INSTALLED AS PART OF THIS PROJECT WILL REQUIRE ROUTINE MAINTENANCE IN ORDER TO MAINTAIN PROPER FUNCTION OF WATER QUALITY IMPROVEMENT FEATURES. THESE FEATURES INCLUDE THE WATER QUALITY BASIN AND INFILTRATION TRENCH. THE TOWN OF GLASTONBURY HIGHWAY DEPARTMENT WILL BE RESPONSIBLE FOR MAINTENANCE OF ALL COMPONENTS OF THE PROPOSED STORM DRAINAGE SYSTEM.

WATER QUALITY BASIN: WATER QUALITY BASIN WILL BE MOWED AS NECESSARY TO PREVENT WOODY VEGETATIVE GROWTH WHICH WOULD INHIBIT FUNCTION. BASIN WILL BE INSPECTED ANNUALLY FOR SIGNS OF SEDIMENT DEPOSITS OR EROSION AND CLEANED AS NECESSARY.

INFILTRATION TRENCH: SURFICIAL STONE OF INFILTRATION TRENCH SHALL BE KEPT FREE OF DEBRIS AND ORGANIC MATERIAL THAT WOULD INHIBIT THE FLOW OF SURFACE WATER INTO THE TRENCH. GRASS CLIPPING AND LEAF DEBRIS SHALL BE COLLECTED OR BLOWN OFF FROM THE SURFACE OF THE TRENCH DURING ROUTINE MOWING AND LEAF REMOVAL OPERATIONS TO MAINTAIN INFILTRATION POTENTIAL.

**GENERAL SEDIMENTATION AND EROSION CONTROL REQUIREMENTS:**

THESE GUIDELINES SHALL APPLY TO ALL WORK CONSISTING OF ANY AND ALL TEMPORARY AND/OR PERMANENT MEASURES TO CONTROL WATER POLLUTION AND SOIL EROSION AS MAY BE REQUIRED, DURING THE CONSTRUCTION OF THE PROJECT.

IN GENERAL, ALL ACTIVITIES SHALL PROCEED IN SUCH A MANNER SO AS NOT TO POLLUTE ANY WETLANDS, WATERCOURSE, WATERBODY, AND CONDUIT CARRYING WATER, ETC. THE DEPARTMENT OF PHYSICAL SERVICES SHALL LIMIT, INsofar AS POSSIBLE, THE SURFACE AREA OF EARTH MATERIALS EXPOSED BY CONSTRUCTION METHODS, AND IMMEDIATELY PROVIDE PERMANENT AND TEMPORARY POLLUTION CONTROL MEASURES TO PREVENT CONTAMINATION OF ADJACENT WETLANDS, WATERCOURSES AND WATERBODIES, AND TO PREVENT, INsofar AS POSSIBLE, EROSION ON THE SITE.

CONSTRUCTION METHODS, IN GENERAL, SHALL BE IN ACCORDANCE WITH THE PROVISIONS SET FORTH IN THE "GUIDELINES FOR SOIL EROSION AND SEDIMENT CONTROL" (2002) BY THE STATE OF CONNECTICUT COUNCIL ON SOIL AND WATER CONSERVATION.

1. ALL CONTROL MEASURES SHALL BE INSTALLED AS NOTED ABOVE AND AS SHOWN ON THE PLANS.
2. ALL CONTROL MEASURES SHALL BE INSPECTED AND APPROVED BY THE ENGINEER PRIOR TO COMMENCEMENT OF ANY WORK, INCLUDING PRE-CONSTRUCTION CLEARING AND GRUBBING.
3. ALL CONTROL MEASURES SHALL BE MAINTAINED AND UPGRADED AS REQUIRED TO ACHIEVE PROPER SEDIMENT CONTROL THROUGHOUT THE CONSTRUCTION PERIOD AND UNTIL DISTURBED AREAS HAVE BEEN THOROUGHLY STABILIZED.
4. NO CONTROL MEASURES SHALL BE REMOVED WITHOUT APPROVAL FROM THE ENGINEER.
5. ADDITIONAL CONTROL MEASURES SHALL BE INSTALLED DURING THE CONSTRUCTION PERIOD IF DEEMED NECESSARY BY THE ENGINEER.
6. THE LIMITS OF CLEARING, GRADING AND DISTURBANCE, AS SHOWN ON THE PLAN(S), SHALL BE KEPT TO A MINIMUM WITHIN THE APPROVED AREA OF CONSTRUCTION. ALL AREAS OUTSIDE THE LIMITS OF CLEARING SHALL REMAIN TOTALLY INDISTURBED.
7. ANY CONTROL MEASURES RETAINING SEDIMENT OVER 1/2 THEIR HEIGHT SHALL HAVE THE SEDIMENT IMMEDIATELY REMOVED, AND ALL DAMAGED CONTROL MEASURES SHALL BE REMOVED AND REPLACED.
8. ALL NEW AND EXISTING CATCH BASINS LOCATED WITHIN THE PROJECT LIMITS SHALL BE PROTECTED WITH A SEDIMENTATION CONTROL SYSTEM IN GRASSED AREAS OR WITH A SEDIMENTATION CONTROL SACK IN PAVED AREAS UNTIL ALL DISTURBED AREAS HAVE BEEN THOROUGHLY STABILIZED.
9. SEDIMENT REMOVED FROM CONTROL MEASURES AND DRAINAGE FACILITIES SHALL BE DISPOSED OF IN A MANNER THAT IS CONSISTENT WITH STATE AND LOCAL REGULATIONS.
10. THE PLANTING SEASONS FOR THE SPECIFIED SEED MIXTURE SHALL BE AS DEFINED IN THE 2002 CONNECTICUT GUIDELINES FOR SOIL EROSION AND SEDIMENT CONTROL, UNLESS DIRECTED OTHERWISE BY THE TOWN ENVIRONMENTAL PLANNER. OUTSIDE OF THESE SPECIFIED DATES AREAS WILL BE STABILIZED WITH HAYBALE CHECK DAMS, FILTER FABRIC, OR WOODCHIP MULCH AS REQUIRED TO CONTROL EROSION.

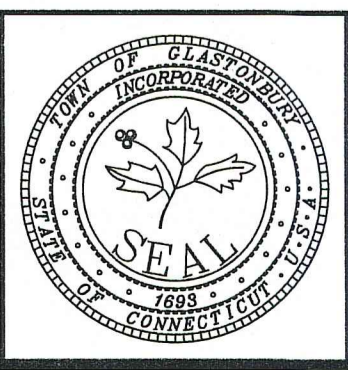
- SURVEY NOTES:**
1. LOCATION OF FEATURES AND CONTOUR DATA DEPICTED HEREON WITHIN THE GROUNDS OF THE RIVERFRONT COMMUNITY CENTER (ABOVE ELEVATION 24) WERE ACQUIRED BY FIELD SURVEY IN APRIL OF 2021, SUPPLEMENTED BY RECORD TOPOGRAPHIC INFORMATION ALONG THE CT RIVER BANK COMPILED FROM THE PLAN ENTITLED "ASBUILT TOPOGRAPHIC SURVEY PROPERTY OF THE TOWN OF GLASTONBURY LOCATED AT 252 AND 300 WELLES STREET" PREPARED AS PART OF THE RIVERFRONT PARK PHASE 2 PROJECT. WETLANDS DELINEATION DEPICTED HEREON WAS ALSO OBTAINED FROM THE AFORE-MENTIONED PLAN.
  2. REFERENCE FOR FLOOD WAY AND FLOOD ZONES IS MADE TO THE FLOOD INSURANCE RATE MAP ENTITLED: "NATIONAL FLOOD INSURANCE PROGRAM PANEL 0528F FIRM FLOOD INSURANCE RATE MAP HARTFORD COUNTY, CONNECTICUT (ALL JURISDICTIONS) PANEL 528 OF 875 MAP NUMBER 0903030528F U.S. DEPARTMENT OF HOMELAND SECURITY EFFECTIVE DATE: SEPTEMBER 26, 2008 FEDERAL EMERGENCY MANAGEMENT AGENCY.
  3. HORIZONTAL CONTROL IS BASED ON THE CONNECTICUT GEODETIC SURVEY STATE PLANE COORDINATES, NORTH AMERICAN DATUM OF 1983 - (NAD83).
  4. ELEVATIONS AND VERTICAL CONTROL IS BASED ON THE NORTH AMERICAN VERTICAL DATUM 1988 - (NAV88).
  5. THERE IS NO BOUNDARY/DETERMINATION OPINION.
  6. NO EASEMENTS PERTAINING TO THE SUBJECT PARCEL ARE DEPICTED HEREON.
  7. NOT ALL IMPROVEMENTS ARE DEPICTED HEREON.

Certified to be substantially correct

DANIEL A. PENNINGTON P.E. Reg. No. 20101

GRAPHIC SCALE  
1 inch = 20 ft.

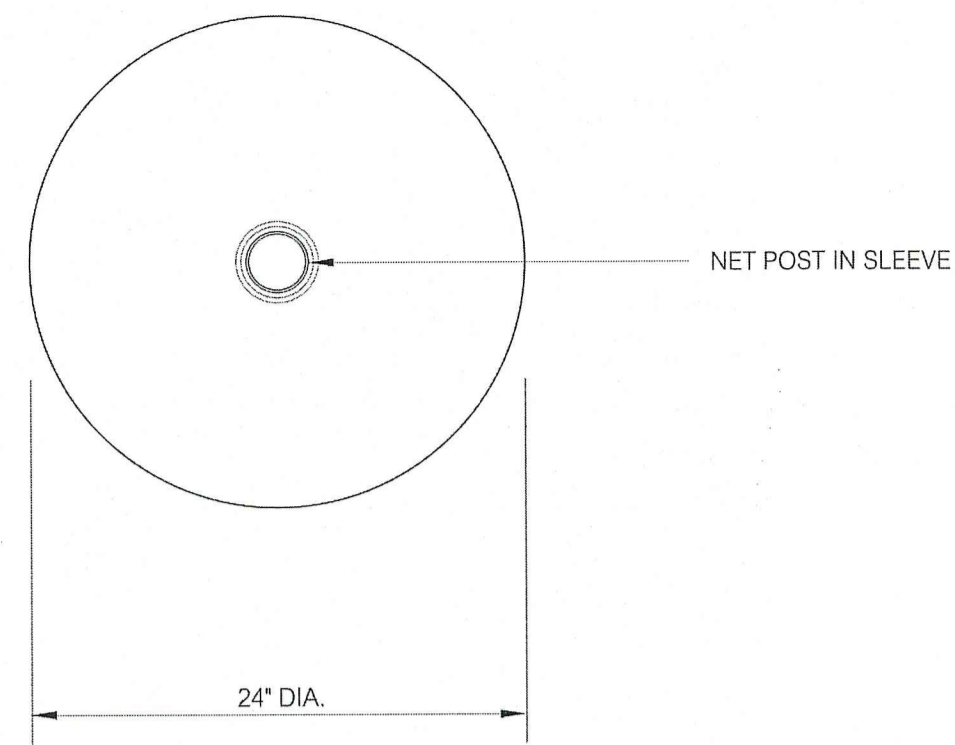
DRAWING ISSUE STATUS		SCALE: AS SHOWN	DATE:
		DRAWN BY: S.Troy	5/7/2021
		CHECKED BY: S.M.B.	6/14/2021
		APPROVED BY: D.A.P.	6/14/2021
2.	ISSUED FOR CONSTRUCTION	7-28-2021	ST. FILE:
1.	ISSUED FOR PERMITTING	6/14/2021	
NO.	DESCRIPTION	DATE	



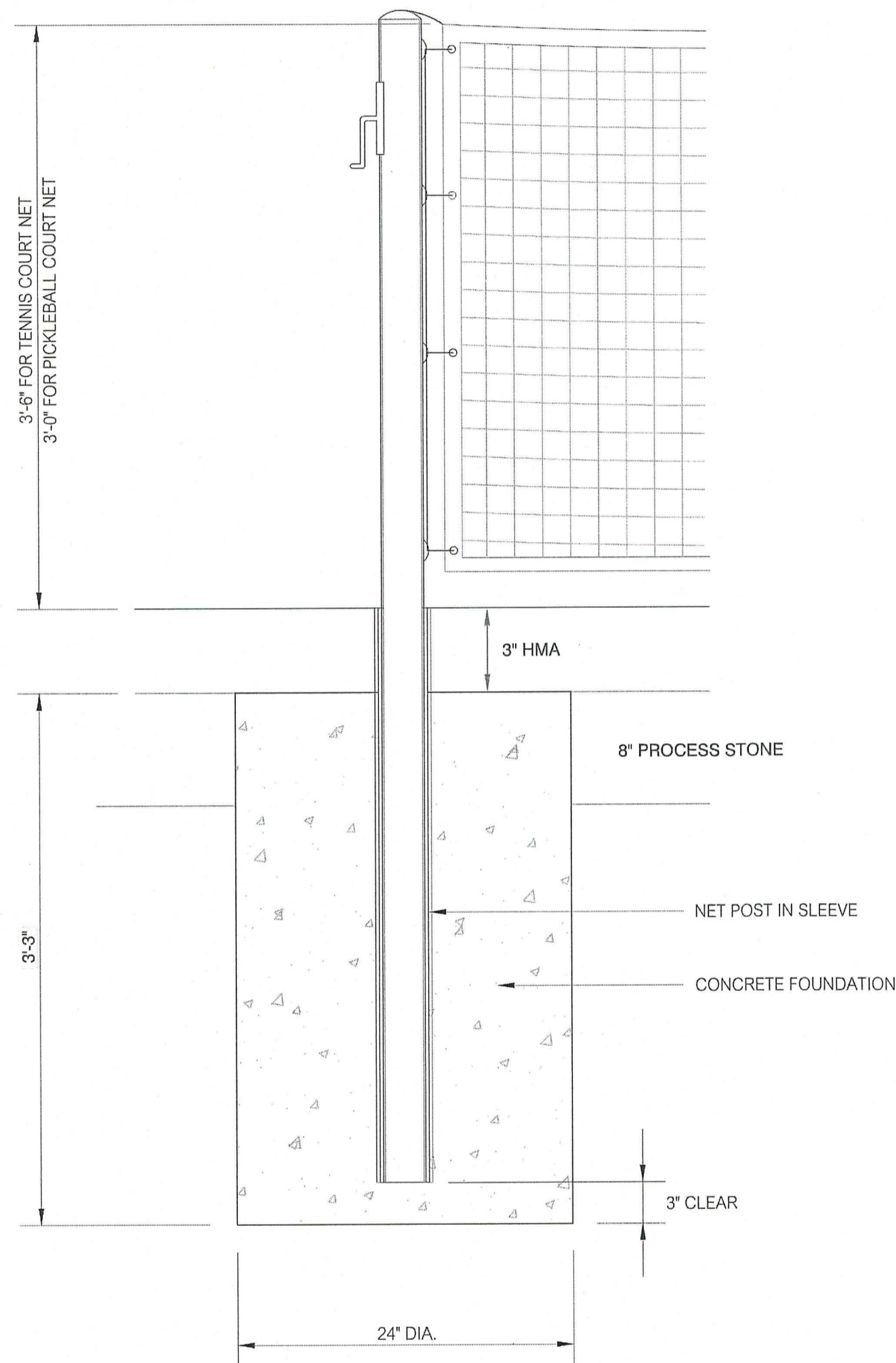
PLANS DEPICTING  
PICKLEBALL COURTS  
LOCATED AT  
RIVERFRONT COMMUNITY CENTER  
300 WELLES STREET  
GLASTONBURY, CONNECTICUT

SHEET NO. 1 OF 2

FILE: E:\DWG\Stress\Welles\_Strip\2109 RCC Pickleball Courts\Community Center Pickleball Courts - Design Plans YER 2021.dwg USER: Steven Troy DATE: 7/26/2021

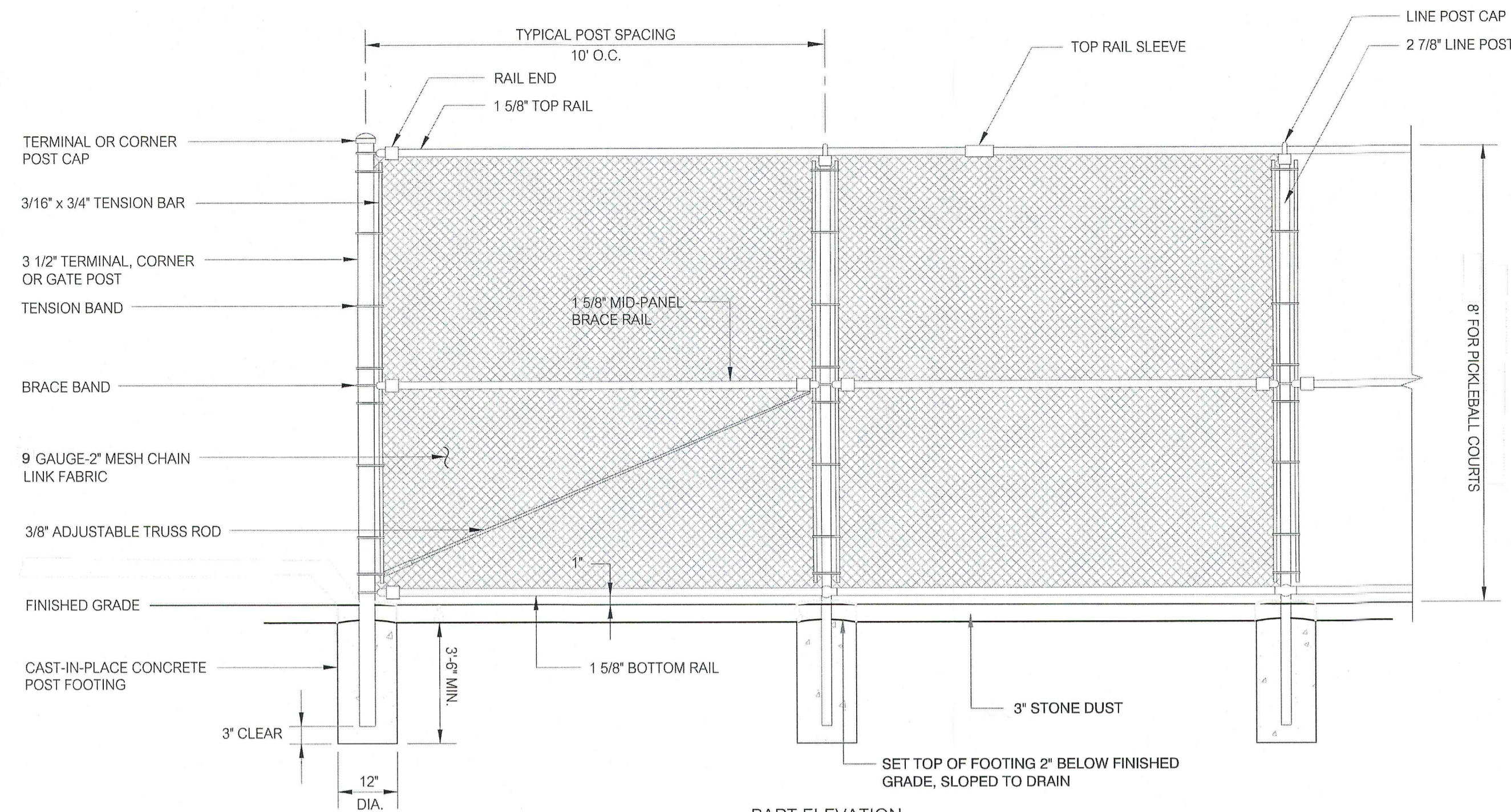


PLAN



SECTION

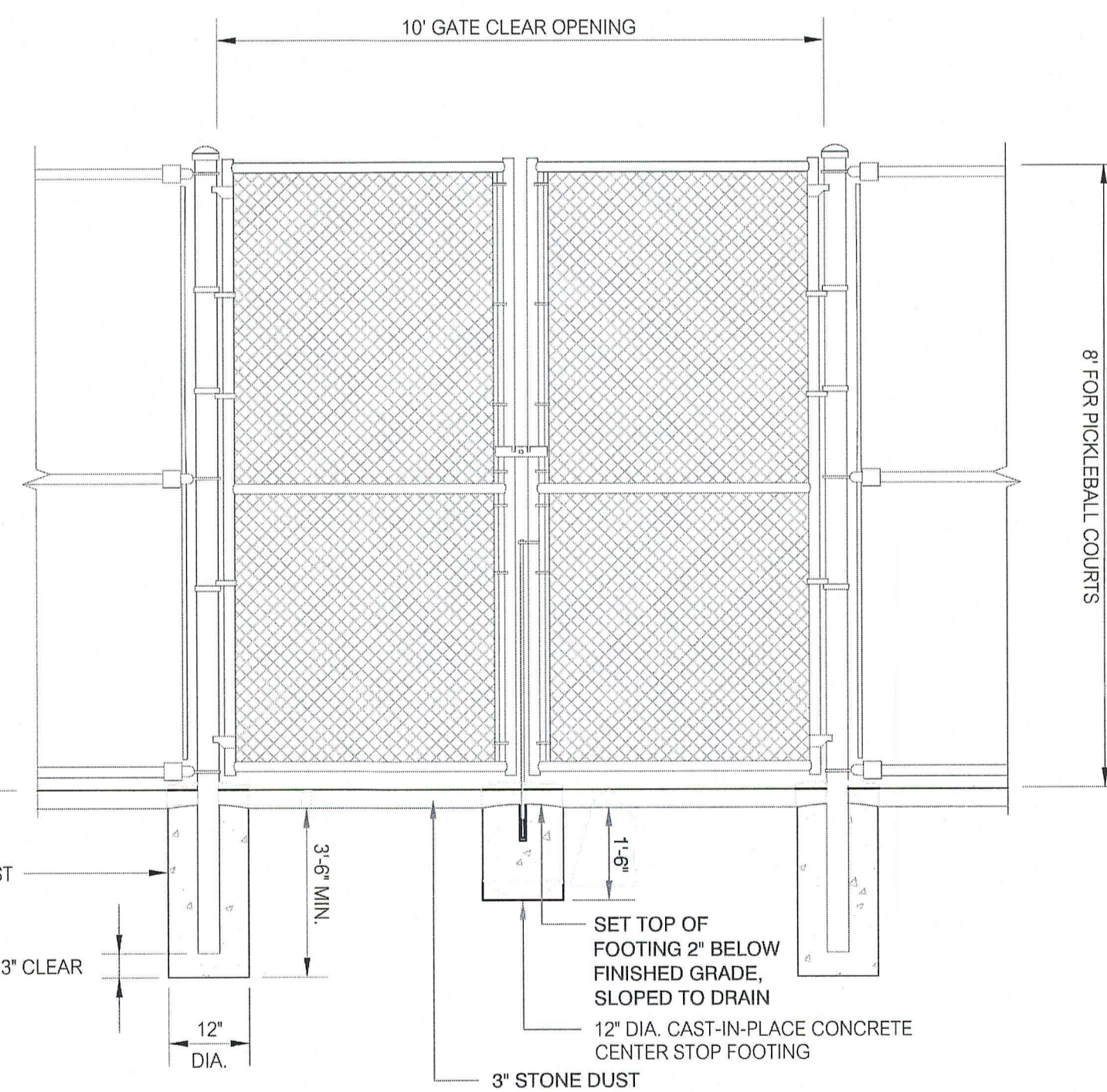
NET POST  
1"=1'-0"



PART ELEVATION

CHAIN LINK FENCE  
NOT TO SCALE

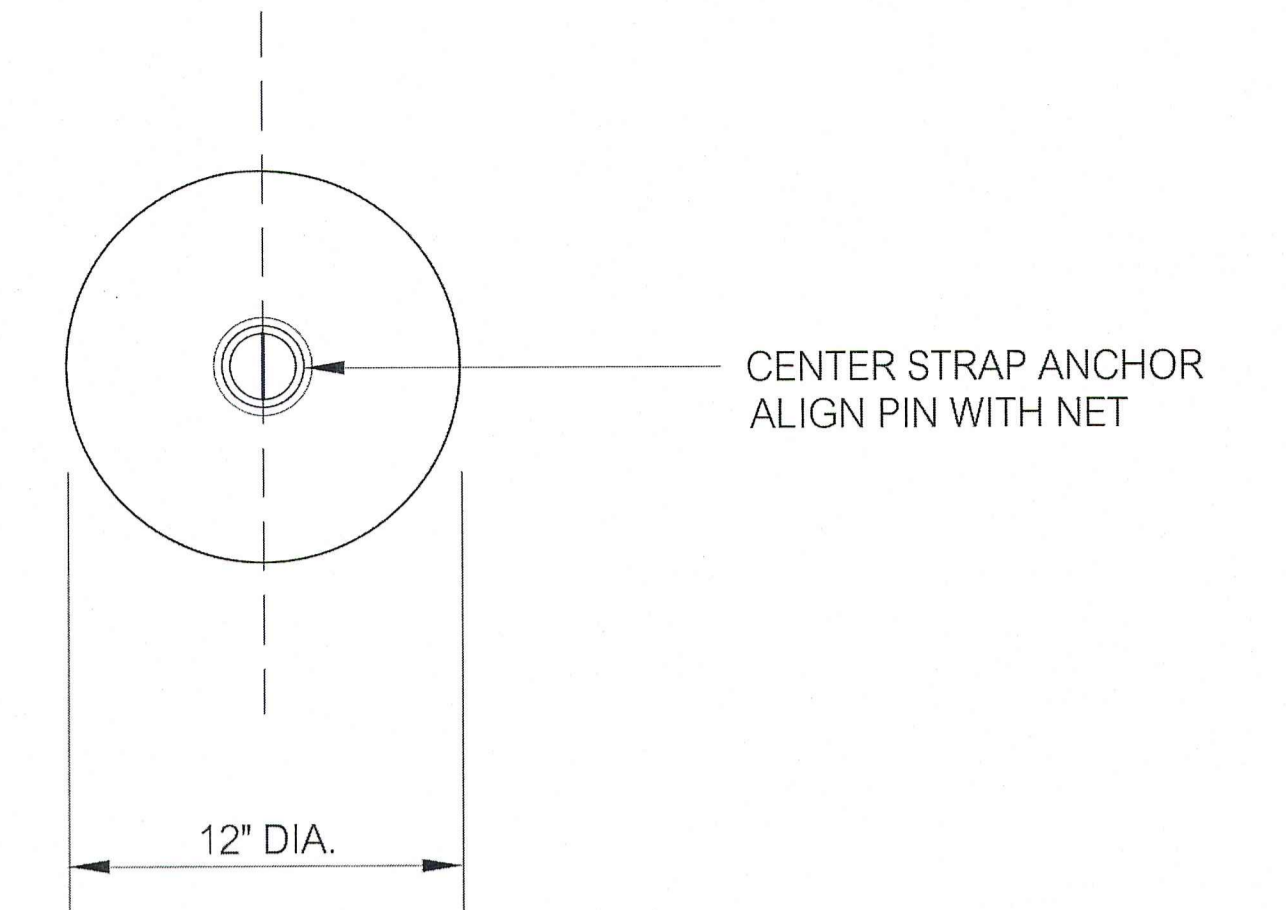
NOTES:  
1. CHAIN LINK FABRIC, POSTS, RAILS, FITTINGS AND FASTENERS SHALL BE POLYVINYL CHLORIDE (PVC) COATED, COLOR-BLACK.



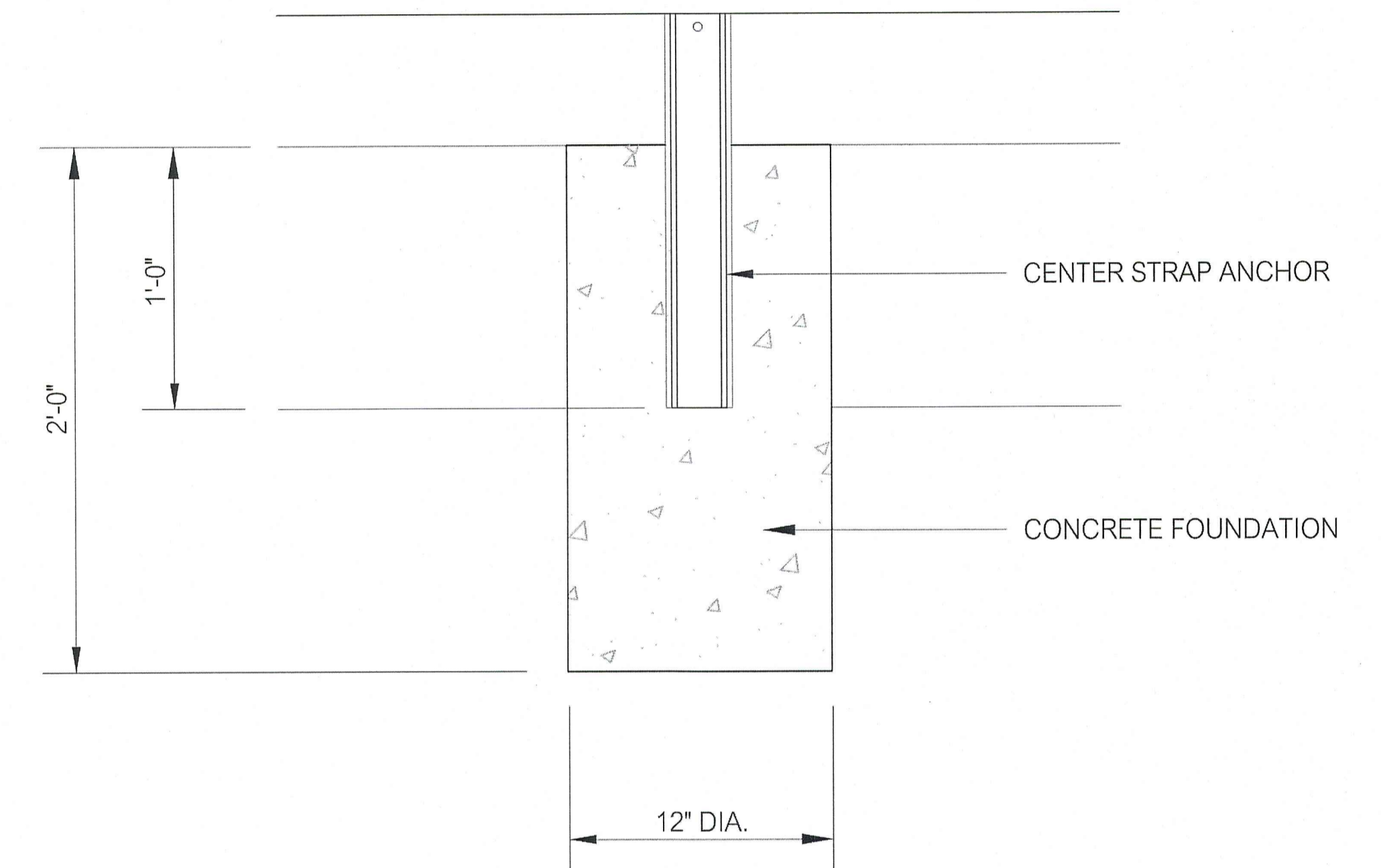
ELEVATION

DOUBLE LEAF CHAIN LINK FENCE SWING GATE  
NOT TO SCALE

NOTES:  
1. CHAIN LINK FABRIC, POSTS, RAILS, FITTINGS AND FASTENERS SHALL BE POLYVINYL CHLORIDE (PVC) COATED, COLOR-BLACK.  
2. PROVIDE GATE LATCH AND ARRANGE FOR PADLOCK AT ALL GATE LOCATIONS.  
3. SINGLE LEAF GATES SHALL BE 4' CLEAR OPENINGS

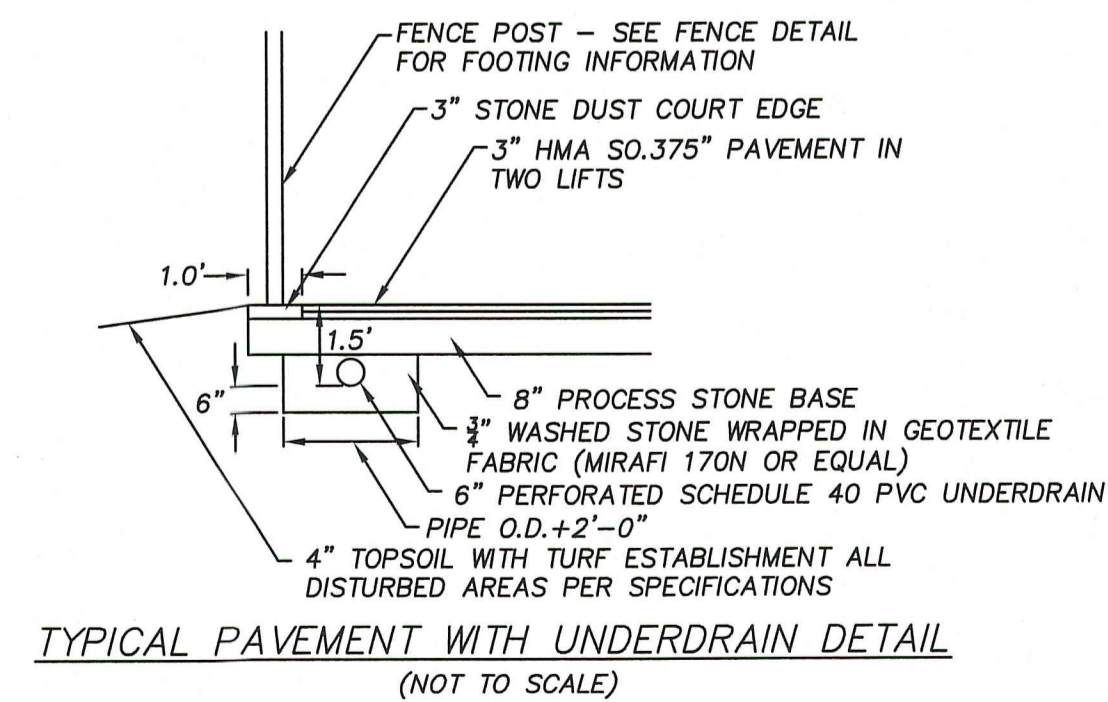


PLAN

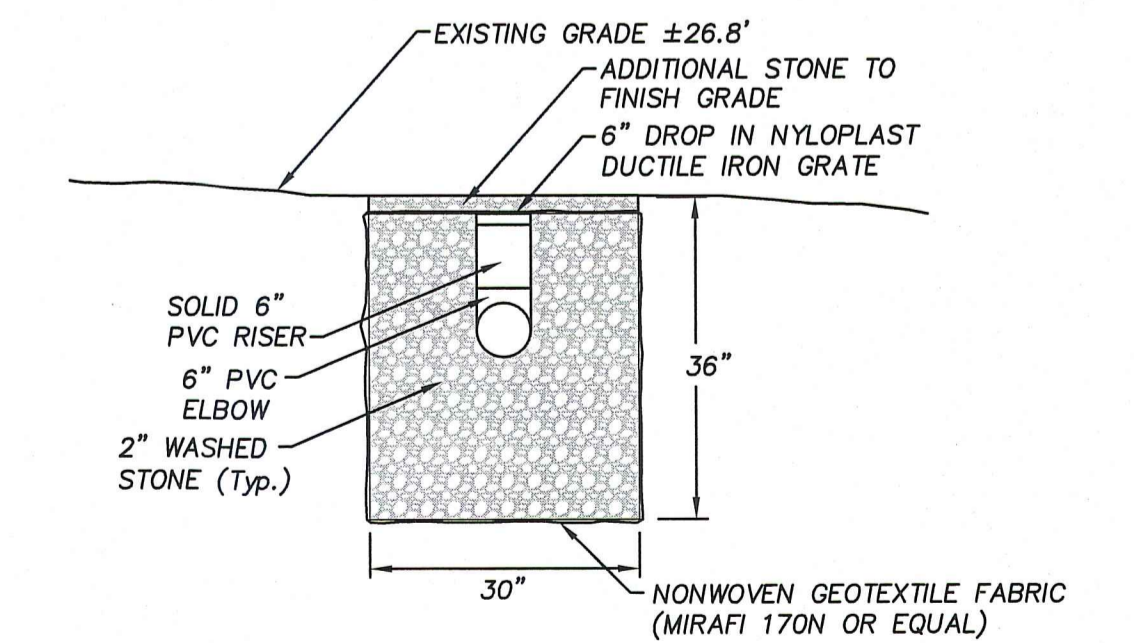


SECTION

NET CENTER STRAP ANCHOR  
1"=1'-0"



TYPICAL PAVEMENT WITH UNDERDRAIN DETAIL  
(NOT TO SCALE)



STONE INFILTRATION TRENCH  
(NOT TO SCALE)

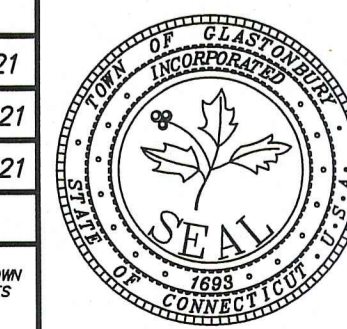
Certified to be substantially correct



DANIEL A. PENNINGTON P.E. Reg. No. 20101

DRAWING ISSUE STATUS		SCALE: AS SHOWN	DATE:
		DRAWN BY: S.Troy	5/7/2021
		CHECKED BY: S.M.B.	6/14/2021
		APPROVED BY: D.A.P.	6/14/2021
2.	ISSUED FOR CONSTRUCTION	7-28-2021	ST. FILE:
1.	ISSUED FOR PERMITTING	6/14/2021	
NO.	DESCRIPTION	DATE	

P.W. 2109



DETAILS DEPICTING  
PICKLEBALL COURTS  
LOCATED AT  
RIVERFRONT COMMUNITY CENTER  
300 WELLES STREET  
GLASTONBURY, CONNECTICUT

SHEET NO.

2  
OF 2