

WORK WITHIN THIS AREA IS BASE BID #3.

**A1 PARTIAL PLAN - BUILDING SOUTH SIDE**  
SCALE: 1/4" = 1'-0"

ADDENDUM #1

PROJ. MANAGER:		
CHIEF DESIGNER:		
REVIEWED BY:	DATE	
No.	DATE	DESCRIPTION
		BY
REVISIONS		

SCALE:	
HORZ:	1" = 1'
VERT:	
DATUM:	
HORZ:	
VERT:	
GRAPHIC SCALE	

WWW.FandO.COM

**FUSS & O'NEILL**  
*Discipline to Deliver*

146 HARTFORD RD MANCHESTER, CT 06040 860.646.2469

TOWN OF GLASTONBURY  
EMERGENCY POWER SYSTEM  
BOILER ROOM SOUTH SIDE  
GLASTONBURY HIGH SCHOOL

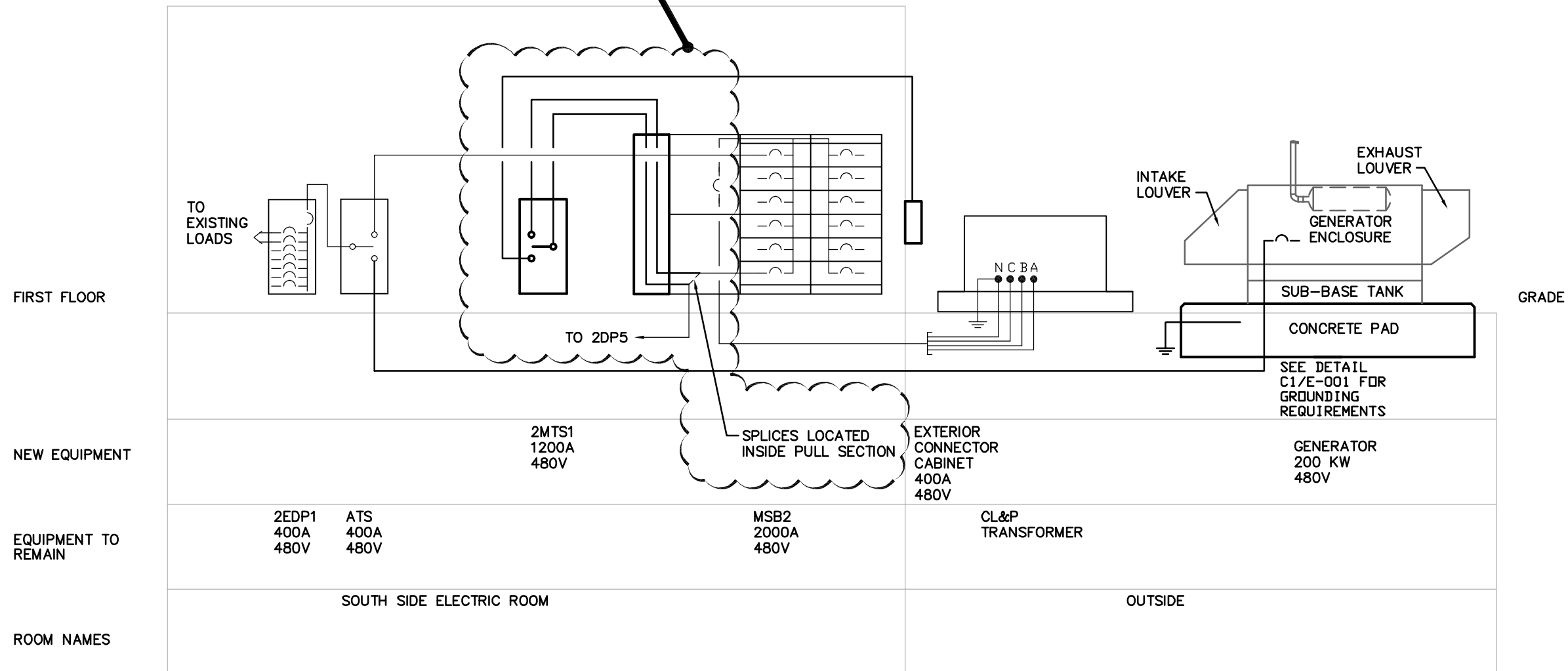
GLASTONBURY CONNECTICUT

PROJ. No.: 20081205.A10  
DATE: 11/5/2009

**SK-E102.1**

WORK WITHIN THIS AREA IS BASE BID #3.

WORK ON THIS DRAWING IS BASE BID #2 EXCEPT WHERE NOTED.



FIRST FLOOR

NEW EQUIPMENT

EQUIPMENT TO REMAIN

ROOM NAMES

2MTS1  
1200A  
480V

SPLICES LOCATED  
INSIDE PULL SECTION

EXTERIOR  
CONNECTOR  
CABINET  
400A  
480V

CL&P  
TRANSFORMER

GENERATOR  
200 KW  
480V

2EDP1  
400A  
480V

ATS  
400A  
480V

MSB2  
2000A  
480V

SOUTH SIDE ELECTRIC ROOM

OUTSIDE

GRADE

**(A1) PARTIAL RISER DIAGRAM**  
NTS


ADDENDUM #1

UCS: LMS VIEW: LMAN: CTB:

PROJ. MANAGER:			
CHIEF DESIGNER:			
REVIEWED BY:	DATE		
No.	DATE	DESCRIPTION	BY
REVISIONS			

SCALE:	
HORZ.:	1" = 1'
VERT.:	
DATUM:	
HORZ.:	
VERT.:	
GRAPHIC SCALE	

WWW.FandO.COM



**FUSS & O'NEILL**  
*Disciplines to Deliver*

146 HARTFORD RD    MANCHESTER, CT 06040    860.646.2469

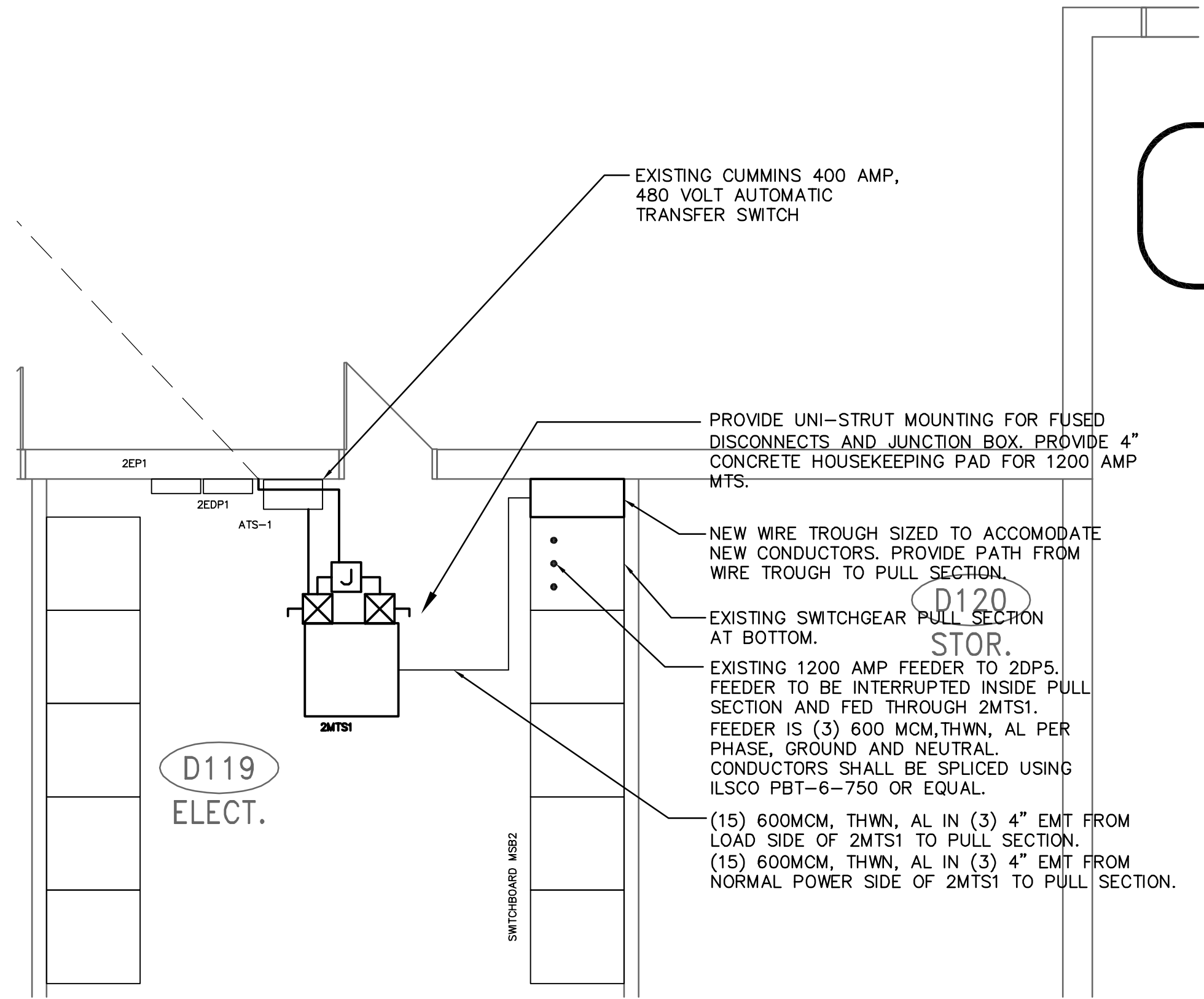
TOWN OF GLASTONBURY  
EMERGENCY POWER SYSTEM  
BOILER ROOM SOUTH SIDE  
GLASTONBURY HIGH SCHOOL

GLASTONBURY    CONNECTICUT

PROJ. No.: 20081205.A10  
DATE: 11/5/2009

**SK-E102.2**

WORK ON THIS DRAWING IS BASE BID #4.



**(A1) PARTIAL PLAN - BUILDING SOUTH SIDE**  
SCALE: 1/4" = 1'-0"

ADDENDUM #1

LUCS: MS VIEW: LUMAN: CTB:

PROJ. MANAGER:			
CHIEF DESIGNER:			
REVIEWED BY:	DATE		
No.	DATE	DESCRIPTION	BY
REVISIONS			


SCALE:	
HORIZ:	1" = 1'
VERT:	
DATUM:	
HORIZ:	
VERT:	
GRAPHIC SCALE	

WWW.FandO.COM

**FUSS & O'NEILL**  
*Discipline to Deliver*

146 HARTFORD RD    MANCHESTER, CT 06040    860.646.2469

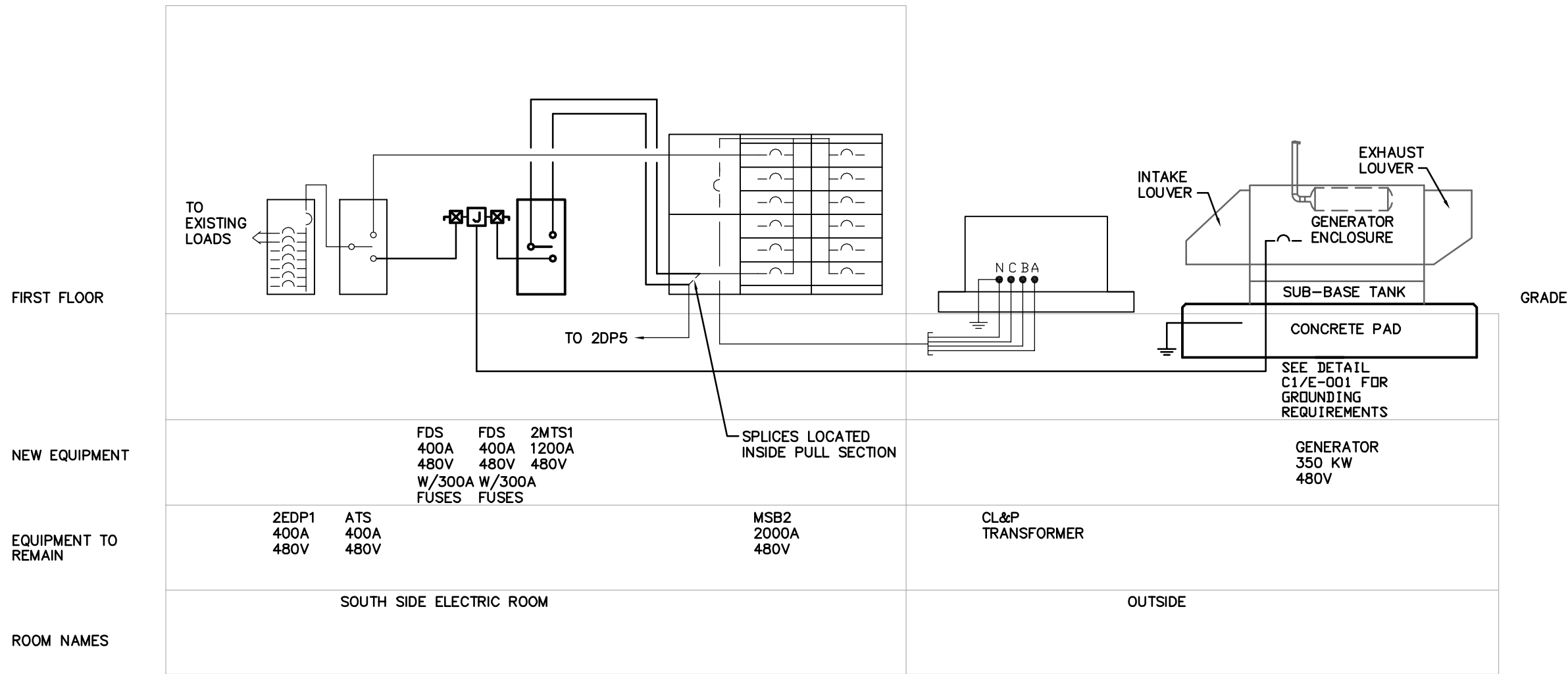
TOWN OF GLASTONBURY  
EMERGENCY POWER SYSTEM  
BOILER ROOM SOUTH SIDE  
GLASTONBURY HIGH SCHOOL

GLASTONBURY    CONNECTICUT

PROJ. No.: 20081205.A10  
DATE: 11/5/2009

**SK-E103.1**

WORK ON THIS DRAWING IS BASE BID #4.



FIRST FLOOR							
NEW EQUIPMENT	FDS 400A 480V W/300A FUSES	FDS 400A 480V FUSES	2MTS1 1200A 480V FUSES	SPLICES LOCATED INSIDE PULL SECTION	CL&P TRANSFORMER	GENERATOR 350 KW 480V	
EQUIPMENT TO REMAIN	2EDP1 400A 480V	ATS 400A 480V		MSB2 2000A 480V			
ROOM NAMES	SOUTH SIDE ELECTRIC ROOM			OUTSIDE			

**A4** PARTIAL RISER DIAGRAM  
NTS

ADDENDUM #1

LUCS: MS VIEW: LMAN: CTB:

PROJ. MANAGER:			
CHIEF DESIGNER:			
REVIEWED BY:	DATE		
No.	DATE	DESCRIPTION	BY
REVISIONS			

SCALE:	HORIZ: 1" = 1'
	VERT: 1" = 1'
DATUM:	HORIZ: 1" = 1'
	VERT: 1" = 1'
GRAPHIC SCALE	

WWW.FandO.COM

**FUSS & O'NEILL**  
*Discipline to Deliver*

146 HARTFORD RD    MANCHESTER, CT 06040    860.646.2469

TOWN OF GLASTONBURY  
EMERGENCY POWER SYSTEM  
BOILER ROOM SOUTH SIDE  
GLASTONBURY HIGH SCHOOL

GLASTONBURY    CONNECTICUT

PROJ. No.: 20081205.A10  
DATE: 11/5/2009

**SK-E103.2**