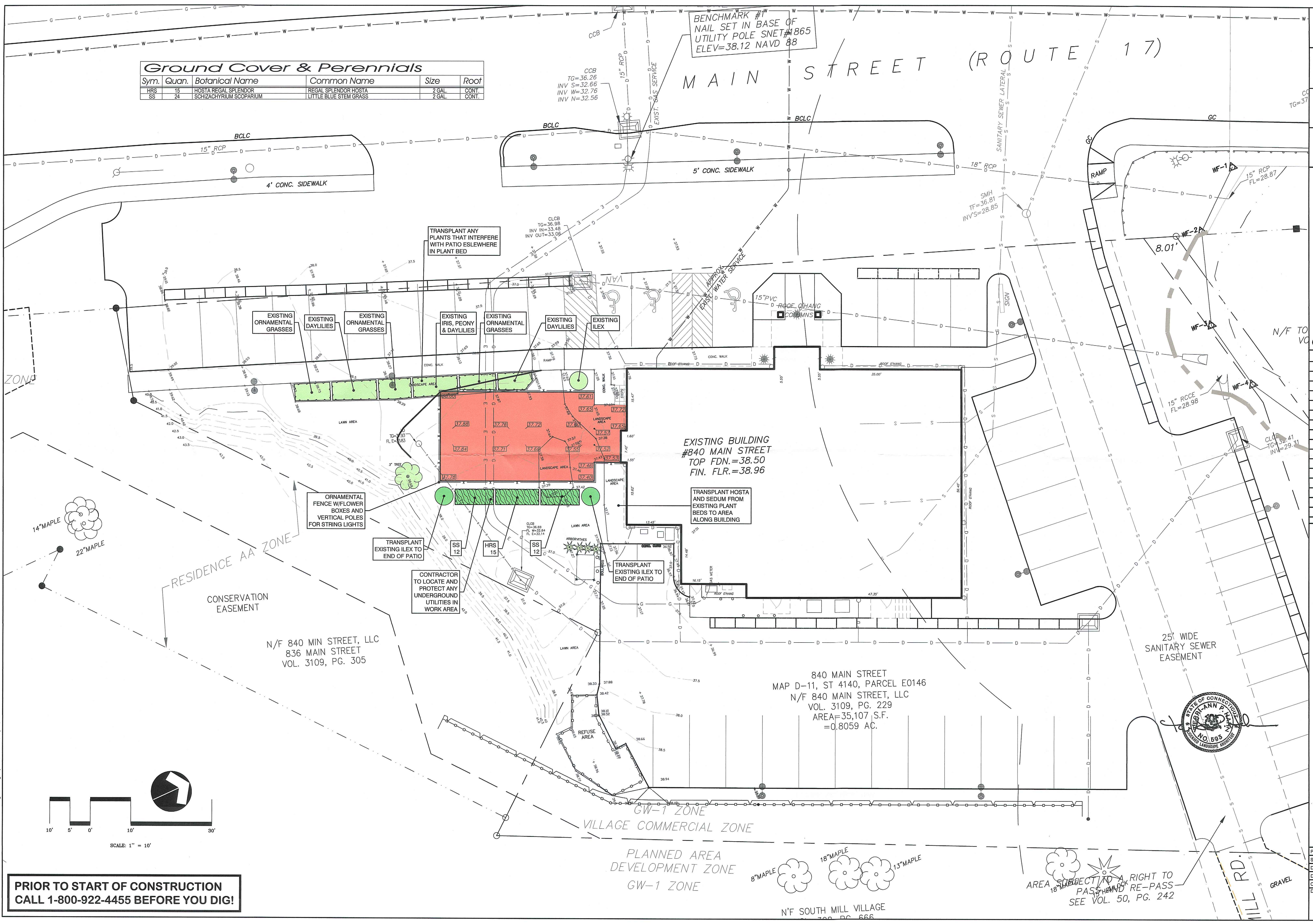


Ground Cover & Perennials

Sym.	Quan.	Botanical Name	Common Name	Size	Roof
HRS	15	HOSTA REGAL SPLENDOR	REGAL SPLENDOR HOSTA	2 GAL.	CONT.
SS	24	SCHIZACHYRIUM SCOPARIUM	LITTLE BLUE STEM GRASS	2 GAL.	CONT.

BENCHMARK #1
NAIL SET IN BASE OF
UTILITY POLE SNET #1865
ELEV=38.12 NAVD 88

MAIN STREET (ROUTE 17)



Owner: 840 Main Street LLC
491 Foote Road
S. Glastonbury, CT 06073

Applicant: Same as Owner

Date	Description	No.
Revisions		

Planting Plan
Cotton Hollow Kitchen
840 Main Street
South Glastonbury, CT

Project: 2328
Scale: 1" = 10'
Date: 05/20/21
Drawn by: DFM
Checked by: TPH
Drawing No. L-1

**PRIOR TO START OF CONSTRUCTION
CALL 1-800-922-4455 BEFORE YOU DIG!**

C:\C:\P\2328 Cotton Hollow Kitchen\DWG\2328 Planting Plan.dwg (Layout) (Landscape) May 20, 2021