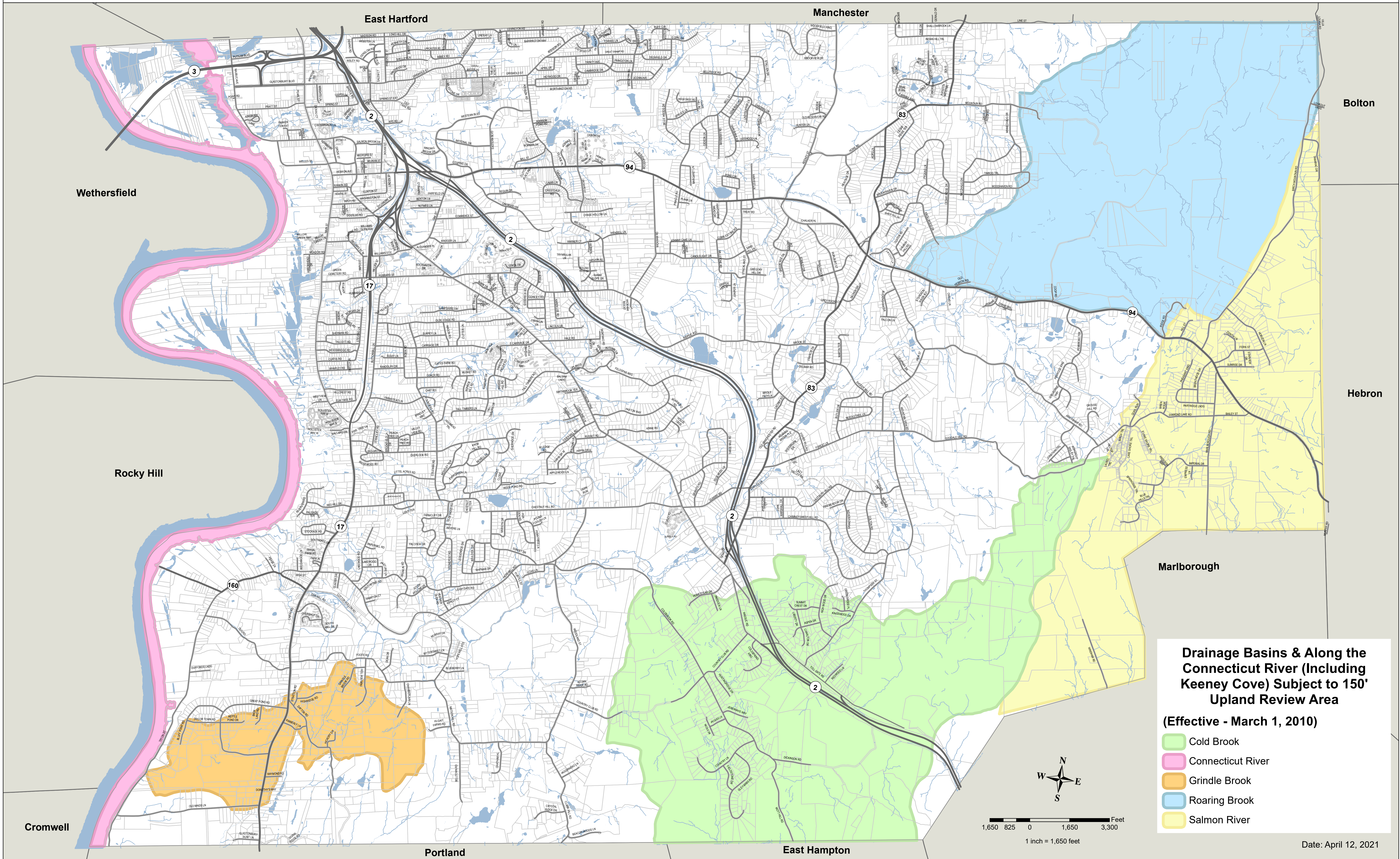




Town of Glastonbury - Inland Wetlands and Watercourse Regulations



Drainage Basins & Along the Connecticut River (Including Keeney Cove) Subject to 150' Upland Review Area
 (Effective - March 1, 2010)

- Cold Brook
- Connecticut River
- Grindle Brook
- Roaring Brook
- Salmon River



1,650 825 0 1,650 3,300 Feet
 1 inch = 1,650 feet

Date: April 12, 2021