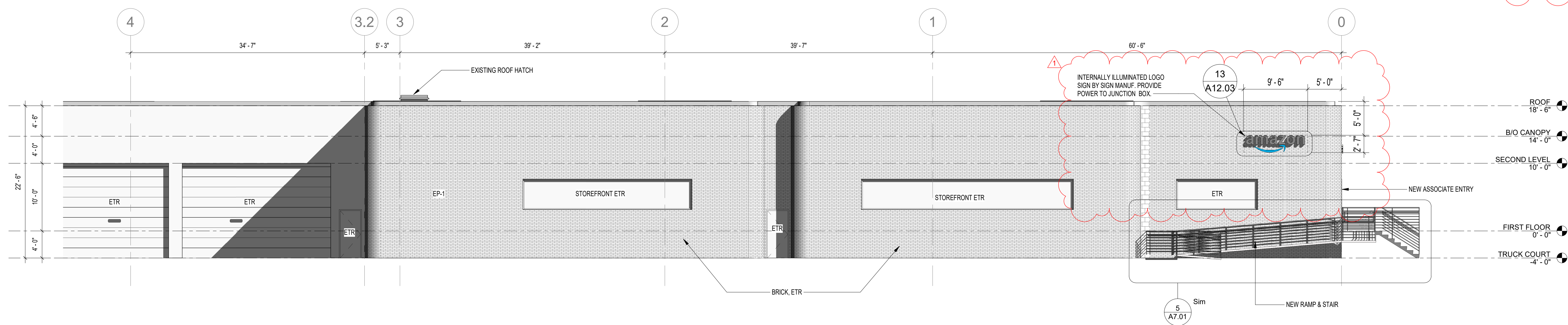


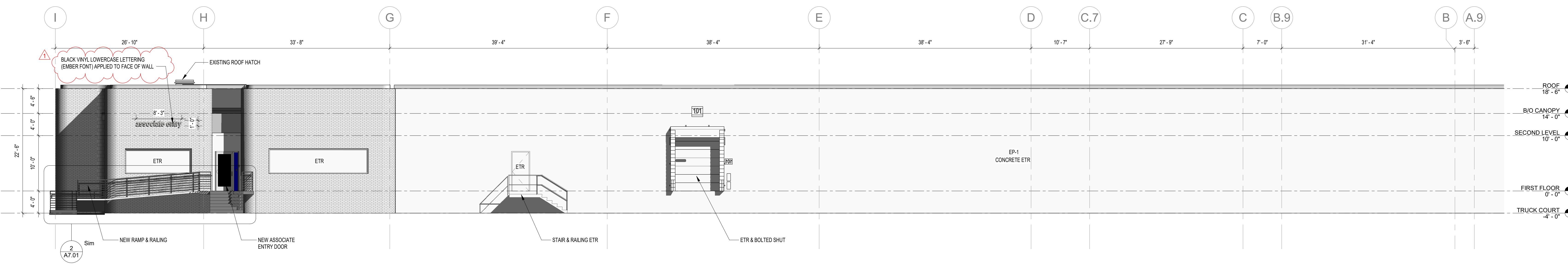


1 PARTIAL SOUTH ELEVATION A  
1/8" = 1'-0"

EXTERIOR OF THE BUILDING TO BE RE-PAINTED IN AREAS WHERE LEAD PAINT WAS REMOVED. NEW PAINT TO MATCH EXISTING ADJACENT PAINT.



2 PARTIAL SOUTH ELEVATION B  
1/8" = 1'-0"



3 PARTIAL EAST ELEVATION  
1/8" = 1'-0"

NO.	DATE	DESCRIPTION
1	2/11/2021	Rev1

Designed: Designer  
Drawn: Author  
Reviewed: Approver  
Scale: 1/8" = 1'-0"  
Project No. 2000669  
Date: 08/28/2020

Title:  
EXTERIOR ELEVATIONS  
Sheet No.

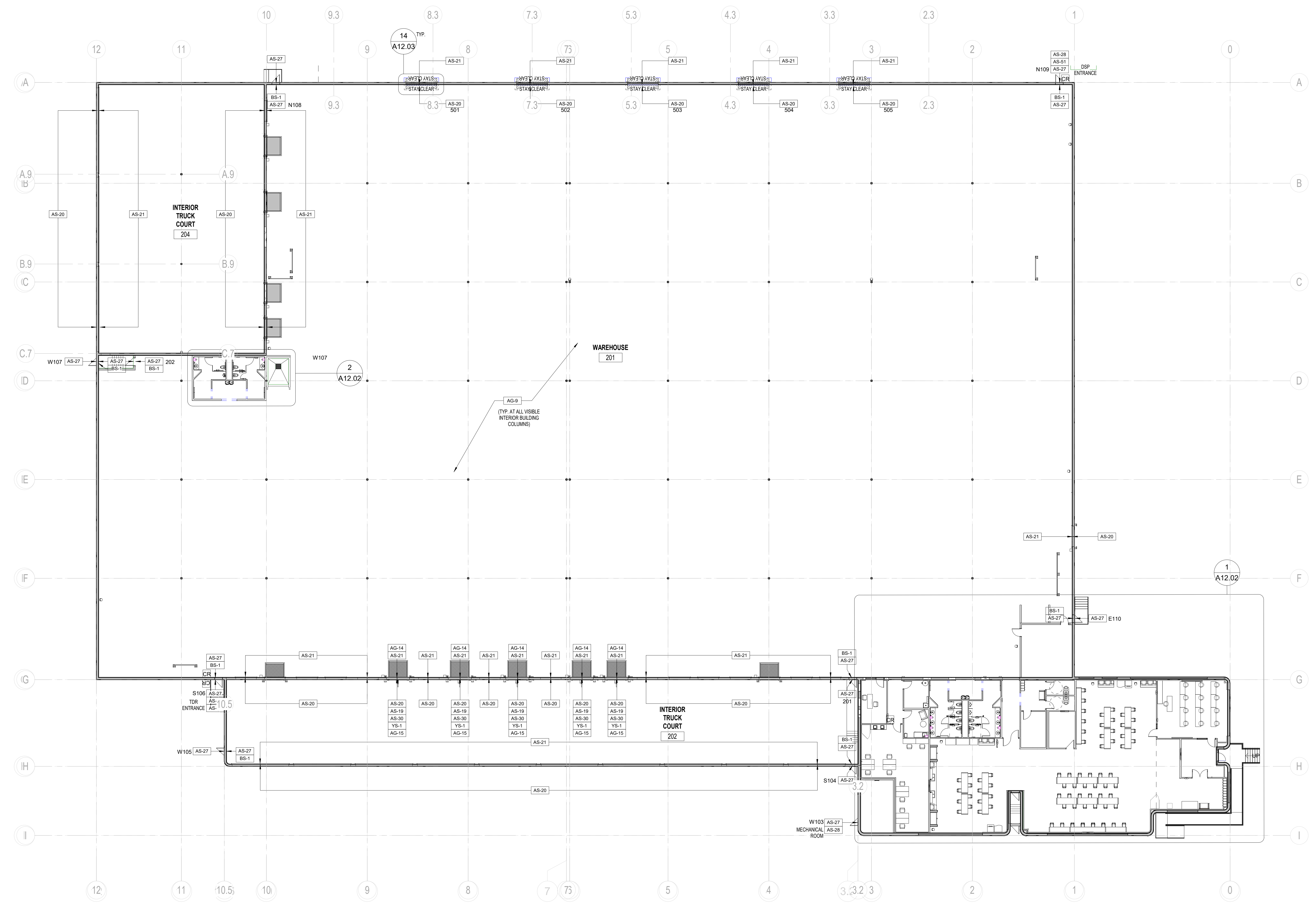
A5.02

NO	DATE	DESCRIPTION
DESIGNED	CN	
DRAWN	JS/MES	
REVIEWED	KD	
SCALE	1/16" = 1'-0"	
PROJECT NO.	2000669	
DATE	08/28/2020	

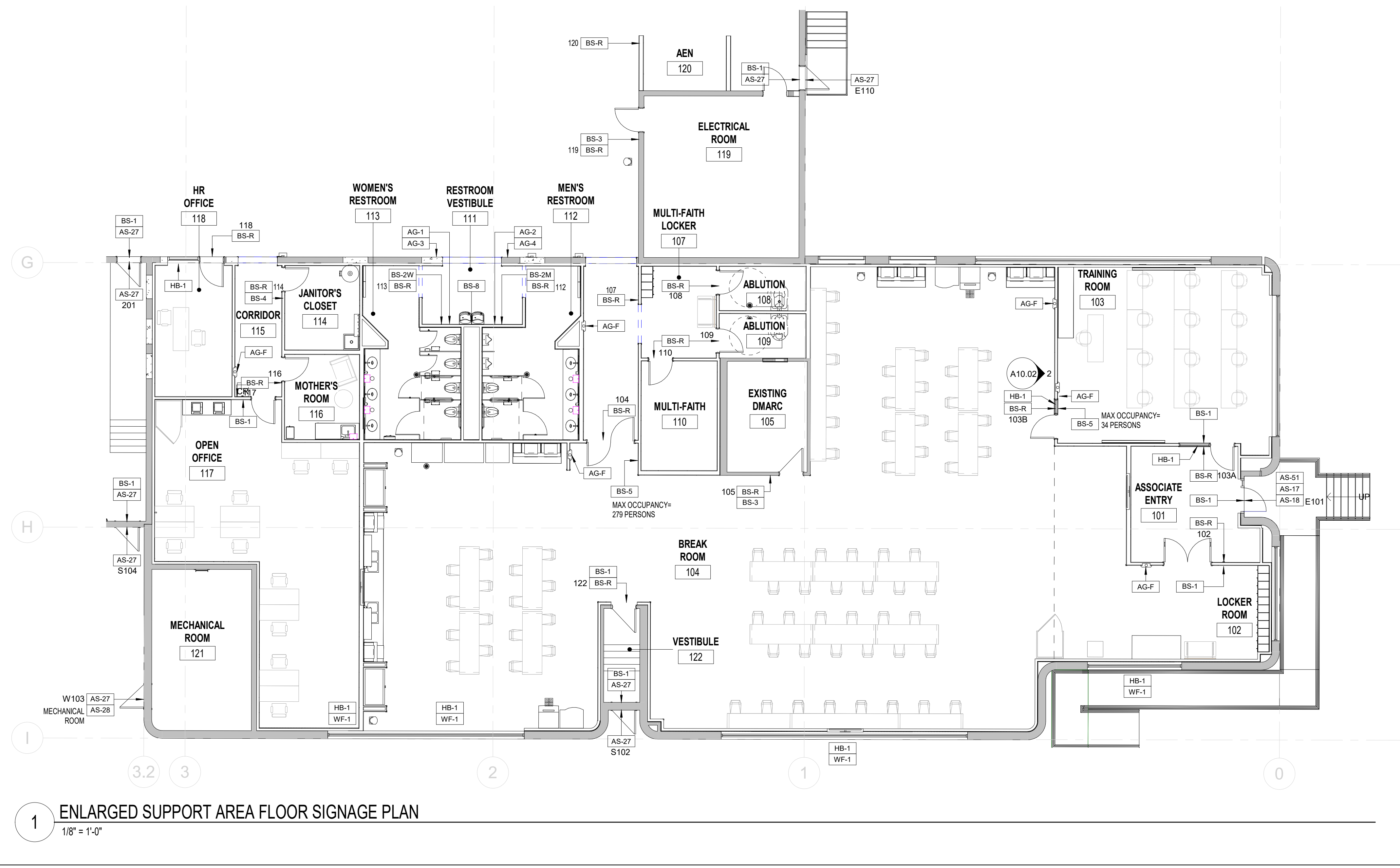
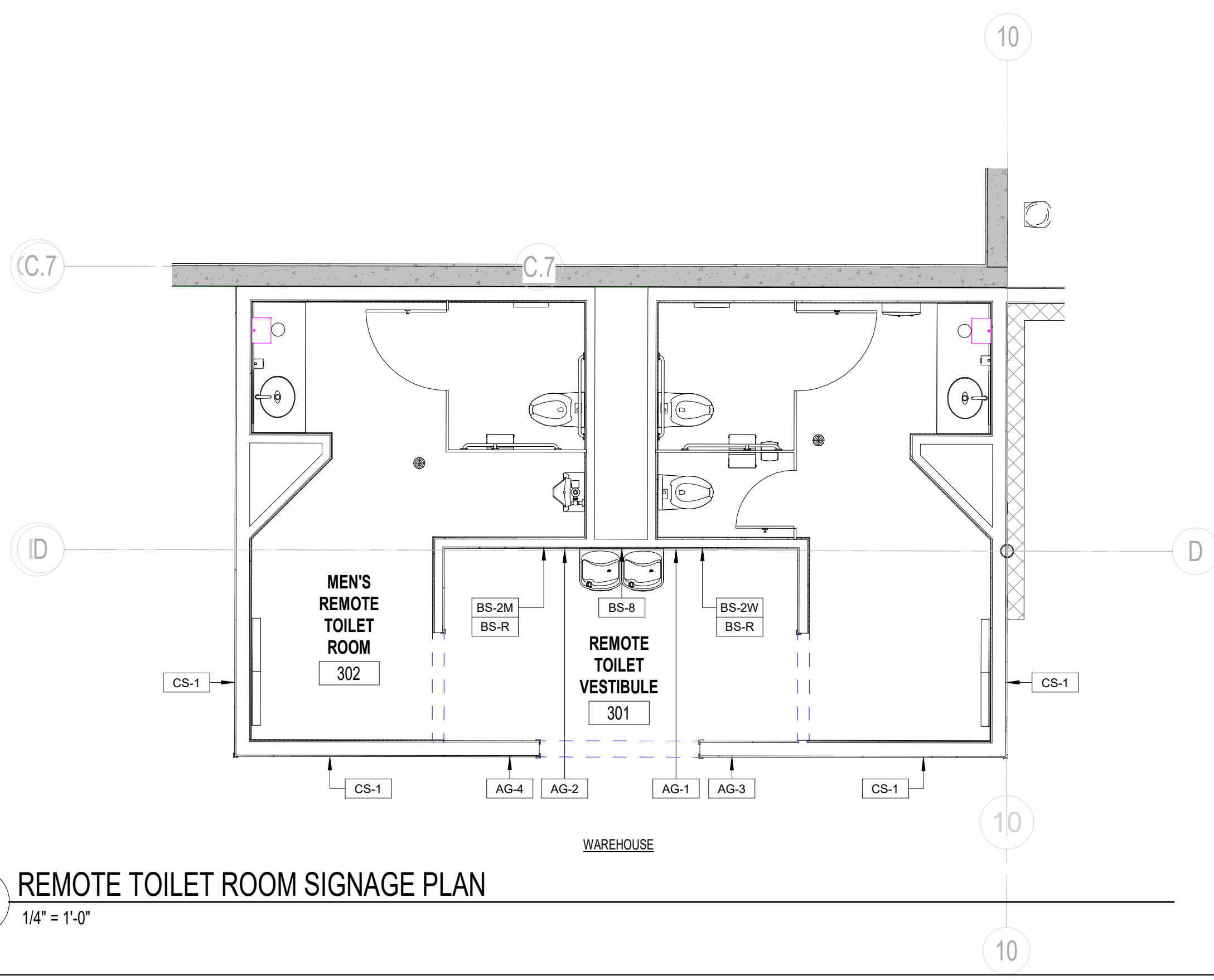
OVERALL SIGNAGE  
PLAN

Sheet No.

A12.01



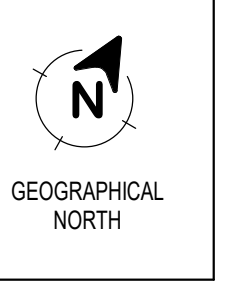
1 OVERALL SIGNAGE PLAN  
1/16" = 1'-0"

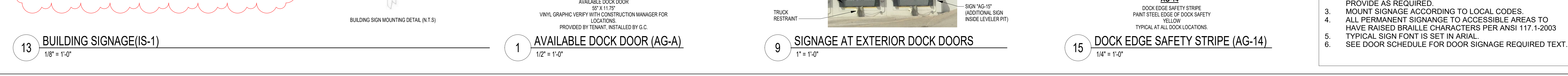
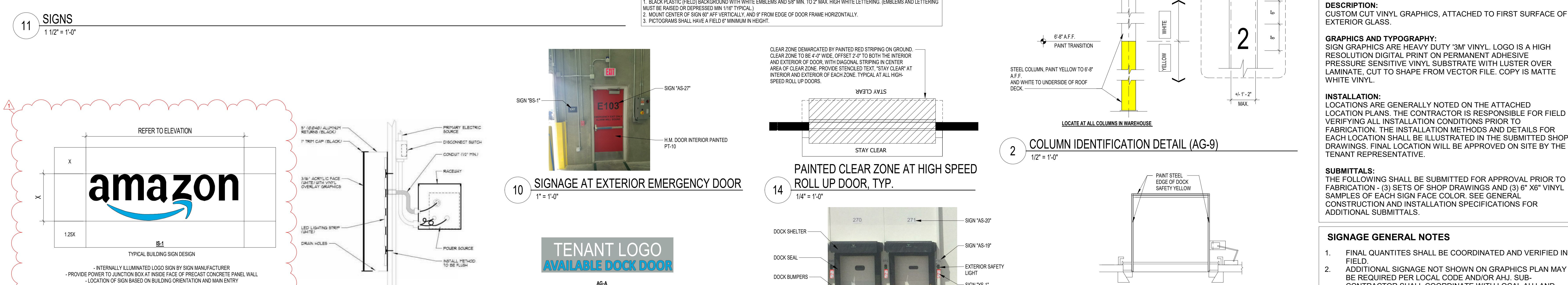
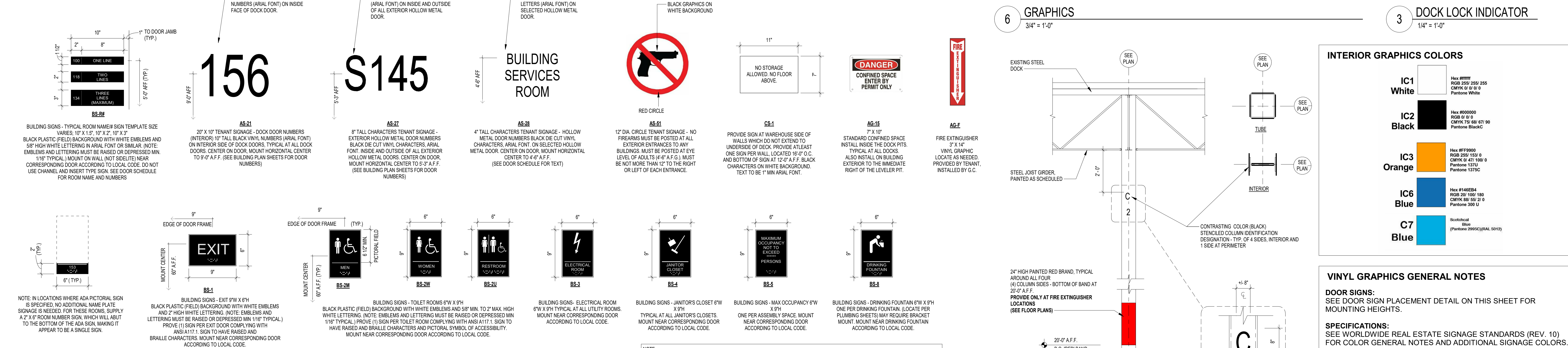
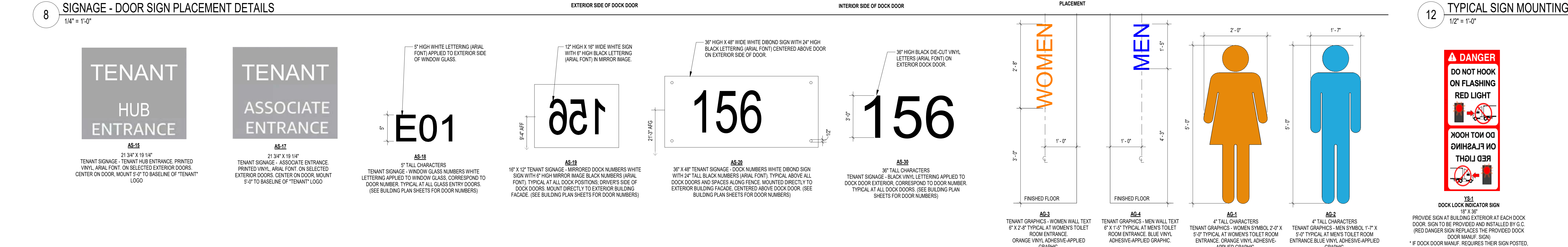
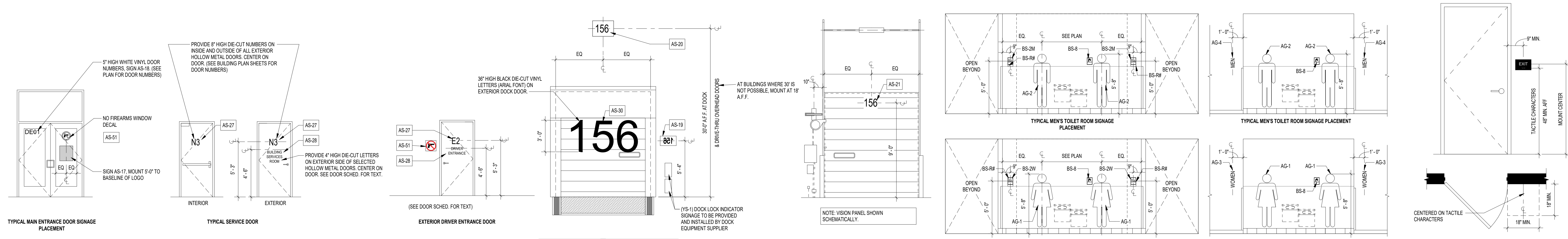


3/17/2021 10:26:06 AM C:\Users\B\_Smith\Documents\2006669-DOB7-RI-ARCH-Central\_bsmnoff.rvt

NO	DATE	DESCRIPTION

Designed: Designer  
Drawn: Author  
Reviewed: Approver  
Scale: As Indicated  
Project No. 2006669  
Date: 08/28/2020





### CDS2015-4-C DESIGN NOTES

THE STANDARD CDS2015-4-C CONFIGURATION IS SHOWN. ALTERNATE CONFIGURATIONS ARE AVAILABLE AND ARE LISTED BELOW. SOME CONFIGURATIONS MAY BE COMBINED TO SUIT SITE REQUIREMENTS.

CONFIGURATION DESCRIPTION	
GRATED INLET ONLY (NO INLET PIPE)	
GRATED INLET WITH INLET PIPE OR PIPES	
CURB INLET ONLY (NO INLET PIPE)	
CURB INLET WITH INLET PIPE OR PIPES	
SEPARATE OIL BAFFLE (SINGLE INLET PIPE REQUIRED FOR THIS CONFIGURATION)	
SEDIMENT WEIR FOR NJDEP / NJCAT CONFORMING UNITS	

**PLAN VIEW B-B**  
N.T.S.

SITE SPECIFIC DATA REQUIREMENTS		
STRUCTURE ID		
WATER QUALITY FLOW RATE (CFS OR L/S)		
PEAK FLOW RATE (CFS OR L/S)		
RETURN PERIOD OF PEAK FLOW (YRS)		
SCREEN APERTURE (2400 OR 4700)		
PIPE DATA	I.E.	MATERIAL DIAMETER
INLET PIPE 1		
INLET PIPE 2		
OUTLET PIPE		
RIM ELEVATION		
ANTI-FLOTATION BALLAST	WIDTH	HEIGHT
NOTES/SPECIAL REQUIREMENTS:		
* PER ENGINEER OF RECORD		

**ELEVATION A-A**  
N.T.S.

**FRAME AND COVER**  
(DIAMETER VARIES)  
N.T.S.

**GENERAL NOTES**

- CONTECH TO PROVIDE ALL MATERIALS UNLESS NOTED OTHERWISE.
- DIMENSIONS MARKED WITH ( ) ARE REFERENCE DIMENSIONS. ACTUAL DIMENSIONS MAY VARY.
- FOR FABRICATION DRAWINGS WITH DETAILED STRUCTURE DIMENSIONS AND WEIGHTS, PLEASE CONTACT YOUR CONTECH ENGINEERED SOLUTIONS LLC REPRESENTATIVE: [www.contechES.com](http://www.contechES.com)
- CDS WATER QUALITY STRUCTURE SHALL BE IN ACCORDANCE WITH ALL DESIGN DATA AND INFORMATION CONTAINED IN THIS DRAWING.
- STRUCTURE SHALL MEET ASDHQ HSDG AND CASTINGS SHALL MEET HSDG (ASB210 M 300) LOAD RATING, ASSUMING GROUNDWATER ELEVATION AT, OR BELOW, THE OUTLET PIPE INVERT ELEVATION. ENGINEER OF RECORD TO CONFIRM ACTUAL GROUNDWATER ELEVATION.
- PVC HYDRAULIC SHEAR PLATE IS PLACED ON SHELF AT BOTTOM OF SCREEN CYLINDER. REMOVE AND REPLACE AS NECESSARY DURING MAINTENANCE CLEANING.

**INSTALLATION NOTES**

- ANY SUB-BASE, BACKFILL DEPTH, AND/OR ANTI-FLOTATION PROVISIONS ARE SITE-SPECIFIC DESIGN CONSIDERATIONS AND SHALL BE SPECIFIED BY ENGINEER OF RECORD.
- CONTRACTOR TO PROVIDE EQUIPMENT WITH SUFFICIENT LIFTING AND REACH CAPACITY TO LIFT AND SET THE CDS MANHOLE STRUCTURE (LIFTING CLUTCHES PROVIDED).
- CONTRACTOR TO ADD JOINT SEALANT BETWEEN ALL STRUCTURE SECTIONS, AND ASSEMBLE STRUCTURE.
- CONTRACTOR TO PROVIDE, INSTALL, AND GROUT PIPES. MATCH PIPE INVERTS WITH ELEVATIONS SHOWN.
- CONTRACTOR TO TAKE APPROPRIATE MEASURES TO ASSURE UNIT IS WATER TIGHT, HOLDING WATER TO FLOWLINE INVERT MINIMUM. IT IS SUGGESTED THAT ALL JOINTS BELOW PIPE INVERTS ARE GROUTED.

**CONTECH ENGINEERED SOLUTIONS LLC**  
www.contechES.com  
9025 Centre Pointe Dr., Suite 400, West Chester, OH 45399  
800-338-1122 613-645-7000 613-645-7093 FAX

CDS2015-4-C  
INLINE CDS  
STANDARD DETAIL

### HYDRODYNAMIC SEPARATOR (CB-202 (TYPE C-HDS))

N.T.S.

**MADRAX**

2 # 3/8" STEEL TUBING  
# 7 ROUND FLANGE

MURAX DIVISION  
GRABER MANUFACTURING, INC.  
180 INKER DRIVE  
WALMADE, VT 05297  
P800 448-7501 R800 849-1886 F800 849-1881  
WWW.MURAX.COM E-MAIL SALES@MURAX.COM

186 1/8"  
9 7/8"  
42"  
51 1/2"  
91 7/8"  
183 3/4"  
15 LOOP - 17 BIKE

CHECK DESIRED MOUNT

ANCHOR ROD IN GROUND MOUNT (GD)

3/8" THICK MILD STEEL WITH # 9/16" HOLE OR 1/4" THICK STAINLESS WITH # 7/16" HOLE  
SPIKE IN CONCRETE

ANCHOR ROD SURFACE FLANGE MOUNT (SF)

PRODUCT: HMC200-17-16(CS)  
DESCRIPTION: HEAVY DUTY WINDER BIKE RACK  
DATE: 10-16-18  
ENG: SNC

CONFIDENTIAL DRAWING AND INFORMATION IS NOT TO BE COPIED OR DISCLOSED TO OTHERS WITHOUT THE CONSENT OF GRABER MANUFACTURING, INC. SPECIFICATIONS ARE SUBJECT TO CHANGE WITHOUT NOTICE.

©2018 GRABER MANUFACTURING, INC. ALL PROPRIETARY RIGHTS RESERVED.

**PREFABRICATED BIKE RACK**

3/8" = 1'-0"

I HEREBY DECLARE TO THE BEST OF MY KNOWLEDGE AND BELIEF THAT THIS PLAN IS SUBSTANTIALLY CORRECT.

*Matthew J. Brufon*

MATTHEW J. BRUFON CT PE # 33356

MOTOR FREIGHT TRANSPORTATION TERMINAL OR GARAGE / WINSTANLEY ENTERPRISES LLC PE (PLANNED EMPLOYMENT) ZONE

107 EASTERN BOULEVARD, GLASTONBURY, CT

SPECIAL PERMIT SECTION TPZ CHAIRMAN

DATE SPECIAL PERMIT APP'D DIRECTOR OF COMMUNITY DEVELOPMENT

FILE NO.

### MONUMENT SIGN

1/2" = 1'-0"

6'-0"  
4'-4"  
5'-4"  
4'-4"  
8"  
5'-0"  
3" TYP.  
1'-0"  
3'-6"  
FROST COVERAGE  
1'-6"  
MIN.  
7'-8"

ALUMINUM SIGN CONSTRUCTION BY SIGN MANUF. CONNECTION TO CONCRETE STEM WALL BY SIGN MANUF.

ALUMINUM DIVIDER BAR (P1) BY SIGN MANUF.

FLAT CUT OUT LETTERS, NUMBERS AND GRAPHICS (P3) BY SIGN MANUF.

NOTE: ORIENTATION OF "ARROWS" SHALL BE BASED ON MONUMENT SIGN LOCATION.

PROVIDE CAST IN PLACE CONCRETE STEM WALL AND CONCRETE FOOTING

(2) 3/4" X 54" ANCHOR BOLTS. VERIFY W/SIGN MFG'R.

### UNDERGROUND DETENTION OUTLET CONTROL STRUCTURE 2 (OCS-221)

N.T.S.

UNDERGROUND STORMWATER MANAGEMENT SYSTEM #2

STONE BASE WITH UNDERDRAIN  
PROVIDE AND INSTALL IMPERMEABLE LINER

SEE PLANS FOR DISTANCE

INLET PIPE

APPROXIMATE LOCATION OF 6" UNDERDRAIN CONNECTION TO OCS STRUCTURE. INV=64.40'

2'-2"  
WEIR  
6" INSIDE DIA. PRECAST CONCRETE MH SECTIONS  
8" WIDE MIN. CONC. WALL  
ORIFICE 1  
24" RCP DISCHARGE PIPE

MANHOLE FRAME & COVER

ADJUST TO GRADE WITH CONCRETE GRADE RINGS TWO MAXIMUM

WEIR INV=67.65

ORIFICE 1  
16" HIGH X 27" WIDE  
INV=65.90

WEIR WALL FRONT ELEVATION

NOTES:

- SEE PLANS FOR UNDERGROUND DETENTION SYSTEM DETAILS. ALL UNITS TO BE INSTALLED TO THE MANUFACTURERS SPECIFICATIONS.
- UNDERGROUND DETENTION SYSTEM, MANHOLE FRAMES AND COVERS TO BE HS20 QUALIFIED.

### UNDERGROUND DETENTION OUTLET CONTROL STRUCTURE 1 (OCS-102)

N.T.S.

UNDERGROUND STORMWATER MANAGEMENT SYSTEM #1

STONE BASE

SEE PLANS FOR DISTANCE

INLET PIPE

2'-2"  
WEIR  
6" INSIDE DIA. PRECAST CONCRETE MH SECTIONS  
8" WIDE MIN. CONC. WALL  
ORIFICE 1  
15" RCP DISCHARGE PIPE

MANHOLE FRAME & COVER

ADJUST TO GRADE WITH CONCRETE GRADE RINGS TWO MAXIMUM

WEIR INV=72.30

ORIFICE 2  
6" HIGH X 8" WIDE  
INV=71.50

ORIFICE 1  
6" HIGH X 12" WIDE  
INV=69.80

WEIR WALL FRONT ELEVATION

NOTES:

- SEE PLANS FOR UNDERGROUND DETENTION SYSTEM DETAILS. ALL UNITS TO BE INSTALLED TO THE MANUFACTURERS SPECIFICATIONS.
- UNDERGROUND DETENTION SYSTEM, MANHOLE FRAMES AND COVERS TO BE HS20 QUALIFIED.

**FOR PERMITTING PURPOSES ONLY**  
**NOT RELEASED FOR CONSTRUCTION**

2/26/2021 10:45:11 AM C:\PROJECTS\2020\107 EASTERN BOULEVARD\DWG\2020066901.DWG (DN-5) 1:1