

EXTERIOR PAINT COLOR LEGEND

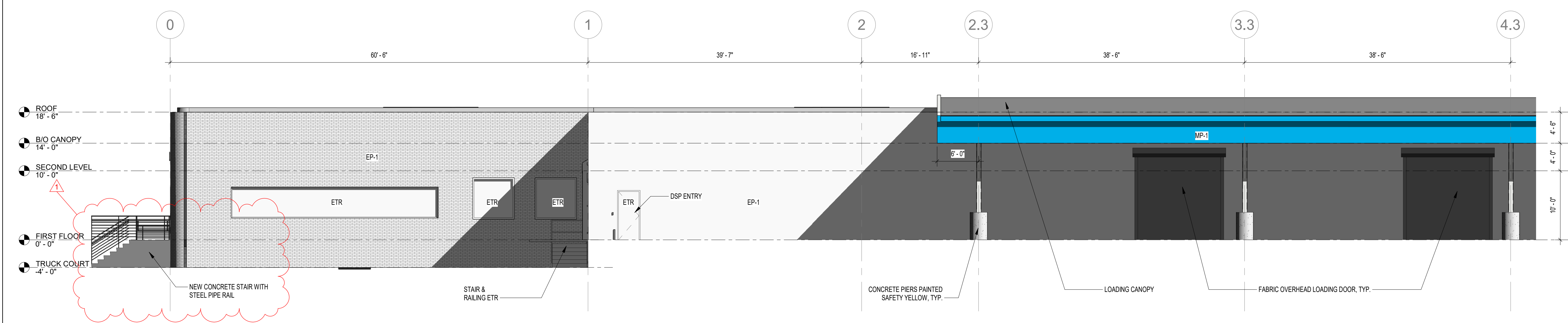
EP-1 SHERWIN WILLIAMS SW 7063 NEBULOUS WHITE	EP-2 SHERWIN WILLIAMS SW 7066 GRAY MATTERS	EP-3 PANTONE 2956C BLUE
MP-1 PANTONE 2956C BLUE	MP-2 PAC-CLAD 'BONE WHITE'	MP-3 PAC-CLAD SLATE GREY

BUILDING ELEMENTS	COLOR
METAL COPING	MP-3 PAC-CLAD SLATE GREY
PREFINISHED METAL GUTTER	COLOR TO MATCH PANTONE 2956C
METAL DOWNSPOUT AND CONDUCTOR HEADS	MP-3 PAC-CLAD SLATE GREY
HOLLOW METAL DOORS AND FRAMES	COLOR TO MATCH MP-3
EXTERIOR METAL RAILINGS, STAIRS AND LANDINGS	GALVANIZED - NO PAINT
LOADING CANOPY SOFFIT	MP-2 PAC-CLAD 'BONE WHITE'
ASSOCIATE ENTRY CANOPY/LOADING CANOPY	MP-1 'TENANT BLUE'
BOLLARDS	SAFETY YELLOW
INTERIOR STAIRS, RAILINGS AND GUARDRAILS	RED / GRAY
ALL EXPOSED METAL STRUCTURE	PT-1

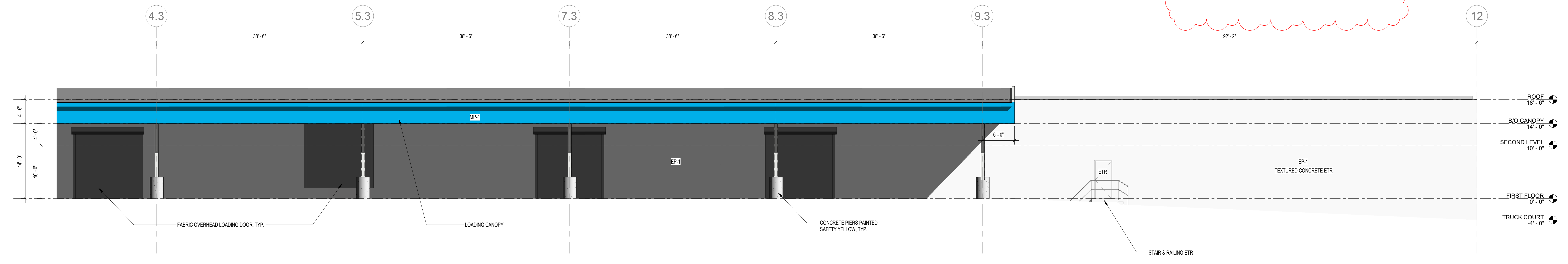
EXTERIOR ELEVATION GENERAL NOTES :

- HOLD ALL VERTICAL DIMENSIONS.
- HORIZONTAL DIMENSIONS OF REVEAL (NOT PANELS) DIMENSIONS CAN BE +/- FOR PANEL CONSTRUCTION.
- FAUX WINDOWS, OVERFLOWS, ETC. SHOULD BE CENTERED OVER DOOR BELOW.
- FOR TYPICAL FAUX WINDOW PANEL DIMENSIONS SEE EXTERIOR ELEVATIONS ON A5.01.
- SEE TYPICAL REVEAL AND PANEL JOINT DETAILS ON G0.02.

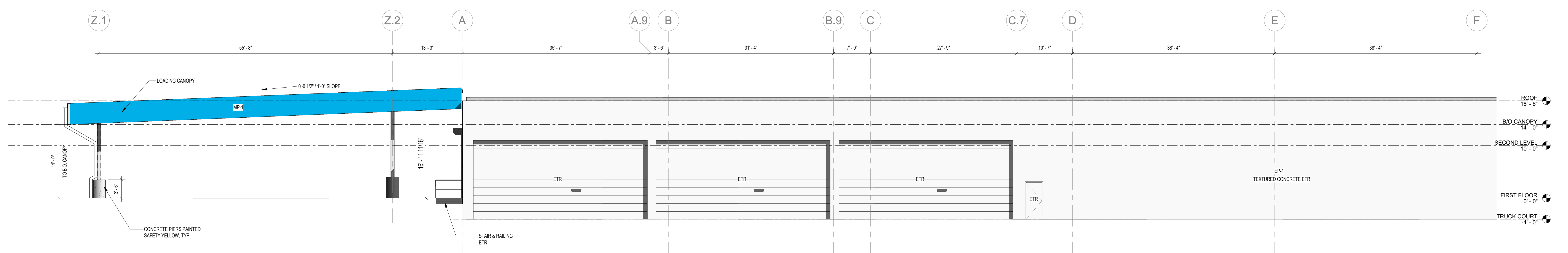
EXTERIOR OF THE BUILDING TO BE RE-PAINTED IN AREAS WHERE LEAD PAINT WAS ABATED. NEW PAINT TO MATCH EXISTING ADJACENT PAINT.



1 PARTIAL NORTH ELEVATION A
1/8" = 1'-0"



2 PARTIAL NORTH ELEVATION B
1/8" = 1'-0"

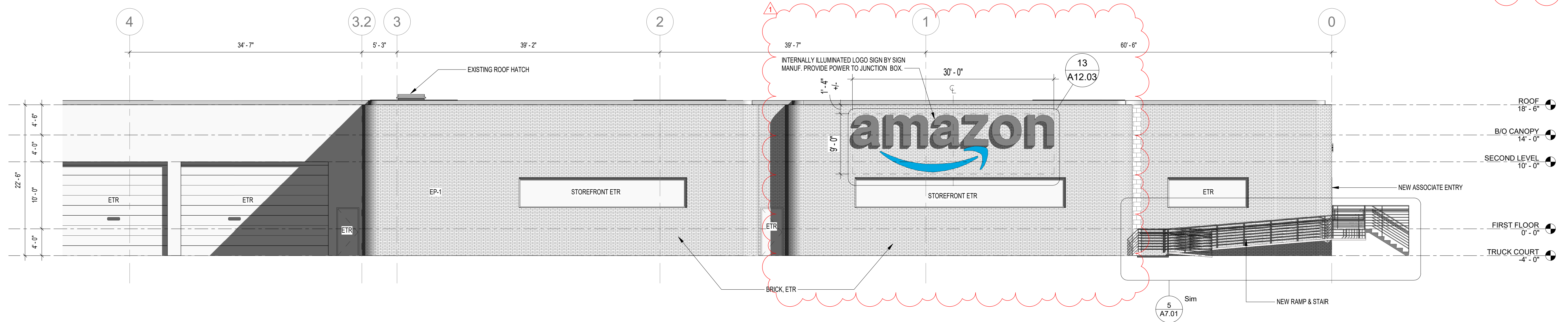


3 PARTIAL WEST ELEVATION
1/8" = 1'-0"

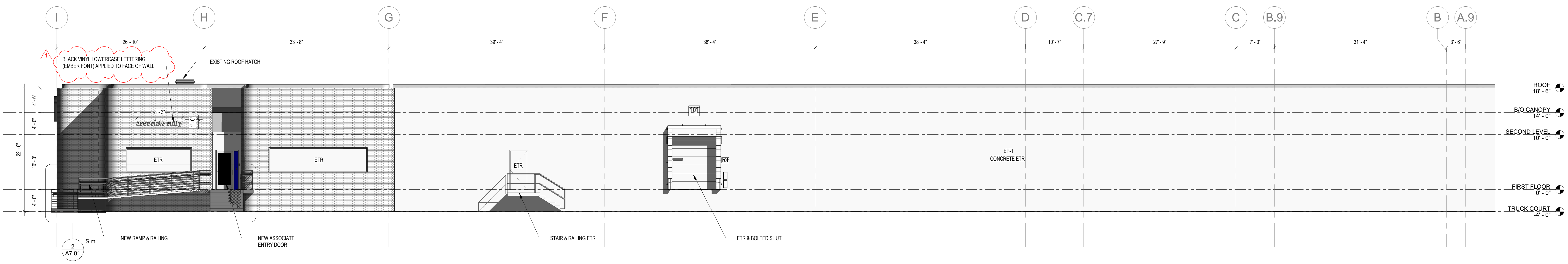


1 PARTIAL SOUTH ELEVATION A
1/8" = 1'-0"

EXTERIOR OF THE BUILDING TO BE RE-PAINTED IN AREAS WHERE LEAD PAINT WAS REMOVED. NEW PAINT TO MATCH EXISTING ADJACENT PAINT.

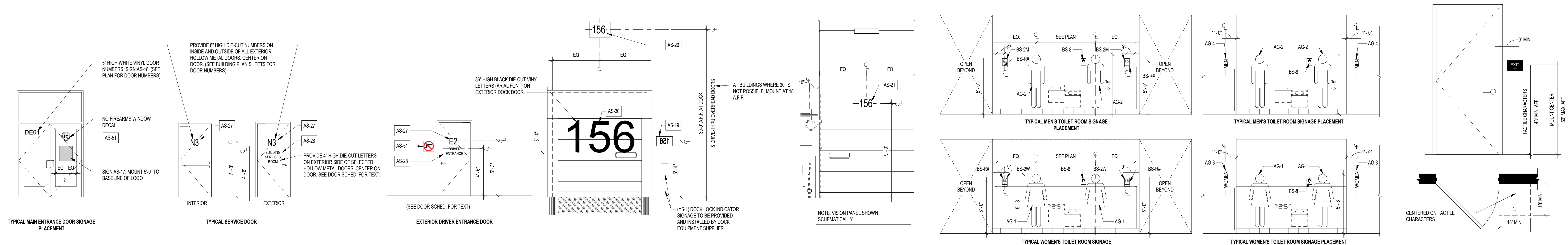


2 PARTIAL SOUTH ELEVATION B
1/8" = 1'-0"

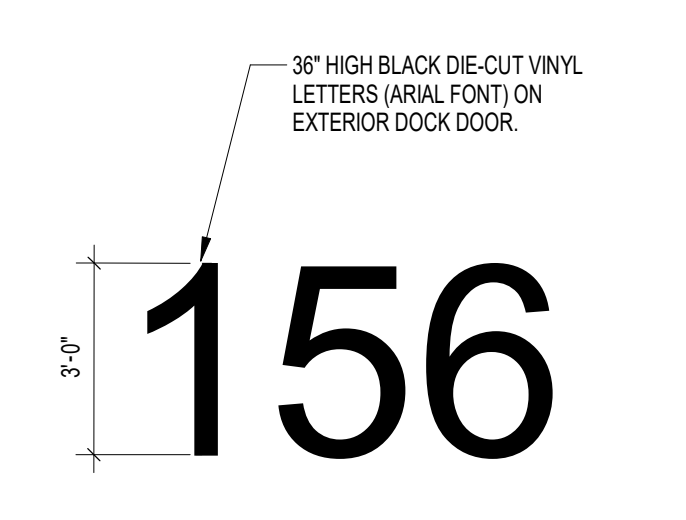
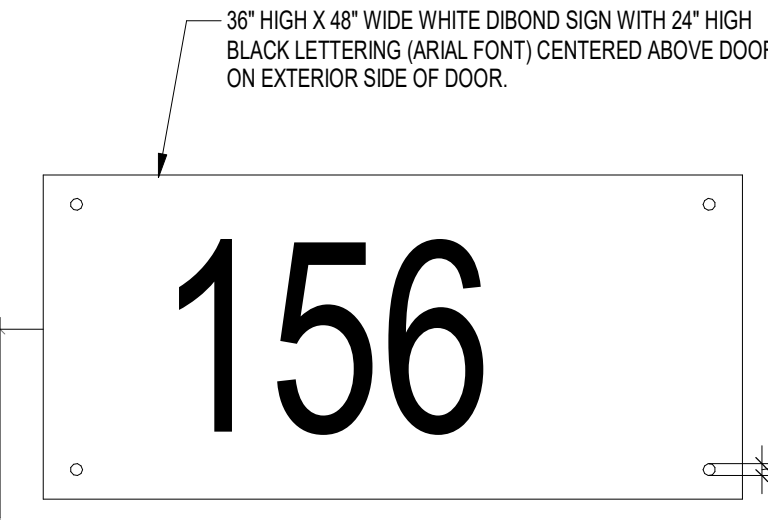
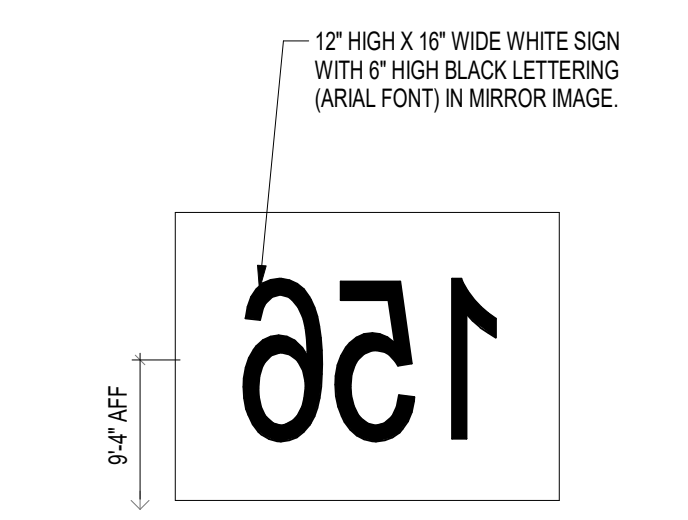
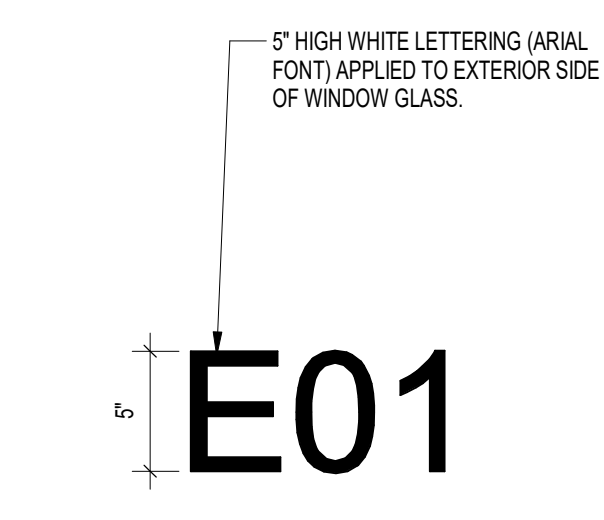


3 PARTIAL EAST ELEVATION
1/8" = 1'-0"

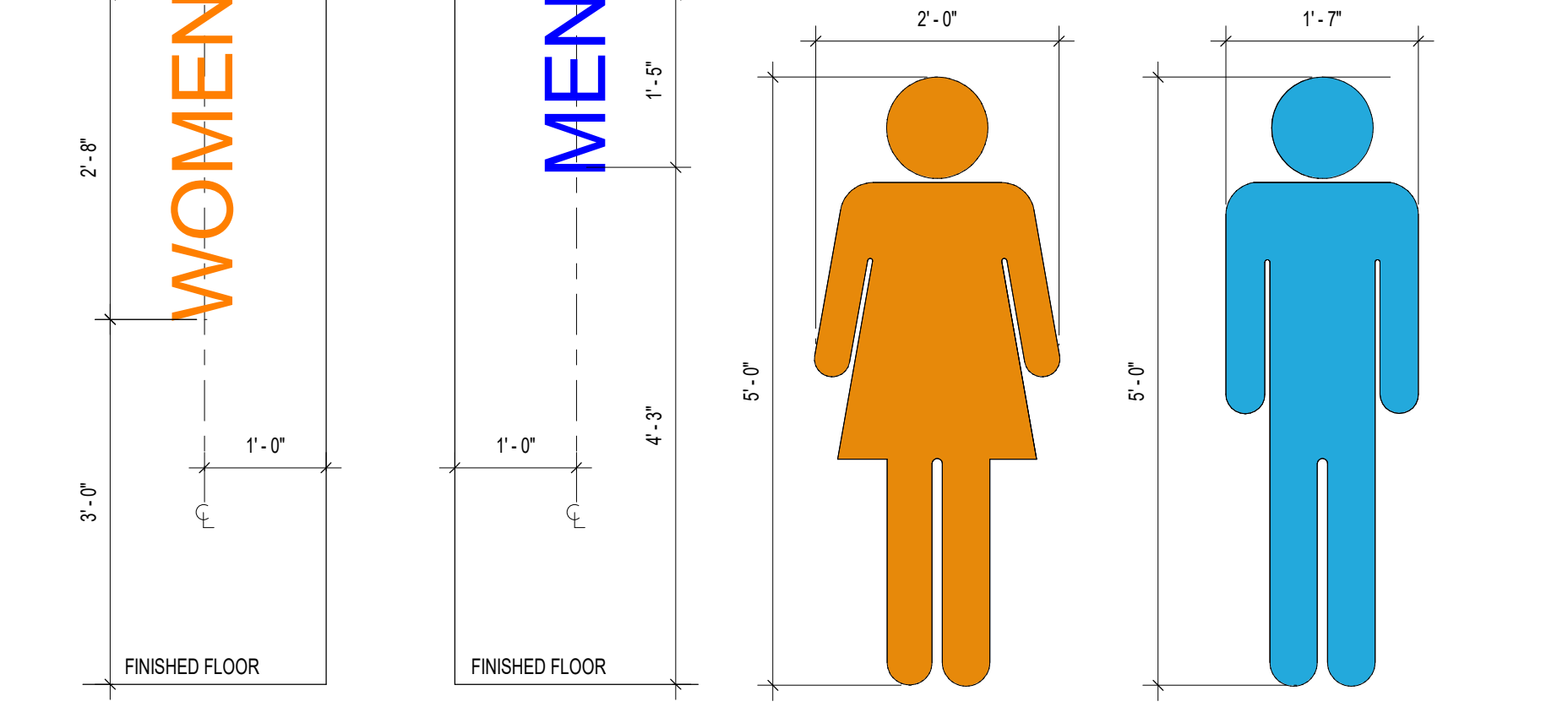
C:\Users\bsimoth\Documents\2000669-DOB7-18-ARCH-Central-bsimoth.rvt 2/17/2021 2:20:29 PM



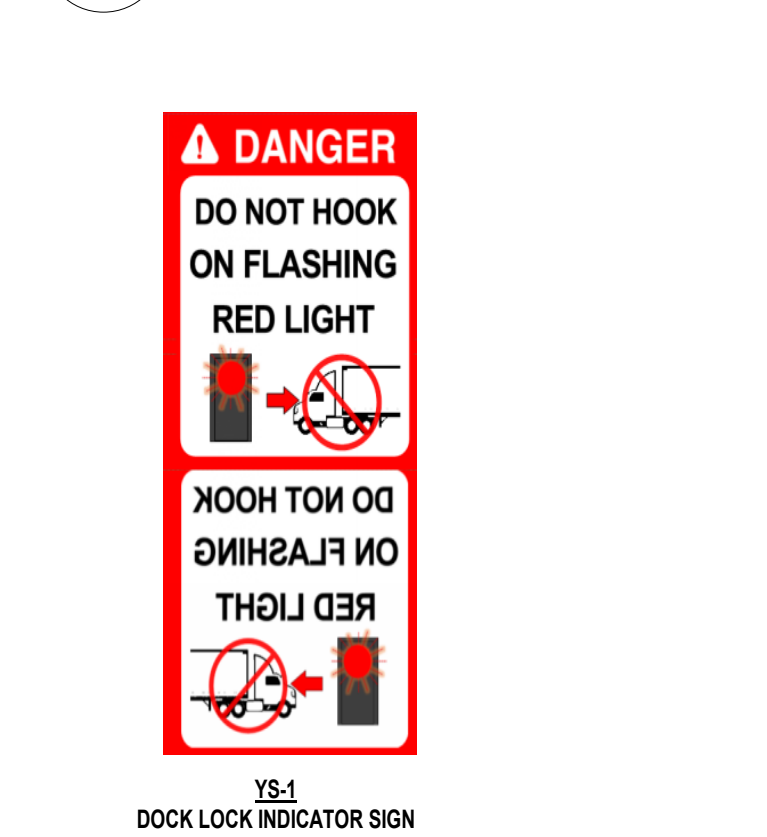
8 SIGNAGE - DOOR SIGN PLACEMENT DETAILS
1/4" = 1'-0"



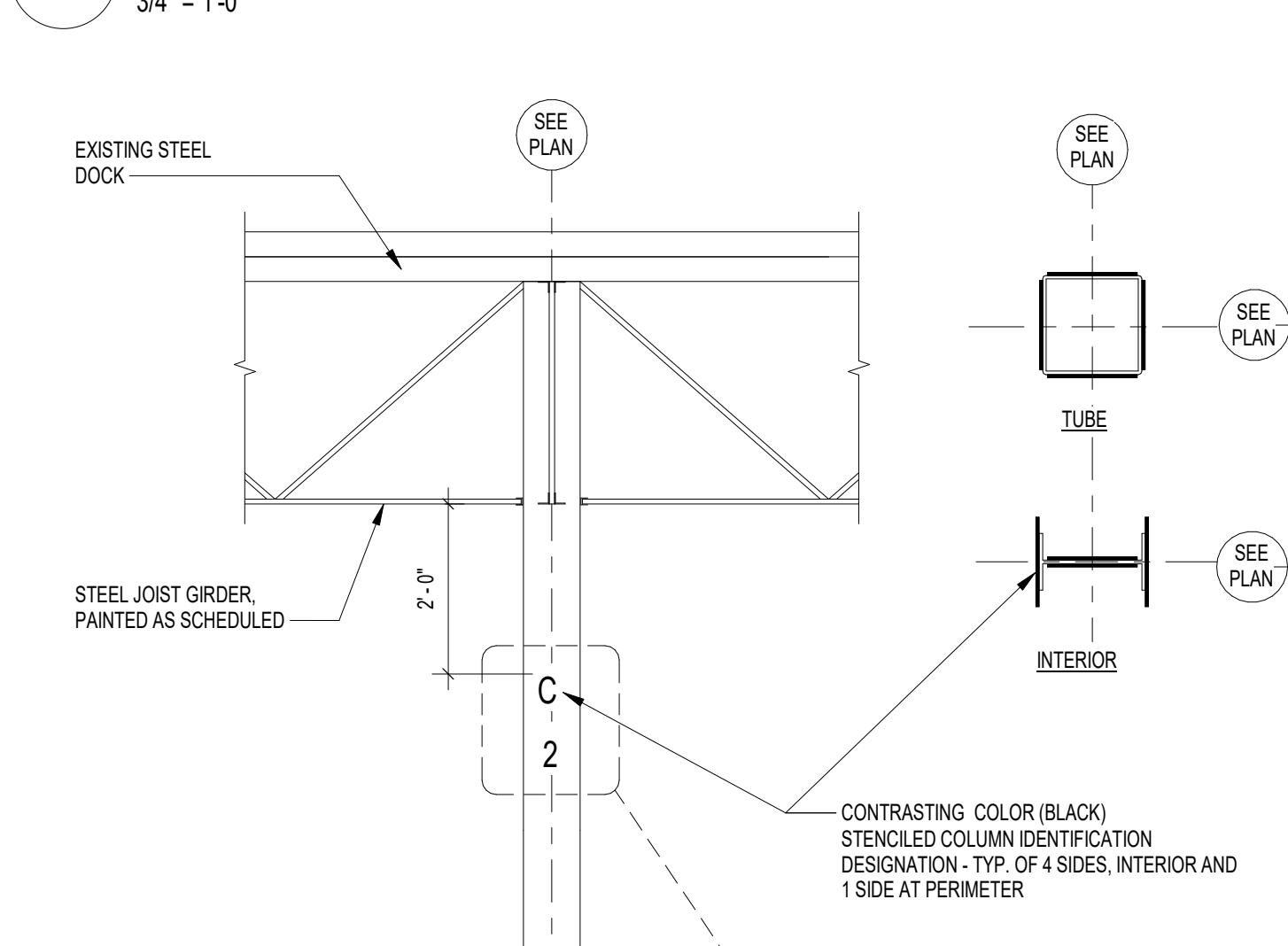
12 TYPICAL SIGN MOUNTING
1/2" = 1'-0"



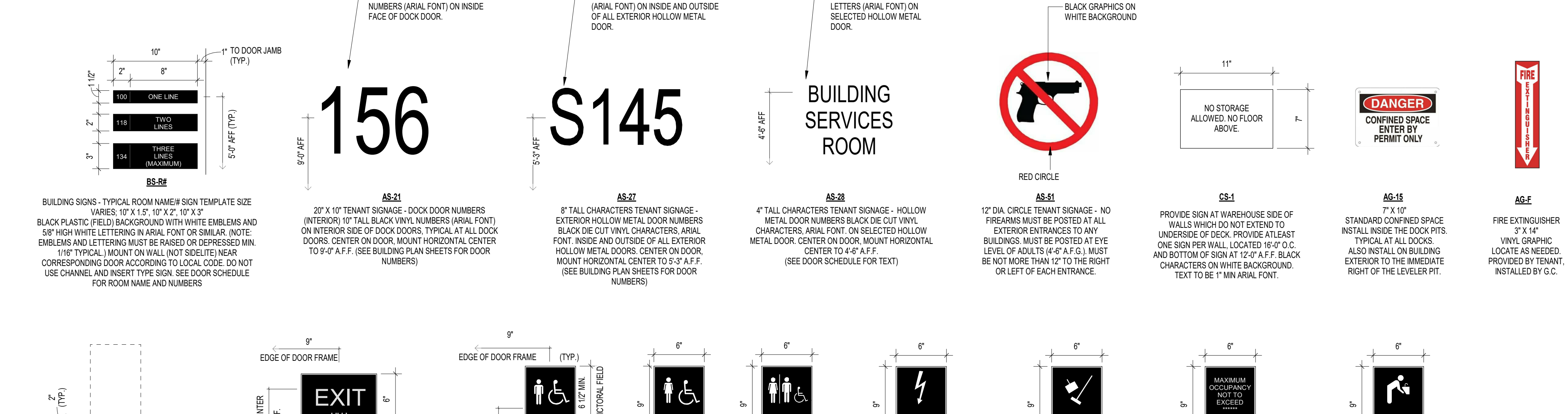
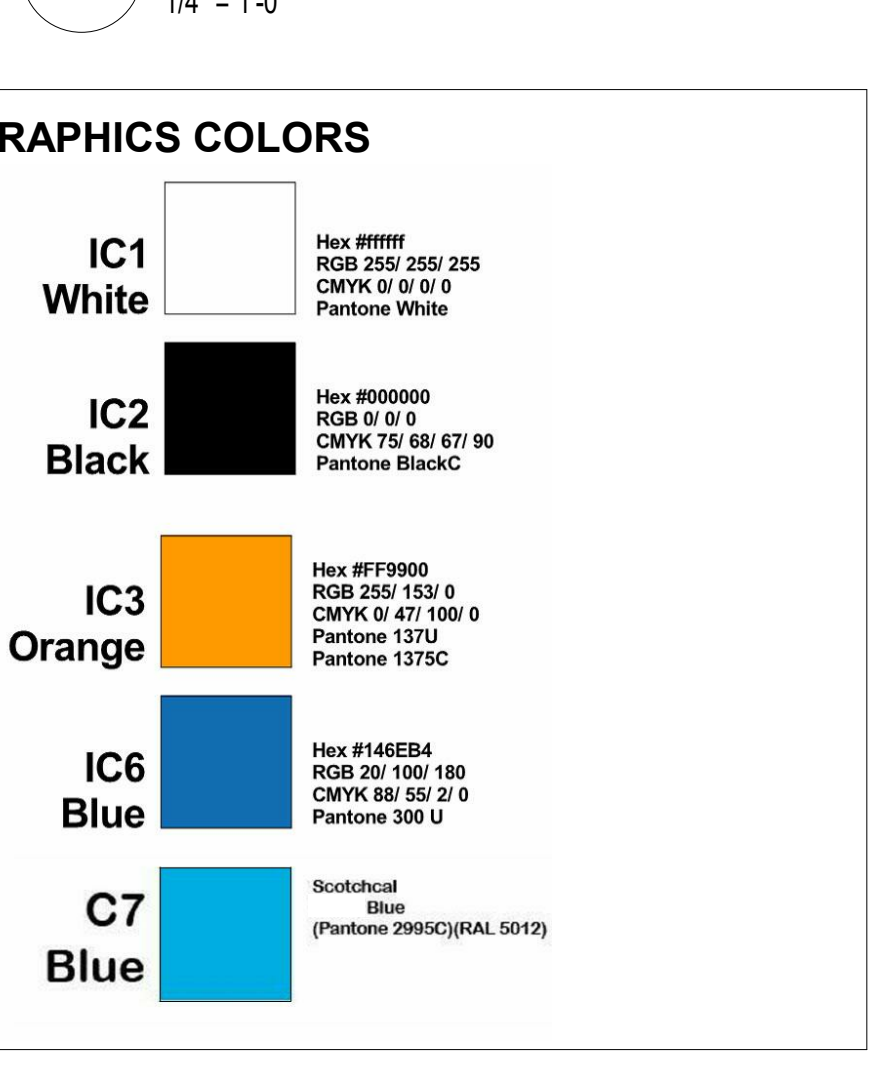
12 TYPICAL SIGN MOUNTING
1/2" = 1'-0"



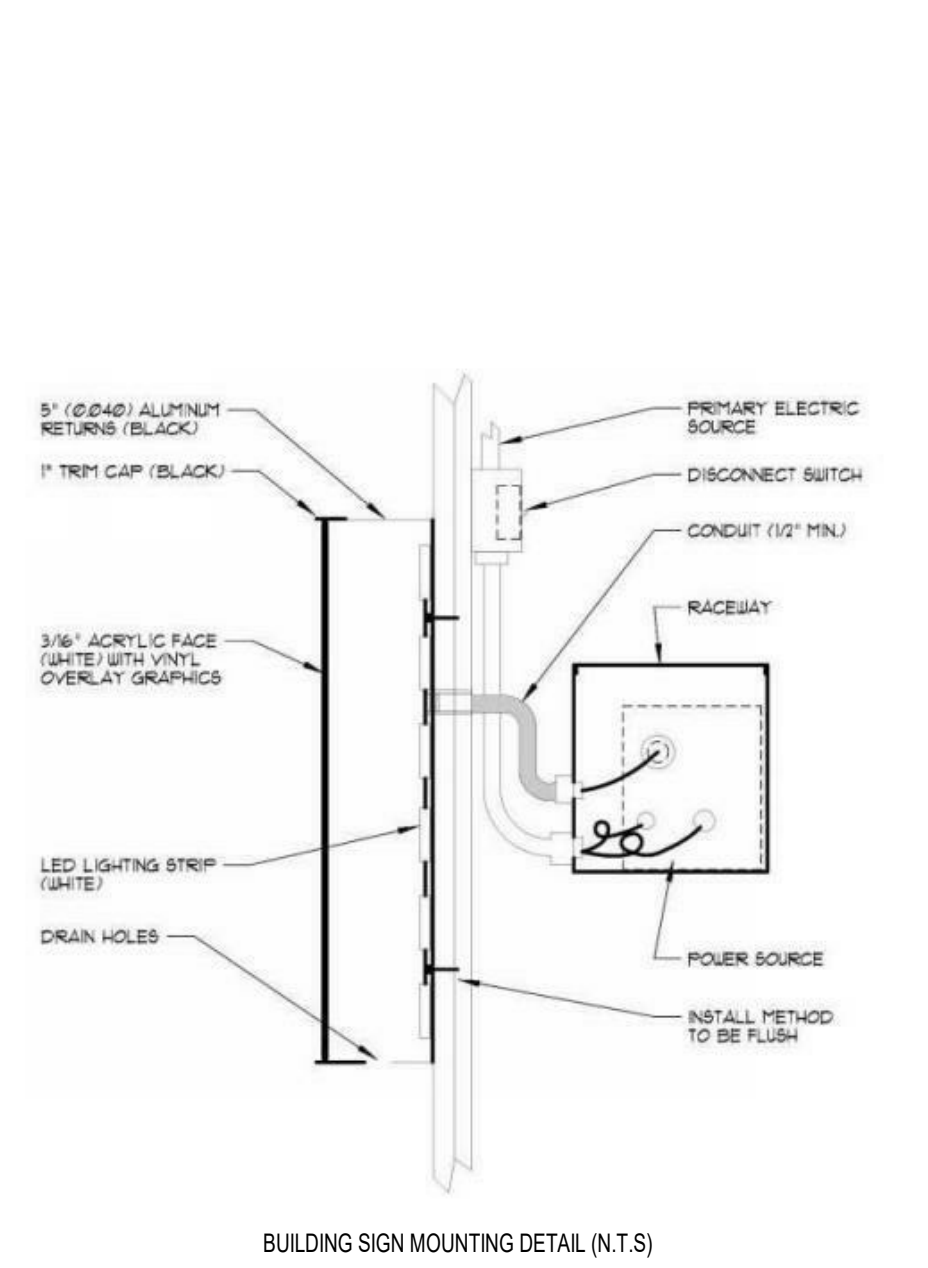
6 GRAPHICS
3/4" = 1'-0"



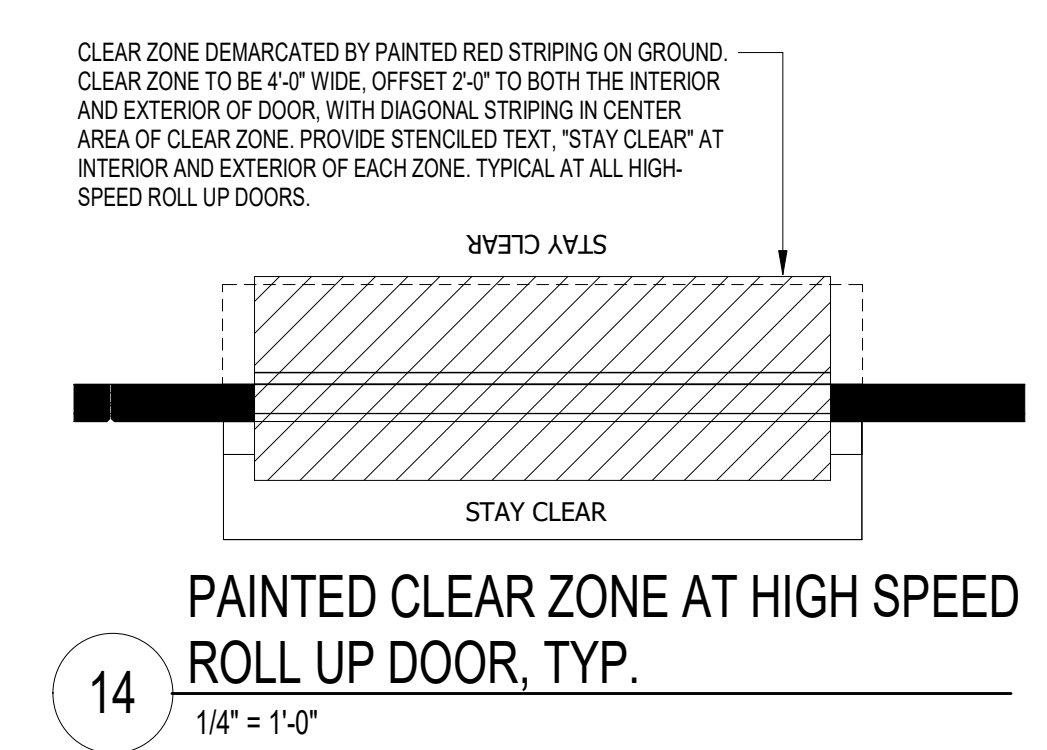
3 DOCK LOCK INDICATOR
1/4" = 1'-0"



11 SIGNS
1 1/2" = 1'-0"



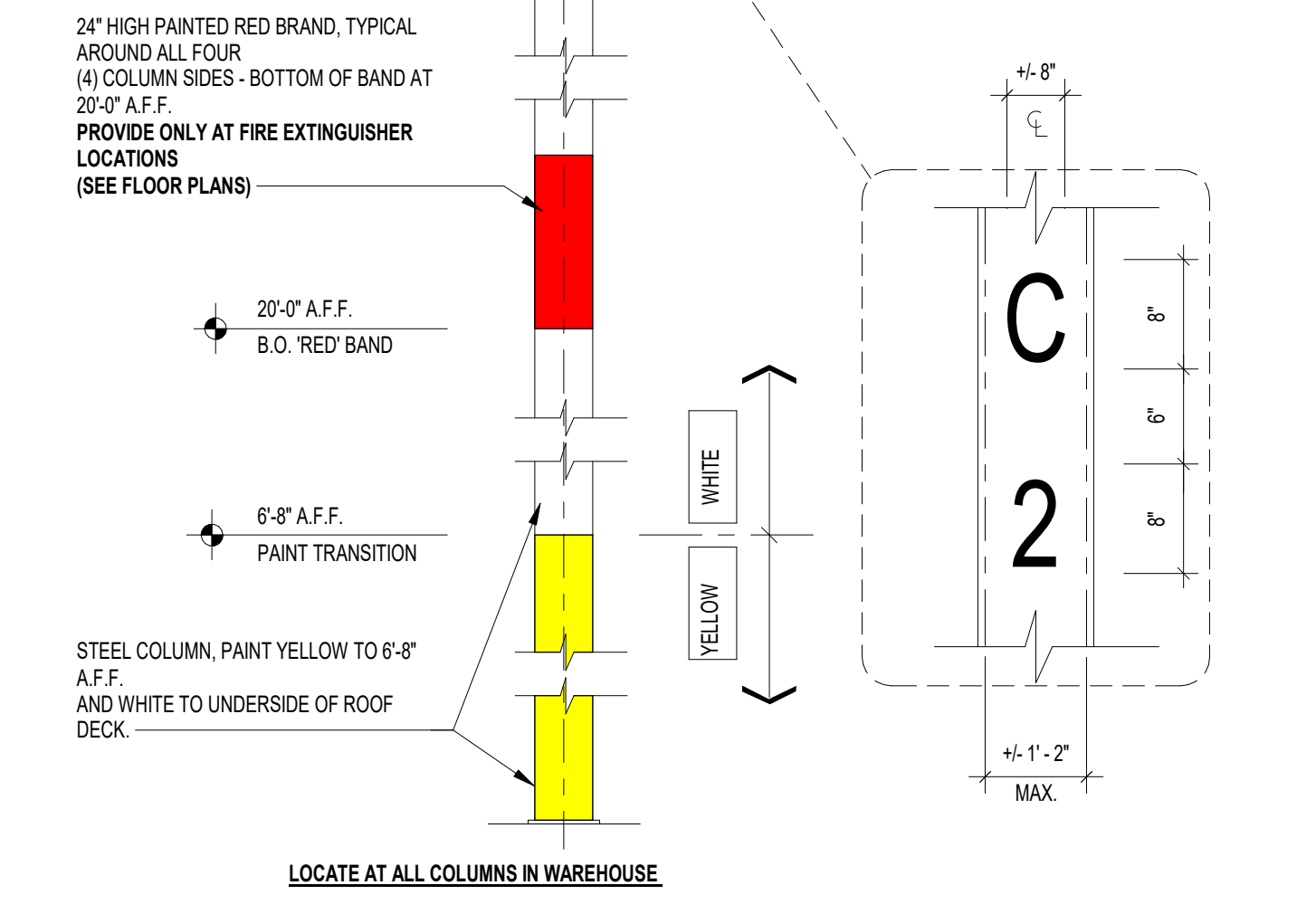
10 SIGNAGE AT EXTERIOR EMERGENCY DOOR
1" = 1'-0"



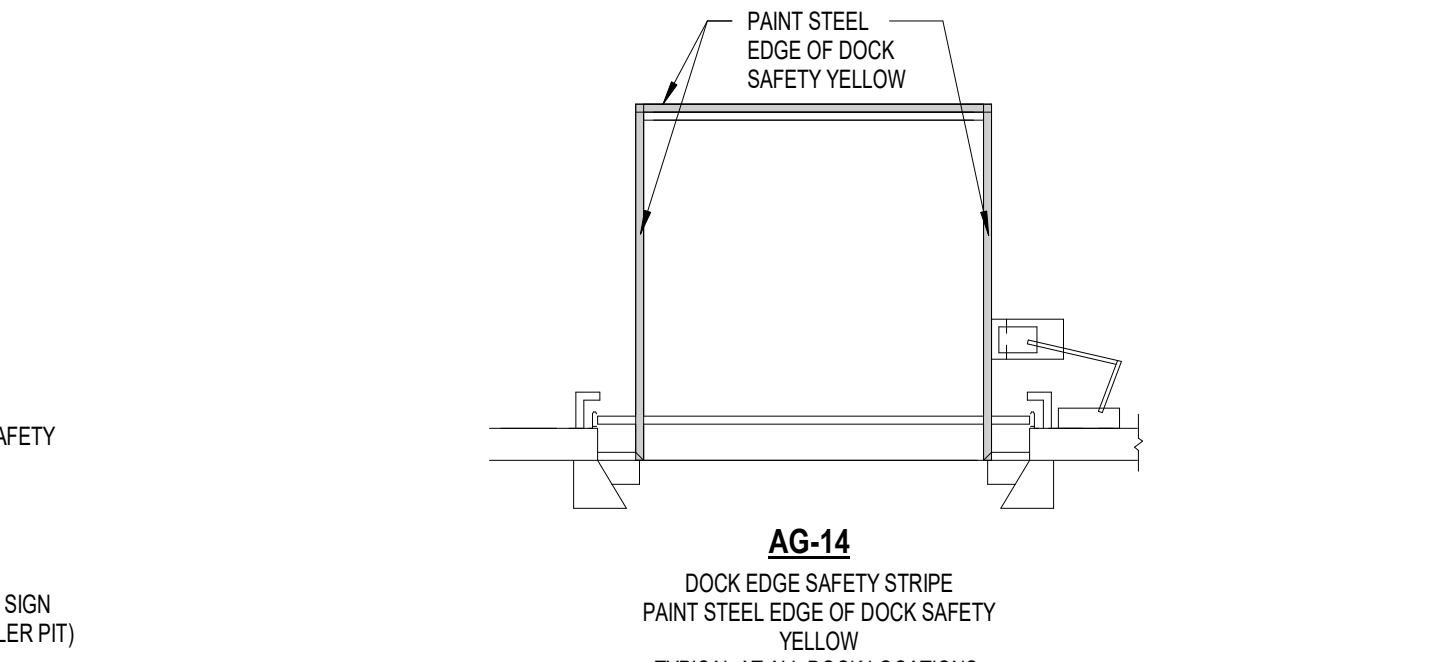
14 PAINTED CLEAR ZONE AT HIGH SPEED ROLL UP DOOR, TYP.
1/4" = 1'-0"



9 SIGNAGE AT EXTERIOR DOCK DOORS
1" = 1'-0"

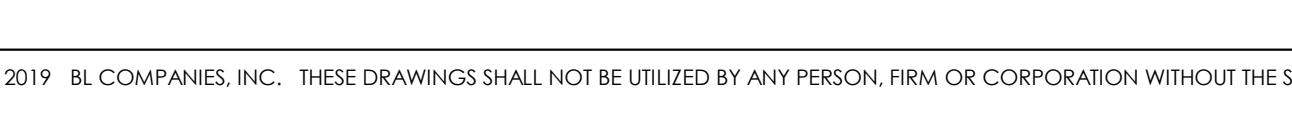


2 COLUMN IDENTIFICATION DETAIL (AG-9)
1/2" = 1'-0"

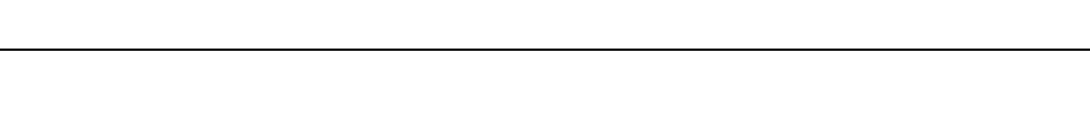


15 DOCK EDGE SAFETY STRIPE (AG-14)
1/4" = 1'-0"

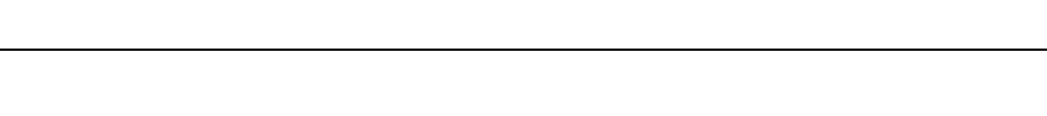
13 BUILDING SIGNAGE (IS-1)
1/8" = 1'-0"



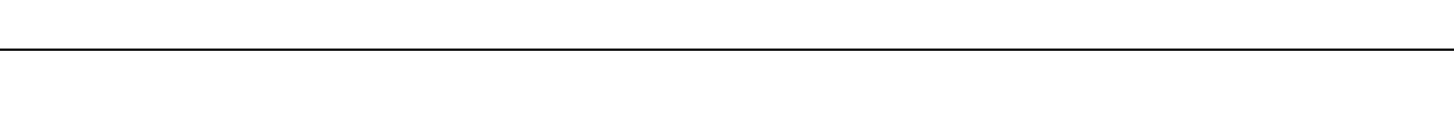
1 AVAILABLE DOCK DOOR (AG-A)
1/2" = 1'-0"



9 SIGNAGE AT EXTERIOR DOCK DOORS
1" = 1'-0"



15 DOCK EDGE SAFETY STRIPE (AG-14)
1/4" = 1'-0"



INTERIOR GRAPHICS COLORS

IC1 White	Hex #FFFFFF RGB 255 255 255 CMYK 0 0 0 0 Pantone White
IC2 Black	Hex #000000 RGB 0 0 0 CMYK 100 100 100 0 Pantone BlackC
IC3 Orange	Hex #FF9900 RGB 255 153 0 CMYK 0 47 100 0 Pantone 1375C
IC6 Blue	Hex #1466B4 RGB 20 102 180 CMYK 80 50 2 0 Pantone 300 U
C7 Blue	Scotchlite Blue (Pantone 2885C) (RAL 5012)

VINYL GRAPHICS GENERAL NOTES

DOOR SIGNS: SEE DOOR SIGN PLACEMENT DETAIL ON THIS SHEET FOR MOUNTING HEIGHTS.

SPECIFICATIONS: SEE WORLDWIDE REAL ESTATE SIGNAGE STANDARDS (REV. 10) FOR COLOR GENERAL NOTES AND ADDITIONAL SIGNAGE COLORS.

DESCRIPTION: CUSTOM CUT VINYL GRAPHICS, ATTACHED TO FIRST SURFACE OF INTERIOR GLASS.

GRAPHICS AND TYPOGRAPHY: SIGN GRAPHICS ARE HEAVY DUTY 3M VINYL. LOGO IS A HIGH RESOLUTION DIGITAL PRINT ON PERMANENT ADHESIVE PRESSURE SENSITIVE VINYL SUBSTRATE WITH LUSTER OVER LAMINATE, CUT TO SHAPE FROM VECTOR FILE. COPY IS MATTE WHITE VINYL.

INSTALLATION: LOCATIONS ARE GENERALLY NOTED ON THE ATTACHED LOCATION PLANS. THE CONTRACTOR IS RESPONSIBLE FOR FIELD VERIFYING ALL INSTALLATION CONDITIONS PRIOR TO FABRICATION. THE INSTALLATION METHODS AND DETAILS FOR EACH LOCATION SHALL BE ILLUSTRATED IN THE SUBMITTED SHOP DRAWINGS. FINAL LOCATION WILL BE APPROVED ON SITE BY THE TENANT REPRESENTATIVE.

SUBMITTALS: THE FOLLOWING SHALL BE SUBMITTED FOR APPROVAL PRIOR TO FABRICATION - (3) SETS OF SHOP DRAWINGS AND (3) 6" X6" VINYL SAMPLES OF EACH SIGN FACE COLOR. SEE GENERAL CONSTRUCTION AND INSTALLATION SPECIFICATIONS FOR ADDITIONAL SUBMITTALS.

SIGNAGE GENERAL NOTES

- FINAL QUANTITIES SHALL BE COORDINATED AND VERIFIED IN FIELD.
- ADDITIONAL SIGNAGE NOT SHOWN ON GRAPHICS PLAN MAY BE REQUIRED PER LOCAL CODE AND/OR AHJ. SUB-CONTRACTOR SHALL COORDINATE WITH LOCAL AHJ AND PROVIDE AS REQUIRED.
- MOUNT SIGNAGE ACCORDING TO LOCAL CODES.
- ALL PERMANENT SIGNAGE TO ACCESSIBLE AREAS TO HAVE RAISED BRILLE CHARACTERS PER ANSI 117.1-2003
- TYPICAL SIGN FONT IS SET IN ARIAL.
- SEE DOOR SCHEDULE FOR DOOR SIGNAGE REQUIRED TEXT.

LANDSCAPE PLANT SCHEDULE

KEY	QTY	BOTANICAL NAME	COMMON NAME	ROOT	SIZE	COMMENTS
AR	10	Acer rubrum 'Frankford'	RED SUNSET RED MAPLE	B&B	MIN. 2.5" CAL.	MIN. 6' BRANCH HEIGHT
AS	8	Acer saccharum 'Legacy'	LEGACY SUGAR MAPLE	B&B	MIN. 2.5" CAL.	MIN. 6' BRANCH HEIGHT
GT	10	Gleditsia Triacanthos var. Inermis 'Shademaster'	SHADEMASTER HONEYLOCUST	B&B	MIN. 2.5" CAL.	MIN. 6' BRANCH HEIGHT
PA	7	Platanus x acerifolia 'Morton's Circle'	EXCLAMATION! PLANETREE	B&B	MIN. 2.5" CAL.	MIN. 6' BRANCH HEIGHT
PR	9	Prunus X Incam 'Okame'	OKAME FLOWERING CHERRY	B&B	MIN. 2.0" CAL.	MIN. 5' BRANCH HEIGHT
QR	3	Quercus rubra	RED OAK	B&B	MIN. 2.5" CAL.	MIN. 6' BRANCH HEIGHT
TC	6	Tilia cordata 'Greenspire'	GREENSPIRE LINDEN	B&B	MIN. 2.5" CAL.	MIN. 6' BRANCH HEIGHT
UM	5	Ulmus 'Morton Glossy'	TRIUMPH ELM	B&B	MIN. 2.5" CAL.	MIN. 6' BRANCH HEIGHT
TO	9	Thuja occidentalis 'Nigra'	DARK AMERICAN ARBORVITAE	B&B	MIN 7'-8" HT.	MIN. 6' BRANCH HEIGHT

KEY	QTY	BOTANICAL NAME	COMMON NAME	ROOT	SIZE	COMMENTS
IG	56	Ilex glabra 'Shamrock'	SHAMROCK INKBERRY	CONT.	30"-36" HT.	PLANT 4' O.C.
IVW	21	Ilex verticillata 'Winter Red'	WINTER RED WINTERBERRY (FEMALE)	CONT.	30" HT. MIN.	PLANT 5' O.C.
IVS	7	Ilex verticillata 'Southern Gentleman'	SOUTHERN GENTLEMAN WINTERBERRY (MALE)	CONT.	30" HT. MIN.	PLANT 5' O.C.
JC	51	Juniperus chinensis 'Sea Green'	SEA GREEN JUNIPER	CONT.	30" HT. MIN.	PLANT 5' O.C.
PO	3	Physocarpus opulifolius 'Diabolo'	PURPLE NINEBARK	CONT.	30" HT. MIN.	PLANT 4' O.C.
PV	40	Panicum virgatum 'Shenandoah'	SHENANDOAH SWITCHGRASS	CONT.	24" HT. MIN.	PLANT 30" O.C.
TM	60	Taxus x media 'Densiflormis'	SEMI-DWARF YEW	CONT.	30" HT. MIN.	PLANT 5' O.C.
VC	19	Viburnum cassinoides	WITHEROD VIBURNUM	CONT.	30" HT. MIN.	PLANT 5' O.C.

KEY	QTY	BOTANICAL NAME	COMMON NAME	ROOT	SIZE	COMMENTS
AM	84	Aronia melanocarpa 'UConnAM165'	LOW SCAPE MOUND CHOKEBERRY	CONT.	12" HT. MIN.	PLANT 3' O.C.
JS	50	Juniperus chinensis var. sargentii	SARGENT JUNIPER	CONT.	18"-24" SPD.	PLANT 4' O.C.

- NOTES:**
 1) ALL SUBSTITUTIONS MUST RECEIVE APPROVAL FROM THE LANDSCAPE ARCHITECT PRIOR TO DELIVERY TO SITE.
 2) PROVIDE AND INSTALL ALL PLANTS SHOWN ON THE PLANTING PLAN DRAWINGS; THE QUANTITIES IN THE PLANT LIST ARE PROVIDED FOR THE CONTRACTOR'S CONVENIENCE ONLY. IF DISCREPANCIES OCCUR, THE LARGER QUANTITY SHALL APPLY.
 3) IF THERE IS A DISCREPANCY BETWEEN BOTANICAL AND COMMON NAME, BOTANICAL NAME PREVAILS.

LEGEND

- PROVIDE AND INSTALL EVERGREEN TREE
- PROVIDE AND INSTALL DECIDUOUS SHADE TREE
- PROVIDE AND INSTALL FLOWERING TREE
- PROVIDE AND INSTALL SHRUB
- PROVIDE AND INSTALL LAWN SEED MIX
- PROVIDE AND INSTALL CONSERVATION/WILDLIFE SEED MIX
- PROVIDE AND INSTALL GROUNDCOVER
- PROVIDE AND INSTALL ROOT BARRIER
- 50' AND 100' WETLAND BUFFERS

I HEREBY DECLARE TO THE BEST OF MY KNOWLEDGE AND BELIEF THAT THIS PLAN IS SUBSTANTIALLY CORRECT.
 Matthew J. Brujon
 MATTHEW J. BRUJON CT PE # 33356

MOTOR FREIGHT TRANSPORTATION TERMINAL OR GARAGE / WINDSTANLEY ENTERPRISES LLC PE (PLANNED EMPLOYMENT) ZONE
 PROJECT/APPLICANT
 107 EASTERN BOULEVARD, GLASTONBURY, CT
 PROJECT ADDRESS
 SPECIAL PERMIT SECTION TPZ CHAIRMAN
 DATE SPECIAL PERMIT APP'D DIRECTOR OF COMMUNITY DEVELOPMENT
 FILE NO.

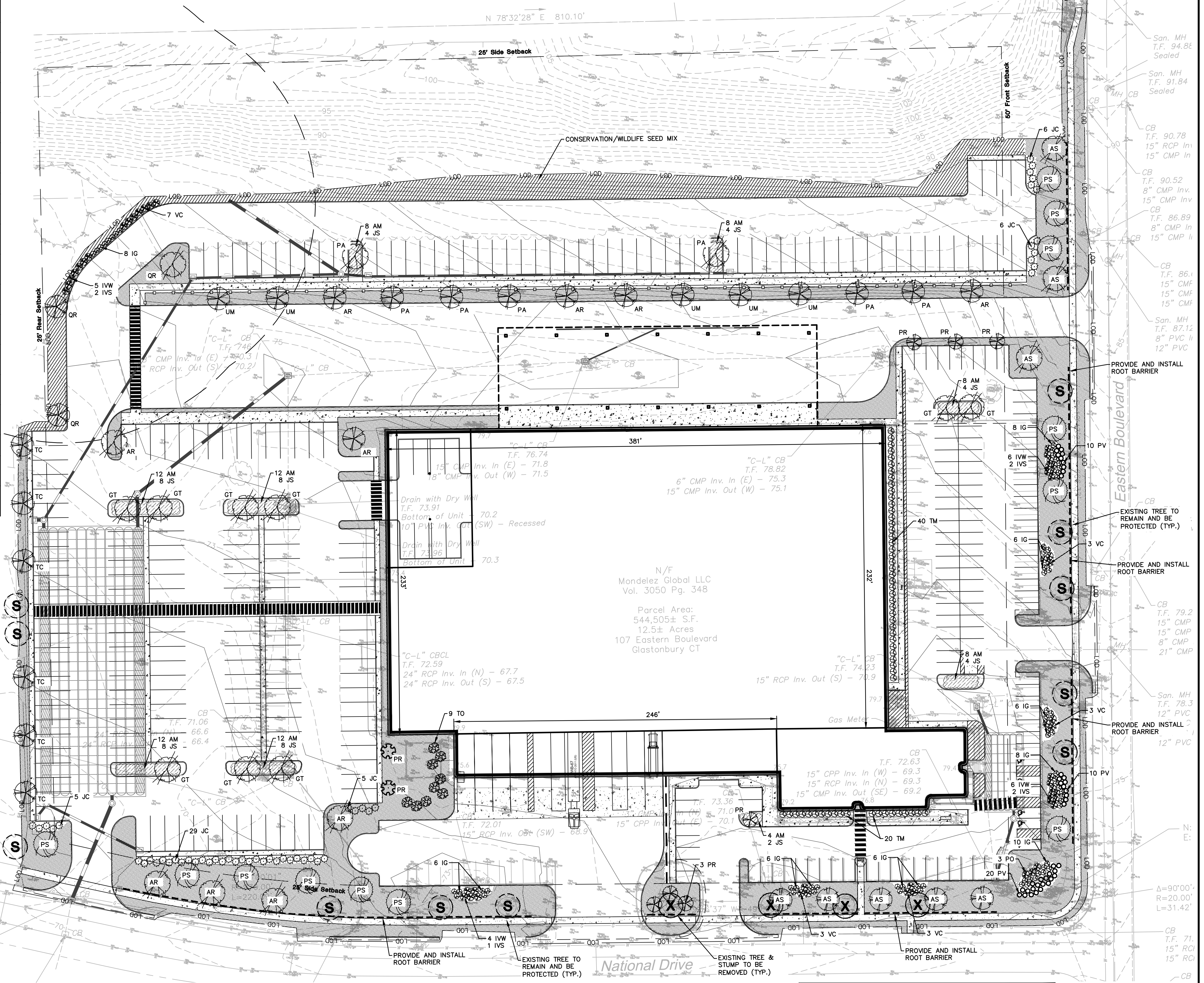
IRRIGATION NOTES
 PLANTINGS AND LAWN AREA TO BE WATERED BY AN AUTOMATED UNDERGROUND IRRIGATION SYSTEM. THE CONTRACTOR SHALL PROVIDE A SCHEMATIC IRRIGATION LAYOUT FOR REVIEW AND APPROVAL BY THE OWNER'S REPRESENTATIVE AND THE LANDSCAPE ARCHITECT.

SEED MIX NOTES

- A. LAWN SEEDING MIX:**
 15% PERENNIAL RYEGRASS (BLEND OF 3 IMPROVED HYBRIDS)
 25% FINE LEAF OR CREEPING FESCUE (BLEND OF 3 IMPROVED HYBRIDS)
 60% KENTUCKY BLUEGRASS (BLEND OF 3 IMPROVED HYBRIDS)
 SEEDING RATE: 5 LBS/1,000 S.F.
 SEEDING DATES: AUGUST 15 - OCTOBER 1 AND APRIL 15 - JUNE 30 UNLESS OTHERWISE APPROVED BY THE OWNER OR LANDSCAPE ARCHITECT.
- B. CONSERVATION/WILDLIFE SEED MIX -**
 NEW ENGLAND CONSERVATION/WILDLIFE MIX
 NEW ENGLAND WETLAND PLANTS INC. OR APPROVED EQUAL
 SPECIES: VIRGINIA WILD RYE (ELYMUS VIRGINICUS), LITTLE BLUESTEM (SCHIZACHYRIUM SCOPARIUM), BIG BLUESTEM (ANDROPOGON GERARDII), CREEPING RED FESCUE (FESTUCA RUBRA), SWITCH GRASS (PANICUM VIRGATUM), PARTIDGE PEA (CHAMAECRISTA FASCICULATA), PANICLED LEAD TICK TREFOL (DESMODIUM PANICULATUM), INDIAN GRASS (SORGHASTRUM NUTANS), BLUE VERVAIN (VERBENA HASTATA), BUTTERFLY MILKWEED (ASCLEPIAS TUBEROSA), BLACK EYE SUSAN (RUDBECKIA HIRTA), COMMON SNEEZEWEED (HELENIUM AUTUNALE), HEATH ASTER (ASTERILOPUS/SYMPHYOTRICHUM PILOSUM), EARLY GOLDENROD (SOLIDAGO JUNCEA), UPLAND BENTGRASS (AGROSTIS PERENNANS).
 APPLICATION RATE: 25 LBS/ ACRE (1 LB PER 1,750 SF)
 SEEDING DATES: AUGUST 15 - OCTOBER 1 AND APRIL 15 - JUNE 30 UNLESS OTHERWISE APPROVED BY THE OWNER OR LANDSCAPE ARCHITECT.

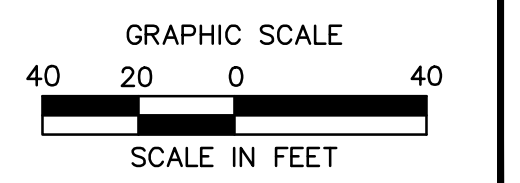
TREE PRESERVATION NOTES

- TREE PROTECTION**
 1. EXISTING TREES ALONG EASTERN BLVD AND NATIONAL DRIVE SHALL BE PROTECTED AS INDICATED ON PLANS.
 2. TREE PROTECTION SHALL BE PROVIDED PER TREE PROTECTION DETAILS SHOWN ON SHEET LL-2.
 3. NO CONSTRUCTION WORK INCLUDING GRADING, EXCAVATION OR MATERIAL STORAGE WILL BE PERMITTED WITHIN THE TREE PROTECTION AREA.
 4. TREE PROTECTION SHALL BE MAINTAINED THROUGHOUT THE DURATION OF CONSTRUCTION.
- AIR SPADING & ROOT PRUNING**
 5. ROOT PRUNING SHALL BE CONDUCTED IN THE AREA ALONG NEW SIDEWALK TO PROVIDE A MORE SUITABLE CUT FOR PROTECTED TREE ROOTS TO MINIMIZE RIPPED OR TORN ROOTS DURING EXCAVATIONS AND GRADING WITH STANDARD CONSTRUCTION EQUIPMENT.
 6. TO EXPOSE ROOTS FOR PRUNING, AIR SPADING SHALL BE CONDUCTED.
- ROOT BARRIER**
 7. ROOT BARRIER SHALL BE PROVIDED ALONG NEW SIDEWALK AND AS INDICATED ON PLANS.
 8. ROOT BARRIER SHALL BE INSTALLED PER DETAILS SHOWN ON SHEET LL-2.



SEE SHEET LL-2 FOR LANDSCAPE NOTES AND DETAILS

FOR PERMITTING PURPOSES ONLY NOT RELEASED FOR CONSTRUCTION



100 Constitution Plaza, 10th Floor
 Hartford, CT 06103
 (860) 249-2200
 (860) 249-2400 Fax



PROPOSED DEVELOPMENT
 107 EASTERN BOULEVARD
 TOWN OF GLASTONBURY, CT

REVISIONS

No.	Date	Desc.
1.	12/14/2020	REVISED PER TOWN COMMENTS
2.	01/20/2021	REVISED PER TOWN COMMENTS

Designed: W.E.V.
 Drawn: P.G.M.
 Reviewed:
 Scale: 1"=40'
 Project No.: 2000669
 Date: 09/30/2020
 CAD File: 200066901

Title: **LANDSCAPE PLAN**

Sheet No. **LL-1**

2/17/2021, 11:00:07 AM, C:\WORK\2020\1000669\DWG\LL-1.DWG, 11:00:07 AM, 2020/11/17 11:00:07 AM