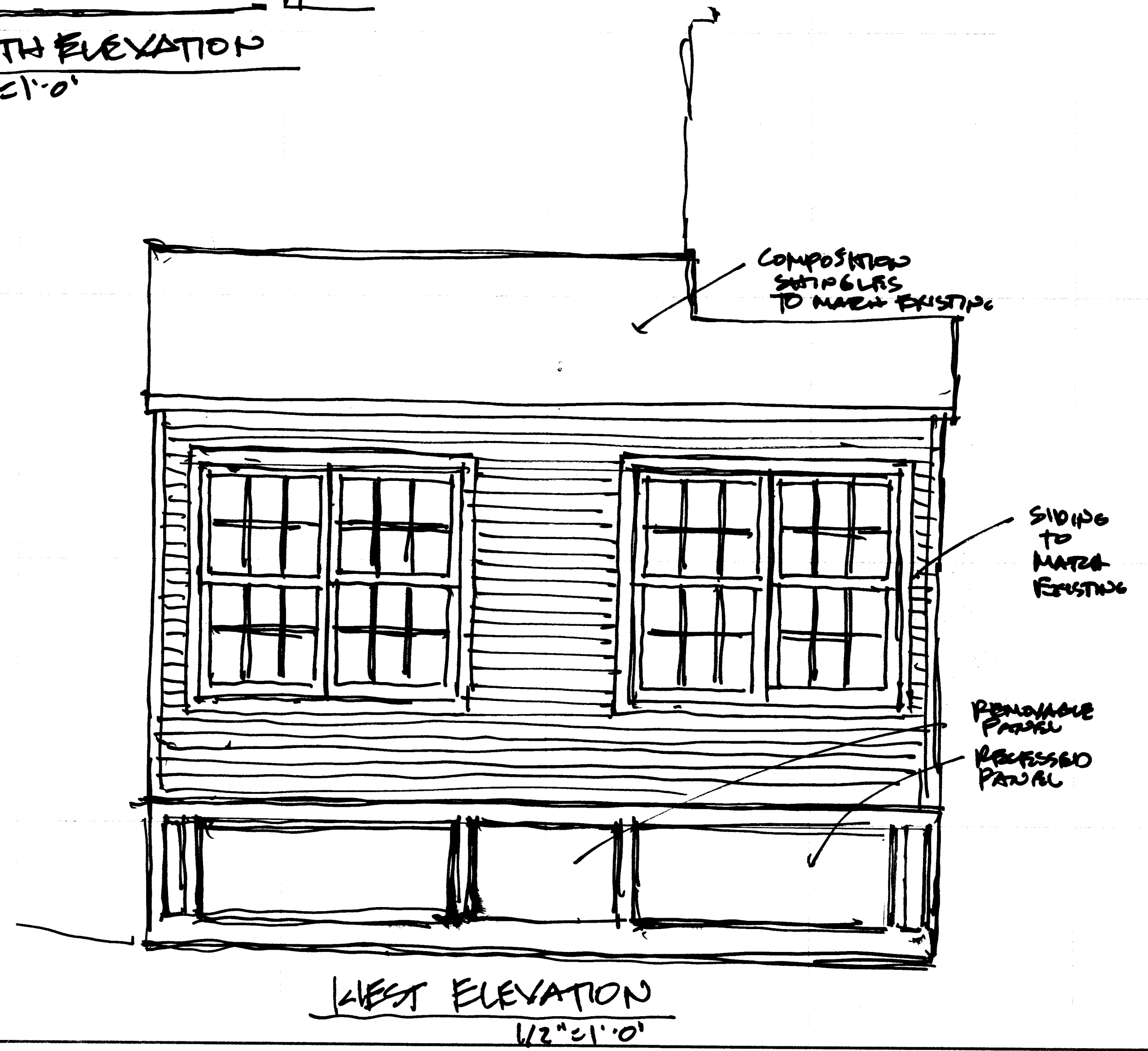
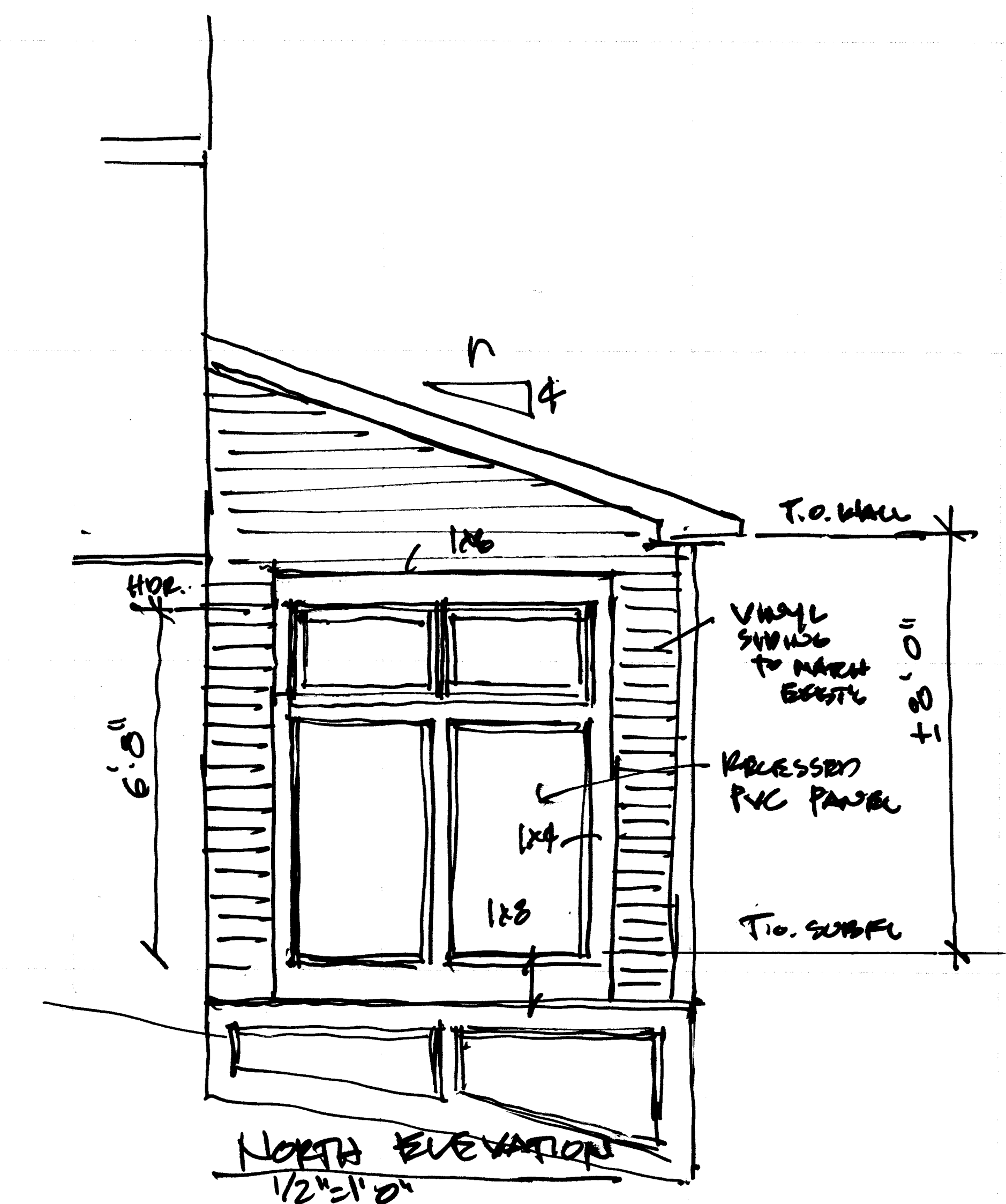
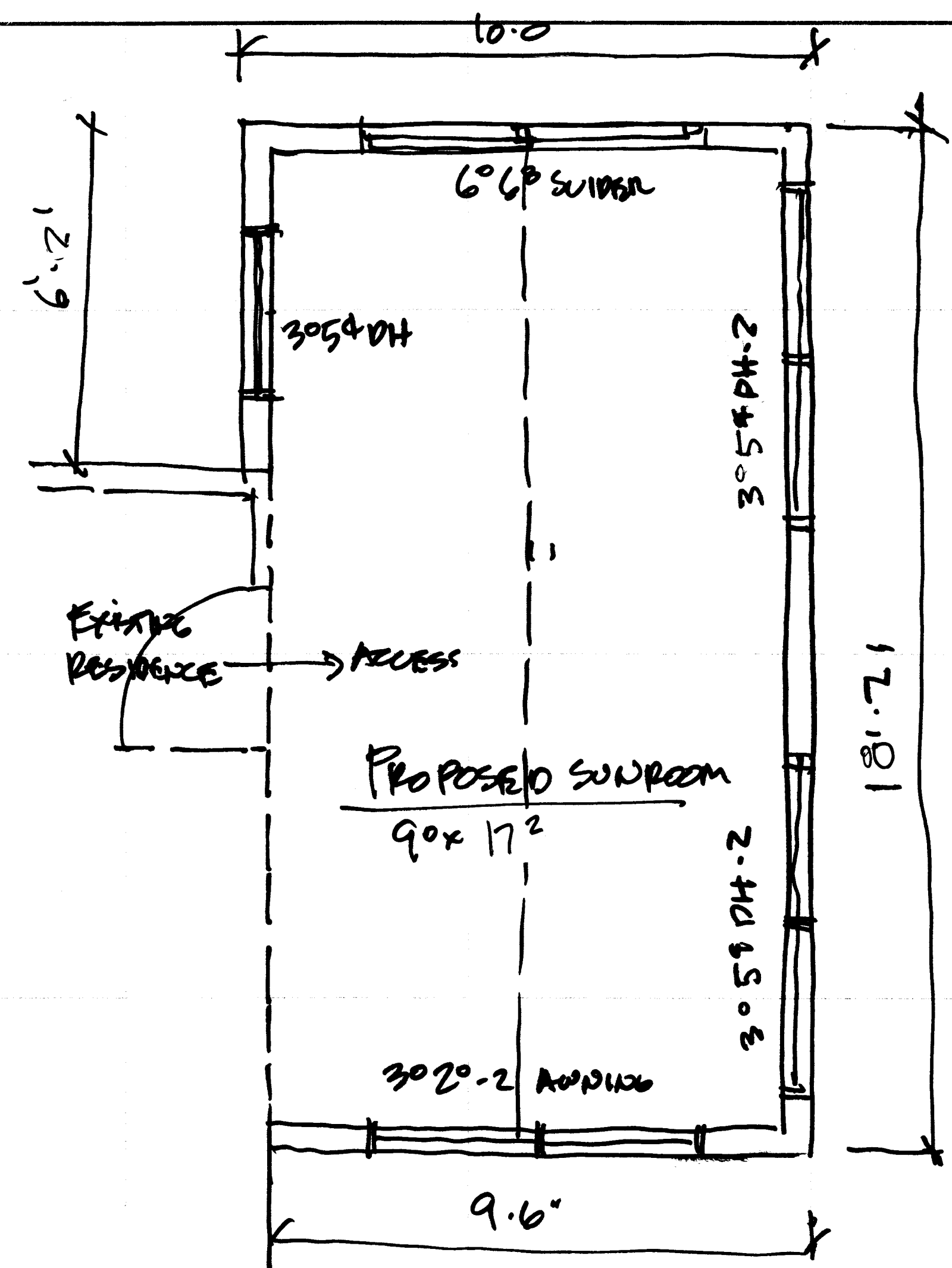


SOUTH ELEVATION
12' x 11'0"



WEST ELEVATION
12' x 11'0"



NORTH ELEVATION
12' x 11'0"

Date
10-28-20
Revised

Kemper Associates Architects, LLC
700 Farmington Avenue Bldg 2 • Farmington, Connecticut 06032
(860) 409 - 7155 Fax (860) 409 - 7100

ADDITIONS & ALTERATIONS TO THE
CONDON RESIDENCE
306 GRISWOLD STREET
GLASTONBURY, CONNECTICUT

© 2020 KEMPER ASSOCIATES ARCHITECTS, LLC. ALL RIGHTS RESERVED. PROTECTION OF THIS ARCHITECTURAL DESIGN IS GUARANTEED UNDER FEDERAL AND STATE COPYRIGHT LAWS. EXTENDS TO ARCHITECTURAL, ENGINEERING, INTERIOR DESIGN, AND LANDSCAPE PLANS, AS APPLICABLE, TO INTENTIONAL AND UNINTENTIONAL INFRINGEMENTS, AND PROVIDES FOR SPECIFIC STATUTORY DAMAGES, BOTH CIVIL AND CRIMINAL. THESE ARCHITECTURAL WORKS ARE COPYRIGHTED AND PROTECTED BY TITLE 17 OF THE U.S. STATE CODE AND REPRODUCTIONS ARE STRICTLY PROHIBITED AND FORBIDDEN.

Drawn By
JK

Sheet No.