

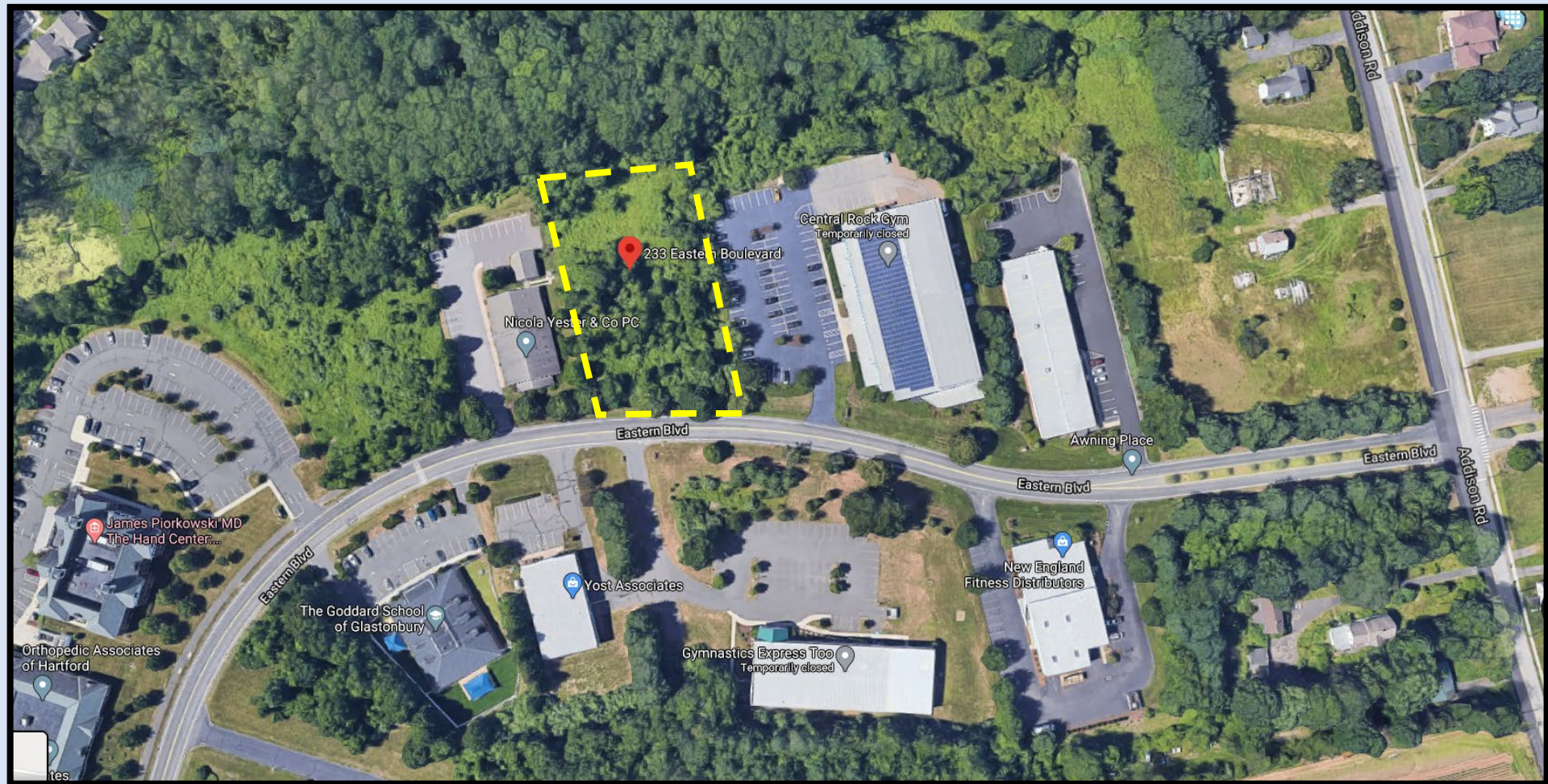
# Parking Lot Expansion for Central Rock Gym 233 Eastern Boulevard



**Applicant:**  
EASTERN AVE HOLDINGS LLC

**Owner:**  
233 EASTERN BLVD ASSOCIATES, LLC

**Inland Wetlands & Watercourses Agency/  
Conservation Commission  
June 25, 2020 - 7:00 PM**

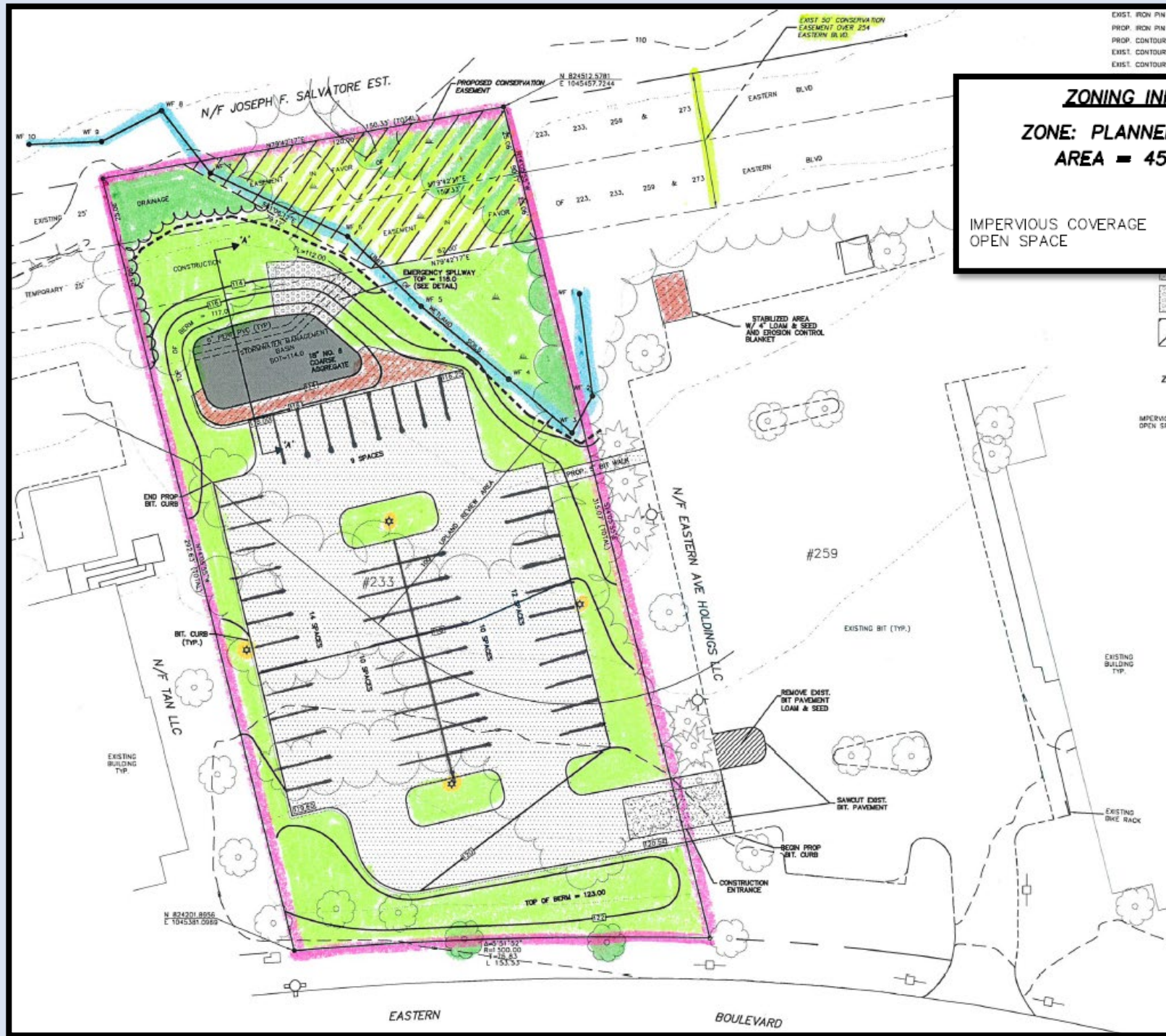


# Site Plan

## ZONING INFORMATION

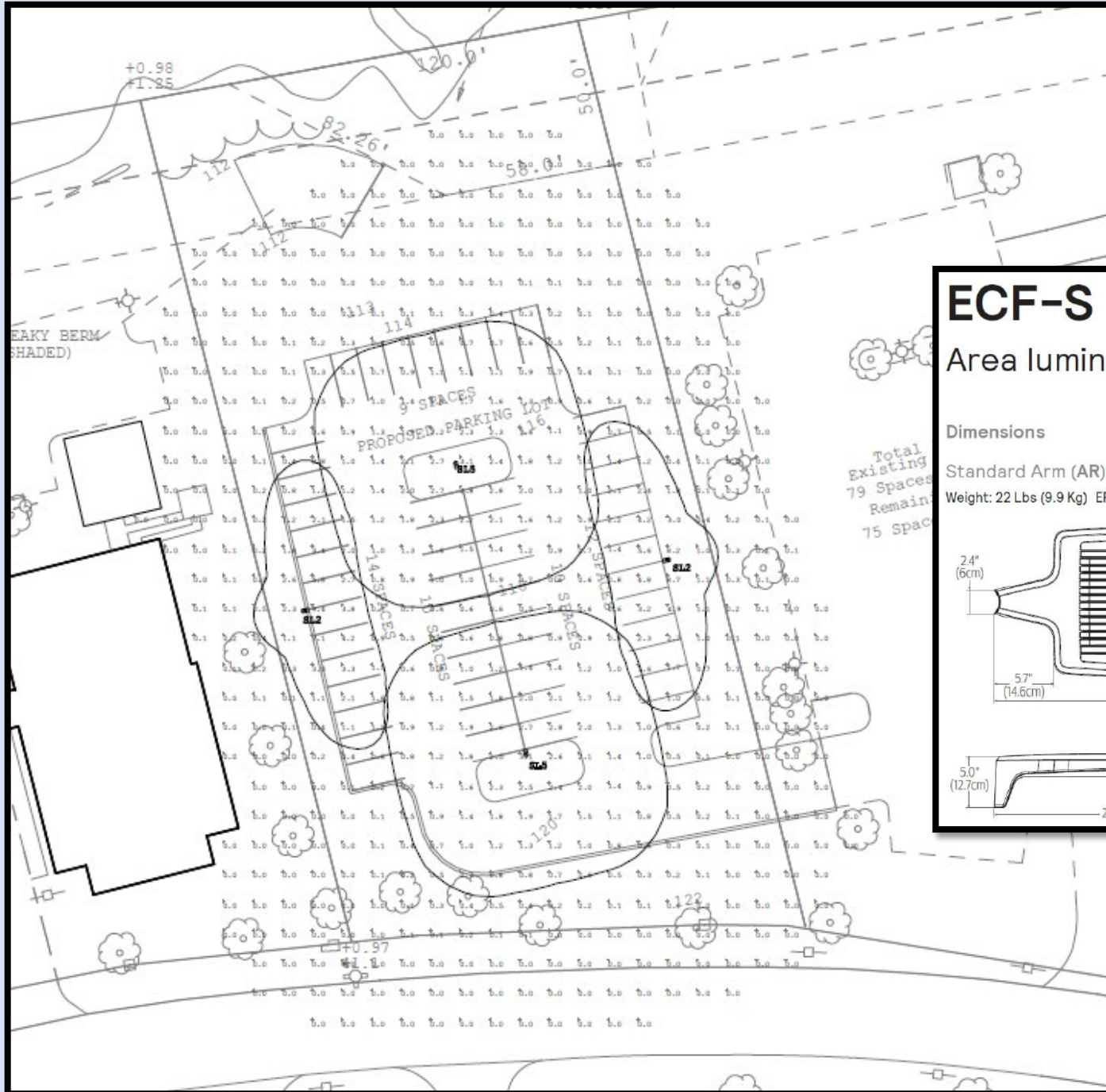
**ZONE: PLANNED EMPLOYMENT**  
**AREA = 45,376 S.F.**

IMPERVIOUS COVERAGE	=19,232 S.F.	42.4%
OPEN SPACE	=26,144 S.F.	57.6%
	45,376 S.F.	100.0%



# Lighting Plan

12 ft. pole on 2 ft. base  
Full Cutoff Fixture



## ECF-S EcoForm small

Area luminaire

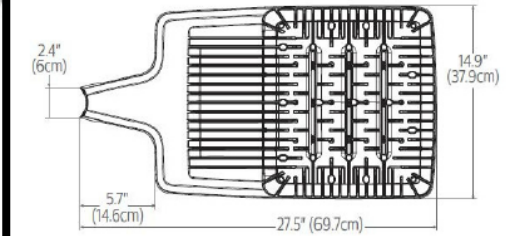
\*MOUNTED @ 14.0 FT.

STRAIGHT SQUARE STEEL LIGHT POLE  
GARDCO SSS-12-4-11

### Dimensions

Standard Arm (AR)

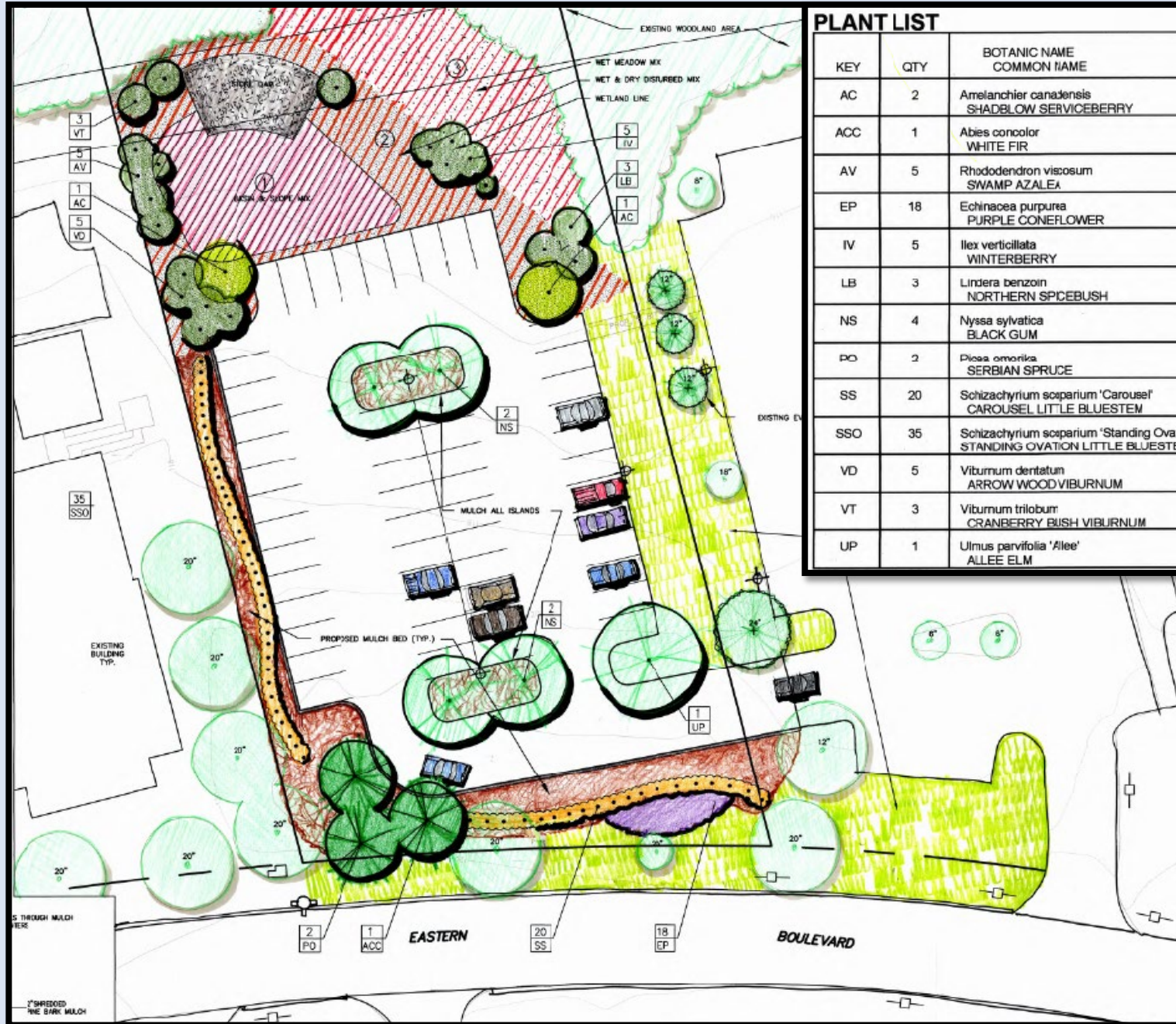
Weight: 22 Lbs (9.9 Kg) EPA: 0.21ft<sup>2</sup> (.019m<sup>2</sup>)



# Landscape Plan

## PLANT LIST

KEY	QTY	BOTANIC NAME COMMON NAME	SIZE	REMARKS
AC	2	<i>Amelanchier canadensis</i> SHADBLOW SERVICEBERRY	6'-7' ht.	MULTI-STEM
ACC	1	<i>Abies concolor</i> WHITE FIR	6'-7' ht.	UNSHEARED
AV	5	<i>Rhododendron viscosum</i> SWAMP AZALEA	24"-30"	
EP	18	<i>Echinacea purpurea</i> PURPLE CONEFLOWER	2 gal.	
IV	5	<i>Ilex verticillata</i> WINTERBERRY	24"-30"	
LB	3	<i>Lindera benzoin</i> NORTHERN SPICEBUSH	36" ht.	
NS	4	<i>Nyssa sylvatica</i> BLACK GUM	2½" cal.	B&B MATCHED SHAPE
PO	2	<i>Picea omorika</i> SERBIAN SPRUCE	5' / 7' ht.	UNSHEARED
SS	20	<i>Schizachyrium scoparium</i> 'Carousel' CAROUSEL LITTLE BLUESTEM	2 gal.	30"-36" O.C.
SSO	35	<i>Schizachyrium scoparium</i> 'Standing Ovation' STANDING OVATION LITTLE BLUESTEM	2 gal.	30"-36" O.C.
VD	5	<i>Viburnum dentatum</i> ARROW WOOD VIBURNUM	4' ht.	
VT	3	<i>Viburnum trilobum</i> CRANBERRY BUSH VIBURNUM	4' ht.	
UP	1	<i>Ulmus parvifolia</i> 'Alee' ALLEE ELM	3" cal.	



# Sidewalk Aerial View

“2. Construction of 4 foot wide concrete sidewalks along the frontage of Eastern Boulevard is recommended.”

Memo from Daniel A. Pennington, Town Engineer dated 6/22/2020

