

2 1 - FIRST FLOOR PRESENTATION PLAN
3/64" = 1'-0"

	<p>MATERIAL: GRANITE FINISH: GREY LOCATION: ENGAGED PILASTER BASE</p>		<p>MATERIAL: WOOD PERGOLA FINISH: PAINT WHITE LOCATION: ABOVE WHOLE FOODS GLAZING</p>		<p>MATERIAL: EXISTING PLANK SIDING NEW FINISH: SHERWIN WILLIAMS 7533 KHAKI SHADE LOCATION: FIELD SIDING</p>
	<p>MATERIAL: EXISTING BRICK FINISH: WHITE WASH LOCATION: ENGAGED PILASTERS</p>		<p>MATERIAL: EXISTING STOREFRONT WINDOW GLAZING FINISH: EXISTING TO REMAIN LOCATION: RETAIL FRONTS</p>		<p>MATERIAL: EIFS FINISH: SHERWIN WILLIAMS 7528 WINDSOR GREIGE LOCATION: FASCIA</p>
	<p>MATERIAL: RUBBER 'SLATE' ROOF TILE FINISH: ENVIROSLATE LOCATION: ROOF</p>		<p>MATERIAL: EIFS FINISH: COLONIAL WHITE LOCATION: CORNICE</p>		<p>MATERIAL: EIFS/EXISTING SIDING NEW FINISH: SHERWIN WILLIAMS 7048 URBANE BRONZE LOCATION: ACCENT WALLS</p>

1 MATERIAL PALETTE
1/2" = 1'-0"

12/23/2017 4:13:03 PM C:\Users\kstronkye\Documents\1900860-ARCH_Central_kstronkye.rvt

REVISIONS	DESCRIPTION	DATE	NO

Designed: JI
Drawn: JM
Reviewed: JI
Scale: As indicated
Project No. 1900860
Date: 12/23/19

Title: OVERALL DESIGN
Sheet No.

SK-01



4 EXISTING CONDITIONS - IMAGE PART A
1/2" = 1'-0"



3 EXISTING CONDITIONS - IMAGE PART B
1/2" = 1'-0"



2 SOUTH FACADE PROPOSED RENDERING
1/4" = 1'-0"



1 SOUTH FACADE PROPOSED ELEVATION
1/4" = 1'-0"

REVISIONS	DESCRIPTION
NO	DATE
NO	DATE
NO	DATE

Designed	Author
Drawn	Author
Reviewed	Approver
Scale	As indicated
Project No.	1900860
Date	12/23/19

Title:
OVERALL DESIGN

Sheet No.

SK-02

NO	DATE	DESCRIPTION

Designed	Author
Drawn	
Reviewed	Approver
Scale	1/2" = 1'-0"
Project No.	1900860
Date	12/23/19

Title:
WEST FACADE -
WHOLE FOODS

Sheet No.

SK-03



3 WEST FACADE - EXISTING
1/2" = 1'-0"



2 WEST FACADE - PROPOSED RENDERING
1/2" = 1'-0"



1 WEST ELEVATION
1/2" = 1'-0"



4 KEY ELEVATION
1" = 30'-0"



3 ENTRY PART A - EXISTING IMAGE
1/2" = 1'-0"



5 ENTRY PART A - PROPOSED RENDERING
1/2" = 1'-0"



1 ENTRY ELEVATION PART A
1/4" = 1'-0"

REVISED	DESCRIPTION	DATE	NO.

Designed	Author
Drawn	Author
Reviewed	Approver
Scale	As indicated
Project No.	1900860
Date	12/23/19

Title:
ENTRY PART A -
WHOLE FOODS

Sheet No.

SK-04



8 KEY ELEVATION
1" = 30'-0"



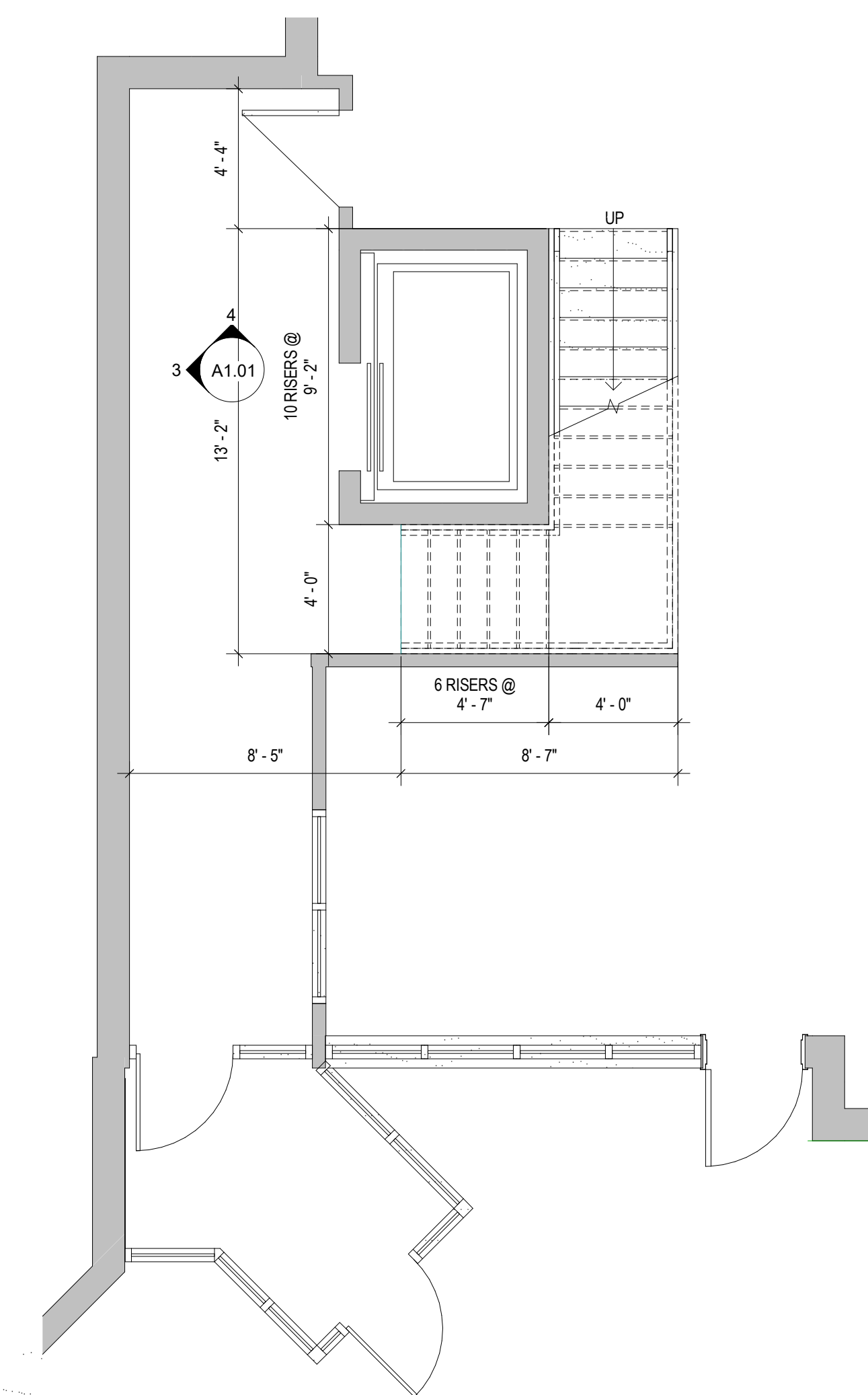
7 OFFICE ENTRY - EXISTING IMAGE
1/2" = 1'-0"



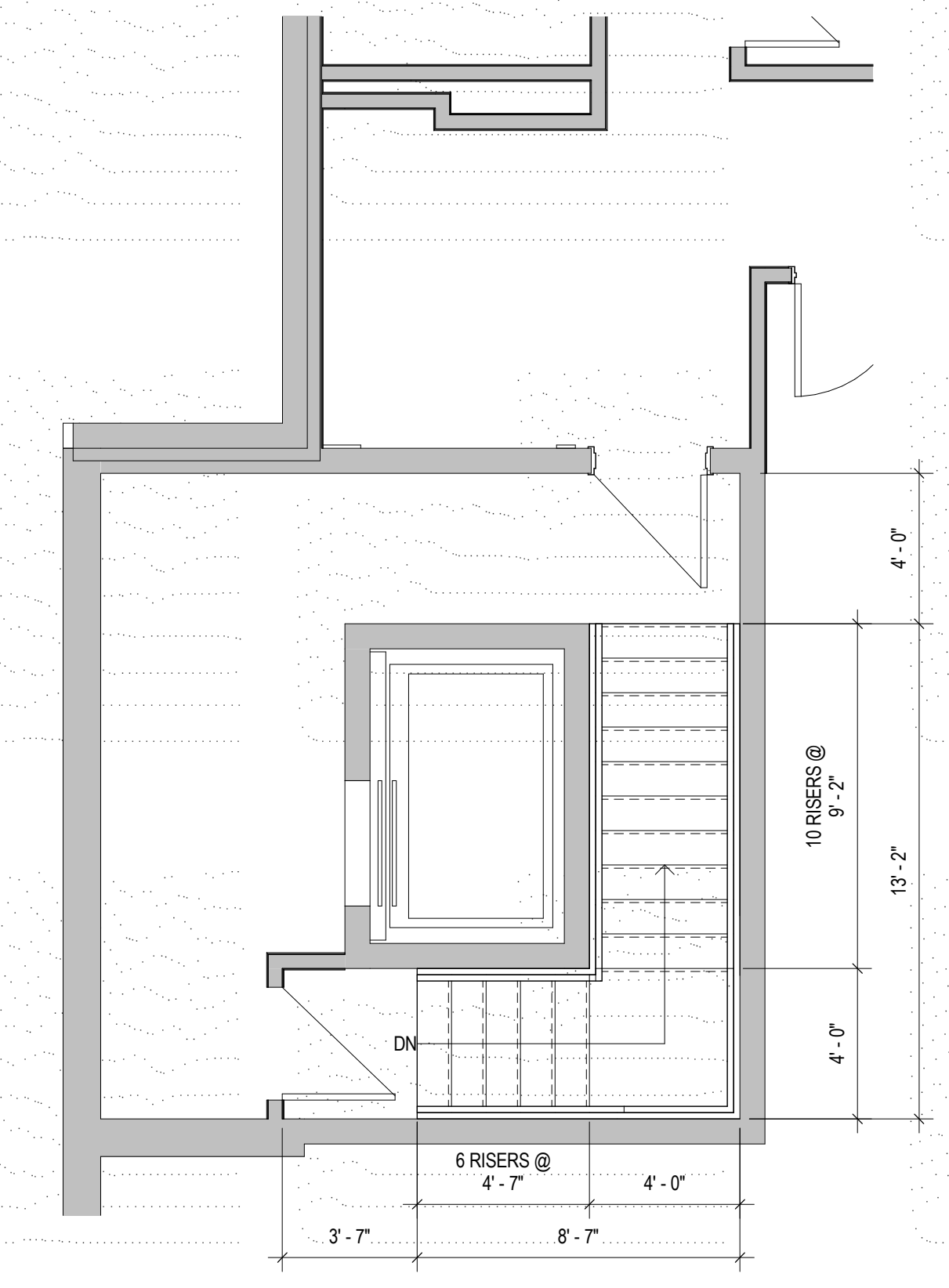
4 OFFICE ENTRY - PROPOSED RENDERING
1/2" = 1'-0"



3 OFFICE ENTRY ELEVATION
1/4" = 1'-0"



2 FIRST FLOOR LOBBY 1
1/4" = 1'-0"



1 SECOND FLOOR LOBBY 1
1/4" = 1'-0"

SHOPPES AT FOX RUN ENHANCEMENT
DESIGN/ARCHITECTURE
55 WELLES STREET, GLASTONBURY, CT

NO.	DATE	DESCRIPTION

Designed: Designer
Drawn: Author
Reviewed: Approver
Scale: As indicated
Project No.: 1900860
Date: 12/23/19

Title:
ENTRY PART B -
OFFICE ENTRY

Sheet No.

SK-05



4 KEY ELEVATION
1" = 30'-0"



3 ENTRY PART C - EXISTING IMAGE
1/2" = 1'-0"



2 ENTRY PART C - PROPOSED RENDERING
1/2" = 1'-0"



1 ENTRY ELEVATION PART C
3/32" = 1'-0"

NO.	DATE	DESCRIPTION

Designed		Designer	
Drawn		Author	
Reviewed		Approver	
Scale		As indicated	
Project No.		1900860	
Date		12/23/19	

Title:
ENTRY PART C

Sheet No.

SK-06



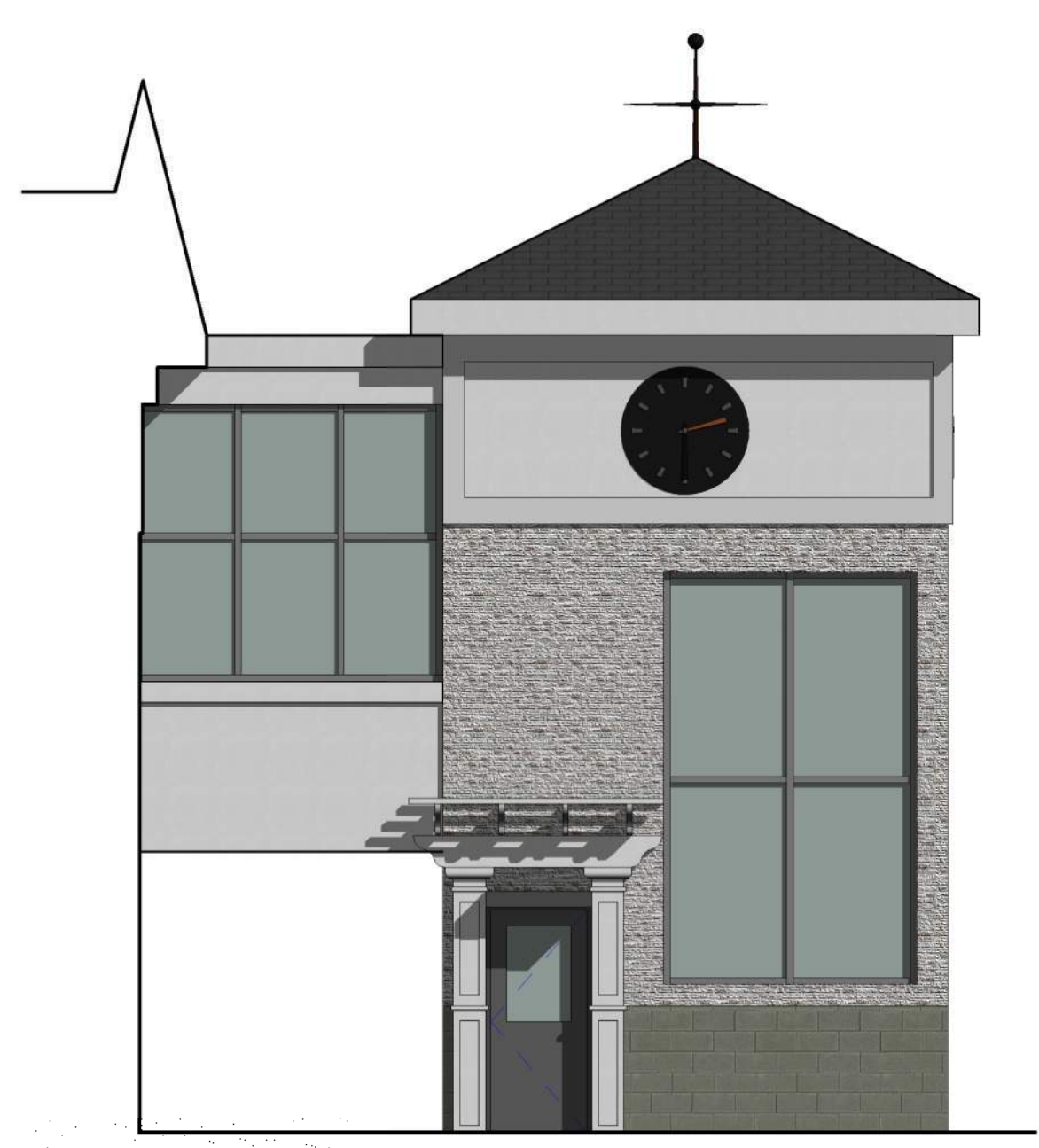
8 KEY ELEVATION
1" = 30'-0"



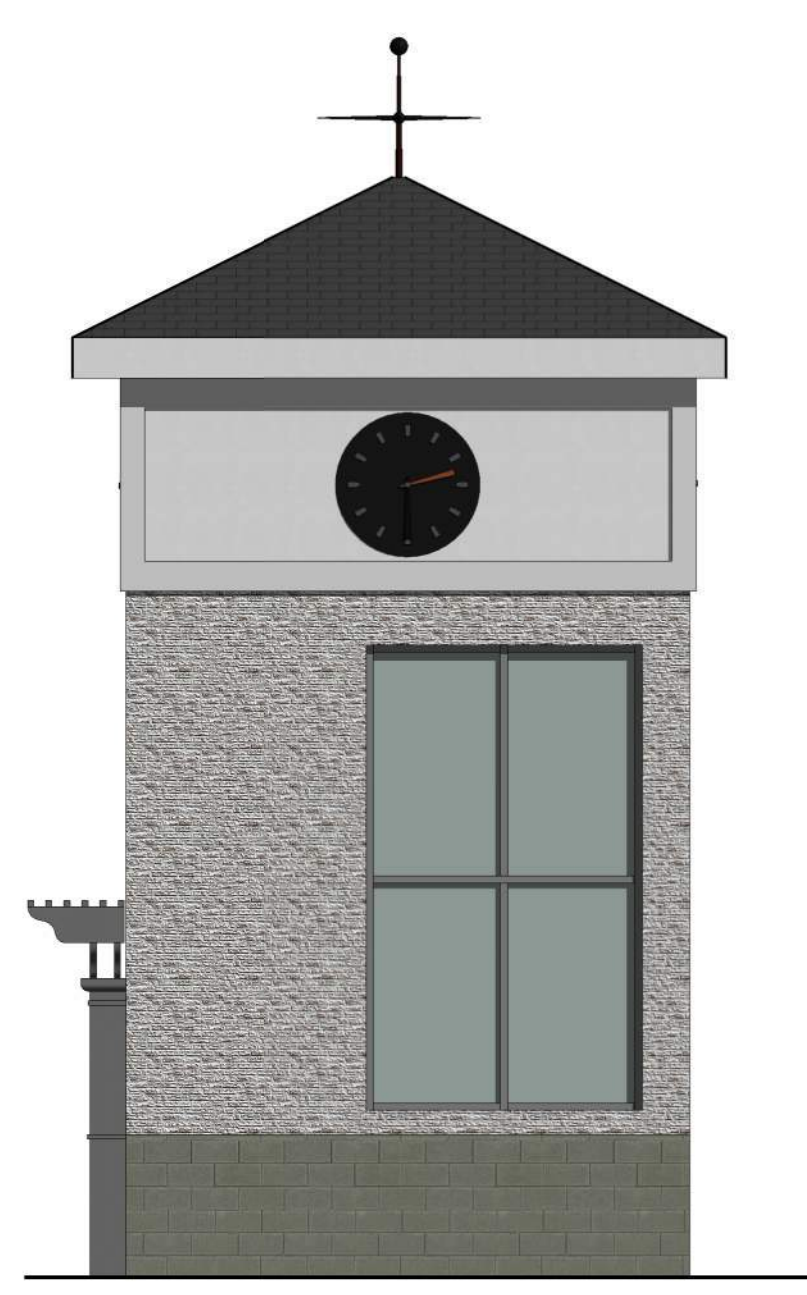
7 LOBBY TOWER - EXISTING IMAGE
1/2" = 1'-0"



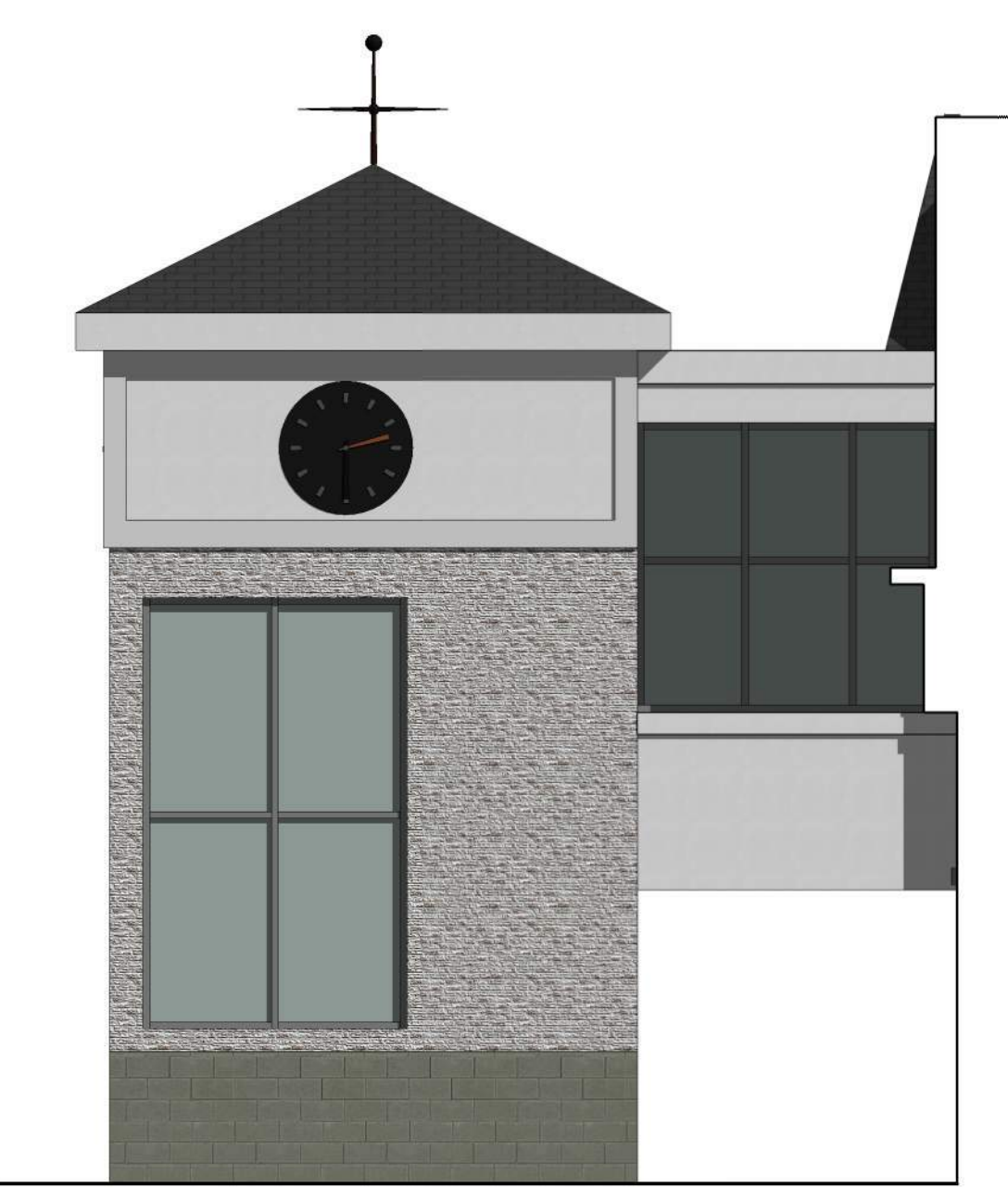
6 LOBBY TOWER - PROPOSED RENDERING
1/2" = 1'-0"



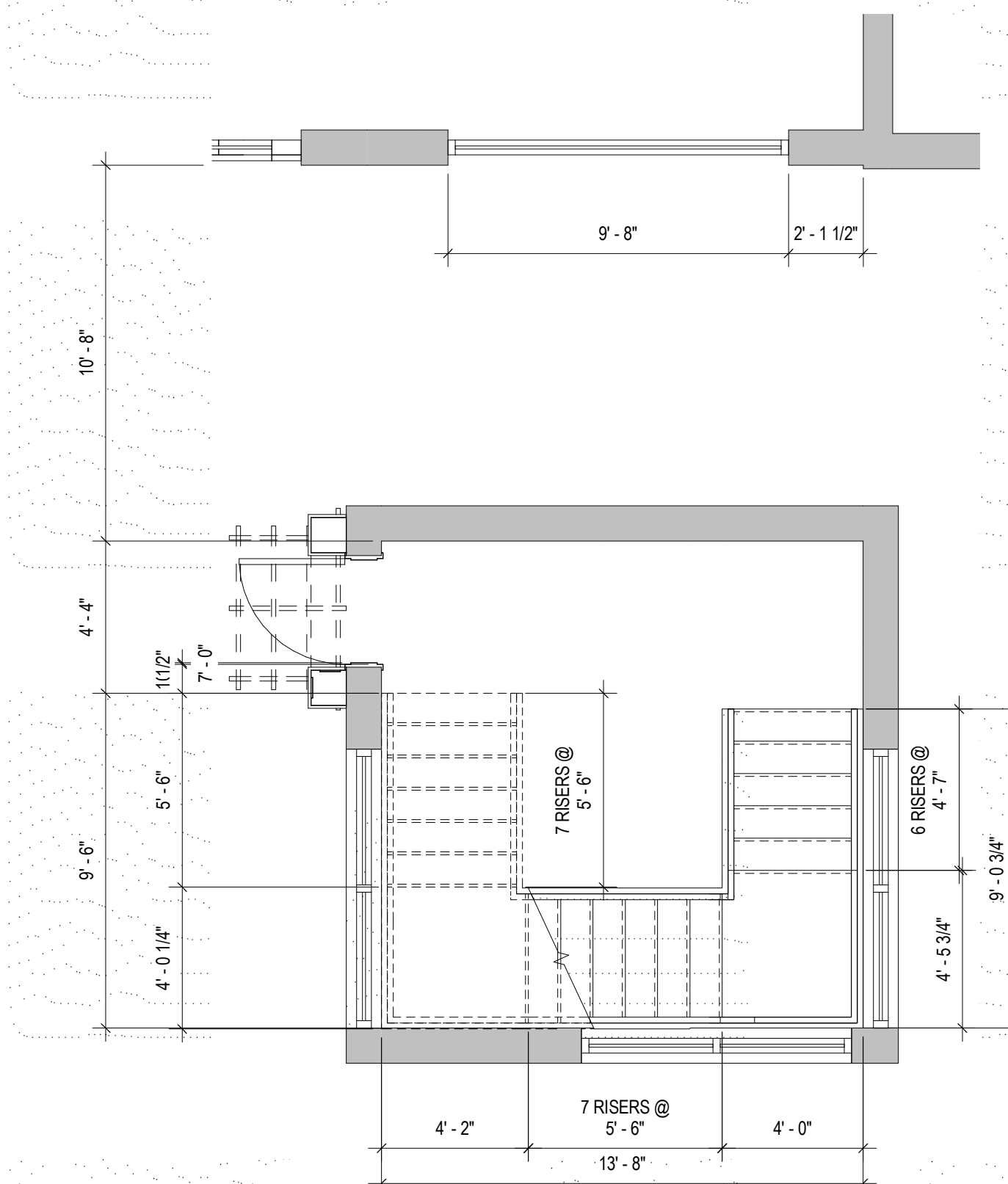
5 LOBBY TOWER - WEST ELEVATION
3/16" = 1'-0"



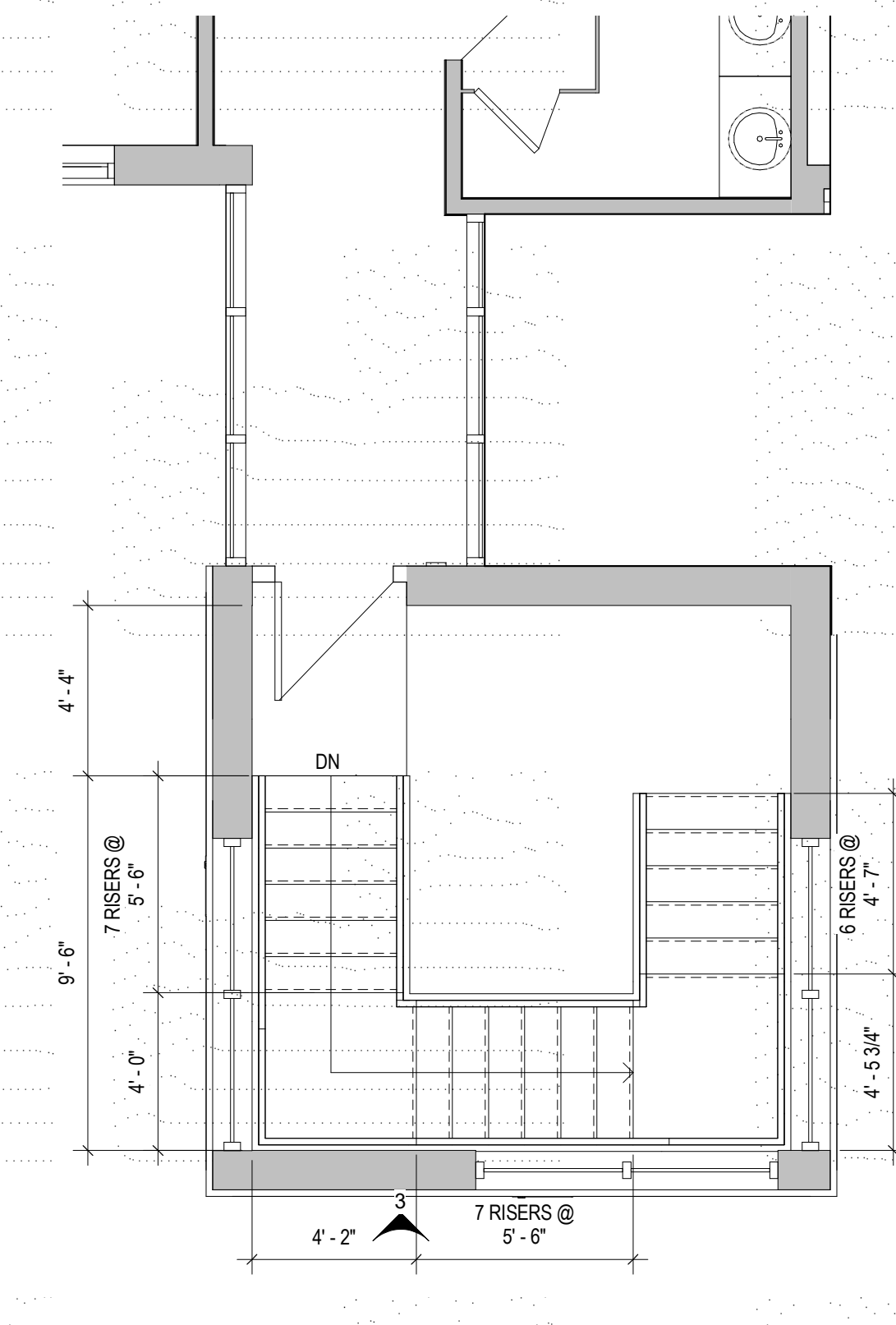
4 LOBBY TOWER - SOUTH ELEVATION
3/16" = 1'-0"



3 LOBBY TOWER - EAST ELEVATION
3/16" = 1'-0"



2 FIRST FLOOR LOBBY TOWER
1/4" = 1'-0"



1 SECOND FLOOR LOBBY TOWER
1/4" = 1'-0"

SHOPPES AT FOX RUN ENHANCEMENT
DESIGN/ARCHITECTURE
55 WELLES STREET, GASTONBURY, CT

NO.	DATE	DESCRIPTION

Designed: Author
Drawn: Author
Reviewed: Approver
Scale: As indicated
Project No: 1900860
Date: 12/23/19

Title: LOBBY TOWER

Sheet No.

SK-07



5 KEY ELEVATION
1" = 30'-0"



4 ENTRY PART E - EXISTING FACADE
1/2" = 1'-0"



3 ENTRY PART E - PROPOSED RENDERING AT PETCO
1/2" = 1'-0"



2 ENTRY PART E - PROPOSED ELEVATION AT PETCO
1/2" = 1'-0"

SHOPPES AT FOX RUN ENHANCEMENT
DESIGN/ARCHITECTURE
55 WELLES STREET, GASTONBURY, CT

NO.	DATE	DESCRIPTION

Designed	Author
Drawn	
Reviewed	Approver
Scale	As indicated
Project No.	1900860
Date	12/23/19

Title:
ENTRY PART E

Sheet No.

SK-08



5 KEY ELEVATION
1" = 30'-0"



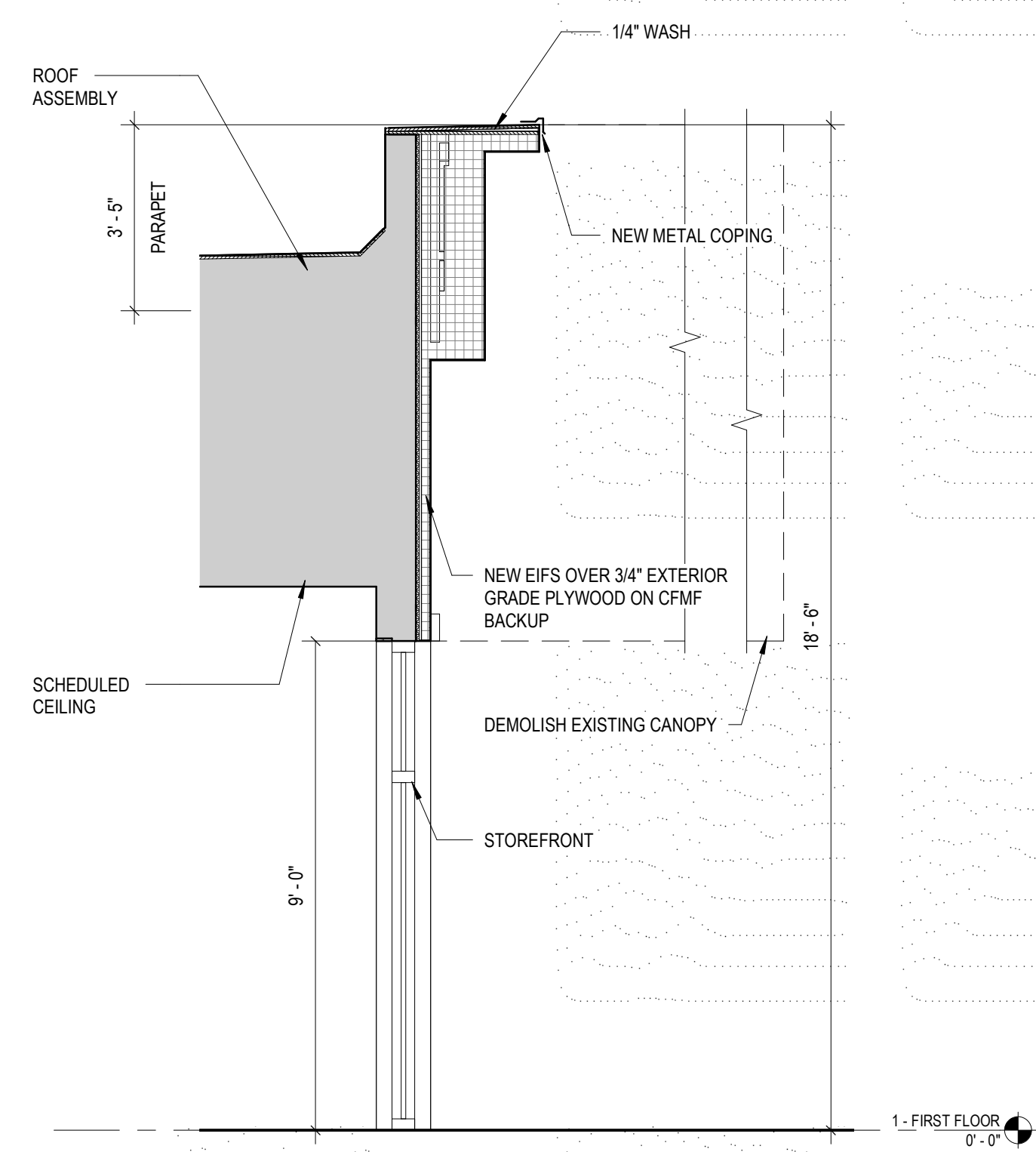
3 EXISTING ENTRY PART F - MATTRESS FIRM
1/2" = 1'-0"



4 ENTRY PART F - PROPOSED RENDERING
1/2" = 1'-0"



2 ENTRY ELEVATION PART F AT PETCO
3/16" = 1'-0"



1 WALL SECTION THROUGH EIFS
3/8" = 1'-0"

SHOPPES AT FOX RUN ENHANCEMENT
DESIGN/ARCHITECTURE
55 WELLES STREET, GLASTONBURY, CT

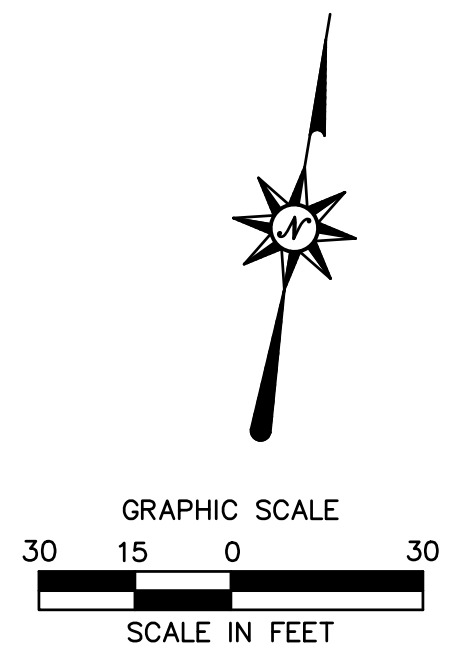
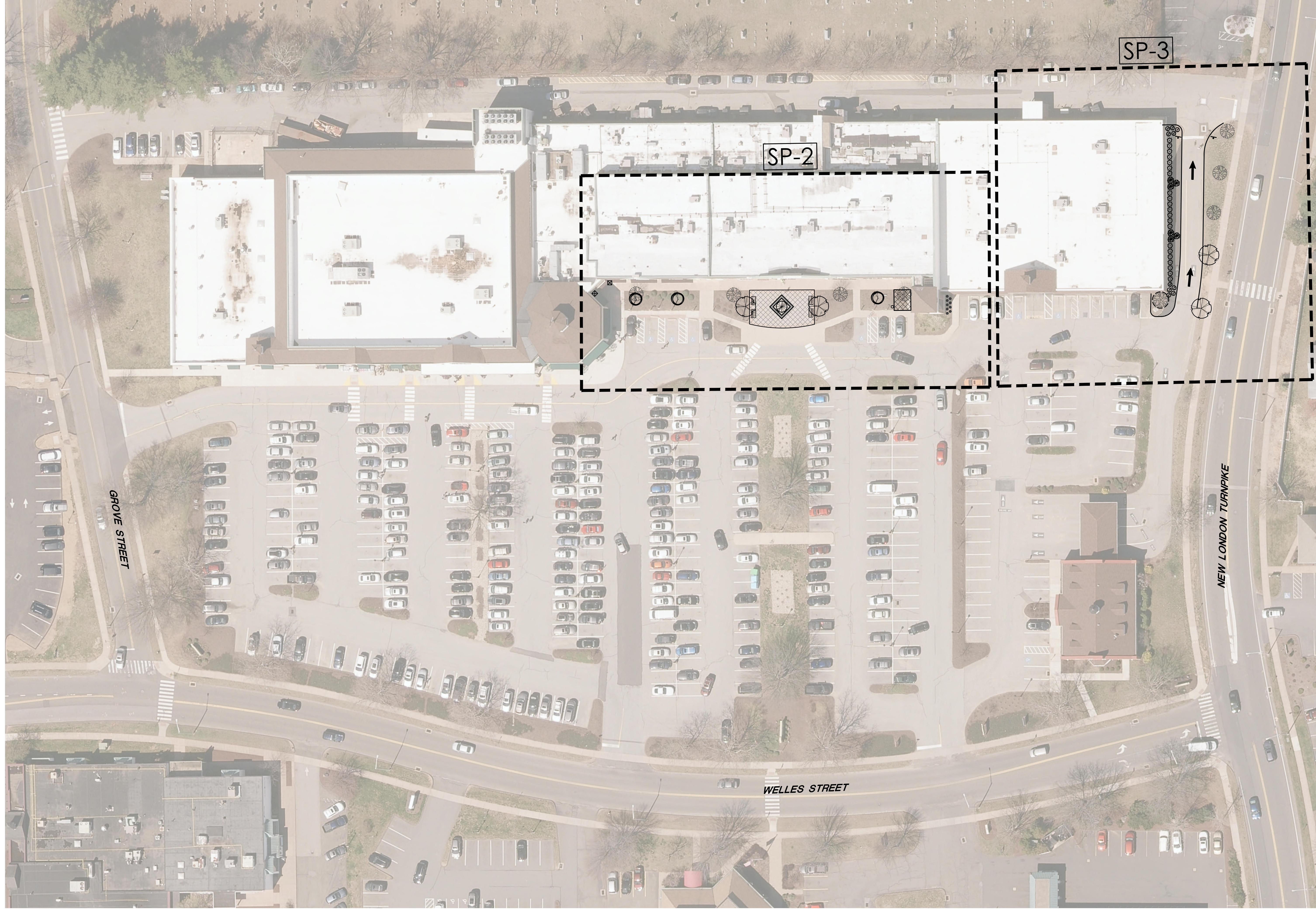
REVISIONS	DESCRIPTION	DATE	NO.

Designed:	Author:
Drawn:	Author:
Reviewed:	Approver:
Scale:	As indicated
Project No.:	1900860
Date:	12/23/19

Title:
ENTRY PART F

Sheet No.

SK-09



THE SHOPPES AT FOX RUN
25-50 WELLES STREET
GLASTONBURY, CT

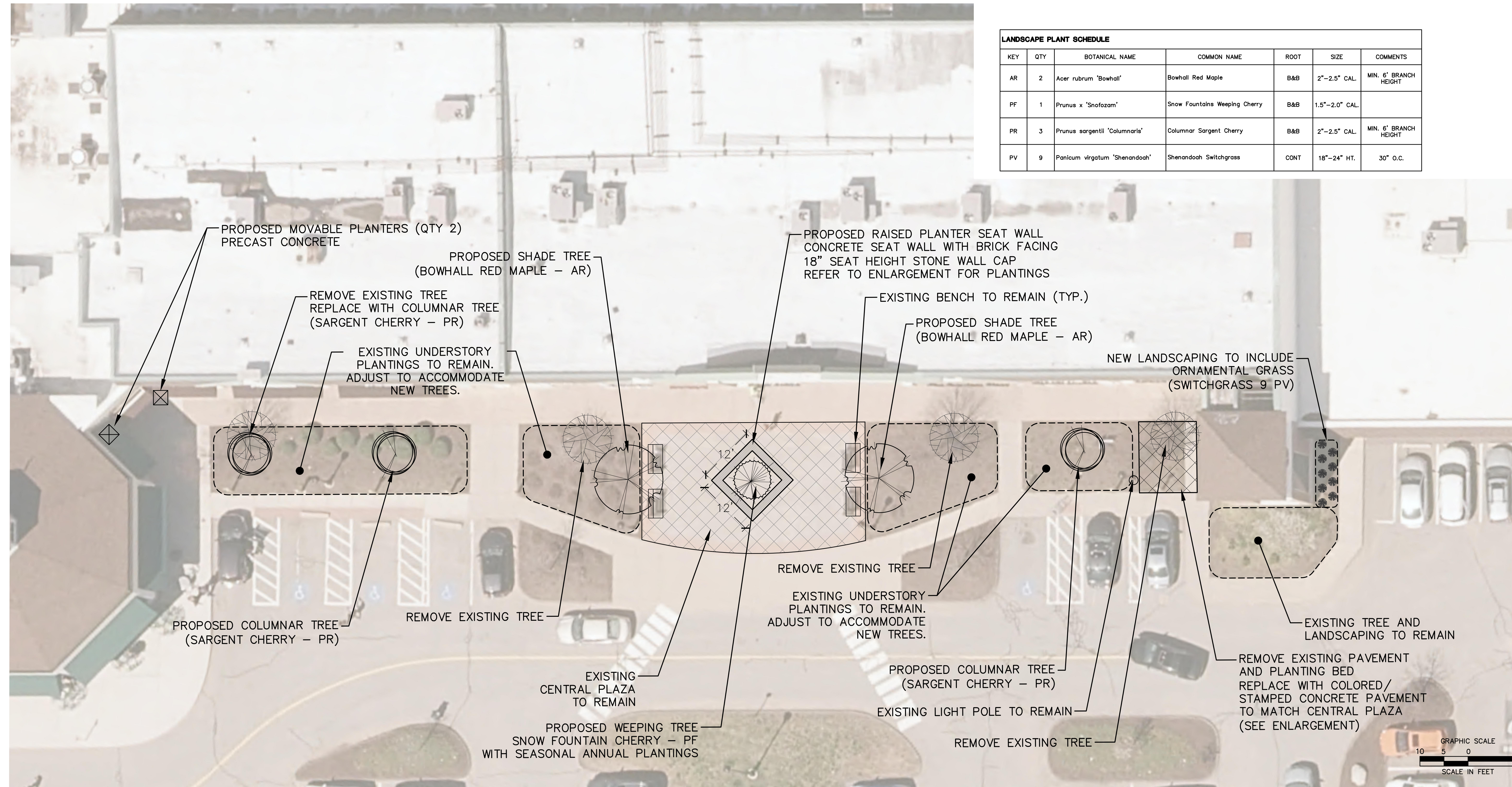
REVISIONS
No. Date Description
1. 02/10/2020 REVISIONS PER TOWN COMMENTS
2. 02/26/2020 REVISIONS PER TOWN COMMENTS

NOT FOR CONSTRUCTION

Designed: W.E.V.
Drawn: W.E.V.
Reviewed: 1"=30'
Project No.: 1900640
Date: 02/10/2020
CAD File: SK190066003

Title
**OVERALL
SITE PLAN**

Sheet No.
SP-1

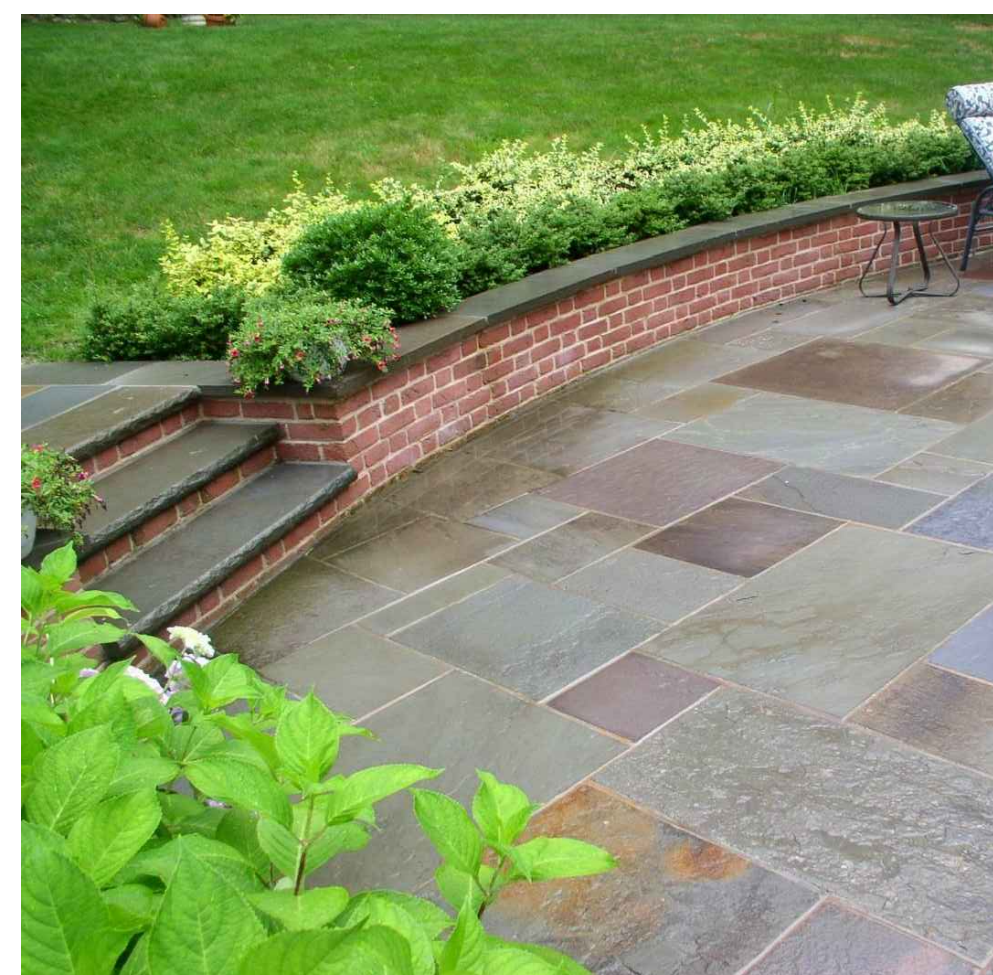


LANDSCAPE PLANT SCHEDULE						
KEY	QTY	BOTANICAL NAME	COMMON NAME	ROOT	SIZE	COMMENTS
AR	2	Acer rubrum 'Bowhall'	Bowhall Red Maple	B&B	2"-2.5" CAL.	MIN. 6' BRANCH HEIGHT
PF	1	Prunus x 'Shofazam'	Snow Fountains Weeping Cherry	B&B	1.5"-2.0" CAL.	
PR	3	Prunus sargentii 'Columnaris'	Columnar Sargent Cherry	B&B	2"-2.5" CAL.	MIN. 6' BRANCH HEIGHT
PV	9	Panicum virgatum 'Shenandoah'	Shenandoah Switchgrass	CONT	18"-24" HT.	30" O.C.

THE SHOPES AT FOX RUN
25-50 WELLES STREET
GLASTONBURY, CT



EXISTING CENTRAL PLAZA



BRICK-FACED SEAT WALL WITH STONE CAP



COLUMNAR SARGENT CHERRY



BOWHALL RED MAPLE



SNOW FOUNTAINS WEEPING CHERRY

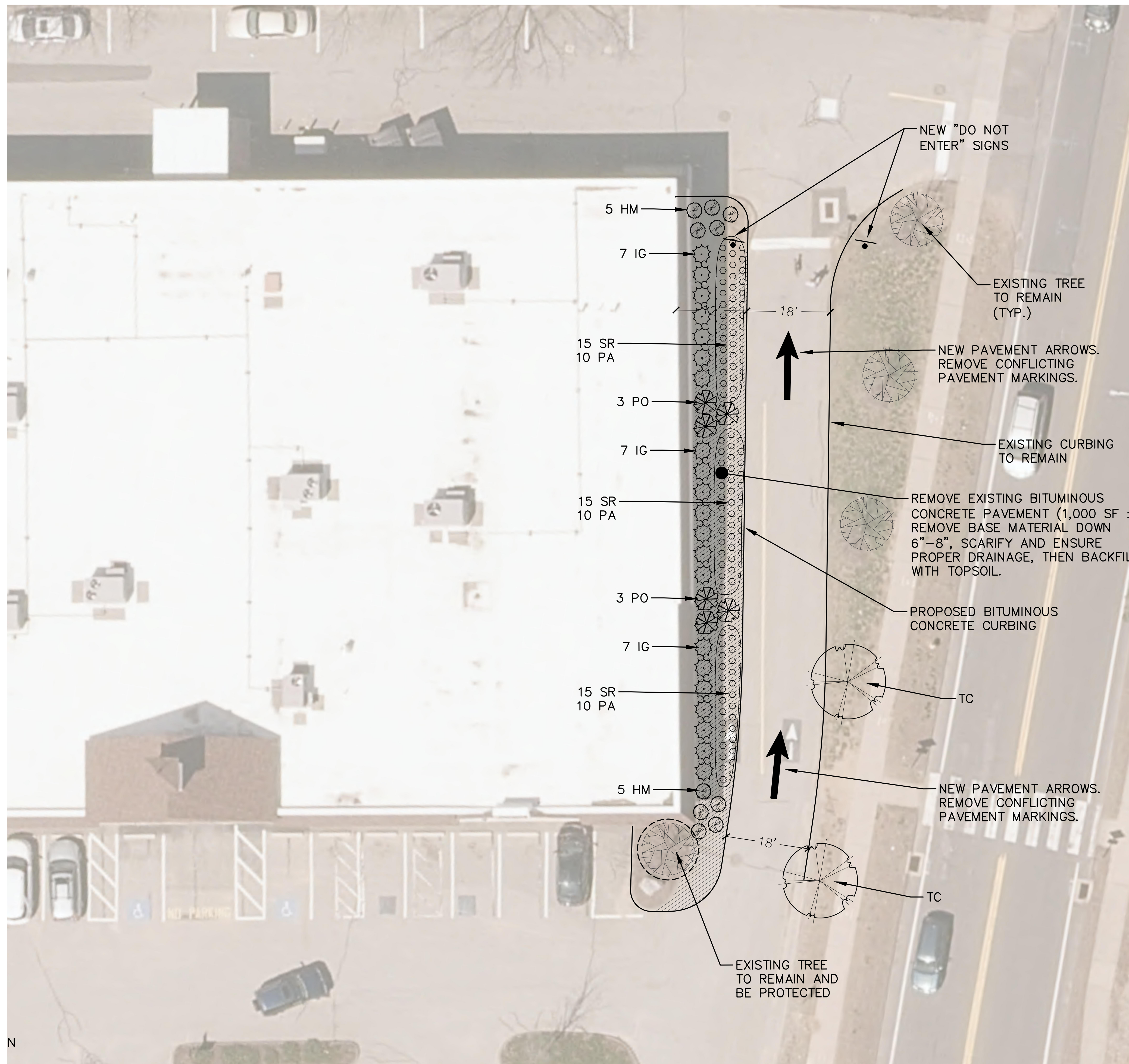
REVISIONS
No. Date Description
1. 02/10/2020 REVISIONS PER TOWN COMMENTS
2. 02/26/2020 REVISIONS PER TOWN COMMENTS

NOT FOR CONSTRUCTION

Designed: W.E.V.
Drawn: W.E.V.
Reviewed: 1"=10'
Project No.: 1900640
Date: 02/10/2020
CAD File: SK190064003

Title: **SITE PLAN**

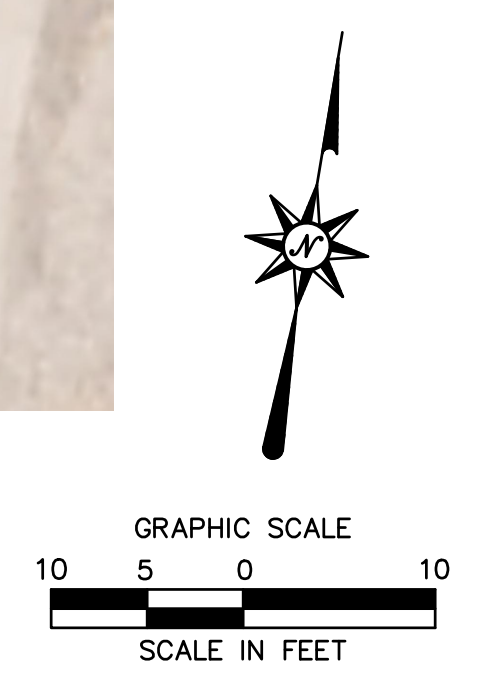
Sheet No.: **SP-2**



KEY	QTY	BOTANICAL NAME	COMMON NAME	ROOT	SIZE	COMMENTS
TC	2	<i>Tilia cordata</i> 'Greenspire'	Greenspire Littleleaf Linden	B&B	2"-2.5" CAL.	6' MIN. BRANCH HEIGHT
HM	10	<i>Hydrangea macrophylla</i> 'Wedding Gown'	Wedding Gown Hydrangea	CONT	24"-30" HT.	4' O.C.
IG	21	<i>Ilex glabra</i> 'Shamrock'	Shamrock Inkberry	CONT	24"-30" HT.	4' O.C.
PO	6	<i>Physocarpus opulifolius</i> 'Monia'	Diabolo Ninebark	CONT	30"-36" HT.	5' O.C.
SR	45	<i>Sedum</i> 'Dazzleberry'	SunSparkler Dazzleberry Sedum	CONT	12"-18" HT.	18" O.C.
PA	30	<i>Pennisetum alopecuroides</i> 'Homein'	Dwarf Fountain Grass	CONT	12"-18" HT.	30" O.C.



EXISTING SITE PHOTOS



THE SHOPS AT FOX RUN
25-50 WELLES STREET
GLASTONBURY, CT

REVISIONS
No. Date Description
1. 02/10/2020 REVISIONS PER TOWN COMMENTS
2. 02/26/2020 REVISIONS PER TOWN COMMENTS

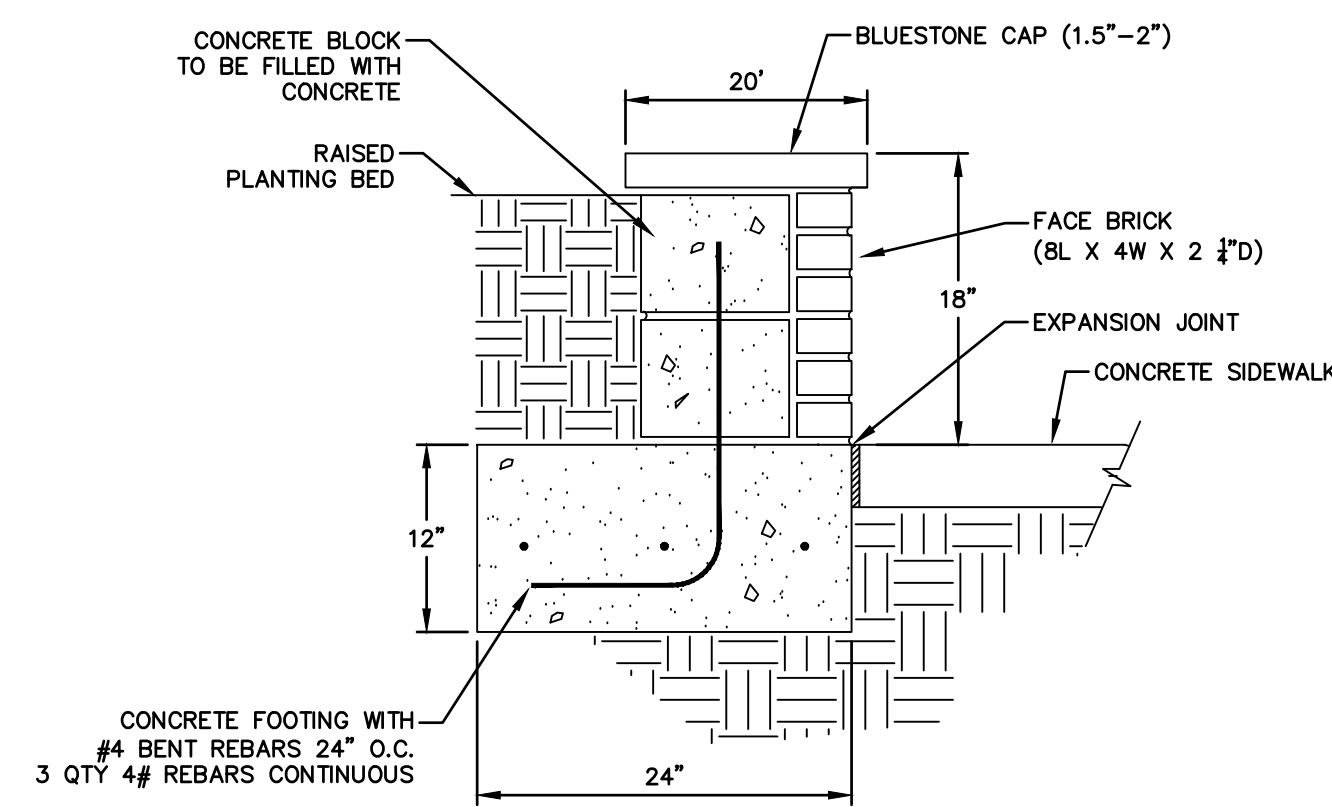
NOT FOR CONSTRUCTION

Designed: W.E.V.
Drawn: W.E.V.
Reviewed: 11-10
Project No.: 1900660
Date: 02/10/2020
CAD File: SK190066003

Title: **SITE PLAN**

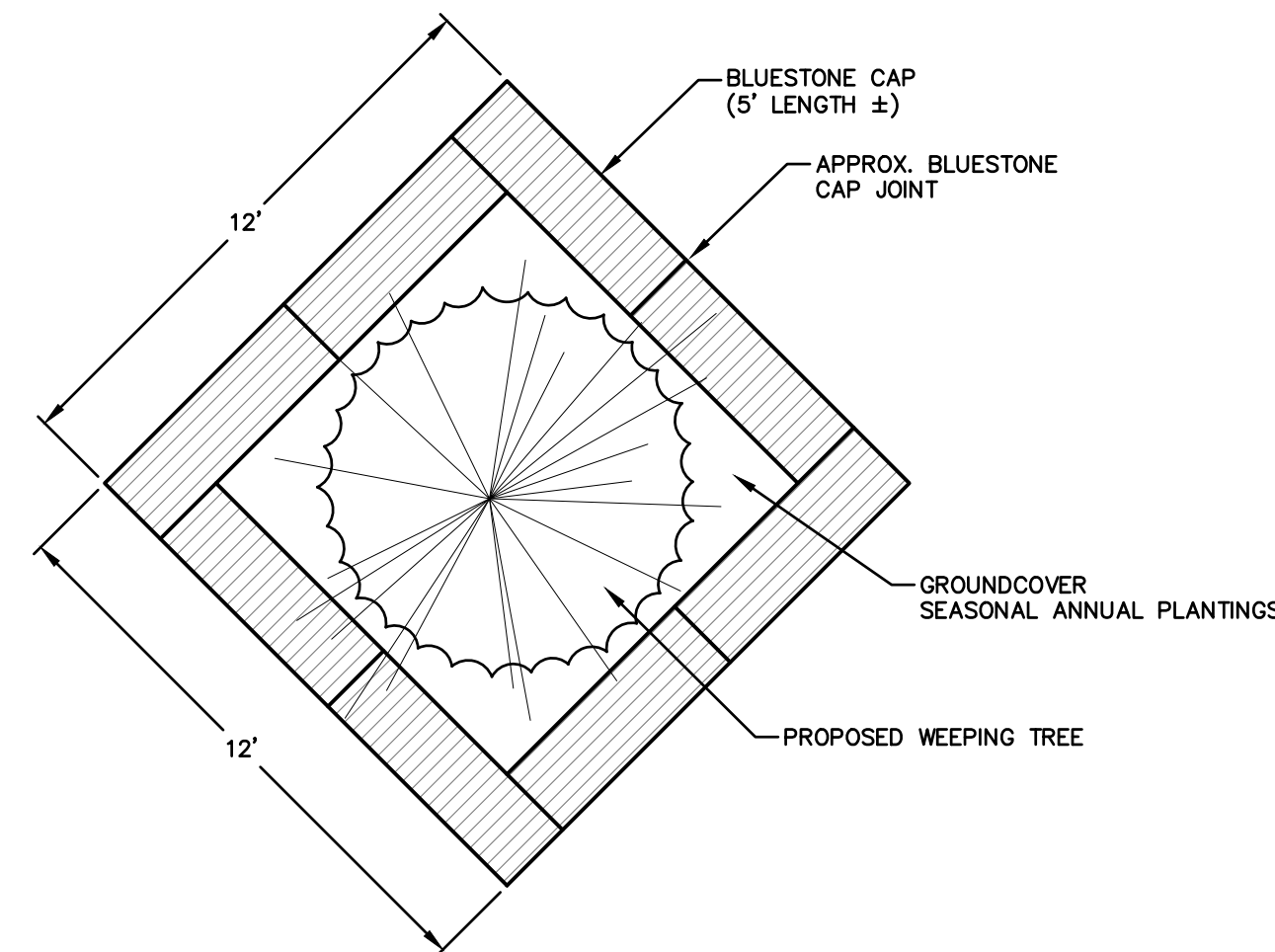
2/26/2020 10:04:16 AM C:\PROJECTS\1900660\DWG\1900660-03-01.DWG

© 2020 BL COMPANIES, INC. THESE DRAWINGS SHALL NOT BE UTILIZED BY ANY PERSON, FIRM OR CORPORATION WITHOUT THE SPECIFIC WRITTEN PERMISSION OF BL COMPANIES.



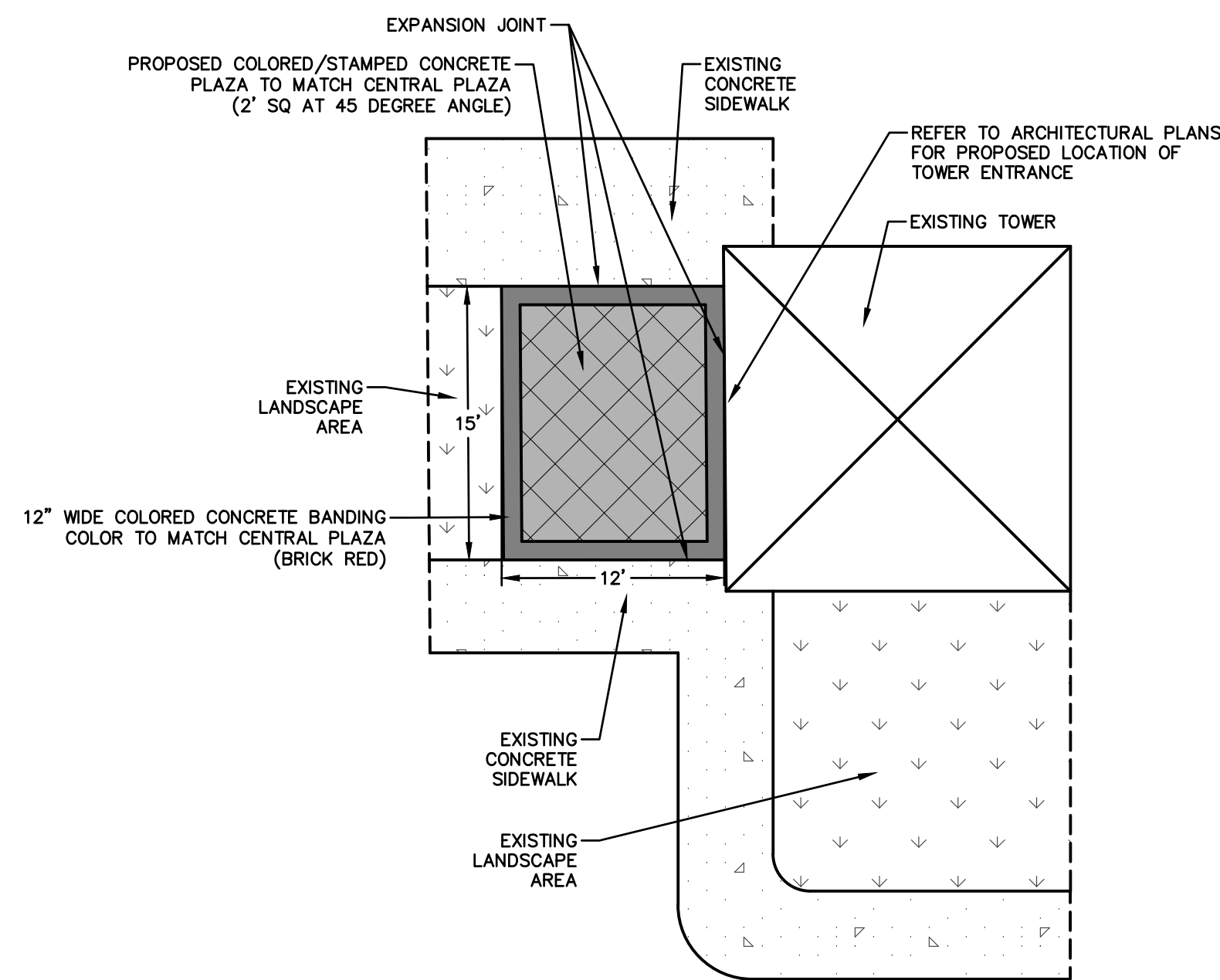
SEAT WALL

N.T.S.



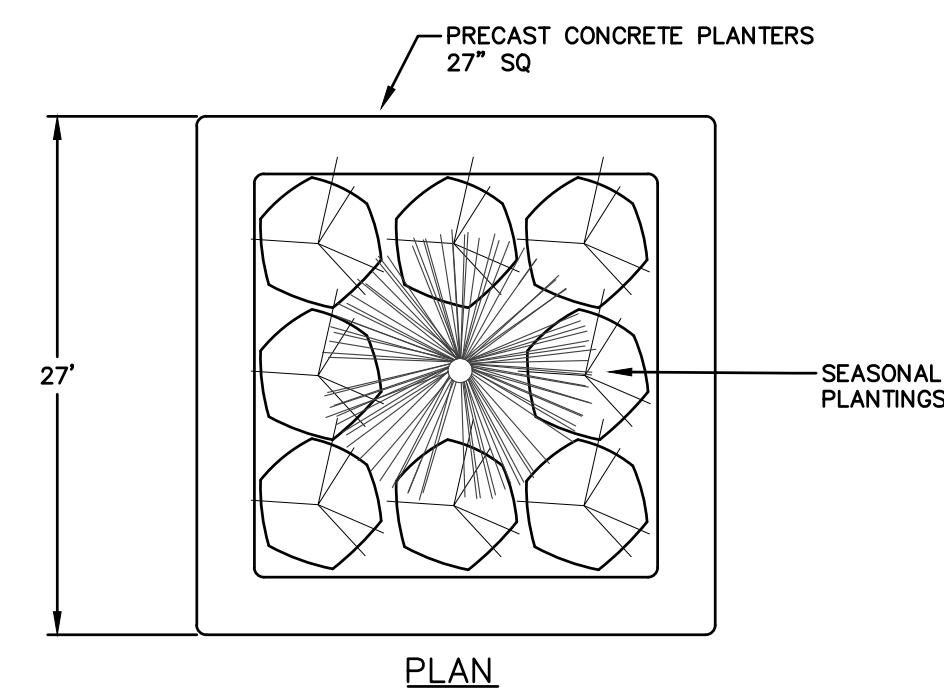
RAISED PLANTER ENLARGEMENT

N.T.S.

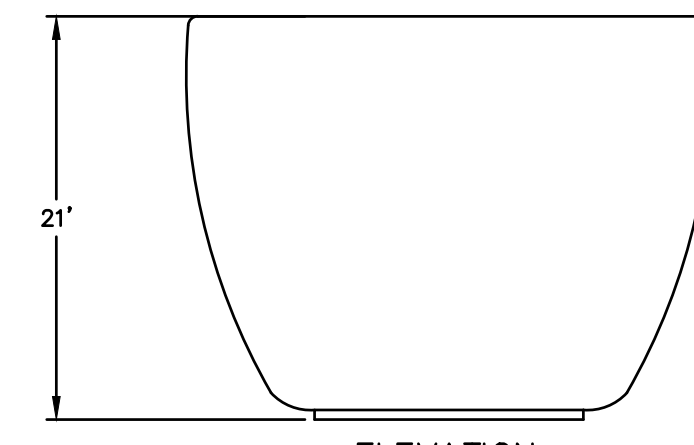


PAVEMENT IMPROVEMENTS AT TOWER

N.T.S.



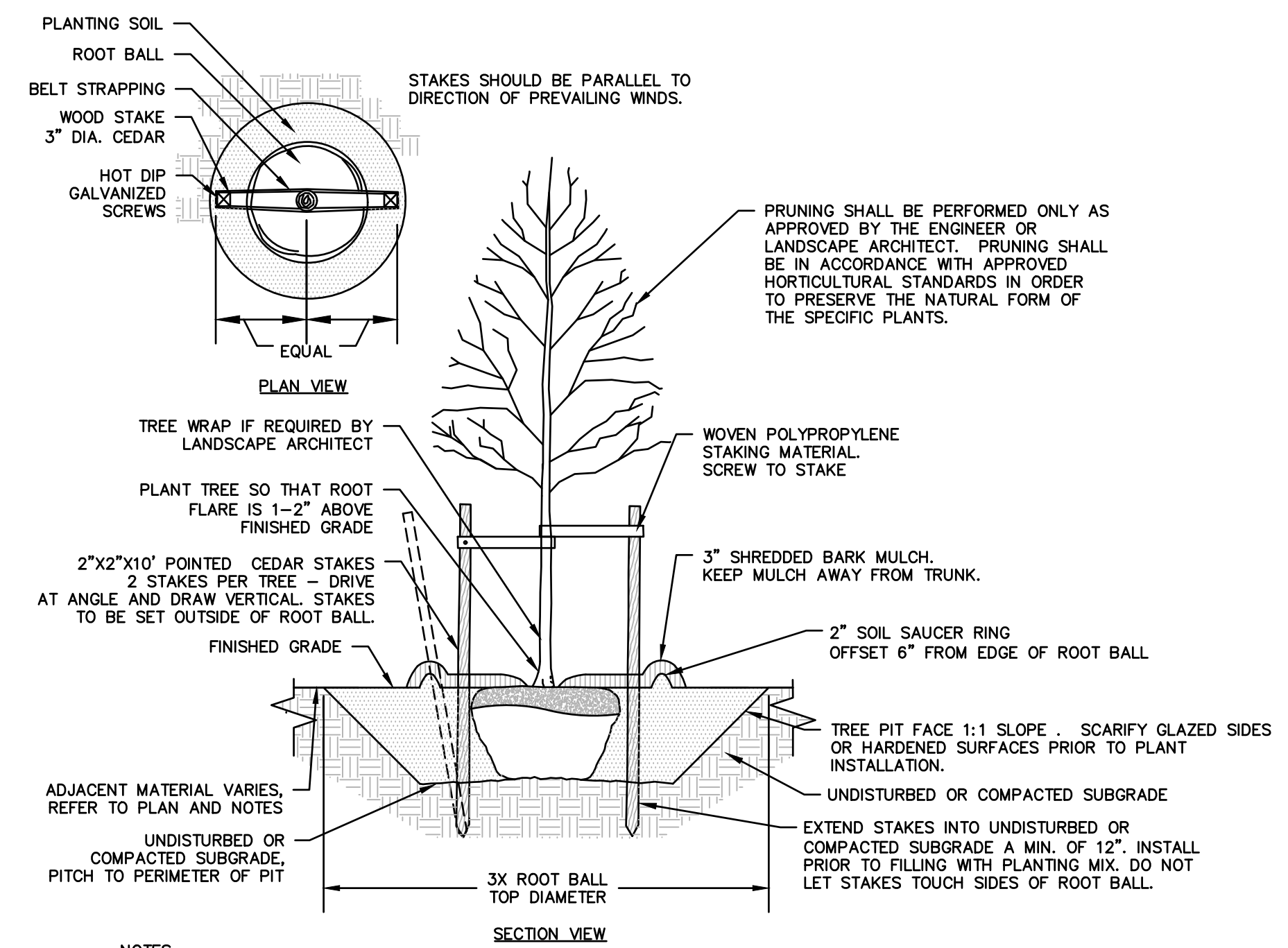
PLAN



ELEVATION

MOVABLE PLANTERS - PRECASE CONCRETE

N.T.S.



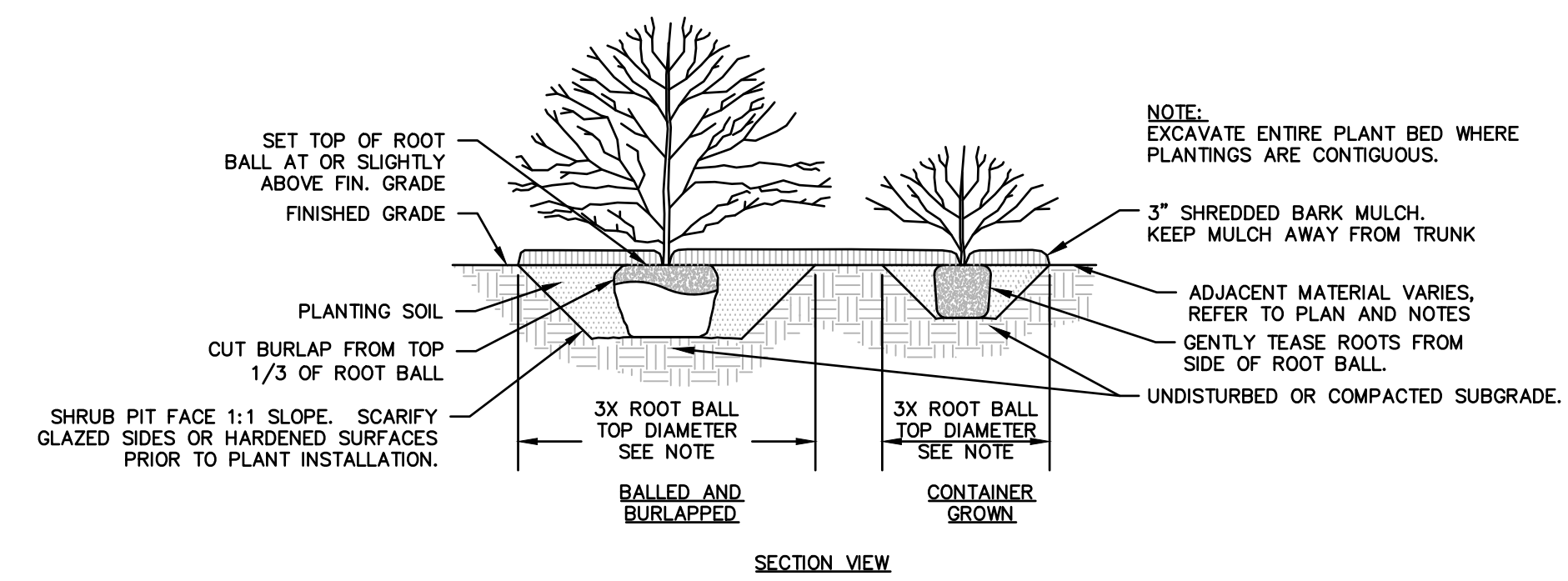
SECTION VIEW

NOTES:

1. STAKING FOR TREES ON 4:1 SLOPES OR LESS THAN 3" CALIPER TO BE PERFORMED AT CONTRACTORS DISCRETION.
2. WOVEN POLYPROPYLENE STAKING MATERIAL SHALL BE DEEPROOF ARBORITE (GREEN) OR APPROVED EQUIVALENT. MATERIAL SHALL BE LOOPED AROUND TREE THROUGH EACH OTHER, TWISTED, AND SECURED TO THE STAKE. INSTALL SPECIFIED MATERIAL IN ACCORDANCE WITH MANUFACTURER'S DIRECTIONS.
3. BEFORE IN HOLE, REMOVE BOTTOM OF CAGE. ONCE IN HOLE, REMOVE REST OF CAGE FROM ROOT BALL. REMOVE TWINE AND BURLAP FROM TOP 1/3 OF ROOT BALL - SCORE REMAINING 2/3 OF BURLAP. IF BURLAP IS SYNTHETIC OR HAS BEEN TREATED WITH ANTI-DESICCANT, COMPLETELY REMOVE IT FROM ROOT BALL.

DECIDUOUS TREE PLANTING

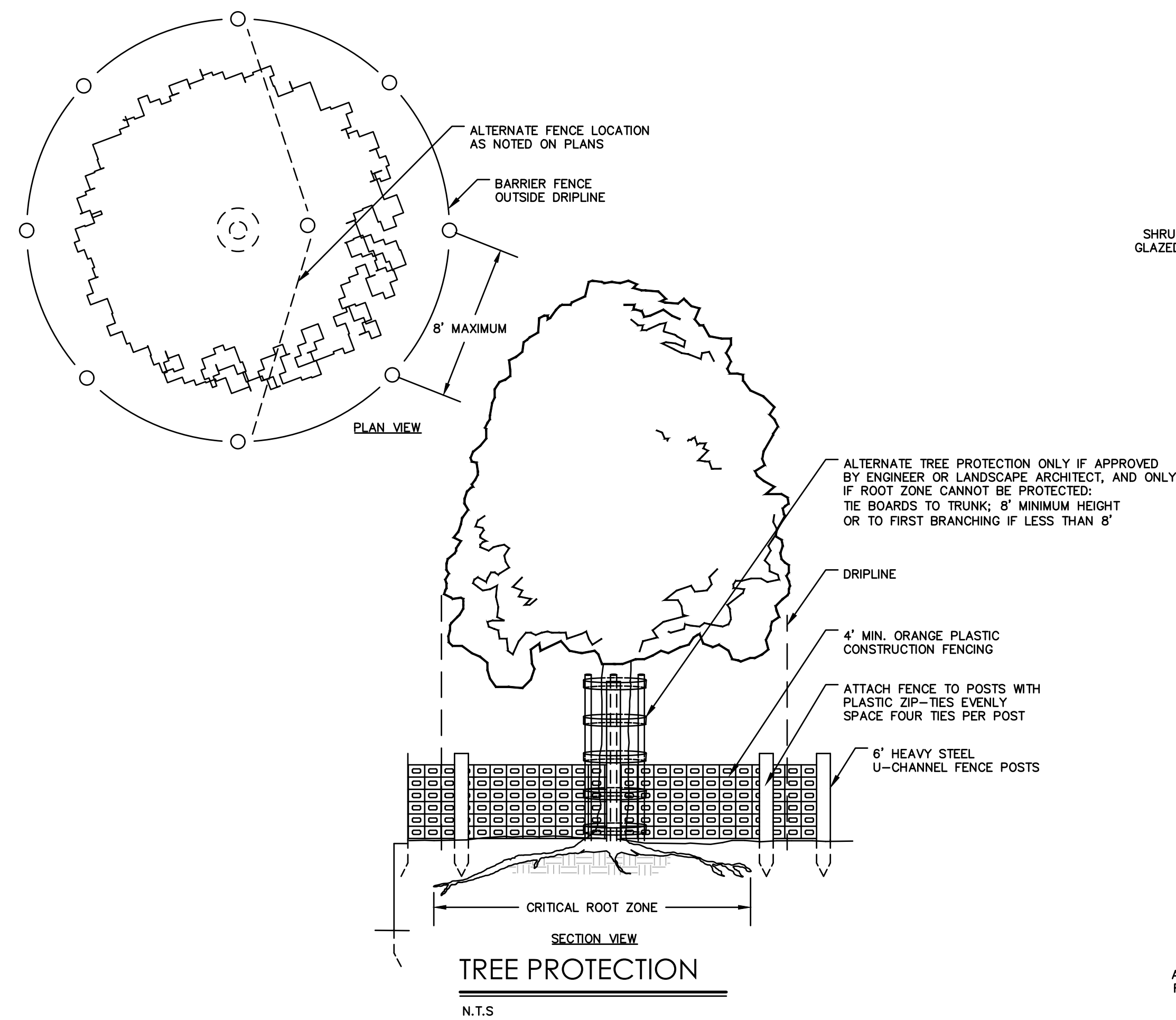
N.T.S.



SECTION VIEW

SHRUB PLANTING

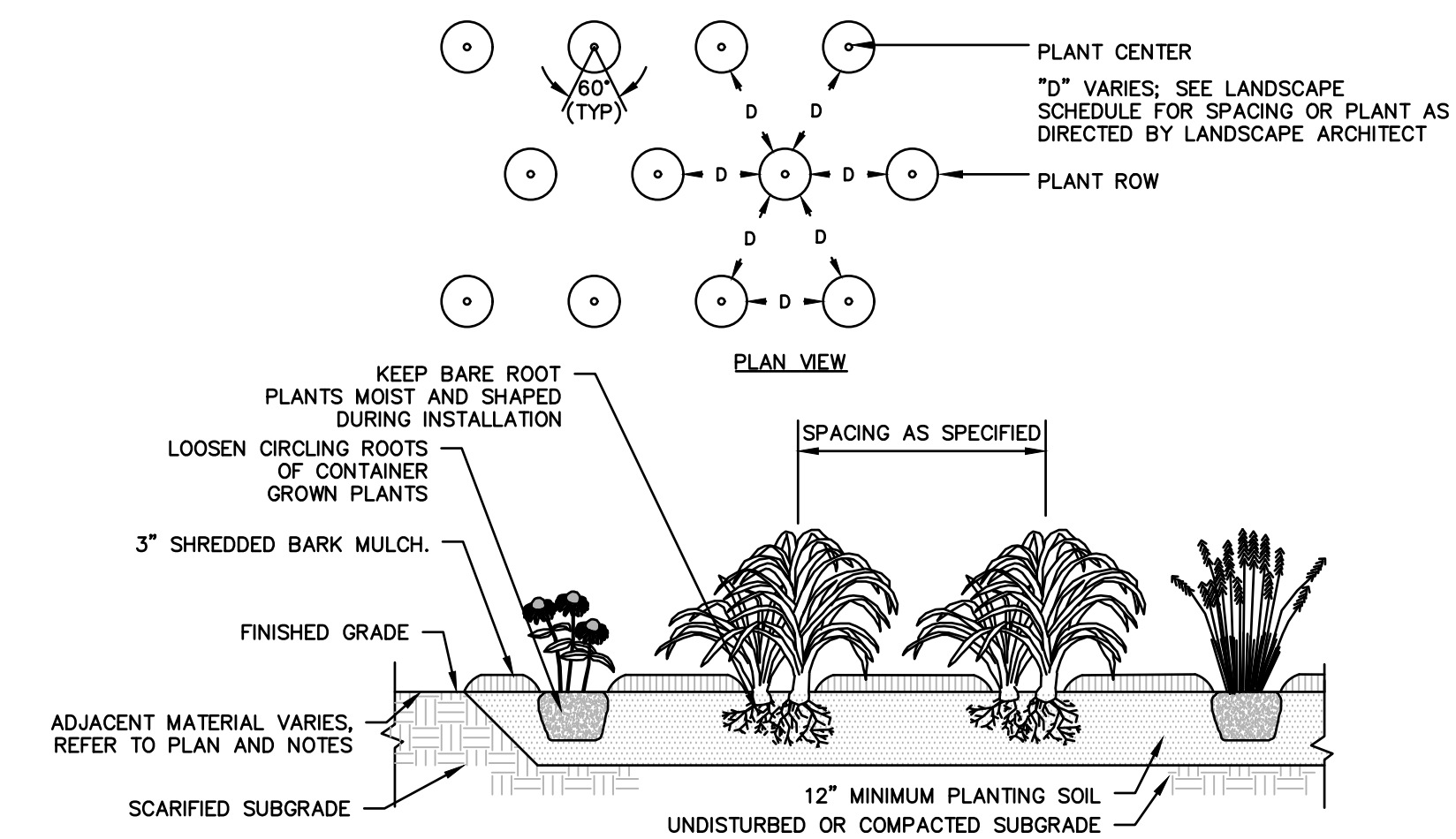
N.T.S.



SECTION VIEW

TREE PROTECTION

N.T.S.



SECTION VIEW

GROUNDCOVER PLANTING

N.T.S.