



Town of Glastonbury

2155 MAIN STREET • P.O. BOX 6523 • GLASTONBURY, CT 06033-6523 • (860) 652-7500
FAX (860) 652-7505

Richard J. Johnson
Town Manager

ITEM #7
02-25-2020 Meeting

February 21, 2020

The Glastonbury Town Council
2155 Main Street
Glastonbury, CT 06033

Re: Town Manager's Report

Dear Council Members:

The following will keep you up to date on various topics.

1. Riverfront Park

As part of continuing efforts to enhance recreation opportunities available at the Riverfront Park, Glastonbury will be working with Slipaway River Tours to use the Town public dock as a pick up/drop off location for Riverfront rides, tours and excursions. This will be coordinated on a revenue sharing basis similar to current programs with LL Bean and Riverfront Recapture.

2. Arrigoni Bridge

The attached press release by ConnDOT describes the schedule and background for rehabilitation of the Arrigoni Bridge approach as related to intersections in Middletown and Manchester. For Glastonbury residents who may travel this route, the press release is posted to the Town website.

3. Facilities Study

I was asked to comment on the scope of a potential facilities study. Such a study would evaluate Education and Town buildings on such factors as efficient use of space, opportunities for consolidation, updates and modernization, building limitations and similar factors. This could include order of magnitude costs to achieve recommendations or possible cost savings as applicable.

4. Open Space – Land Trust Taxes

Council Member Osgood asked a question on possible Council action to establish a tax exemption for properties partially transferred to land trusts. In some cases, a property owner will transfer interest in a particular parcel over a series of years. This is not typically a conveyance until the various phased interest are completed. To my knowledge, as confirmed with the Town Attorney, state enabling legislation does not allow for such a local option.

5. Main Street Sidewalks

This involves the sidewalk connection between Mallard Drive and Stockade Road along Main Street. As options are fine-tuned over coming weeks, I will ask Council to schedule a public information hearing with notice to abutting property owners so that the preferred approach can be identified. This will then require a formal public hearing with action.

6. Materials Innovation and Recycling Authority (MIRA)

MIRA CEO, Tom Kirk, will attend the March 10th Council meeting to present an overview of planning for an updated or new Trash to Energy Plant. This will bring Council up to date on deliberations and planning concerning this important topic.

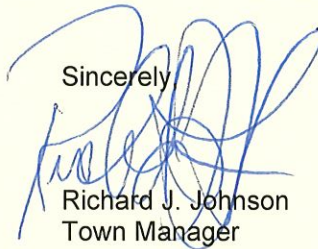
7. Bond Refunding

The bond refunding attracted 8 respondents with a low interest cost of 0.84 %. Prospective savings total \$517,000 which exceeds the initial estimate of \$400,000. The savings will smooth the annual cost increase of the \$10.4M bond issue for land and library planned for coming months. A great result for Glastonbury.

8. Library

The addition to the library approved at referendum in November 2018 is proceeding through the design and local approval process. An update will be presented to Council on Tuesday evening. An updated summary is attached.

Sincerely



Richard J. Johnson
Town Manager

RJJ/sal
Attachments



Hartford Region Connecticut River Boat Rides, Tours and Excursions

Slipaway River Tours offers seasonal sightseeing tours and charters on the Connecticut River in the Hartford area.

The Slipaway is a small tour boat, seating 20 passengers, ensuring that the trip will be an engaging experience with captain and crew.

The tours are narrated and highlight the River as a regional treasure; a resource rich in history, recreational enjoyment and natural beauty.

Outings also promote the environmental significance of the river and how it can be cared for and further appreciated.

The season lasts from June until mid-October with schedules published daily.

Currently tours and charters can be scheduled and arranged to depart from various docks located in Hartford, Glastonbury or Wethersfield.

Reservations are not necessary so passengers can pay as they board.

Prices vary by length of tour and vary from \$8 to \$20 per person. Kids 10 and under are discounted.

For more information visit www.slipawayrivertours.com, follow on Facebook and Instagram, or call the Hot Line 860-643-2400.

Hartford Skyline

The tours offer narrations on local history, natural beauty, areas of interest and highlight the River as a regional treasure. In a 60 minute tour we'll see Hartford's historic bridges, the Colt Building, the CT Science Center, CT's Convention Center, CT's tallest building and other Hartford landmarks. This ride offers unique and spectacular views that can only be seen from the river. We can point out the flood control measures and creative riverfront park systems that are in evidence. Nesting sites for Bald Eagles and Osprey are often active. Close in on and observe waterfowl on the sandbars and shoreline; natural habitats for Gulls, Ducks, Geese, Cormorants, Herons, Egrets, and others. At the turn north of the city see views that are much the same as those seen by indigineous people thousands of years ago.

For schedule see website.

60 minutes; adults \$15.00 children 10 and under \$10.00

Locations; Mortensen Plaza, Charter Oak Landing, Riverside Park, Great River Park

90 minutes; adults \$20.00 children 10 and under \$10.00

Locations; same as 60 min. tour with the addition of Wethersfield Cove Park

The 90 minute Hartford skyline tour offers a slightly extended loop of the 60 minute tour. The additional time allows the option to go farther north of Hartford into the shallows and less traveled section of the river or include a loop into Wethersfield Cove to the south.

These tours are shared public offerings which require a minimum number of passengers to depart.

If it's canceled because the minimum isn't met, you'll be offered credit towards a different date/tour or a full refund.

10 passenger minimum to depart for tours.

After 10 or more have booked, individual seats may be purchased up to the 20 passenger maximum.



**CONNECTICUT DEPARTMENT OF TRANSPORTATION
NEWS RELEASE
2800 BERLIN TURNPIKE P.O. BOX 317546
NEWINGTON CONNECTICUT, 06131-7546**

02/11/2020

Rehabilitation of Arrigoni Bridge Approach Spans and Operational Improvements at Saint John's Square / Main Street Intersection in Middletown and Portland

The Connecticut Department of Transportation is announcing the start of construction for the rehabilitation of the Arrigoni Bridge approach spans carrying Routes 17 and 66 in Middletown and Portland. This project will take place simultaneously with the Saint John's Square/Main Street intersection operational improvement project in Middletown. Construction is set to begin on or about February 27, 2020.

Work on the Arrigoni approach spans consists of replacing the bridge decks, superstructure steel upgrades and repairs as well as substructure repairs to improve the overall structural capacity, reliability and integrity of the bridge. Additionally, a new protective fence system ranging in height from 8 to 12-feet, will also be installed on both the approach and main spans as part of this project. Construction activities will be completed in three separate stages in order to maintain traffic flow through the project limits while providing the contractor with adequate space to efficiently complete construction. In each stage, Rt. 17/66 traffic will be reduced to one lane in each direction with the use temporary precast concrete barrier (TPCB). TPCB is expected to be in place for a maximum of 540 days.

Work on St. John's Square and Main Street consists of the geometric realignment of the intersection to improve safety and operational efficiency, as well as the addition of two turn-lanes.

Lane Closure Information

The contractor will be allowed to interfere with traffic at the below locations during the following hours:

- Route 66 (Main Street): Monday – Friday from 9:00am – 2:00pm and 6:00pm – 6:00am, Saturday and Sunday from 9:00pm – 9:00am
- Route 66 (Washington Street): Monday – Friday from 9:00am – 3:00pm and 6:00pm – 6:00am, Saturday and Sunday from 9:00pm – 9:00am
- Route 17 (Hartford Avenue): Monday – Friday 9:00am – 3:00pm and 6:00pm – 6:00am, Saturday and Sunday from 9:00pm – 9:00am
- Route 17 / 66: Monday – Friday from 8:00pm – 6:00am, Saturday and Sunday from 9:00pm – 9:00am
- SR 545 (Washington Street): Monday – Friday from 9:00am – 3:00pm and 6:00pm – 6:00am, Saturday and Sunday from 9:00pm – 9:00am

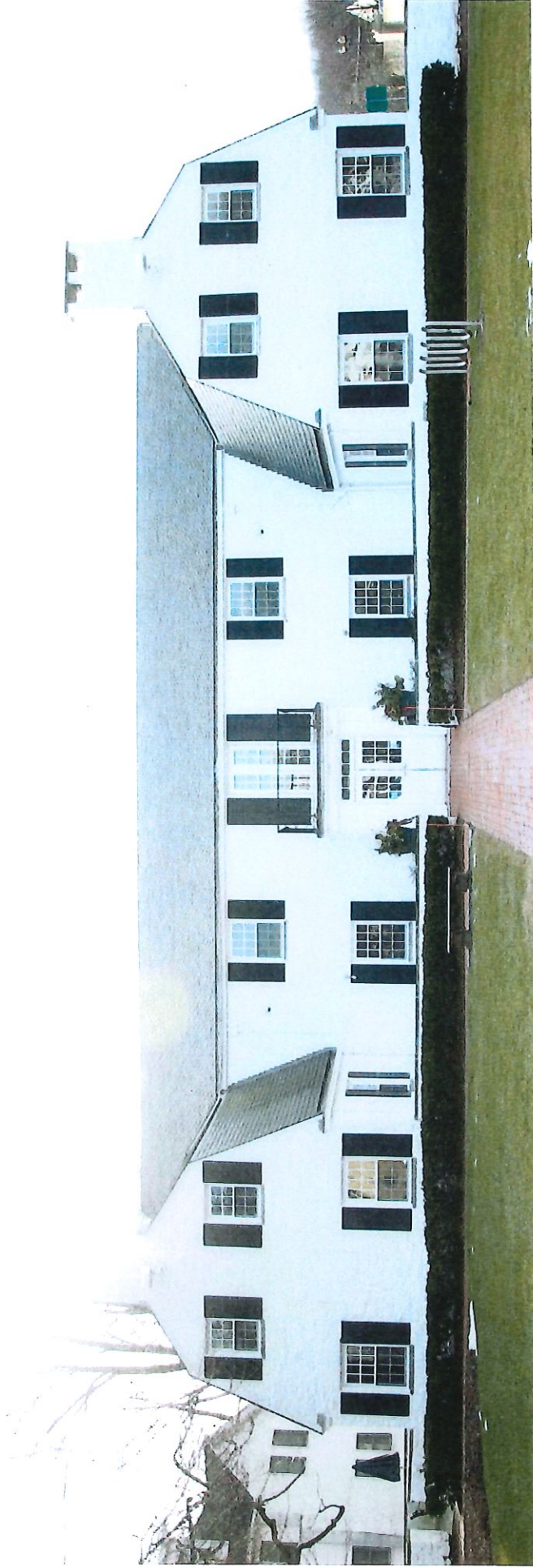
DOT Project Nos. 0082-0312 and 0082-0320 were awarded to Mohawk Northeast, Inc. as one contract at a cost of \$46,289,385.04 on January 13, 2020, and are scheduled to be completed February 25, 2022.

Motorists should be aware that modifications or extensions to this schedule may become necessary due to weather delays or other unforeseen conditions. Motorists are advised to maintain a safe speed when driving in this vicinity.

FOR FURTHER INFORMATION:
OFFICE OF COMMUNICATIONS
TELEPHONE: [\(860\) 594-3062](tel:(860)594-3062)

FAX: (860) 594-3065
WEB SITE: www.ct.gov/dot

Welles-Turner Memorial Library
Plan Review Subcommittee Meeting
January 29th, 2020



Exterior Design | Concept



980 Main Street

Rustic / Modern



2407 Main Street

- Hobby, Craft and Making
- Rural Heritage of Glastonbury
- Study, Research Space
- Contemporary / Modern

Exterior Design | Entry View



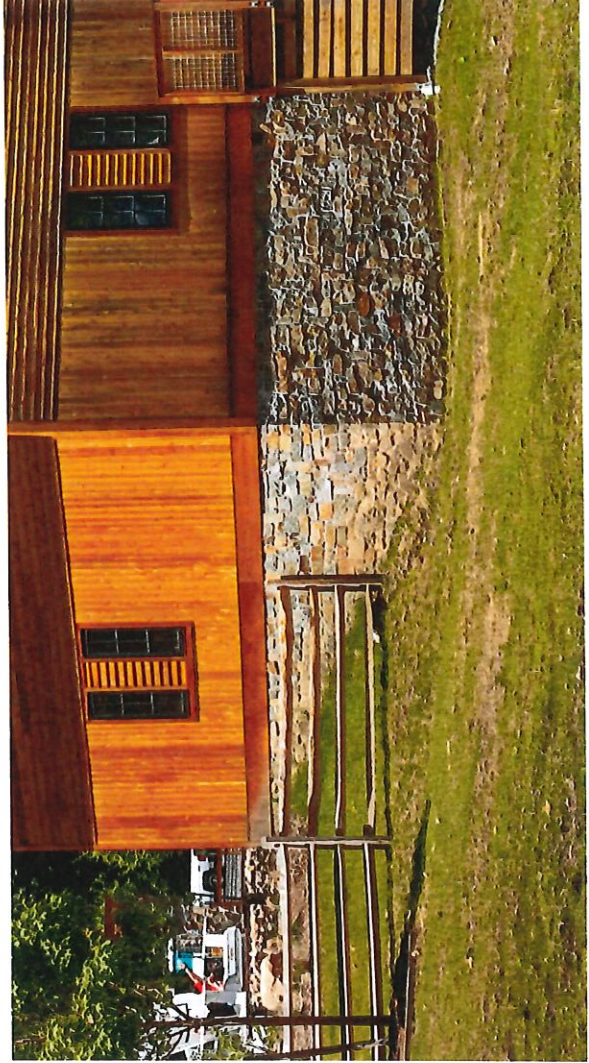
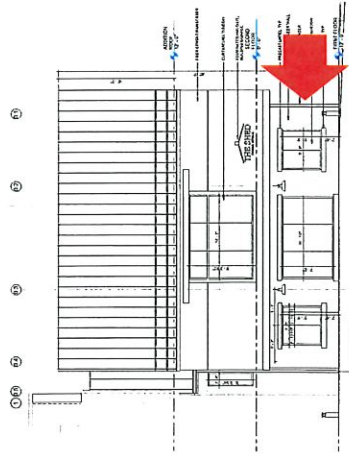
Exterior Design | Entry View



Exterior Design | Plaza View



Exterior Design | Masonry Veneer



Exterior Design | Fiber Cement Siding

