

IN THIS ISSUE ...

- ∞ Introduction
- ∞ Wood Chipper
Yields Efficiency
- ∞ Glastonbury's Green
Initiatives Program

CONTACT US

Town of Glastonbury
2155 Main St
PO Box 6523
Glastonbury CT
06033-6523

Richard J. Johnson
Town Manager
860.652.7500
richard.johnson@glastonbury-ct.gov

Mary Visone
Purchasing Agent
Green Committee Co-Chair
860.652.7588
mary.visone@glastonbury-ct.gov

Mike Bisi
Sanitation Superintendent
Green Committee Co-Chair
860.652.7772
mike.bisi@glastonbury-ct.gov

Ray Purtell
Director
Parks and Recreation
860.652.7687
ray.purtell@glastonbury-ct.gov

Please consider the environment
before printing a copy of this bulletin.
The information will remain available
on our web site.

WOOD REUSE



The Town of Glastonbury



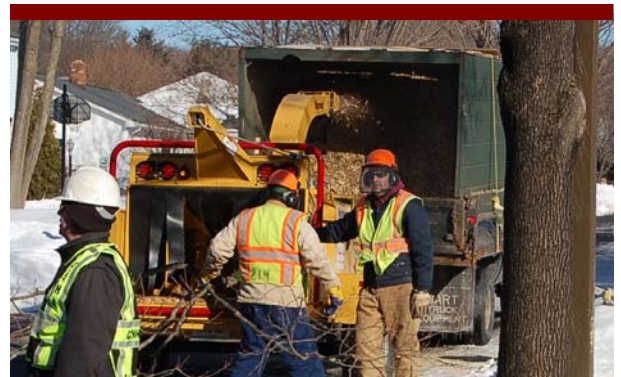
INTRODUCTION

The Parks and Recreation Department is responsible for the care and maintenance of all public grounds, including the trees in parks, on school properties and in other public spaces. Responsibilities also include caring for trees located within the public right-of-way along all local roads. With 206 road miles and more than 180 town-owned parcels, it is a big job.

Tree care typically involves the removal of dead and hazardous trees, pruning ornamental trees, and trimming trees that pose conflicts with sidewalks, sight lines at intersections and overhead clearances along roadways. The volume of brush and limbs that require disposal is considerable. Not only can the brush consume a lot of space in the bulky waste disposal area, but it can also be labor intensive and costly to transport.

WOOD CHIPPER YIELDS EFFICIENCY CORDED WOOD PRODUCES SALES

Looking to gain efficiencies in its maintenance operation, the Parks and Recreation Department purchased a new 15-inch brush chipper in 2009. The chipper has improved operations by allowing staff to chip the brush at the work site, which



eliminates the need to transport piled brush to the bulky waste site. In addition, the wood chips can be used for erosion control and to resurface trails throughout the park system. The new chipper not only increases productivity; it also reduces fuel consumption and the emission of greenhouse gases, and it creates a reusable wood product.

Wood suitable for sale as cord wood is salvaged, seasoned and split before being sold to residents in 1/8 cord lots.

GLASTONBURY'S GREEN INITIATIVES PROGRAM

Glastonbury's Green Initiatives program operates under the direction of the Town Manager. The committee is chaired by the Purchasing Agent and the Superintendent of Sanitation. Committee members from across Town departments participate and contribute ideas and suggestions committed to a "greener" community.

The committee assembles information about products and services and makes the information available to specific departments that can evaluate them and develop applications in Town projects with the approval of the Town Manager.

These "Go-Green" bulletins contain information about the results of product evaluations and other accomplishments of Town departments. We hope this information can provide you insight to the Town's green initiatives and also lead others in the community to find ways to use environmentally preferable products. Please contact us if we can help you with further information or if you have additional suggestions. ■

