

THE TOWN OF GLASTONBURY, CONNECTICUT

Facilities & Maintenance Building Emergency Service Modifications – Glastonbury

State of CT. Project # 53-191, Contract 4

Town Project # GL-2019-30

2145 MAIN STREET, GLASTONBURY, CT.



SILVER / PETRUCELLI + ASSOCIATES

Architects/Engineers/Interior Designers

3190 Whitney Avenue, Hamden, CT 06518-2340

Tel. 203 230 9007 Fax. 203 230 8247

silverpetrucelli.com

100% Construction Documents
April 13th, 2018

ABBREVIATIONS

AB. ANCHOR BOLT	FDN. FOUNDATION	P.C.B. PAINTED CONCRETE BLOCK
A.C.P. ASBESTOS CEMENT PIPE	FF. FINISHED FLOOR	P.G.B. PAINTED GYPSUM BOARD
ADJ. ADJUSTABLE	FIN. FINISH FINISHED	PL. PLATE
A.F.F. ABOVE FINISH FLOOR	FIXT. FIXTURE	PLUMB. PLUMBING
A.C.T. ACOUSTICAL CEILING TILE	FL. FLOOR	PLYWOOD
ALUM. ALUMINUM	FT. FOOT	PREP. PREPARATION
APPROX. APPROXIMATE	F.S. FAR SIDE	P.T. PRESSURE TREATED
ARCH. ARCHITECTURAL	FTG. FOOTING	P.T.D. PAINTED
ASPH. ASPHALT		P.V.C. POLYVINYL CHLORIDE
AVG. AVERAGE		
	G. GAS	R. RISER
	GA. GAGE, GAUGE	RAD. RADIUS
	GEN. GENERAL	R.C.P. REINFORCED CONCRETE PIPE
BSMT. BASEMENT	G.C. GENERAL CONTRACTOR	R.D. ROOF DRAIN
BD. BOARD	GYP. GYPSUM	REINF. REINFORCEMENT
BRG. BEARING	GYP. BD. GYPSUM BOARD	REQD. REQUIRED
BRK. BRICK		R.H. ROOF HATCH
BIT. BITUMINOUS		R.L. ROOF LEADER
BLK. BLOCK		RM. ROOM
BLDG. BUILDING	H.C. HANDICAPPED	
B.S. BOTH SIDES	HD. HEADED	
	HDWR. HARDWARE	
	HGT. HEIGHT	
	H.P. HIGH POINT	
	H.M. HOLLOW METAL	
	HORIZ. HORIZONTAL, HORIZONTALLY	
	H.B. HOSE BIBB	
	HR. HOUR	
	HYD. HYDRANT	
	INSUL. INSULATION, INSULATED	
	INT. INTERIOR	
	INV. INVERT	
	JAN. JANITOR	
	K.P. KICK PLATE	
	LAM. LAMINATE	
	L.F. LINEAL FOOT	
	LG. LONG	
	LOC. LOCATION	
	L.P. LOW POINT	
	LTG. LIGHTING	
	MAS. MASONRY	
	MAX. MAXIMUM	
	MECH. MECHANICAL	
	M.H. MANHOLE	
	MIN. MINIMUM	
	MISC. MISCELLANEOUS	
	M.O. MASONRY OPENING	
	MTD. MOUNTED	
	N.A. NOT APPLICABLE	
	N.I.C. NOT IN CONTRACT	
	NO. NUMBER	
	NOM. NOMINAL	
	N.S. NEAR SIDE	
	N.T.S. NOT TO SCALE	
	O.C. ON CENTER	
	O.C.P. OCCUPANT	
	O.D. OUTSIDE DIAMETER	
	OPNG. OPENING	
		AT. AT
		DIAMETER
CI. CAST IRON		S. STORM
C.I.P. CAST IN PLACE CONCRETE		SAN. SANITARY
C.B. CATCH BASIN		S.C. SEALED CONCRETE
C.B.R. CATCH BASIN TO BE REMOVED		SCHED. SCHEDULE
CLG. CEILING		SECT. SECTION
CL. CENTER LINE		S.F. STEP FOOTING
C.B.D. CHALK BOARD		SIM. SIMILAR
CC. CURB CUT		S.O.G. SLAB ON GRADE
C.O. CLEAN OUT		SPEC. SPECIFICATIONS
COL. COLUMN		SQ. SQUARE
CONC. CONCRETE		SQ. FT. SQUARE FEET
CONF. CONFERENCE		STL. STEEL
C.M.U. CONCRETE MASONRY UNIT		STRUCT. STRUCTURAL
CONT. CONTINUOUS, CONTINUE		SUSP. SUSPENDED, SUSPENSION
C.J. CONTROL JOINT / CONSTRUCTION JOINT		S.W. SHEAR WALL
CONTR. CONTRACTOR		S.W.F. SHEAR WALL FOOTING
DET. DETAIL		T. TELEPHONE
DIA. DIAMETER		T&B TOP & BOTTOM
DIM. DIMENSION		TECH. TECHNOLOGY
DR. DOOR		T.O. TOP OF
DN. DOWN		T.O.F. TOP OF FRAME
DWG. DRAWING		T.O.S. TOP OF STEEL
		T/S TOP OF SLAB
		T/W TOP OF WALL
		TYP. TYPICAL
		U.O.N. UNLESS OTHERWISE NOTED
		V.B. VINYL-BASE
		V.C.T. VINYL COMPOSITE TILE
		VERT. VERTICAL
		V.I.F. VERIFY IN FIELD
		W. WATER
		W/ WITH
		WCJ WALL CONTROL JOINT
		WD. WOOD
		WF. WIDE FLANGE
		W.W.F. WELDED FABRIC
		W.W.M. WELDED WIRE MESH

SYMBOL LEGEND

(XXX)	ROOM NUMBER
(XX)	DOOR NUMBER
(XX)	DEMOLITION NOTE
(XX)	WINDOW TYPE
(XX)	DETAIL NUMBER
(XX)	DRAWING NUMBER
(XX)	CONSTRUCTION NOTE
(X)	SECTION / DETAIL
(X)	DRAWING NUMBER
(XX)	WALL SECTION
(XX)	DRAWING NUMBER
(XX)	INTERIOR / EXT. ELEVATION
(XX)	DRAWING NUMBER
(X)	REFERENCE POINT
(XX)	WALL TYPE
(X)	REVISION MARK

GRAPHIC LEGEND

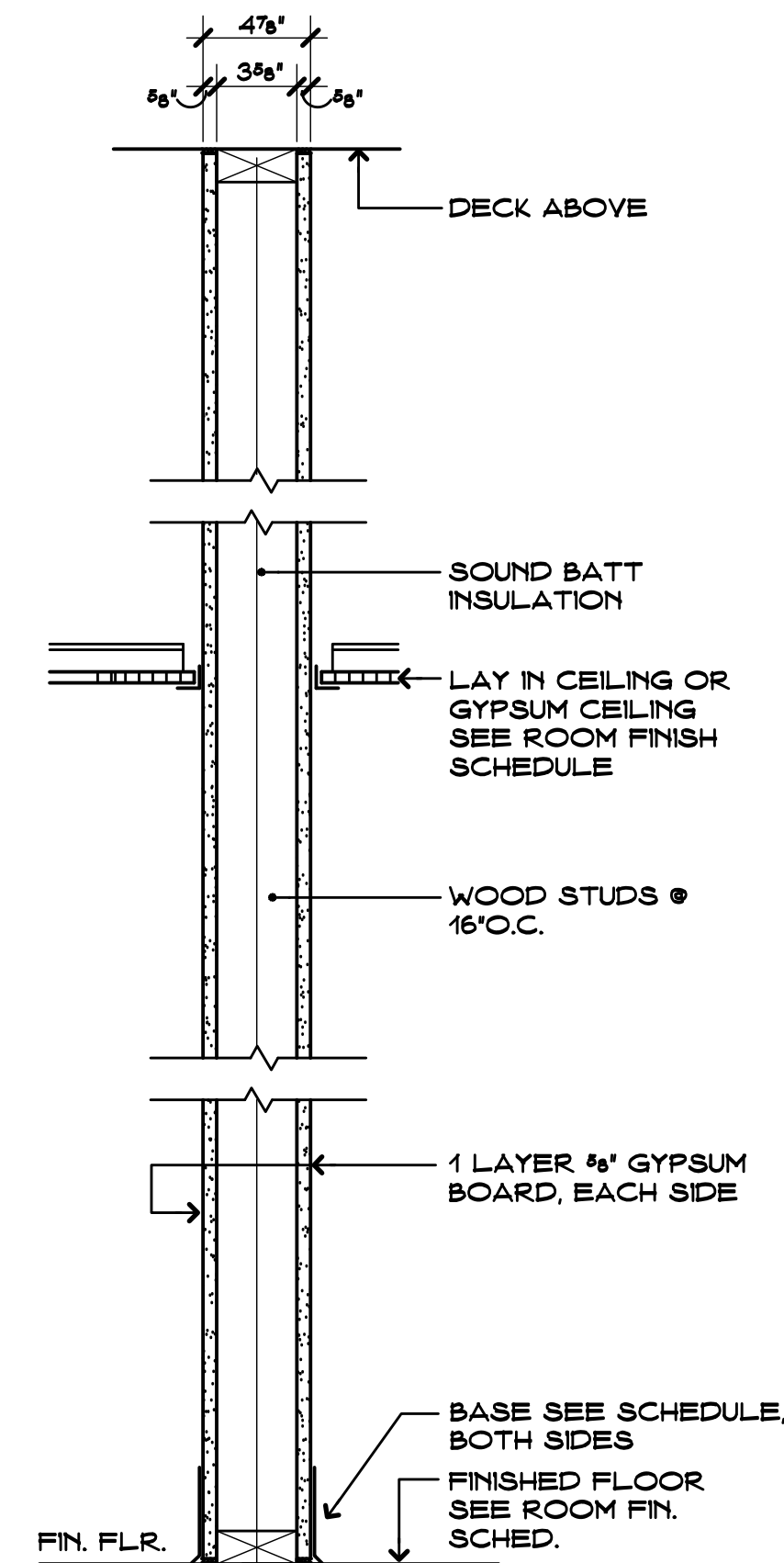
	CONCRETE
	CONCRETE MASONRY UNITS
	BRICK
	STONE
	METALS
	COMPACTED GRAVEL
	EARTH
	PLYWOOD
	ACOUSTICAL TILE
	WOOD FRAMING - THROUGH MEMBER
	WOOD FRAMING - INTERRUPTED MEMBER
	FINISHED WOOD
	BATT INSULATION
	RIGID INSULATION
	GYPSUM BOARD

GENERAL NOTES

- FOR SPECIFIC WALL DESIGNATIONS AND RATED DESIGNS, SEE THIS DWG A1.
- GENERAL NOTES FOUND ANYWHERE IN THE CONTRACT DOCUMENTS RELATE TO ALL DRAWINGS AND SPECIFICATIONS.
- ALL MATERIALS & EQUIPMENT ARE NEW UNLESS OTHERWISE NOTED AS 'EXISTING'.
- ALL EXISTING UTILITIES & EQUIPMENT LOCATIONS ARE APPROXIMATE - CONTRACTOR TO FIELD VERIFY.
- ASSUME THAT ALL OF THE EXISTING STEEL IS PAINTED WITH LEAD BASED PAINT. CONTRACTOR IS RESPONSIBLE FOR THE PROPER SAFETY PRECAUTIONS WHEN DISTURBING THE PAINT. THIS INCLUDES THE STATE OF CONNECTICUT AND OSHA.
- ALL MATERIALS USED IN THE SCOPE OF WORK MUST NOT CONTAIN ANY ASBESTOS AND THE CONTRACTOR MUST CERTIFY THAT TO THE BEST OF HIS/HER KNOWLEDGE THAT MATERIALS USED IN THE SCOPE OF WORK ARE ASBESTOS FREE.
- PROVIDE ALL TEMPORARY PARTITIONS AND PROTECTION METHODS TO INSURE THAT THE OWNERS MATERIALS, EQUIPMENT AND OPERATIONS ARE PROTECTED AND REMAIN OPERATIONAL DURING CONSTRUCTION.
- THE DRAWINGS AND THE SPECIFICATIONS ARE COMPLEMENTARY - WHAT IS REQUIRED BY ONE IS REQUIRED BY BOTH.

LIST OF DRAWINGS

- COVER SHEET
- A1 - GENERAL INFORMATION
- ARCHITECTURAL DRAWINGS:**
 A2 - CODE PLANS & INFORMATION
 A3 - FLOOR PLAN & SCREEN WALL DETAILS
 A4 - SECOND FLOOR PLAN, SCHEDULES, AND DOOR TYPES
- FIRE PROTECTION DRAWINGS:**
 F1 - FIRE PROTECTION COVER SHEET & SCHEDULES
 F2 - FIRE PROTECTION MAIN LEVEL FLOOR PLAN
 F3 - FIRE PROTECTION MEZZANINE AND ATTIC FLOOR PLANS
 F4 - FIRE PROTECTION DETAILS
 F5 - FIRE PROTECTION DETAILS
- PLUMBING DRAWINGS:**
 P1 - PLUMBING PLANS, NOTES, SCHEDULES, NOTES & DETAILS.
- MECHANICAL DRAWINGS:**
 M1 - GENERAL NOTES, LEGEND AND ABBREVIATIONS
 M2 - MECHANICAL FLOOR PLAN, DETAILS AND SCHEDULES
- ELECTRICAL DRAWINGS:**
 E1 - POWER AND SYSTEMS FLOOR PLANS - ELECTRICAL
 E2 - PHOTOVOLTAIC ROOF PLAN, DETAILS AND NOTES



TYPE 1

3-1/2" WOOD STUDS @ 16" O.C.
 SOUND ATTENUATED BATTS
 1/2" GWS TYPE 'X', FTD, EA SIDE
 (1) HOUR FIRE RATED.
 UL 465



BUILDING CODE INFORMATION

DATE OF ORIGINAL CONSTRUCTION	2016
1. USE GROUP CLASSIFICATION (Chapter 3)	F1 / B
(Primary)	
(Incidental)	
2. CONSTRUCTION TYPE (Chapter 6)	VB
Minimum Type Required	
Actual Type Provided (existing)	
(new)	
3. BUILDING HEIGHT (Chapter 5)	2 ST / 40'
Allowable Height (story/feet)	
Actual Height (story/feet)	34'-0"
(Stories Above Grade)	2
4. BUILDING AREA (Chapter 5)	
a) Building Area (first floor)	
New construction	0
Total floor	

5. AREA MODIFICATIONS TO TABLE 503

Total Perimeter =	115 ft.	30 ft.	30 ft.	115 ft.
Open Perimeter =	115 ft.	30 ft.	30 ft.	115 ft.
	N	E	W	S
Total Frontage (F)	300 ft.	Perimeter (P)	300 ft.	
<small>(Building perimeter which fronts on a public way or open space having 20 feet open min.) (perimeter of the entire building)</small>				
Width of open space (W)	30			
If = 100[F/P - 0.25]W/30				
100[300/300 - 0.25]30/30 =	75			
% Frontage increase (If) =	75 %			
% of Allowable Tabular Area, At (table 503)				100 %
% of Increase for frontage, If (506.2)				75 %
% of Increase for automatic sprinklers, Is (506.3)				%
Total percentage factor				75 %
Conversion factor				1.75
<small>(Total percentage factor + 100)</small>				

6. ALLOWABLE AREAS - ASSEMBLY USES, USE GROUP A-3 (FIRE AREA #1) (Allowable Area 506.4)

a) ALLOWABLE AREA per floor (Aa)

(conversion factor)	1.75	x	(tabular area, Table 503)	8,500	=	23,375	sq. ft.
---------------------	------	---	---------------------------	-------	---	--------	---------

b) ACTUAL TOTAL FLOOR AREA (Proposed)

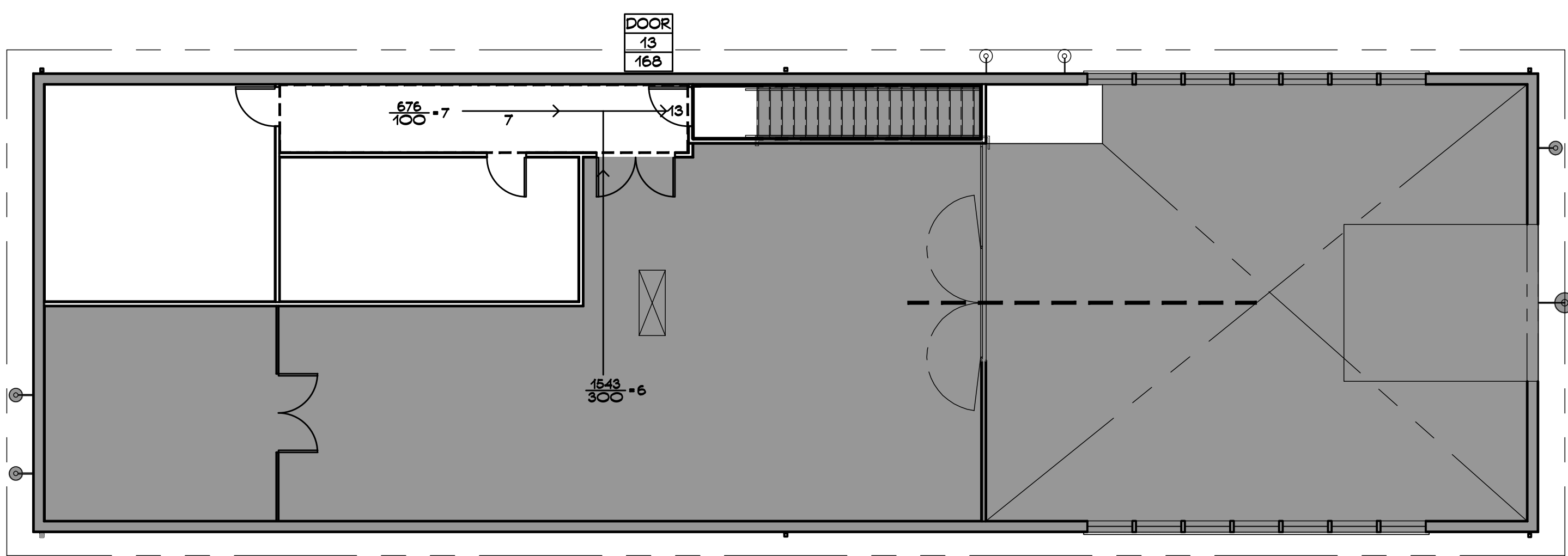
	4,025	sq. ft.
--	-------	---------

c) ALLOWABLE FLOOR AREA (all stories)

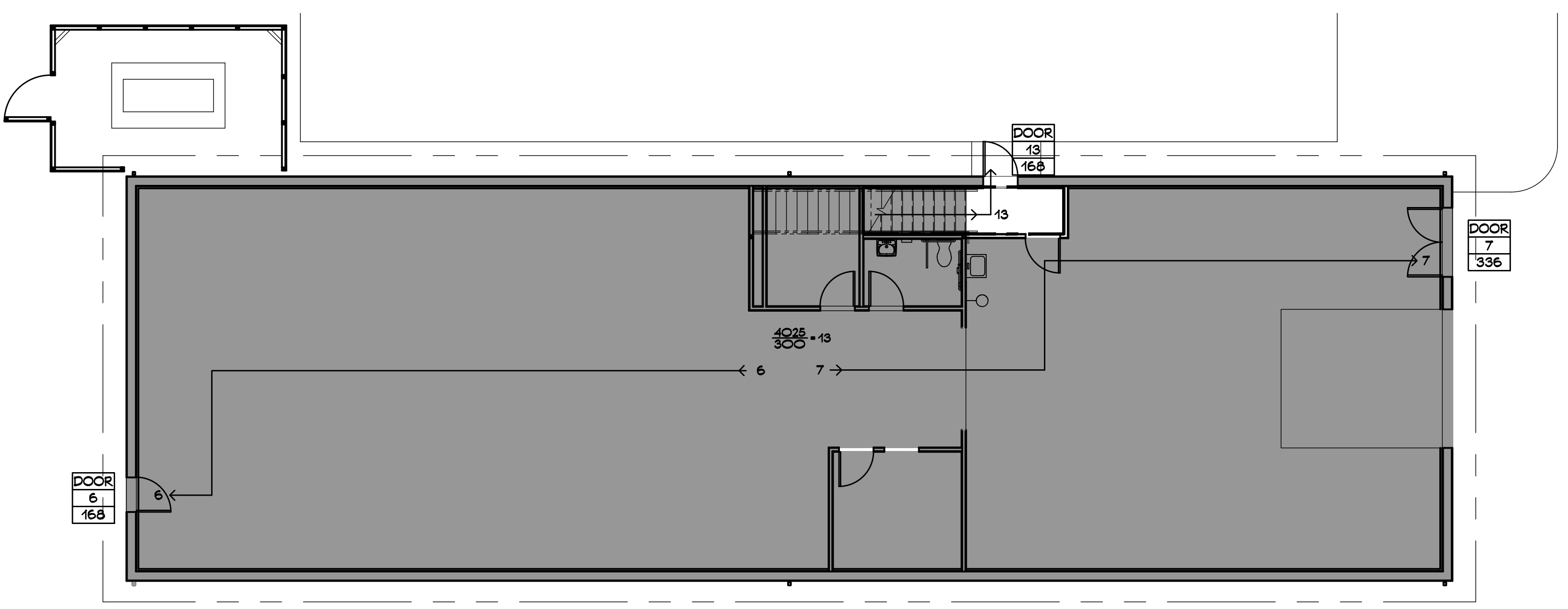
Allowable area per floor (Aa)	23,375	x	number of stories (maximum 3)	2	=	46,750	sq. ft.
-------------------------------	--------	---	-------------------------------	---	---	--------	---------

7. FIRE-RESISTANCE RATED REQUIREMENTS FOR BUILDING ELEMENTS TABLE 302.1.1 - requires a 2 hour separation between A-3 & B

1) Structural frame	0	Hr(s)
2) Bearing Walls Exterior	0	Hr(s)
Interior	0	Hr(s)
3) Non-Bearing Walls/Partitions Exterior	0	Hr(s)
4) Non-Bearing Walls/Partitions Interior	0	Hr(s)
5) Floor Construction Including Beams	0	Hr(s)
6) Roof Construction Including Beams	0	Hr(s)
8. OCCUPANCY LOAD		
Design Total for Building	26	
Total Exit Capacity for Building	672	
9. ACCESSIBLE BUILDING	X	Designated
		Non Designated
10. SPRINKLER PROTECTION	NO	Entire Building
		Limited Area
11. CODES TO WHICH THIS PROJECT WAS DESIGNED		
State Building Code w/Supplement	2016	
State Fire Code w/Supplement	2016	
State Health Code	MOST CURRENT	
OSHA	MOST CURRENT	
Section 504	N.A.	
ADA	MOST CURRENT	
12. THRESHOLD BUILDING CONDITIONS		Yes
		No
		X



EGRESS FLOOR PLAN 1 A2
SCALE: 1/8" = 1'-0"
NORTH

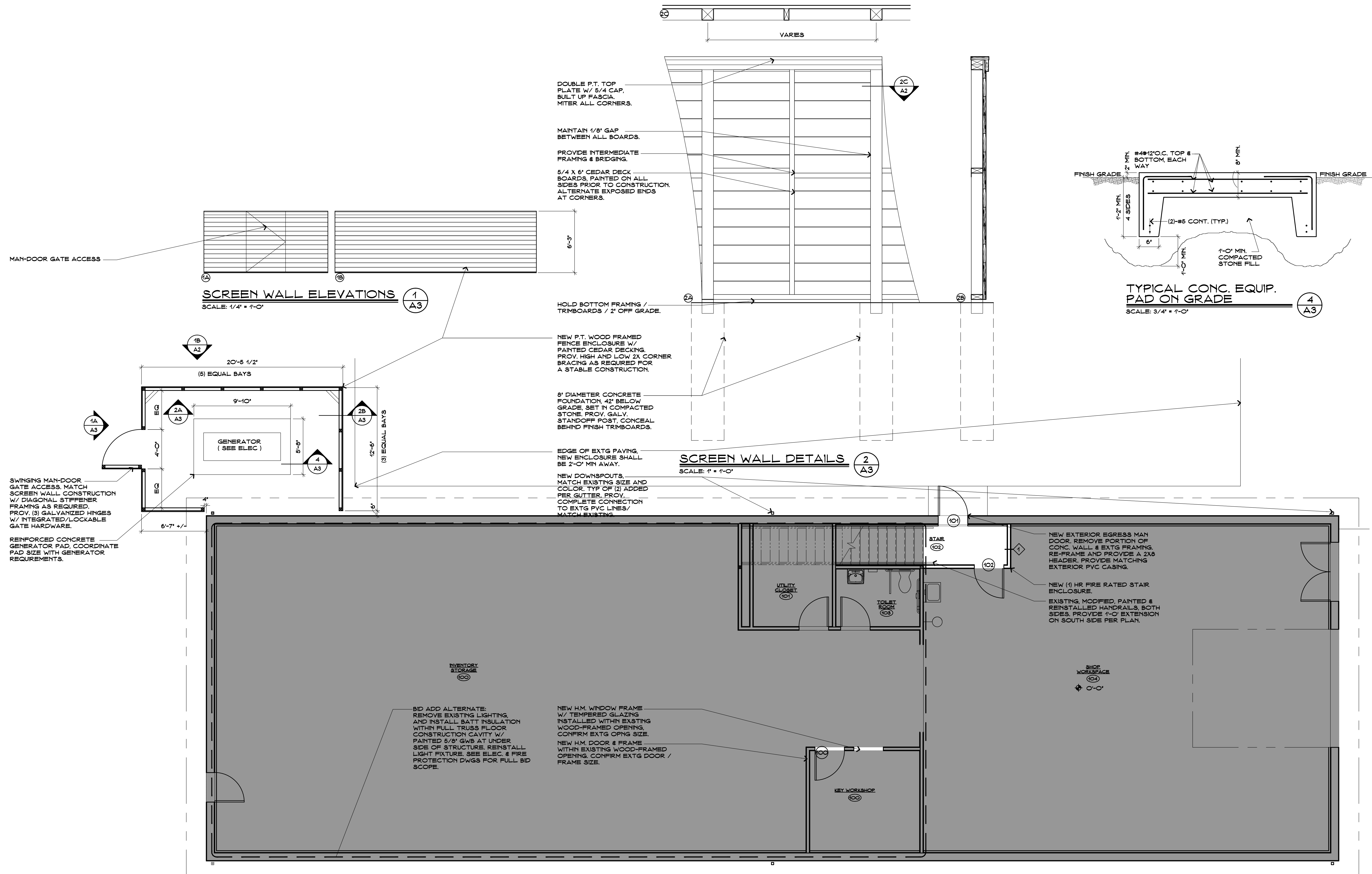


SYMBOL LEGEND FOR CODE INFORMATION

	- ACCESSIBLE AREA OR EXIT
$\frac{840}{20} = 42$	AREA IN S.F. OCC. LOAD FACTOR
$\frac{42}{168}$	ACTUAL EGRESS OCC. OF DOOR
$\frac{168}{168}$	MAX. ALLOWABLE EGRESS OCC. OF DOOR
---	- 1 HOUR FIRE RATED WALL CEILING/WALLS RESIST THE PASSAGE OF SMOKE
- - - - -	- CEILING/WALLS RESIST THE PASSAGE OF SMOKE
→	- MAXIMUM TRAVEL DISTANCE
→	- DIRECTION OF TRAVEL



Revision	Description	Date	Revised By



SCREEN WALL ELEVATIONS 1
SCALE: 1/4" = 1'-0"

SCREEN WALL DETAILS 2
SCALE: 1" = 1'-0"

TYPICAL CONC. EQUIP. PAD ON GRADE 4
SCALE: 3/4" = 1'-0"

FIRST FLOOR PLAN 3
SCALE: 1/4" = 1'-0"
NORTH NOTE: ALL DIMENSIONS TAKEN TO FACE OF STUD U.O.N.

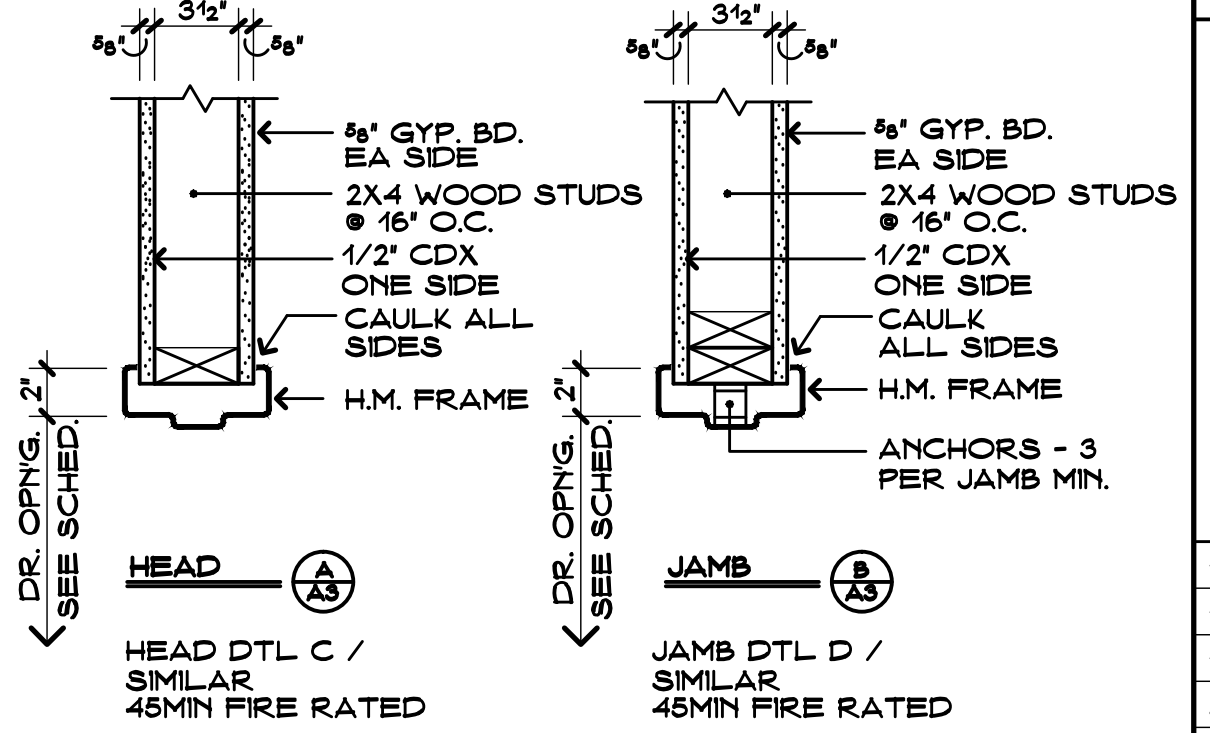
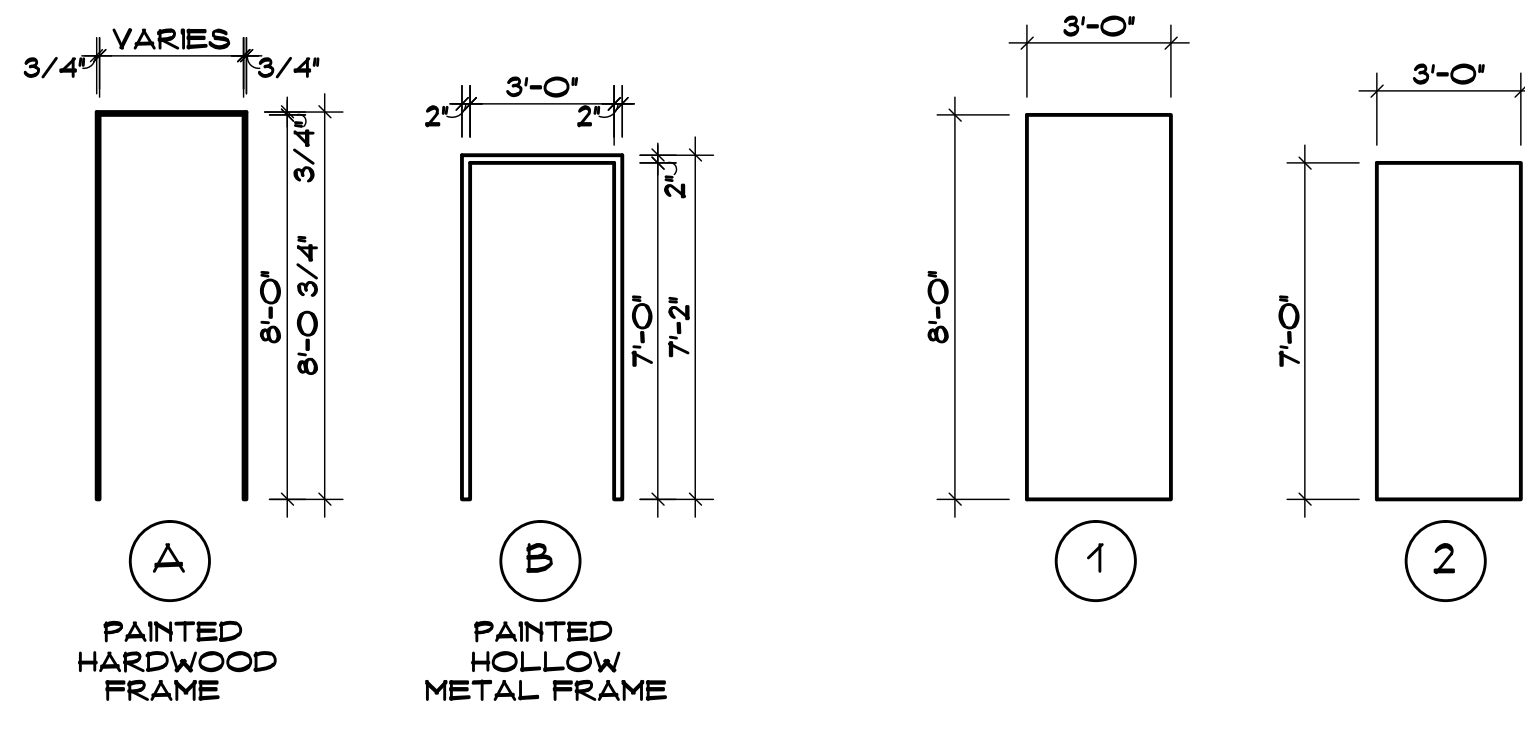
BID ADD ALTERNATE: REMOVE EXISTING LIGHTING AND INSTALL BATT INSULATION WITHIN FULL TRUSS FLOOR CONSTRUCTION CAVITY W/ PAINTED 5/8" GWB AT UNDER SIDE OF STRUCTURE. REINSTALL LIGHT FIXTURE. SEE ELEC. & FIRE PROTECTION DWGS FOR FULL BID SCOPE.

NEW H.M. WINDOW FRAME W/ TEMPERED GLAZING INSTALLED WITHIN EXISTING WOOD-FRAMED OPENING, CONFIRM EXTG OPNG SIZE.
NEW H.M. DOOR & FRAME WITHIN EXISTING WOOD-FRAMED OPENING, CONFIRM EXTG DOOR / FRAME SIZE.

NEW EXTERIOR EGRESS MAN DOOR. REMOVE PORTION OF CONC. WALL & EXTG FRAMING. RE-FRAME AND PROVIDE A 2X6 HEADER. PROVIDE MATCHING EXTERIOR PVC CASING.
NEW (1) HR FIRE RATED STAIR ENCLOSURE.
EXISTING, MODIFIED, PAINTED & REINSTALLED HANDRAILS, BOTH SIDES. PROVIDE 1'-0" EXTENSION ON SOUTH SIDE PER PLAN.



Revision	Description	Date	Revised By



DOOR SCHEDULE

DOOR		FRAME		FIRE RATING		HARDWARE - SEE SPECIFICATIONS		REMARKS	
DOOR NUMBER	SIZE	TYPE	MATERIAL	DETAIL/SHEET NO.	DETAIL	RATING	FIRE CODE	DISABLED REQUIREMENTS	
100	3'-0" X 8'-0"	HM	HM	A/A4	B/A4	RESISTS PASSAGE OF SMOKE			
101	6'-0" X 8'-0"	FB	A	WD		'B' LABELED (90 MINUTE)			
102	6'-0" X 14'-0"	HM	C	HM	C/A4	'B' LABELED (60 MINUTE)			
201	3'-0" X 7'-0"	HM	B	HM	A/A4	'C' LABELED (45 MINUTE)			
202	3'-0" X 7'-0"	HM	B	HM	A/A4	'C' LABELED (45 MINUTE)			
203	3'-0" X 7'-0"	HM	B	HM	A/A4	'C' LABELED (45 MINUTE)			
204	3'-0" X 7'-0"	HM	C	HM	C/A4	'C' LABELED (45 MINUTE)			

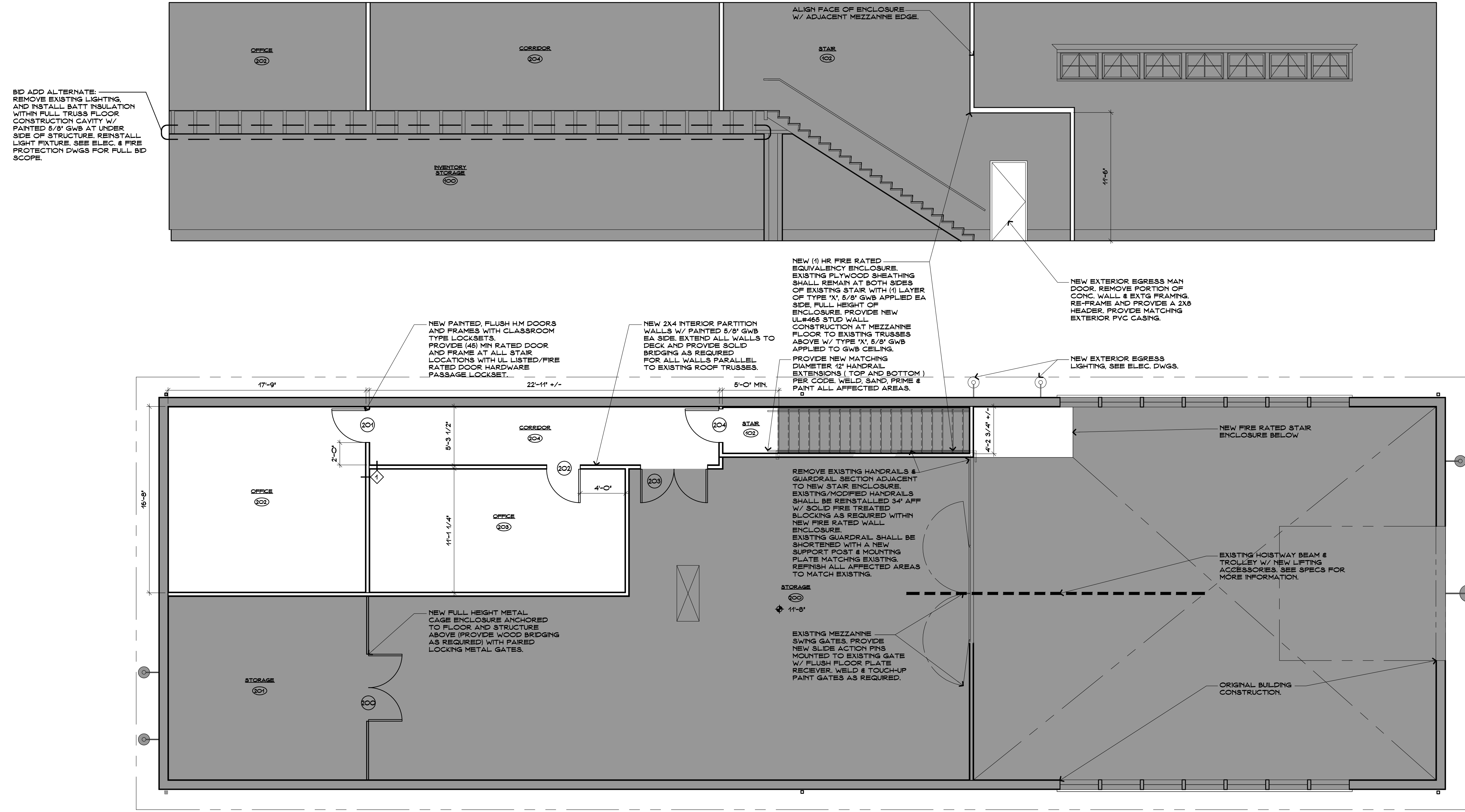
LEGEND: HM - HOLLOW METAL, FB - FIBERGLASS, TEMP - TEMPERED, INSUL - INSULATED, WD - WOOD

ROOM FINISH SCHEDULE

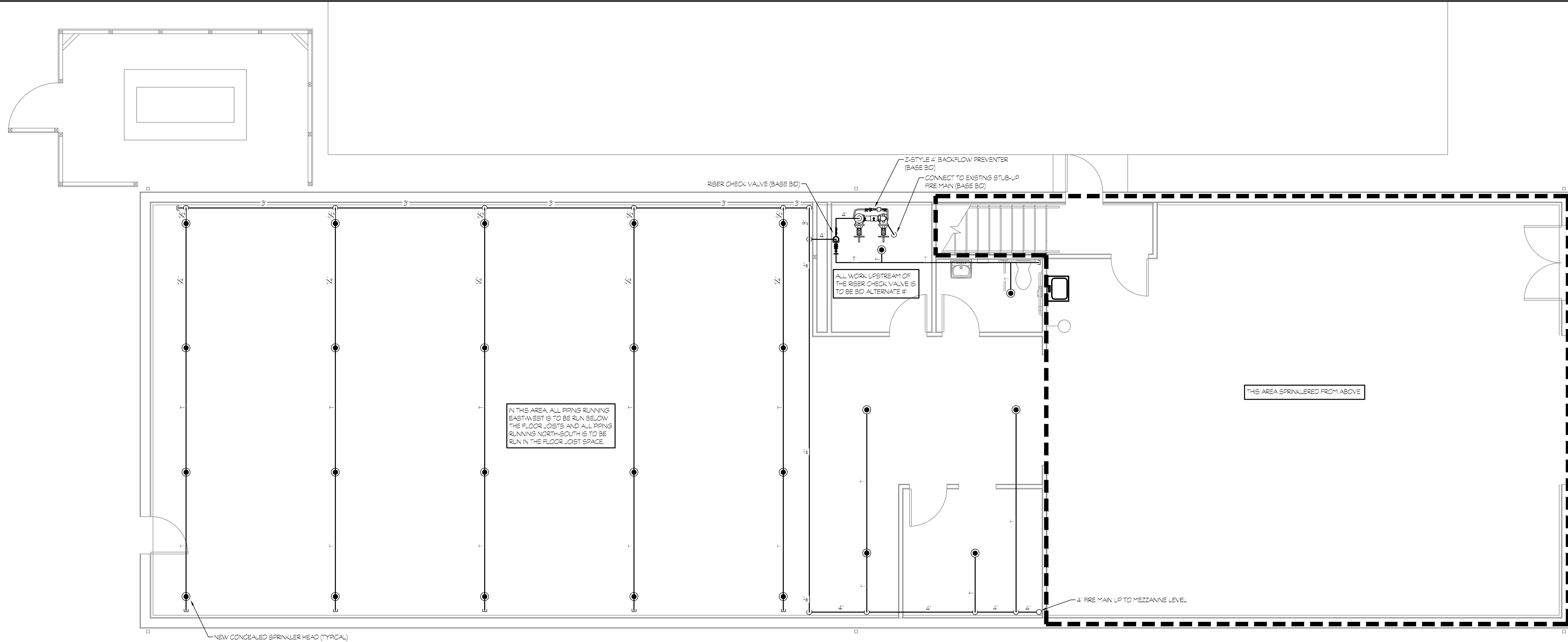
ROOM	FLOOR	WALL FINISH	CEILING	NOTES
NO.	ROOM NAME	FLR. FIN. BASE	EAST SOUTH WEST NORTH	MATL.
200	STORAGE			
201	STORAGE		M.C.	G.W.B.
202	OFFICE	R.B.	G.W.B. G.W.B.	G.W.B.
203	OFFICE	R.B.	G.W.B. G.W.B.	G.W.B.
204	CORRIDOR		G.W.B. G.W.B.	G.W.B.

LEGEND: E.S. - EXPOSED STRUCTURE, G.W.B. - GYPSUM WALL BOARD, PAINTED, S.C. - SEALED CONCRETE, PLY - PLYWOOD, R.T. - RUBBER TREADS, R.B. - RUBBER BASE, M.C. - METAL CAGED WALL

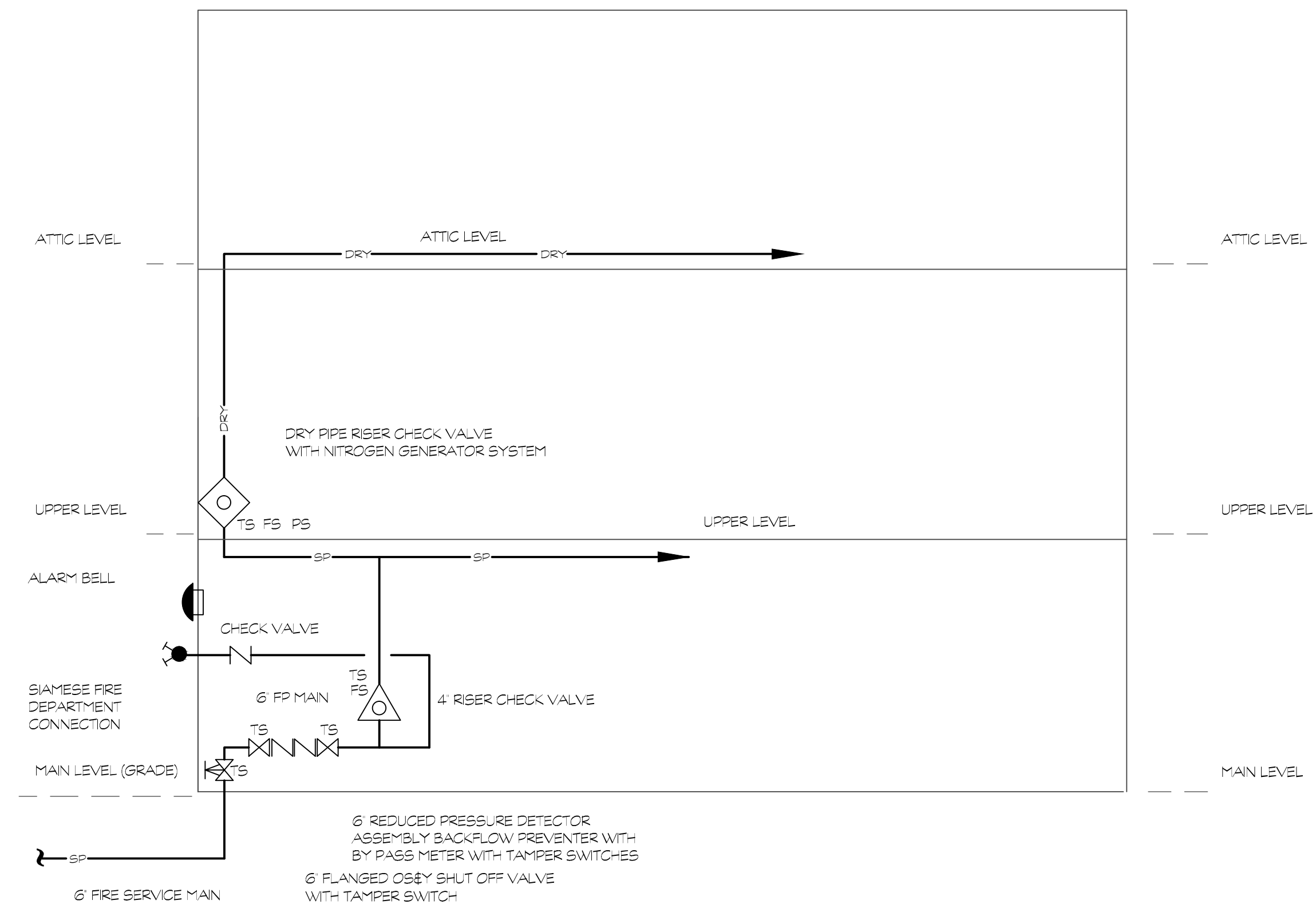
NOTES: 1. ALL NEW HM DOORS & FRAMES TO BE PAINTED



SECOND FLOOR PLAN 1/A4
 SCALE: 1/4" = 1'-0"
 NORTH NOTE: ALL DIMENSIONS TAKEN TO FACE OF STUD U.O.N.



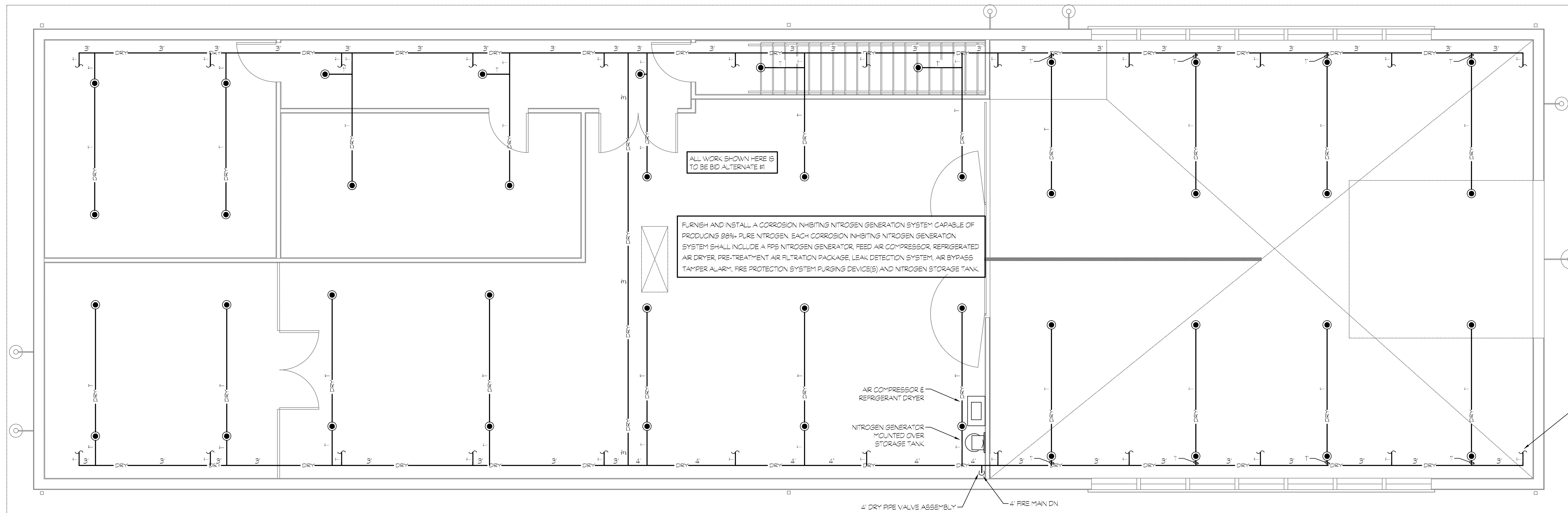
MAIN LEVEL FIRE PROTECTION PLAN 1
 SCALE: 1/4" = 1'-0" F2



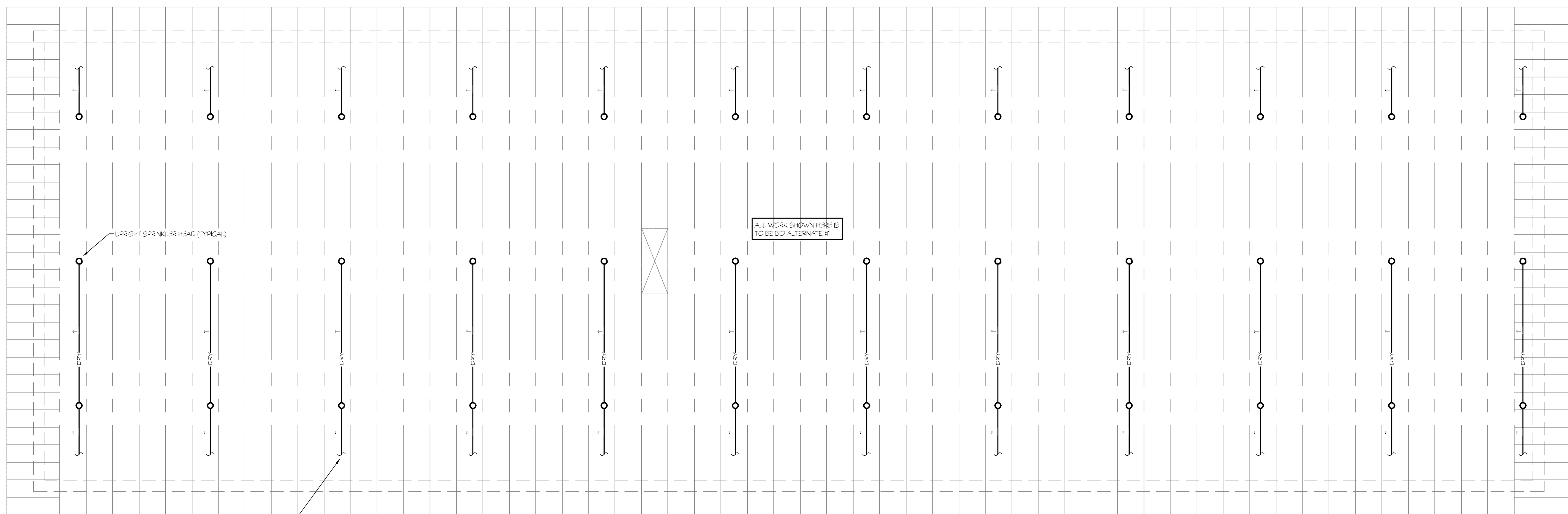
MAIN PIPING SCHEMATIC RISER DIAGRAM 2
 SCALE: 1/4" = 1'-0" F2



Revision	Description	Date	Revised By



MEZZANINE FIRE PROTECTION PLAN
 SCALE: 1/4" = 1'-0"
 NORTH

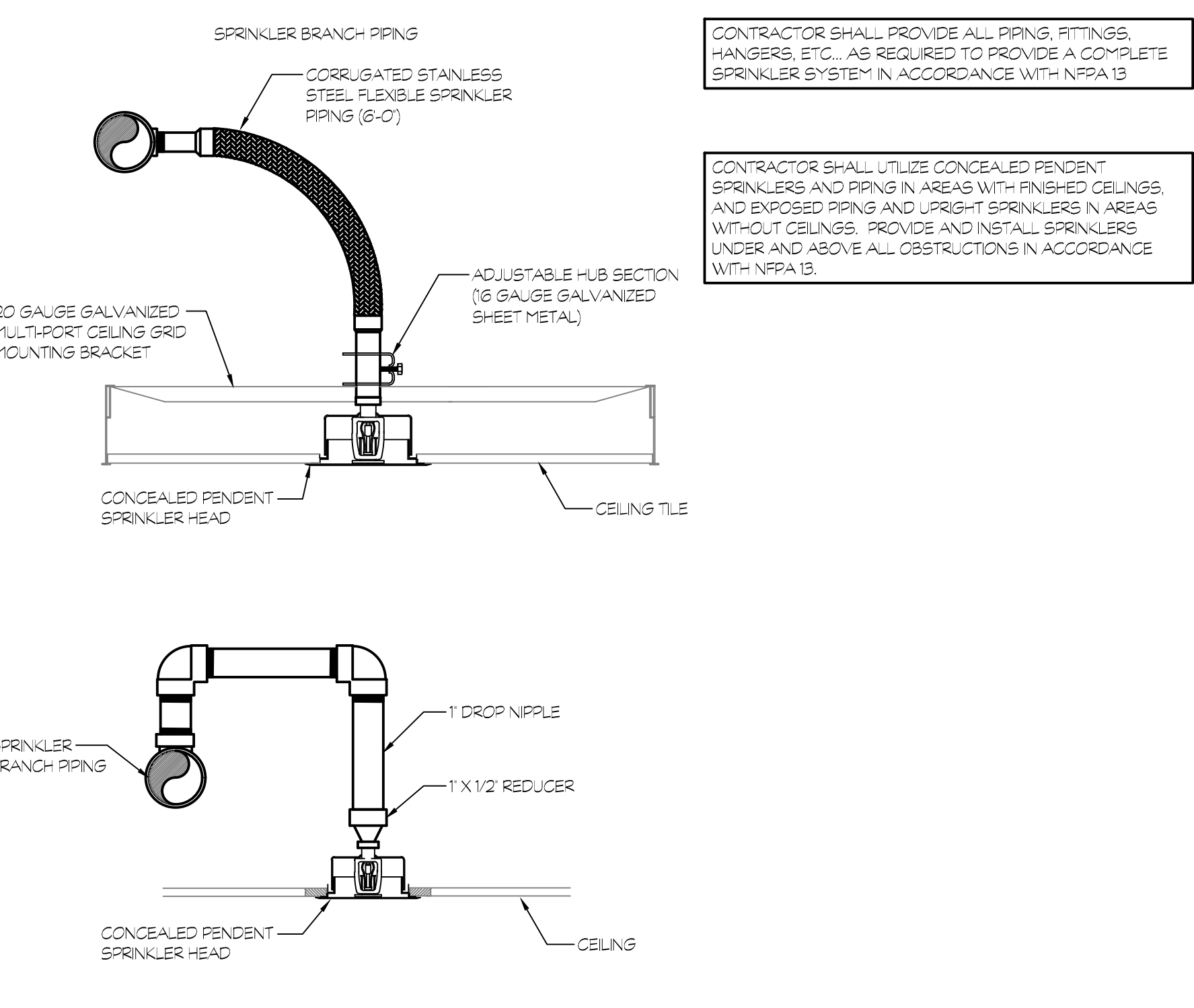
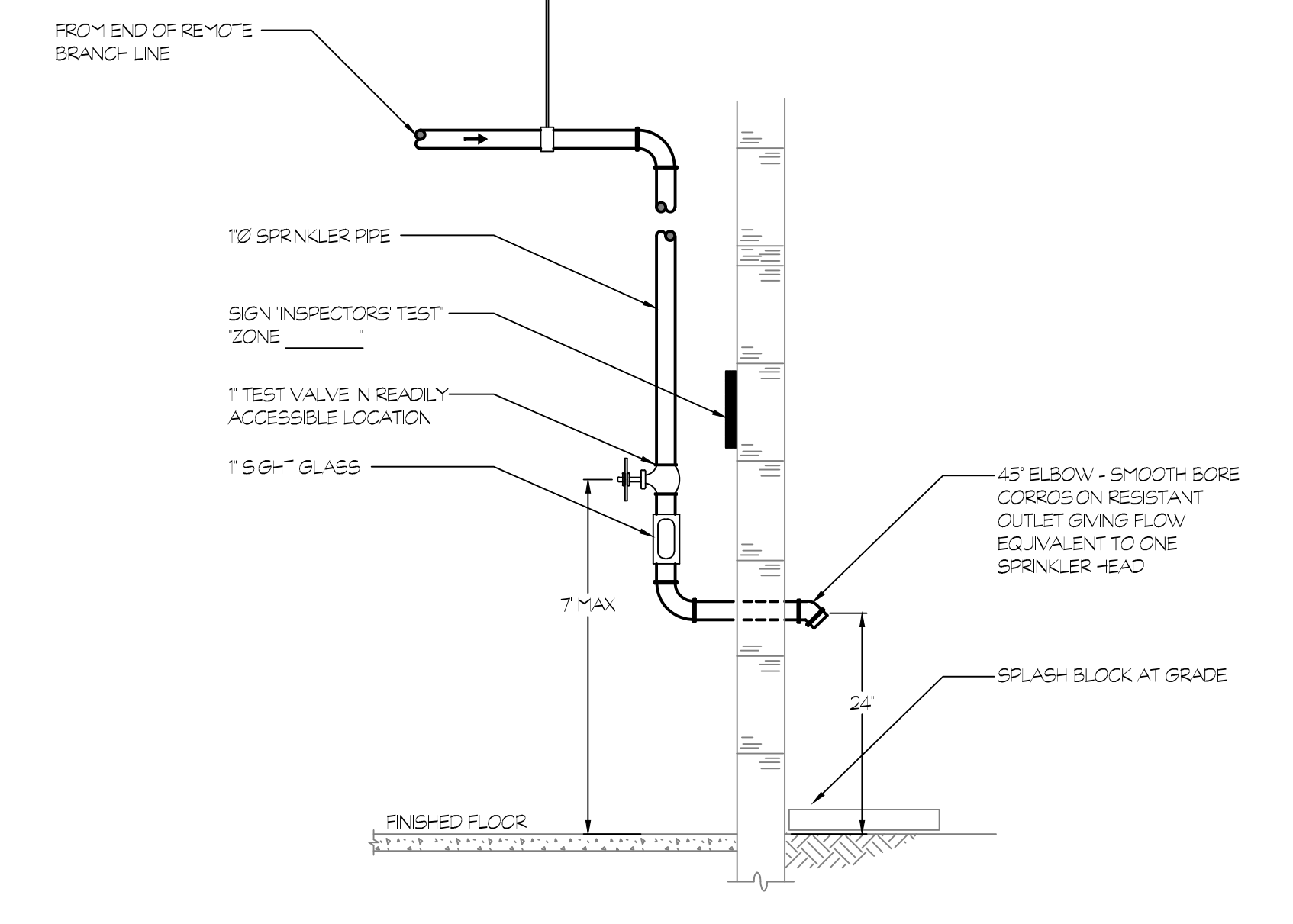
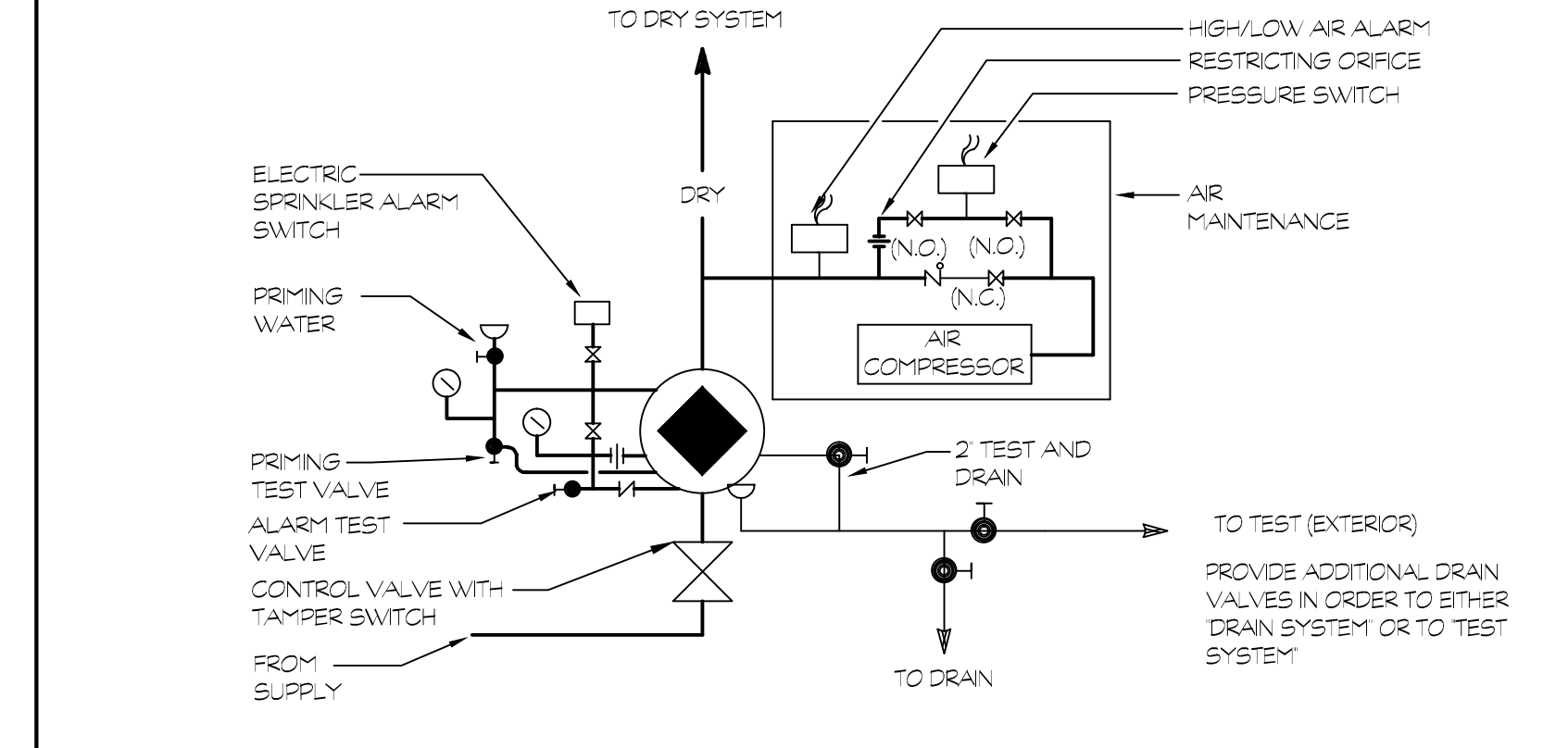
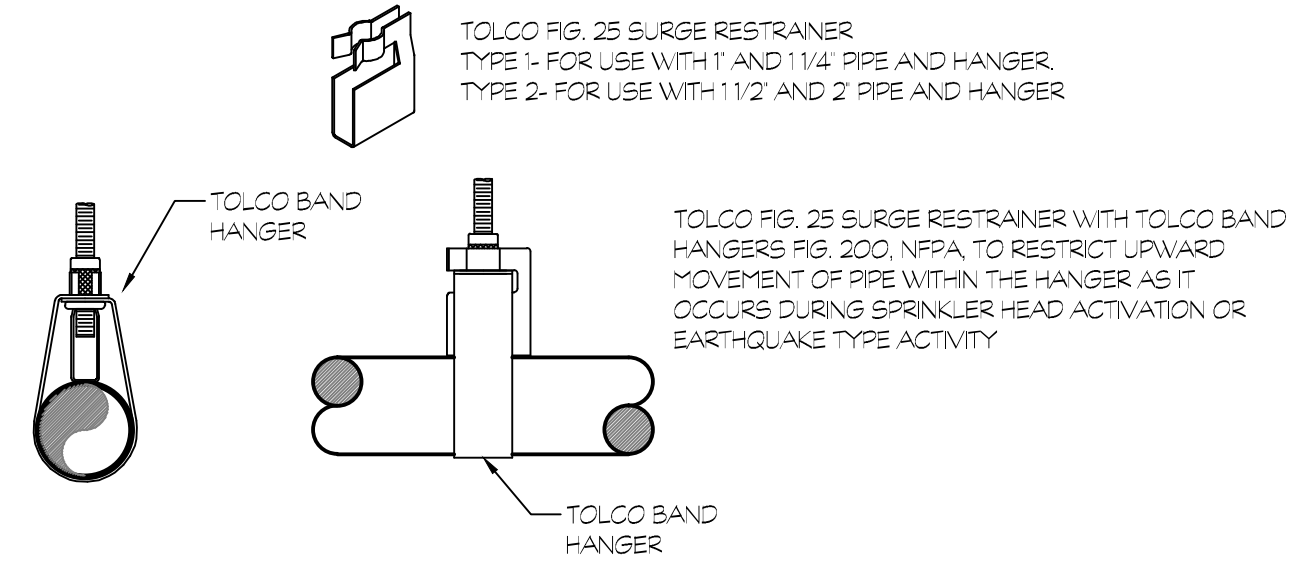


ATTIC FIRE PROTECTION PLAN
 SCALE: 1/4" = 1'-0"
 NORTH



Revision	Description	Date	Revised By

EARTHQUAKE BRACE AND SURGE RESTRAINT COMPONENTS
 TOLCO FIG. 1000 FAST CLAMPS U.L. LISTED. MUST BE USED WITH TOLCO U.L. LISTED ATTACHMENTS FIG. 808 OR FIG. 810 SWIVEL FITTINGS OR FIG. 875 OR FIG. 808 STRAIGHT FITTINGS

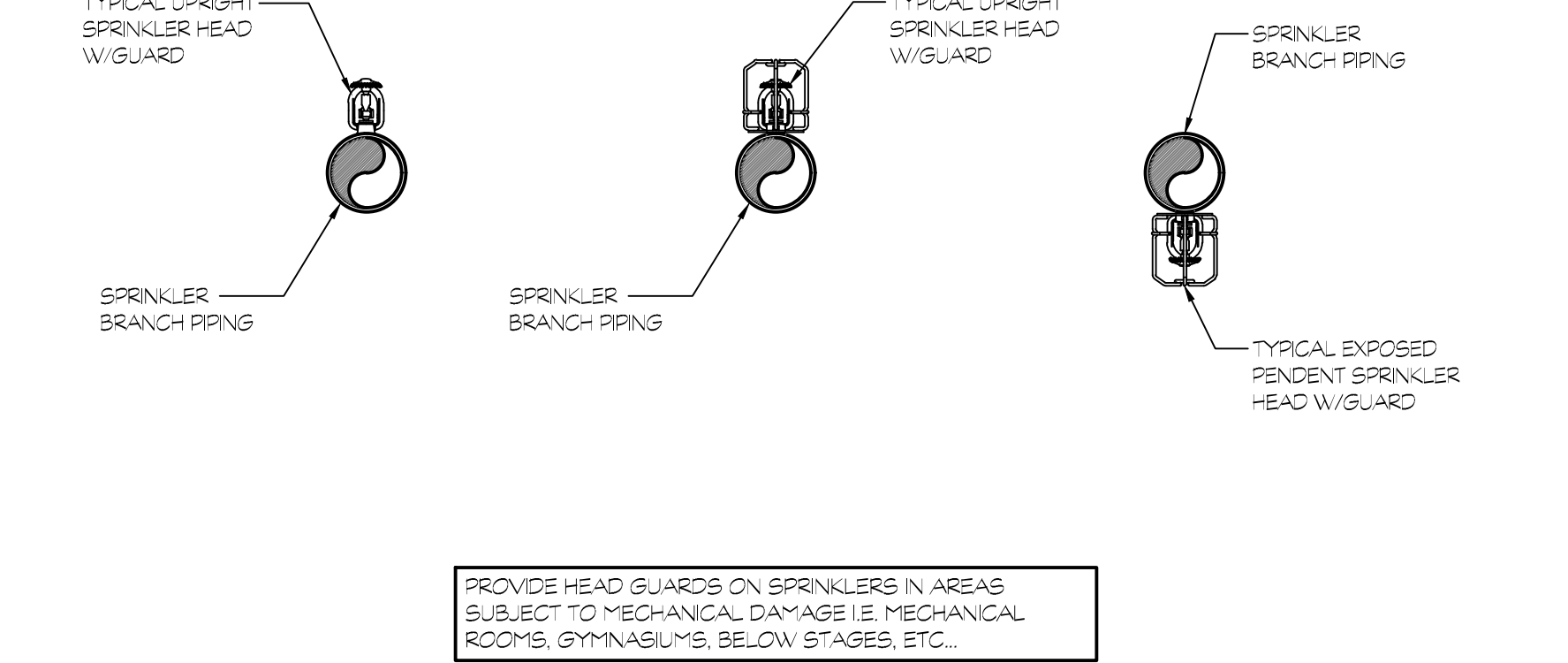
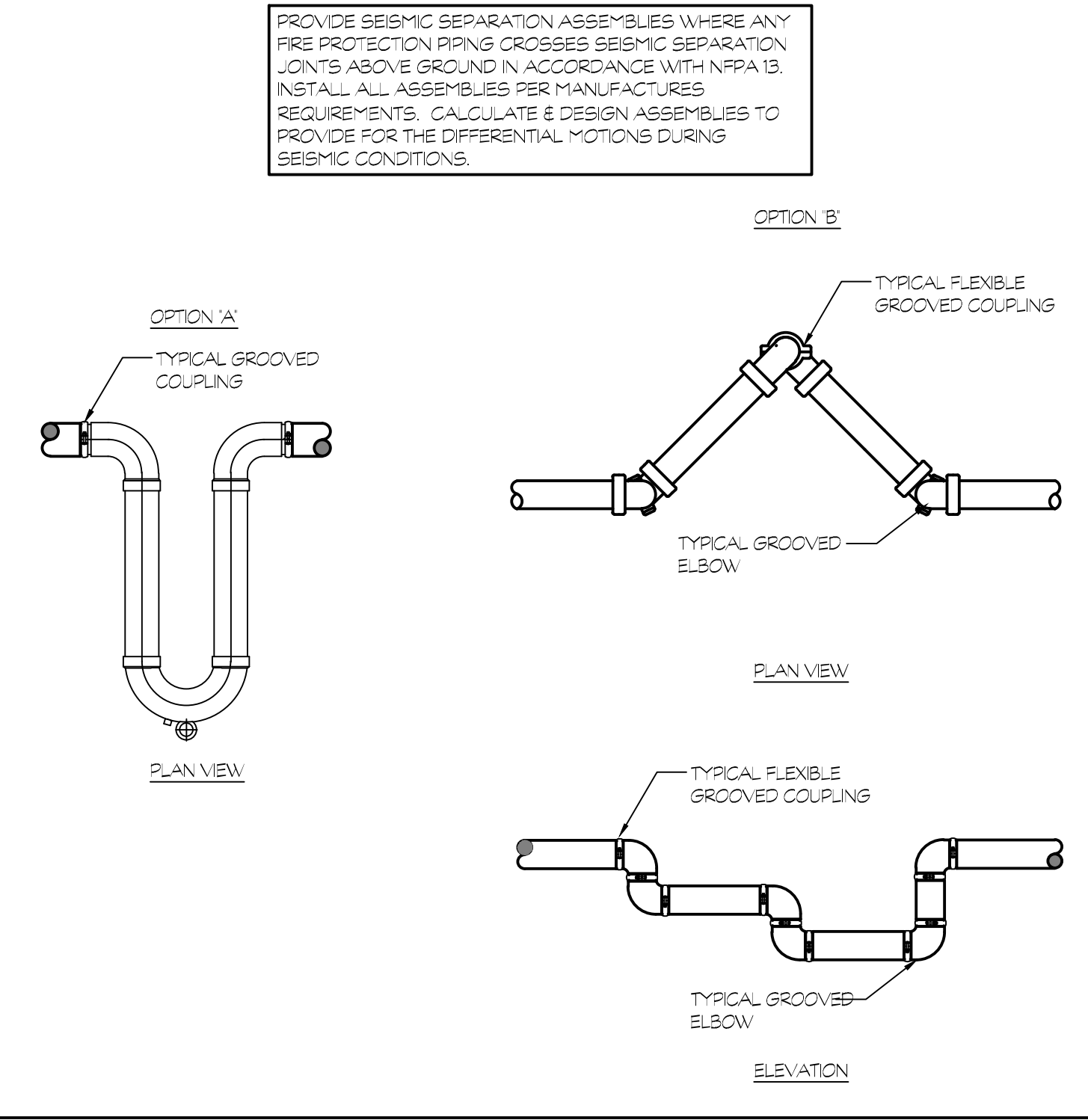
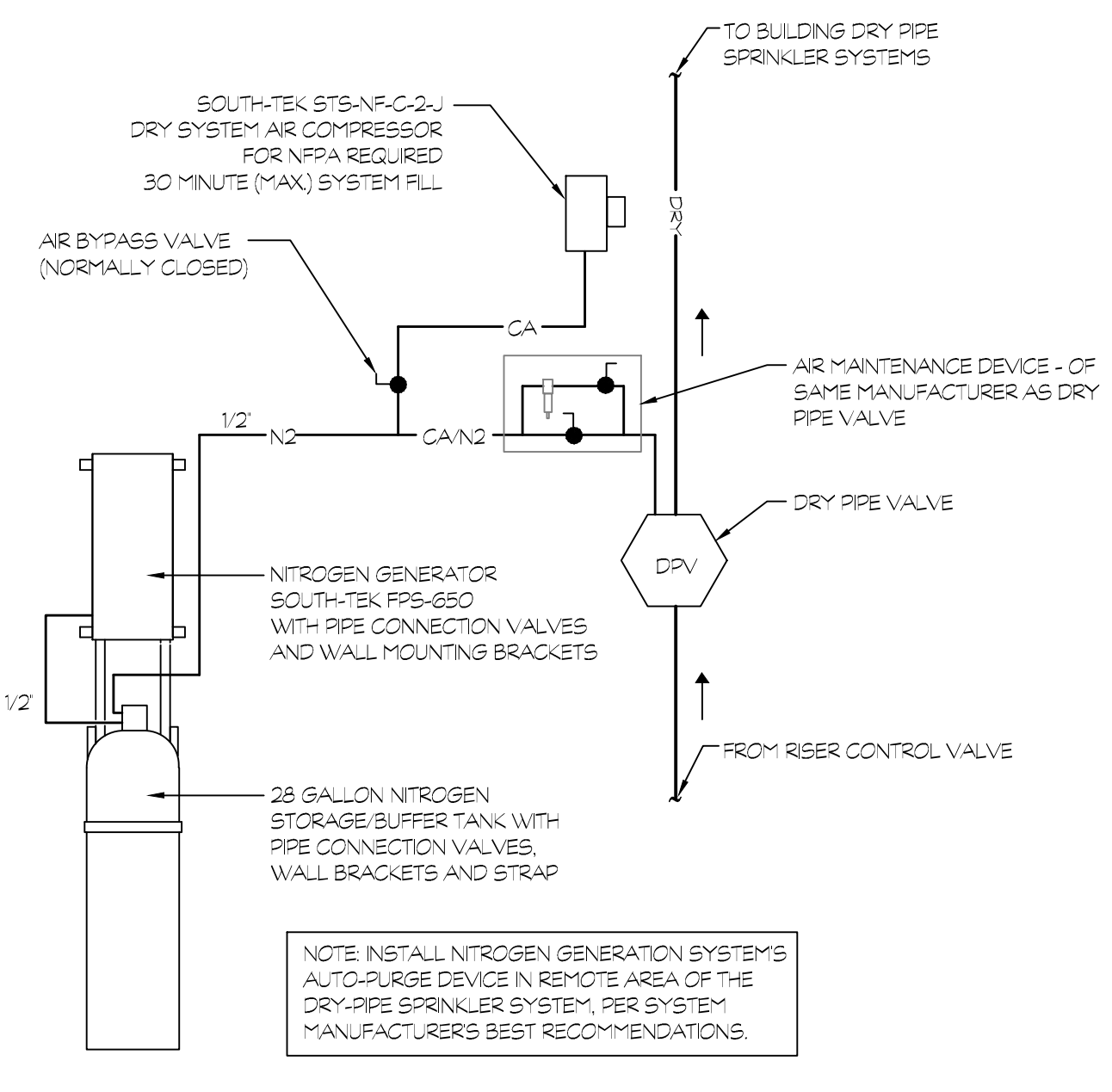
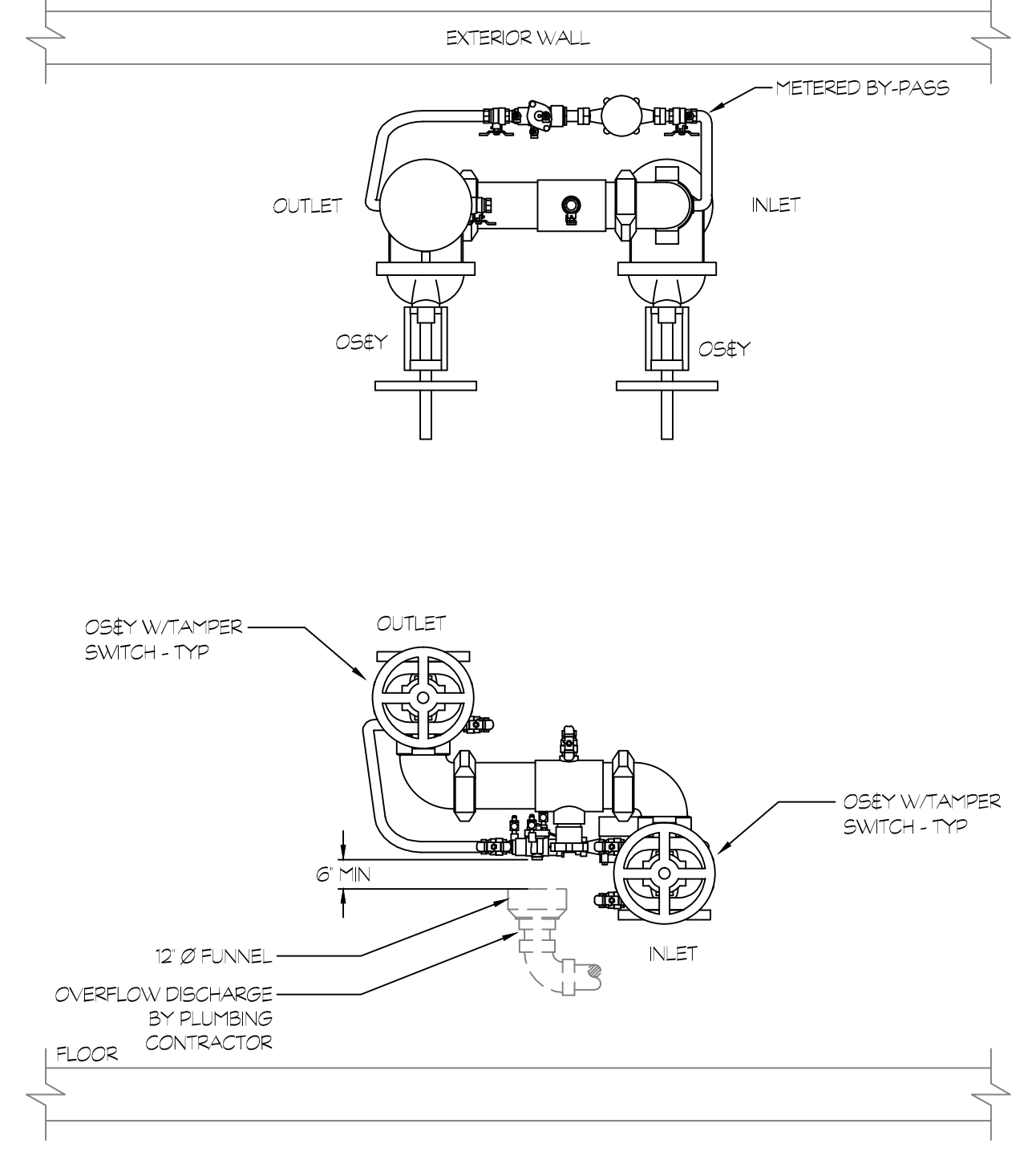


SEISMIC PIPING HANGER BRACING DETAIL
 NOT TO SCALE

DRY PIPE VALVE SCHEMATIC
 NOT TO SCALE

INSPECTORS TEST CONNECTION DETAIL
 NOT TO SCALE

CONCEALED PENDENT SPRINKLER HEAD DETAILS
 NOT TO SCALE

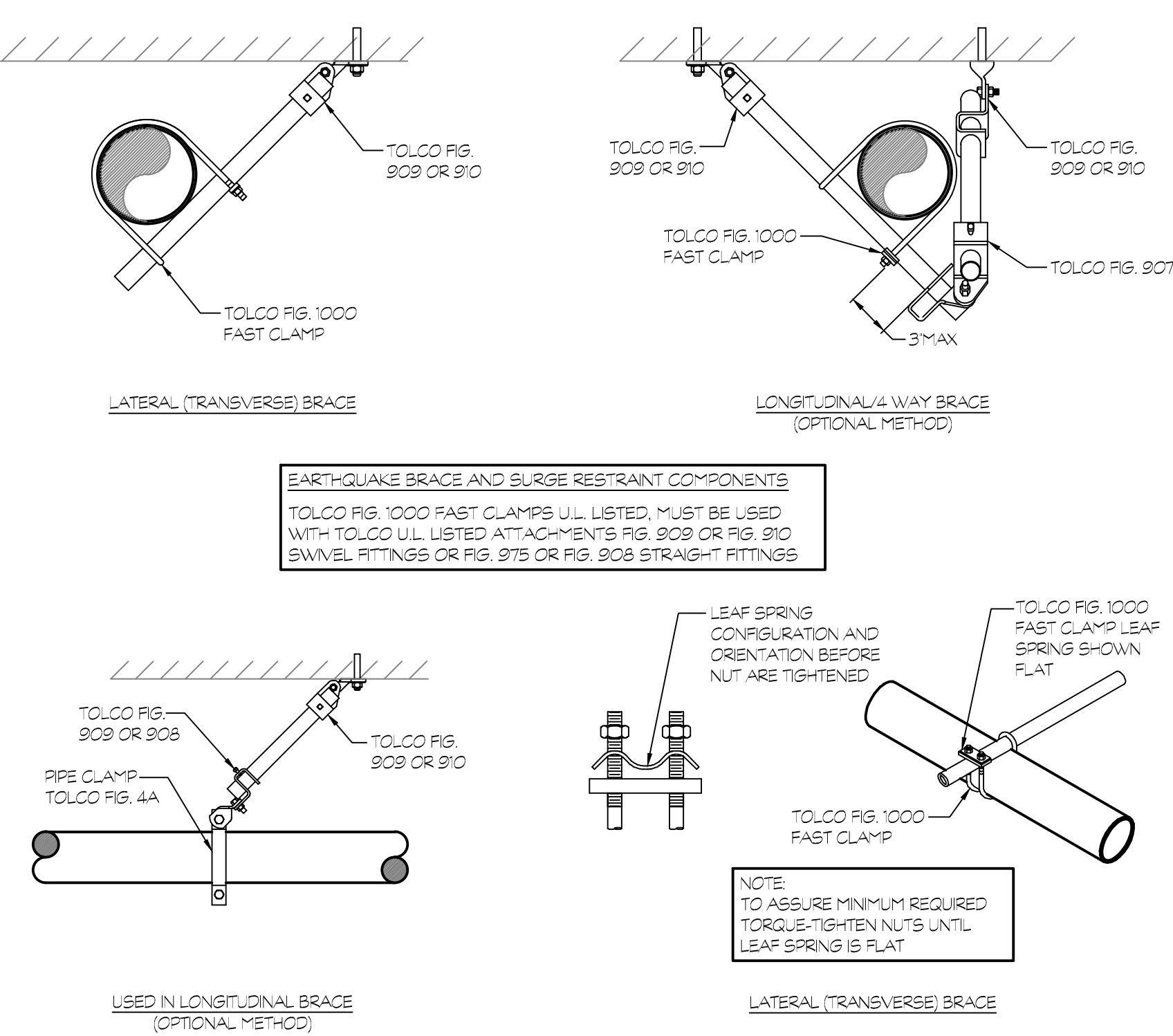
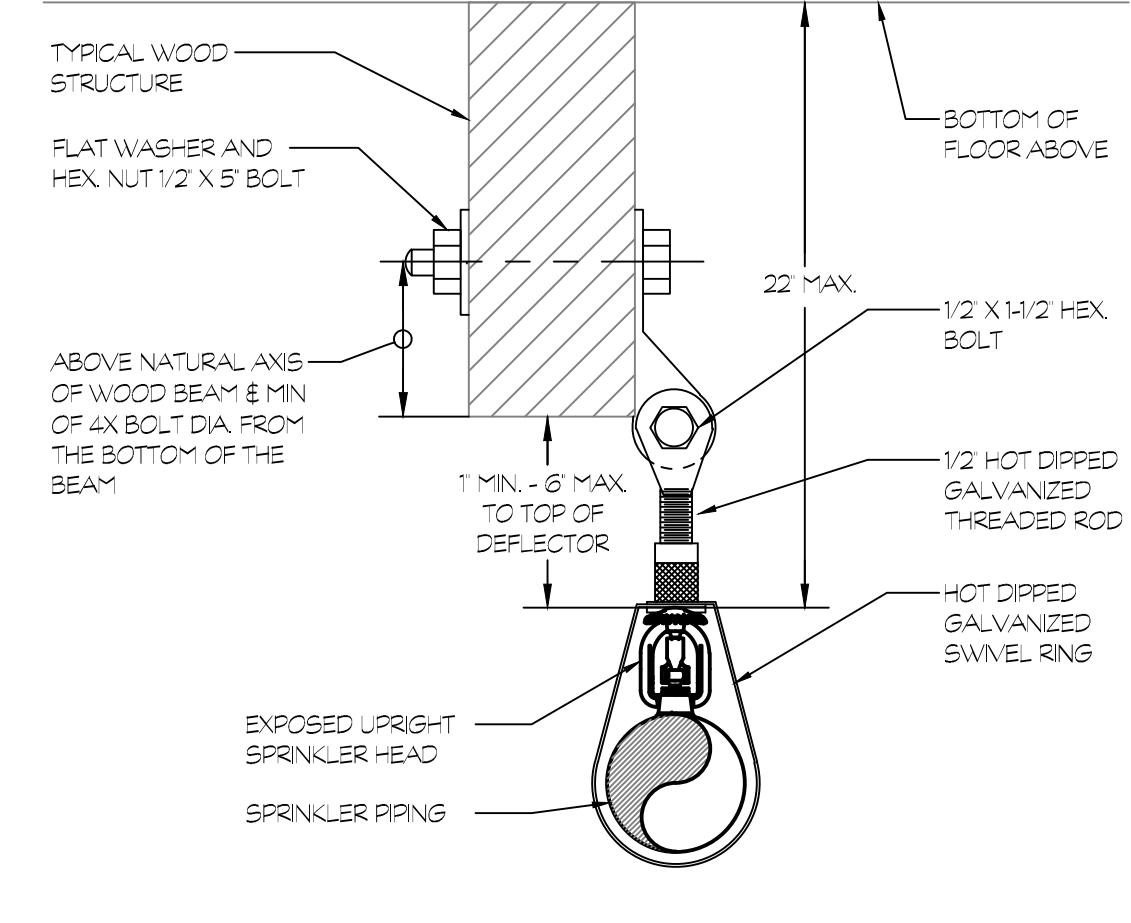
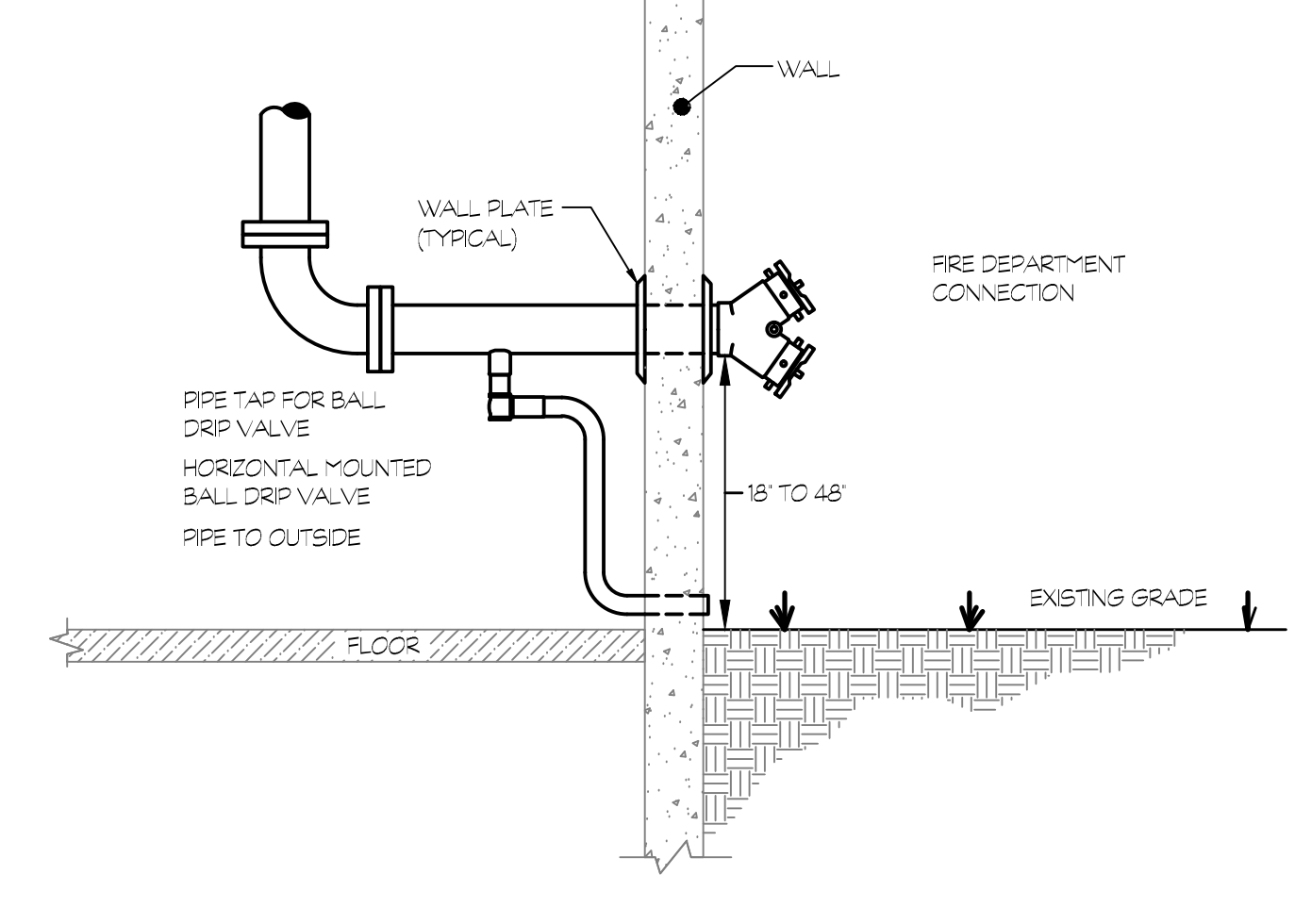
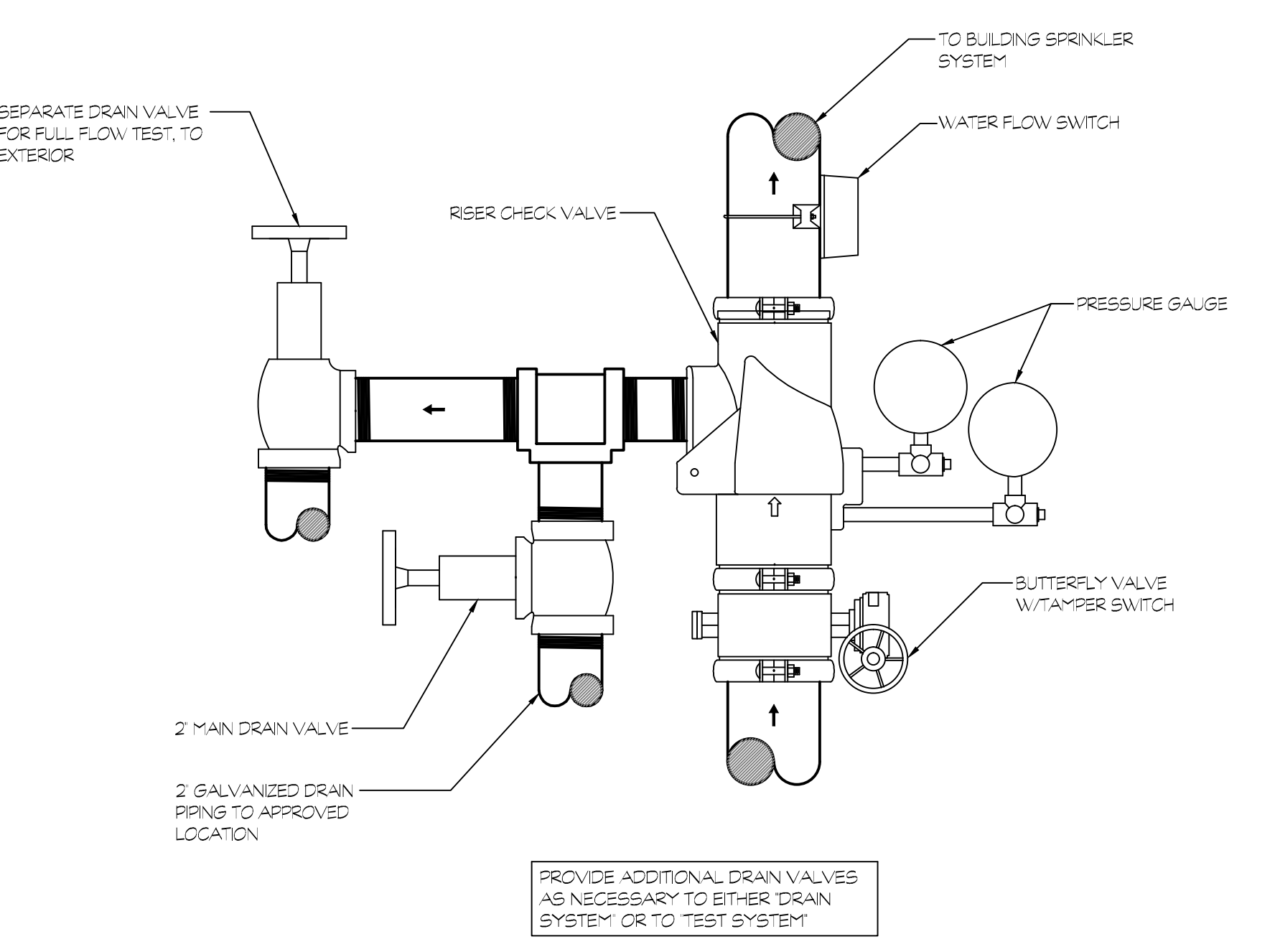


BACKFLOW PREVENTION DETAIL
 NOT TO SCALE

NITROGEN GENERATION SYSTEM SCHEMATIC
 NOT TO SCALE

SEISMIC SEPARATION ASSEMBLY
 NOT TO SCALE

EXPOSED SPRINKLER HEAD DETAILS
 NOT TO SCALE



RISER CHECK VALVE ASSEMBLY
 NOT TO SCALE

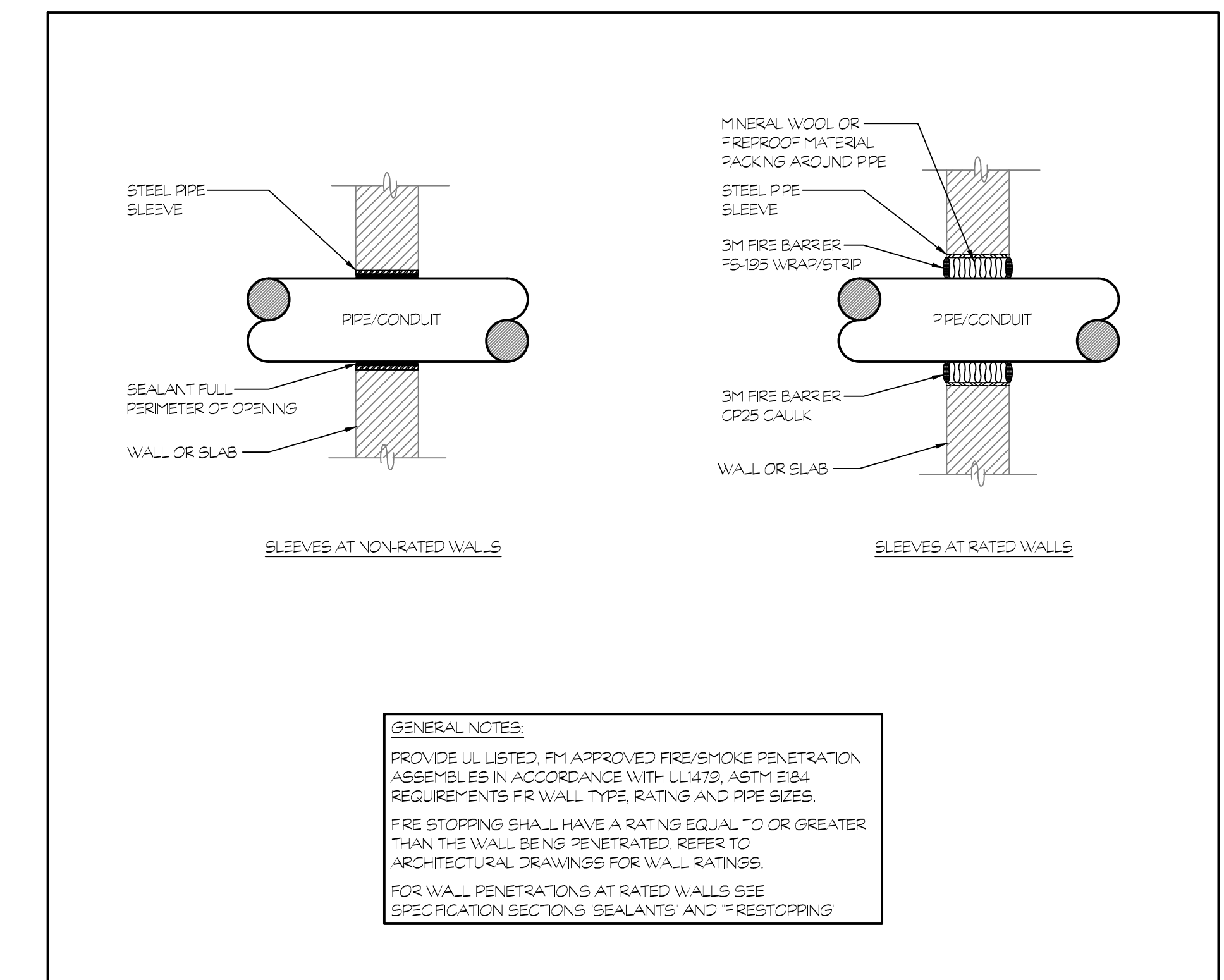
WALL MOUNTED FIRE DEPARTMENT CONNECTION
 NOT TO SCALE

PIPE HANGER DETAIL (WOOD STRUCTURE)
 NOT TO SCALE

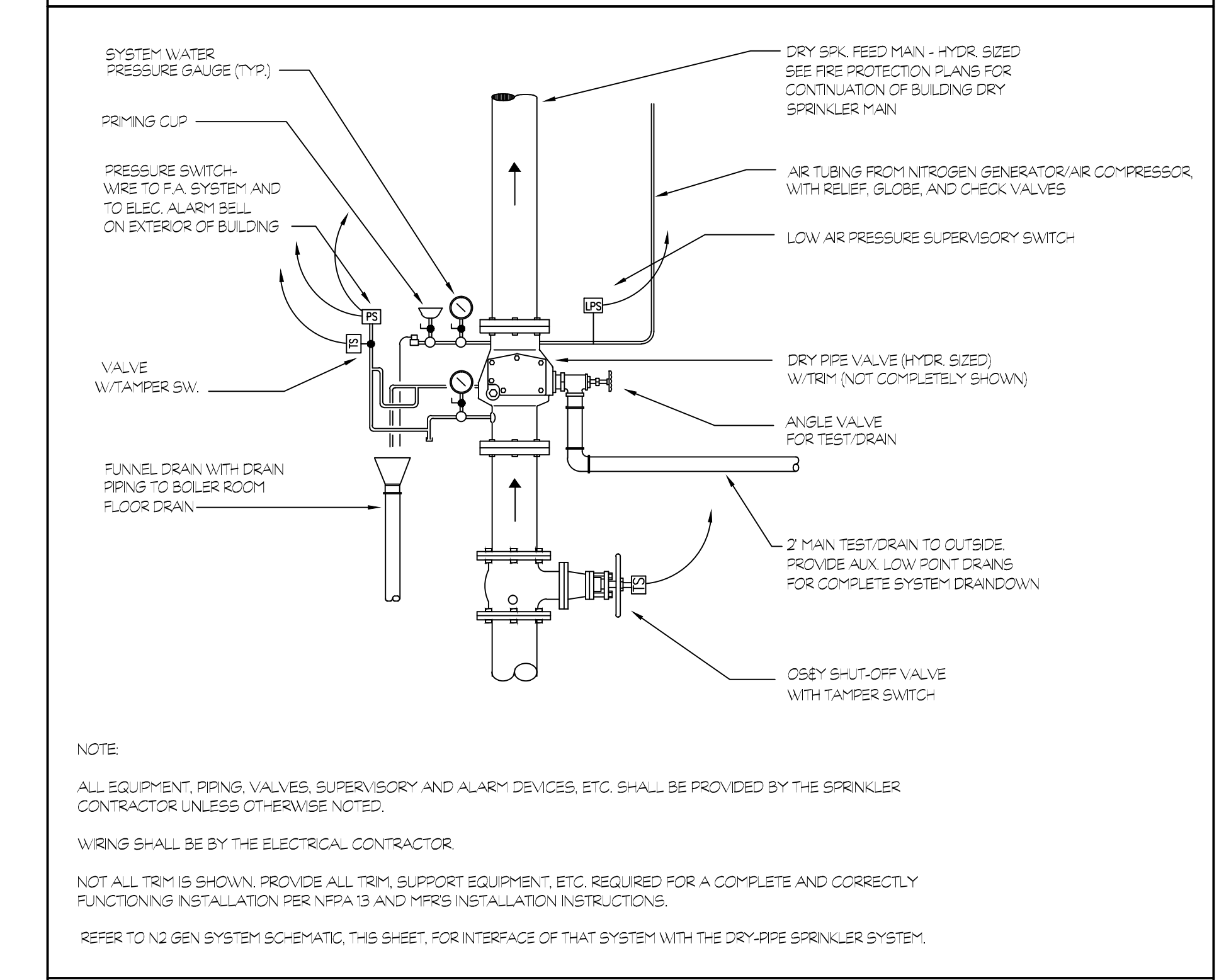
SEISMIC PIPING HANGER BRACING DETAIL
 NOT TO SCALE



Revision	Description	Date	Revised By

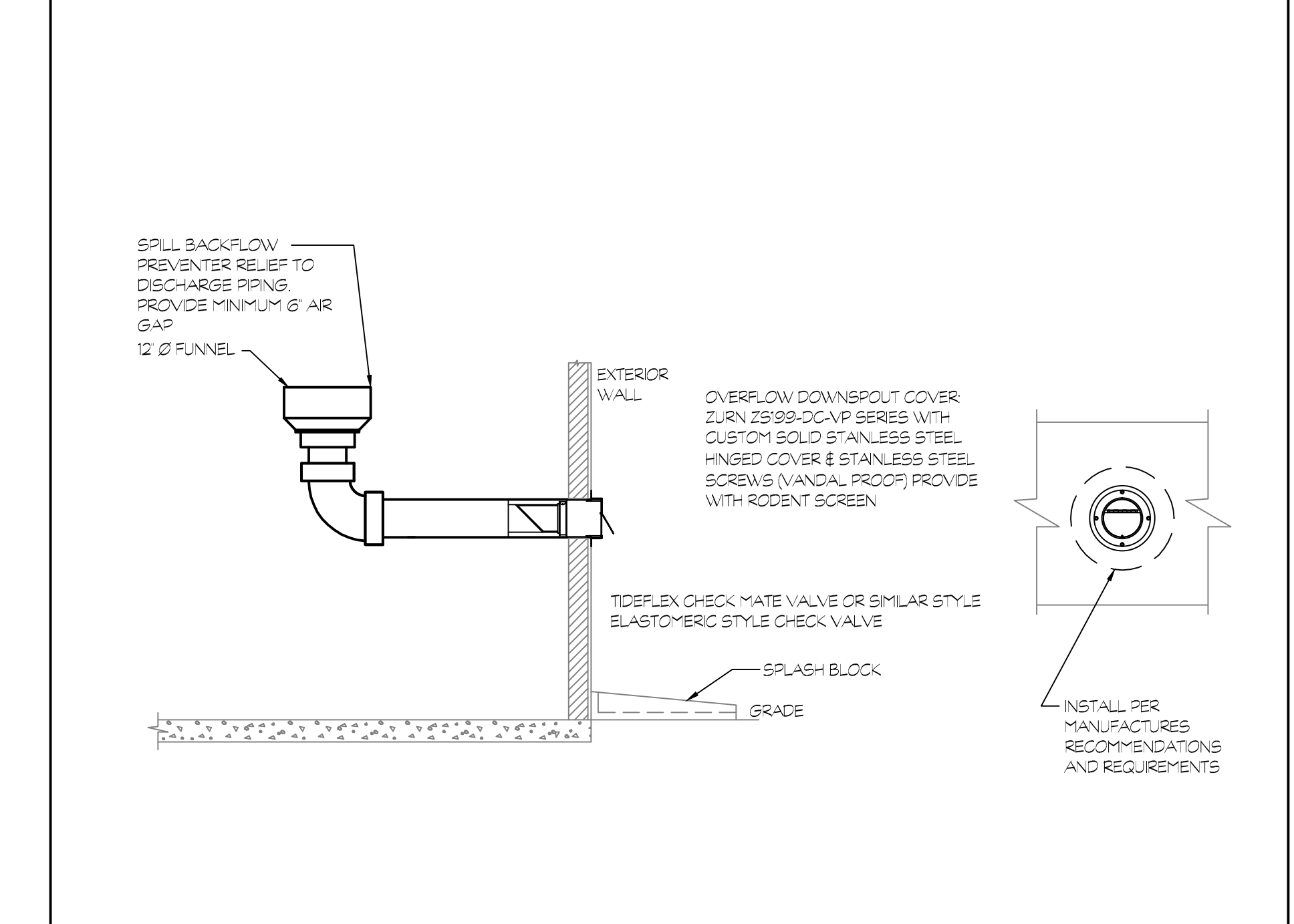


PIPE PENETRATION DETAIL
 NOT TO SCALE



DETAIL OF DRY PIPE RISER AND DRY PIPE VALVE ASSEMBLY
 NOT TO SCALE

INSTALL OVERFLOW SET UP SERVING THE FIRE PROTECTION BACKFLOW PREVENTER (FIRE PROTECTION BACKFLOW PREVENTER SHALL BE PROVIDED AND INSTALLED BY THE FIRE PROTECTION CONTRACTOR). COORDINATE HEIGHT OF RP BFP WITH FIRE PROTECTION CONTRACTOR TO ACCOMMODATE OVERFLOW DISCHARGE PIPING PRIOR TO INSTALLATION OF EITHER ONE.



BACKFLOW PREVENTION OVERFLOW PIPING DETAIL
 NOT TO SCALE



Revision	Description	Date	Revised By

ELECTRICAL SYMBOLS	
(NOT ALL SYMBOLS ARE USED)	
	ELECTRICAL PANEL, 120/208 VOLT
	UTILITY COMPANY COMBINATION METER/SERVICE SWITCH (CLEP APPROVED)
	TELEPHONE OUTLET, SUBLETTER 'V' INDICATES VOICE AND SUBLETTER 'D' INDICATES DATA
	TELEPHONE OUTLET, SUBLETTER 'W' INDICATES WALL MOUNTED
	MOTION SENSOR
	TELEVISION OUTLET
	SECURITY CAMERA
	FIRE ALARM PULL STATION
	FIRE ALARM HORN STROBE DEVICE
	FIRE ALARM STROBE DEVICE
	FIRE ALARM SMOKE DETECTOR
	FIRE ALARM CONTROL PANEL
	FIRE ALARM CARBON MONOXIDE DETECTOR

ABBREVIATIONS	
A	AMPERES
AF	ABOVE FINISHED FLOOR
AFG	ABOVE FINISHED GRADE
C	CONDUIT
CAM	CAMERA
CR	CARD READER
D	DATA
ER	EXISTING TO REMAIN
JB	JUNCTION BOX
M/B	MAIN BREAKER
MLO	MAIN LUG ONLY
MS	MOTION SENSOR
MTD	MOUNTED
NL	NEW LOCATION
PNL	PANELBOARD
RELOC	RELOCATE/RELOCATED AT THE SAME HEIGHT (PER NEC REQUIREMENTS)
RE	RELOCATE EXISTING
RR	REMOVE AND REINSTALL
TV	TELEVISION OUTLET
V	VOICE
UON	UNLESS OTHERWISE NOTED
WP	WEATHERPROOF

GENERAL NOTES - ELECTRICAL

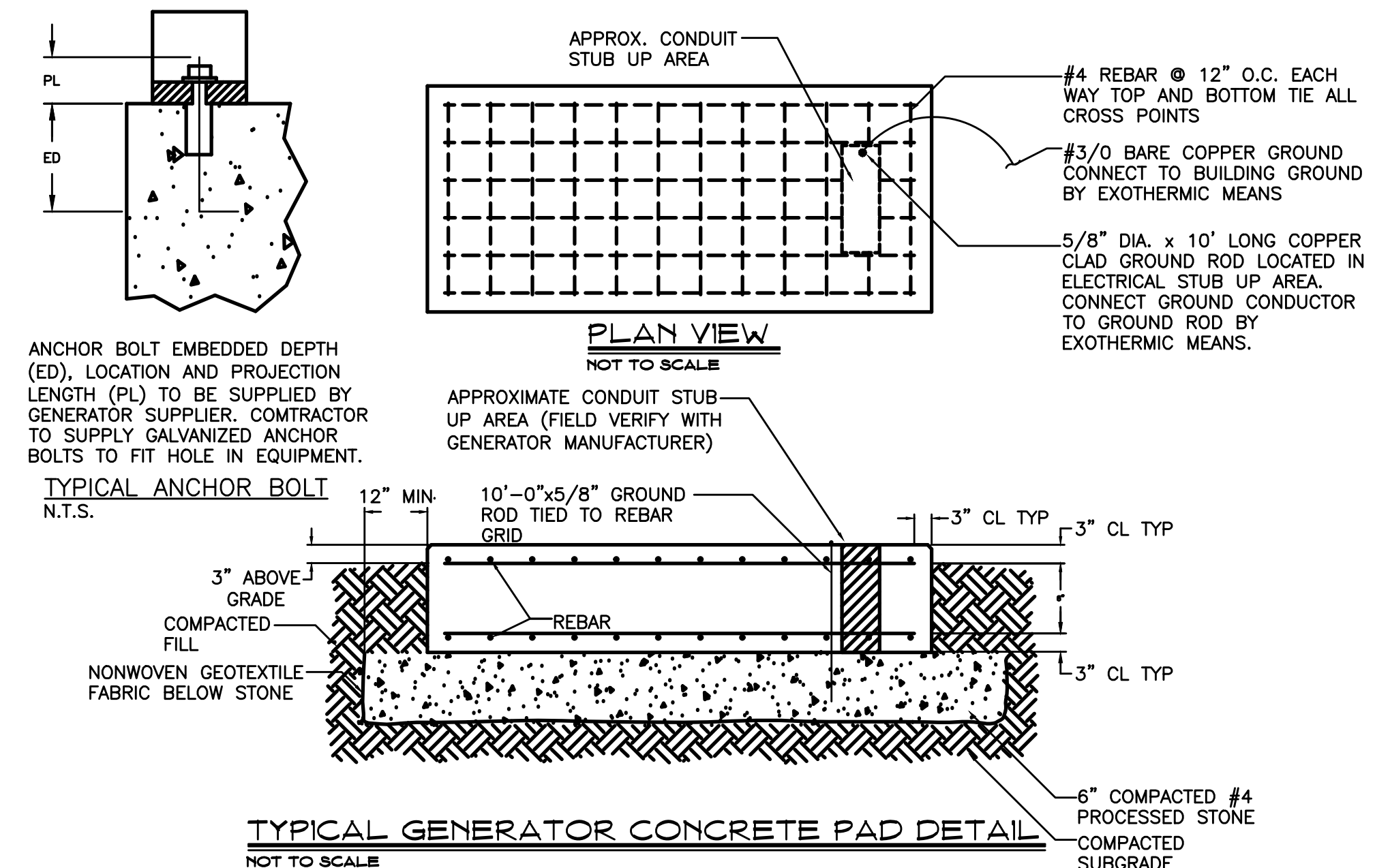
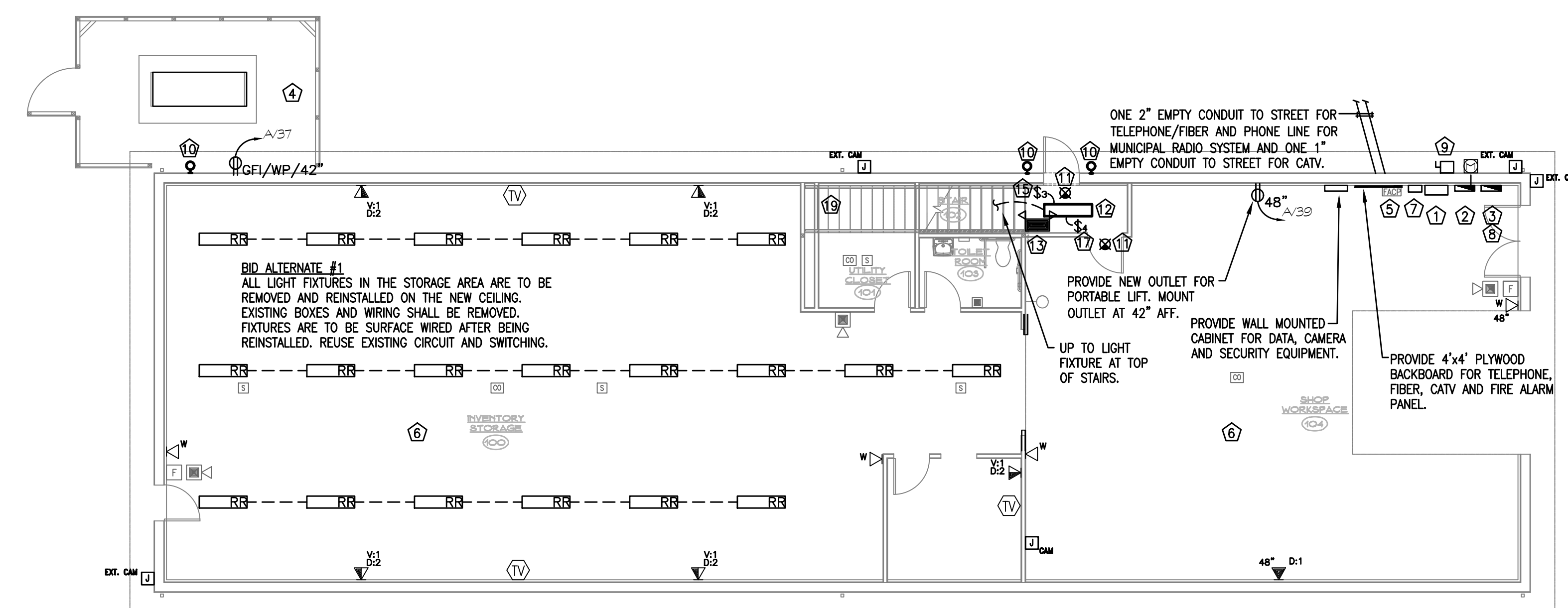
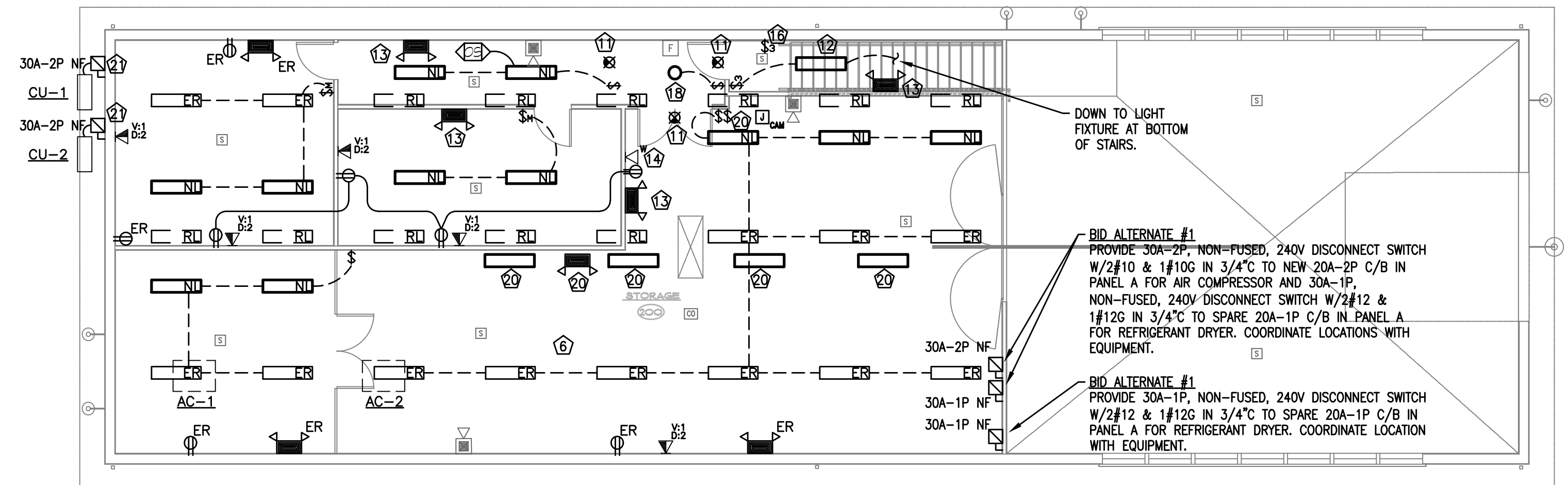
- SPECIFICATION SECTIONS, GENERAL CONDITIONS, SUPPLEMENTAL GENERAL CONDITIONS AND DRAWINGS ARE INTEGRAL PARTS OF CONTRACT DOCUMENTS.
- SYSTEM COMPONENTS ARE LOCATED APPROXIMATELY ON DRAWINGS. BASE ACTUAL LOCATIONS ON FIELD VERIFICATION OF EXISTING BUILDING CHARACTERISTICS INCLUDING BUT NOT LIMITED TO STRUCTURAL, MECHANICAL, ELECTRICAL & ARCHITECTURAL COMPONENTS.
- ALL WORK AND ACTION DEPICTED AND DESCRIBED IN CONTRACT DOCUMENTS SHALL BE PERFORMED BY THE CONTRACTOR UNLESS SPECIFICALLY NOTED OTHERWISE.
- REFERENCE TO SPECIFIC SUB-CONTRACTORS SUCH AS "MECHANICAL," "ELECTRICAL," ETC. ARE INTENDED TO SUGGEST POSSIBLE DIVISION OF RESPONSIBILITY. PRIME CONTRACTOR SHALL BE RESPONSIBLE FOR COORDINATION AND EXECUTION OF ALL WORK.
- OBTAIN AND PAY FOR ALL REQUIRED PERMITS AND INSPECTIONS.
- ALL EQUIPMENT, MATERIALS AND RELATED SYSTEM COMPONENTS SHALL BE NEW UNLESS NOTED OTHERWISE.
- REPAIR AND REPLACE AT NO COST TO OWNER ALL EQUIPMENT AND MATERIALS DAMAGED DURING CONSTRUCTION.
- CIRCUITING DEPICTED FOR RECEPTACLES & LIGHTING FIXTURES DEFINES GROUPINGS OF FIXTURES, DEVICES AND COMPONENTS AND REQUIRED CONDUCTORS. CIRCUITING IS NOT INTENDED TO DEFINE CONDUIT LOCATIONS.
- STUDY THE PROJECT MANUAL & DRAWINGS OF OTHER DISCIPLINES INCLUDING ARCHITECTURAL, STRUCTURAL, CIVIL & MECHANICAL.
- PROVIDE SUPPORT/BRACING OF EQUIPMENT AND BUILDING SERVICES FOR SEISMIC RESTRAINT AS REQUIRED BY CODE.
- ALL WORK SHALL BE PERFORMED IN COMPLIANCE WITH THE APPLICABLE CODES IN THE ORDINANCES AND THE REGULATORY AGENCIES HAVING JURISDICTION.
- CONTRACTORS SHALL PROVIDE ALL REQUIRED SLEEVES AND SEALS FOR PIPES OR CONDUIT PENETRATING WALLS OR FLOOR SLABS WITH UL LISTED FIRE STOPPING SEALANT WHERE REQUIRED.
- ELECTRICAL CONDUITS & BOXES SHALL BE CONCEALED IN WALLS OR ABOVE CEILINGS WHEREVER POSSIBLE.
- FURNISH AND INSTALL GFCI RECEPTACLES LOCATED IN AREAS WHERE RECEPTACLES ARE INSTALLED WITHIN 1.8M (6 FT) OF THE OUTSIDE EDGE OF THE SINK.
- ALL PENETRATIONS THRU RATED WALLS & CEILINGS SHALL BE SEALED USING UL LISTED METHODS APPROPRIATE FOR INDICATED RATINGS.
- NO PENETRATIONS ARE ALLOWED INTO STAIR ENCLOSURES EXCEPT AS REQUIRED FOR SERVICES UTILIZED IN THE STAIR.
- ALL DEVICES WITHIN EXISTING AND NEW RATED WALLS (ON BOTH SIDES) SHALL BE SURFACE MOUNTED, REFER TO CODE PLANS FOR WALL RATING.

OTHER ELECTRICAL NOTES

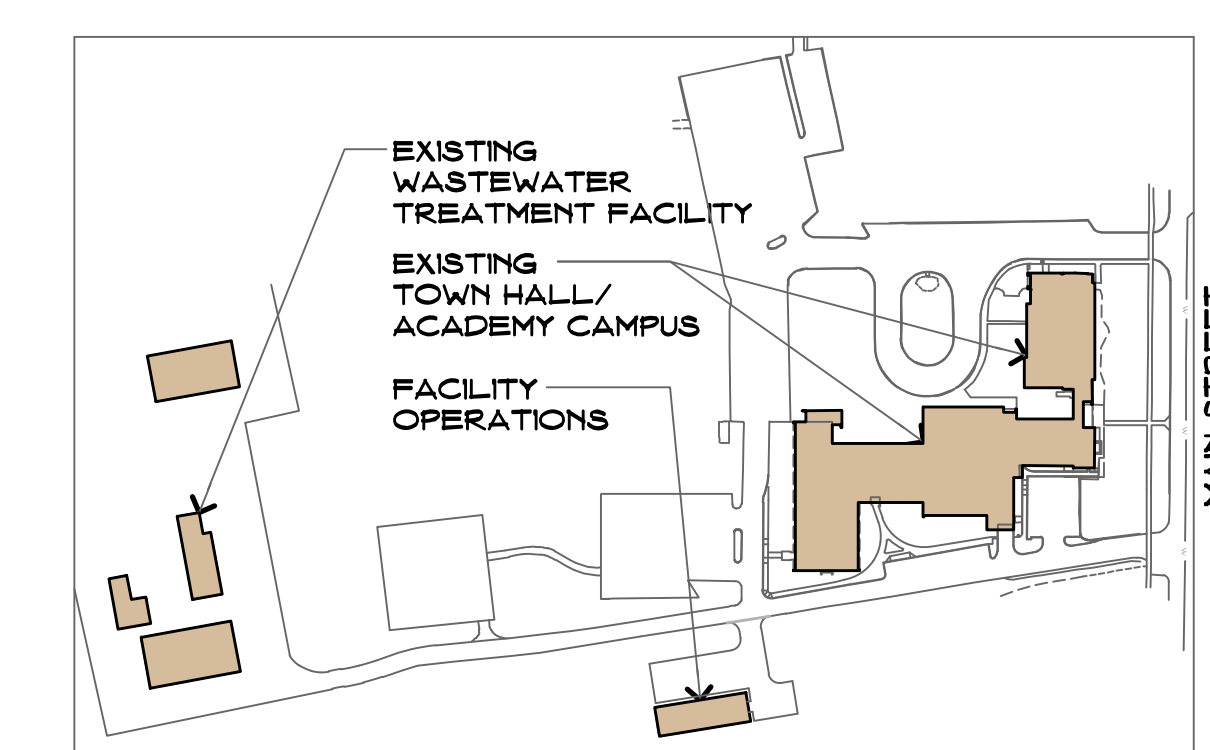
- CONTRACTOR SHALL COORDINATE THE LOCATION AND QUANTITY OF ALL MECHANICAL EQUIPMENT WITH THE MECHANICAL CONTRACTOR. PROVIDE POWER WIRING TO ALL NEW EQUIPMENT, REFER TO MECHANICAL DRAWINGS FOR EXACT LOCATIONS AND INFORMATION.
- ALL FIXTURES SHALL BE SUPPORTED INDEPENDENTLY OF THE FINISHED CEILING OR STRUCTURE AND SHALL BE SEISMICALLY SUPPORTED AS REQUIRED BY CODE AND THE AUTHORITY HAVING JURISDICTION.
- ALL BRANCH CIRCUIT WIRING SHOWN IS DIAGRAMMATIC. EXACT ROUTING SHALL BE FIELD COORDINATED TO CLEAR THE WORK OF OTHER TRADES.
- IT IS NOT THE INTENTION TO SHOW EVERY FITTING, HANGER, WIRE OR DEVICE. ALL SUCH ITEMS SHALL BE FURNISHED AND INSTALLED AS NECESSARY FOR A COMPLETE SYSTEM.
- CONTRACTOR SHALL DETERMINE THE QUANTITY OF CONDUCTORS REQUIRED FOR PROPER OPERATION OF ALL SWITCHING SCHEMES.
- NO CONDUIT SHALL BE ALLOWED IN CONCRETE SLABS, UNLESS SPECIFICALLY APPROVED BY THE STRUCTURAL ENGINEER.
- LABEL ALL UNUSED BREAKERS AS SPARE AND TRIP TO THE OFF POSITION.
- ALL DEVICE COLORS SHALL BE WHITE.
- ALL PANEL DIRECTORIES SHALL BE UPDATED AT THE COMPLETION OF THE PROJECT IN ACCORDANCE WITH NEC 408.4.
- CONTRACTOR SHALL COORDINATE ALL CAMERA LOCATIONS WITH OWNER BEFORE ROUGHING IN.
- CONTRACTOR SHALL REMOVE EXISTING INVERTER FOR EXTERIOR LIGHTS AND TURN OVER TO OWNER.

ELECTRICAL KEYNOTES

- EXISTING 400A MANUAL TRANSFER SWITCH TO BE REMOVED AND REPLACE WITH 400A SERVICE ENTRANCE RATED AUTOMATIC TRANSFER SWITCH BY CLIMBING. REFER TO ONE-LINE RISER ON DRAWING E2 FOR FURTHER INFORMATION.
- EXISTING 400A MAIN CIRCUIT BREAKER CABINET TO REMAIN.
- EXISTING 400A MAIN LUG PANEL "A" TO REMAIN.
- NEW CUMMINGS 50KW NATURAL GAS FIRED GENERATOR ON PAD. GENERATOR TROUBLE ALARM SHALL BE REMOTELY MONITORED THROUGH FIRE ALARM SYSTEM. GENERATOR SHALL HAVE 175A OUTPUT CIRCUIT BREAKER, LEVEL 1 ENCLOSURE, 6 AMP BATTERY CHARGER, COOLANT HEATER AND CRANKCASE HEATER.
- NEW FIRE ALARM CONTROL PANEL SYSTEM SHALL BE BY THE SAME MANUFACTURER AS THE TOWN OF GLASTONBURY TOWN HALL SYSTEM AND SHALL ALARM LOCALLY. SYSTEM SHALL MONITOR GENERATOR FOR TROUBLE STATUS.
- EXISTING LIGHTING AND POWER LOCATIONS IN THESE AREAS SHALL REMAIN.
- NEW PV SYSTEM INVERTER. COORDINATE EXACT LOCATION WITH OWNER IN FIELD.
- INSTALL 150A-3P CIRCUIT BREAKER IN POSITION 38/40/42 FOR PHOTOVOLTAIC SYSTEM. CIRCUIT BREAKER SHALL BE CLEARLY LABELED "PV SYSTEM FEED".
- PROVIDE 200A, 240V, NEMA 3R DISCONNECT ON EXTERIOR OF BUILDING NEXT TO UTILITY METER FOR PV SYSTEM DISCONNECT. PROVIDE LABEL ON SWITCH STATING "PHOTOVOLTAIC SYSTEM DISCONNECT SWITCH". REFER TO PV SYSTEM GENERAL NOTES ON DRAWING E2 FOR FURTHER INFORMATION.
- PROVIDE BASELITE MC12/21A/BAX/UGR/B13/SOLWTM/LED10W/3K/120/277V LED LIGHT FIXTURE. FIXTURE MOUNTING HEIGHT SHALL MATCH EXISTING. EXACT LOCATION OF FIXTURES TO BE DETERMINED IN FIELD. CONNECT NEW FIXTURE TO EXTERIOR BUILDING LIGHTING CIRCUIT.
- PROVIDE NEW EXIT SIGN TO MATCH EXISTING AS CLOSE AS POSSIBLE IN LOCATION INDICATED. EXIT SIGN SHALL BE WIRED AHEAD OF SWITCH LEG, TYPICAL OF FIVE.
- PROVIDE NEW LIGHT FIXTURES IN STAIRWELL TO MATCH EXISTING AS CLOSE AS POSSIBLE IN LOCATION INDICATED. CONNECT TO CLOSEST LIGHTING CIRCUIT, TYPICAL OF TWO.
- PROVIDE NEW EMERGENCY LIGHT FIXTURES TO MATCH EXISTING AS CLOSE AS POSSIBLE IN LOCATION INDICATED. EMERGENCY LIGHT SHALL BE WIRED AHEAD OF SWITCH LEG, TYPICAL OF FIVE.
- PROVIDE 2#12 & 1#12G IN 3/4" FROM NEW RECEPTACLES TO SPARE 20A-1P CIRCUIT BREAKER IN PANEL A.
- EXISTING LIGHT SWITCH TO REMAIN. EXTEND/ALTER CONDUIT/WIRING TO NEW LIGHT FIXTURE AS REQUIRED TO MAINTAIN SWITCHING.
- RELOCATE EXISTING LIGHT SWITCH TO LOCATION INDICATED ON PLAN. EXTEND/ALTER CONDUIT/WIRING TO NEW SWITCH LOCATION AS REQUIRED TO MAINTAIN SWITCHING.
- PROVIDE NEW FOUR-WAY LIGHT SWITCH FOR STAIRWELL FIXTURES. PROVIDE ADDITIONAL WIRING TO NEW LIGHT FIXTURE AS REQUIRED.
- PROVIDE NEW 6" ROUND LED DOWNLIGHT EQUAL TO JUNO 60LR6S 15LM 35K 80CRI 120 ZT W/WH. CONNECT TO CLOSEST LIGHTING CIRCUIT.
- EXISTING AIR COMPRESSOR TO BE RELOCATED TO THE RIGHT OF THE MANIFOLD. RELOCATE EXISTING DISCONNECT SWITCH AND EXTEND/ALTER CONDUIT/WIRING AS REQUIRED TO NEW COMPRESSOR LOCATION. COORDINATE LOCATION OF DISCONNECT SWITCH IN FIELD.
- PROVIDE LED STRIPLIGHT FIXTURES IN ATTIC EQUAL TO COLUMBIA LR04-35LW-EU. PROVIDE SWITCH IN STORAGE AREA AND LABEL SWITCH "ATTIC LIGHTS". CONNECT FIXTURES TO MEZZANINE LIGHTING CIRCUIT. PROVIDE NEW EMERGENCY LIGHT AFFIXED TO ROOF STRUCTURE NEAR ATTIC HATCH.
- PROVIDE 30A-2P, NON-FUSE, 240V, NEMA 3R DISCONNECT ON BUILDING EXTERIOR FOR OUTDOOR CONDENSING UNITS. PROVIDE 2#12 & 1#12G IN 3/4" TO NEW 20A-2P C/B IN PANEL A FOR CONDENSER CU-1 AND 2#12 & 1#12G IN 3/4" TO NEW 20A-2P C/B IN PANEL A FOR CONDENSER CU-2. PROVIDE 2#12 & 1#12G IN 3/4" FROM EACH CONDENSER TO CORRESPONDING AC UNIT ABOVE MEZZANINE CEILING FOR AC CONTROL.



- NOTES:**
- INSPECT AND COMPACT ALL SOIL. PROVIDE 6" BASE OF ITEM #4 PROCESSED STONE, COMPACTED.
 - ALL EXPOSED EDGES SHALL BE 3/4" CHAMFER.
 - CONCRETE SHALL BE 4000 PSI @ 7 DAYS.
 - LENGTH AND WIDTH OF PAD TO BE 12" WIDER ON EACH SIDE THAN GENERATOR ENCLOSURE.



Revision	Description	Date	Revised By