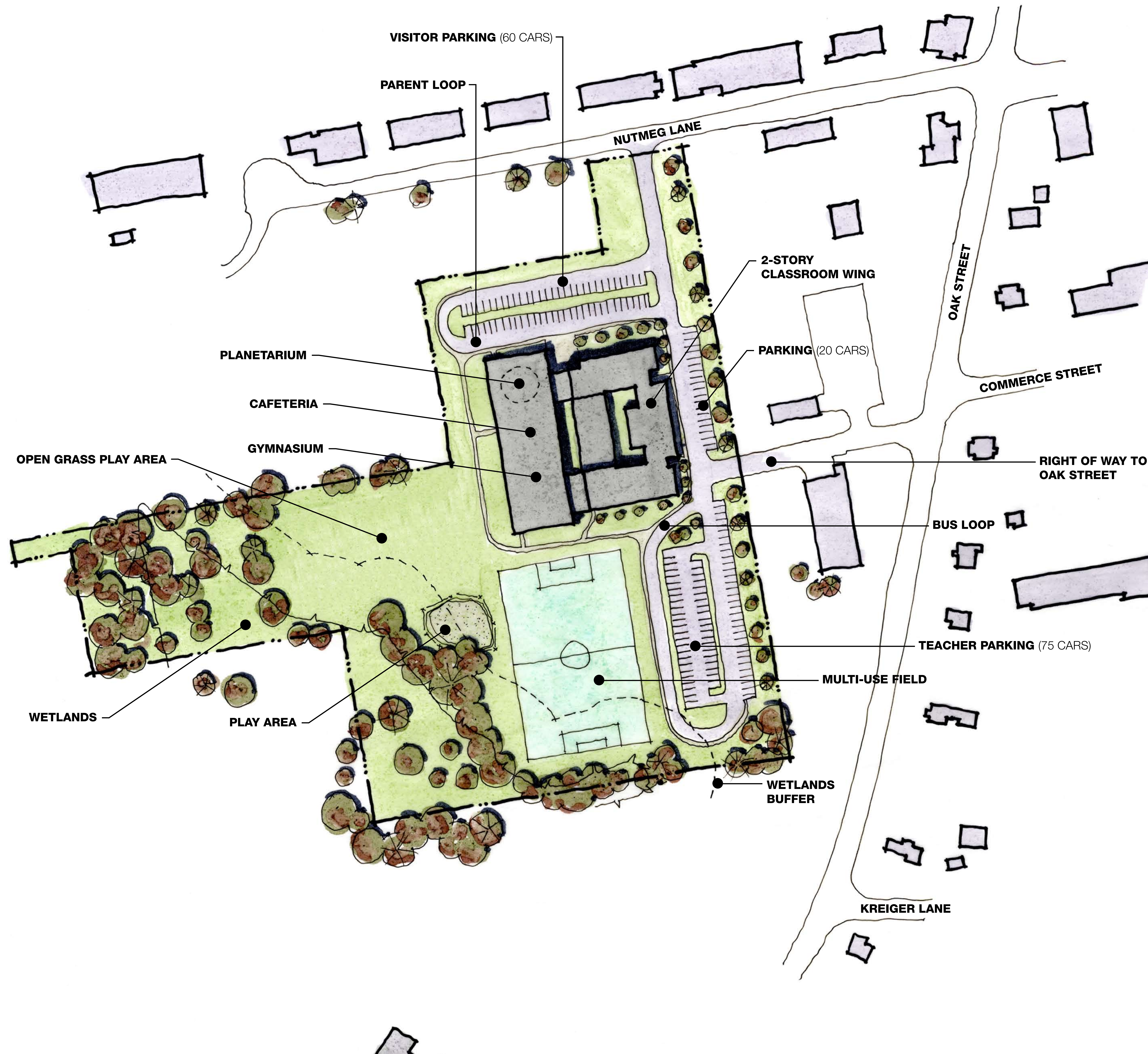


SITE 2



- SITE INFORMATION**
- APPROXIMATELY 13.75 ACRES
 - BUILDING PROGRAM ± 67,000 SF
 - 420 STUDENTS
 - BUILDING FOOTPRINT ± 55,000 SF
 - ON-SITE PARKING FOR 155 CARS
 - ZONED - PLANNED COMMERCE (PC)
 - SEPARATE BUS LOOP
 - SEPARATE PARENT LOOP
 - RE-USING ± 27,000 SF OF EXISTING BASEMENT SPACE BELOW PLANETARIUM, CAFETERIA AND GYMNASIUM
 - NEW MULTI-USE FIELD

