

**DRAWING LIST**

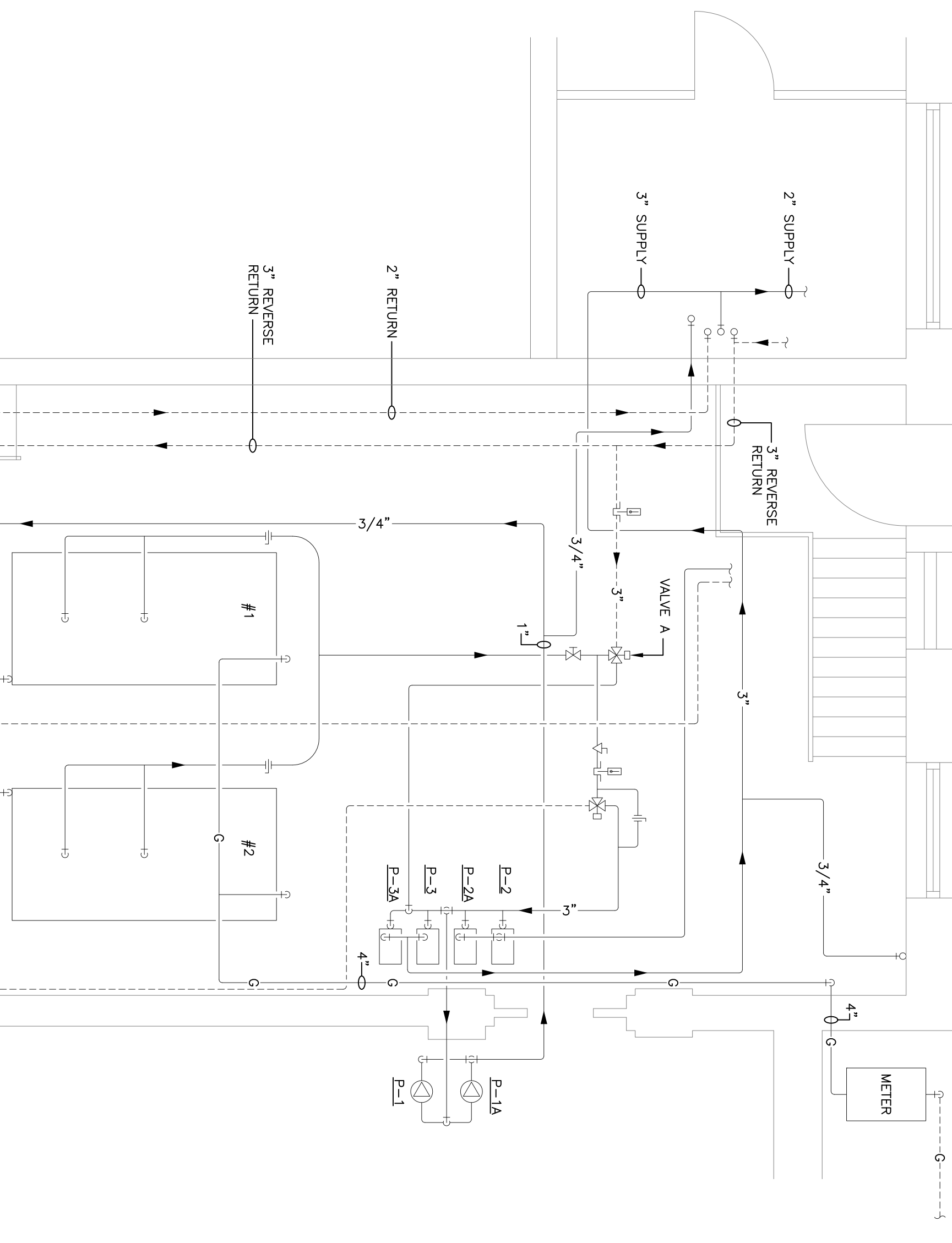
- ME-1 GENERAL INFORMATION
- ME-2 CONTROLS UPGRADE SCHEMATICS
- ME-3 MISCELLANEOUS SYSTEM MODIFICATIONS
- ME-4 DETAILS

**SPECIFICATIONS LIST**

| SECTION NO. | TITLE                                    |
|-------------|--|
| 15010       | GENERAL CONDITIONS FOR MECHANICAL TRADES |
| 15050       | BASIC MATERIALS AND METHODS              |
| 15900       | ENERGY MANAGEMENT AND CONTROLS SYSTEM    |
| 16010       | GENERAL CONDITIONS FOR ELECTRICAL TRADES |
| 16090       | BASIC MATERIALS AND METHODS              |
| 16483       | VARIABLE FREQUENCY DRIVES                |
| 17100       | COMMISSIONING                            |

**APPLICABLE CODES**

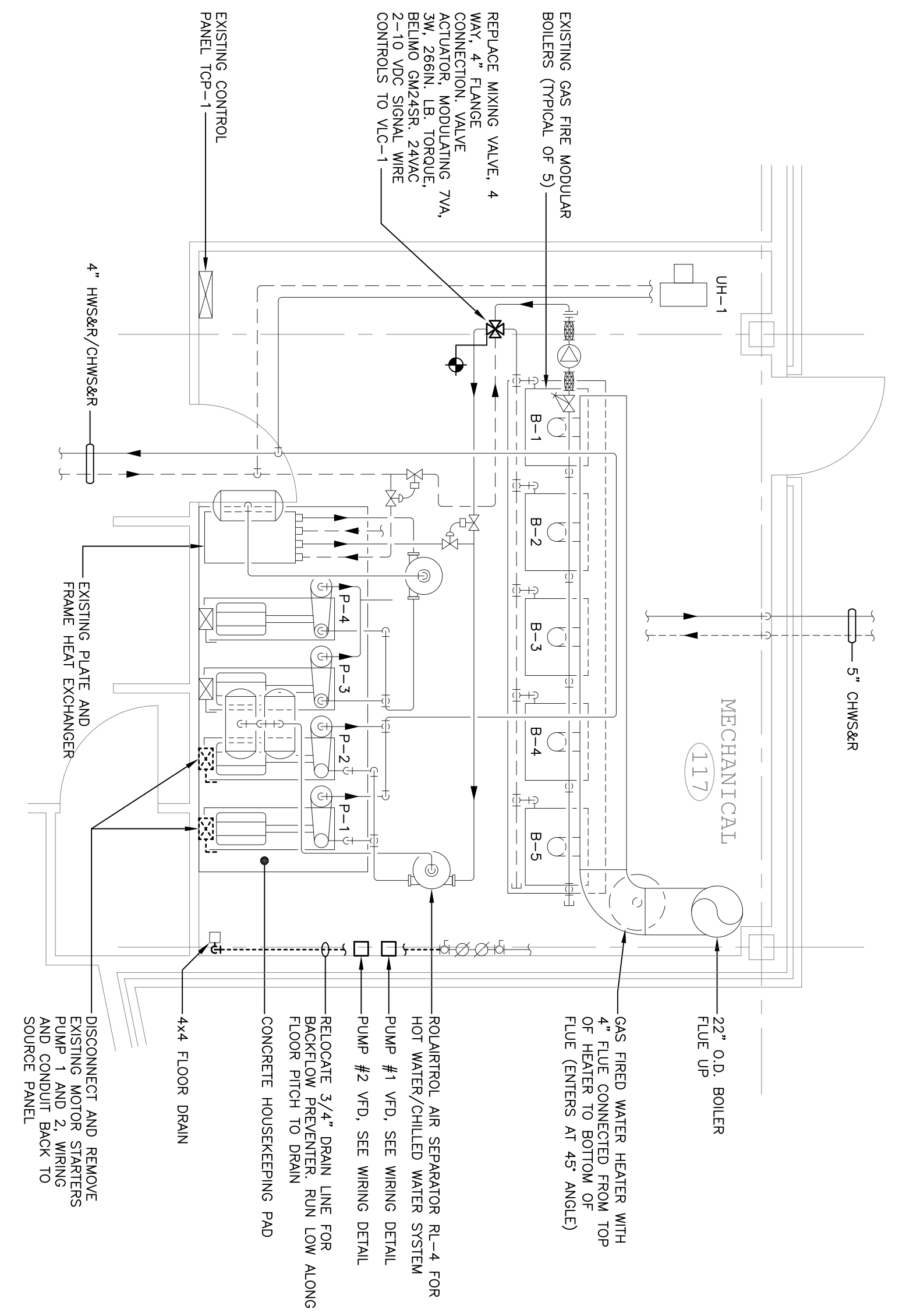
Connecticut State Building Code - Connecticut Supplement 2000  
 The BOCA National Building Code 1998 - 2009  
 International Mechanical Code 1998  
 The BOCA Accumulator Supplement 1999  
 The BOCA National Building Code 1998  
 The National Fire Protection Association - Life Safety Code 101-1997  
 NFPA-80A & NFPA-80B and NFPA-99 - Connecticut Supplement 2005  
 Connecticut State Building Code 2005 (NCPM '05)  
 And all applicable Local Building codes.



**TOWN HALL BOILER ROOM PART PLAN**  
 1/4" = 1'-0"

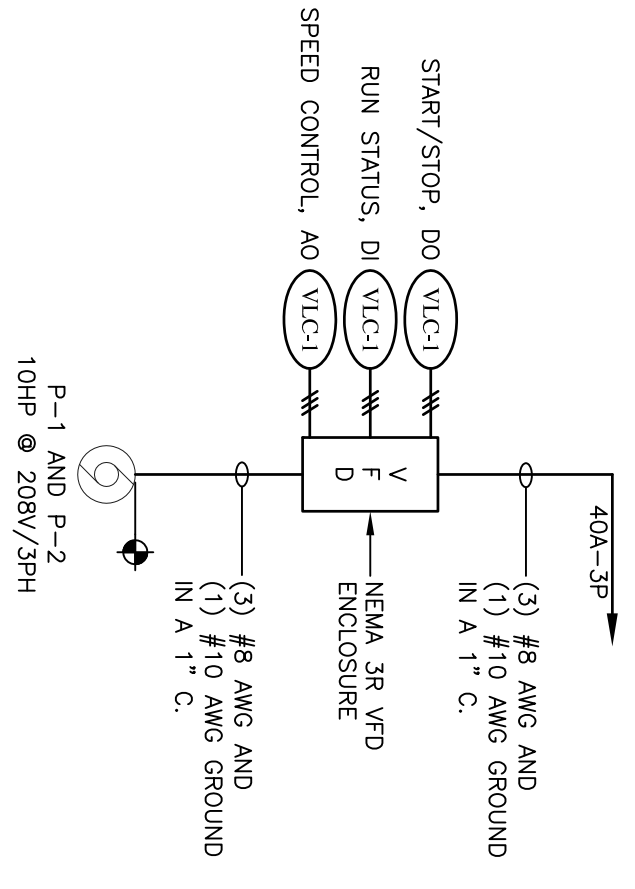
**PART PLAN NOTES:**  
 1. MODIFY HOT WATER RESET SCHEDULE FOR LOOP SERVED BY P-3 & TANK RESET TO BE BASED ON SPACE HEATING LOAD AS WELL AS O/A TEMPERATURE. SEE SHEET ME-2 FOR ADDITIONAL NOTES.  
 2. SEQUENCE OF OPERATION COORDINATE WITH OWNER.

**EXISTING WELLES TURNER LIBRARY MECHANICAL ROOM PART PLAN**  
 1/4" = 1'-0"



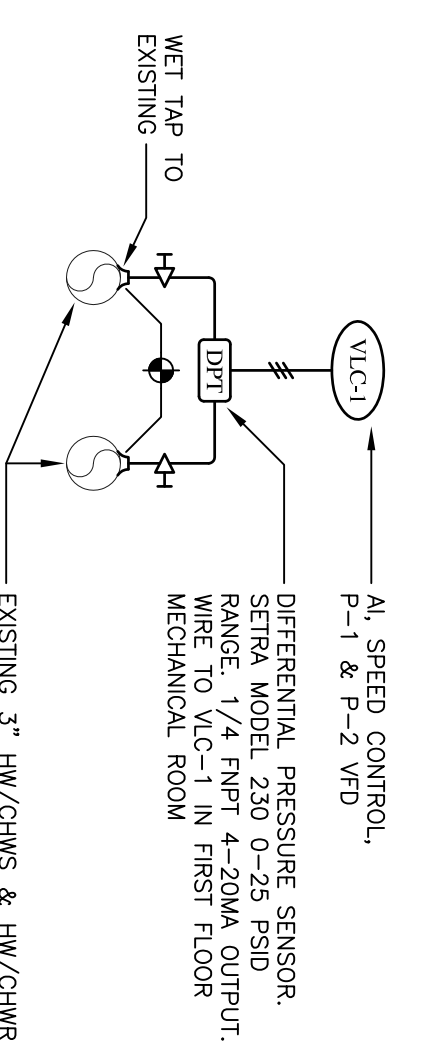
**PART PLAN NOTES:**  
 1. RECOMMISSION BOILER LOOP AND MAIN LOOP SEQUENCE OF OPERATION PER ORIGINAL DESIGN. (SEE SPECIFICATIONS.)  
 2. INSTALL NEW WIRING WAYS, VFD'S AS INDICATED INCLUDING ALL ANCHORS, HANGERS, BRACKETS, WIRING, ETC.  
 3. VFD TO MAINTAIN STATIC PRESSURE DIFFERENTIAL BASED ON EQUIPMENT ROOM FOR INSTALLATION. SEE SHEET FLOOR  
 4. INSTALLING CONTRACTOR TO VERIFY VFC-1 WILL SUPPORT ADDITIONAL INPUTS AND OUTPUTS. REPLACE AS REQUIRED.  
 5. INSTALL ALL DEVICES PER MANUFACTURERS INSTRUCTIONS.

**TYPICAL WIRING DETAIL FOR PUMPS 1 & 2**  
**WELLES TURNER LIBRARY**  
 NOT TO SCALE



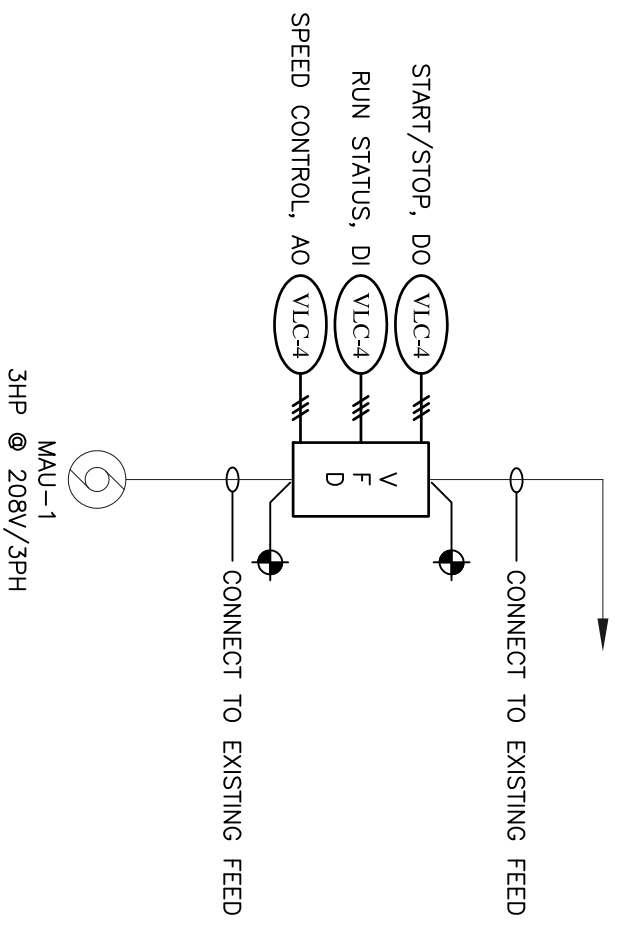
**DETAIL NOTES:**  
 1. CONTROL WIRING BACK TO APPLICATION CONTROLLER VFC-1 IN TOP-1.  
 2. WIRING SHALL BE INSTALLED IN CONDUIT PER NEC & SYSTEMS.  
 3. REMOVE EXISTING DIFFERENTIAL PRESSURE SENSORS USED FOR PUMP FLOW STATUS.  
 4. COORDINATE SHUTDOWN OF PUMPS WITH OWNER.  
 5. START UP RESPONSIBILITY OF INSTALLING CONTRACTOR PROGRAMING, WIRING TO BEC, BY LOCAL ALERTION REPRESENTATIVE.

**DIFFERENTIAL PRESSURE TRANSMITTER**  
**PUMP P1, P2 SPEED CONTROLLER**  
 NOT TO SCALE

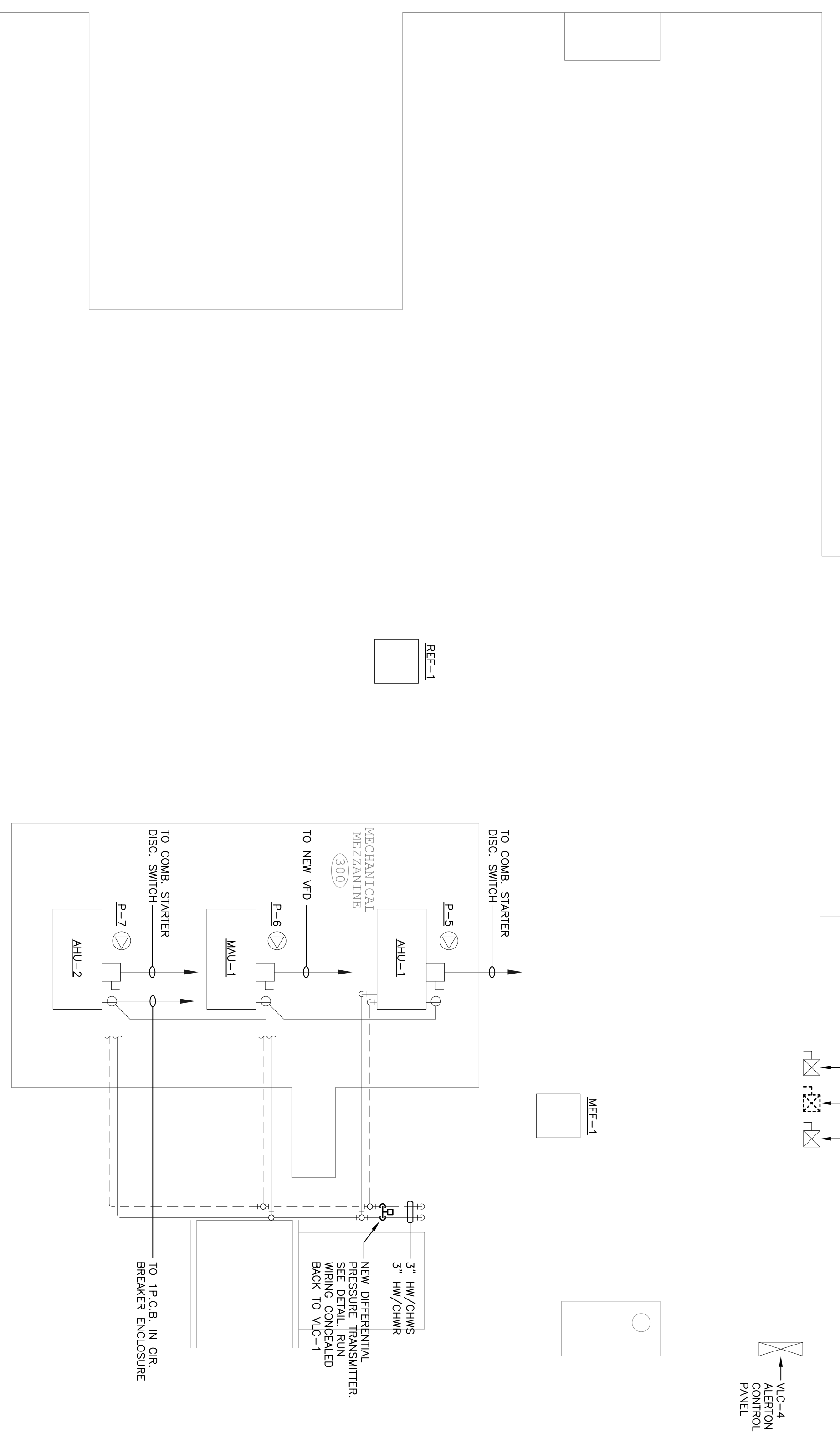


**DETAIL NOTES:**  
 1. COORDINATE LOCATION WITH OWNER.  
 2. PROGRAMING BY LOCAL ALERTION REPRESENTATIVE.

**MAU-1 VFD**  
 NOT TO SCALE



**WELLES TURNER LIBRARY - 3RD FLOOR EQUIPMENT ROOM PART PLAN**  
 1/8" = 1'-0"



**PART PLAN NOTES:**  
 1. INSTALLING CONTRACTOR TO VERIFY APPLICATION CONTROLLER WILL SUPPORT ADDED INPUTS/OUTPUTS. REPLACE AS REQUIRED.  
 2. SEE SHEET ME-2 FOR INSTALLATION OF CO2 SENSORS USED FOR CONTROLLING VFD SPEED.

GLASTONBURY MUNICIPAL BUILDING  
 BAS UPGRADE - GL-2010-06  
 300 WELLES ST. GLASTONBURY, CT

MISCELLANEOUS SYSTEM MODIFICATIONS

SCALE: AS NOTED  
 DATE: 05-30-2009  
 DRAWN: WPA  
 CHECKED: JD

**JP Engineering, Inc.**  
 41 Mechanic Street  
 Windsor, CT 06095  
 Tel: (860) 688-5223  
 Fax: (860) 688-5269  
 Consulting Engineering  
 JOB #08-60

| NO. | DATE | REVISIONS |
|-----|------|-----------|
|     |      |           |
|     |      |           |
|     |      |           |
|     |      |           |

**ME-3**