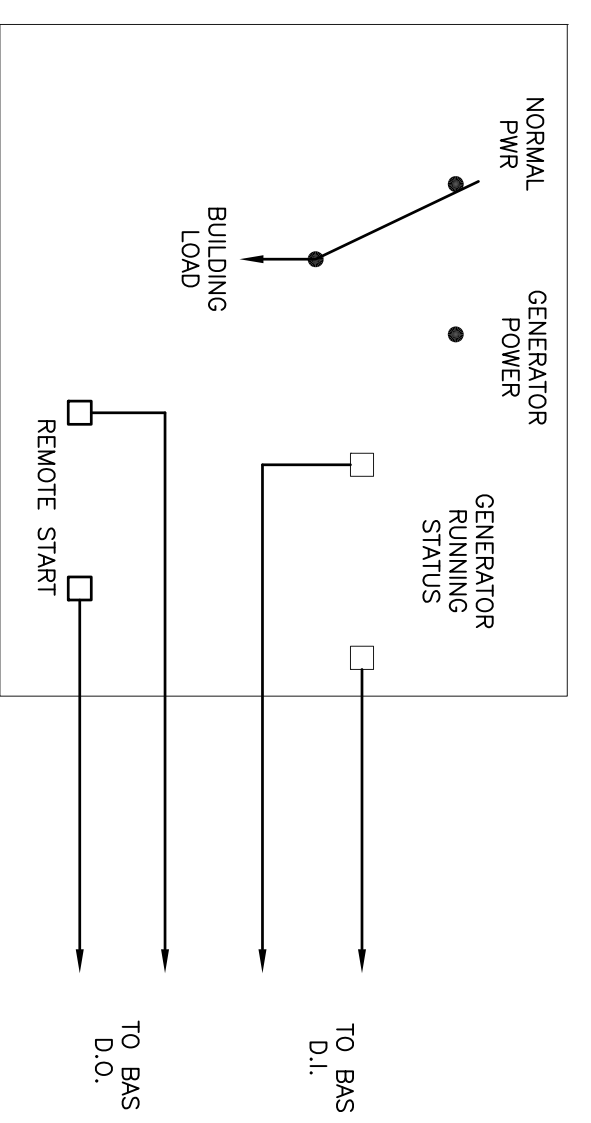
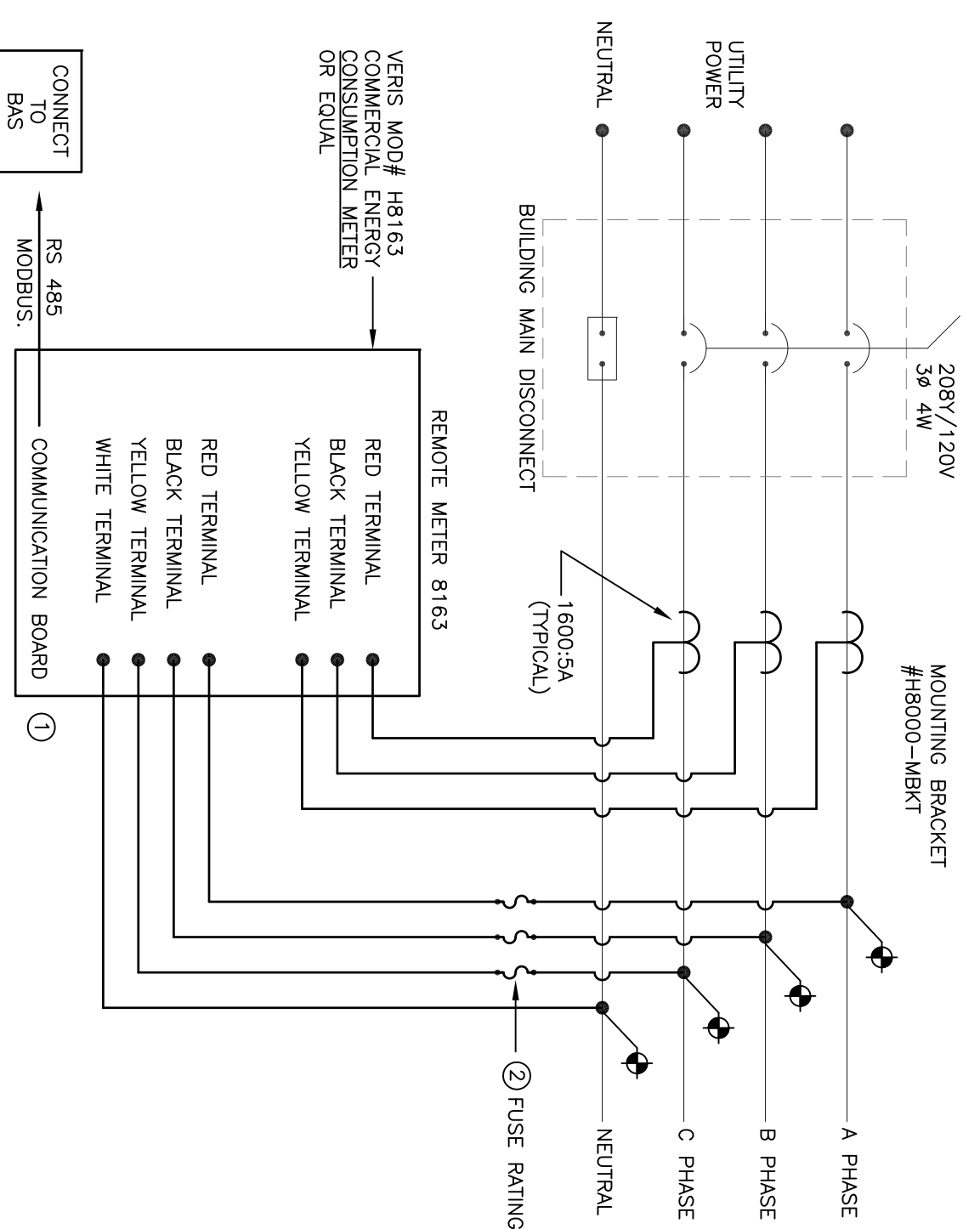


DETAIL, POLICE STATION KOHLER GENERATOR ATS
NOT TO SCALE



DETAIL, TOWN HALL CUMMINS/ONAN GENERATOR ATS
NOT TO SCALE

- GENERAL NOTES:
1. EC TO COORDINATE WITH GENERATOR MANUFACTURE TO TERMINATE THE CONDUCTORS FROM THE B.A.S. FOR THE REMOTE START FUNCTION. IF ADDITIONAL RELAY IS REQUIRED IT SHALL BE MOUNTED INSIDE THE ATS.
 2. EC TO COORDINATE WITH GENERATOR MANUFACTURE TO TERMINATE THE CONDUCTORS FOR THE B.A.S. GENERATOR RUM INDICATOR. IF ADDITIONAL RELAY IS REQUIRED IT SHALL BE MOUNTED INSIDE THE ATS.
 3. EC TO COORDINATE WITH OWNER AND BAS VENDOR AND GENERATOR VENDOR FOR FINAL OPERATIONAL TESTING.



POWER METERING
NOT TO SCALE
RIVER FRONT COMMUNITY CENTER
GLASTONBURY TOWN HALL
WELLES TURNER LIBRARY
POLICE STATION

- GENERAL NOTES:
1. FOLLOW MANUFACTURERS INSTALLATION INSTRUCTIONS.
 2. MOUNT METER IN A VISIBLE LOCATION AT THE ELEVATION OF THE METER.
 3. OWNER AND B.A.S. VENDOR TO COORDINATE SENSORS OR OPERATIONS NECESSARY TO REDUCE ELECTRICAL POWER DEMAND.

- REMARKS NOTES:
- ① EC TO RATHER AND INSTALL MOXBUS COMMUNICATION BOARD WITH BRAND AND MODEL TO BE DETERMINED.
 - ② EC TO FINISH AND INSTALL FUSE HOLDERS FOR (3) 1/2AMP SLO-SLO.
 - ③ EC TO FINISH AND INSTALL FUSE HOLDERS FOR (3) 1/2AMP SLO-SLO.

DRAWING LIST

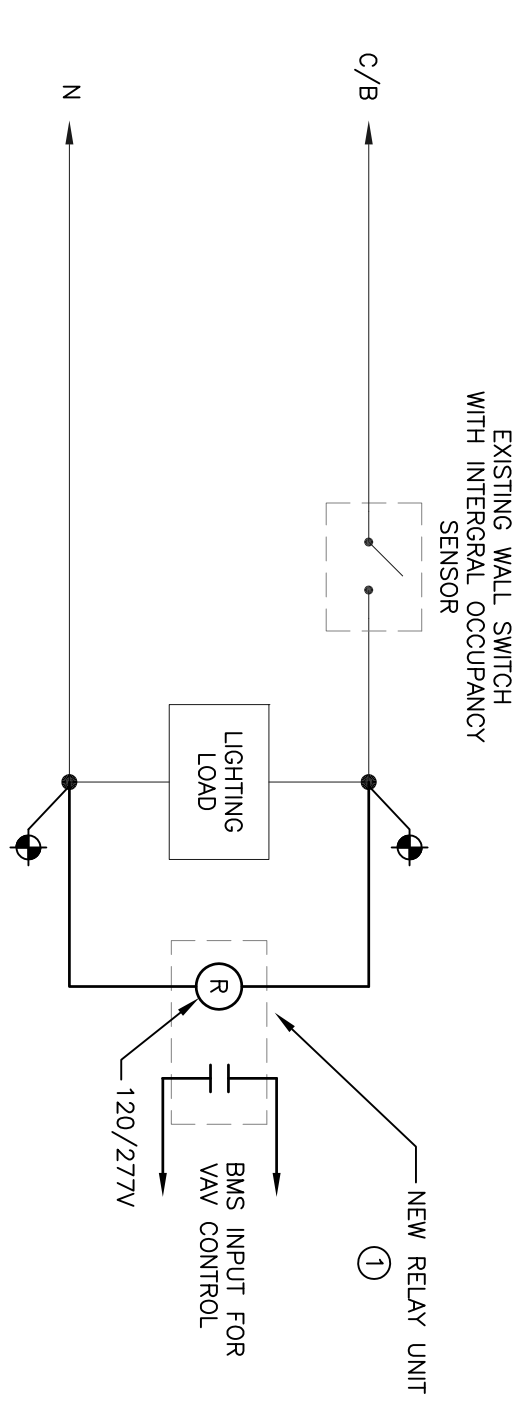
SECTION NO.	TITLE
ME-1	GENERAL INFORMATION
ME-2	CONTROLS UPGRADE SCHEMATICS
ME-3	MISCELLANEOUS SYSTEM MODIFICATIONS
ME-4	DETAILS

SPECIFICATIONS LIST

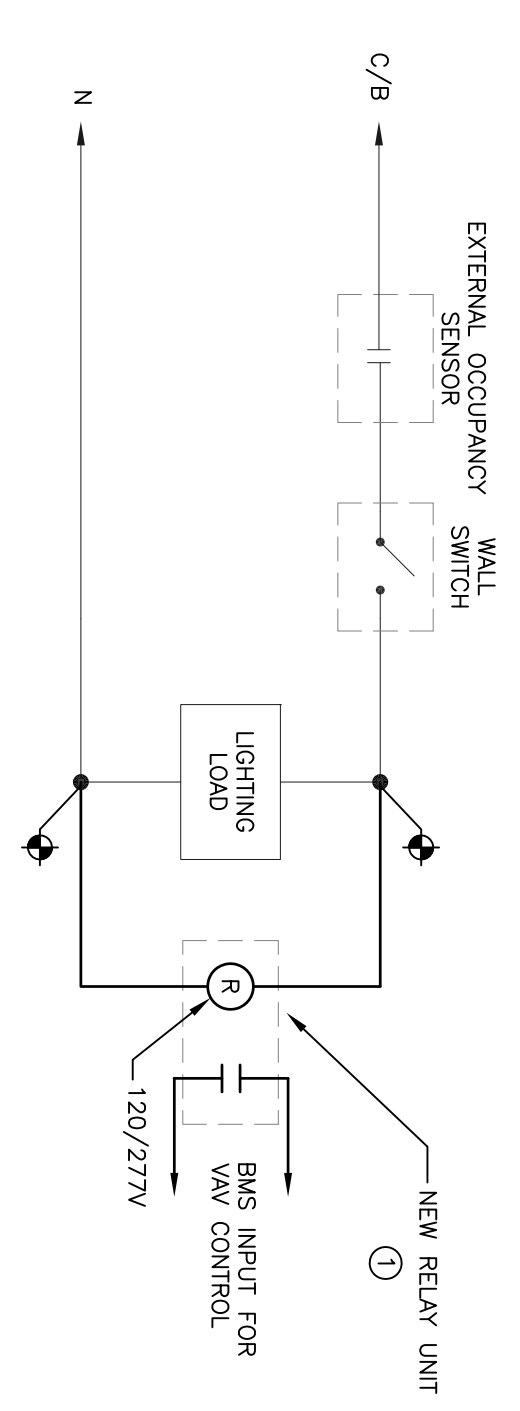
SECTION NO.	TITLE
15010	GENERAL CONDITIONS FOR MECHANICAL TRACES
15050	BASIC MATERIALS AND METHODS
15900	ENERGY MANAGEMENT AND CONTROLS SYSTEM
16010	GENERAL CONDITIONS FOR ELECTRICAL TRACES
16050	BASIC MATERIALS AND METHODS
16483	VARIABLE FREQUENCY DRIVES
17100	COMMISSIONING

APPLICABLE CODES

Connecticut State Building Code – Connecticut Supplement 2000
 The International Building Code 2000
 The International Mechanical Code 1996
 The International Electrical Code 2002
 The International Fire Code 2003
 The International Plumbing Code 1998
 The International Fuel Gas Code 2000
 The International Fire Protection Association – Life Safety Code 101-1997
 NFPA-90A & NFPA-90B and NFPA-99
 Connecticut State Building Code 2005 (Connecticut Supplement 2005)
 And all applicable Local Building codes.



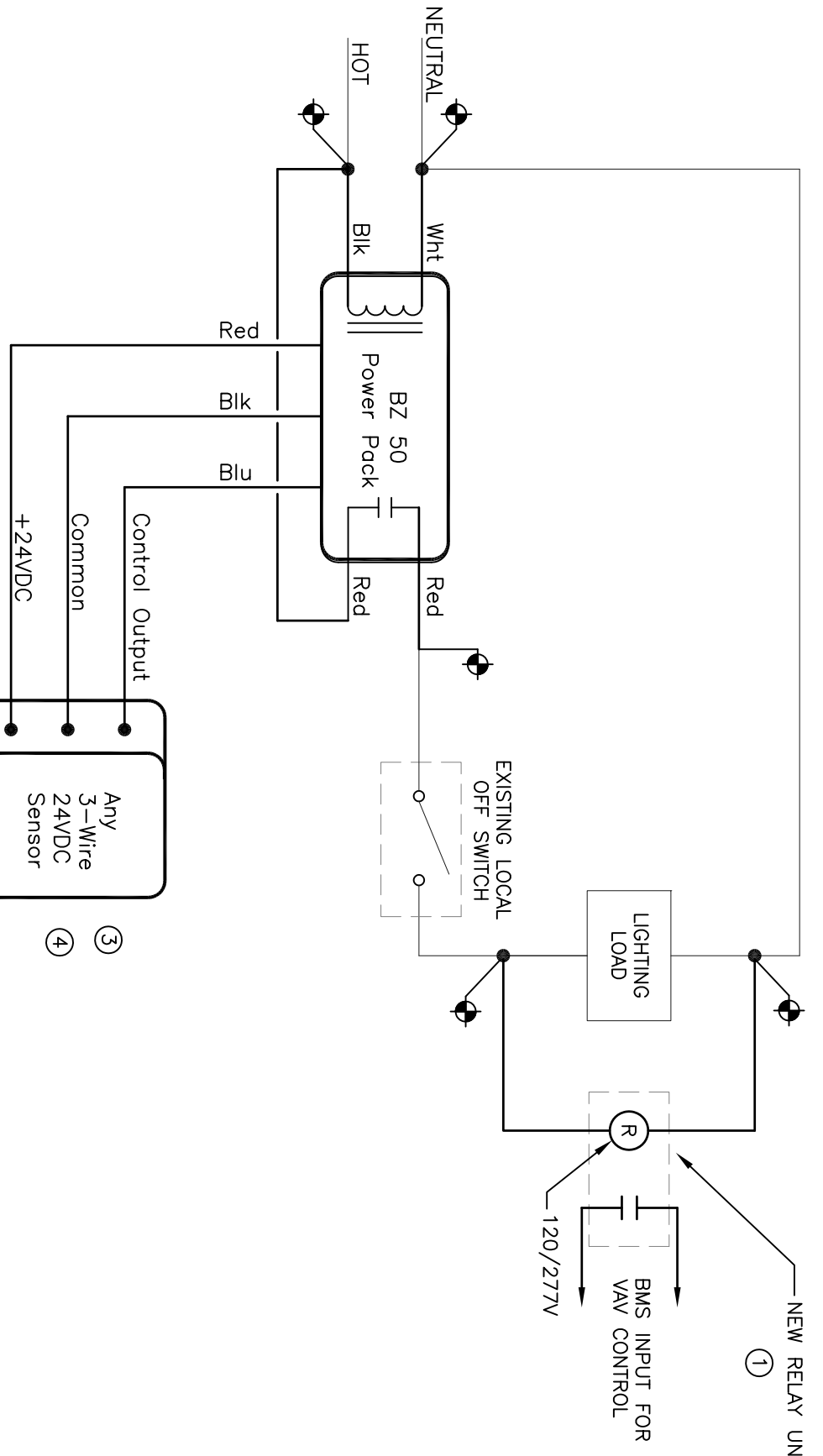
EXISTING OCC SENSOR, TYPICAL CONFIGURATION #1



EXISTING OCC SENSOR, TYPICAL CONFIGURATION #2

RIVERFRONT COMMUNITY CENTER

- ROOM NUMBERS: 102, 106, 108, 120, 121, 124, 126, 130, 134, 135, 144, 148, 151, 152
- TOWN HALL** ②
- ROOM NUMBERS: 102, 104, 105, 106, 107, 108, 109, 119, 124, 201, 203, 204, 205, 209, 210, 211, 212, 215, 216, 217, 218, 226, 227, 302, 305, 306, 307, 309, 310, 311, 312, 313, 315, 320, 322, 323, 326



NEW OCCUPANCY SENSOR INSTALLATION

RIVERFRONT COMMUNITY CENTER

- ROOMS #103 AND #142
- TOWN HALL** ③
- ROOM #213
- * EC TO INSTALL SLAVE RELAY ON OCCUPANCY SENSOR CONTROLS IF TWO LIGHTING CIRCUITS ARE FOUND. (TYPICAL)

LIGHTING CONTROL INTERFACE FOR VAV FUNCTION

NOT TO SCALE

- SEQUENCE OF OPERATIONS
1. IF ONE VAV BOX SERVES MORE THAN ONE ROOM THEN THE VAV BOX SHALL BE OCCUPIED BY THE STATUS / ROOM OCCUPIED TEMP SET POINT.
 2. IF MORE THAN ONE VAV BOX SERVES A COMMON ROOM THEN THE VAV BOX SHALL BE OCCUPIED BY THE STATUS / ROOM OCCUPIED TEMP SET POINT ON ALL VAV BOXES SERVING THAT ROOM.

- REMARKS NOTES:
- ① RIB MODEL #RB210DC UNIVERSAL VOLTAGE IRY CONTACT RELAYS.
 - ② EC TO INSTALL RIB RELAY IN EACH ROOM. RELAY, IRY CONTACT USED FOR THE BAS CONTROL OF VAV FUNCTION.
 - ③ EC TO INSTALL DT-300 OCCUPANCY SENSOR, POWER PACK AND RIB RELAY.
 - ④ EC TO INSTALL A CV100 OCCUPANCY SENSOR, POWER PACK AND RIB RELAY.

NO.	DATE	REVISIONS

JP Engineering, Inc.
 41 Mechanic Street
 Windsor, CT 06095
 Tel: (860) 688-5223
 Fax: (860) 688-5269
 Consulting Engineering
 JOB #08-60

GLASTONBURY MUNICIPAL BUILDING BAS UPGRADE - GL-2010-06 300 WELLES ST. GLASTONBURY, CT	SCALE: AS NOTED	DATE: 05-30-2009
DETAILS	DRAWN: CEM	CHECKED: JD

ME-4