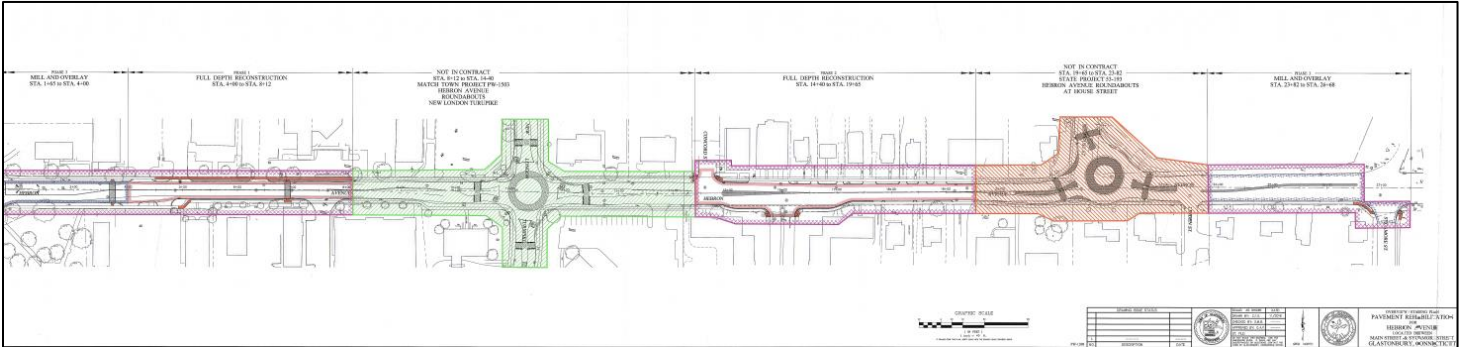


Roundabout Workgroup Meeting 1 – April, 18, 2018

Overview of Project Plans

Please note! Westbound traffic on Hebron Avenue (e.g. traveling from the Route 2 off-ramp towards Main St.) will **NOT** be detoured during any phases of this project. Maintaining this direction of traffic flow without detour has been identified as critical to continued Town Center business success during the construction period. All businesses within, and adjacent to, the construction zone will remain open and accessible to the public at all times.

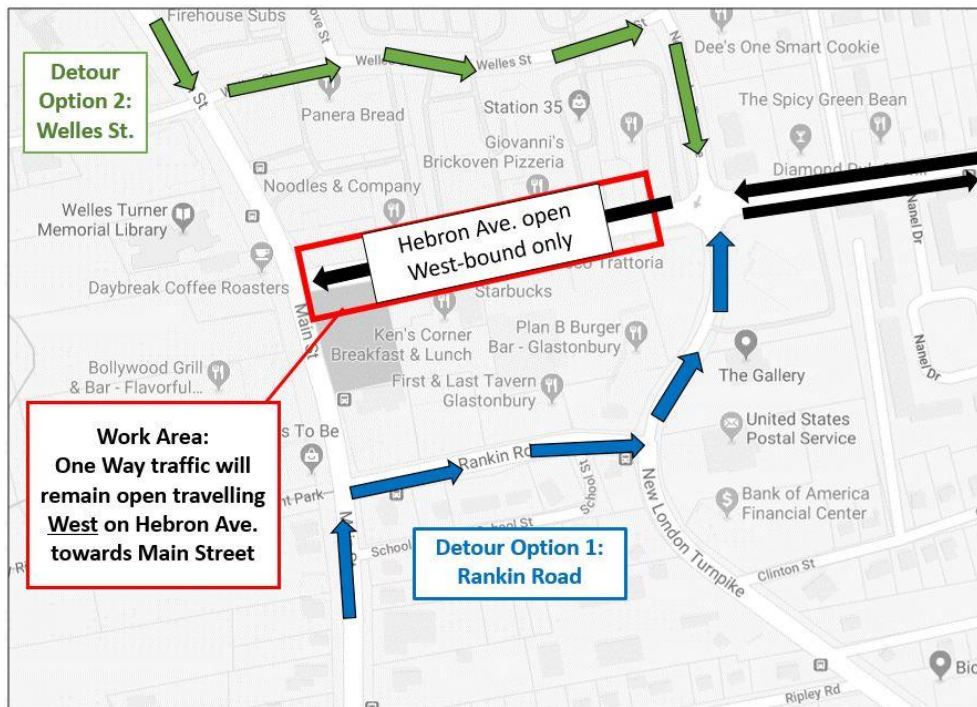


Phase 1: Pavement Rehabilitation

Start date: April 9th, 2018

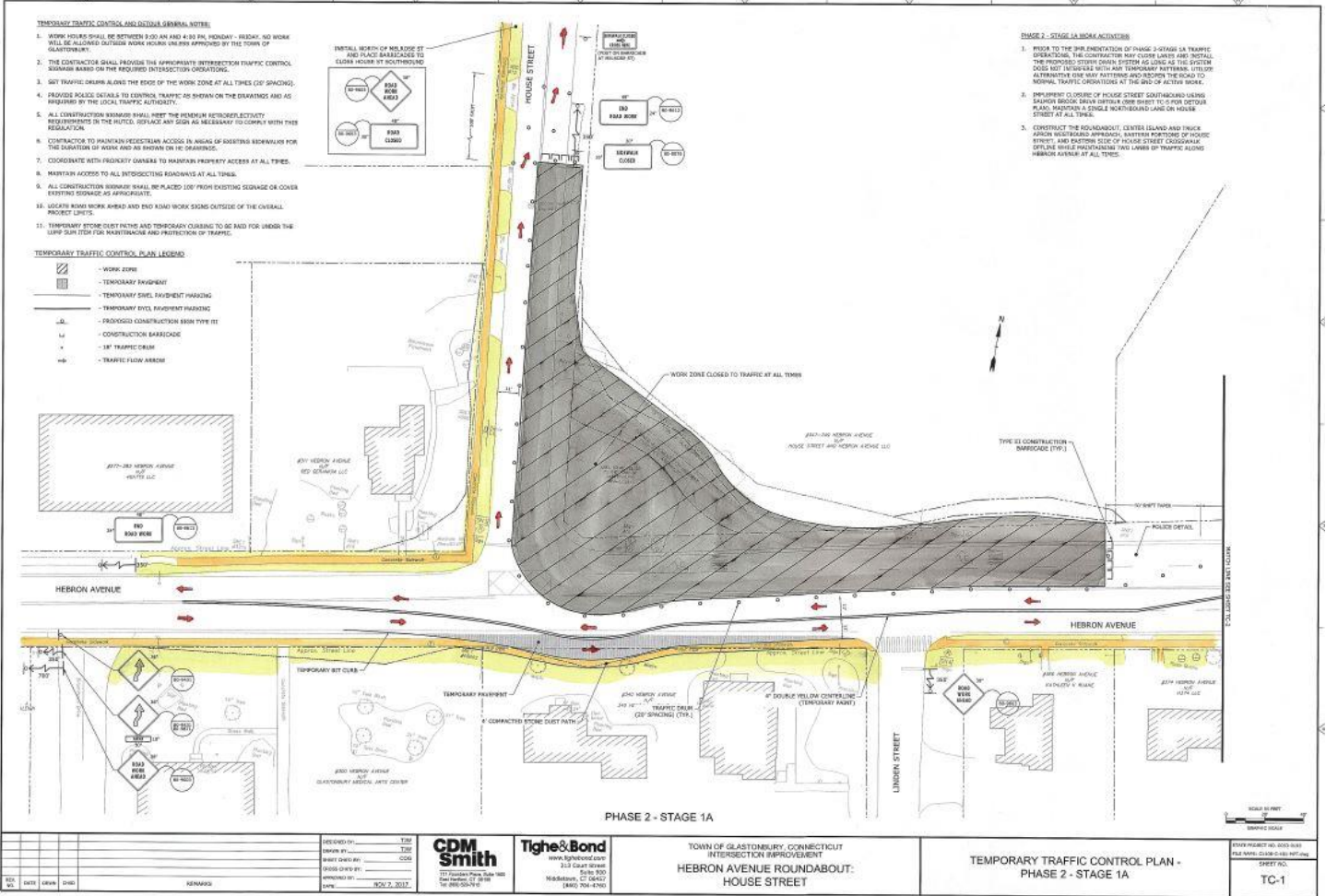
Estimated Project time: 7 weeks

In this phase, full depth pavement rehabilitation will take place, including the removal and replacement of all layers of pavement on Hebron Avenue between Main Street and the existing Hebron Avenues/New London Turnpike roundabout. As work is completed, Hebron Avenue will be CLOSED in the eastbound direction between Main Street and the westerly limit of the New London Turnpike roundabout. Traffic flow through the work zone will only be allowed in the westbound direction (see map below). Eastbound traffic will be detoured through Rankin Road and New London Turnpike, as well as Welles Street in order to proceed easterly on Hebron Avenue towards Route 2.



Phase 2 Stage 1A: House St/Hebron Ave Roundabout Construction

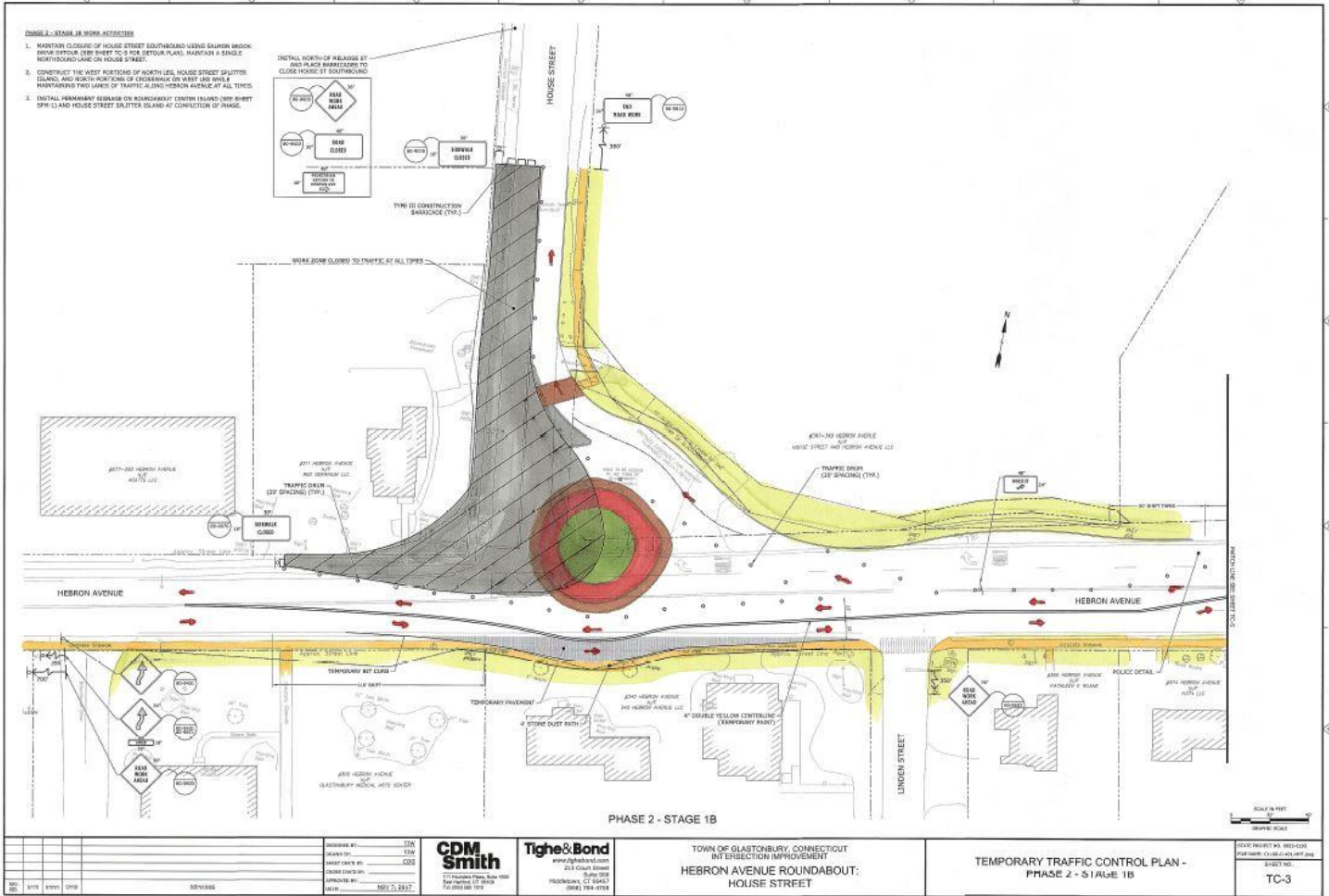
During this phase, House St. traffic will be restricted to a one way configuration in the northbound direction as contractors work on the northeast corner of the intersection. During this time, Hebron Avenue traffic will be allowed in both directions, and traffic will be able to turn onto House Street. LEFT turns from House Street onto Hebron Avenue will NOT be permitted due to the House St. southbound lane closure. Detours routing House St. southbound traffic will be in effect utilizing Salmon Brook Drive and New London Turnpike.



Continued on next page

Phase 2 Stage 1B: House St /Hebron Ave Roundabout Construction.

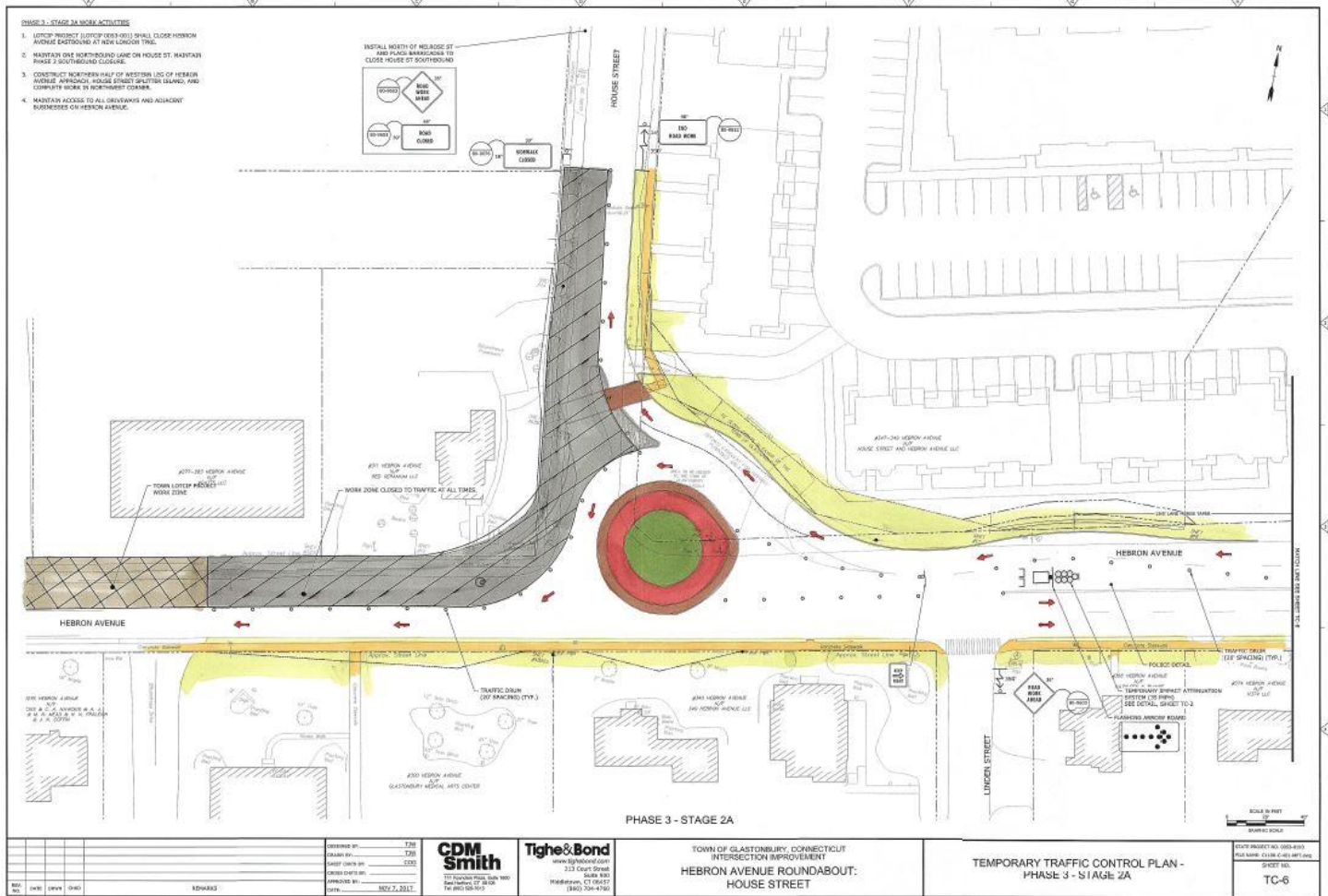
The southbound lane of House Street will remain closed to complete construction on the northwest corner of the intersection. Traffic will remain limited to Northbound only on House Street. (No traffic pattern change from the previous phase). Two way traffic will still be permissible on Hebron Avenue and LEFT turns from House Street onto Hebron Avenue will NOT be permitted due to the southbound lane closure. Detours routing House St. southbound traffic will be in effect utilizing Salmon Brook Drive and New London Turnpike.



Continued on next page

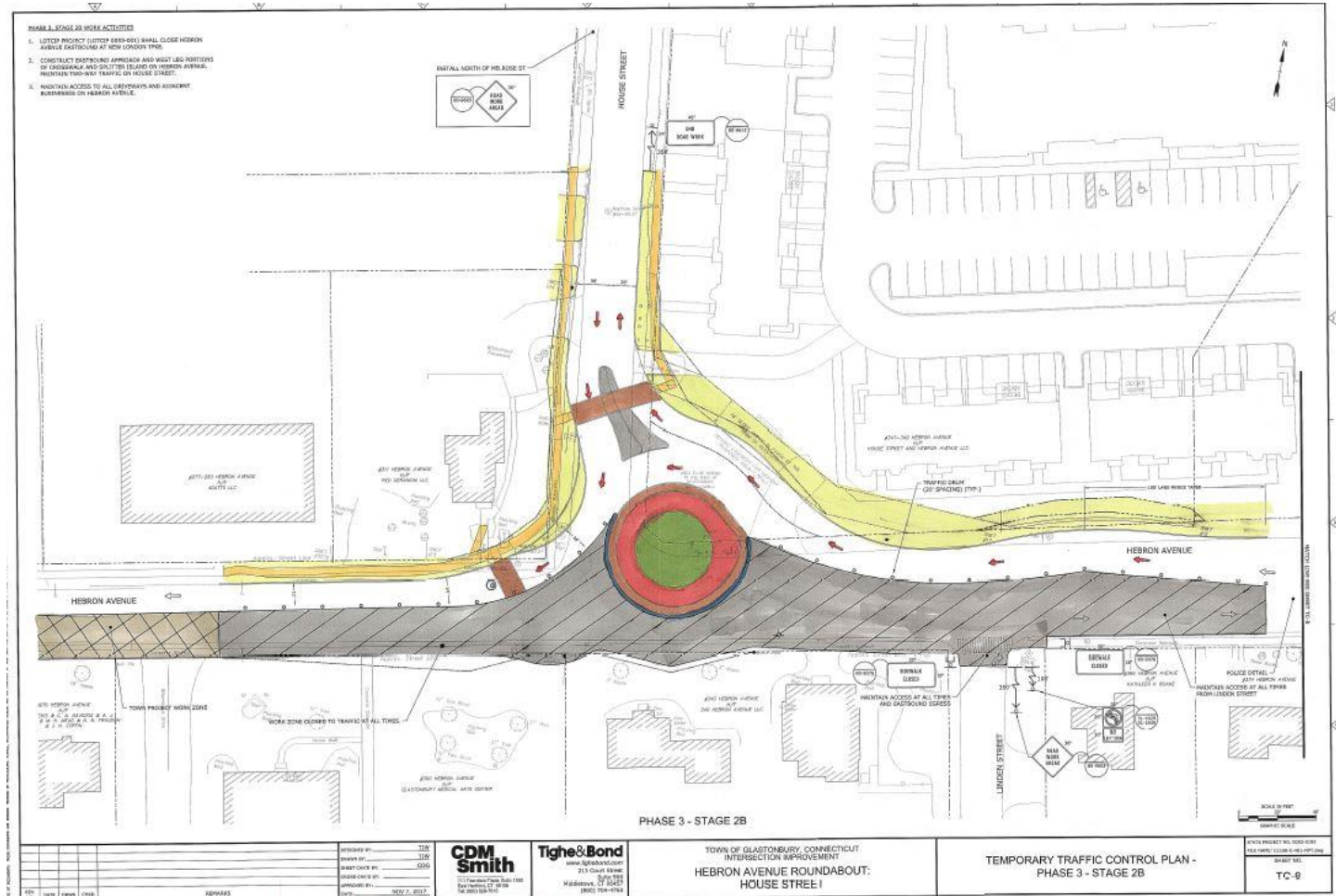
Phase 3 Stage 2A: House St/Hebron Ave Roundabout Construction and Hebron Ave Pavement Rehabilitation

This stage will feature continued work on the northwest corner of the House St. / Hebron Ave. intersection as well as pavement rehabilitation of the north side of Hebron Ave. between the House St. and New London Turnpike Roundabouts. The House St. / Hebron Ave. roundabout will be partially operational during this stage and House St. traffic will continue to be restricted to a one way configuration in the northbound direction. In addition, Hebron Avenue traffic through this work zone will be restricted to westbound only. Hebron Avenue eastbound traffic will be detoured utilizing New London Turnpike and Sycamore St.



Phase 3 Stage 2B: House St /Hebron Ave Roundabout Construction and Hebron Avenue Pavement Rehabilitation.

Work during this stage will consist of road construction on the south side of Hebron Avenue between the New London Turnpike Roundabout and a point east of Linden Street. House St. traffic will be allowed in both directions, however Hebron Avenue will again be restricted to westbound traffic only through the work zone. Hebron Avenue eastbound traffic will be detoured using New London Turnpike and Sycamore Street.



Phase 4: Hebron Avenue Milling and Paving

The final phase will consist of milling and paving between Linden Street and Sycamore Street, as well as top course paving throughout the entire corridor. This work will take place between the hours of 8:00 P.M. and 6:00 A.M. Required traffic patterns will vary by location.