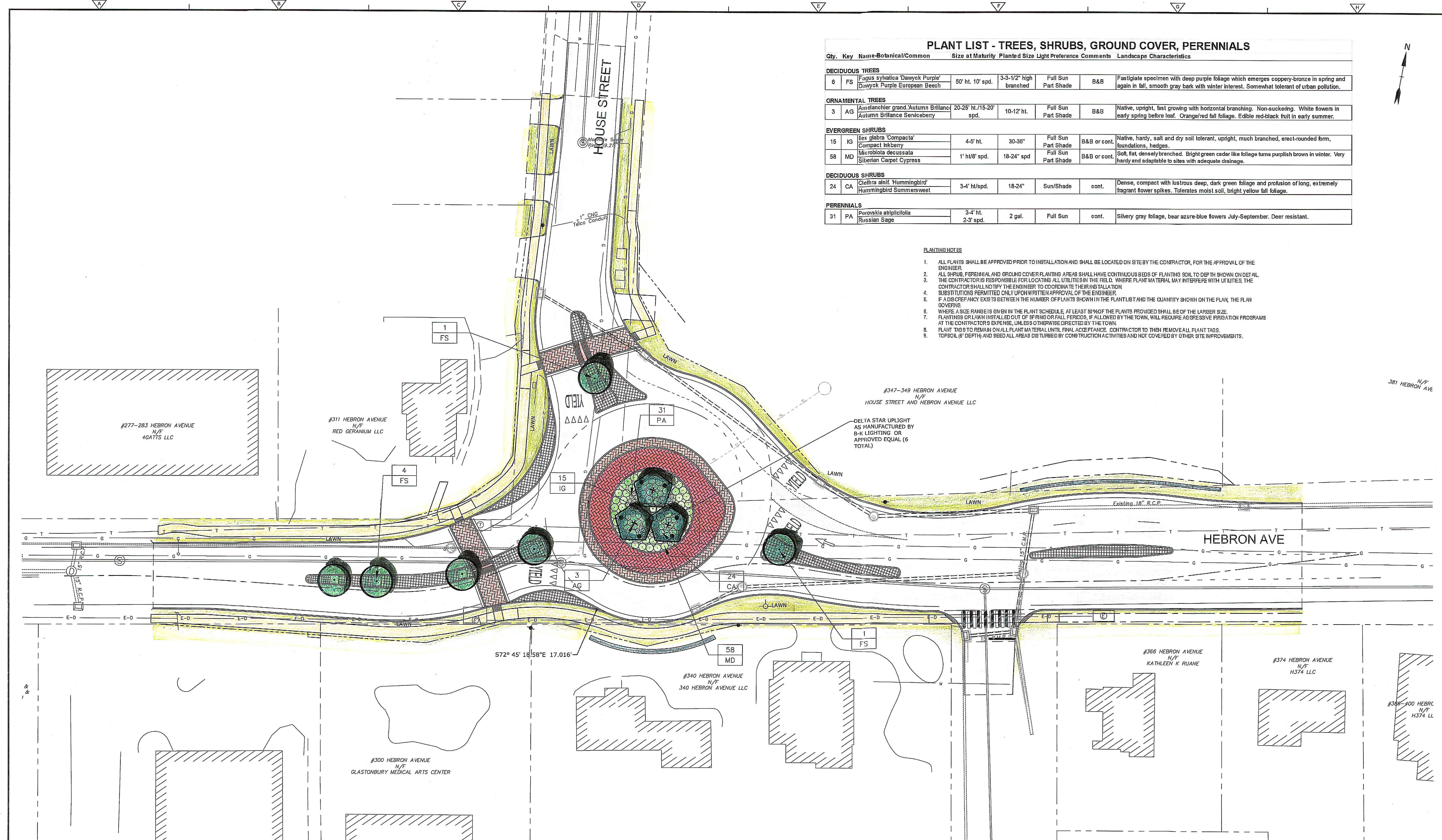


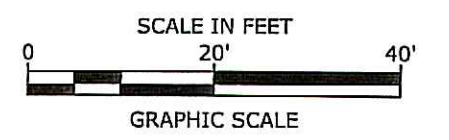
PLANT LIST - TREES, SHRUBS, GROUND COVER, PERENNIALS									
Qty.	Key	Name-Botanical/Common	Size at Maturity	Planted Size	Light Preference	Comments	Landscape Characteristics		
DECIDUOUS TREES									
6	FS	<i>Fagus sylvatica</i> 'Dawyc Purple' Dawyc Purple European Beech	60' ht. 10' spd.	3-3-1/2" high branched	Full Sun Part Shade	B&B	Fastigate specimen with deep purple foliage which emerges coppery-bronze in spring and again in fall, smooth gray bark with winter interest. Somewhat tolerant of urban pollution.		
ORNAMENTAL TREES									
3	AG	<i>Amelanchier grandiflora</i> Autumn Brilliance Autumn Brilliance Serviceberry	20-25' ht./15-20' spd.	10-12' ht.	Full Sun Part Shade	B&B	Native, upright, fast growing with horizontal branching. Non-suckering. White flowers in early spring before leaf. Orange/red fall foliage. Edible red-black fruit in early summer.		
EVERGREEN SHRUBS									
15	IG	<i>Ilex glabra</i> 'Compacta' Compact Inkberry	4-5' ht.	30-36"	Full Sun Part Shade	B&B or cont.	Native, hardy, salt and dry soil tolerant, upright, much branched, erect-rounded form, foundations, hedges.		
58	MD	<i>Microbiota decussata</i> Siberian Carpet Cypress	1' hu/8' spd.	18-24" spd	Full Sun Part Shade	B&B or cont.	Soft, flat, densely branched. Bright green cedar like foliage turns purplish brown in winter. Very hardy and adaptable to sites with adequate drainage.		
DECIDUOUS SHRUBS									
24	CA	<i>Clethra alnifolia</i> 'Hummingbird' Hummingbird Summersweet	3-4' ht/spd.	18-24"	Sun/Shade	cont.	Dense, compact with lustrous deep, dark green foliage and profusion of long, extremely fragrant flower spikes. Tolerates moist soil, bright yellow fall foliage.		
PERENNIALS									
31	PA	<i>Perovskia atriplicifolia</i> Russian Sage	3-4' ht. 2-3' spd.	2 gal.	Full Sun	cont.	Silvery gray foliage, bear azure-blue flowers July-September. Deer resistant.		

- PLANTING NOTES**
- ALL PLANTS SHALL BE APPROVED PRIOR TO INSTALLATION AND SHALL BE LOCATED ON SITE BY THE CONTRACTOR, FOR THE APPROVAL OF THE ENGINEER.
 - ALL SHRUB, PERENNIAL AND GROUND COVER PLANTING AREAS SHALL HAVE CONTINUOUS BEDS OF PLANTING SOIL TO DEPTH SHOWN ON DETAIL.
 - THE CONTRACTOR IS RESPONSIBLE FOR LOCATING ALL UTILITIES IN THE FIELD. WHERE PLANT MATERIAL MAY INTERFERE WITH UTILITIES, THE CONTRACTOR SHALL NOTIFY THE ENGINEER TO COORDINATE THEIR INSTALLATION.
 - SUBSTITUTIONS PERMITTED ONLY UPON WRITTEN APPROVAL OF THE ENGINEER.
 - IF A DISCREPANCY EXISTS BETWEEN THE NUMBER OF PLANTS SHOWN IN THE PLANT LIST AND THE QUANTITY SHOWN ON THE PLAN, THE PLAN GOVERNS.
 - WHERE A SIZE RANGE IS GIVEN IN THE PLANT SCHEDULE, AT LEAST 50% OF THE PLANTS PROVIDED SHALL BE OF THE LARGER SIZE.
 - PLANTINGS OR LAWN INSTALLED OUT OF SPRING OR FALL PERIODS, IF ALLOWED BY THE TOWN, WILL REQUIRE AGGRESSIVE IRRIGATION PROGRAMS AT THE CONTRACTOR'S EXPENSE, UNLESS OTHERWISE DIRECTED BY THE TOWN.
 - PLANT TAGS TO REMAIN ON ALL PLANT MATERIAL UNTIL FINAL ACCEPTANCE. CONTRACTOR TO THEN REMOVE ALL PLANT TAGS.
 - TOPSOIL, @ DEPTH AND BEED ALL AREAS DISTURBED BY CONSTRUCTION ACTIVITIES AND NOT COVERED BY OTHER SITE IMPROVEMENTS.



PLAN REFERENCES:

- EXISTING CONDITIONS TAKEN FROM A PLAN ENTITLED "PLAN DEPICTING EXISTING CONDITIONS FOR HEBRON AVENUE AND NEW LONDON TURNPIKE GLASTONBURY, CONNECTICUT 12-4-2015 SCALE: 1 IN = 20 FT" AS PREPARED BY TOWN OF GLASTONBURY ENGINEERING.
- PROPOSED ROUNDABOUT LAYOUT AND DESIGN PREPARED BY TIGHE AND BOND.



DESIGNED BY:	H. HAJNA
DRAWN BY:	S. WATTS
SHEET CHK'D BY:	H. HAJNA
CROSS CHK'D BY:	
APPROVED BY:	
DATE:	SEPTEMBER 29, 2017

CDM Smith
111 Founders Plaza, Suite 1800
East Hartford, CT 06108
Tel: (860) 529-7615

FREEMAN COMPANIES
36 John Street
Hartford, Ct 06106
800-604-5141

TOWN OF GLASTONBURY, CONNECTICUT
INTERSECTION IMPROVEMENT
HEBRON AVENUE ROUNDABOUT:
HOUSE STREET

LANDSCAPE PLAN

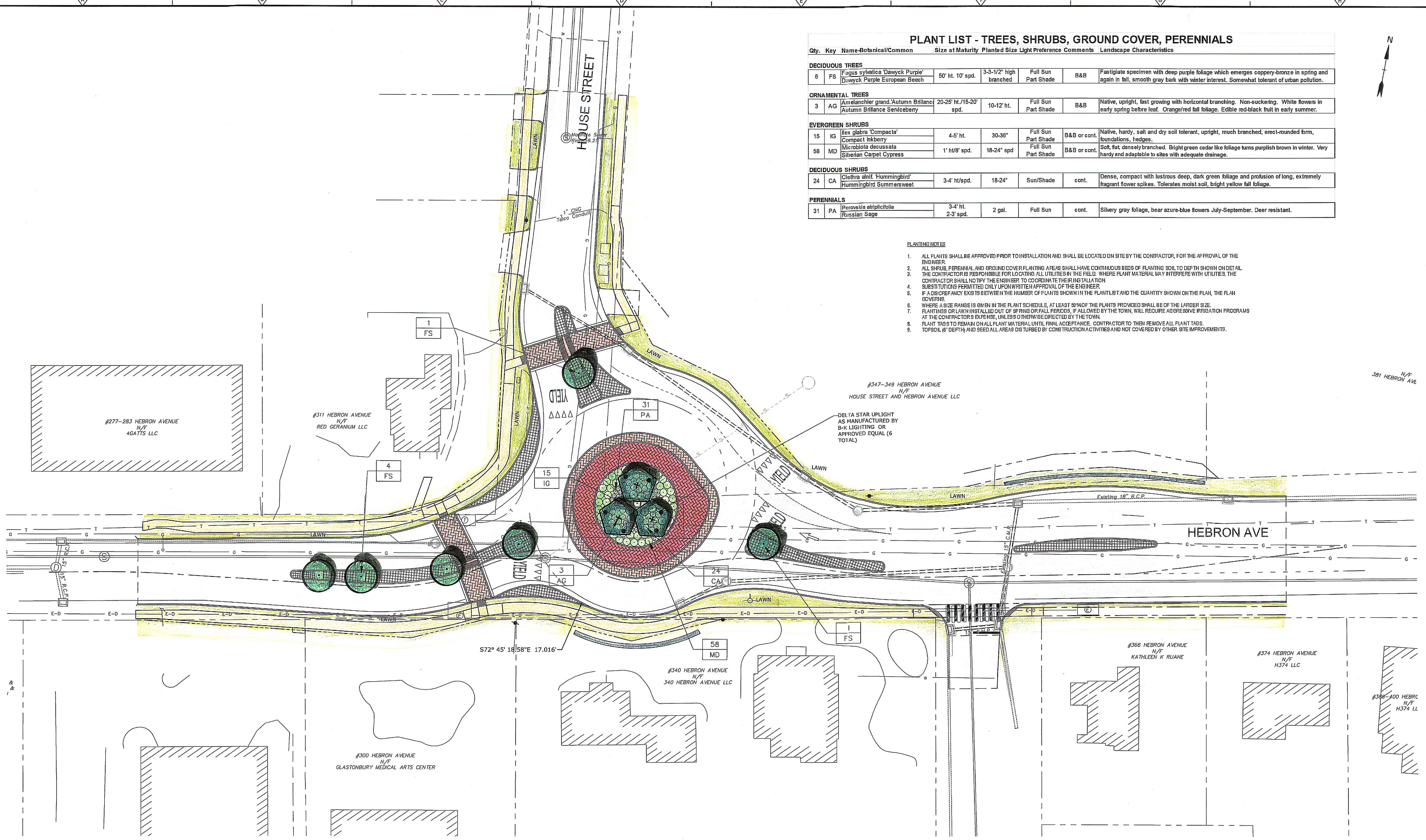
STATE PROJECT NO. 0053-0193
FILE NAME: 2015-1205 House St.dwg
SHEET NO.
LP-1

ALL RIGHTS RESERVED. THIS DOCUMENT AND DESIGN PROVIDED BY PROFESSIONAL SERVICE, INCORPORATED HEREIN, ARE THE PROPERTY OF CDM SMITH AND ARE NOT TO BE REPRODUCED, COPIED, OR TRANSMITTED IN ANY FORM OR BY ANY MEANS, ELECTRONIC OR MECHANICAL, WITHOUT THE WRITTEN AUTHORIZATION OF CDM SMITH.

PLANT LIST - TREES, SHRUBS, GROUND COVER, PERENNIALS

Qty.	Key	Name-Botanical/Common	Size at Maturity	Planted Size	Light Preference	Comments	Landscape Characteristics
DECIDUOUS TREES							
6	FS	Fagus sylvatica 'Dawyc Purple' Dawyc Purple European Beech	50' ht. 10' spd.	3-3-1/2" high branched	Full Sun Part Shade	B&B	Fastigate specimen with deep purple foliage which emerges coppery-bronze in spring and again in fall, smooth gray bark with winter interest.
ORNAMENTAL TREES							
3	AG	Amelanchier grandifolia 'Autumn Brilliance' Autumn Brilliance Serviceberry	20-25' ht./15-20' spd.	10-12' ht.	Full Sun Part Shade	B&B	Native, upright, fast growing with horizontal branching. Non-suckering. White flowers in early spring before leaf. Orange/red fall foliage. Edible red-black fruit in early summer.
EVERGREEN SHRUBS							
15	IG	Ilex glabra 'Compacta' Compact Inkberry	4-5' ht.	30-36"	Full Sun Part Shade	B&B or cont.	Native, hardy, salt and dry soil tolerant, upright, much branched, erect-rounded form, foundations, hedges.
58	MD	Microbiota decussata Siberian Carpet Cypress	1' h/8' spd.	18-24" spd	Full Sun Part Shade	B&B or cont.	Soft, flat, densely branched. Bright green cedar like foliage turns purplish brown in winter. Very hardy and adaptable to sites with adequate drainage.
DECIDUOUS SHRUBS							
24	CA	Clethra alnif. 'Hummingbird' Hummingbird Summersweet	3-4' ht/spd.	18-24"	Sun/Shade	cont.	Dense, compact with lustrous deep, dark green foliage and profusion of long, extremely fragrant flower spikes. Tolerates moist soil, bright yellow fall foliage.
PERENNIALS							
31	PA	Perovskia atriplicifolia Russian Sage	3-4' ht. 2-3' spd.	2 gal.	Full Sun	cont.	Silvery gray foliage, bear azure-blue flowers July-September. Deer resistant.

- PLANTING NOTES**
- ALL PLANTS SHALL BE APPROVED PRIOR TO INSTALLATION AND SHALL BE LOCATED ON SITE BY THE CONTRACTOR, FOR THE APPROVAL OF THE ENGINEER.
 - ALL SHRUB, PERENNIAL AND GROUND COVER PLANTINGS ARE TO HAVE CONTINUOUS BEDS OF PLANTING SOIL TO DEPTH SHOWN ON DETAIL.
 - THE CONTRACTOR IS RESPONSIBLE FOR LOCATING ALL UTILITIES IN THE FIELD. WHERE PLANT MATERIAL MAY INTERFERE WITH UTILITIES, THE CONTRACTOR SHALL NOTIFY THE ENGINEER TO COORDINATE THEIR INSTALLATION.
 - SUBSTITUTIONS PERMITTED ONLY UPON WRITTEN APPROVAL OF THE ENGINEER.
 - IF A DISCREPANCY EXISTS BETWEEN THE NUMBER OF PLANTS SHOWN IN THE PLANT LIST AND THE QUANTITY SHOWN ON THE PLAN, THE PLAN COVERS.
 - WHERE A SIZE RANGE IS GIVEN IN THE PLANT SCHEDULE, AT LEAST 50% OF THE PLANTS PROVIDED SHALL BE OF THE LARGER SIZE.
 - PLANTINGS OR LAWN INSTALLED OUT OF SPRING OR FALL PERIODS, IF ALLOWED BY THE TOWN, WILL REQUIRE AGGRESSIVE IRRIGATION PROGRAMS AT THE CONTRACTOR'S EXPENSE, UNLESS OTHERWISE DIRECTED BY THE TOWN.
 - PLANT TAGS TO REMAIN ON ALL PLANT MATERIAL UNTIL FINAL ACCEPTANCE. CONTRACTOR TO THEN REMOVE ALL PLANT TAGS.
 - TOPSOIL, 6" DEPTH AND SEED ALL AREAS DISTURBED BY CONSTRUCTION ACTIVITIES AND NOT COVERED BY OTHER SITE IMPROVEMENTS.



PLAN REFERENCES:

- EXISTING CONDITIONS TAKEN FROM A PLAN ENTITLED "PLAN DEPICTING EXISTING CONDITIONS FOR HEBRON AVENUE AND NEW LONDON TURNPIKE GLASTONBURY, CONNECTICUT 12-4-2015 SCALE: 1 IN = 20 FT" AS PREPARED BY TOWN OF GLASTONBURY ENGINEERING.
- PROPOSED ROUNDABOUT LAYOUT AND DESIGN PREPARED BY TIGHE AND BOND.

REV. NO.	DATE	DRWN	CHKD	REMARKS

DESIGNED BY: H. HAJNA
 S. WATTS
 SHEET CHK'D BY: H. HAJNA
 CROSS CHK'D BY: _____
 APPROVED BY: _____
 DATE: SEPTEMBER 29, 2017

CDM Smith
 111 Founders Plaza, Suite 1600
 East Hartford, CT 06108
 Tel: (860) 529-7615

FREEMAN COMPANIES
 36 John Street
 Hartford, Ct 06105
 800-604-5141

TOWN OF GLASTONBURY, CONNECTICUT
 INTERSECTION IMPROVEMENT
**HEBRON AVENUE ROUNDABOUT:
 HOUSE STREET**

LANDSCAPE PLAN

STATE PROJECT NO. 0053-0193
 FILE NAME: 2015-1205 House SL.dwg
 SHEET NO.
LP-1

CDM SMITH, ALL RIGHTS RESERVED. THESE DOCUMENTS AND DESIGN PRODUCTS ARE THE PROPERTY OF CDM SMITH AND ARE NOT TO BE REPRODUCED OR TRANSMITTED IN ANY FORM OR BY ANY MEANS, ELECTRONIC OR MECHANICAL, INCLUDING PHOTOCOPYING, RECORDING, OR BY ANY INFORMATION STORAGE AND RETRIEVAL SYSTEM, WITHOUT THE WRITTEN AUTHORIZATION OF CDM SMITH.