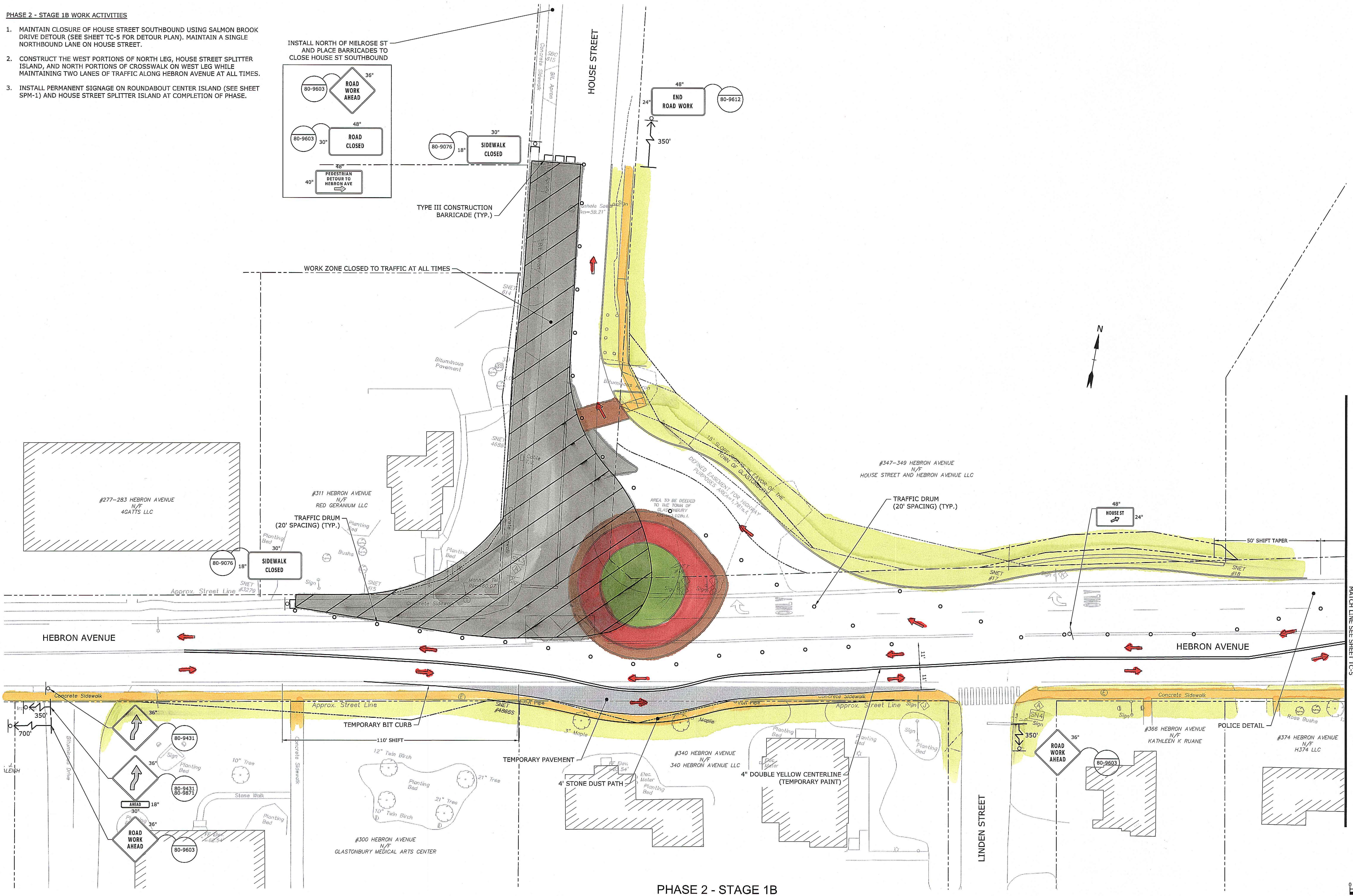
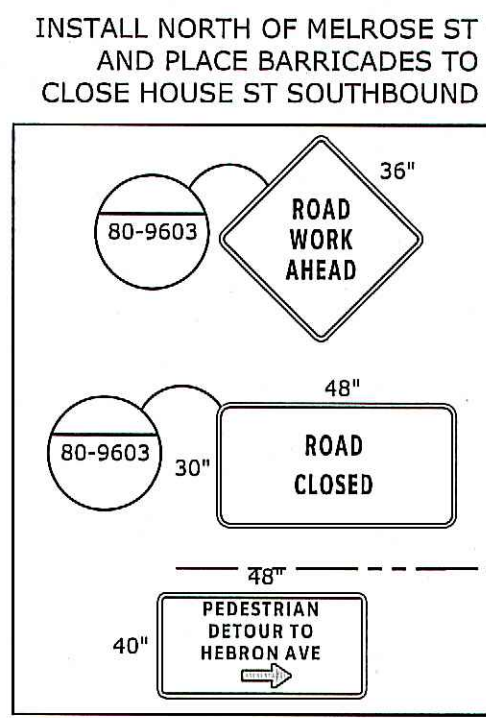


PHASE 2 - STAGE 1B WORK ACTIVITIES

1. MAINTAIN CLOSURE OF HOUSE STREET SOUTHBOUND USING SALMON BROOK DRIVE DETOUR (SEE SHEET TC-5 FOR DETOUR PLAN). MAINTAIN A SINGLE NORTHBOUND LANE ON HOUSE STREET.
2. CONSTRUCT THE WEST PORTIONS OF NORTH LEG, HOUSE STREET SPLITTER ISLAND, AND NORTH PORTIONS OF CROSSWALK ON WEST LEG WHILE MAINTAINING TWO LANES OF TRAFFIC ALONG HEBRON AVENUE AT ALL TIMES.
3. INSTALL PERMANENT SIGNAGE ON ROUNDABOUT CENTER ISLAND (SEE SHEET SPM-1) AND HOUSE STREET SPLITTER ISLAND AT COMPLETION OF PHASE.



PHASE 2 - STAGE 1B

REV. NO.	DATE	DRWN	CHKD	REMARKS

DESIGNED BY: TJW
 DRAWN BY: TJW
 SHEET CHK'D BY: COG
 CROSS CHK'D BY:
 APPROVED BY:
 DATE: NOV 7, 2017

CDM Smith
 111 Founders Plaza, Suite 1800
 East Hartford, CT 06108
 Tel: (860) 529-7815

Tighe & Bond
 www.tighebond.com
 213 Court Street, Suite 900
 Middletown, CT 06457
 (860) 704-4760

TOWN OF GLASTONBURY, CONNECTICUT
 INTERSECTION IMPROVEMENT
**HEBRON AVENUE ROUNDABOUT:
 HOUSE STREET**

**TEMPORARY TRAFFIC CONTROL PLAN -
 PHASE 2 - STAGE 1B**

STATE PROJECT NO. 0053-0193
 FILE NAME: C1108-C-401-MPT.dwg
 SHEET NO.
TC-3

CDM SMITH AND ITS AFFILIATES ARE PROVIDING THESE SERVICES TO THE TOWN OF GLASTONBURY, CONNECTICUT, UNDER A PROFESSIONAL SERVICES AGREEMENT. THESE SERVICES ARE BEING PROVIDED BY PROFESSIONAL PERSONNEL WHO ARE LICENSED IN THE STATE OF CONNECTICUT. THE TOWN OF GLASTONBURY, CONNECTICUT, IS THE CLIENT AND THE TOWN OF GLASTONBURY, CONNECTICUT, IS RESPONSIBLE FOR THE ACCURACY AND COMPLETENESS OF THE INFORMATION PROVIDED TO CDM SMITH. CDM SMITH AND ITS AFFILIATES ARE NOT PROVIDING ANY GUARANTEE OR WARRANTY OF ANY KIND, EXPRESS OR IMPLIED, FOR THE USE OF ANY OTHER PRODUCT WITHOUT THE WRITTEN AUTHORIZATION OF CDM SMITH.