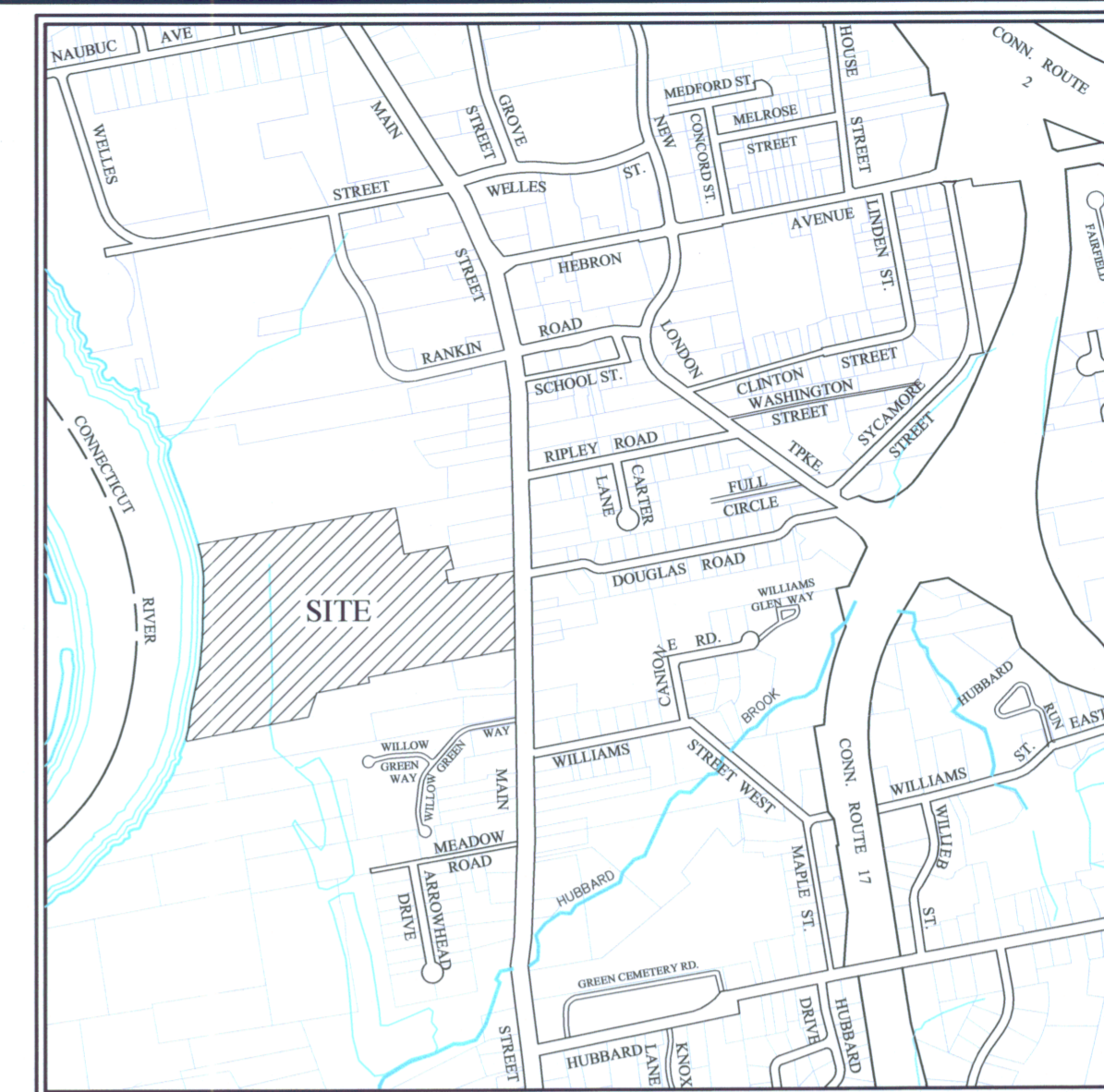


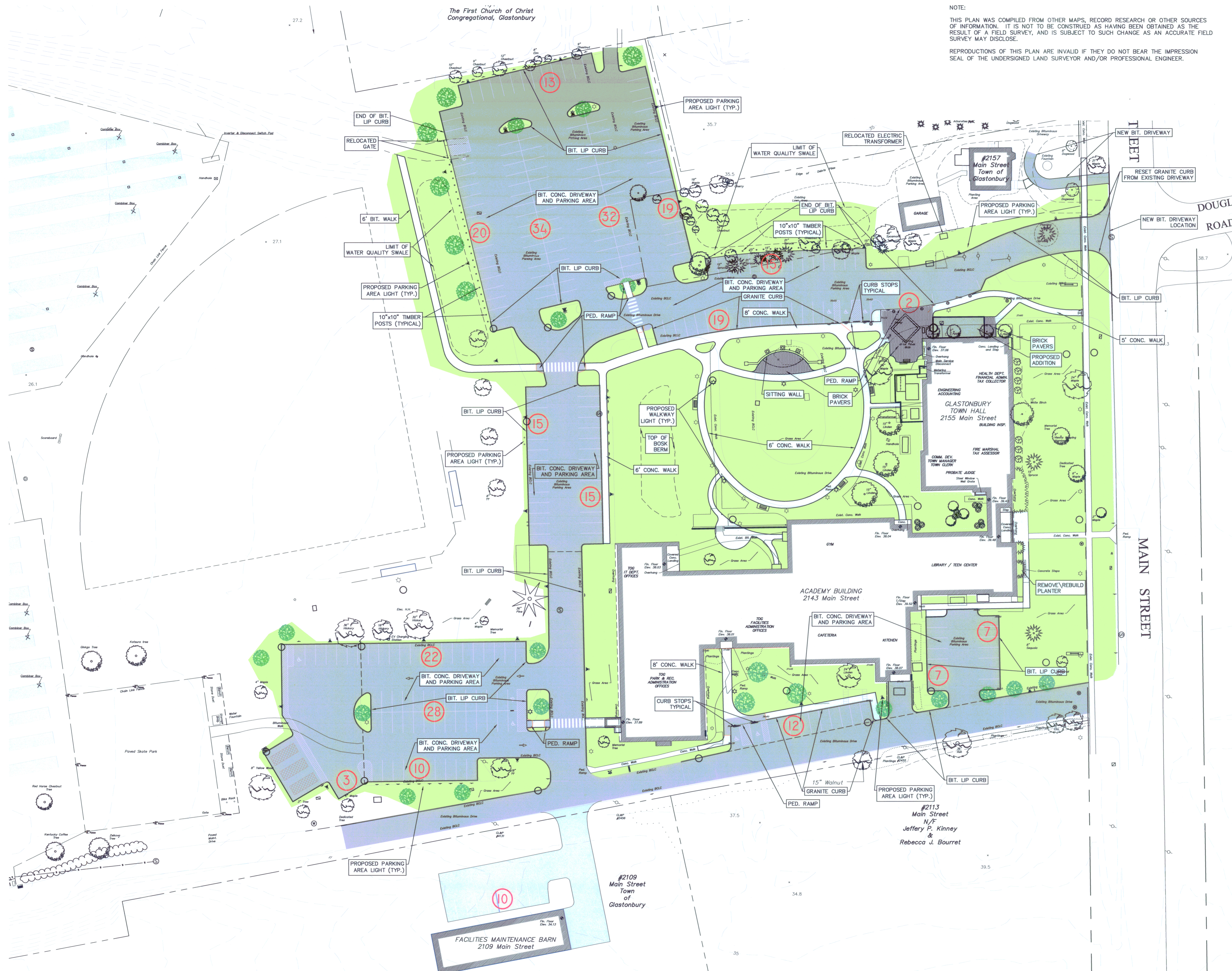
FILE: H:\DWG\Streets\Main St\VPW-0908 ACADEMY SCHOOL SITE IMPROVEMENTS\TownHall-Academy-12-2016.dwg USER: Charles Stamblyer DATE: 1/9/2017

The First Church of Christ
Congregational, Glastonbury

NOTE:
THIS PLAN WAS COMPILED FROM OTHER MAPS, RECORD RESEARCH OR OTHER SOURCES OF INFORMATION. IT IS NOT TO BE CONSTRUED AS HAVING BEEN OBTAINED AS THE RESULT OF A FIELD SURVEY, AND IS SUBJECT TO SUCH CHANGE AS AN ACCURATE FIELD SURVEY MAY DISCLOSE.
REPRODUCTIONS OF THIS PLAN ARE INVALID IF THEY DO NOT BEAR THE IMPRESSION SEAL OF THE UNDERSIGNED LAND SURVEYOR AND/OR PROFESSIONAL ENGINEER.



LOCATION MAP
SCALE: 1" = 1000'

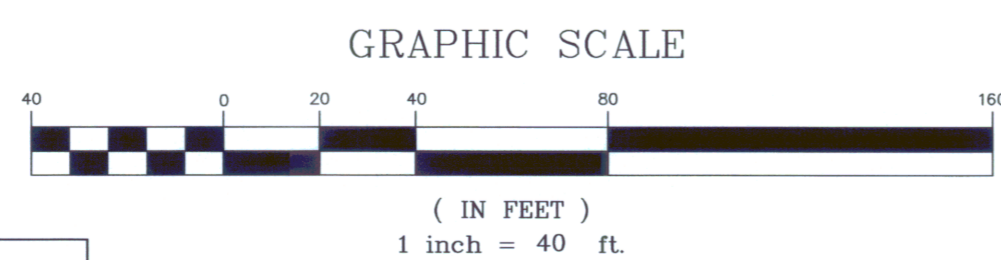


SURVEY NOTES:

1. LOCATION OF FEATURES AND CONTOUR DATA DEPICTED HEREON WHERE ACQUIRED THROUGH FIELD SURVEY CONDUCTED 5-2011.
2. THERE IS NO BOUNDARY/DETERMINATION OPINION.
3. NOT ALL IMPROVEMENTS ARE DEPICTED HEREON.
4. HORIZONTAL CONTROL IS BASED ON THE CONNECTICUT GEODETIC SURVEY STATE PLANE COORDINATES, NORTH AMERICAN DATUM OF 1983 - (NAD83).
5. ELEVATIONS AND VERTICAL CONTROL IS BASED ON THE NORTH AMERICAN VERTICAL DATUM 1988 - (NAV88).
6. REFERENCE FOR UTILITY INFO FROM THE FOLLOWING:
 - a. SITE PLAN LYONS AND MATHER ARCHITECTS BRIDGEPORT CONNECTICUT ACADEMY SCHOOL CONVERSION FOR JUNIOR HIGH SCHOOL DATE 1 JUNE 1960 JOB NO. 804
 - b. VARIOUS SITE, ELECTRICAL, MECHANICAL-HEATING & PLUMBING PLANS PROJECT 7202 ACADEMY SCHOOL RENOVATIONS 2141 MAIN STREET GLASTONBURY, CONNECTICUT DATE NOV 5 73 STECKER AND COLAVECCHIO ARCHITECTS, INC. 800 COTTAGE GROVE ROAD BLOOMFIELD, CONNECTICUT 06002 BEMIS FREEMAN SIPALA CONSULTING ENGINEERS

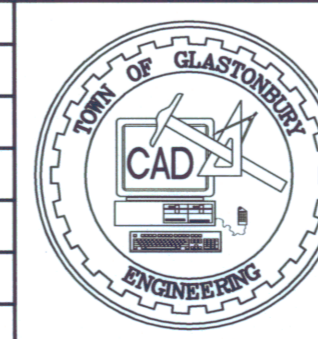
ALL UTILITY INFORMATION AND DATA SHOWN OR INDICATED IN THE CONTRACT DOCUMENTS ARE COMPILED FROM MAPS AND DATA FURNISHED BY OTHERS, ANY SUCH INFORMATION SHOULD NOT BE CONSTRUED AS ACCURATE OR COMPLETE AND THE CONTRACTOR SHALL VERIFY ALL LOCATIONS PRIOR TO CONSTRUCTION.

MANUAL REVISIONS TO THIS DOCUMENT ARE PROHIBITED.
ALL REVISIONS MUST BE PERFORMED ON CAD FILE.
H:\DWG\Streets\Main St\VPW-0908 ACADEMY SCHOOL SITE IMPROVEMENTS\TownHall-Academy-12-2016.dwg

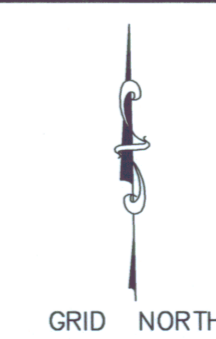


PW-0908

DRAWING ISSUE STATUS		
NO.	DESCRIPTION	DATE



SCALE: AS SHOWN	DATE: 5/5/2015
DRAWN BY: C.F.S.	CHECKED BY: S.M.B.
APPROVED BY: D.A.P.	ST. FILE:



PRELIMINARY
PLAN DEPICTING
**TOWN HALL / ACADEMY COMPLEX
DRIVE & PARKING RECONFIGURATION**
LOCATED AT
**2155 / 2143 MAIN STREET
GLASTONBURY, CONNECTICUT**

SHEET NO.
1
OF 1