

*The
Glastonbury
Story*



Annual Report
1996 ~ 1997

Town of Glastonbury

We pay tribute to Peter M. Stern who was such an able and valuable asset to the Town of Glastonbury in his 21 years on the Conservation Commission, 12 of them as Chairman. Peter Stern led our commission in so very many ways. He presided by the sheer magnitude of his presence, command of our mission, and reputation. He had great depth of understanding for all of the issues regarding development and environment. He drew upon his storehouse of information from his years of involvement with Glastonbury, incredibly recalling yesterday's details that would be significant in today's decisions. With his great intelligence and practical wisdom, he could conjure up creative approaches to dilemmas. Peter left us a great legacy on which to continue.



LOCATION

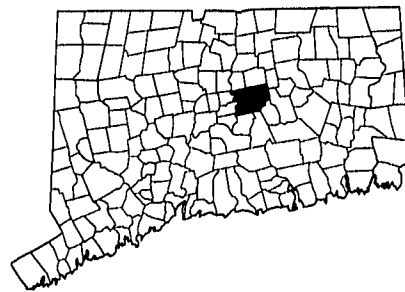
Glastonbury is located ten miles south-east of Hartford, southerly of Route 3 and easterly of the Connecticut River and Interstate 91. It is served by the Hartford County Regional Planning Agency and the Capitol Region Council of Governments.

AREA

52.5 square miles, 33,600 acres.

POPULATION

Approximately 29,000.



LAND USE

Principally residential (approximately 60% of land area) with suburban to rural densities, compact commercial/employment district (approximately 15%) and significant open space comprising of water company, State forest and Town lands (25%).

FORM OF GOVERNMENT

Town Council, Town Manager, Board of Finance.

TOWN HALL

2155 Main Street, Glastonbury, Connecticut, 06033, located one quarter mile south of Hebron Avenue on the west side of Main Street.

TAX RATE

29.6 mills July 1997.

NUMBER OF VOTING DISTRICTS

Eight.

NET GRAND LIST

On October 1, 1996, \$1,852,052,350.

STATE REPRESENTATIVES

Sonya Googins (R) 240-8700
Richard Veltri (R) 240-8700

STATE SENATOR

Mary Ann Handley (D) 240-8600

U.S. CONGRESSWOMAN

Barbara Kennelly, 278-8888

U.S. SENATORS

Joseph Lieberman, 240-3566
Christopher Dodd, 240-3470

1997-1998 GOVERNMENT

Town Manager: Richard J. Johnson,
Town Council: Kurt P. Cavanaugh,
Chairman; Sharon H. Purill, Vice
Chairman; Marti Curtiss, Judith A.
Stearns, Thomas F. Flanagan,
H. David Megaw, Walter J. Cusson,
Sheenu Srinivasan, and B. Kent Sleath.

Town of Glastonbury

Vision Statement

Building on over 300 years of tradition and heritage, Glastonbury continues to balance the preservation of its natural resources with the evolving needs of our community.

Through positive community partnerships, careful planning, and professional management, we are committed to the highest levels of responsive and equitable service, integrity, and fiscal responsibility.

Ongoing innovation, regional cooperation, and effective leadership will ensure that Glastonbury will always be a great place to live, learn, work, and do business.



Message from the Town Council



Paul M. Nye
Chairman

While the citizens of Glastonbury enjoyed the summer recreational programs and facilities available throughout town, the Council joined other Connecticut municipalities in seeking relief from the nearly limitless liability exposure under the Recreational Land Use Act for injuries sustained in town owned parks, nature preserves

and athletic fields. Continuing the momentum created by the Welles-Turner Library Second Century Fund, the Council set the library expansion referendum in motion for an ultimately successful passage in the fall. We also set the stage for the Main Street reconstruction project, one of the most significant road projects impacting our merchants and businesses. Through the capable and sensitive efforts of Town Engineer Daniel Pennington, the project has progressed on schedule with minimal interruption to area businesses. Capping a busy July, the Council held a special meeting to appoint Halloran & Sage as town attorneys with Shipman & Goodwin serving as labor and alternate town attorneys.

After a full summer of the Chamber-sponsored concerts on the green, the fall found the Council evaluating potential municipal uses for Academy School. The Council and Town Plan & Zoning Commission approved the construction of a hotel in Somerset Square in accordance with the master plan adopted in 1985. After more than ten years of service on the Council, my mentor, colleague and friend, Charles Monaco, resigned, leaving behind a record of accomplishment and dedication.

Owners of the Glastonbury Health Care Center sought an amendment to their approved plans in order to meet the changing needs of our senior population through the construction of additional assisted living units in lieu of congregate housing. The budget process for the 1997-1998 fiscal year consumed most of the Council's time for the winter months, including a new financial model to provide a method of long term financial planning for the Town to project debt levels needed to pay for future capital projects.

Property acquisition for the future remained a high priority for the Town, with negotiations initiated for

both the Arbor Acres property and the Liebler farmland. The potential future municipal use of the Arbor Acres parcel warranted extensive environmental testing to ensure that it would be safe for an elementary school. For more than ten years the Town has been interested in acquiring the Liebler property with its significant Connecticut River access, recreational potential and environmental significance. Additional land purchases will be required in the near future to provide a site for the new middle school needed to accommodate our growing school-age population.

While the continued rental of The Gallery has served to temporarily address some of the needs of our senior population, the Council recognized that a permanent solution is required. One of the final actions of the 1996-1997 fiscal year was the approval of a spring referendum for a senior center.

The next fiscal year will provide the Council with many challenges which it will well be able to handle through the excellent administrative skills of Town Manager Richard Johnson. Through his efforts and those of his staff, our duties as council members are able to be executed timely and effectively. In Glastonbury we are fortunate to work as a council of nine members, not as Republicans and Democrats as is the case in some neighboring towns. We should value what we have and work to ensure that it continues, as this approach truly best serves the people whom we represent.



Front row: Marti Curtiss, Paul M. Nye, Kurt P. Cavanaugh, Stephen N. Giamalis, Judith A. Stearns
Back row: Thomas F. Flanagan, George M. Purtil, H. David Megaw, Joe Broder

Message from the Town Manager



Richard J. Johnson
Town Manager

It is a pleasure to have this opportunity to comment on the many accomplishments and successes of the past year as highlighted in this Annual Report. Although too numerous to mention in the space below, I want to highlight several significant achievements as follows:

- The five elementary school renovation and expansion project was completed on time and within budget in preparation for the 1996-1997 school year.
- Glastonbury was presented the Government Finance Officers Association "Distinguished Budget Presentation Award" for fiscal year 1996-1997. This is the first time Glastonbury has received this highest form of government budgeting recognition.
- A lease with SNET for construction of a new Police communications tower was executed. The new tower will provide improved facilities at no cost to the taxpayer. Estimated value \$400,000.
- The Welles Turner Library renovation and expansion project was approved at referendum in November of 1996. The project is moving forward on time and within budget.
- Implemented a variety of technological initiatives to further improve customer service and the quality and effectiveness of Town operations.
- A 104-unit extended stay hotel proposed for Somerset Square was approved in April. Construction is expected to begin in 1998.

The Town's financial condition continues to be very bright as evidenced by the following:

The mill rate remains unchanged under the 1997-1998 budget adopted in March. Town operating budget growth has been limited to a combined 3.78% over the past five years despite the demands of a growing community. A stable tax rate remains a high priority of the Town Council, Board of Finance and management staff.

The October 1, 1996 net taxable Grand List increased by \$31.7 million, or 1.74% to a new total of \$1.852 billion. The 1.74% increase was among the lowest over the past

six years on a percentage basis. However, Glastonbury's Grand List growth continues to compare very favorably with communities throughout the region and state. Over the past six years, Grand List growth has averaged 2.63%.

In addition to the accomplishments and successes noted above, a number of projects are expected to be approved or move forward in the coming year. Highlights include:

- Land acquisition negotiations now underway will hopefully be successfully completed by late Summer. Open space acquisition remains a high priority.
- Butler Field improvements are scheduled for completion by late 1997. This project represents a successful partnership between the Town and youth sports groups with State grant assistance.
- Middle School and Community Center planning is expected to begin in early 1998 in anticipation of a Fall 1998 referendum.
- Work on the Library Renovation and Expansion project will begin in late summer with a January 1999 completion date expected.
- Main Street Reconstruction, now in its final stages, should be complete by late Spring 1998.

Looking ahead to 1997-1998, a busy and productive year is forecast. Challenges include: continued open space acquisition and preservation, work with the State Traffic Commission and local residents to successfully resolve issues pertaining to the Town owned Gateway Corporate Park, continued high quality economic development consistent with the Town's Plan of Development, presentation of the Middle School and Community Center proposals at public referendum, and prudent management of the Town's financial resources. With the successes and accomplishments of past years, I am confident that Glastonbury is well positioned to meet these and other challenges in the years ahead.

As I conclude this report, I want to express my sincere thanks and appreciation to the staff, board and commission members, residents and others who consistently dedicate their time, efforts and talents on behalf of the community. Without their collective efforts, the successes and accomplishments highlighted throughout this Annual Report would not be possible.

Board of Education



Jacqueline Jacoby
Superintendent of
Schools

The Glastonbury Board of Education oversees the education of its 5,500 students and sets the policies which govern the school system. The Board directs educational and facility planning, allocation of resources and the staffing of the town's eight schools and co-directs the efforts of the East Hartford-Glastonbury Magnet School.



Suzanne Galvin
Board of Education
Chairperson

The 1996-1997 school year was another year of growth for the Glastonbury Public Schools. The student population has been increasing throughout the decade. The instructional programs to meet the needs of our students have grown as well. A description of the system's educational initiatives, issues and accomplishments follows.

CONCLUSION TO THE ELEMENTARY BUILDING ADDITION AND RENOVATION PROJECT

Each of the five elementary schools was under construction through the summer of 1996. The addition of twenty-four classrooms at Buttonball Lane, Hebron Avenue and Hopewell School was completed successfully and all five elementary schools were also renovated to meet state and town safety, handicap and telecommunication guidelines. The conclusion of the elementary building project was marked by cooperative PTO projects including the installation of additional playscapes and extensive landscaping. Following the construction and after an extensive study, the elementary district lines were adjusted to match population with the new facilities.



Extracurricular activities are important to students.

TECHNOLOGY

The Board of Education's long range Technology Plan entered the second year of an ambitious four-year plan that included the installation of four multi-media computers in every fourth grade classroom and the addition of specific, technology based instructional units within the curriculum. In addition, the plan also added two networked Windows based computer labs at Glastonbury High School. The intent of the plan was to increase the use of technology in increments by focusing on the fourth grade in 1996-1997, and the fifth grade, Gideon Welles and GHS in 1997-1998. The new library media centers in the elementary schools gained full telecommunication capability and will be networked to classrooms and to their respective school office. Ongoing staff development, summer workshops and after school training for teachers have helped to tie the benefits of technology to the K-12 curriculum. The impact of technology on instruction continues to grow and the specific area of telecommunication has produced the most profound new learning opportunities for our students.

Board of Education

CURRICULUM AND INSTRUCTION

The overall goal of the Glastonbury Public Schools is to raise the academic expectations and achievement for all students. During 1996-1997, there were a number of indicators of our success in "raising the bar" for all.

CMT AND CAPT

The students in grades 4, 6, 8 and 10 statewide undergo extensive and academically challenging tests. Glastonbury students have scored consistently higher than both the state averages and the average scores of similar communities. In addition, the student scores, which are already much above the state average, have continued to improve since the state wide testing program began in 1992.

LEARNING INITIATIVES

One of the reasons for improved academic achievement has been the cluster of initiatives involving elementary student learning. Early literacy efforts to prevent reading failure have met with strong, measurable success. A pilot summer school program has been offered for students at Naubuc School. In addition, mathematics learning packets have been sent home for summer use by elementary students, and a summer reading program for elementary and secondary students has been put in place.

Teacher learning during the summer has also been a priority. Close to forty workshops focusing on technology, student reading and writing and science were offered during the summer months.

ADVANCED PLACEMENT COURSES AT GLASTONBURY HIGH SCHOOL

The number of GHS courses which would offer college credit under the Advanced Placement Program was increased by 100%. The AP courses are highly demanding and highly structured. This academic program meets well defined national standards and is recognized as college level work by leading universities throughout North America.

THE FUTURE

The Board of Education of the Glastonbury Public Schools will continue to focus on its priorities, facility needs, particularly at the middle and high school level, technology expansion and increased academic expectations and achievements during the 1997-1998 school year.



Students learning together.

Probate Court



Donald L. Hamer
Judge of Probate

The Probate Court for the District of Glastonbury provides a broad range of services in accordance with its mandates under Connecticut General Statutes. These include services to mentally ill and incapable adults as well as adults with mental retardation; guardianship of the estate and person of minors; terminations of

parental rights; adoptions; paternity matters; changes of name; marriage waivers; decedents' estates; trust estates and performance of marriages. The court also processes passport applications.

During the past year, I have been privileged to serve on the Connecticut Probate Assembly's Executive Committee and its Regulations Subcommittee. I have continued to serve as chairperson of the Conservator/Guardian Standards Committee of the Assembly. The Connecticut Probate Assembly considered and acted upon many of the aspects of an ongoing self-study. As my report last year indicated, this study was necessitated in part by the gradual phase-out of the Connecticut succession tax which, while it has never funded the courts directly, has served as the basis for calculating probate fees in decedent's estates. Our study focused primarily on alternate plans for court funding without tapping general revenues, expanding the jurisdiction of the probate courts and reorganization of the 132 probate courts into a smaller number of courts. The self-study, and the ensuing legislation by the Connecticut General Assembly, has modified the system by which our Probate Courts are funded. It is expected that over time this new system will result in some of the smallest courts (serving fewer than 20,000 people) merging with other courts. It remains to be seen how the recent revision in Federal Estate Tax law will

effect the new funding package in general, and the Glastonbury Probate Court in particular.

The past year has marked another change which will be more obvious to the people of Glastonbury. After 22 years of dedicated service, Allene M. Scaglia retired as Chief Clerk of the Court effective May 31, 1997. Appointed when the Court was first created in 1975, Allene, along with my esteemed predecessor, Judge Donald F. Auchter, was instrumental in establishing the fine reputation for service to the community and administrative efficiency for which the Glastonbury Probate Court has become recognized throughout the State. Her retirement comes as a loss to the many other probate judges and clerks who frequently call her for advice in unusual circumstances. She also will be missed by the innumerable residents of Glastonbury and their loved ones for whom she has been a source of reassurance and assistance at some of the most difficult times in their lives. You will occasionally still find her in the Court, filling in during vacations and at other times as well. I know the citizens of Glastonbury join me in bidding Allene Godspeed and in wishing her some much deserved rest, relaxation and enjoyment as she begins this new phase in her life's journey.

At the same time, I am most pleased to announce the appointment of Ms. Esther Buffington as the new Chief Clerk of the Court. A Glastonbury resident, Esther brings a wealth of experience to the job, including over seven years as the Assistant Clerk of the East Hartford Probate Court. She will join Assistant Clerk Patricia Kepler in managing the day-to-day operations of the Court. I am confident that the citizens of Glastonbury will find in Esther the same warmth, understanding and dedication to public service which have marked Allene's tenure as Chief Clerk.

Legal Services



Jean M. D'Aquila
Town Attorney

In 1996, Halloran & Sage was selected as Glastonbury's Town Attorney. We are honored to have the opportunity to serve the Town and its residents, particularly because a number of our own attorneys and staff live in or have close ties to Glastonbury. We have served as Town Attorney for Glastonbury's neighbor, the

Town of Portland since 1963. Over the years we have also served as Town Attorney in Durham, Haddam, Cromwell and Simsbury. Additionally, we have been appointed as special counsel for many other municipalities in Connecticut, and look forward to using that

experience for the benefit of the Town of Glastonbury.

To date, we have been involved in a wide array of Town matters, including land acquisition issues, tax appeals, contract preparation, and Charter review and interpretation. The legal work has been challenging and interesting. We are impressed with the high degree of dedication and commitment of the Town's elected and appointed officers and employees. We appreciate the cooperation and support we have received from all as we have undertaken the important task of serving as this town's legal representative. We look forward to working with these enthusiastic public servants for years to come.

Administrative Services

The Administrative Services Department is responsible for the preparation of budgets, financial reporting, land records, property assessment, and the collection of taxes and sewer use fees. In addition, it oversees the acquisition of good and services, insurance procurement, legal services, debt sales, voter registration management and coordination of computer services.

BOARD OF FINANCE

The Board of Finance is a bipartisan Board which operates in partnership with the Town Council and the Board of Education. In its advisory role, the Board recommends an annual budget to the Town Council and recommends and/or authorizes transfers among and between accounts and funds during the fiscal year. By direct authority the Board establishes the annual mill rate of taxation after reviewing the final budget approved by the Town Council.

FINANCIAL ADMINISTRATION

This office coordinates the preparation of the operating and capital improvement budgets for the Town Manager. The staff works with the Board of Finance to review financial reports and make recommendations as requested to the Town Council and Town Manager. This office serves as staff liaison to the Insurance Advisory Committee in risk analysis and annual insurance renewals.

- Completed installation of an Office Suite Software package and a network of fiber optic cable to Police, Sanitation and Facilities Maintenance to streamline budgetary and financial reporting.
- Maintained Aa1 designation with Moody's Investment Services for the Town.
- Presented a financial management plan through the year 2021 to project operating

Administrative Services

costs and the issuance of potential debt for the library, community center and a middle school.

ACCOUNTING

The Accounting Division is responsible for providing complete and accurate financial information in proper form and on a timely basis. This division prepares the year end comprehensive annual financial report, processes employee payroll, payables, and receivables. The division is also responsible for investment management procedures to maximize interest income on all funds and internal audit functions to insure that proper controls and procedures are being followed.

- Received the Certificate of Excellence in Financial Reporting for the period ended June 30, 1996, awarded by the Government Finance Officers Association.
- Established new procedures and policies to streamline the accounts payable process.
- Implemented new electronic banking services to reduce per unit banking fees.
- Implemented enhanced financial software for increased efficiency in processes.

REVENUE COLLECTION

The Collector of Revenue's office is responsible for the timely collection of funds necessary to support both governmental and educational services. Those funds account for over 85% of the Town's annual budget. Taxes and fees for the fiscal year 1996-1997 totaled \$54,862,040 and sewer charges and fees totaled \$1,367,635.

- Collected back taxes totaling \$771,361.
- Accomplished a tax collection rate of 98.9% on current levy.

- Worked with Town Attorney to successfully collect on 32 delinquent accounts totaling \$536,929.

PROPERTY ASSESSMENT

The Property Assessment Division administers an ad valorem tax program in compliance with State Statutes. It compiles the annual Grand List of taxable and exempt property including the valuation and revaluation of real estate, motor vehicles and business personal property.

- Initiated CAMA (Computer Assisted Mass Appraisal) training for annual real estate valuation updates.
- Completed office renovations/customer service area to improve efficiency of operations.

TOWN CLERK

The Town Clerk's office is the center for public records and information including land records, vital statistics, elections, military discharges, notaries public, liquor permits, minutes of the numerous boards and commissions, and various licenses. The office also answers the numerous and varied questions which individuals have concerning the Town. The Town Clerk's office, which is mostly governed by state statute, is a major collector of revenue for the State of Connecticut as well as for the town.

- Collected approximately \$944,000 for the State and \$393,500 for the Town, 12% above the previous year.
- Formulated E-Mail guidelines and guidelines for Land Record Revenue Sharing With Private Enterprise.

Youth & Family Services

Glastonbury Youth and Family Services made a consistent effort to provide positive development opportunities to empower youth and families. A questionnaire was distributed and of the 126 customers who responded, 96 were very satisfied with the services received; 26 were somewhat satisfied; and only 4 were neither satisfied nor dissatisfied.

- Provided outreach services to 1,135 youth and families through the following programs: Peer Education, Welles Village Activity Council for Youth (WACY), Outreach Services, Open Houses, and classroom presentations.
- Provided clinical services to 625 individuals and 325 families and conducted 15 support and therapy groups and 19 school and community presentations.

- Creative Experiences provided services to 1,165 youth and families, assisted with the video production of "Town Hall Happenings," and served youth and families in the shows "South Pacific" and "Into the Woods" performed by the spring traveling troupe.
- Produced a sixteen minute videotape explaining the services of the agency in cooperation with Luci Leone of the Youth and Family Commission.

The Youth and Family Services Commission, an advisory group to the Town Council, continued to study diversity and multiculturalism within the community. They invited speakers to discuss topics on multiculturalism and diversity; Coffee House program; Glastonbury ABC House; and teenage smoking among other topics.

Social Services

SOCIAL SERVICES DEPARTMENT

The Social Services Department strives to assist with the economic and social service needs of local residents experiencing difficult times. State sponsored programs administered by the department include: the Department of Labor Stipend Program, Energy Assistance, General Assistance, Operation Fuel, Renters' Rebate and the Self-Initiated Food Stamp Community Service Program. Local programs include: Case Management, CROP Walk, Discretionary Funds, Evictions/Ejectments/Public Auctions, Food Bank, Fuel Bank, Health Care Provider Registry, Holiday Programs, Recreational Fee Waivers and Salvation Army Funds. In addition to administering these programs, the department also provides advocacy, assessments, and information and referral services. The Social

Services Administrator serves as the staff liaison to the Human Relations Commission which is charged with investigating complaints of illegal discrimination in the workplace, housing and education. No complaints were received by the commission during 1996-1997.

- Completed year long time study to identify possible gaps in service and most requested services.
- Implemented and/or expanded the Case Management Program, Department of Labor Stipend Program, Health Care Provider Registry, Recreational Fee Waivers and Salvation Army Funds to address identified needs.
- Established Local Area Network (LAN) within the department.

Parks & Recreation

The Parks and Recreation Department and Fine Arts Commission continue to provide a wide variety of recreation opportunities which work to enhance the quality of life in Glastonbury. Town sponsored programs, public open space, and recreation facilities work together to meet the diverse needs and interests of the community and its members.

In partnership with the Glastonbury Rotary Club, Little League, and Hartwell Sports Club, renovations to Rotary Field were completed. Two baseball fields reopened in May, and a soccer field is scheduled to reopen in September.

With volunteer support from the respective Parent-Teacher Organizations, landscaping improvements were completed at the Naubuc, Hebron Avenue, Buttonball and Hopewell elementary schools. The Eastbury School landscaping project will be completed in the fall.

The Parks and Recreation and Highway Department staff restored the upper pond in J.B. Williams Park by removing years of accumulated sand and sediment. Erosion problems along the stream bed feeding the pond were also eliminated.

The renovation of Butler Field, located on Forest Lane, was begun. When complete, one baseball and a combination baseball/softball field will have been completely renovated and irrigated. The project also includes parking expansion, security lighting, and landscaping. The Glastonbury Little League has committed \$45,000 towards the project. The fields are scheduled to reopen during the spring of 1998.

"Awesome Adventures" accurately describes the new summer adventure program planned for youth in grades 6, 7, and 8. The program will include field trips, ropes course challenges and other activities of interest to teens. A total of sixty youth are expected to participate in the four week program.



Children's tennis lessons.

Several park improvement projects were completed including the paving of the lower parking lot at Addison Park; resurfacing the tennis courts in Addison Park; installation of a new water service at Welles Park; and, the installation of new pH and chlorine monitoring and feeding equipment at Grange Pool.



Member of swim team competing in a meet.

After receiving review and input from the Great Pond Stewardship Committee, Conservation Commission, Nature Conservancy, Recreation Commission and Town staff, chapter 14 of the Code of Ordinances was revised to include regulations for the Great Pond Nature Preserve. The entire section of the code which governs use of Town parks and open space was updated at the same time.

Department staff supported the efforts of the Parent-Teacher organizations at the Buttonball, Hebron Avenue and Eastbury Schools as each purchased and installed new playscapes. In addition to school use during the regular school day, the structures receive extensive evening and weekend use.

The Fine Arts Commission sponsored two programs which were both well received. The Commission pre-purchased tickets to the January 17 show of *Miss Saigon* at the Bushnell Theater. Doing so not only gave the public an additional opportunity to get tickets to a sold out show, but offered a discounted group rate. In December, a "Holiday Gathering" at the Congregational Church in South Glastonbury featured a Baroque Trio and Silent Auction.

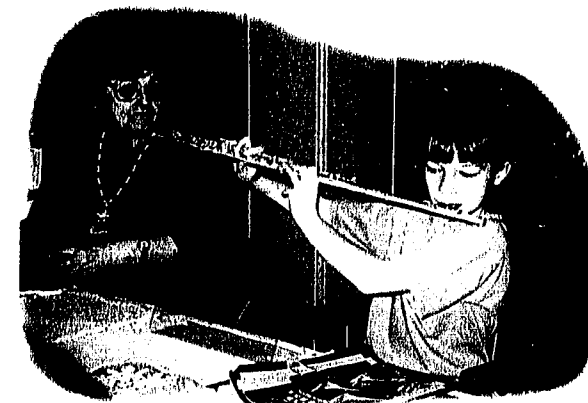
Senior Services



Marge Heise (l) and Bertha Smart (r) at the Gallery New Years Party.

The Senior Services Department operates as a community focal point for the coordination of multi-purpose services and programs, for Glastonbury seniors who are living independently or with families in the community. The Department services town residents age sixty years old and over, in order to promote independence, personal enrichment and an enhanced quality of life.

The Dial-A-Ride program provides accessible in-town transportation for seniors and disabled adults. The Department also offers seniors a daily nutritious lunch program. The Elderly Outreach Program helps frail and homebound seniors access the information and services needed to remain independent in the community. The Longevity Club is a program for frail seniors which offers stimulating mental and



Helen Pudlow (l) and Kristen Fiedler (r) at Senior Center Holiday party.

physical activities in a structured, supervised setting. A variety of town sponsored cultural, recreational and wellness programs are offered at the Senior Center and at various locations throughout the Town. Information on services and programs for seniors is available through a monthly informational newsletter, *The Sharing Tree*, which is distributed to approximately 1,500 Glastonbury residents.

The Senior Services Volunteer Program helps the community face the challenge of providing necessary services with limited resources. Approximately 100 volunteers donate their time and talents to offer a wide variety of services that benefit the Glastonbury seniors.

Some of the Senior Services Department's accomplishments of the past fiscal year include the following:

- Provided Elderly Outreach Services to 364 Seniors and their families, a 20% increase in service. This program assists seniors in maintaining their physical, social and financial independence by providing information, referral, and in-home support services to seniors and their families.
- Developed a variety of new Senior Center Programs which led to a 24% increase in participation.
- Developed the Lend-A-Hand Program, a volunteer chore person service, in cooperation with the Rotary Club.
- Provided 16,664 rides to senior and disabled residents through the Dial-A-Ride Program.
- Accommodated the need for dedicated, accessible space for the Senior Luncheon Program and provided 10,707 nutritious lunches, a 19% increase in service.

Public Libraries

WELLES-TURNER MEMORIAL LIBRARY

The principal Library event of the year has been the passage of the \$5,750,000 referendum for the expansion and renovation of the Welles-Turner Memorial Library. Since the referendum, many Town Departments and boards have worked rigorously with the Library Board to complete the preliminary work required for the construction documents.

The Library program has continued to grow in scope and service. The following present highlights of the 1996-1997 fiscal year at the Library:

- Conducted Summer reading program for Glastonbury's elementary school children.
- Performed customer focused collection analysis.
- Established increased public computer platforms for public use.
- Established Internet Access and training for staff and patrons.
- Established Senior Day.
- Established pilot programming for children 15 to 24 months old.
- Provided business workshops for local businesses.
- Increased Library usage up 7% vs. last year's 2% placing Glastonbury as the fifth most used public library in the Capitol region.
- Conducted summer reading program for Glastonbury's middle and upper school students.
- Established new Local Area Network for public and staff use.
- Introduced the LIBRIS integrated fund accounting and acquisitions system.
- Added new computers for public and staff use.
- Celebrated the 10th anniversary of the Library's Day Care Outreach Program.
- Introduced new business databases on the LAN.



Internet class for Seniors at the Welles-Turner Memorial Library.

Public Libraries

EAST GLASTONBURY PUBLIC LIBRARY

The East Glastonbury Public Library, 1389 Neipsic Road, is a Connecticut non-profit corporation that was incorporated in 1960, and is staffed completely by volunteers. "The Little Red Library," so-called, was originally the Neipsic School which was built in 1889 as a one-room school house. In the year 1900 a second room was added. At this time there were four grades in each room with two teachers who taught the eight grades.

When Eastbury School was built next to the old school house in 1949, it did not have its own library. A group of parents banded together to form a library to be housed in the old Neipsic School, with approval and help from the Town of Glastonbury. It has grown to its present level, offering an enviable children's collection as well as fiction and nonfiction in the adult room, including most of the books on the best-seller list, and a large selection of magazines. Residents of Glastonbury, young and old, may borrow books and periodicals on a two-week, renewable, basis.

The Library also serves classes from Eastbury School. It sponsors a summer reading program for children who will be in kindergarten at Eastbury in September. Wednesday mornings during the school year, there is a free story hour for children from 3 to 5 following a Kiddie Kraft program sponsored by the YMCA. An adult book study group led by the Reverend Chester Wetzal is held Monday mornings from September to May.

The Library has an active Friends group which conducts a Book, Bake & Bric-a-Brac Sale each March as well as a Books-Only Sale in September. Donations of books and bric-a-brac,

excluding clothing, may be made at any time throughout the year for these sales. The money raised is used mainly to buy books. The Board of Directors conducts an annual Fund Drive in the fall to raise the money necessary to help pay the library's operating expenses and to purchase new books.

The Library is open Mondays from 1:00 pm to 4:00 pm and 7:00 pm to 9:00 pm; Tuesdays from 9:00 am to 4:00 pm; and Thursdays from 9:00 am to 4:00 pm and 7:00 pm to 9:00 pm. The telephone number is 633-5637.

SOUTH GLASTONBURY PUBLIC LIBRARY

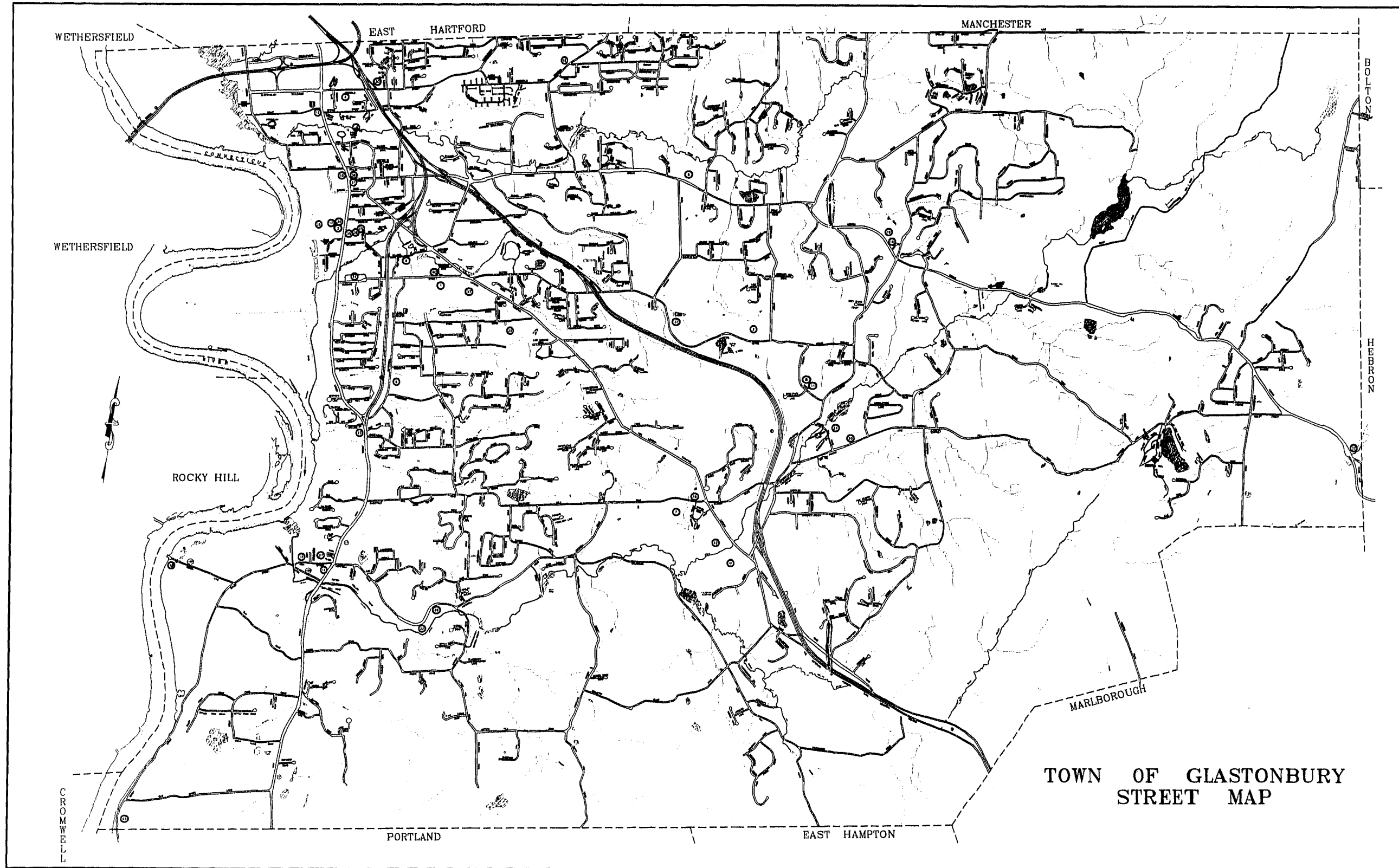
South Glastonbury Public Library, located at 80 High Street in South Glastonbury, is staffed entirely by volunteers and overseen by a Board of Trustees.

The Library provides local resources for the education and recreation of the community including books, periodicals, recordings supplemental to whatever additional services, facilities, or exhibitions may be of interest and need to this community. The Library also encourages and supports the development and appreciation of the literary and artistic heritage of the country which include the selection and purchase of books, recordings, periodicals and other related materials to help the community achieve a deep enjoyment of life, a broader understanding of themselves and the problems of the world.

The Library is open Sundays from 2:00 pm to 4:00 pm and Mondays, Wednesdays and Thursdays from 1:30 pm to 3:00 pm and 7:30 pm to 9:00 pm.

The Town of Glastonbury

Street Map



EDUCATIONAL FACILITIES

1. Glastonbury High School
2. Gideon Welles Junior High School
3. Academy School
4. Naubuc Elementary School
5. Hebron Avenue Elementary School
6. Burtonball Elementary School
7. Hopewell Elementary School
8. Eastbury Elementary School
9. Board of Education
10. Welles-Turner Public Library
11. East Glastonbury Public Library
12. South Glastonbury Public Library

FIRE STATIONS

13. Company 1
14. Company 2
15. Company 3
16. Company 4

RECREATIONAL FACILITIES

17. Academy Field
18. Addison Park
19. Buckingham Park
20. Butler Field
21. Center Green
22. Cotton Hollow Preserve
23. Audubon Society and Earle Park
24. Eastbury Pond
25. Glastonbury Memorial Park
26. Grange Pool
27. High Street School Park
28. Rotary Field
29. Salmon Brook Park
30. Welles Park
31. J.B. Williams Park
32. Blackledge Falls
33. Glastonbury/Rocky Hill Ferry

MUNICIPAL FACILITIES

34. Town Hall
35. Police Station
36. Senior Citizen's Center
37. Parks and Recreation Department
38. Ambulance Building
39. Facility Maintenance/Water Pollution Control Facility
40. Youth and Family Services
41. Town Garage/Highway and Vehicle Maintenance Departments
42. Transfer Station
43. Bulky Waste Facility
44. Hubbard Green

Housing Authority

The Housing Authority currently administers a total of 439 assisted dwelling units within the Town of Glastonbury. These include the following housing developments: Welles Village, Center Village, Village Green, Herbert T. Clark House, and Section 8.

In addition, the Housing Authority also serves as the administering agency for the Town of Glastonbury's Moderate Condo program.

During the past year, the Housing Authority has pursued a number of new projects. These have included:

- Received \$375,000 in funding from the U.S. Department of Housing and Urban Development Comprehensive Improvement Assistance Program to replace roofs in Welles Village.
- Completed the replacement of water mains and lines in Welles Village, turning over ownership and operation to the MDC.
- Continued Welles Activity Council for Youth (W.A.C.Y.), in conjunction with the Town's Department of Youth and Family Services. Through a cooperative effort of the Housing Authority, the Town's Department of Youth and Family Services, and the Glastonbury Police Department, the teen youth of Welles Village were organized into a youth basketball league, which ran for the better part of the summer, and provided a valuable outlet.
- Assisted in the establishment of the Glastonbury Community Council.
- Revised and updated the administrative plan for the Authority's Section 8 rental assistance program.
- Participated in the General Assembly's Task Force on Congregate Housing, which made several recommendations which were subsequently adopted.

Facilities Maintenance

The Facilities Maintenance Division provides comprehensive facility maintenance and management services for all municipal buildings. In addition to preventative maintenance, energy management and project management, the division provides custodial support and coordination with vendors for all Town agencies. The division also manages the utility and communication accounts for all facilities except the Board of Education, and provides staff support to the Public Buildings Commission.

- Provided construction supervision and project management for several roof replacement jobs including the Police Facility and Water Pollution Control Facility.
- Installed a new fire alarm system in Town Hall.
- Facilitated design efforts for the Welles Turner Memorial Library Expansion Project in conjunction with the Public Buildings Commission.
- Completed phase two of interior improvements to Town Hall.
- Completed window replacement at the Youth & Family Services annex to protect the building and conserve energy.
- Completed renovations to the Highway Garage including improvements to create a more accessible facility.
- Completed renovations to the Tax Collection/Assessor's office to gain efficiencies, improve customer service, and enhance the work environment.

Community Development

The Community Development Department is comprised of four operating divisions: Building Inspection, Fire Marshal, Health, and Community Development. Together, the Department is responsible for the management of land use, building, environmental protection, economic development, zoning and code inspection activities. Support services are provided to the Town Plan and Zoning Commission, Conservation Commission, Economic Development Commission, Zoning Board of Appeals and other boards and commissions as necessary.

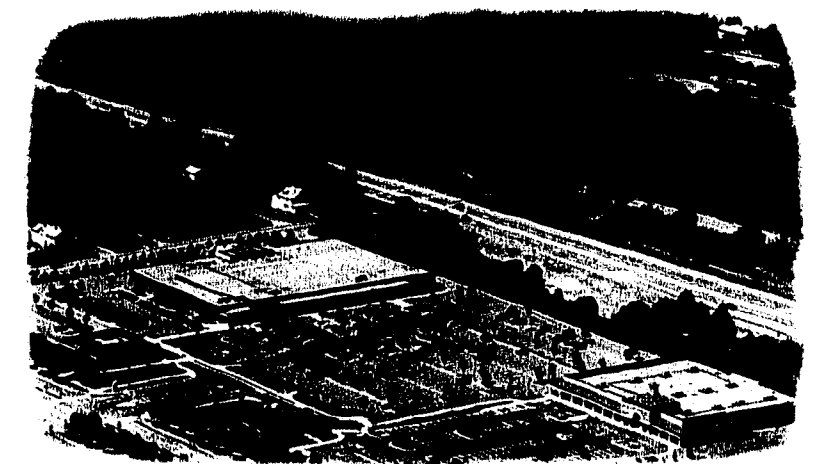
Land use activities are guided by the 1995 Plan of Conservation and Development adopted by the Town Plan and Zoning Commission. This policy document will guide development into the first few years of the 21st century. We encourage you to familiarize yourself with this plan. Copies are available for review or purchase at the Office of Community Development, 3rd floor, Town Hall. Additionally, we welcome your inquiries on this or other planning issues.

DEPARTMENT HIGHLIGHTS

- Performed significant review and inspection of renovated elementary schools to facilitate an on-time opening.
- Implemented a broad based Economic Development Training Program for board and commission members.
- Performed detailed environmental planning in conjunction with the Welles-Turner Memorial Library expansion.
- Developed and established a hazardous material training exercise for public safety officials.
- Conducted specialized environmental analysis of several properties.
- Organized and conducted work in the Preserve to prepare it for the public's passive recreational use.
- Established a set of rules for the Preserve that are now contained within revised Town Ordinances.
- Assisted The Nature Conservancy in the preparation of an informational brochure on the Preserve.
- Officially opened the Preserve to the public with a ceremonious event that included over 100 participants.

GREAT POND PRESERVE STEWARDSHIP

The Great Pond Preserve Stewardship Committee is responsible for guiding management of the Great Pond Preserve which is located westerly of Main Street and southerly of Great Pond Road. Accomplishments this past year include:



Aerial view of Somerset Square.

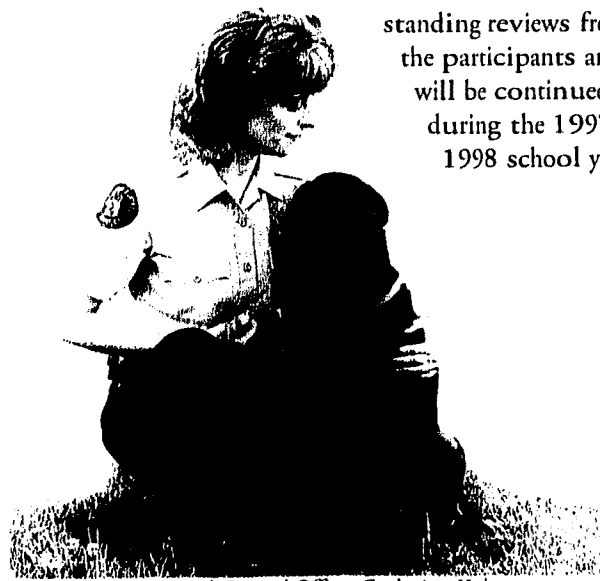
Police Department

The Glastonbury Police Department handled over 20,500 cases during 1996-1997, a 2.8% increase from last year.

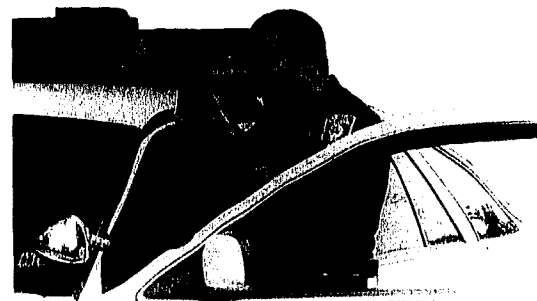
- Traffic - 8,776 cases
- Service - 7,298 cases
- Criminal - 4,515 cases

The Youth Unit recently completed its ninth year teaching the D.A.R.E. Program for sixth graders at Academy School. Students are not only taught what drugs can do to their bodies and lives, but also resistance techniques and how to make good decisions. A total of 406 students graduated from the D.A.R.E. program.

In the spring of 1997, the Police Department's Youth Unit sponsored an initial pilot of the D.A.R.E. Parent Program. Twenty-four parents enrolled in the six week program and were taught such subjects as: effective communication, drug abuse prevention, youth pressures and violence. The Parent Program is designed to facilitate discussion among parents and increase communication between parents and the existing town agencies that work with their children. It received outstanding reviews from the participants and will be continued during the 1997-1998 school year.



Animal Control Officer Catherine Kodes.



Officer Brian Herwerth uses the department's new speed detection laser.

The Glastonbury Police Mountain Bike Patrol was formed in 1993 as part of a larger community police initiative. It began with three officers and has increased to the current twelve trained and certified officers. Bicycle officers supplement cruiser patrols in the commercial district, Welles Village and special events in town. Many citizens have praised the bike patrol as a way for officers to keep in touch with the community.

The Police Department obtained a hand held speed measuring device (laser unit), with a traffic safety grant in 1996. This device has pinpoint accuracy and shows vehicle speed almost instantly. The laser joins with conventional radar as a speed enforcement tool.

A police cruiser video recording system was acquired with funding from a special Federal/State Traffic Grant. The system is currently being used in a marked traffic cruiser and allows for automatic audio/visual recording on every traffic stop.

The Animal Control Officers responded to 862 animal complaints during 1996-1997. State laws have expanded the traditional "dog warden's" duties to include cats, all domestic and wild animals, birds and reptiles. There was an influx of rabies cases, primarily exhibited in raccoons and skunks.

Fire Department

The Glastonbury Fire Department provides a wide range of fire suppression, hazard mitigation, fire prevention, and rescue services throughout the Town of Glastonbury. The department, which operates out of four stations, is manned by volunteers and is headed by a full-time fire chief.

An extensive training program keeps the department's members prepared to respond to emergencies of all types. This program includes new recruit and refresher training programs, and opportunities to attend classes at state and national fire academies. Most of the department's officers and firefighters hold nationally recognized certifications.

The fire department also sponsors a "Fire Cadet" program that provides youths, ages fourteen and up, the opportunity to experience first hand what the fire service has to offer, and allows them to gain leadership, social, and organizational skills essential to success in life.

The fire department provides an unparalleled opportunity for interested persons to help others while having fun at the same time. No experience is required for membership, as the department provides a comprehensive training program meeting nationally recognized standards. For further information, contact the emergency services volunteer hotline at (860) 652-7547. This line is open twenty-four hours a day.



Glastonbury Volunteer Firefighters in action.

Civil Preparedness

The office of Civil Preparedness is responsible for coordinating all governmental and private sector activities in times of man-made or natural disasters, and serves as a member of the local Emergency Planning Committee.

The office is very active in planning for manpower, equipment and community needs. This involves continual updating of information, regulations and equipment. The office conducts constant checks of materials and equipment, including the town warning sirens.

In disaster situations, the office updates information and instructions to the citizens via its

disaster information telephone number (652-7578). There is a state-of-the-art mobile telecommunications van equipped to function as back-up should the Town's main system fail.

Radio station 1570 AM, WPII600, provides emergency and traffic information to the citizens of Glastonbury 24 hours a day, 7 days a week. Engineering and construction was done by Civil Preparedness staff. The telecommunications van's transmitting antennas were up-graded to a low profile type that will insure operability during high wind situations and while driving under low-lying structures.

Sanitation

WATER POLLUTION CONTROL DIVISION

The Water Pollution Control Division provides the collection and treatment of wastewater generated within the Town of Glastonbury, develops and administers sewer use rates and ordinances, and provides staff support to the Water Pollution Control Authority. During Fiscal Year 1996-1997, the Water Pollution Control Facility processed an average of 2.0 million gallons of wastewater per day.



Norman Godwin gives tour of facility to students.

- Processed 781 million gallons of wastewater and disposed of 546 tons of sludge at the Water Pollution Control Facility.
- Maintained stable sewer use rate at \$1.20 per ccf for the second consecutive year.
- Obtained funds from CL&P to perform an energy study at the Water Pollution Control Facility. The study has been completed and recommendations implemented.
- Water Pollution control staff rebuilt the sludge thickening units.
- Completed plans and bid for Eastbury Pump Station improvements with completion expected in the fall of 1997.
- Disposed of 3,097 tons of refuse at the Transfer Station, 3,632 tons of bulky waste at Bulky Waste Facility, and 2,501 tons of materials were recycled.
- Implemented revised disposal guidelines and fees to direct volume generated disposal program.
- Started construction of a Capitol Region East Operating Committee (CREOC) Regional Household Hazardous Waste Disposal Facility in Manchester to service seven municipalities including Glastonbury 12 days per year with four satellite collections per year.
- Conducted four one day Regional Household Hazardous Waste Collections under the CREOC program, which served over 2,500 households.
- Removed underground diesel fuel storage tank at our Bulky Waste Facility and replaced it with an environmentally safe above-ground system.

REFUSE DISPOSAL DIVISION

The Refuse Disposal Division operates solid waste disposal and recycling facilities and administers permits for private collectors, ordinances and operating guidelines for waste disposal facility users.

Recycling brush at the Bulky Waste Facility.



Physical Services

The Physical Services Department is responsible for the maintenance and inventory of the Town's roadway, storm sewer, sanitary sewer, and traffic control systems. This includes the existing network as well as additions proposed through subdivision and site development.

ENGINEERING DIVISION

The Engineering Division, in conjunction with the Connecticut Department of Transportation, awarded a construction contract for reconstruction of approximately one-half mile of Main Street within the Central Business District. Town staff activities relative to the project include construction inspection and community liaison services. The Division also completed design and performed layout and inspection services for parking lot construction at Hebron Avenue and Eastbury Schools.

HIGHWAY DIVISION

The Highway Division completed extensive interior renovations to the Town Garage during the past winter. New handicapped-accessible restrooms were constructed and several offices were renovated -- primarily with "in-house" labor. The Division, in conjunction with the Parks Department, made significant improvements to the upper pond and tributary stream channel at J.B. Williams Park.



Rob Edwards adjusts traffic counter.

VEHICLE MAINTENANCE DIVISION

The Vehicle Maintenance Division is responsible for preventive maintenance and repair on all Town-owned vehicles and heavy equipment, including major repairs to school buses and fire apparatus. During the past year, a new floor drain system was installed in each repair bay in order to effectively collect vehicle fluids for proper disposal. This project is part of an ongoing effort to lessen environmental impacts associated with routine garage operations.

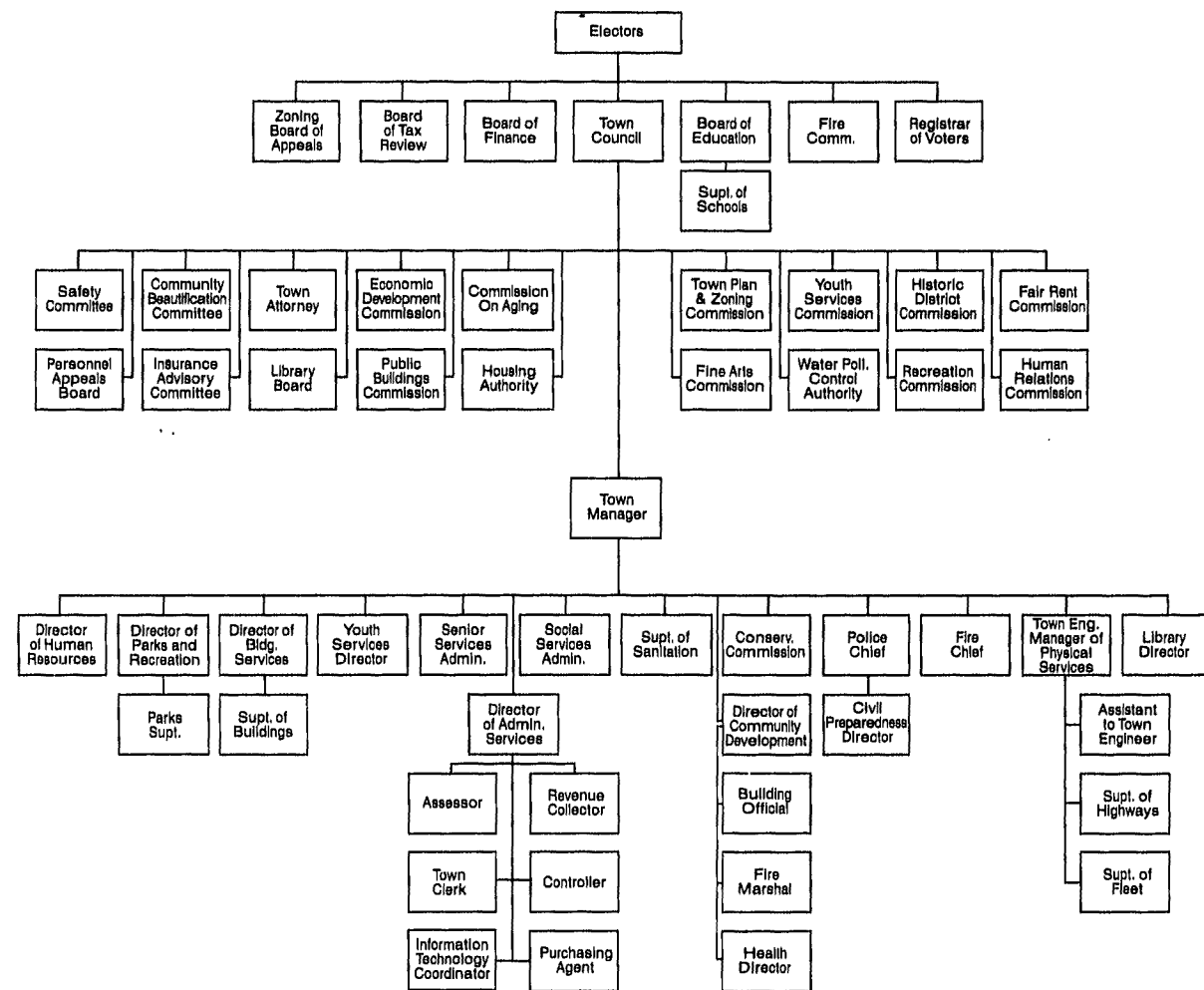
WATER POLLUTION CONTROL AUTHORITY (WPCA)

The Water Pollution Control Authority is responsible for reviewing and approving sanitary sewer connections and expansions, and for assessing future needs of the system. The current system consists of 94 miles of pipe and has 4,924 connections. The Water Pollution Control Authority establishes rates and procedures to recoup the cost of maintenance, repair, expansion, and operation of the sewer system. During the 1996-1997 fiscal year, the Authority, in conjunction with the Engineering Division, designed and constructed sanitary sewers to serve the Tall Timbers Drive area.



Sylvina von Pachecki utilizes the Engineering CAD system.

Town Administration



TOWN MANAGER
Richard J. Johnson

CHIEF OF POLICE
James M. Thomas

COMMUNITY DEVELOPMENT DIRECTOR
Kenith E. Leslie

DIRECTOR OF FINANCE AND ADMINISTRATIVE SERVICES
G. Ted Ellis

DIRECTOR OF HUMAN RESOURCES
Susan J. Hebert

TOWN ENGINEER/MANAGER OF PHYSICAL SERVICES
Daniel A. Pennington

ASSESSOR
Leon J. Jendrzeczyk

ASSISTANT TO TOWN ENGINEER
Chester G. Hamlin

BUILDING OFFICIAL
Edward P. Pietrycha

CIVIL PREPAREDNESS
Robert F. DiBella

COLLECTOR OF REVENUE
Madeline G. Rettberg

CONTROLLER
Lisa A. Martin

DIRECTOR OF HEALTH
David W. Boone

DIRECTOR OF PARKS, RECREATION & FACILITIES MAINTENANCE
Raymond E. Purtell

FIRE CHIEF
Stephen W. Haines

FIRE MARSHAL
Christopher N. Siwy

FLEET SUPERINTENDENT
Thomas O. Tierney

HIGHWAY SUPERINTENDENT
Scott G. Zenke

HOUSING AUTHORITY DIRECTOR
Ivan Pour

LIBRARY DIRECTOR
James G. Johnston

INFORMATION SERVICES/ TECHNOLOGY COORDINATOR
Joseph Kelly

PURCHASING AGENT
John A. Makiaris

REVENUE COLLECTOR
Patricia R. Schneider

TOWN CLERK
Edward J. Friedeberg

SENIOR SERVICES ADMINISTRATOR
Patricia R. Schneider

SOCIAL SERVICES ADMINISTRATOR
Jo-Ann Dom

SUPERINTENDENT OF BUILDINGS
David Sacchitella

SUPERINTENDENT OF SANITATION
Michael J. Bisi

TOWN ATTORNEY
Jean M. D'Aquila

TOWN CLERK
Edward J. Friedeberg

YOUTH AND FAMILY SERVICES DIRECTOR
Edmund J. Meincke

YOUTH SERVICES DIRECTOR
Edmund J. Meincke

Town Officials

Fiscal Year 1996-1997

Elected Officials

BOARD OF EDUCATION
Suzanne Galvin, Chair
Michelle Fontaine, V. Ch.
Richard C. Brown
Helen Stern
Catherine B. Geraci
Paul F. Haas, Jr.
Lewis J. Lassow
Gordon T. Allen

BOARD OF FINANCE
Diane L. Northrop, Chair
Edward B. Dingley
Walter F. Hemlock
James R. McIntosh
Constantine Constantine

BOARD OF ASSESSMENT APPEALS
Shaun O'Rourke
David Motycka
William Holmes
Dennis C. Cavanaugh
Robert Bowden

FIRE COMMISSION
Chandra Stino, Chair
Peter Deich, V. Chair
Gilbert D. Spencer
Norman Fierravanti
Arnold H. Higgins
Brian E. Tyrol

TOWN COUNCIL
Paul M. Nye, Chair
Judith A. Stearns, V. Ch.
Kurt P. Cavanaugh
George M. Purtill
Thomas F. Flanagan
Joe Broder
H. David Megaw
Marti Curtiss
Stephen N. Giamalis

ZONING BOARD OF APPEALS
Michael H. Clinton, Chair
Robert Gamer
John C. Linderman
Sandra O'Leary
Dorothy S. Peltzer
Alternates:
Carl E. Hein
Jeanie Babineau
Matthew Klos

REGISTRAR OF VOTERS
Carolyn Larson
Joan Kemble

Appointed Officials

AGRICULTURAL ADVISORY COMMITTEE
J. Baylis Earle, Chair
Mario Accornero
Louis Bussa
Henry Rose
Richard Ferrari
Deborah McIntosh
Michael Longo

BUILDING BOARD OF APPEALS (Code Rev. Committee)
David B. Cox, Chair
Calvin J. Carini
James W. Dutton
Graham Tyrol
Charles W. Brown

COX CABLE ADVISORY COUNCIL
Peter J. Preisner
Janet Jefford
Vincent A. Fandetti

COMMISSION ON AGING
William McGaw, Jr., Chair
Monica Shea
Audrey Quinlan
Ernest F. Reale
Elizabeth Giamalis
Frank B. Dibble
Richard A. Coombs

COMMUNITY BEAUTIFICATION COMMITTEE
Robert G. Shipman
Donald B. Reid
Della Winans
Lewis Middleton
David Flattery
Elizabeth Lynch
Toni Easterson

CONSERVATION COMMISSION
Edward A. Richardson
Judy Harper
James Bingham
William Patrick
Gerhard R. Schade
Charles J. Reed
John Farley

ECONOMIC DEVELOPMENT COMMISSION
Walter L. Erley, Chair
Robert Mulcahey
B. Kent Sleath
Richard A. Katz
James M. Lynch
David M. Hallows
Nicholas Paindirisi

FAIR RENT COMMISSION
John H. Roughan, Chair
Brian Connors
Frank Giantonio
Andrea Broder
John C. Hilton
Glenda Rose
Kenneth Jacobs

FINE ARTS COMMISSION
Jack Morris
Doris S. O'Rourke
Candace Satin
Carol Ahlschlager
Steven Molaver
Philomena Pappa
Mary Jane Sullivan
Fran Waldman

GREAT POND STEWARDSHIP COMMITTEE
William Reed
David Bodznick
Jollie Steffens
David Gumbart
George Purtill
Tom Mocko
Judy Harper
Marti Curtiss

HISTORIC DISTRICT COMMISSION
Mary Lou Barrett, Chair
Louise Walker
Thomas Theurkauf
E. Marston Moffat
Galen Sheperd
Alternates:
Dennis Pepe
Marcia Olsson
Charles L. Miller

HOUSING CODE OF APPEALS
Nelson C.L. Brown
Kristine Brown
Patricia Moriarty
Michael Botelho

HUMAN RELATIONS COMMISSION
John C. Glezen
Kim McClain
Sandra Hassan
Maureen Shannon
Lisbeth Becker

INCORPORATORS OF THE FREE ACADEMY
Richard Mihm
Helen Stern
Inez Hemlock

INSURANCE ADVISORY COMMITTEE
William Bland
Frank D. Anderson
Robert J. Hager
William A. Fochi
Mark E. Zimmerman
Stephen J. Ludwig
David Hoopes

PUBLIC BUILDINGS COMMISSION
David B. Cox, Chair
W. Michael Low
Edward J. Kamis
Constantine Constantine
Suzanne Galvin
Blakeslee Lloyd
Scott Tyrol
Robert Martino

PUBLIC HOUSING AUTHORITY
James F. Noonan, Chair
Craig Fontaine
Zelda Lessne
Richard H. Inman
Frances W. Young

RECREATION COMMISSION
Betsy Katz, Chair
Lynn Hazard
Jollie Steffens
J. Baylis Earle
Fred Clark, Jr.
Lew Lassow

SAFETY COMMITTEE
Whitney Smith, Chair
Brian Comerford
Gloria Zwirn
Carol Hilton
Helen Litwin
Janet Jefford
John A. Davis, Jr.

TOWN PLAN & ZONING COMMISSION
Dr. Michael F. Lepore, Ch.
Patricia V. Low
Scott Lessne
Barbara A. Nebb
H. Buhl Kent
Mark K. Branse
Alternates:
Jane Sleath
Patricia Bussa
Robert E. Thorne

WELLES-TURNER LIBRARY BOARD
Gloria Avitabile, Chair
Jane Brown
Della Schultz
H. Kennedy Hudner
Blakeslee Lloyd
Martha Poole

YOUTH & FAMILY SERVICES COMMISSION
Stephen Jacoby, Chair
Richard H. King, V. Chair
Shayna Ellovich
Susan Motycka
Tricia Dougherty
Karen Klingensmith
Luci Leone
Cathy Vacchelli
Thomas J. McKee

WATER POLLUTION CONTROL AUTHORITY
Bradley Northrop, Chair
Nils G. Carlson
John C. Gavin
Robert Jordan
William H. Habicht
Louis M. Accornero
Lisa Gilberro

A copy of the current listing of Town Officials is available at:

Town Clerk's Office, Glastonbury Town Hall, 2155 Main Street, Glastonbury, Connecticut 06033

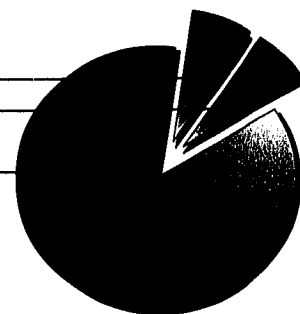
Income Statement

STATEMENT OF REVENUES, EXPENDITURES AND CHANGES IN FUND BALANCE - BUDGET AND ACTUAL - GENERAL FUND FOR THE YEAR ENDED JUNE 30, 1997

	AMENDED BUDGET	ACTUAL	VARIANCE FAVORABLE (UNFAVORABLE)
REVENUES:			
Property Taxes	\$55,112,320	\$54,862,755	\$(249,565)
Licenses and permits	368,300	596,839	228,539
Intergovernmental	3,931,790	4,746,242	814,452
Charges for services	1,132,500	1,317,720	185,220
Other revenues	1,804,930	2,287,606	482,676
Total revenues	\$62,349,840	\$63,811,162	\$1,461,322
EXPENDITURES:			
Current:			
General Government	\$491,721	\$474,669	\$17,052
Community Development	867,998	860,659	7,339
Administrative Services	6,223,196	6,144,712	78,484
Public Safety	5,033,511	4,775,119	258,392
Physical Services	3,436,674	3,247,389	189,285
Sanitation	1,638,745	1,513,226	125,519
Human Resources	1,212,939	1,165,602	47,337
Leisure/Culture	3,235,299	3,123,915	111,384
Contingency	43,730		43,730
Board of Education	39,449,313	39,438,804	10,509
Debt Service	3,282,294	3,278,978	3,316
Total expenditures	\$64,915,420	\$64,023,073	\$892,347
Deficiency of revenues over expenditures	(2,565,580)	(211,911)	2,353,669
OTHER FINANCING SOURCES (USES):			
Operating transfers in	\$1,181,131	\$1,135,001	(\$46,130)
Use of fund balance	2,267,130		(2,267,130)
Operating transfers out	(882,681)	(882,681)	0
Total other financing sources (uses)	\$2,565,580	\$252,320	(\$2,313,260)
Excess of revenues and other financing sources over expenditures and other financing uses		40,409	40,409
Fund balance, July 1, 1996		10,468,200	
Fund balance, June 30, 1997		\$10,508,609	

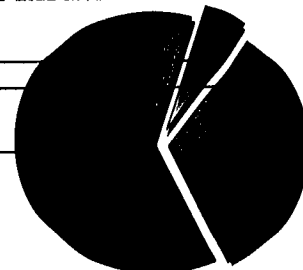
REVENUES

Other: 6.7%
Intergovernmental: 7.4%
Taxes: 85.9%



APPROPRIATIONS & EXPENDITURES

Debt: 5.1%
Town: 33.3%
Education: 61.6%



Balance Sheet

TOWN OF GLASTONBURY GENERAL FUND COMPARATIVE BALANCE SHEETS - JUNE 30, 1997 AND 1996

	1997	1996
ASSETS		
Cash and cash equivalents	\$11,991,577	\$13,178,997
Receivables:		
Property taxes	962,205	1,227,260
Other	522,099	498,117
Inventory	164,763	164,562
Other assets	<u>32,180</u>	<u>7,429</u>
Total assets	\$13,672,824	\$15,076,365
LIABILITIES AND FUND BALANCE		
LIABILITIES		
Accounts and other payables	\$957,409	\$1,186,875
Due to developers for escrow deposits	1,105,180	1,227,173
Due to others for escrow deposits	5,188	
Deferred revenues	<u>1,096,438</u>	<u>2,194,117</u>
Total liabilities	\$3,164,215	\$4,608,165
FUND BALANCE		
Reserved for encumbrances	\$48,701	\$73,781
Reserved for insurance	275,000	275,000
Unreserved:		
Designated for subsequent year's budget	2,600,000	1,850,000
Designated for specific purposes	525,769	378,703
Undesignated fund balance	<u>7,052,139</u>	<u>7,890,716</u>
Total fund balance	\$10,508,609	\$10,468,200
Total	\$13,672,824	\$15,076,365

A copy of the complete financial report is available at:
Town Clerk's Office, Glastonbury Town Hall, 2155 Main Street, Glastonbury, Connecticut 06033

1998 Meeting Calendar

BOARD OF EDUCATION

7:30 p.m., Town Council Chambers

Jan. 12	May 11	Sept. 28
Jan. 26	May 18	Oct. 5
Feb. 9	June 8	Oct. 26
Feb. 23	June 22	Nov. 9
Mar. 9	July 13	Nov. 23
Mar. 23	Aug. 24	Dec. 7
Apr. 6	Sept. 14	Dec. 21
Apr. 27		

BOARD OF FINANCE

7:30 p.m., Meeting Room at Town Hall

Jan. 20	May 19	Oct. 20
Feb. 17	June 16	Nov. 17
Mar. 17	Aug. 18	Dec. 15
Apr. 21	Sept. 15	

COMMISSION ON AGING

7:00 p.m., Glastonbury Senior Center
17 Hebron Avenue

Jan. 12	May 18	Oct. 19
Feb. 9	June 15	Nov. 16
Mar. 16	Sept. 21	Dec. 21
Apr. 20		

COMMUNITY BEAUTIFICATION COMMITTEE

7:30 p.m., Meeting Room at Town Hall

Jan. 14	May 13	Sept. 9
Feb. 11	June 10	Oct. 14
Mar. 11	July 8	Dec. 9
Apr. 8	Aug. 12	

CONSERVATION COMMISSION

7:30 p.m., Town Council Chambers

Jan. 15	May 14	Sept. 10
Jan. 29	May 28	Sept. 24
Feb. 26	June 11	Oct. 15
Mar. 12	June 25	Oct. 29
Mar. 26	July 16	Nov. 12
Apr. 16	Aug. 13	Dec. 10
Apr. 30		

ECONOMIC DEVELOPMENT COMMISSION

7:30 p.m., Office of Community Development

Jan. 5	May 4*	Sept. 14
Feb. 2	June 1	Oct. 5
Mar. 2	July 6	Dec. 7
Apr. 6	Aug. 3	

* Meeting at Town Council Chambers

FIRE COMMISSION

7:30 p.m., Meeting Room at Town Hall

Jan. 8	May 14	Sept. 10
Feb. 12	June 11	Oct. 8
Mar. 12	July 9	Nov. 12
Apr. 9	Aug. 13	Dec. 10

HOUSING AUTHORITY

5:45 p.m., Herbert T. Clark House
45 Canione Road

Jan. 21	May 20	Sept. 16
Feb. 18	June 17	Oct. 21
Mar. 18	July 15	Nov. 18
Apr. 15	Aug. 19	Dec. 16

1998 Meeting Calendar

LIBRARY BOARD

7:00 p.m., Director's Office at the Library

Jan. 19	May 18	Oct. 19
Feb. 17	June 15	Nov. 16
Mar. 16	July 20	Dec. 21
Apr. 20	Sept. 21	

PLANNING & ZONING COMMISSION

7:00 p.m., Town Council Chambers

Jan. 6	Apr. 21	Aug. 18
Jan. 20	May 5	Sept. 15
Feb. 3	May 19	Oct. 6
Feb. 17	June 2	Oct. 20
Mar. 3	June 16	Nov. 17
Mar. 17	July 7	Dec. 1
Apr. 7	July 21	Dec. 15

PUBLIC BUILDINGS COMMISSION

7:00 p.m., Meeting Room at Town Hall

Jan. 7	May 6	Sept. 2
Feb. 4	June 3	Oct. 7
Mar. 4	July 1	Nov. 4
Apr. 1	Aug. 5	Dec. 2

RECREATION COMMISSION

7:30 p.m., Parks and Recreation Office

Jan. 5	May 4	Oct. 5
Feb. 2	June 1	Nov. 2
Mar. 2	July 6	Dec. 7
Apr. 6	Sept. 14	

TOWN COUNCIL

7:30 p.m., Town Council Chambers

Jan. 13	May 12	Sept. 8
Jan. 27	May 26	Sept. 22
Feb. 10	June 9	Oct. 13
Feb. 24	June 23	Oct. 27
Mar. 10	July 14	Nov. 10
Mar. 24	July 28	Nov. 24
Apr. 14	Aug. 25	Dec. 8
Apr. 28		

WATER POLLUTION CONTROL AUTHORITY

7:30 p.m., Town Council Chambers

Jan. 14	May 13	Aug. 26
Jan. 28	May 27	Sept. 9
Feb. 11	June 10	Sept. 23
Feb. 25	June 24	Oct. 14
Mar. 11	July 8	Oct. 28
Mar. 25	July 22	Nov. 18
Apr. 8	Aug. 12	Dec. 9
Apr. 22		

YOUTH & FAMILY SERVICES COMMISSION

7:30 p.m., 321 Hubbard Street

Jan. 14	May 13	Oct. 14
Feb. 11	June 10	Nov. 11
Mar. 11	Sept. 9	Dec. 9
Apr. 8		

ZONING BOARD OF APPEALS

7:30 p.m., Town Council Chambers

Jan. 5	May 4	Sept. 14
Feb. 2	June 1	Oct. 5
Mar. 2	July 6	Nov. 2
Apr. 6	Aug. 3	Dec. 7

1998 Community Calendar

Community Events

APPLE HARVEST FESTIVAL

Oct. 17-18

CHILDREN'S HOLIDAY PERFORMANCE

11 a.m., GHS Auditorium

Jan. 19 Feb. 18 Apr. 14

FRIENDS OF WELLES-TURNER LIBRARY APPRAISAL DAY

Mar. 14

FRIENDS OF WELLES-TURNER LIBRARY BOOK SALE

May 16 Sept. 12

FUN RUNS

6:30 p.m., GHS

June 30 July 21 Aug. 4
July 7 July 28 Aug. 11
July 14

KID'S DOG SHOW

6:00 p.m., Hubbard Green

Pre-registration required

July 6 (Raindate - July 7)

LIBRARY WEEK AND WEEK OF THE YOUNG CHILD

Apr. 19-25

SANTA'S RUN 3.5 MILE RUN

Noon, GHS, Dec. 6

(Snowdate: Sunday, Dec. 13)

SENIOR PICNIC

Hubbard Green

Aug. 12

SUMMER MUSIC SERIES

7:00 p.m., Hubbard Green

July 8 July 15 July 22

TOWN BAND CONCERT

7:00 p.m., Hubbard Green

June 28 July 19

July 12 July 26

Dates To Remember

DAYLIGHT SAVINGS HOURS AT TRANSFER STATION

Apr. 8: Wednesdays 7:00 am-7:00 pm

Sept. 16: Wednesdays 7:00 am-6:00 pm

Oct. 21: Last day of Daylight Savings hours

FISHING SEASON OPENS

Apr. 18

ELDERLY PROPERTY TAX RELIEF

Last day for filing with assessor: May 15

DOG LICENSES

June 1

FIRST INSTALLMENT OF TAXES

Due July 1

HUNTING SEASON OPENS

Oct. 17

SEWER USE PAYMENTS DUE

Nov. 1

Assistance Programs

ENERGY ASSISTANCE

Application period begins Oct. 1

Last day to apply: Mar. 16

OPERATION FUEL BENEFITS

Application period begins: Dec. 1

Last day to apply: May 29

RENTER'S REBATE PROGRAM

Application period begins: May 15

Last day to apply: Sept. 15

THANKSGIVING FOOD BASKETS

Distributed Nov. 24 (tentative)

ANNUAL TOY SHOP

Dec. 16 and 17 (tentative)

Telephone Directory

TOWN OFFICIALS

FOR INFORMATION	CALL	PHONE
Accounts Payable	Accounting	652-7595
Administration	Town Manager	652-7500
Assessment	Assessor	652-7600
Assessment	Info Line	652-7606
Birth Certificates	Town Clerk	652-7616
Building Permits	Building Office	652-7521
Bulky Waste Disposal	Sanitation	652-7772
Children's Department	Welles-Turner Library	652-7718
Civil Preparedness	Civil Preparedness	652-7576
Death Certificates	Town Clerk	652-7616
Deeds	Town Clerk	652-7616
Demolition Permits	Building Office	652-7521
Dial-A-Ride	Senior Services	652-7643
Dog Licenses	Town Clerk	652-7616
Dog & Animal Problems	Animal Control Officer	633-8301
Drainage Problems	Engineering	652-7735
Electrical Permits	Building Office	652-7521
Elderly Municipal Agent	Senior Services	652-7642
Energy Assistance	Social Services	652-7638
Engineering	Engineering	652-7735
Financial Administration	Administrative Services	652-7586
Financial/Medical Assistance	Social Services	652-7638
Fire Chief	Fire Department	652-7555
Fire Emergencies	Police Department	911
Fire Marshal	Fire Marshal	652-7526
Health Matters	Health Department	652-7534
Highways	Highway Superintendent	652-7749
Housing Authority/Commission	Housing Authority	652-7568

FOR INFORMATION	CALL	PHONE
Inland Wetlands	Community Development	652-7510
Landfill Permits	Engineering	652-7735
Library	Welles-Turner Library	652-7719
Reference Department	Welles-Turner Library	652-7720
Marriage Licenses	Town Clerk	652-7616
Nursing	Visiting Nurse Association	633-3521
Passport Information	Probate	652-7630
Personnel	Human Resources/Personnel	652-7501
Planning	Community Development	652-7510
Plumbing & Heat Permits	Building Office	652-7521
Police & Fire Emergencies	Police Department	911
Police (General Information)	Police Department	633-8301
Probate Court	Probate Clerk/Judge	652-7631
Recreation	Recreation Department	652-7679
Recreation Schedules/Cancellations	Info Line	652-7689
Refuse Disposal/Recycling	Info Line	652-7790
Refuse Disposal/Recycling	Office	652-7772
Registration of Voters	Registrar of Voters	652-7627
Sanitary Inspection	Health Department	652-7534
Senior Center	Senior Services	652-7642
Sewer Use Bills	Sanitation	652-7772
Snow Removal & Streets	Highway Superintendent	652-7749
Taxes	Collector of Revenue	652-7614
Taxes	Info Line	652-7606
Trees	Parks and Recreation	652-7679
Voting	Registrar of Voters	652-7627
Water Pollution Control	Sanitation	652-7772
Youth & Family Services	Youth & Family Services	652-7661

BOARD OF EDUCATION

CENTRAL OFFICE	CONTACT PERSON	PHONE	Vocational Education	Katherine Brophy	652-7249
Superintendent of Schools	Jacqueline Jacoby	652-7961	Guidance Department/Director	Virginia Gordon	652-7211
Assistant Superintendent	Edward Schofield	652-7965	Special Education	Catherine Colavecchio	652-7971
Business Manager	Sharon Smith	652-7941	Special Education	Gary Nolf	652-7971
Food Services Director	Brad Devlin	652-7948	Glastonbury High School	Alan Bookman	652-7204
Transportation/Communication	Rita Gagnon	652-7951	Principal	Thomas Russo	652-7800
CURRICULUM	DIRECTOR	PHONE	Gideon Welles School	Thomas Russo	652-7800
Art	Daniel Roach	652-7954	Principal	Thomas Russo	652-7800
Athletics	Raymond Nicolletta	652-7234	Academy School	Carol Sue Schmidt	652-7835
English	Richard Dlugos	652-7967	Principal	Carol Sue Schmidt	652-7835
Foreign Language	Christine Brown	652-7954	Buttonball School	Patricia DaSilva	652-7276
Math	Michael Landry	652-7967	Principal	Patricia DaSilva	652-7276
Music	Leslie Hunt	652-7954	Eastbury School	William McDermott	652-7858
Physical Education/Health	Basil Roberts	652-7253	Principal	William McDermott	652-7858
Science	Kenneth Roy	652-7250	Hebron Avenue School	Gina Vance	652-7875
Social Science	Deborah Willard	652-7967	Principal	Gina Vance	652-7875
			Hopewell School	Richard DeBellis	652-7897
			Principal	Richard DeBellis	652-7897
			Naubuc School	D. Patricia Hatch	652-7918
			Principal	D. Patricia Hatch	652-7918

FIRE & POLICE EMERGENCY
911

ROUTINE CALLS POLICE DEPARTMENT
633-8301

Design: The Bayberry Design Company, LLC, Salem, Connecticut
Printing: Hitchcock Printing and Distribution Services, New Britain, Connecticut



Printed on recycled paper