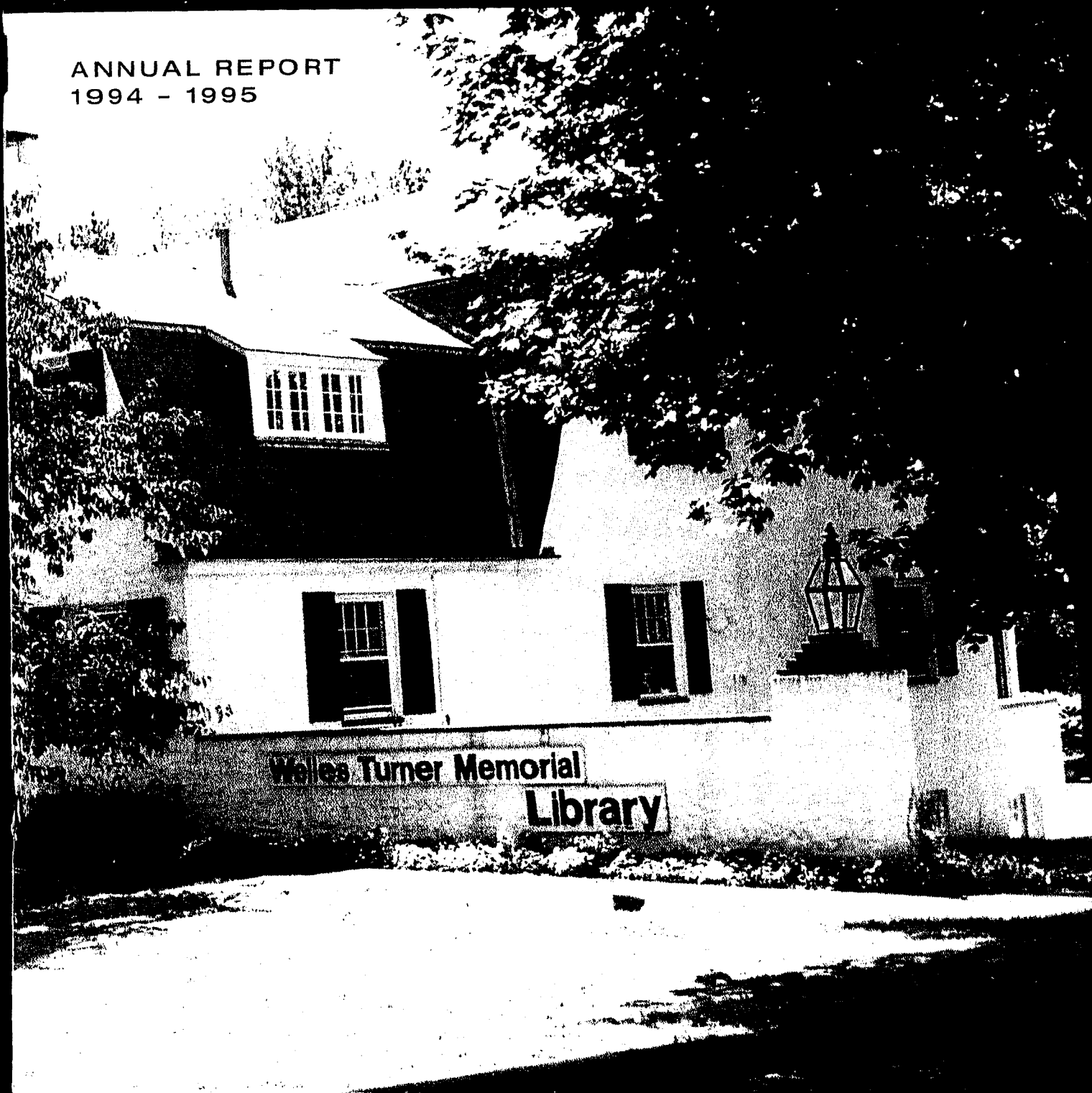


THE GLASTONBURY STORY

ANNUAL REPORT
1994 - 1995



Building on over 300 years of tradition and heritage, Glastonbury continues to balance the preservation of its natural resources with the evolving needs of our community.

Through positive community partnerships, careful planning, and professional management, we are committed to the highest levels of responsive and equitable service, integrity, and fiscal responsibility.

Ongoing innovation, regional cooperation, and effective leadership will ensure that Glastonbury will always be a great place to live, learn, work and do business.

LOCATION

Glastonbury is located ten miles southeast of Hartford, southerly of Route 3 and easterly of the Connecticut River and Interstate 91. It is served by the Hartford County Regional Planning Agency and the Capitol Region Council of Governments.

AREA

52.5 square miles, 33,600 acres.

LAND USE

Principally residential (approximately 60% of land area) with suburban to rural densities, compact commercial/employment district (approximately 15%) and significant open space comprising of water company, State forest and Town lands (25%).

POPULATION

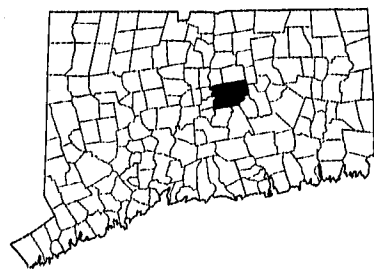
Approximately 29,000

FORM OF GOVERNMENT

Town Council, Town Manager, Board of Finance

TOWN HALL

21.55 Main Street, Glastonbury, Connecticut 06033, located one quarter mile south of Hebron Avenue on the west side of Main Street.



NET GRAND LIST

On October 1, 1994: \$1,504,115,422

TAX RATE

35.2 mills July 1995

NUMBER OF VOTING DISTRICTS

Eight

STATE REPRESENTATIVES

Sonya Googins (R) 240-8700
Richard Veltri (R) 240-8700

STATE SENATOR

Paul R. Munns (R) 240-8800

U.S. CONGRESSWOMAN

Barbara Kennelly, 278-8888

U.S. SENATORS

Joseph Lieberman, 240-3566
Christopher Dodd, 240-3470

1998 GOVERNMENT

Town Manager: Richard J. Johnson
Town Council: Paul M. Nye, Chairman;
Judith A. Stearns, Vice Chairman
Joe Broder
Kurt P. Cavanaugh
Marti Curtiss
Thomas F. Flanagan
Charles L. Monaco
George M. Purtil
H. David Megaw

On the Cover:
Welles-Turner Memorial Library



Paul M. Nye
Chairman

The citizens of Glastonbury can reflect with pride on a year of accomplishments, anniversaries and planning for the future. We celebrated the completion of the Addison Park swimming pool, a testimonial to cooperation, compromise and commitment of local and state resources. While economic uncertainty continues to be a factor in the region, Glastonbury acquired nearly 100 acres of commercial land in the Gateway office park providing the opportunity for a long-term plan for the town's economic tax base. Other land acquisitions continued along the riverfront for future generations to enjoy.

Continuing with the planning theme, the Town Plan and Zoning Commission completed and adopted revisions to the Plan of Development to provide a resource for sound land use practices to take Glastonbury into the next century, striving for the delicate balance of land preservation and managed growth.

Planning is well underway for the town's first community center, with facilities and programs to serve all of our citizens. Funding has been provided to prepare plans and accurate cost estimates as well as a process to solicit input from the community in order to construct a center within budget and to meet the needs of a diverse population.

The Welles-Turner Library Second Century Fund was conceived and implemented to raise significant private funds to supplement a future referendum for needed expansion of Glastonbury's library facilities.

Fiscal responsibility, one of Glastonbury's trademarks, continued to be a priority for the town as the Council and Town Manager worked closely to meet the service needs of a growing community while the Board of Finance kept the mill rate "in check", a rate which is actually lower than when the current council took office in 1993! At the same time, the Council made an important policy decision to increase funding of the capital improvement program to set aside funds in a methodical, annual approach to meet the long-term needs of the community. The cooperative spirit between town staff and the Town Council was amplified further in a joint mission and objectives workshop which brought policy and administration together to develop common goals and a plan for their implementation.

Several anniversaries were celebrated this year, including 25 years of Youth and Family Services providing more than a generation of help, support and encouragement to young people and their families, and 20 years of "Glastonbury A Better Chance" providing educational opportunities to inner city minority students who take from our community an excellent high school education and who leave with us a part of themselves to enrich our lives with their diversity. Glastonbury served as host to a special group of people, the Special Olympic Athletes from Ireland, who inspired us with their enthusiasm and love of life.

Educational needs, one of a community's fundamental building blocks, remained a high priority for the town as planning and preparation for a September referendum for funds necessary to complete our elementary school projects were completed. The Council and Board of Education adopted Glastonbury's suggestions to meet the challenges of quality and diversity issues facing the region in which we live, work and raise our families.

This is my first annual report and I am honored to have the opportunity not only to serve on the Town Council but to have the privilege to serve as chairman for the past four months. As I've said time and again, what makes Glastonbury special are the people. People who volunteer their time, talent and energy in the various community organizations throughout the town are the true threads which hold the fabric of our community together.

Paul M. Nye
Chairman, Glastonbury Town Council



1994-1995 Town Council: William M. Dufford, Judith A. Stearns, Sonya F. Googins, Kurt P. Cavanaugh, Joe Broder; Back row: Charles L. Monaco, Thomas F. Flanagan, Paul M. Nye, George M. Purtil and H. David Megaw.



Richard J. Johnson
Town Manager

The 1994-1995 Annual Report presented on the following pages summarizes the many accomplishments and successes of the Town of Glastonbury for the fiscal year ended June 30, 1995. I am pleased to have the opportunity to highlight several of the numerous achievements and activities of the past year.

- Established Town Hall Information Center. The combined citizen information/switchboard center improves customer service and reduces ongoing costs.
- Continued to balance full-time staffing levels with service delivery needs. Full-time staffing has been reduced by 25 positions, or approximately 10% since 1990-1991 including 8 positions in the past year.
- Created Information Systems & Technology Coordinator position which enables Glastonbury to keep pace with management information system opportunities.
- Joined multi-town committee for construction of a regional Household Hazardous Waste Collection Facility. To be constructed in Manchester and funded by a DEP grant, Glastonbury residents will have access to the facility 16 days annually.

Efforts continue to maintain a stable tax rate. The 1995-1996 Operating Budget, adopted in March, achieved this goal by requiring a minimal tax increase of 2/10ths of a mill to 35.2 mills. Despite this tax increase, the 1995-1996 mill rate remains 5/10ths of a mill below the 35.7 rate established in 1991-1992. For the second time in recent history, the Town's Operating Budget decreased from the prior year while program and service delivery levels were maintained and improved. The 1995-1996 Town Operating Budget is approximately \$117,000 less than adopted for fiscal year 1993-1994.

Grand List growth continues at a modest but favorable rate in comparison with many Connecticut municipalities. The 2.83% increase effective October 1994 generated approximately \$1.45 million in new tax revenue. The 2.5% average Grand List growth experienced in the past five years compares favorably with surrounding municipalities.

As noted in prior reports, the community's many infrastructure maintenance and improvement needs are funded through the Capital Reserve Fund. Each year funding for Debt Service and ongoing projects is considered carefully by the Board of Finance and Town Council.

The 1995-1996 Debt Service and Capital Reserve Fund transfer is funded at its highest level in recent years. This appropriation confirms Glastonbury's commitment to a successful Capital program and helps ensure continued investment in the Town's infrastructure. A number of projects completed and initiated in the past year are highlighted below.

- Completed construction of the Addison Park Swimming Pool on schedule and within budget. Approximately 40% of the \$800,000 project budget will be reimbursed to the Town through a State DEP grant.
- Finalized High School and Eastbury School re-roofing projects. Roof replacement at Hopewell and Buttonball Schools scheduled for Summer 1995.
- Received grant approval for reconstruction of Main Street between School Street and Naubuc Avenue, and re-alignment of the Hebron Avenue/Keeney Street intersection. Both projects expected to receive 100% funding under the Federal Surface Transportation Program.
- Funded Fire Department communication system improvements and Public Safety Data System. Both projects will significantly improve emergency service capabilities and effectiveness.

The Town's financial picture continues to be very bright. Fiscal year 1994-1995 ended on a positive note with a \$2,064,332 increase in Fund Balance. At June 30, 1995, the Town's Undesignated Fund Balance totals \$7,082,640 compared with \$5,468,941 in 1994. As noted in prior years, the careful use of Fund Balance, in conjunction with sound fiscal management, will help the Town maintain a steady tax rate in the years to come.

Looking ahead to 1995-1996, a busy and productive year is forecast. Challenges include completion of the elementary school renovation and expansion project, proposed expansion of the Welles Turner Memorial Library, construction of a Community/Senior Center, and Gateway Corporate Park economic development opportunities. With the successes and accomplishments of past years, I am confident that Glastonbury is well positioned to meet these and all other challenges in the years ahead.

As I conclude this report, I want to express my sincere thanks and appreciation to the staff, boards and commission members, residents and others who consistently dedicate their time, efforts and talents on behalf of the community. Without their collective efforts, the successes and accomplishments highlighted throughout this Annual Report would not be possible.

Richard J. Johnson, *Town Manager*



Donald L. Hamer
Judge of Probate



William S. Rogers
Town Attorney

PROBATE COURT

The Probate Court for the District of Glastonbury provides a broad range of services to citizens of Glastonbury in accordance with its mandates under the Connecticut General Statutes. These include services to mentally ill and incapable adults as well as adults with mental retardation; guardianship of the estate and person of minors; termination of parental rights; adoptions; paternity matters; changes of names; marriage waivers; decedents' estates; trust estates; and performance of marriages. The court also processes passport applications.

During the past year we began integrating our trained volunteer visitors into the services provided to citizens who have conservators appointed by the Court. Visitors are assigned to those persons most in need of protection and/or supportive services.

As the 1995 fiscal year drew to a close, the Court added the services of a second part-time clerk. The additional staff is necessary to address the large demand for passports and matters relating to children, as well as to coordinate the review hearings which are required for all cases except decedents' estates every three years.

Donald L. Hamer
Judge of Probate

TOWN ATTORNEY

As I look down the list of pending Court matters which include Affordable Housing Appeals (3); Zoning Appeals (3); Tax Appeals (3); Foreclosures (14); Appeals from Freedom of Information Commission decisions in the Town's favor (8); and Injunction actions (1 pending, 1 proposed); and the various major matters (School Renovations, Community (Senior) Center, tax collections); it occurs to me that I could bore you with "update" descriptions, or I could write about a subject that I've talked about with many of you. I chose the latter.

"THE FIRST THING WE DO,
LET'S KILL ALL THE LAWYERS"
King Henry VI, Shakespeare

So said the rebellious Jack Cade as he advocated anarchy. So, in effect, say all when confronted with the volume and substance of the kind of claims we have to deal with in today's bizarre world. Unfortunately the Town enjoys no exemption.

What must first be recognized and understood is that the Town of Glastonbury, with 29,000 residents, a Grand List of properties valued at \$1.3 billion, and a budget of \$57.3 million, is the biggest, most complex "business" in Town. It necessarily has and is daily confronted with all of the problems of a large corporation. In addition, it has the duty to comply with and enforce a multitude of mandated Federal, State and Local programs and laws covering education, police and fire protection; public health and safety; waste and sewerage disposal; land use and the environment, such as commercial, housing and economic development; inspection, construction and maintenance of public buildings and 197 miles of town roads; assessment and collection of taxes, fees and charges; and programs for youth, disabled and elderly just to name a few of the more high profile functions.

The Town also has its own labor and employment, tax, banking, investment, recruitment and training, public information, motor vehicle and equipment purchase and maintenance activities and difficulties, just like any business or corporation.

Except for legal actions to enforce laws and regulations or collect delinquent taxes, the Town is always an unwilling defendant. All of this is now aggravated by the fact that people are more confrontational and more angry with more things than they were, say, in 1950, when our population was only 8,900 people.

No one wishes we could simply turn back time to the happy fifties more than Town officials and elected and appointed representatives. That cannot happen, so we all have to deal with a changed world, nation, state and town as prudently and effectively as we can.

If you are concerned, as we all are, about the cost of legal advice and litigation, then the better place to direct your concern is at the people who cause it. Look to the instigators rather than the defenders.

William S. Rogers, Tyler Cooper & Alcorn
Town Attorney



Jacqueline Jacoby
Superintendent
of Schools



Suzanne Galvin
Board of Education
Chairperson

The Glastonbury Board of Education is responsible for setting the educational policies and priorities for the 5,300 students enrolled in our school system. The 1994-95 school year continued to be marked by significant growth in the student population. Over 300 new students enrolled and projections for future student growth indicate that the system will have more than 6,000 students before the decade ends. The school system grew in many other ways as well. A description of issues, initiatives and accomplishments follows.

SPACE NEEDS

After the bond approval in 1993, educational specifications for code compliance, renovation, expansion of core facilities, and additional classroom space were finalized. Architectural planning and the State Department of Education Building Review have been completed for the project. When it became evident that the project could not be completed within the approved funding, a referendum for additional funds for the elementary building project was planned for September, 1995. Because of overcrowding at Buttonball Lane School and Hopewell School, the school system leased instructional space at High Street School. The Middle School Task Force reviewed space and facility options in anticipation of increased student enrollment in the middle grades. Additional preliminary planning was done to prepare for increasing student enrollment at Glastonbury High School.

TECHNOLOGY

Several substantive improvements in technology were made in the schools. Glastonbury High School's mathematics laboratory was updated with DOS platform and networked computer work stations. A complete Mac laboratory was installed within the library media center at Academy School. Each of the twenty-five computers has full CD-ROM capability. All of the elementary schools increased their computer capabilities and every school utilized telecommunications to supplement and enrich the current curriculum. In addition, a computerized Teacher Substitute System was initiated and will go

into effect during the 1995/96 school year. Each of the school library media centers has begun to move to an automated system. All schools also have active research and telecommunication activities which support the curriculum in the classroom. Additional training has been given to the teaching staff in a wide variety of technology related subjects. The Technology Committee, a group comprised of staff, parents, community members, and private sector experts in technology met throughout the year to design a long term plan for technology in the school system.

CURRICULUM AND INSTRUCTION

Gideon Welles' move towards middle school restructuring of the seventh grade was highly successful. The core teams have increased interdisciplinary instruction, more consistency and contact with students and substantively greater parent communication. The K-8 staff was involved in a comprehensive analysis of the Connecticut Mastery Tests and their alignment with our curriculum. This was done in conjunction with the Curriculum Reviews in Language Arts and Mathematics. The Foreign Language Curriculum Review Committee recommended and the Board of Education authorized an increased commitment to foreign language instruction in the elementary schools. Beginning in the fall of 1995, daily Spanish instruction will begin in the second grade. The PACE program for gifted and talented elementary school students expanded with the addition of one teacher to the PACE staff.

THE MAGNET SCHOOL

The cooperative effort between East Hartford and Glastonbury to create a Science and Global Studies elementary magnet school continues to grow. Three competitive state and federal grants supported the further development of the magnet school program.

EFFICIENCY AND PRODUCTIVITY

In addition to the cost containment strategies outlined in the budget process, the district has explored the possibility of establishing an educational foundation and continued to seek competitive state and federal grants. In addition, the district has computerized and streamlined a number of system wide operations and procedures.

THE FUTURE

The Strategic Planning Process will be completed and the district will continue to focus on facility needs, technology, and curriculum and instruction during the 1995-96 school year.

The Administrative Services Department is responsible for the preparation of budgets, financial reporting, recording land records, property assessment, management of collection of taxes and sewer use fees. Others include: the administration of acquisition of goods and services, insurance procurement, legal services, debt sales, voter registration management and coordination of computer services.

BOARD OF FINANCE

The Board of Finance is a bipartisan board which operates in partnership with the Town Council and the Board of Education. In its advisory role, the Board recommends an annual budget to the Town Council and recommends and/or authorizes transfers among and between accounts and funds during the fiscal year. By direct authority the Board establishes the annual mill rate of taxation after reviewing the final budget that has been approved by the Town Council.

FINANCIAL ADMINISTRATION

The office coordinates the preparation of the operating and capital improvement budgets for the Town Manager. The staff works with the Board of Finance to review financial reports and make recommendations as requested to the Town Council and Town Manager. This office serves as staff liaison to the Insurance Advisory Committee in risk analysis and annual insurance renewals.

- Held two bond anticipation note sales to finance design and construction of the pool and elementary schools.
- Revised the format of the 1995-1996 adopted budget in order to meet the standards set by the Governmental Finance Officers Association and more importantly, make its listings of programs, services and accomplishments more understandable for the citizens.

ACCOUNTING

The Accounting Division is responsible for providing complete and accurate financial information in proper form on a timely basis. This division prepares the year end comprehensive annual financial report, processes employee payroll, payables, and receivables. The division is also responsible for investment management procedures to maximize interest income on all funds and internal audit functions to insure that proper controls and procedures are being followed.

- Received the Government Finance Officers Association Certificate of Excellence in Financial Reporting for the period ended June 30, 1994.
- Implemented direct deposit of payroll checks to increase efficiency in the check reconciliation process.

REVENUE COLLECTION

The Collector of Revenue's office is responsible for the timely collection of funds necessary to support both governmental and educational services. Those funds account for over 85% of the Town's annual budget. Taxes and fees for the fiscal year 1994-1995 totalled \$52,998,414 and sewer charges and fees totalled \$1,559,393.

- Completed foreclosure of a 90 acre commercial parcel of land known as Gateway Corporate Park.
- Collected back taxes totalling \$1.5 million.
- Utilized an outside collection agency to assist in collection of suspended accounts resulting in the collection of \$7,200.
- Accomplished a tax collection rate of 98.4% on current levy.
- Worked with Town Attorney and succeeded in collecting on 28 delinquent accounts totalling \$257,131.

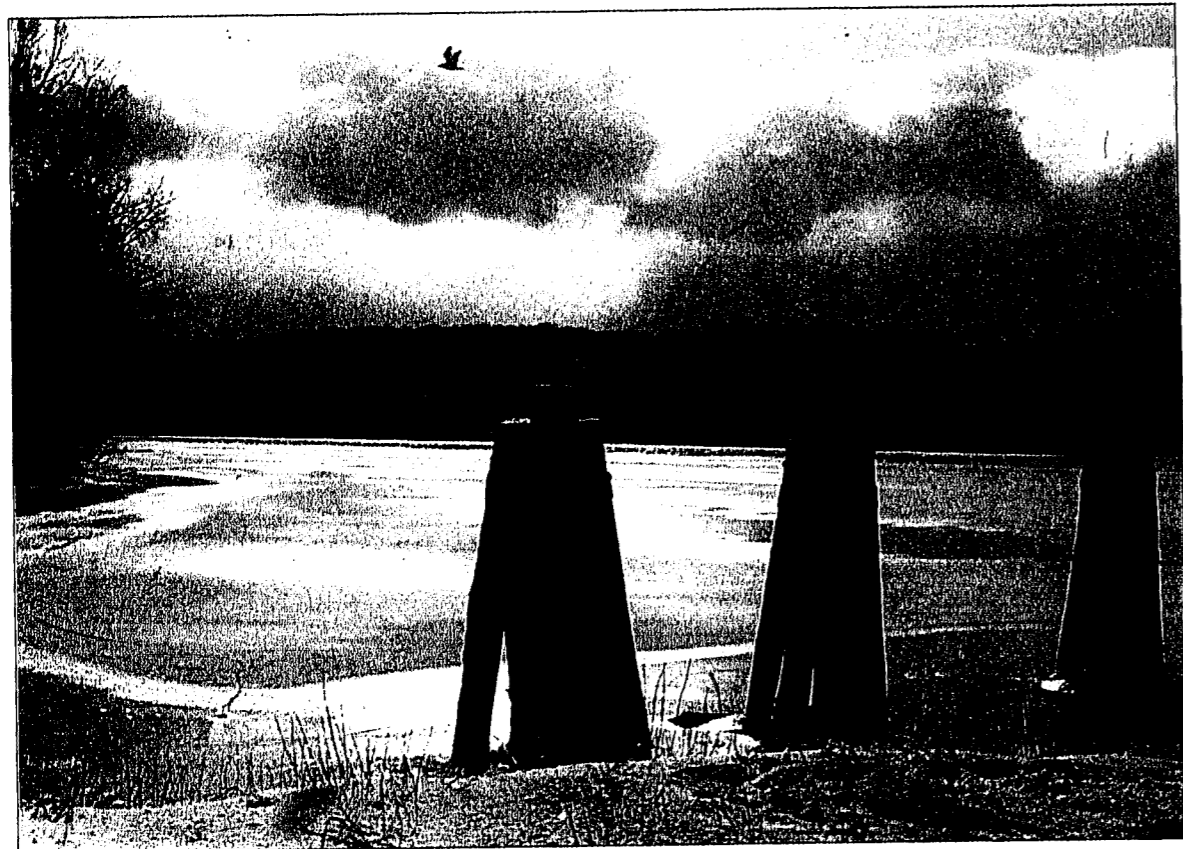
PROPERTY ASSESSMENT

The Property Assessment Division administers an ad valorem tax program in compliance with State Statutes. It compiles the annual Grand List of taxable and exempt property including the valuation and revaluation of real estate, motor vehicles and business personal property.

- Continued decennial town-wide revaluation project for October 1, 1995 Grand List: finalized data base, instituted Computer Assisted Mass Appraisal (CAMA) training, completed data collection, initialized valuation schedules and valuation review.
- Finalized office layout to accept CAMA system and to improve internal office operation as well as customer service.

TOWN CLERK

The Town Clerk's office is the center for public records and information including land records, vital statistics, elections, military discharges, notaries public, liquor permits, minutes of the numerous boards and commissions, and various licenses. A new computer system was installed in April bringing the land record index on line for the first time. The index from 1973 to the present can now be accessed by computer.



Ferry Landing

HOUSING AUTHORITY

The Housing Authority currently administers a total of 439 assisted dwelling units within the Town of Glastonbury. These include the following housing developments: Welles Village; Center Village; Village Green; Herbert T. Clark House; Hale Farms; Section 8.

- Continued Welles Activity Council for Youth (W.A.C.Y.), in conjunction with the Town's Department of Youth and Family Services. Through a cooperative effort of the Housing Authority, the Town's Department of Youth and Family Services, and the Glastonbury Police Department, the teen youth of Welles Village organized a youth basketball league.
- Installed a new computer system to better track information and comply with state and federal requirements.
- Revised application procedures to increase screening efforts and evaluate new residents prior to admission.
- Increased cooperative efforts with the Glastonbury Police Department to prevent crime and improve security for residents.

- Assisted the Welles Village Residents with their tenant council which provides services to the residents in Welles Village.
- Provided night security at Herbert T. Clark House, to provide better coverage during the night hours.

The Fair Rent Commission is responsible for adjudicating complaints related to rents, particularly "harsh and unconscionable increases" in rents to tenants. The Secretary receives and mediates telephone and written complaints, and makes recommendations to the Commission if a mediation is not possible. The Commission is the final arbiter of fair rent complaints.

Due to the current state of the rental market, the Fair Rent Commission has heard few complaints. These have been in the following areas:

- Failure of the landlord to refund security deposits.
- Landlord building and health violations.
- Tenant's legal position on breaking their lease due to financial hardship.
- Landlord harassments due to tenant's violation of the lease.

JANUARY

SUNDAY	MONDAY	TUESDAY	WEDNESDAY	THURSDAY	FRIDAY	SATURDAY
	1 NEW YEAR'S DAY MUNICIPAL OFFICES CLOSED Tax Payments Due	2 Planning and Zoning Recreation Commission	3 Public Buildings Commission	4	5	6
7	8 Zoning Board of Appeals Economic Development Commission Board of Education Fine Arts Commission	9 Town Council	10 Youth and Family Services Commission Community Beautification Committee Water Pollution Control Authority	11 Fire Commission Conservation Commission	12	13
14	15 MARTIN LUTHER KING DAY MUNICIPAL OFFICES CLOSED Children's Holiday Performance 6:15-11 am	16 Board of Finance Planning and Zoning	17 Local Emergency Planning Committee Housing Authority	18	19	20
21	22 Commission on Aging Welles-Turner Library Board Board of Education	23 Town Council	24 Water Pollution Control Authority Fair Rent Commission	25 Conservation Commission Annual Town Meeting 6:15-7:30 pm	26	27
28	29	30	31			

Call Town Clerk's Office at 652-7616 to verify meeting dates, times, and locations.

1996



Winter in East Glastonbury

PARKS AND RECREATION

Providing recreational and cultural opportunities is one of the basic responsibilities of local government. Town sponsored activities and public open space, parks, and recreation facilities work together to meet the diverse needs of the community and its members. These services, provided through the Recreation and Fine Arts Commissions and the Parks and Recreation Department continue to be among the most popular and utilized services provided for Glastonbury residents.

- The new outdoor swimming pool, located in Addison Park, opened on June 24. The pool will host children's swim lessons, swim team, recreation swim and adult lap swimming. Approximately 20,000 visitations for recreation swim and 400 children's swim lessons are anticipated.
- With favorable weather conditions and by working in conjunction with the Highway Department, 30.26 miles of street tree trimming was completed along Town roadsides and sidewalks. The work helps improve sight lines, eliminates hazardous limbs and trees, and improves sidewalk and street clearances.
- With financial support from the Glastonbury

Gymnastics Club Parents Organization and Naubuc School PTO, new portable bleachers were installed in the Naubuc School gym for use by the gymnastics program and school functions.

- The tennis lesson program was revised by adding children's lessons to the evening schedule. A total of 48 children participated.
- The Fine Arts Commission sponsored two outdoor concerts on the Hubbard Green: The Hartford Pops and the Mark Small Jazz Quartet. Both events were attended by several hundred residents.
- The main entrance to Town Hall received a 'facelift' with the installation of a new flagpole and park benches; expansion of the brick walk; and new landscaping, including a perennial flower bed.
- With funding provided by the Small Business Association Tree Planting Initiative, 112 trees were planted on various Town properties.
- With financial support from the Little League, the diamond at the Junior High was converted from a softball field to a baseball field. Work was completed in the Fall 1994, so that the Spring 1995 season was not adversely affected.

F E B R U A R Y

SUNDAY	MONDAY	TUESDAY	WEDNESDAY	THURSDAY	FRIDAY	SATURDAY
				1	2	3
4	5 Economic Development Commission Zoning Board of Appeals	6 Planning and Zoning Recreation Commission	7 Public Buildings Commission	8 Fire Commission Insurance Advisory Committee	9	10
11 LINCOLN'S BIRTHDAY	12 LINCOLN'S BIRTHDAY OBSERVED MUNICIPAL OFFICES CLOSED Board of Education Fine Arts Commission	13 Town Council	14 ST. VALENTINE'S DAY Community Beautification Committee Youth and Family Services Commission Water Pollution Control Authority	15 Conservation Commission	16	17
18	19 PRESIDENT'S DAY MUNICIPAL OFFICES CLOSED	20 Planning and Zoning Board of Finance Deadline for filing written appeals to the Board of Assessment Appeals	21 ASH WEDNESDAY Housing Authority Children's Holiday Performance GHS 11 am	22 WASHINGTON'S BIRTHDAY	23	24
25	26 Board of Education Welles-Turner Library Board Commission on Aging	27 Town Council	28 Water Pollution Control Authority Fair Rent Commission	29		

Call Town Clerk's Office at 652-7616 to verify meeting dates, times, and locations.

1 9 9 6



Hodge's Pond Dam

YOUTH AND FAMILY SERVICES

Youth and Family Services mission for Glastonbury is to exceed citizens expectations by providing positive development opportunities to empower youth and their families.

Citizens were served through Outreach, Clinical and Creative Experiences programs. Outreach Services serviced 650 youth and families through the following: Peer Education, Welles Village Activity Council for Youth (WACY), daily high school outreach, Glastonbury Assistance Program (GAP), Peer Education Conference at MCTC; the Youth Activities Council; classroom presentations; and open houses.

Creative Experiences served 1400 youth by involvement in such programs as "Babes in Arms"; the "Fantastics"; "Mary Poppins"; Pass It On, weekly television show; Youth Services Action Group; Enrichment programs and many more activities serving Glastonbury residents.

Clinical staff provided services to 659 individuals and 359 families; conducted 11 therapy and support groups; and presented 18 programs and presentations to the Glastonbury community.

- Celebrated Hats Off to Youth honoring all youth who volunteered service to the Glastonbury community.
- Extended Welles Village Activities for Youth (WACY) to a full year program.
- Celebrated twenty-five years of service to the community.
- Produced a Youth and Family Services informational video.

The Youth and Family Services Commission is an advisory committee to the Town Council. The Commission dealt with the following issues during 1994-1995:

- Developing a grant for Naubuc School Family Resource Center.
- Production of a video on Youth and Family Services.
- Senior/Community Center.
- Northeast Regional Center Drug Free Schools Grant.
- Needs of low income and Hispanic Glastonbury families.

MARCH

SUNDAY	MONDAY	TUESDAY	WEDNESDAY	THURSDAY	FRIDAY	SATURDAY
					1	2
3	4 Economic Development Commission Zoning Board of Appeals	5 Presidential Primary Planning and Zoning Human Relations Commission Recreation Commission	6 Public Buildings Commission	7	8	9
10	11 Fine Arts Commission Board of Education	12 Town Council	13 Community Beautification Committee Water Pollution Control Authority Youth and Family Services Commission	14 Fire Commission Conservation Commission	15 Last day to apply for energy assistance	16
17 ST. PATRICK'S DAY	18 Welles-Turner Library Board Commission on Aging	19 Planning and Zoning Board of Finance	20 Housing Authority	21	22	23
24 31 PALM SUNDAY	25 Board of Education	26 Town Council Presidential Primary	27 Water Pollution Control Authority Fair Rent Commission Final Budget Hearing 7:30 p.m.	28 Conservation Commission	29	30

Board of Assessment Appeals Hearings Scheduled (call 652-7600 for information)
Call Town Clerk's Office at 652-7616 to verify meeting dates, times, and locations.

1996



Tryon Street Meadows

SENIOR SERVICES

The Senior Services Department operates as a community focal point for the coordination of multi-purpose services and programs, for persons living independently or with families in the community. The Department serves individuals aged sixty years old and over, in order to promote independence, personal enrichment and an enhanced quality of life.

Services provided by the Senior Services Department include the following: Dial-A-Ride Transportation, Senior Lunch Program, Elderly Outreach Program, and Cultural, Recreation and Leisure Services.

- Provided 17,028 riders to seniors and disabled residents of Glastonbury through the Dial-A-Ride Program, a 16% increase in service.
- Provided 8,405 nutritious lunches to seniors, a 60% increase in service. Implemented a very successful summer luncheon program.
- Provided 2,265 outreach contacts through the Elderly Outreach Program. This program assists seniors in maintaining their physical, social and financial independence by providing information, referral, and in-home support services to seniors and their families.
- Developed a variety of new Senior Center programs based on senior input which led to a 49% increase in participation.

SOCIAL SERVICES

The Social Services Department's major responsibility is the administration of entitlement programs. Programs administered by the Department include: General Assistance, Energy Assistance, Renter's Rebate (Circuit Breaker), Food Bank, Operation Fuel, Holiday Programs and Evictions/Ejectments. The Social Services Administrator also serves as the staff liaison to the Human Relations Commission which is charged with investigating complaints regarding illegal discrimination in the workplace, housing and education.

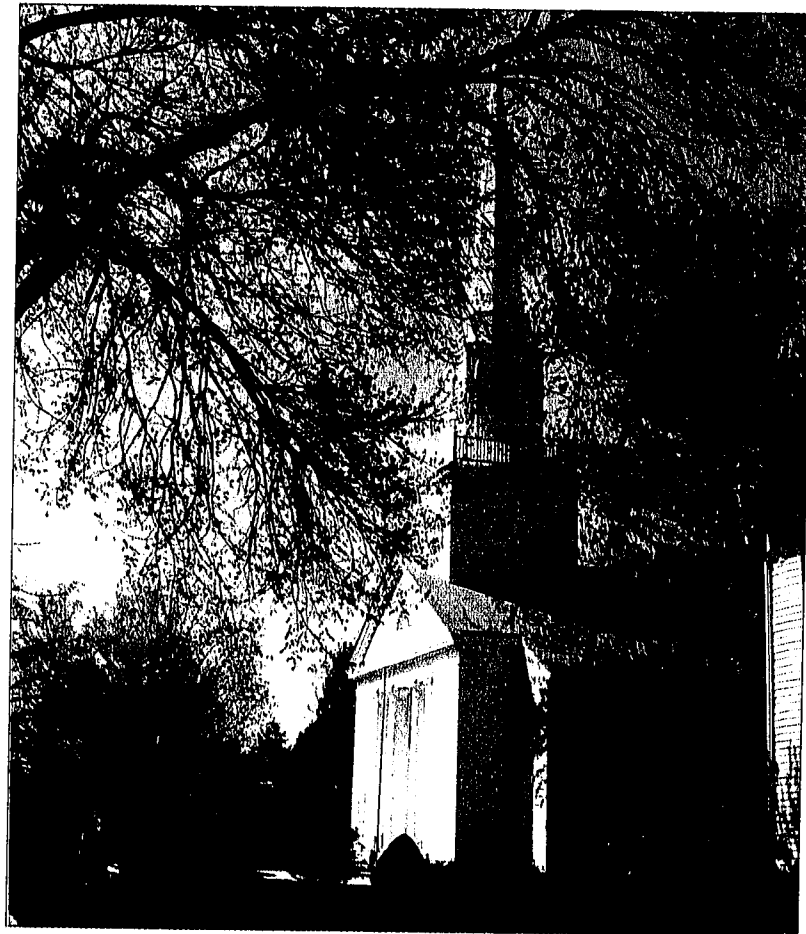
- Achieved a perfect audit report on Fiscal Year 1992-93 General Assistance cases by the Connecticut Department of Social Services.
- Purchased two 40-foot refurbished storage trailers at \$950/each, saving the town over \$2,000/year in eviction storage costs.
- Completed automating Department's financial records.

A P R I L

SUNDAY	MONDAY	TUESDAY	WEDNESDAY	THURSDAY	FRIDAY	SATURDAY
	1 Economic Development Commission Zoning Board of Appeals	2 Planning and Zoning Recreation Commission	3 Public Buildings Commission	4 PASSOVER	5 GOOD FRIDAY Municipal Offices Closed	6
7 EASTER DAYLIGHT SAVING TIME BEGINS	8 Fine Arts Commission Board of Education	9 Town Council	10 Community Beautification Committee Youth and Family Services Commission Water Pollution Control Authority Daylight Savings Hours begin at Transfer Station/Recycling Facility Wednesdays open 7 am - 7 pm	11 Fire Commission Conservation Commission Insurance Advisory Committee	12	13
14 National Library Week Begins	15 Welles-Turner Library Board Commission on Aging	16 Planning and Zoning Board of Finance	17 Housing Authority	18 Children's Holiday Performance GHS 11 am	19 National DARE Day	20 Fishing Season Opens
21 Welles-Turner Week of the Young Child preschool art exhibit begins	22 Board of Education	23 Town Council	24 Water Pollution Control Authority Fair Rent Commission	25 Conservation Commission	26	27
28	29	30				

21-27 Welles-Turner Week of the Young Child preschool art exhibit.
Call Town Clerk's Office at 652-7616 to verify meeting dates, times, and locations.

1 9 9 6



First Church of Christ Congregational

FACILITIES MAINTENANCE

The Building Maintenance Division is focused on providing comprehensive facility maintenance and management services for all municipal buildings. In addition to preventative maintenance, energy management and project management, the Division provides custodial support and coordination with vendors for all Town agencies. The Division also manages the utility and communication accounts for all facilities except the Board of Education, and provides staff support to the Public Buildings Commission.

- New alarm dialers were installed at several building locations including the Youth & Family Service Center, Senior Center, Welles-Turner Library, Vehicle Maintenance Garage, and Fire Companies 2, 3, and 4.
- Several building improvements and modifications were completed at the Police Department facilities including: installation of roof drains; installation of

preheat coils to address building comfort issues, and repair of the roof on the police annex.

- The design, installation, and inspection of new roofs at the Eastbury and Glastonbury High Schools was completed.
- Project management and oversight was provided by the Public Buildings Commission and Building Superintendent for the renovations to five elementary schools and roof replacements at Hopewell and Buttonball Schools.
- Boiler No. 2 at Town Hall was regasketed.
- A new fire detection system was installed at Fire Company No. 2.
- The Parks and Recreation office received several minor improvements including interior office painting; exterior painting; new tile flooring in the employee restroom, and recarpeting of two offices.

M A Y

SUNDAY	MONDAY	TUESDAY	WEDNESDAY	THURSDAY	FRIDAY	SATURDAY
			1 Public Buildings Commission	2	3	4
5	6 Economic Development Commission Zoning Board of Appeals	7 Planning and Zoning Recreation Commission	8 Community Beautification Committee Youth and Family Services Commission Water Pollution Control Authority	9 Fire Commission	10	11
12 MOTHER'S DAY National Police Week Begins	13 Board of Education Fine Arts Commission	14 Town Council	15 Local Emergency Planning Committee Renter's Rebate application period begins Housing Authority	16 Conservation Commission	17	18 Welles-Turner Library Friends Book Sale
19	20 Welles-Turner Library Board Board of Education	21 Board of Finance Planning and Zoning Friends of Welles-Turner Library Annual Meeting	22 Water Pollution Control Authority Fair Rent Commission	23	24	25
26	27 MEMORIAL DAY MUNICIPAL OFFICES CLOSED Memorial Day Parade	28 Town Council	29 Commission on Aging	30	31 Last day to apply for Operation Fuel benefits	

12-18 National Police Week
Call Town Clerk's Office at 652-7616 to verify meeting dates, times, and locations.

1 9 9 6



South Glastonbury Orchards

WELLES-TURNER MEMORIAL LIBRARY

The Welles-Turner Memorial Library offers a full range of public library services to meet the information needs and reading interests of the community. Services include: book and media collections, professional reference assistance, children's story hours, and other programs.

The Library Board continues to actively pursue a library expansion program. The Second Century Fund, Inc. is working to raise funds to help defray expansion costs.

- Completed the implementation of CONNECT, the Library's automated information system. There are now 13 online public access catalogs available.
- Set up a local area network (LAN) in the Reference area. The LAN allows four users to search several databases at the same time. The Friends of Welles-Turner Memorial Library helped fund this project.
- Assisted the Friends of the Library in presenting "Sunday Afternoon in the Library," a successful series of culturally enriching programs for children.

EAST GLASTONBURY PUBLIC LIBRARY

The East Glastonbury Public Library is an independent library association incorporated in 1960 to provide a library for Eastbury School. It has grown over the years into a full-service, free library serving the adult community as well as the children — all on a voluntary basis. Circulation for the past fiscal year was 14,250. The Library offers large print and audio books and changes the selection quarterly. Through generous donations from the townspeople, the Library is starting to build its own collection of audio books.

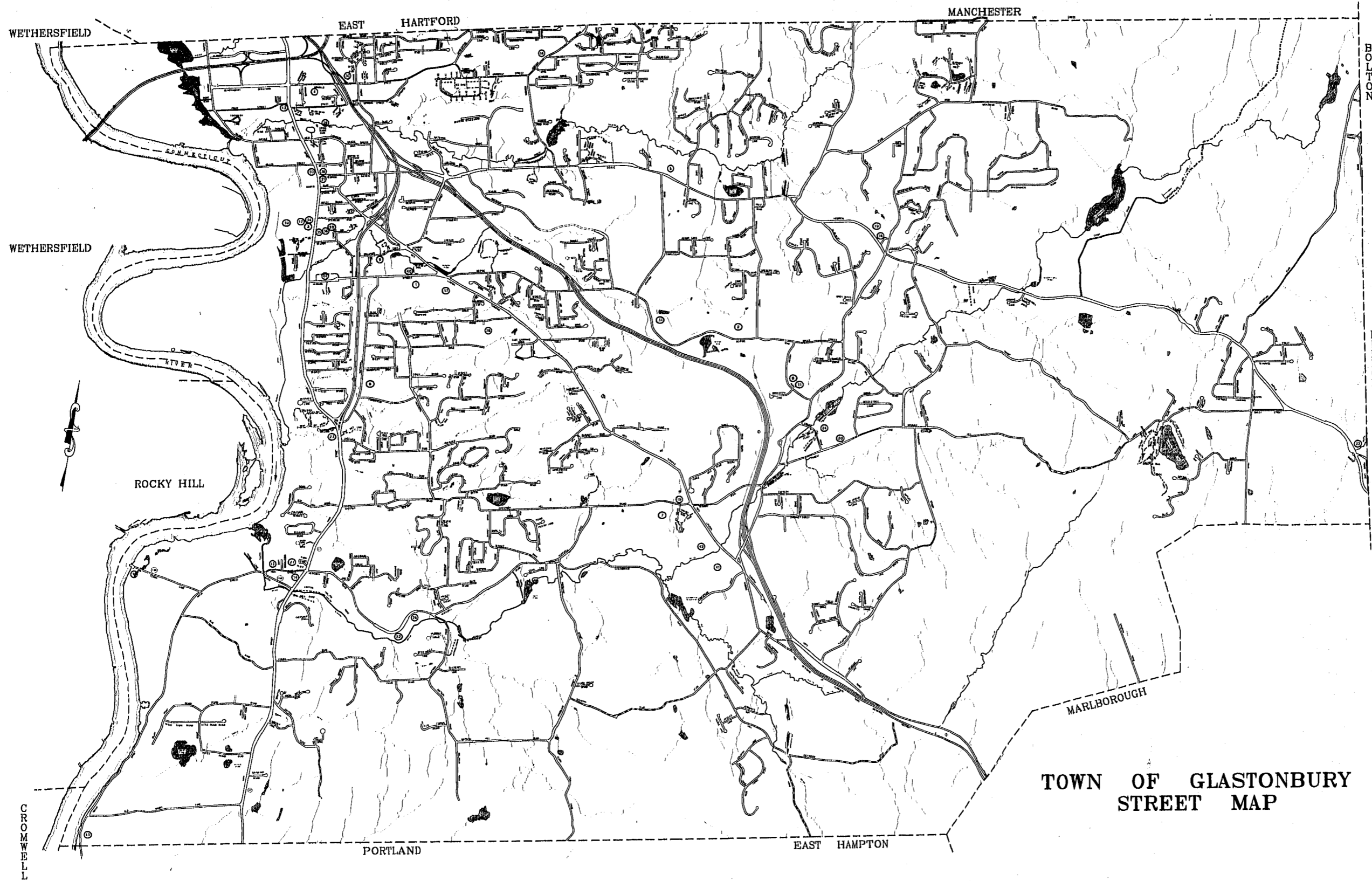
The Library sponsors an adult book-study group and a children's story hour for ages 3 to 5. A summer readers' program for children of all ages, as well as outreach programs for a neighborhood child care center and adjacent Eastbury School are also offered. The active Friends group sponsors an annual Book, Bake and Bric-a-Brac Sale in the early spring. The volunteers also conduct an annual fund drive each fall to raise the money necessary to keep the Library operating.

J U N E

SUNDAY	MONDAY	TUESDAY	WEDNESDAY	THURSDAY	FRIDAY	SATURDAY
						1 Dog Licenses Available
2	3 Zoning Board of Appeals Economic Development Commission	4 Human Relations Commission Planning and Zoning Recreation Commission	5 Public Buildings Commission	6	7	8
9	10 Fine Arts Commission Board of Education	11 Town Council	12 Water Pollution Control Authority Community Beautification Committee Youth and Family Services Commission	13 Fire Commission Insurance Advisory Committee Conservation Commission	14 FLAG DAY	15 Town Pools Open
16 FATHER'S DAY	17 Welles-Turner Library Board Commission on Aging	18 Planning and Zoning Board of Finance	19 Housing Authority	20 FIRST DAY OF SUMMER	21	22
23 30	24 Board of Education	25 Town Council Fun Run GHS 6:30 pm	26 Water Pollution Control Authority Fair Rent Commission	27 Conservation Commission	28	29

June-August Welles-Turner Library - Summer Reading Program
Call Town Clerk's Office at 652-7616 to verify meeting dates, times, and locations.

1 9 9 6



TOWN OF GLASTONBURY
STREET MAP

EDUCATIONAL FACILITIES

1. Glastonbury High School
2. Gideon Welles Junior High School
3. Academy School
4. Naubuc Elementary School
5. Hebron Avenue Elementary School
6. Buttonball Elementary School
7. Hopewell Elementary School
8. Eastbury Elementary School
9. Board of Education
10. Welles-Turner Public Library
11. East Glastonbury Public Library
12. South Glastonbury Public Library

FIRE STATIONS

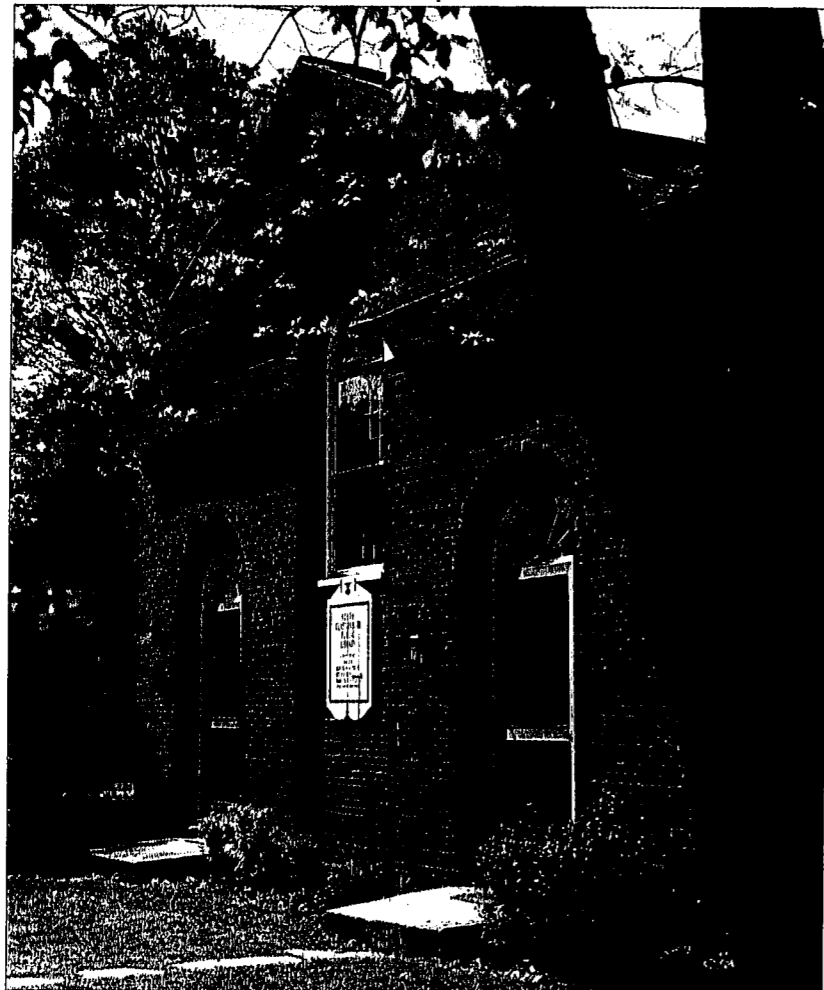
13. Company 1
14. Company 2
15. Company 3
16. Company 4

RECREATIONAL FACILITIES

17. Academy Field
18. Addison Park
19. Buckingham Park
20. Butler Field
21. Center Green
22. Cotton Hollow Preserve
23. Audubon Society and Earle Park
24. Eastbury Pond
25. Glastonbury Memorial Park
26. Grange Pool
27. High Street School Park
28. Rotary Field
29. Salmon Brook Park
30. Welles Park
31. J.B. Williams Park
32. Blackledge Falls
33. Glastonbury/Rocky Hill Ferry

MUNICIPAL FACILITIES

34. Town Office Building
35. Police Station
36. Senior Citizen's Center
37. Parks and Recreation Department
38. Ambulance Building
39. Facility Maintenance/ Water Pollution Control Facility
40. Youth and Family Services
41. Town Garage/Highway and Vehicle Maintenance Departments
42. Transfer Station
43. Bulky Waste Facility
44. Hubbard Green



South Glastonbury Library

SOUTH GLASTONBURY PUBLIC LIBRARY

The South Glastonbury Library, located at 80 High Street in South Glastonbury, is staffed entirely by volunteers and overseen by a Board of Trustees.

The Library provides local resources for the education and recreation of the community including books, periodicals, recordings supplemental to whatever additional services, facilities or exhibitions may be of interest and need to this community. The library also encourages and supports the development and appreciation of the literary

and artistic heritage of this Country which include the selection and purchase of books, recordings, periodicals and other related materials to help the community achieve a deep enjoyment of life, a broader understanding of themselves and the problems of the world.

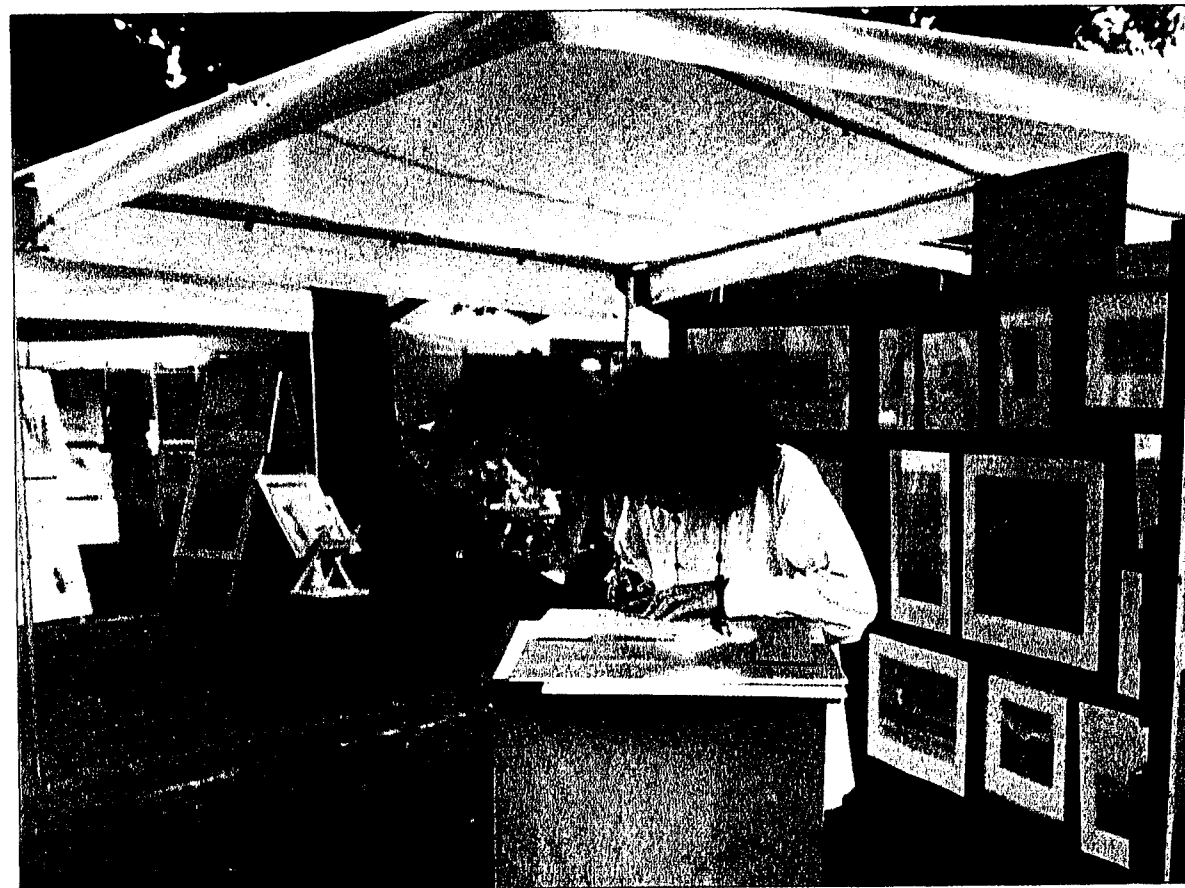
The Library is open Sundays from 2:00 to 4:00 p.m. and Mondays, Wednesdays, and Thursdays from 1:30 to 3:00 p.m. and 7:30 to 9:00 pm.

J U L Y

SUNDAY	MONDAY	TUESDAY	WEDNESDAY	THURSDAY	FRIDAY	SATURDAY
	1 Economic Development Commission Zoning Board of Appeals Tax Payments Due	2 Planning and Zoning Recreation Commission Fun Run GHS 6:30 pm	3 Public Buildings Commission	4 INDEPENDENCE DAY Municipal Offices Closed	5	6
7 Town Band Concert Hubbard Green 7 pm	8 Board of Education	9 Town Council Fun Run GHS 6:30 pm Kids Dog Show Hubbard Green 6 pm	10 Water Pollution Control Authority Community Beautification Committee Summer Music Series Hubbard Green 7 pm	11 Conservation Commission Fire Commission	12	13
14 Town Band Concert Hubbard Green 7 pm	15 Welles-Turner Library Board	16 Planning and Zoning Fun Run GHS 6:30 pm	17 Housing Authority Summer Music Series Hubbard Green 7 pm	18	19	20
21 Town Band Concert Hubbard Green 7 pm	22	23 Town Council Fun Run GHS 6:30 pm	24 Water Pollution Control Authority Fair Rent Commission Summer Music Series Hubbard Green 7 pm	25	26	27
28 Town Band Concert Hubbard Green 7 pm	29	30 Fun Run GHS 6:30 pm	31 Waste Disposal Permits Expire			

June-August Welles-Turner Library - Summer Reading Program
Call Town Clerk's Office at 652-7616 to verify meeting dates, times, and locations.

1 9 9 6



Art Guild's "On the Green" Arts and Crafts Show

GLASTONBURY POLICE DEPARTMENT

"Providing quality service and enhancing the quality of life for all." These two goals are the cornerstones of the Glastonbury Police Department's Mission Statement.

Striving to provide the best law enforcement protection possible, the Glastonbury Police Department responded to over 20,500 calls: Traffic - 8,412; Service - 7,438; Criminal - 4,675. There were 722 arrests, an increase of 14% over the previous year.

A commitment to youth, crime prevention and traffic related programs, on a proactive basis, resulted in a reduction of crime, particularly in youth related activity. A total of 390 presentations were made during the year which were attended by 10,294 youths and adults.

The Police Department's constant effort to reduce crime and to provide quality service to our citizens has enabled us to make Glastonbury one of the finest and safest communities.

FIRE COMMISSION / FIRE DEPARTMENT

The Board of Fire Commissioners is responsible for providing, maintaining, and regulating the Fire Department. The Board is bipartisan, and consists of six members elected for six years on a rotating basis.

The objective of the Board of Fire Commissioners is to provide adequate fire and rescue protection for the town; organize, staff and train an effective fire department; plan and recommend the acquisition of apparatus, equipment, and facilities; and provide appropriate assistance in emergencies and disasters.

COMMUNICATIONS

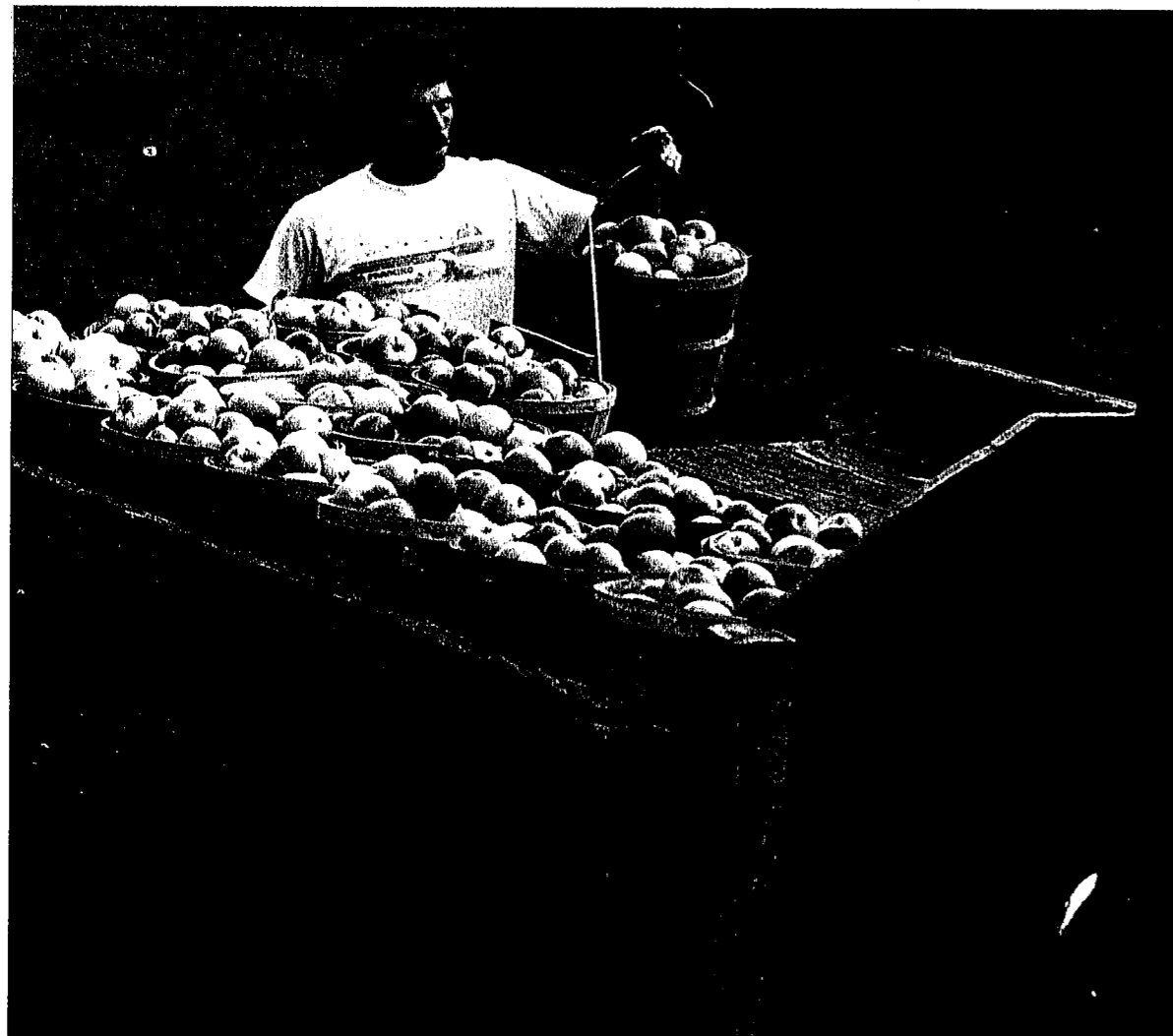
The Fire Department is near completion of its new UHF radio system. This system will enhance portable and mobile communications throughout Glastonbury. It will also provide a separate operating channel to be used at the scene of emergency incidents.

S E P T E M B E R

SUNDAY	MONDAY	TUESDAY	WEDNESDAY	THURSDAY	FRIDAY	SATURDAY
1	2 LABOR DAY Municipal Offices Closed	3 Human Relations Commission Planning and Zoning Recreation Commission	4 Public Buildings Commission	5	6	7 Friends of Welles-Turner Library Book Sale
8	9 Board of Education Zoning Board of Appeals Fine Arts Commission Economic Development Commission	10 Town Council Primary for State Offices	11 Youth and Family Services Commission Community Beautification Committee Water Pollution Control Authority	12 Fire Commission Conservation Commission	13 Last day to apply for Renter's Rebate	14 ROSH HASHANA
15	16 Welles-Turner Library Board Commission on Aging	17 Board of Finance Planning and Zoning	18 Housing Authority Local Emergency Planning Committee Daylight Savings Hours at Transfer Station/Recycling Facility modified to 7 am - 6 pm	19	20	21
22 FIRST DAY OF AUTUMN	23 YOM KIPPUR	24 Town Council	25 Water Pollution Control Authority Fair Rent Commission	26 Conservation Commission	27	28
29	30 Board of Education					

Call Town Clerk's Office at 652-7616 to verify meeting dates, times, and locations.

1 9 9 6



Harvest Time in South Glastonbury Orchards

CIVIL PREPAREDNESS

The Office of Civil Preparedness is responsible for coordinating all governmental and private sector activities in times of man-made or natural disasters. In order to meet these obligations effectively, the office is very active in planning for manpower, equipment and community needs. This involves the continual updating of information, regulations and equipment.

The Department conducts constant checks of materials and equipment, including the town warning sirens. It trains and recertifies radiological monitors with emphasis on peacetime accidents involving hazardous materials. The staff also attends CP and emergency management related seminars to keep abreast of current information.

It is also involved as a member of the Local Emergency Planning Committee.

In disaster situations, the CP office updates information and instructions to the citizens via its disaster information telephone number (652-7578). CP also has a state-of-the-art-mobile telecommunications van equipped to function as back-up should the Town's main system fail.

In 1995, the telecommunication capability was broadened by the addition of a new cellular FAX computer interface system, and an amateur radio 2 meter repeater. This upgrade will enhance information transfer between the disaster field and the emergency operating center.

OCTOBER

SUNDAY	MONDAY	TUESDAY	WEDNESDAY	THURSDAY	FRIDAY	SATURDAY
		1 Planning and Zoning Recreation Commission Energy Assistance Application Period Begins Crime Prevention Month	2 Public Buildings Commission	3	4 Absentee Ballots for November Election	5
6	7 Zoning Board of Appeals Board of Education Economic Development Commission	8 Town Council	9 Youth and Family Services Commission Community Beautification Committee Water Pollution Control Authority	10 Fire Commission Conservation Commission Insurance Advisory Committee	11	12
13	14 COLUMBUS DAY MUNICIPAL OFFICES CLOSED Fine Arts Commission	15 Board of Finance Planning and Zoning	16 Housing Authority	17 Kids Decorated Pumpkin Contest Jr. High Gym 6:30 pm	18	19 Apple Harvest Festival Hunting Season Opens
20 Apple Harvest Festival	21 Commission on Aging Welles-Turner Library Board	22 Town Council Last day to register to vote in order to vote in November election.	23 Water Pollution Control Authority Fair Rent Commission Daylight Savings Hours at Transfer Station/Recycling Facility end	24 Conservation Commission	25	26
27 DAYLIGHT SAVING TIME ENDS	28 Board of Education	29	30	31 HALLOWEEN		

Call Town Clerk's Office at 652-7616 to verify meeting dates, times, and locations.

1996



Roaring Brook / Cotton Hollow

The Physical Services Department is responsible for the management of roadways, sewers, sidewalks, traffic controls, and other aspects of the Town's physical infrastructure system. This pertains to both new projects and additions to the system as well as maintenance and repair of the existing infrastructure.

ENGINEERING DIVISION

Through an interactive process with the community, two important sidewalk projects were implemented. The Hubbard Street/Main Street sidewalks and the Griswold Street/Addison Road sidewalks provide important links in allowing residents to safely access Town facilities and the Town in general by pedestrian travel.

HIGHWAY DIVISION

The Highway Division is continuing its multi-year plan to improve the condition of Town roads through an aggressive pavement resurfacing program. This paving program will help preserve these roadways, thereby eliminating more costly repairs in the future, and will allow the motoring public greater convenience and safety. In the current construction season, over 20 miles of town roads will be resurfaced in some fashion.

VEHICLE MAINTENANCE DIVISION

The Vehicle Maintenance Division is responsible for the maintenance, repair, and replacement of all Town-owned vehicles. This Division took another step in reducing vehicle repair costs through the first-time use of stainless steel winter sand spreaders. These components are ordinarily highly susceptible to corrosion. However, the stainless steel units will eliminate this problem which will extend their life and reduce on-going maintenance.

WATER POLLUTION CONTROL AUTHORITY

The Engineering Division is the official liaison to the Water Pollution Control Authority (WPCA) which is an appointed Commission. The WPCA is responsible for approval of all sewage plant and sewer line expansions, new connections, and establishment of the fee structure for both operational and construction expense recovery. The WPCA continued its process of evaluating the future needs and capacity through two studies during the 1994-1995 fiscal year: the Roaring Brook Master Sewer Plan and the Wastewater Treatment Sewer Inventory/Audit.

N O V E M B E R

SUNDAY	MONDAY	TUESDAY	WEDNESDAY	THURSDAY	FRIDAY	SATURDAY
					1 Sewer Use Payments Due	2
3	4 Board of Education Economic Development Commission Zoning Board of Appeals	5 ELECTION DAY Recreation Commission	6 Public Buildings Commission	7	8	9
10	11 VETERAN'S DAY MUNICIPAL OFFICES CLOSED Fine Arts Commission	12 Town Council	13 Community Beautification Committee Water Pollution Control Authority Youth and Family Services Commission	14 Conservation Commission Fire Commission	15	16
17	18 Commission on Aging Welles-Turner Library Board	19 Board of Finance Planning and Zoning	20 Housing Authority	21	22	23
24	25 Board of Education	26 Town Council Thanksgiving Food Baskets Distributed	27 Water Pollution Control Authority Fair Rent Commission	28 THANKSGIVING DAY Municipal Offices Closed	29 Municipal Offices Closed	30

Call Town Clerk's Office at 652-7616 to verify meeting dates, times, and locations.

1 9 9 6



The Hale-Rankin House c. 1789

WATER POLLUTION CONTROL DIVISION

The Water Pollution Control Division is responsible for the operation and maintenance of the Water Pollution Control Facility and eight pumping stations, treating wastewater generated from residential/commercial and industrial discharges within compliance of our federal National Pollution Discharge Elimination System (NPDES) Permit.

- Processed 713 million gallons of wastewater and disposed of 555 tons of sludge.
- Completed Sewer System evaluation to allow efficient planning for the future.
- Stabilized Sewer Use rate.

REFUSE DISPOSAL DIVISION

The Refuse Disposal Division provides Town facilities and public information regarding waste disposal and recycling. Facilities included in the program are the Transfer Station, Bulky Waste Facility and Satellite recycling drop off areas.

- Evaluated Satellite recycling program's effectiveness.
- 3,006 tons of refuse were disposed of at the Transfer Station, 6,337 tons of bulky waste disposed at Bulky Waste Facility, 3,201 tons of materials were recycled.
- Evaluated waste disposal permit fee system.
- Finalized municipal agreement with seven (7) other municipalities to create a regional household hazardous waste collection facility.

D E C E M B E R

SUNDAY	MONDAY	TUESDAY	WEDNESDAY	THURSDAY	FRIDAY	SATURDAY
1 Santa's 3.5 Mile Run GHS noon	2 Economic Development Commission Zoning Board of Appeals Operation Fuel Application Period Begins	3 Planning and Zoning Human Relations Commission Recreation Commission	4 Public Buildings Commission	5	6 FIRST DAY OF CHANUKAH	7
8	9 Fine Arts Commission Board of Education	10 Town Council	11 Water Pollution Control Authority Youth and Family Services Commission Community Beautification Committee	12 Conservation Commission Fire Commission	13	14
15	16 Commission on Aging Welles-Turner Library Board Board of Education	17 Board of Finance Planning and Zoning	18 Housing Authority Fair Rent Commission Annual Toy Shop (tentative)	19 Annual Toy Shop (tentative)	20	21 FIRST DAY OF WINTER
22	23	24	25 CHRISTMAS Municipal Offices Closed	26	27	28
29	30	31				

Call Town Clerk's Office at 652-7616 to verify meeting dates, times, and locations.

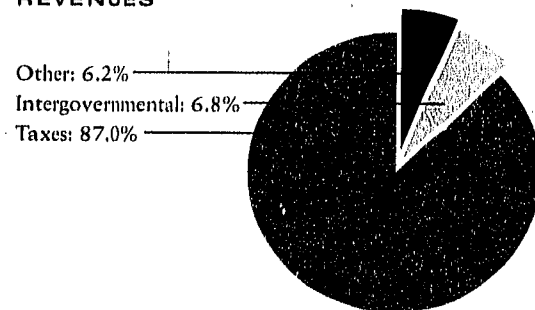
1 9 9 6

FINANCIAL STATEMENT

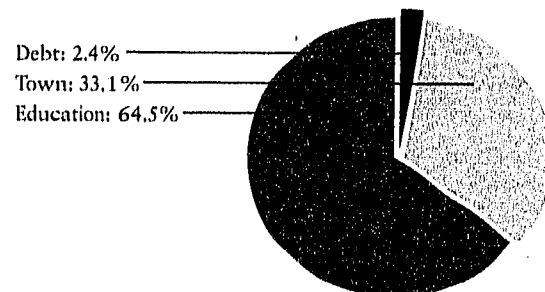
**STATEMENT OF REVENUES, EXPENDITURES AND CHANGES
IN FUND BALANCE - BUDGET AND ACTUAL - GENERAL FUND
FOR THE YEAR ENDED JUNE 30, 1995**

REVENUES	AMENDED BUDGET	ACTUAL	VARIANCE FAVORABLE (UNFAVORABLE)
Property Taxes	\$52,004,235	\$53,012,044	\$1,007,809
Licenses and permits	370,300	439,648	69,348
Intergovernmental	3,728,833	4,181,595	452,762
Charges for services	1,075,300	1,117,311	42,011
Other revenues	<u>1,023,950</u>	<u>2,155,805</u>	<u>1,131,855</u>
Total revenues	58,202,618	60,906,403	2,703,785
EXPENDITURES			
Current:			
General Government	403,474	376,789	26,685
Community Development	770,561	757,123	13,438
Administrative Services	6,636,576	6,130,935	505,641
Public Safety	4,747,090	4,601,830	145,260
Physical Services and Sanitation	4,953,561	4,750,943	202,618
Human Resources	1,184,701	1,112,312	72,389
Leisure/Culture	3,020,521	2,744,235	276,286
Contingency	21,068	11,028	10,040
Board of Education	36,888,044	36,797,754	90,290
Debt service	<u>1,555,133</u>	<u>1,421,509</u>	<u>133,624</u>
Total expenditures	60,180,729	58,704,458	1,476,271
Excess (deficiency) of revenues over expenditures	(1,978,111)	2,201,945	4,180,056
OTHER FINANCING SOURCES (USES)			
Operating transfers in	1,221,546	1,021,772	(199,774)
Operating transfers out	<u>(1,159,385)</u>	<u>(1,159,385)</u>	<u>-</u>
Total other financing sources (uses)	62,161	(137,613)	(199,774)
Excess (deficiency) of revenues and other financing sources over expenditures and other financing uses	\$(1,915,950)	2,064,332	\$3,980,282
Fund balance, July 1		7,352,177	
Prior period adjustment		<u>964,368</u>	
Fund balance, June 30		\$10,380,877	

REVENUES



APPROPRIATIONS & EXPENDITURES



FINANCIAL STATEMENT

**TOWN OF GLASTONBURY GENERAL FUND
COMPARATIVE BALANCE SHEETS - JUNE 30, 1995 AND 1994**

	1995	1994
ASSETS		
Cash and cash equivalents	\$12,943,440	\$9,959,058
Receivables:		
Property taxes	1,764,398	2,454,722
Other	231,999	271,427
Inventory	180,567	191,175
Other assets	<u>44,845</u>	<u>4,446</u>
Total assets	\$15,165,249	\$12,880,828
LIABILITIES AND FUND BALANCE		
LIABILITIES		
Accounts and other payables	623,557	816,212
Due to developers for escrow deposits	1,451,440	1,298,454
Due to others for escrow deposits	6,118	7,972
Deferred revenues	<u>2,703,257</u>	<u>2,441,645</u>
Total liabilities	4,784,372	4,564,283
FUND BALANCE		
Reserved for encumbrances	23,620	20,785
Reserved for insurance	954,732	834,518
Unreserved:		
Designated for subsequent year's budget	1,600,000	1,600,000
Designated from insurance reserve for subsequent year's budget	250,000	125,000
Designated for specific purposes	469,885	267,301
Undesignated fund balance	<u>7,082,640</u>	<u>5,468,941</u>
Total fund balance	10,380,877	8,316,545
Total	\$15,165,249	\$12,880,828

A copy of the complete financial report is available at the Town Clerk's Office, Glastonbury Town Hall, 2155 Main Street, Glastonbury, Connecticut 06033

ELECTED OFFICIALS

BOARD OF EDUCATION
Suzanne Galvin, Chair
Michelle Fontaine, V. Ch.
Richard C. Brown
Helen Stern
Catherine B. Geraci
Sharon Driscoll
Lewis A. Parker
Paul W. Collins

BOARD OF FINANCE
Diane L. Northrop, Chair
Edward F. McCabe, V. Ch.
Edward B. Dingley
Walter F. Hemlock
James R. McIntosh
Constantine Constantine

BOARD OF TAX REVIEW
Shaun O'Rourke
David Motycka
William Holmes
Joan Palatine
Dennis C. Cavanaugh

FIRE COMMISSION
Gilbert D. Spencer, Chair
Peter Deich, V. Chair
Chandra Stino, Secretary
Norman Fierravanti
Arnold H. Higgins
Brian E. Tyrol

TOWN COUNCIL
Paul M. Nye, Chair
Kurt P. Cavanaugh, V. Ch.
Charles L. Monaco
George M. Purtill
Thomas F. Flanagan
Judith A. Stearns
Joe Broder
Toni I. Dolan
H. David Megaw

ZONING BOARD OF APPEALS
Robert Gerner
Gerald Daly
John C. Linderman
Sandra O'Leary
Michael H. Clinton
Alternates:
Lou Jonah
David Norige
Dorothy S. Peltzer

REGISTRAR OF VOTERS
Carolyn Larson
Joan Kemble

PROBATE JUDGE
Donald Hamer

STATE REPRESENTATIVES
Sonya Googins
Richard Veltri

STATE SENATOR
Paul Munns

U.S. CONGRESSWOMAN
Barbara Kennelly

APPOINTED OFFICIALS

AGRICULTURAL ADVISORY COMMITTEE
J. Baylis Earle, Chair
Mario Accornero
Louis Bussa
Henry Rose
Richard Ferrari
Deborah McIntosh
Michael Longo

BUILDING BOARD OF APPEALS (Code Rev. Committee)
David B. Cox, Chair
Calvin J. Carini
James W. Dutton
Graham Tyrol
Charles W. Brown

CABLE TV ADVISORY COMMITTEE
Stephen Jacoby
Stanley Zwirn
Vincent A. Fandetti

COMMISSION ON AGING
William McGaw, Jr., Chair
Warren Kreiner, V. Chair
Monica Shea
Audrey Quinlan
Ernest F. Reale
Elizabeth Giamalis
Frank B. Dibble

COMMUNITY BEAUTIFICATION COMMITTEE
Robert G. Shipman
Donald B. Reid
Marti Curtiss
Della Winans
Lewis Middleton
David Flattery
Elizabeth Lynch

CONSERVATION COMMISSION
Peter M. Stern, Chair
Edward A. Richardson
Judy Harper
James Bingham
William Patrick
Gerhard R. Schade
Charles J. Reed

ECONOMIC DEVELOPMENT COMMISSION
Robert Mulcahey, Chair
B. Kent Sleath
Richard A. Katz
John Farley
Walter L. Erley
James M. Lynch
Peter J. Preisner

FAIR RENT COMMISSION
John H. Roughan, Chair
Brian Connors
Frank Giantonio
Andrea Broder
John C. Hilton
Glenda Rose

FINE ARTS COMMISSION
David Blanchard
Jack Morris
Doris S. O'Rourke
Candace Satin
Charlene Vehlies
Bonnie Ferris
Cynthia Fitton
Natalie Rice
Carol Ahlschlager
Steven Molaver
Gladys Nelson
Ann Larson
Philomena Pappa
Mary Jane Sullivan
Cynthia Lattanzio

GLASTONBURY HOUSING PARTNERSHIP
Judy Harper
Camille Bushnell
Brian Tyrol
Ellen Carter
H. Buhl Kent
Howard O'Connell
George Allen
B.W. Erk
Barbara Ward
Sonya Googins

GREAT POND STEWARDSHIP COMMITTEE
William Reed
David Bodznick
Jollie Steffens
Judith Stearns
David Gumbart
George Purtill
Tom Mocko
Judy Harper

HISTORIC DISTRICT COMMISSION
Mary Lou Barrett, Chair
Louise Walker
Thomas Theurkauf
E. Marston Moffat
Galen Sheperd
Alternates:
Dennis Pepe
Marcia Olsson
Charles L. Miller

HOUSING CODE OF APPEALS
Nelson C.L. Brown
Kristin Brown
Patricia Moriarty

HUMAN RELATIONS COMMISSION
John C. Glezen
Kim McClain
Carl E. Hein
Sandra Hassan
Maureen Shannon

INCORPORATORS OF THE FREE ACADEMY
Richard Mihm
Helen Stern
Inez Hemlock

INSURANCE ADVISORY COMMITTEE
William Bland
Frank D. Anderson
Robert J. Hager
William Fochi
Mark E. Zimmerman
Stephen J. Ludwig
David Hoopes

JURY COMMITTEE
David Evans
Lucretia Seidel
Marcia W. Erley

PUBLIC BUILDINGS COMMISSION
David B. Cox, Chair
W. Michael Low
Paul Haas, Jr.
Edward J. Kamis
Gus Constantine
Suzanne Galvin
Blakeslee Lloyd
Scott Tyrol

PUBLIC HOUSING AUTHORITY
James F. Noonan, Chair
Craig Fontaine
Zelda Lessne
Minnie Rhinehart
Richard H. Inman

RECREATION COMMISSION
Betsy Katz, Chair
Lynn Hazard
Jack Ellovich
Jollie Steffens
J. Baylis Earle
Fred Clark, Jr.

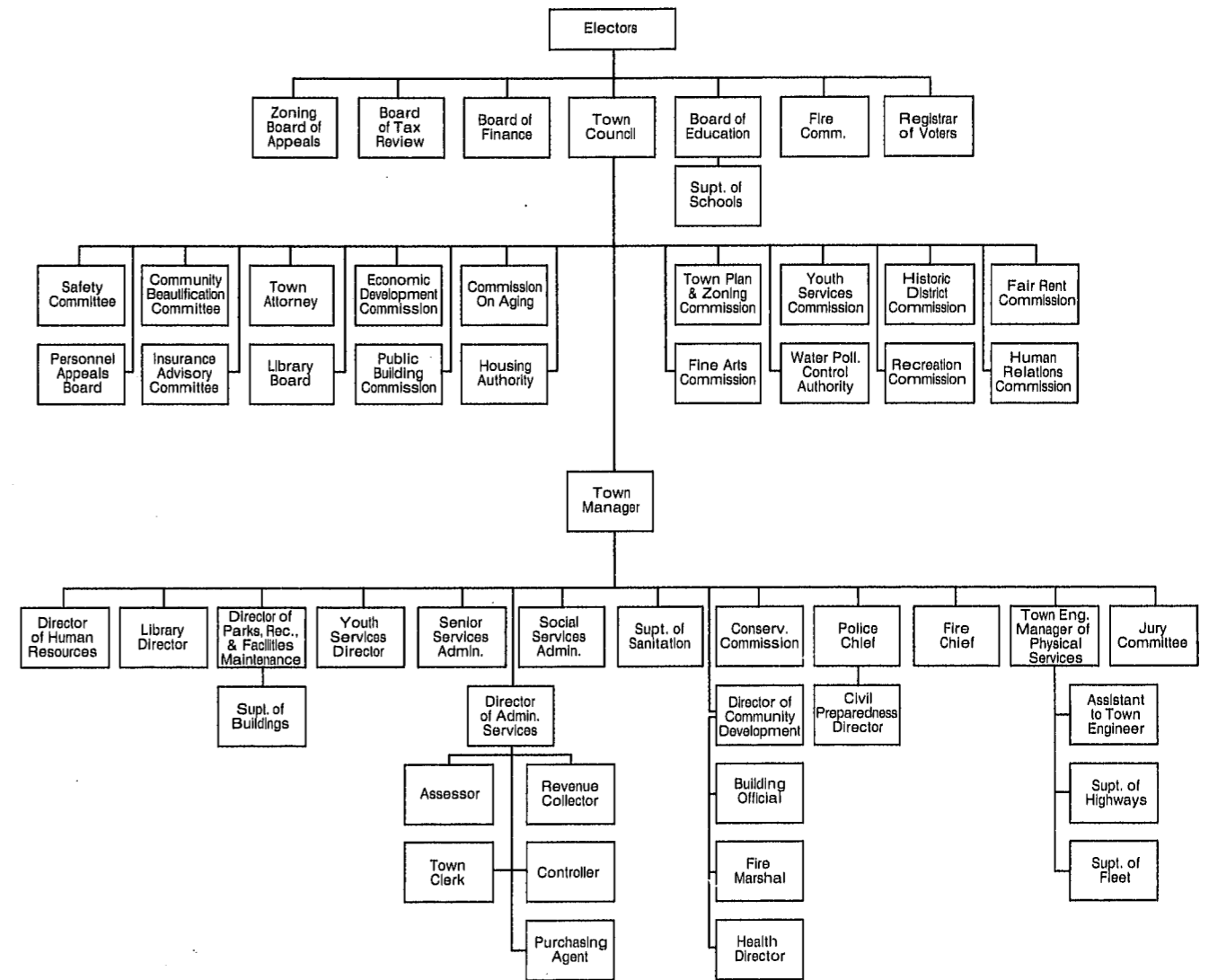
TOWN PLAN & ZONING COMMISSION
Dr. Michael F. Lepore, Ch.
Patricia V. Low
Scott Lessne
Barbara A. Nebb
H. Buhl Kent
Mark K. Branse
Alternates:
Jane Sleath
Olga M. Corban
Patricia Bussa

WELLES-TURNER LIBRARY BOARD
Gloria Avitabile, Chair
Jane Brown
Della Schultz
H. Kennedy Hudner
Blakeslee Lloyd
Martha Poole

YOUTH & FAMILY SERVICES COMMISSION
Stephen Jacoby, Chair
Richard H. King, V. Chair
Shayna Ellovich
Susan Motyka
Tricia Dougherty
Karen Klingensmith
Luci Leone
Cathy Vacchelli

SAFETY COMMITTEE
Whitney Smith, Chair
Brian Comerford
Gloria Zwirn
Carol Hilton
Helen Litwin
Kevin A. Randolph
Robert H. Larsen

WATER POLLUTION CONTROL AUTHORITY
Bradley Northrop, Chair
Nils G. Carlson
John C. Gavin
Robert Jordan
Carmine Biello
William H. Habicht
Louis M. Accornero



TOWN MANAGER
Richard J. Johnson

CHIEF OF POLICE
James M. Thomas

COMMUNITY DEVELOPMENT DIRECTOR
Kenith E. Leslie

DIRECTOR OF FINANCE AND ADMINISTRATIVE SERVICES
G. Ted Ellis

DIRECTOR OF HUMAN RESOURCES
Susan J. Hebert

TOWN ENGINEER/MANAGER OF PHYSICAL SERVICES
John H. McGrane

ASSESSOR
Leon Jendrzeczyk

ASSISTANT TO TOWN ENGINEER
Chester G. Hamlin

BUILDING OFFICIAL
Edward P. Pietrycha

CIVIL PREPAREDNESS
Robert F. DiBella

COLLECTOR OF REVENUE
Madeline Rettberg

CONTROLLER
Lisa A. Martin

DIRECTOR OF HEALTH
David Boone

DIRECTOR OF PARKS, RECREATION & FACILITIES MAINTENANCE
Raymond E. Purtell

FIRE CHIEF
Stephen W. Haines

FIRE MARSHAL
Christopher Siwy

FLEET SUPERINTENDENT
Thomas O. Tierney

HIGHWAY SUPERINTENDENT
Scott G. Zenke

HOUSING AUTHORITY DIRECTOR
Ivan Pour

LIBRARY DIRECTOR
James G. Johnston

PURCHASING AGENT
John A. Makiaris

SENIOR SERVICES ADMINSTRATOR
Patricia R. Schneider

SOCIAL SERVICES ADMINSTRATOR
Jo-Ann Dorn

SUPERINTENDENT OF BUILDINGS
David Sacchitella

SUPERINTENDENT OF SANITATION
Michael J. Bisi

TOWN ATTORNEY
William S. Rogers

TOWN CLERK
Edward J. Friedeberg

YOUTH AND FAMILY SERVICES DIRECTOR
Edmund J. Meincke

TOWN ADMINISTRATION

FOR INFORMATION	CALL	PHONE
Accounts Payable	Accounting	652-7595
Administration	Town Manager	652-7500
Assessment	Assessor	652-7600
Assessment	Info Line	652-7606
Birth Certificates	Town Clerk	652-7616
Building Permits	Building Office	652-7521
Children's Department	Welles-Turner Library	652-7718
Civil Preparedness	Civil Preparedness	652-7576
Death Certificates	Town Clerk	652-7616
Deeds	Town Clerk	652-7616
Demolition Permits	Building Office	652-7521
Dog Licenses	Town Clerk	652-7616
Dog & Animal Problems	Animal Control Officer	633-8301
Drainage Problems	Engineering	652-7735
Electrical Permits	Building Office	652-7521
Elderly Dial-A-Ride	Senior Services	652-7643
Elderly Municipal Agent	Senior Services	652-7642
Energy Assistance	Social Services	652-7638
Engineering	Engineering	652-7735
Fire Marshal	Fire Marshal	652-7526
Health Matters	Health Department	652-7534
Highways	Highway Superintendent	652-7749
Inland Wetlands	Community Development	652-7510
Landfill Permits	Engineering	652-7735
Library	Welles-Turner Library	652-7719
Reference Department	Welles-Turner Library	652-7720
Marriage Licenses	Town Clerk	652-7616
Nursing	Visiting Nurse Association	633-3521
Personnel	Human Resources/Personnel	652-7501
Planning	Community Development	652-7510
Plumbing & Heat Permits	Building Office	652-7521
Police & Fire Emergencies	Police Department	911
Police (General Information)	Police Department	633-8301
Probate Court	Judge	652-7629
Recreation	Recreation Department	652-7679
Recreation Schedules/ Cancellations	Info Line	652-7689
Refuse Disposal/Recycling	Info Line	652-7790
Registration of Voters	Registrar of Voters	652-7627
Sanitary Inspection	Health Department	652-7534
Sewer Department/ Water Pollution Control	Sanitation	652-7772
Snow Removal & Streets	Highway Superintendent	652-7749
Taxes	Collector of Revenue	652-7614
Taxes	Info Line	652-7606
Trees	Parks and Recreation	652-7679
Voting	Registrar of Voters	652-7627
Welfare	Social Services	652-7638
Youth & Family Services	Youth & Family Services	652-7660

BOARD OF EDUCATION

CENTRAL OFFICE	CONTACT PERSON	PHONE
Superintendent of Schools	Jacqueline Jacoby	652-7961
Assistant Superintendent	Edward Schofield	652-7965
Business Manager	Sharon Smith	652-7941
Food Services Director	Brad Devlin	652-7948
Transportation/ Communication	Rita Gagnon	652-7951

CURRICULUM DIRECTOR

Art	Daniel Roach	652-7954
Athletics	Raymond Nicolletta	652-7234
English	Richard Dlugos	652-7967
Foreign Language	Christine Brown	652-7954
Math	Linda Ball	652-7967
Music	Leslie Hunt	652-7954
Physical Education/Health	Basil Roberts	652-7253
Science	Kenneth Roy	652-7250
Social Science	Deborah Willard	652-7967
Vocational Education	Katherine Brophy	652-7249
Guidance Department/ Director	Virginia Gordon	652-7211
Special Education	Gina Vance	652-7971
Special Education	Gary Nolf	652-7971

GLASTONBURY HIGH SCHOOL

Principal	Alan Bookman	652-7204
-----------	--------------	----------

GIDEON WELLES SCHOOL

Principal	Thomas Russo	652-7800
-----------	--------------	----------

ACADEMY SCHOOL

Principal	Carol Sue Schmidt	652-7835
-----------	-------------------	----------

BUTTONBALL SCHOOL

Principal	Patricia DaSilva	652-7276
-----------	------------------	----------

EASTBURY SCHOOL

Principal	William McDermott	652-7858
-----------	-------------------	----------

HEBRON AVENUE SCHOOL

Principal	Mary Ann Manchester	652-7875
-----------	---------------------	----------

HOPEWELL SCHOOL

Principal	Peter Maluk	652-7897
-----------	-------------	----------

NAUBUO SCHOOL

Principal	D. Patricia Hatch	652-7918
-----------	-------------------	----------

**FIRE & POLICE EMERGENCY
911
ROUTINE CALLS POLICE DEPARTMENT
633-8301**



MADE FROM RECYCLED PAPER - RECYCLABLE